

MSP-2020-02 Publix Master Sign Plan Amendment

Publix

SO# 116550

Publix at Westlake Plaza
Westlake FL

Binder: 10/7/2020

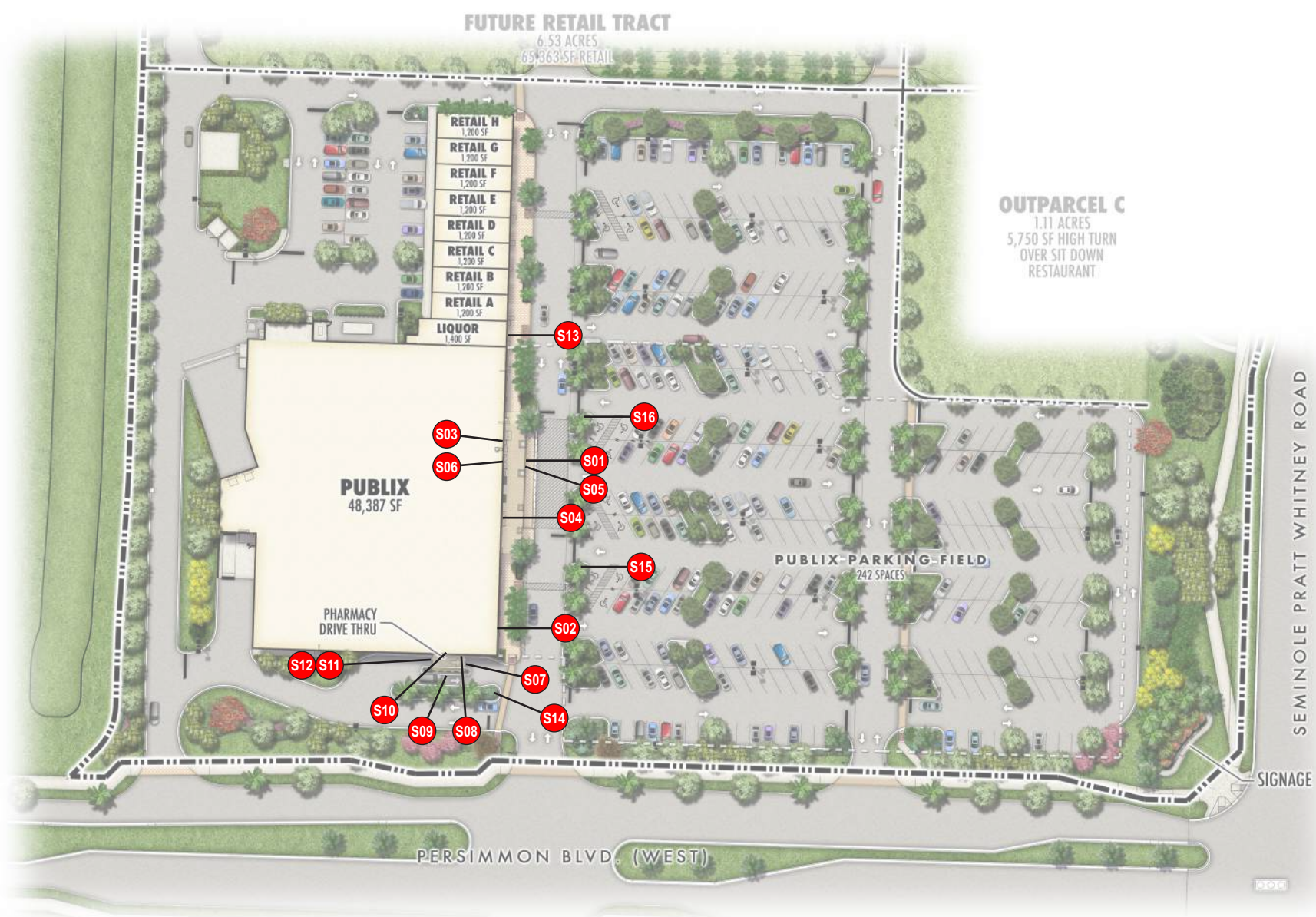
Revised: 10/28/2020

Revised: 11/12/2020



This document was prepared by
ATLAS SIGN INDUSTRIES
800.772.7932

Key for Publix Building Signage



Publix
FOOD & PHARMACY

PHARMACY
DRIVE THRU

S01 3'-0" Publix Channel Letters

S02 16" Channel Letters



EXIT

0000

S03 S/F Wall Sign

S04 FCO Exit

S05 FCO Address

ENTRY

EXIT ONLY

S05 FCO Entry

S07 Exit Only

Publix
FOOD & PHARMACY

S08 3'-0" Publix Channel Letters

PHARMACY DRIVE THRU

S09 8" Channel Letters

CONSULT YOUR PHARMACIST CONCERNING THE AVAILABILITY OF A LESS EXPENSIVE, GENERALLY EQUIVALENT DRUG AND THE REQUIREMENTS OF FLORIDA LAW.

ENTER ONLY

S11 FCO Letters

Publix
LIQUORS

S13 19" Channel Letters

CLEARANCE 12'-8"

S12 FCO Letters

S10 S/F Plaque



S14 S/F Directional



S15 S/F Directional



S16 S/F Directional

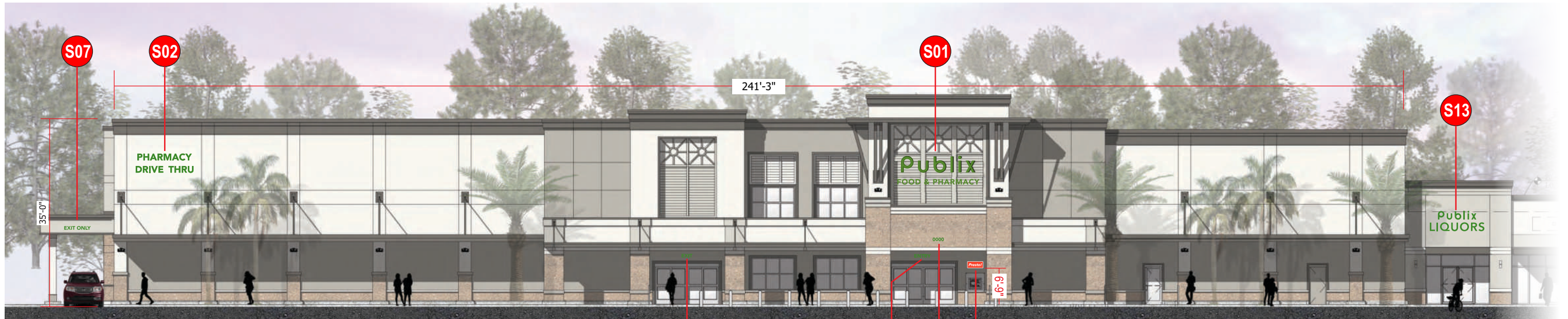


National Headquarters: 1077 West Blue Heron Blvd.
West Palm Beach, Florida 33404
800.772.7932
www.atlasbtw.com

Revisions:	
...	...
...	...
...	...
...	...
...	...

SP

PM: Tiffany S.	Address: Town Center Pkwy
Drawn By: TD	City State: Westlake, FL
Date: 10/7/2020	Drawing Number: 116550-SP



EAST ELEVATION



SOUTH ELEVATION

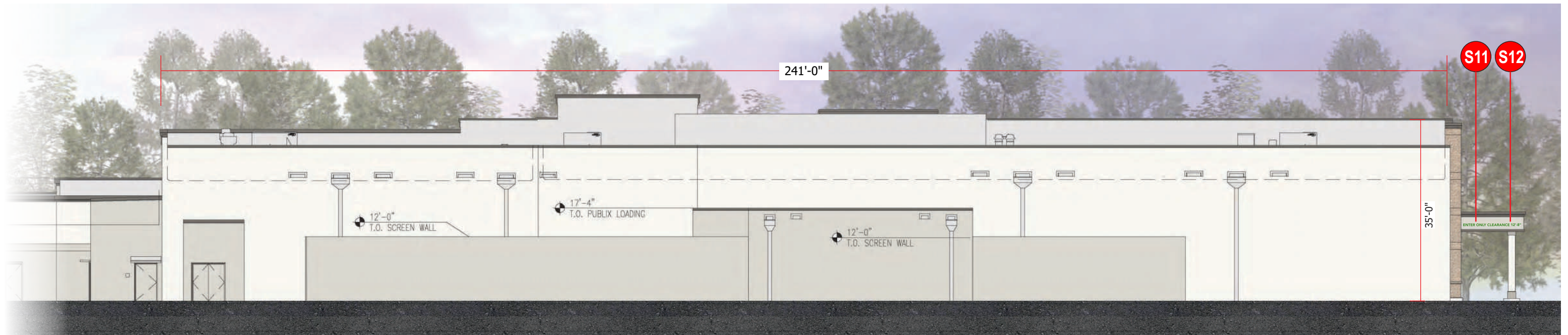


National Headquarters: 1077 West Blue Heron Blvd.
 West Palm Beach, Florida 33404
 800.772.7932
 www.atlasbtw.com

Revisions:	
...	...
...	...
...	...
...	...
...	...

ELEV

PM: Tiffany S.	Address: Town Center Pkwy
Drawn By: TD	City State: Westlake, FL
Date: 10/7/2020	Drawing Number: 116550-ELEV



WEST ELEVATION

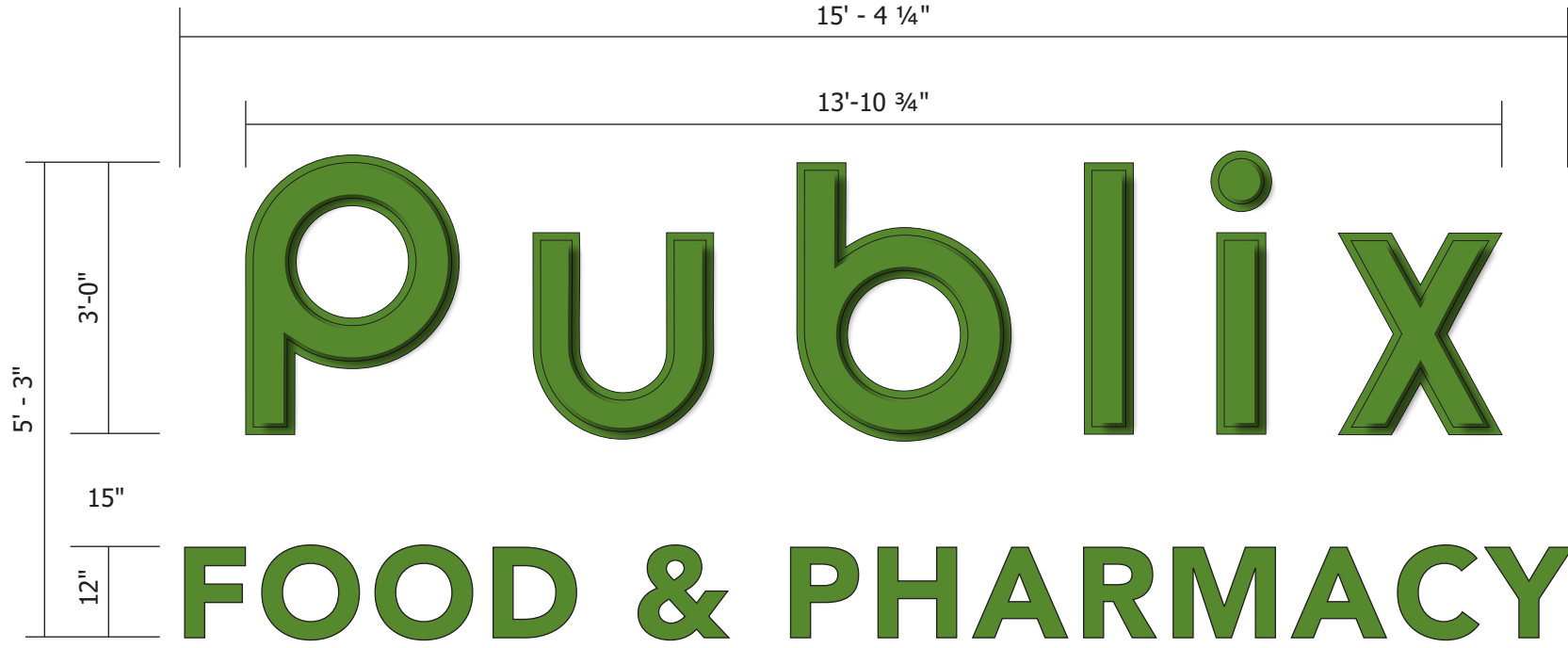


National Headquarters: 1077 West Blue Heron Blvd.
 West Palm Beach, Florida 33404
 800.772.7932
 www.atlasbtw.com

Revisions:	
...	...
...	...
...	...
...	...
...	...

ELEV

PM: Tiffany S.	Address: Town Center Pkwy
Drawn By: TD	City State: Westlake, FL
Date: 10/7/2020	Drawing Number: 116550-ELEV



S01 Scale: 1/2" = 1'-0"

Square Footage: **80.6 sq ft**

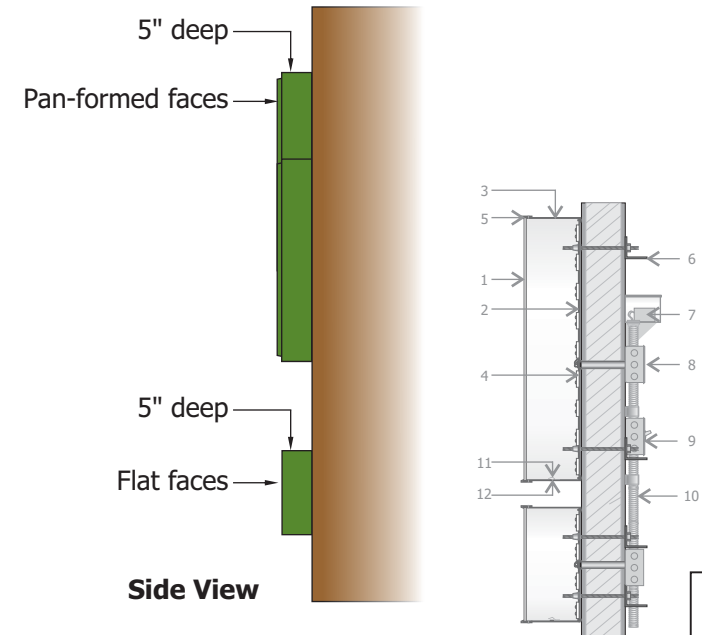
NOTE: All smaller letters to have plastic "Bird Deterrent" inserts.

NOTE: These channel letters are flush mounted with remote power supplies.

ACTION:
Manufacture and install new set of internally illuminated channel letters.

- DESCRIPTION:**
- Letters are fabricated with .125 aluminum backs and painted (semi-gloss finish) with .063 aluminum returns @ 5" deep.
 - Letters are internally illuminated with energy efficient LED.
 - Letter faces are .177" SG Plus - panformed
 - "PUBLIX" Pan-Formed faces are secured with 1" Jewelite Trimcap
 - "F&P" Flat faces are secured with 1" Jewelite Trimcap

- COLOR SCHEDULE:**
- Aluminum Returns = Painted PMS 363 Green (semi-gloss)
 - "PUBLIX" = 1" Jewelite trimcap painted PMS 363 Green (semi-gloss)
 - "F & P" = 1" Jewelite trimcap painted PMS 363 Green (semi-gloss)
 - Acrylic Faces = .177 SG Plus PMS 363 Green
 - GE LEDs = Green



- ELECTRICAL NOTES**
- All materials and fasteners meet 3004.4
 - All electrical components are UL listed, labeled and approved.
 - Sign grounded according to NEC 6007.7
 - Signs manufactured and listed NEC 600.3 and marked per NEC 600.4.
 - All branch circuits per NEC 600 .5(B).1 or (B).2.
 - All Signs controlled by photocell or time clock per FBC 13-415. (ABC).1.4.
 - One visible 20 amp disconnect per sign per circuit per NEC 600.6(A).1

1	acrylic face
2	letter backs to be .125 aluminum
3	returns to be .040 aluminum
4	illumination to be provided by LED.
5	1" trim cap
6	mounting varies upon location and wall material
7	power supply
8	junction box
9	listed disconnect switch
10	primary power source
11	weep hole cover to be white pre-finished aluminum
12	weep hole

CODE:
Wall Signs: Not to exceed 80% of building width; Minimum 10% clear area on each outer edge of the building. Sign letters not to exceed 36 inches in height including lower case letters. Signs to be noted "remote or self contained".



EAST ELEVATION
Scale: 1/16" = 1'-0"

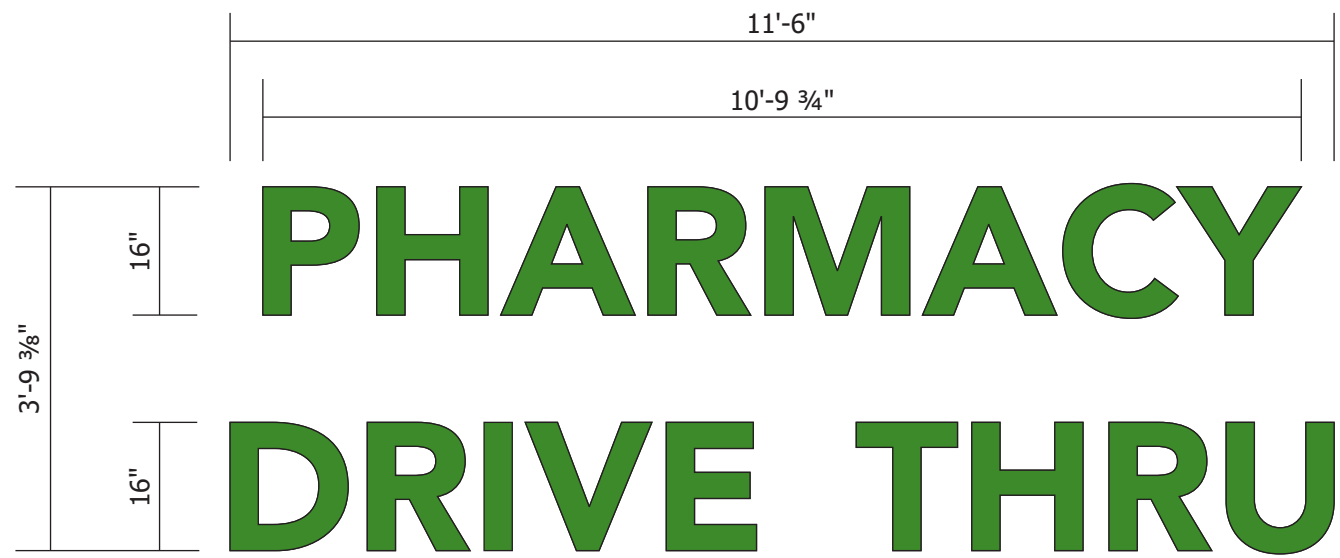


National Headquarters: 1077 West Blue Heron Blvd.
West Palm Beach, Florida 33404
800.772.7932
www.atlasbtw.com

Revisions:		
...
...
...
...
...
...

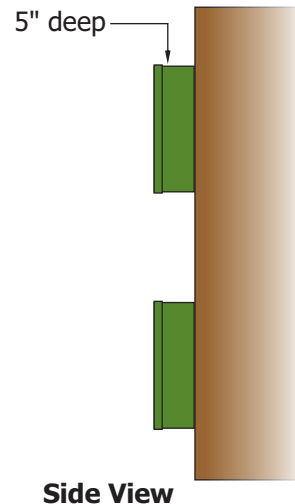
S01

PM: Tiffany S.	Address: Town Center Pkwy
Drawn By: TD	City State: Westlake, FL
Date: 10/7/2020	Drawing Number: 116550-S01

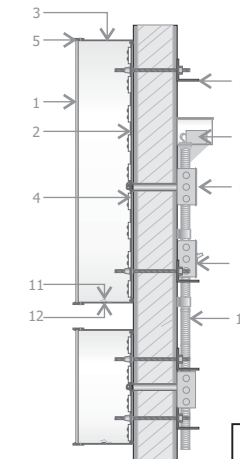


S02 Scale: 3/4" = 1'-0"

Square Footage: **43.4 sq ft**



Side View



ELECTRICAL NOTES	
1.	All materials and fasteners meet 3004.4
2.	All electrical components are UL listed, labeled and approved.
3.	Sign grounded according to NEC 6007.7
4.	Signs manufactured and listed NEC 600.3 and marked per NEC 600.4.
5.	All branch circuits per NEC 600 .5(B).1 or (B).2.
6.	All Signs controlled by photocell or time clock per FBC 13-415. (ABC).1.4.
7.	One visible 20 amp disconnect per sign per circuit per NEC 600.6(A).1

1	acrylic face
2	letter backs to be .125 aluminum
3	returns to be .040 aluminum
4	illumination to be provided by LED.
5	1" trim cap
6	mounting varies upon location and wall material
7	power supply
8	junction box
9	listed disconnect switch
10	primary power source
11	weep hole cover to be white pre-finished aluminum
12	weep hole

NOTE: All smaller letters to have plastic "Bird Deterrent" inserts.

NOTE: These channel letters are flush mounted with remote power supplies.

ACTION:
Manufacture and install new set of internally illuminated channel letters.

DESCRIPTION:
1. Letters are fabricated aluminum @ 5" deep.
2. Letters are internally illuminated with energy efficient LED.
3. Letter faces are .177" SG Plus
4. Faces are secured with 1" Jewelite Trimcap

COLOR SCHEDULE:

- Aluminum Returns = Painted PMS 363 Green (semi-gloss)
- 1" Jewelite trimcap painted PMS 363 Green (semi-gloss)
- Acrylic Faces = .177 SG Plus PMS 363 Green
- LEDs = Green

CODE:
Wall Signs: Not to exceed 80% of building width; Minimum 10% clear area on each outer edge of the building. Sign letters not to exceed 36 inches in height including lower case letters. Signs to be noted "remote or self contained".



EAST ELEVATION
Scale: 1/16" = 1'-0"

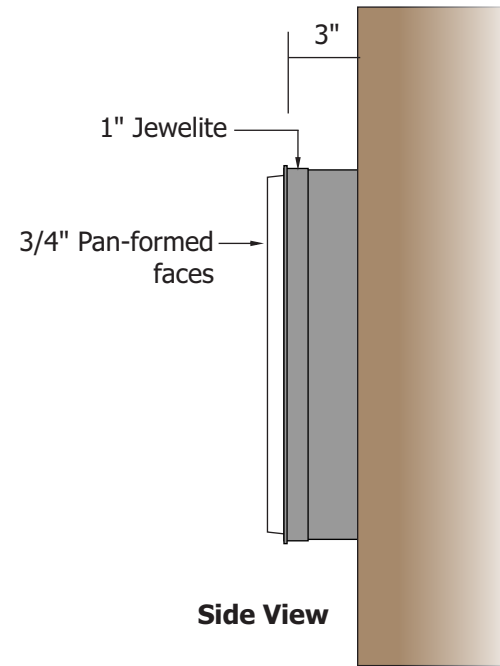
Revisions:	
...	...
...	...
...	...
...	...
...	...
...	...

PM: Tiffany S.	Address: Town Center Pkwy
Drawn By: TD	City State: Westlake, FL
Date: 10/7/2020	Drawing Number: 116550-S02



S03 Scale: 1 1/2" = 1'-0"

Square Footage: **3.87 sq ft**



Side View

ELECTRICAL NOTES

1. All materials and fasteners meet 3004.4
2. All electrical components are UL listed, labeled and approved.
3. Sign grounded according to NEC 6007.7
4. Signs manufactured and listed NEC 600.3 and marked per NEC 600.4.
5. All branch circuits per NEC 600 .5(B).1 or (B).2.
6. All Signs controlled by photocell or time clock per FBC 13-415. (ABC).1.4.
7. One visible 20 amp disconnect per sign per circuit per NEC 600.6(A).1

NOTE: This cabinet is flush mounted with internal ballast.

ACTION:

Manufacture and install new Sign Cabinet with pan-formed sign face.

DESCRIPTION:

1. New Sign Cabinet is fabricated from aluminum with painted finish.
2. Sign face is 3/4" pan-formed white polycarbonate with surface applied vinyl graphics.
3. Sign face is secured with 1" jewelite trimcap and is internally illuminated with fluorescent lamps.

COLOR SCHEDULE:

- Sign Cabinet = Painted #331EC Silver (gloss)
- Jewelite Trimcap = Silver
- Sign face = .177 white polycarbonate
- 3M 3630-43 Light Tomato Red vinyl



EAST ELEVATION
Scale: 1/16" = 1'-0"



National Headquarters: 1077 West Blue Heron Blvd.
West Palm Beach, Florida 33404
800.772.7932
www.atlasbtw.com

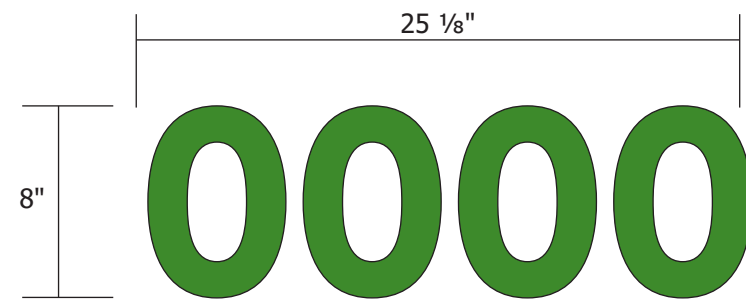
Revisions:	
...	...
...	...
...	...
...	...
...	...
...	...

S03

PM: Tiffany S.	Address: Town Center Pkwy
Drawn By: TD	City State: Westlake, FL
Date: 10/7/2020	Drawing Number: 116550-S03



S04 Scale: 1 1/2" = 1'-0"

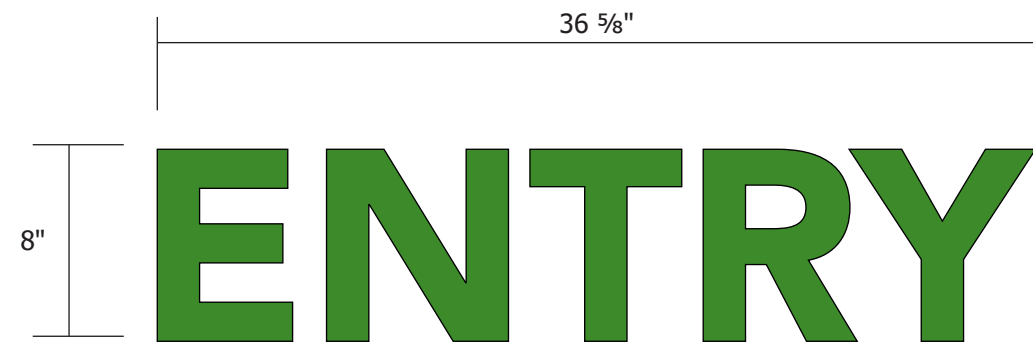


S05 Scale: 1 1/2" = 1'-0"

1/4" thick aluminum
Stud Mounted

Side View

*Address to be confirmed prior to manufacturing



S06 Scale: 1 1/2" = 1'-0"

SCOPE OF WORK:

Manufacture and install FCO copy.

DESCRIPTION:

1. Copy is flat cut out from 1/4" thick plate aluminum.
2. Stud mounted to fascia with a painted finish.

COLOR SCHEDULE:

Painted PMS 363 Green (semi-gloss)



EAST ELEVATION
Scale: 1/16" = 1'-0"



National Headquarters: 1077 West Blue Heron Blvd.
West Palm Beach, Florida 33404
800.772.7932
www.atlasbtw.com

Revisions:	
...	...
...	...
...	...
...	...
...	...
...	...

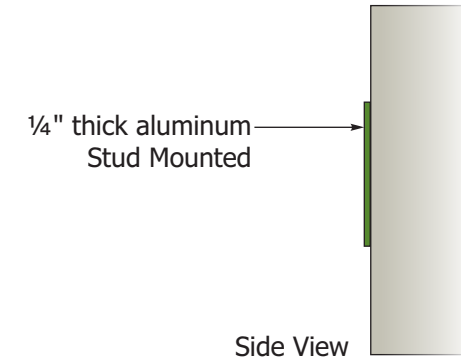
S04-6

PM: Tiffany S.	Address: Town Center Pkwy
Drawn By: TD	City State: Westlake, FL
Date: 10/7/2020	Drawing Number: 116550-S04-6



S07 Scale: 1 1/2" = 1'-0"

1.82 sq ft



SCOPE OF WORK:

Manufacture and install canopy directional sign.

COLOR SCHEDULE:

Painted PMS 363 Green (semi-gloss)

DESCRIPTION:

1. Copy is flat cut out from 1/4" thick plate aluminum.
2. Stud mounted to fascia with a painted finish.



EAST ELEVATION
Scale: 1/16" = 1'-0"

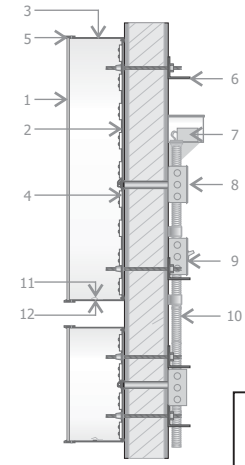
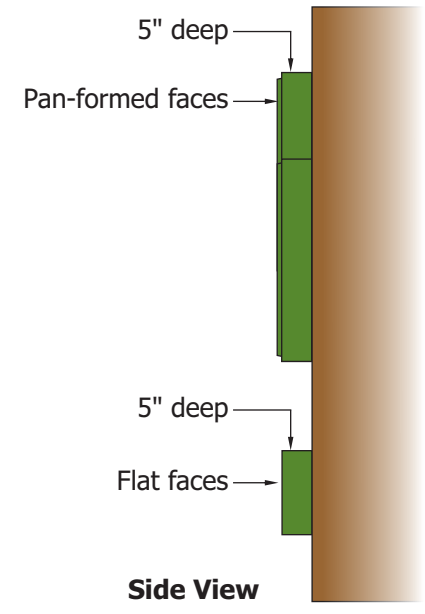
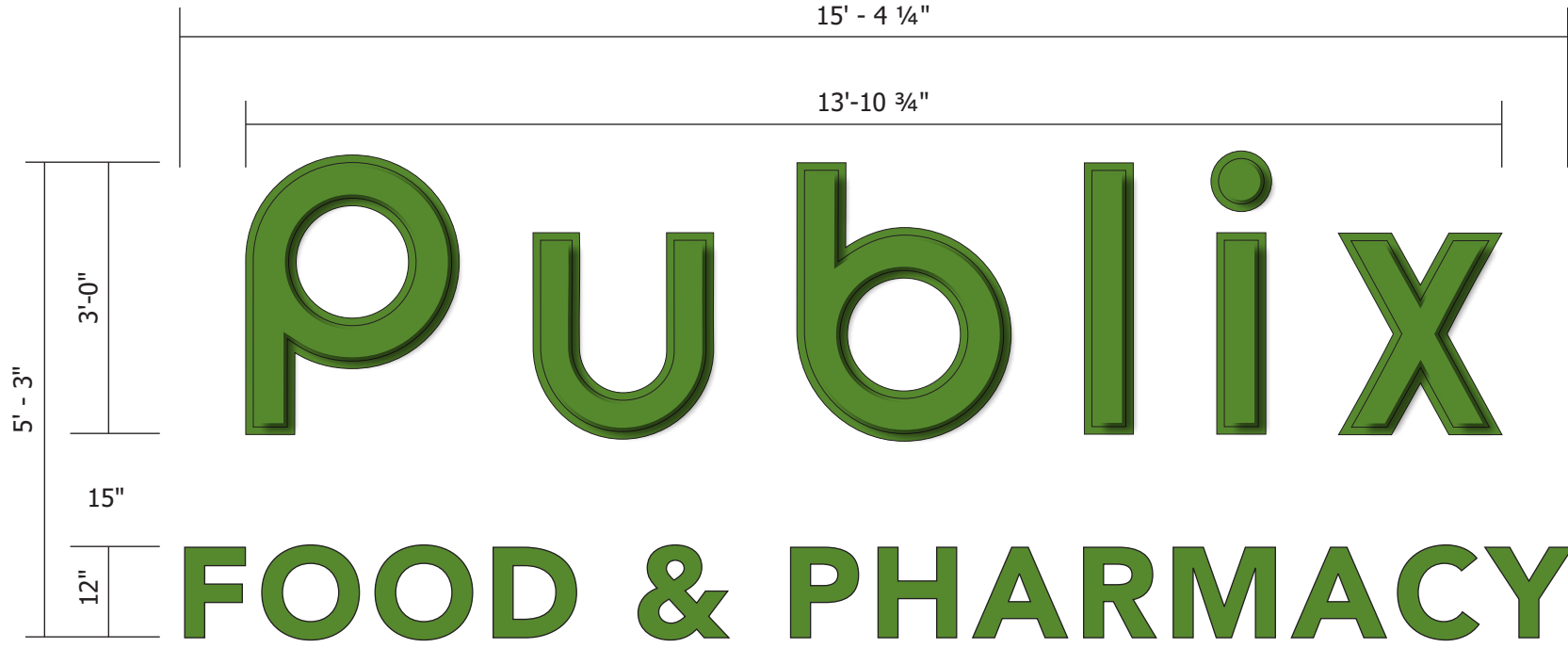


National Headquarters: 1077 West Blue Heron Blvd.
West Palm Beach, Florida 33404
800.772.7932
www.atlasbtw.com

Revisions:	
...	...
...	...
...	...
...	...
...	...
...	...

S07

PM: Tiffany S.	Address: Town Center Pkwy
Drawn By: TD	City State: Westlake, FL
Date: 10/7/2020	Drawing Number: 116550-S07



ELECTRICAL NOTES	
1.	All materials and fasteners meet 3004.4
2.	All electrical components are UL listed, labeled and approved.
3.	Sign grounded according to NEC 6007.7
4.	Signs manufactured and listed NEC 600.3 and marked per NEC 600.4.
5.	All branch circuits per NEC 600 .5(B).1 or (B).2.
6.	All Signs controlled by photocell or time clock per FBC 13-415. (ABC).1.4.
7.	One visible 20 amp disconnect per sign per circuit per NEC 600.6(A).1

1	acrylic face
2	letter backs to be .125 aluminum
3	returns to be .040 aluminum
4	illumination to be provided by LED.
5	1" trim cap
6	mounting varies upon location and wall material
7	power supply
8	junction box
9	listed disconnect switch
10	primary power source
11	weep hole cover to be white pre-finished aluminum
12	weep hole

CODE:
Wall Signs: Not to exceed 80% of building width; Minimum 10% clear area on each outer edge of the building. Sign letters not to exceed 36 inches in height including lower case letters. Signs to be noted "remote or self contained".

S08 Scale: 1/2" = 1'-0"

Square Footage: **80.6 sq ft**

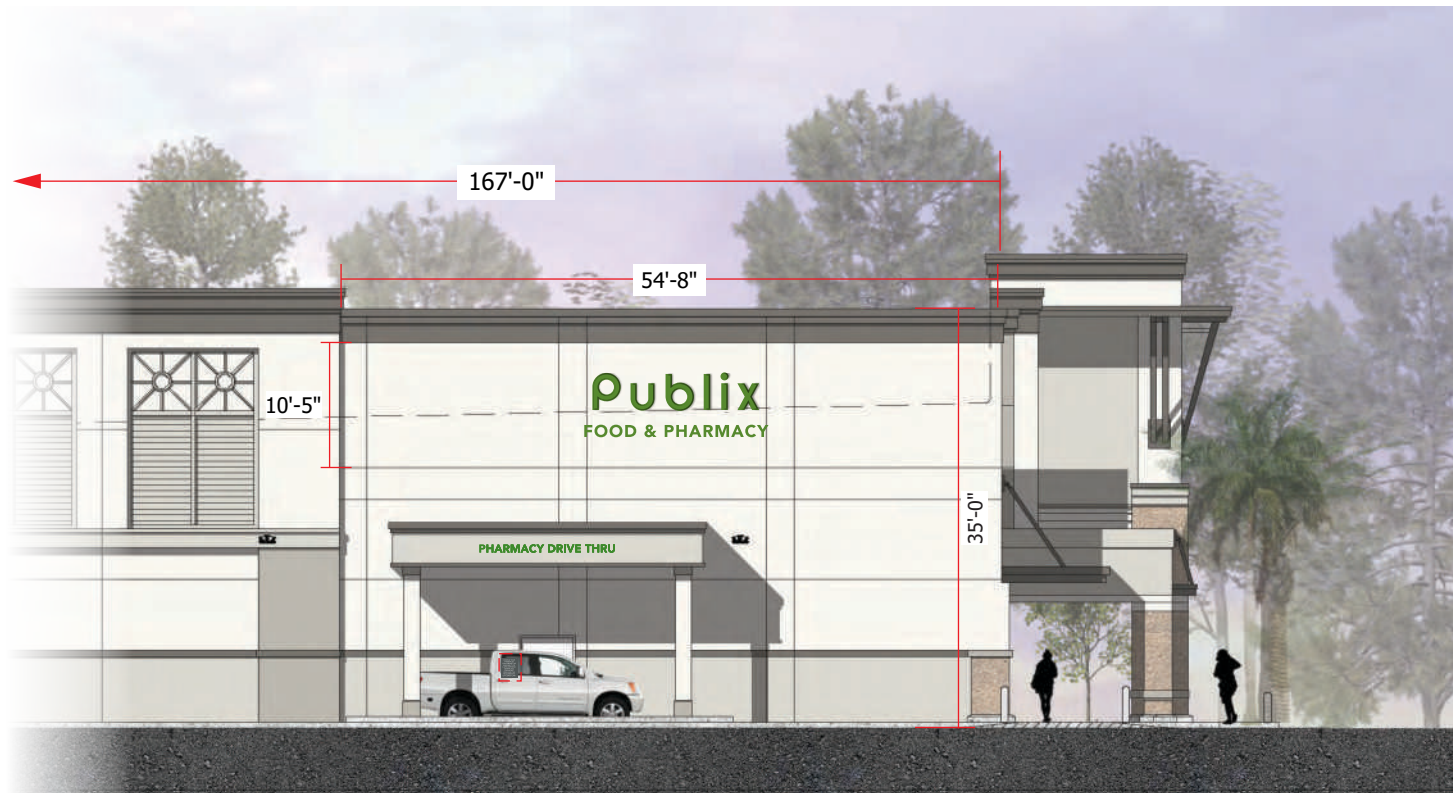
NOTE: All smaller letters to have plastic "Bird Deterrent" inserts.

NOTE: These channel letters are flush mounted with remote power supplies.

ACTION:
 Manufacture and install new set of internally illuminated channel letters.

- DESCRIPTION:**
- Letters are fabricated with .125 aluminum backs and painted (semi-gloss finish) with .063 aluminum returns @ 5" deep.
 - Letters are internally illuminated with energy efficient LED.
 - Letter faces are .177" SG Plus - panformed
 - "PUBLIX" Pan-Formed faces are secured with 1" Jewelite Trimcap
 - "F&P" Flat faces are secured with 1" Jewelite Trimcap

- COLOR SCHEDULE:**
- Aluminum Returns = Painted PMS 363 Green (semi-gloss)
 - "PUBLIX" = 1" Jewelite trimcap painted PMS 363 Green (semi-gloss)
 - "F & P" = 1" Jewelite trimcap painted PMS 363 Green (semi-gloss)
 - Acrylic Faces = .177 SG Plus PMS 363 Green
 - GE LEDs = Green



SOUTH ELEVATION
 Scale: 1/16" = 1'-0"



National Headquarters: 1077 West Blue Heron Blvd.
 West Palm Beach, Florida 33404
 800.772.7932
 www.atlasbtw.com

Revisions:	
...	...
...	...
...	...
...	...
...	...
...	...

S08

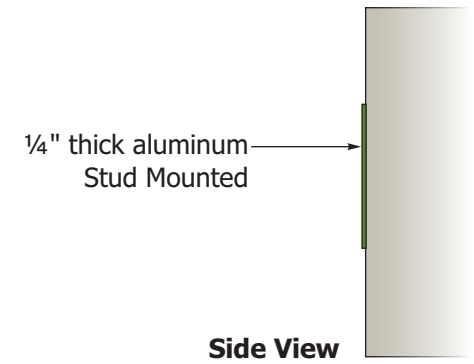
PM: Tiffany S.	Address: Town Center Pkwy
Drawn By: TD	City State: Westlake, FL
Date: 10/7/2020	Drawing Number: 116550-S08

11'- 3 1/2"

PHARMACY DRIVE THRU

S09 Scale: 1" = 1'-0"

Square Footage: **16.91 sq ft**



SCOPE OF WORK:

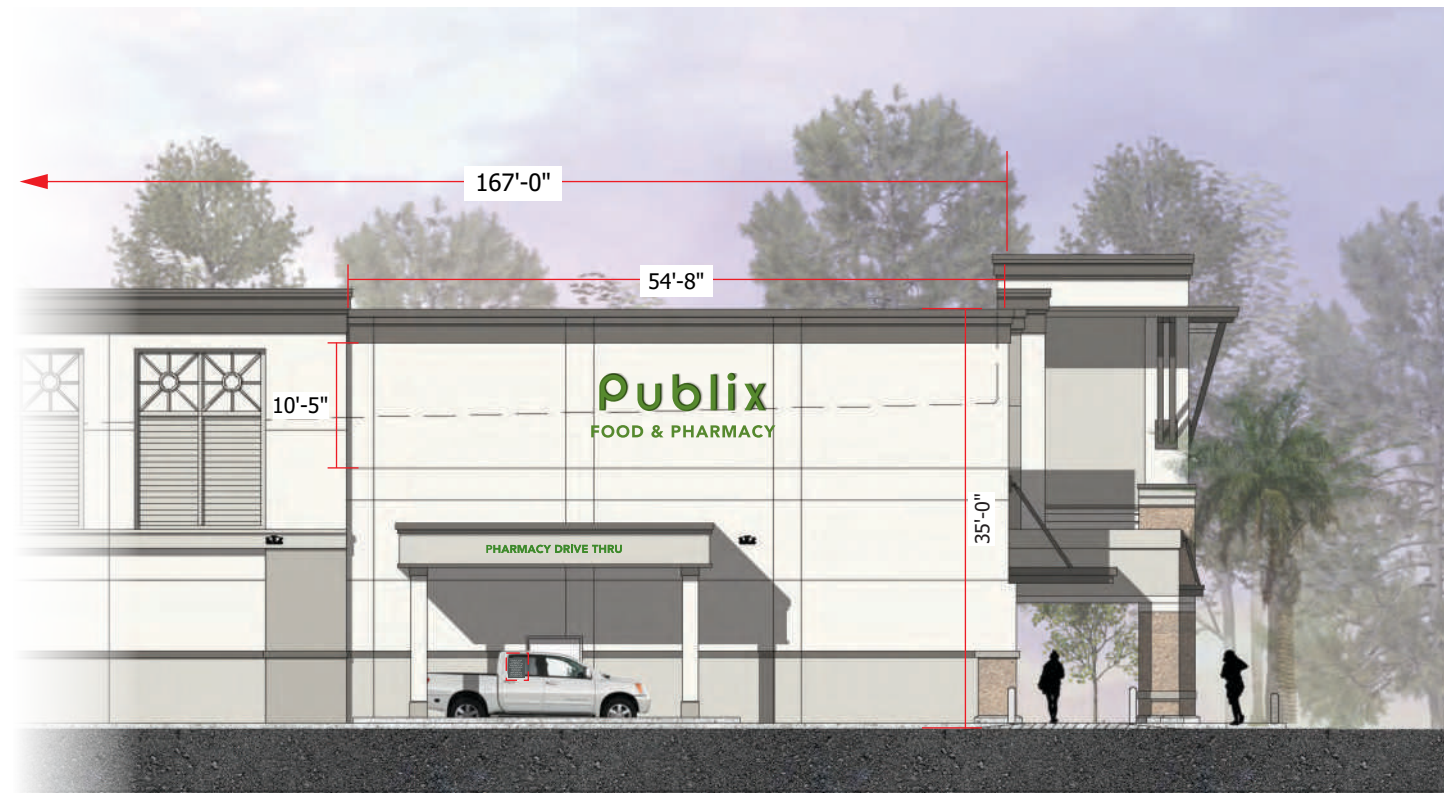
Manufacture and install canopy sign.

DESCRIPTION:

1. Copy is flat cut out from 1/4" thick plate aluminum.
2. Stud mounted to fascia with a painted finish.

COLOR SCHEDULE:

Painted PMS 363 Green (semi-gloss)



SOUTH ELEVATION

Scale: 1/16" = 1'-0"

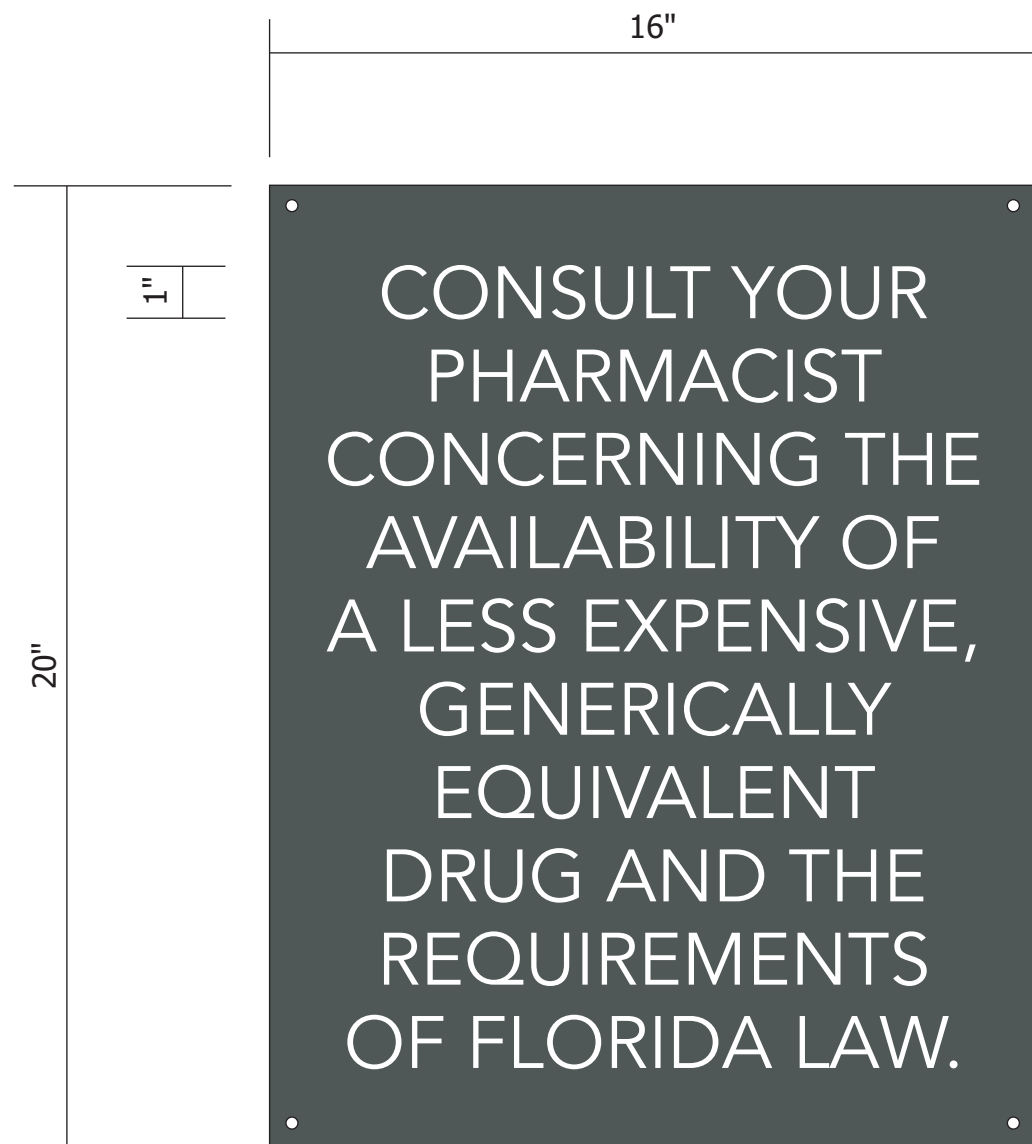


National Headquarters: 1077 West Blue Heron Blvd.
West Palm Beach, Florida 33404
800.772.7932
www.atlasbtw.com

Revisions:	
...	...
...	...
...	...
...	...
...	...
...	...

S09

PM: Tiffany S.	Address: Town Center Pkwy
Drawn By: TD	City State: Westlake, FL
Date: 10/7/2020	Drawing Number: 116550-S09



.125" aluminum sign
flush mounted to wall
with (4) screws



Side View

S10 Scale: 3" = 1'-0"

Square Footage: **2.22 sq ft**

SCOPE OF WORK:

Manufacture and install S/F Wall Sign

DESCRIPTION:

1. Wall Sign is flat aluminum with digitally printed graphics with UV Coating.
2. Flush mounted to fascia with screws in each corner.

COLOR SCHEDULE:

 Pantone 445 Gray with white copy

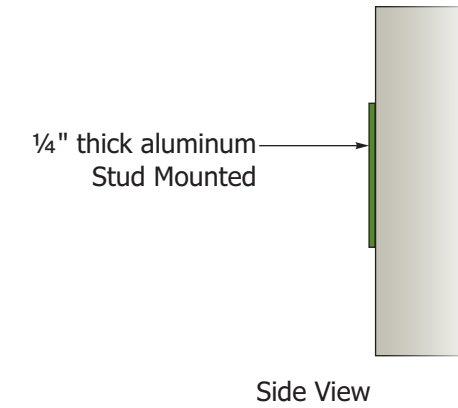
Revisions:	
...	...
...	...
...	...
...	...
...	...

PM: Tiffany S.	Address: Town Center Pkwy
Drawn By: TD	City State: Westlake, FL
Date: 10/7/2020	Drawing Number: 116550-S10



S11 Scale: 1 1/2" = 1'-0"

2.2 sq ft



SCOPE OF WORK:

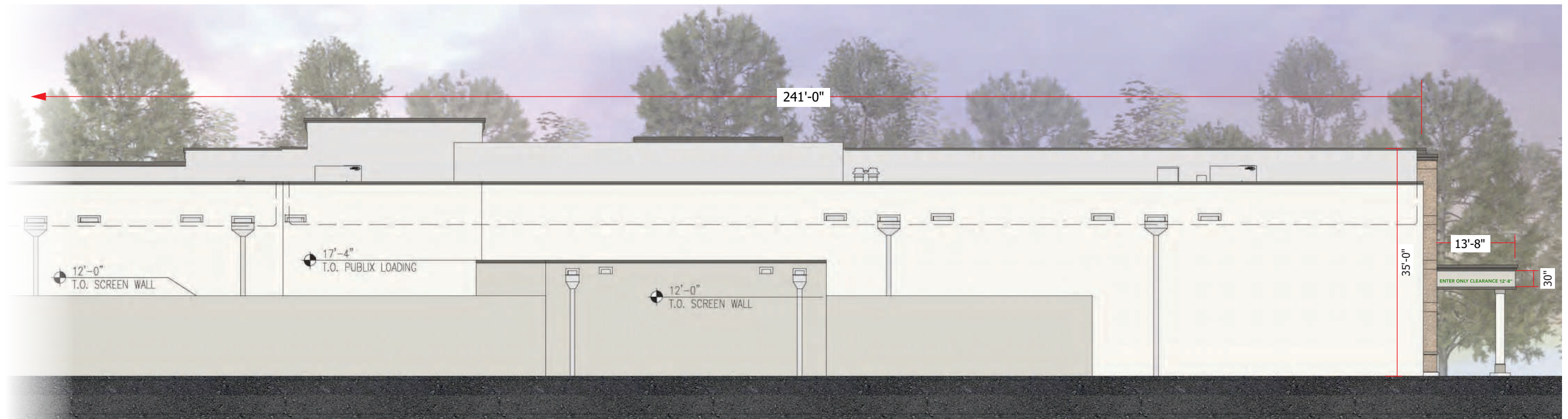
Manufacture and install canopy directional sign. Sign to be FCO letters.

DESCRIPTION:

1. Copy is flat cut out from 1/4" thick plate aluminum.
2. Stud mounted to fascia with a painted finish.

COLOR SCHEDULE:

Painted PMS 363 Green (semi-gloss)



EAST ELEVATION
Scale: 1/16" = 1'-0"

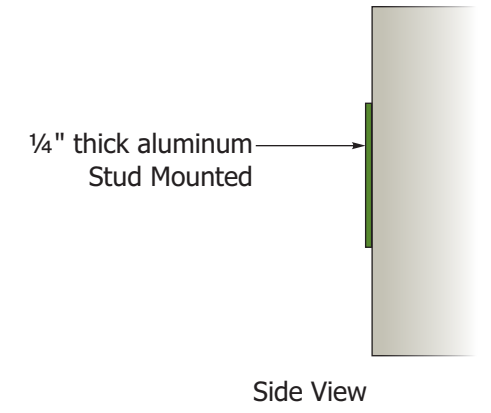
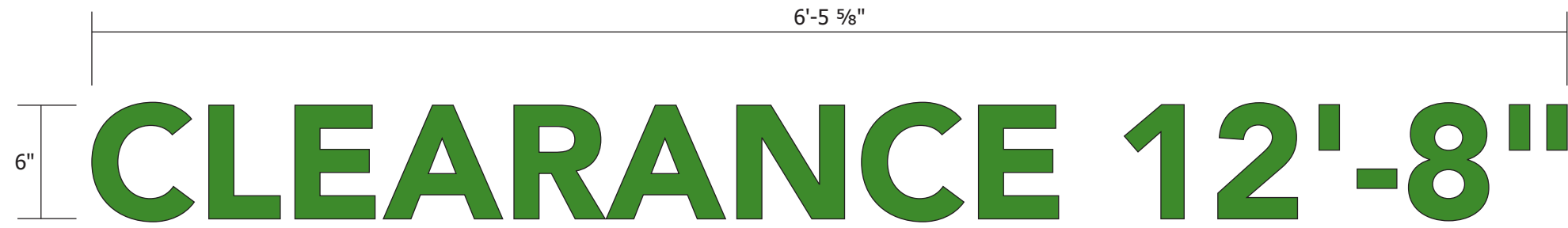


National Headquarters: 1077 West Blue Heron Blvd.
West Palm Beach, Florida 33404
800.772.7932
www.atlasbtw.com

Revisions:	
...	...
...	...
...	...
...	...
...	...
...	...

S11

PM: Tiffany S.	Address: Town Center Pkwy
Drawn By: TD	City State: Westlake, FL
Date: 10/7/2020	Drawing Number: 116550-S11



S12 Scale: 1" = 1'-0"

3.23 sq ft

SCOPE OF WORK:

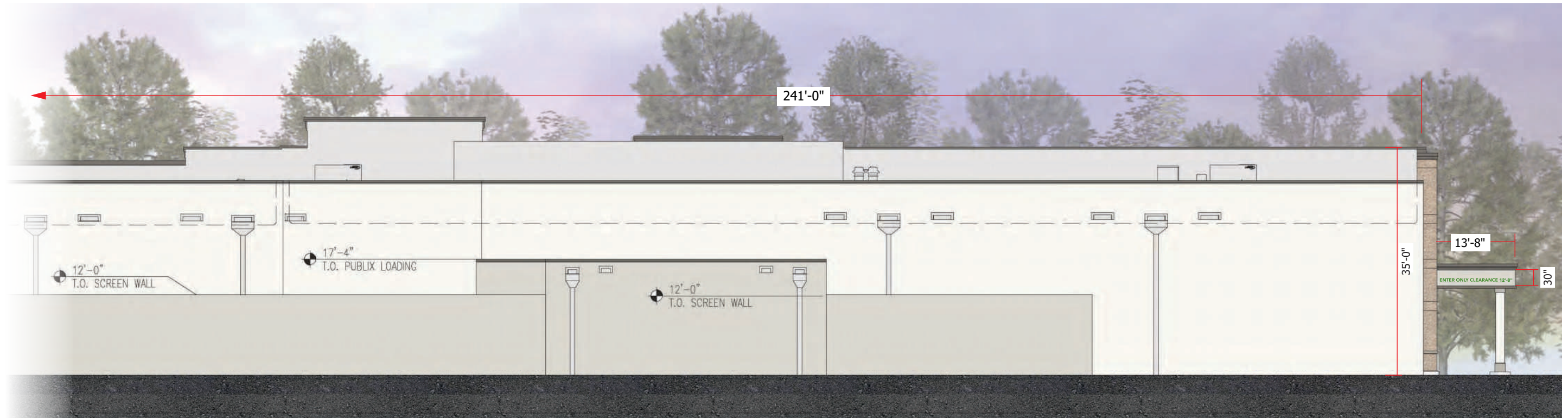
Manufacture and install clearance sign.

DESCRIPTION:

1. Copy is flat cut out from 1/4" thick plate aluminum.
2. Stud mounted to fascia with a painted finish.

COLOR SCHEDULE:

- Painted PMS 363 Green (semi-gloss)



EAST ELEVATION
Scale: 1/16" = 1'-0"

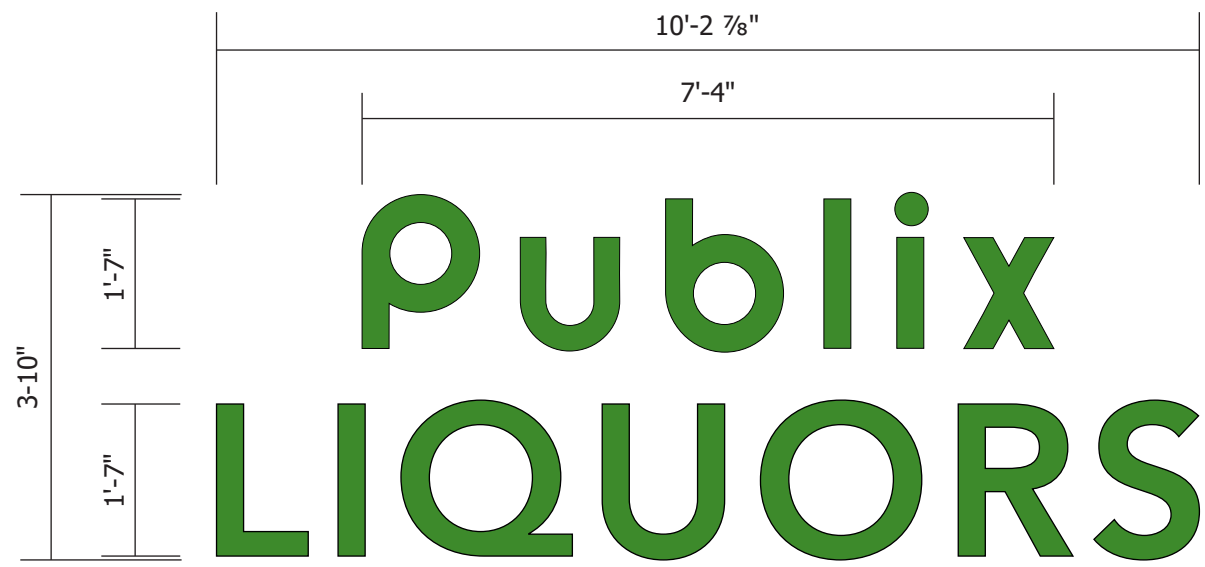


National Headquarters: 1077 West Blue Heron Blvd.
West Palm Beach, Florida 33404
800.772.7932
www.atlasbtw.com

Revisions:	
...	...
...	...
...	...
...	...
...	...
...	...

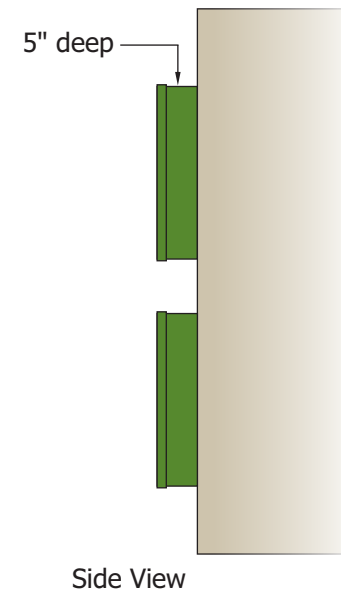
S12

PM: Tiffany S.	Address: Town Center Pkwy
Drawn By: TD	City State: Westlake, FL
Date: 10/7/2020	Drawing Number: 116550-S12



S13 Scale: 1/2" = 1'-0"

Square Footage:
45.94" x 122.86" = 39.2 sq ft



ELECTRICAL NOTES	
1.	All materials and fasteners meet 3004.4
2.	All electrical components are UL listed, labeled and approved.
3.	Sign grounded according to NEC 6007.7
4.	Signs manufactured and listed NEC 600.3 and marked per NEC 600.4.
5.	All branch circuits per NEC 600 .5(B).1 or (B).2.
6.	All Signs controlled by photocell or time clock per FBC 13-415. (ABC).1.4.
7.	One visible 20 amp disconnect per sign per circuit per NEC 600.6(A).1

SCOPE OF WORK:

Manufacture and install new set of internally illuminated channel letters.

DESCRIPTION:

1. Letters are fabricated aluminum @ 5" deep.
2. Letter faces are .177" SG Plus
3. Faces are secured with 1" jewelite trimcap.
4. Letters are internally illuminated with energy efficient LED

COLOR SCHEDULE:

- Aluminum Returns = Painted PMS 363 Green (semi-gloss)
- 1" Jewelite trimcap PMS 363 Green (semi-gloss)
- Acrylic Faces = .177 SG Plus PMS 363 Green
- LEDs = Green

NOTE: All letters to have plastic "Bird Deterrent" inserts.



EAST ELEVATION
Scale: 1/16" = 1'-0"



National Headquarters: 1077 West Blue Heron Blvd.
West Palm Beach, Florida 33404
800.772.7932
www.atlasbtw.com

Revisions:	
...	...
...	...
...	...
...	...
...	...
...	...

S13

PM: Tiffany S.	Address: Town Center Pkwy
Drawn By: TD	City State: Westlake, FL
Date: 10/7/2020	Drawing Number: 116550-S13



OPPOSITE SIDE

S14 S15 S16 Scale: 1 1/2" = 1' - 0"

SCOPE OF WORK:

1. Fabricate D/F informational parking signs as shown and described.
2. On site install signs in designated areas.

DESCRIPTION:

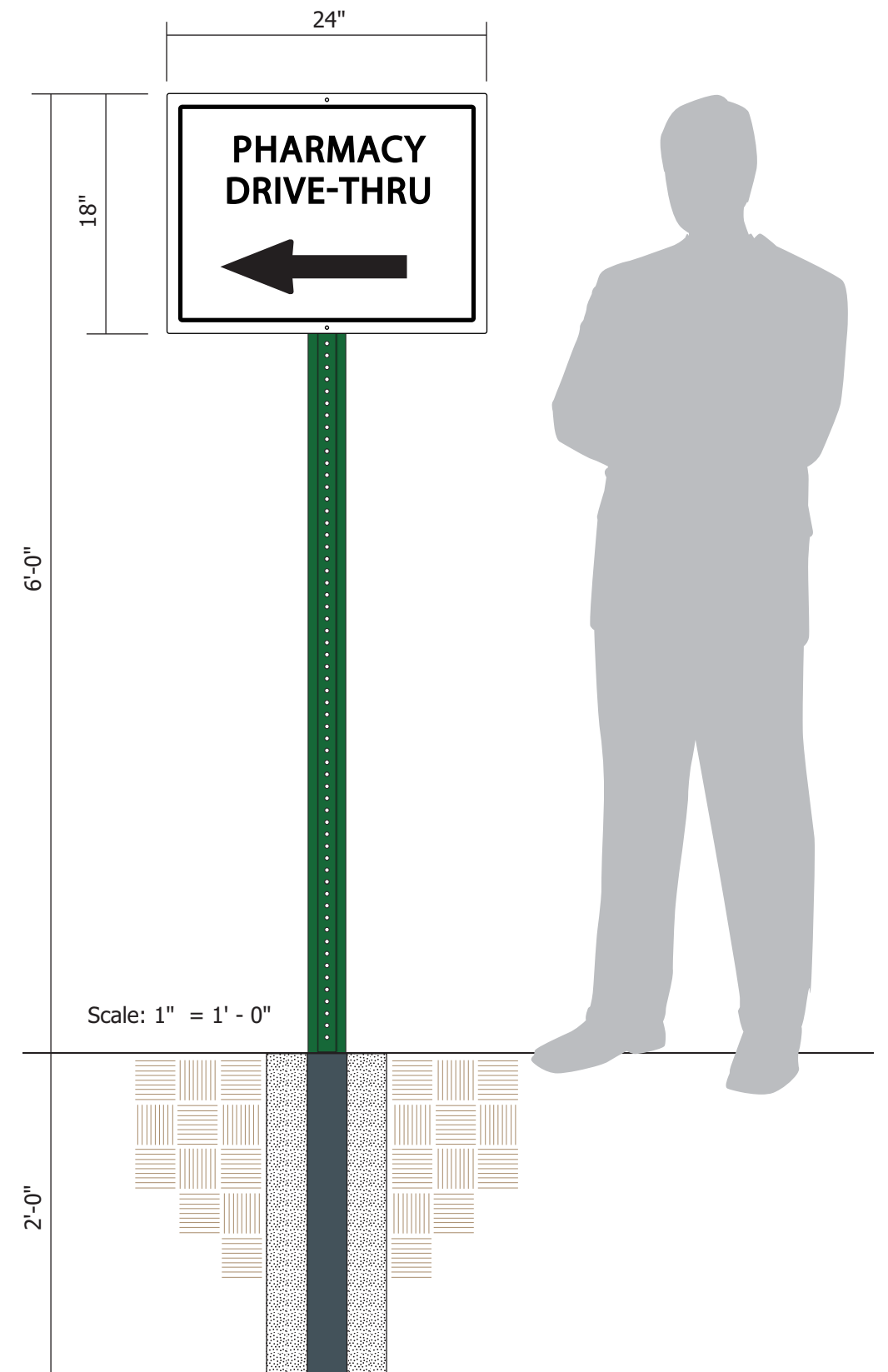
1. Sign panel is .125" aluminum with painted finish.
2. Sign mounts to standard DOT U-channel post.
3. Vinyl graphics are applied on exterior surface.
4. Post is embedded in 9" diameter by 24" deep footing filled with ready mix concrete.

COLOR SCHEDULE:

- White on White Aluminum Background
- Vinyl Graphics = 3M 3630-22 Black vinyl

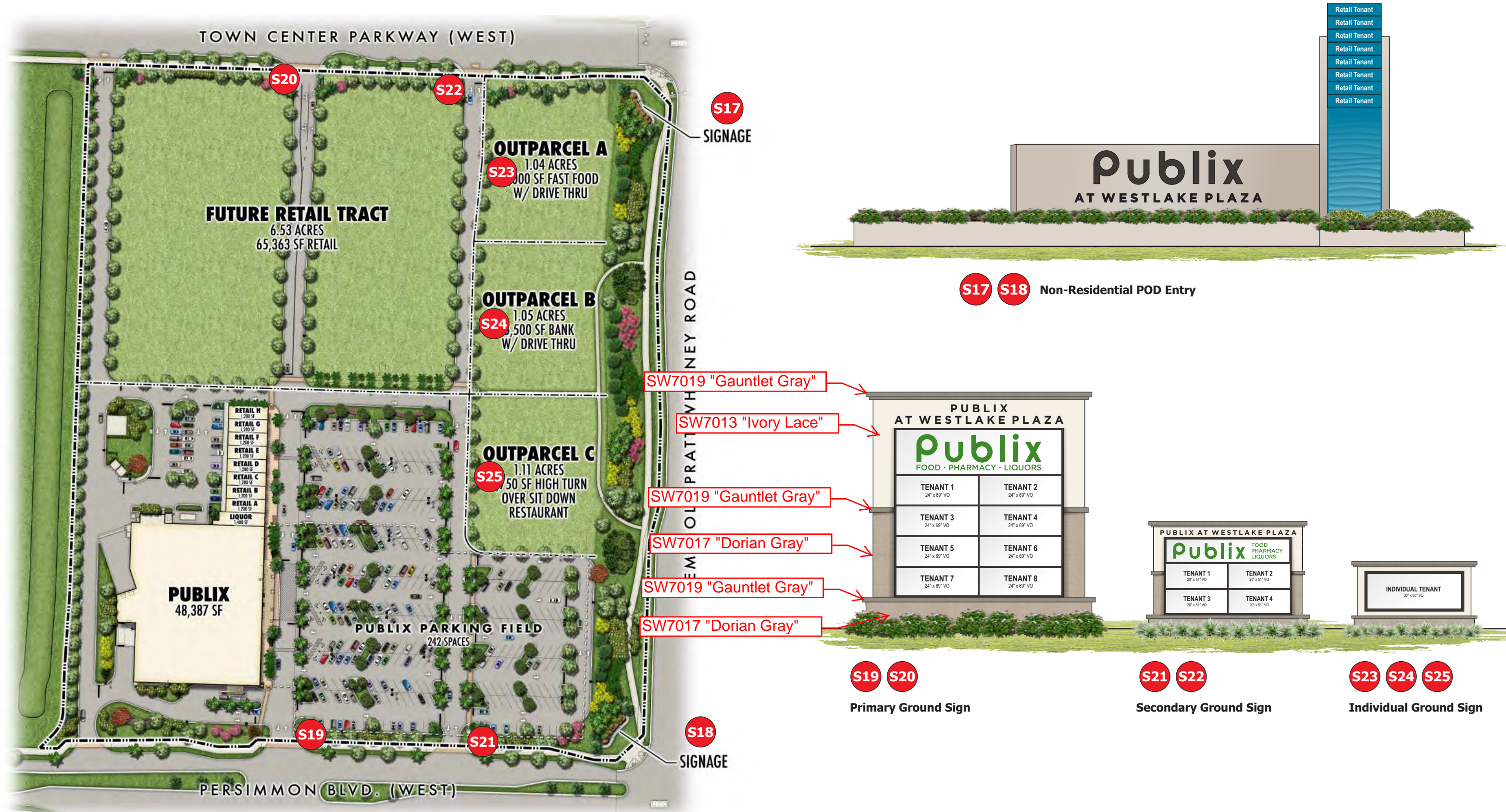
SQUARE FOOTAGE:

Proposed = 1.5' x 2.0' = 3.0 Total SF



Revisions:	
...	...
...	...
...	...
...	...
...	...
...	...

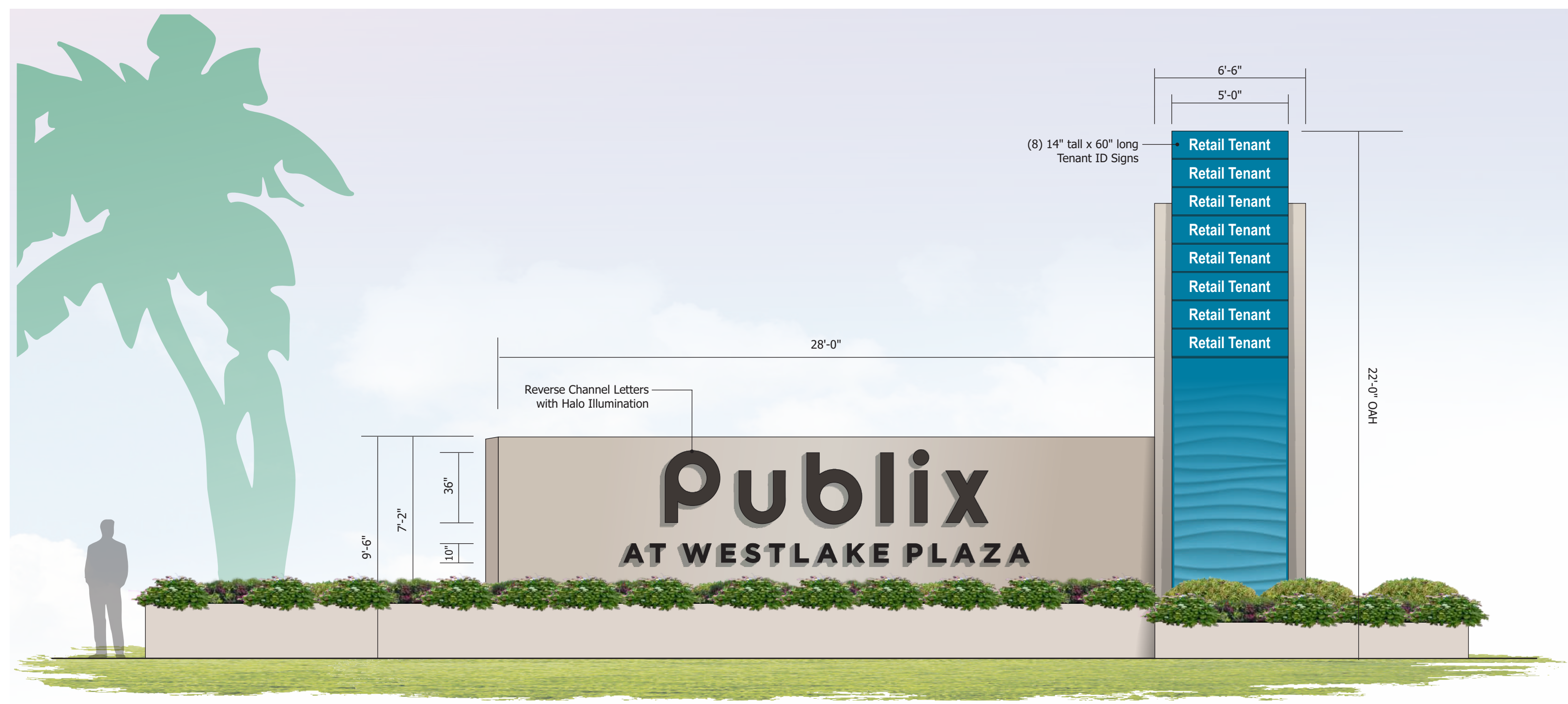
Key for Westlake Tenant Property Signage



National Headquarters: 1077 West Blue Heron Blvd.
 West Palm Beach, Florida 33404
 800.772.7932
 www.atlasbtw.com

Revisions:		
10/20/20 js	...	
10/23/20 js	...	
11/12/20 Sign Colors Schedule Added	...	
...	...	
...	...	

Publix at Westlake Plaza Ground Signs - Color Schedule



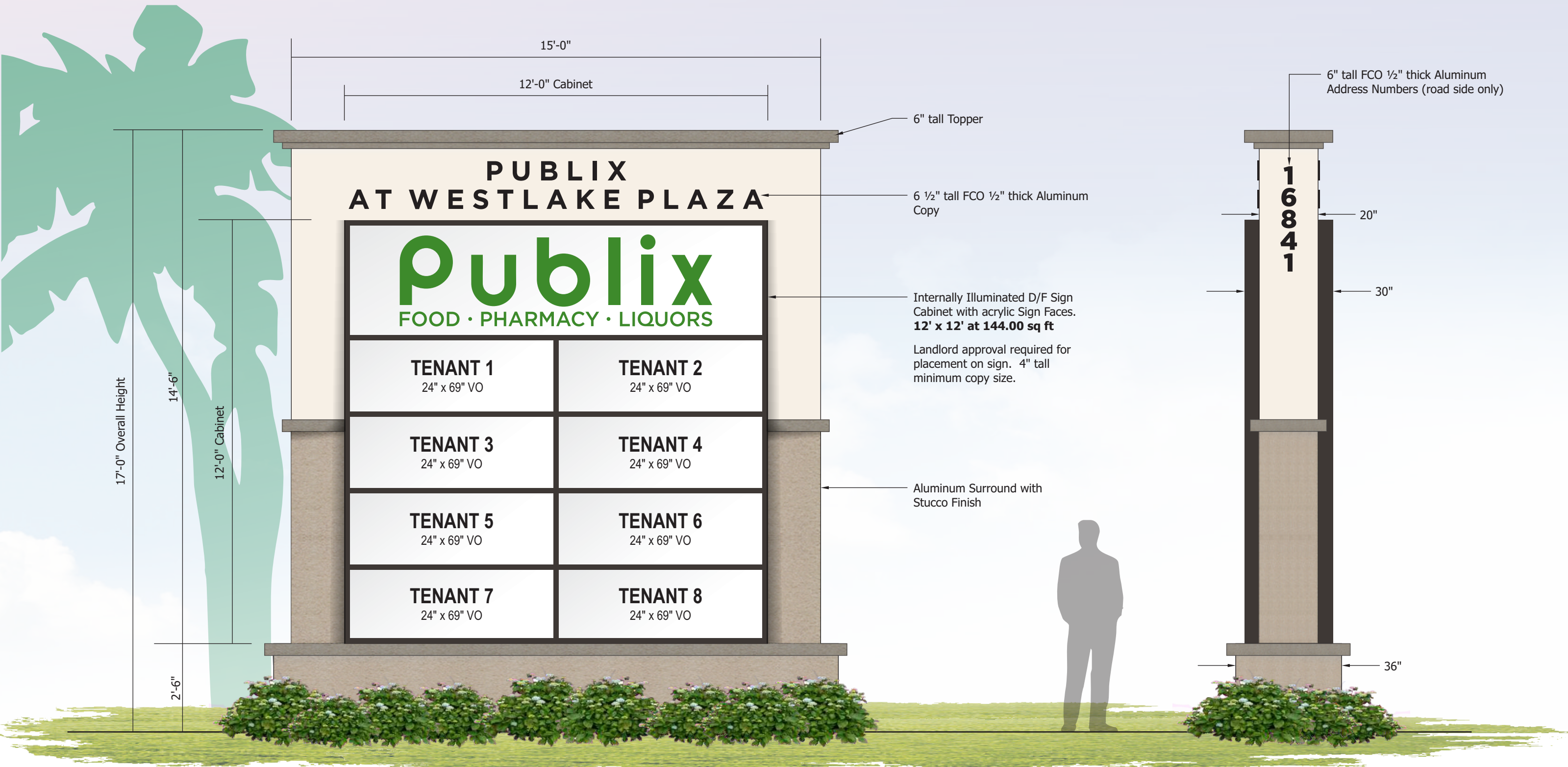
S17 S18 **Non-Residential POD Entry**
 Scale: 1/4" = 1'-0"



National Headquarters: 1077 West Blue Heron Blvd.
 West Palm Beach, Florida 33404
 800.772.7932
 www.atlasbtw.com

Revisions:	
10/20/20 js	...
10/23/20 js	...
...	...
...	...
...	...

Publix at Westlake Plaza
Non-Residential POD Entry



S19 S20 **Primary Ground Sign**
 Scale: 3/8" = 1'-0"

17' x 15' = 255.00 sq ft

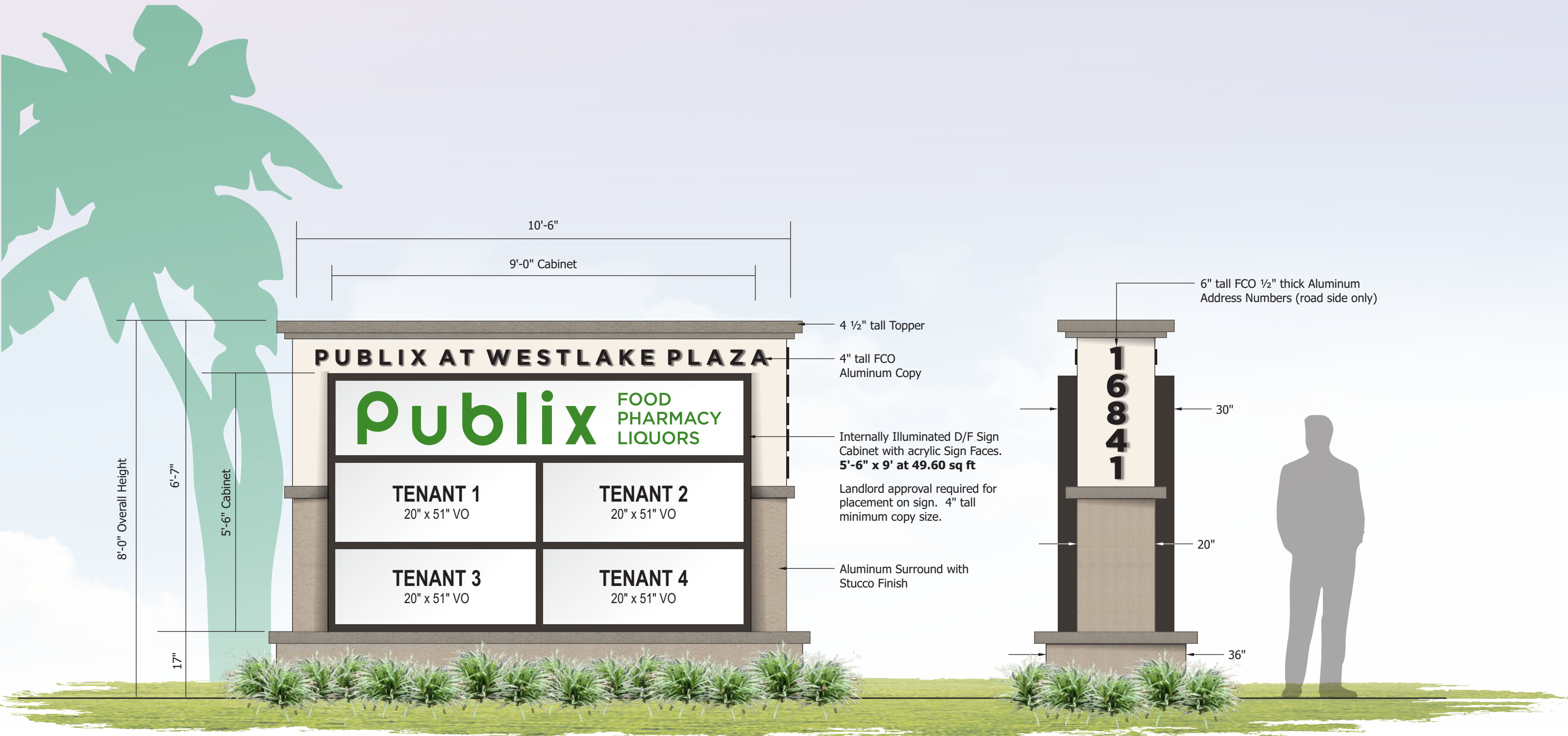
Side View



National Headquarters: 1077 West Blue Heron Blvd.
 West Palm Beach, Florida 33404
 800.772.7932
 www.atlasbtw.com

Revisions:	
10/20/20 js	...
10/23/20 js	...
...	...
...	...
...	...
...	...

Publix at Westlake Plaza
Primary Ground Sign



S21 S22 **Secondary Ground Sign**
 Scale: 1/2" = 1'-0"

8' x 10'-6" = **84.00 sq ft**

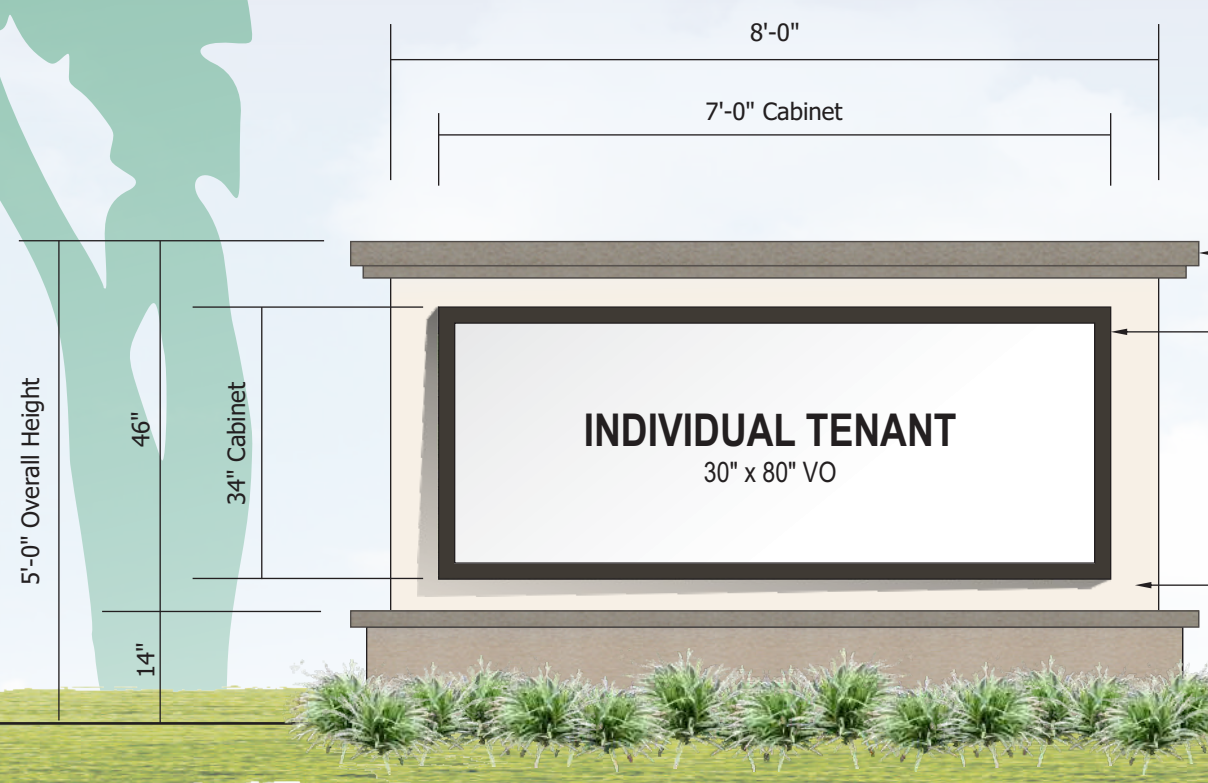
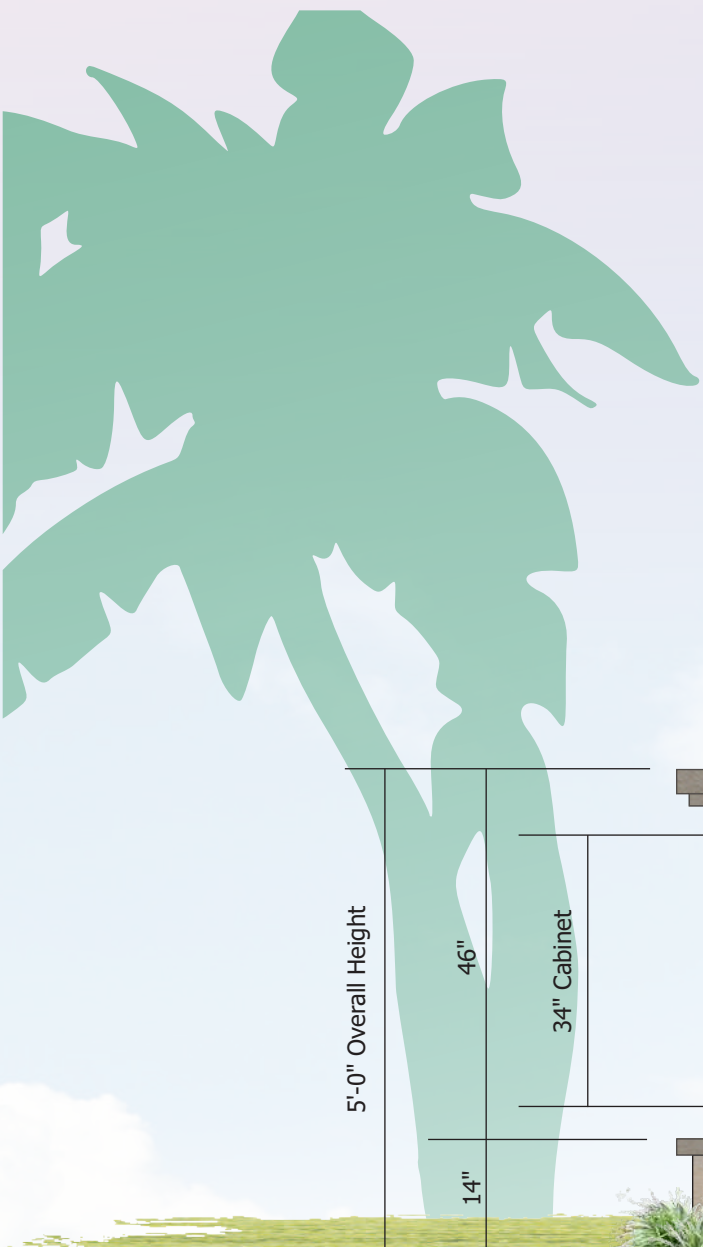
Side View



National Headquarters: 1077 West Blue Heron Blvd.
 West Palm Beach, Florida 33404
 800.772.7932
 www.atlasbtw.com

Revisions:	
10/20/20 js	...
10/23/20 js	...
...	...
...	...
...	...

Publix at Westlake Plaza
Secondary Ground Sign

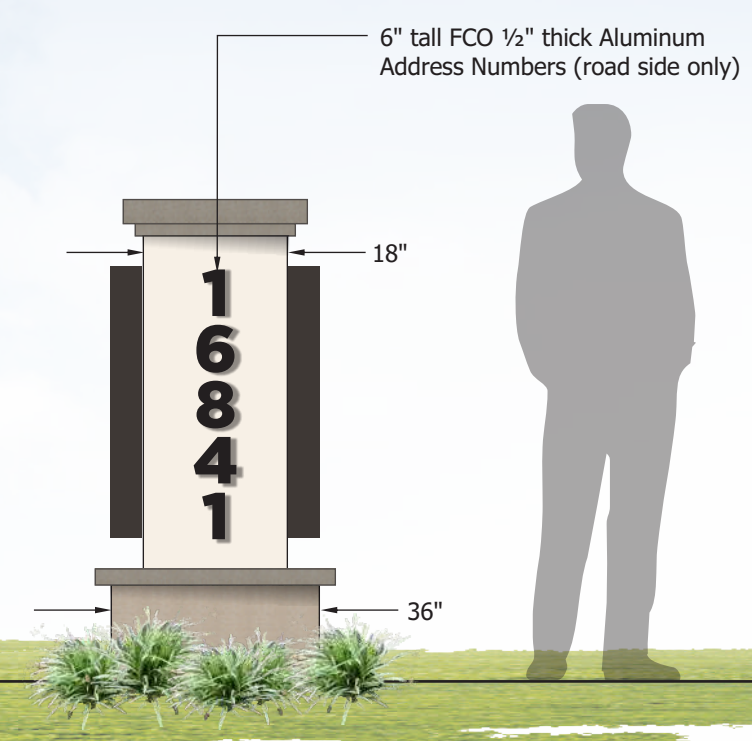


4 1/2" Aluminum Topper

Internally Illuminated S/F Sign Cabinets
4" deep with acrylic Sign Faces mounted
back to back on Base.
2'-10" x 7' at 19.83 sq ft

Landlord approval required for
placement on sign. 4" tall
minimum copy size.

Aluminum Surround with
Stucco Finish



S23 S24 S25 **Individual Ground Sign**
Scale: 1/2" = 1'-0"

5' x 8" = **40.00 sq ft**

Side View



National Headquarters: 1077 West Blue Heron Blvd.
West Palm Beach, Florida 33404
800.772.7932
www.atlasbtw.com

Revisions:	
10/20/20 js	...
10/23/20 js	...
...	...
...	...
...	...

Publix at Westlake Plaza
Individual Ground Sign



EAST ELEVATION - Scale: 1/16" = 1'-0"

TENANT SIGNAGE CRITERIA:

- Max sign height 24"; Two lines of copy Max.
- Tenant with double faced fascia (end cap) shall be allowed an additional sign.
- Max layout length shall not exceed 75% of façade width.
- Allowable square footage shall not exceed 75% of the linear length, Max 70 SF.
- Channel Letters shall be Helvetica Bold, Helvetica Medium or Americana Extra Bold.
- Letters shall be all caps unless approved by Landlord.
- Regional and National chains are permitted to use brand logo if approved by Landlord.

- Sign Type: LED internally illuminated plastic face channel letters. Returns are aluminum and faces are secured with 1" jewelite trimcap.
- Mounting Method: 4" x 4" aluminum wireway, which houses the power supplies.
- All logos must be fabricated channel letters .040 aluminum, 4" returns in enamel paint approved by Landlord.
- All signs shall be U.L. Wired and labeled U.L. Approved.

LANDLORD APPROVAL:

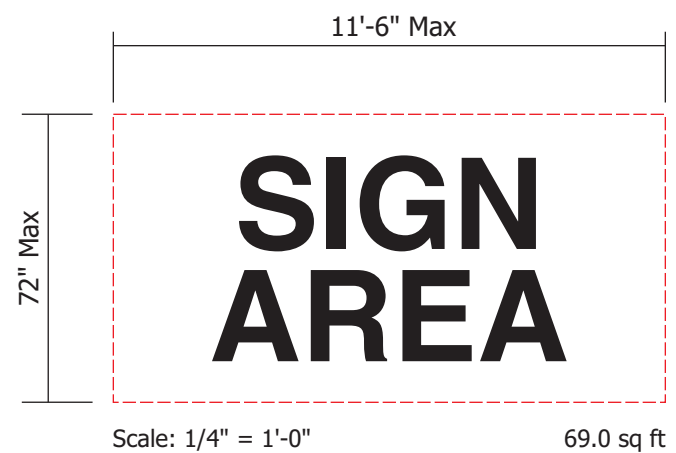
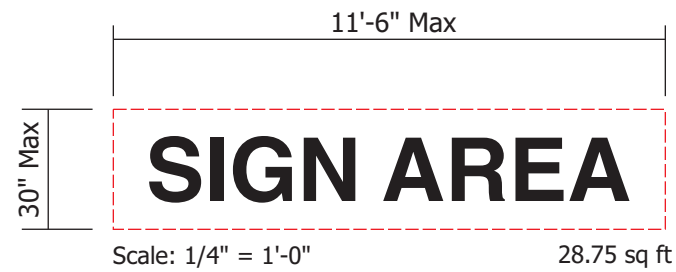
- Prior to sign fabrication and installation, Tenant shall submit fully specified sign drawings to Landlord for review and approval.

COMPLIANCE WITH LAWS:

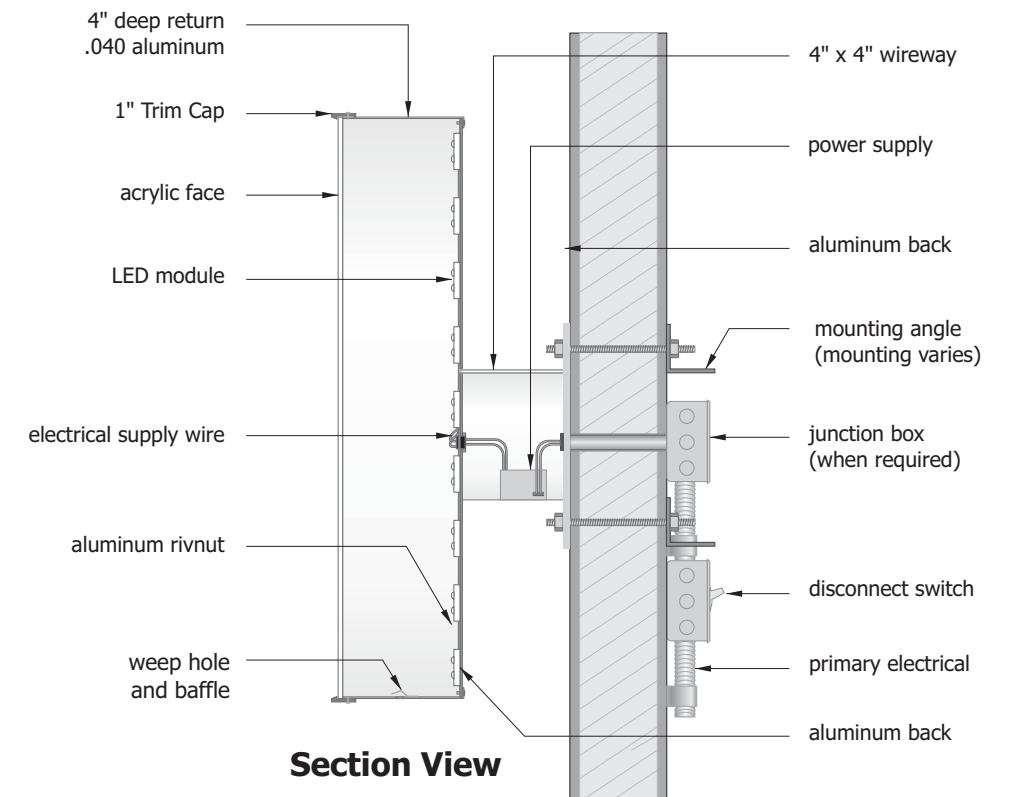
- All signs must comply with local building and zoning department requirements.

INSTALLATION:

- All signs must be installed by a licensed and insured sign contractor.



NOTE FOR EACH TENANT:
 - Maximum letter height is 24".
 - Maximum square footage is 70.00



- Section View**
- ELECTRICAL NOTES**
1. All materials and fasteners meet 3004.4
 2. All electrical components are UL listed, labeled and approved.
 3. Sign grounded according to NEC 6007.7
 4. Signs manufactured and listed NEC 600.3 and marked per NEC 600.4.
 5. All branch circuits per NEC 600 .5(B).1 or (B).2.
 6. All Signs controlled by photocell or time clock per FBC 13-415. (ABC).1.4.
 7. One visible 20 amp disconnect per sign per circuit per NEC 600.6(A).1



National Headquarters: 1077 West Blue Heron Blvd.
 West Palm Beach, Florida 33404
 800.772.7932
 www.atlasbtw.com

Revisions:		
10/20/20 js	...	
10/23/20 js	...	
...	...	
...	...	
...	...	
...	...	