



**CITY OF WESTLAKE**  
**Engineering Department**  
4001 Seminole Pratt Whitney Road  
Westlake, Florida 33470  
Phone: (561) 530-5880  
www.westlakegov.com

## STAFF MEMORANDUM

**DATE:** 3/25/2021  
**PETITION NO.:** ENG-2020-36  
**DESCRIPTION:** Review of Plat for Town Center Parkway Phase III – Plat  
**APPLICANT:** Cotleur and Hearing  
**OWNER:** Minto PBLH, LLC  
**REQUEST:** Applicant (Minto PBLH, LLC) is requesting approval of the Plat for Town Center Parkway Phase III – Plat Final Recommendation

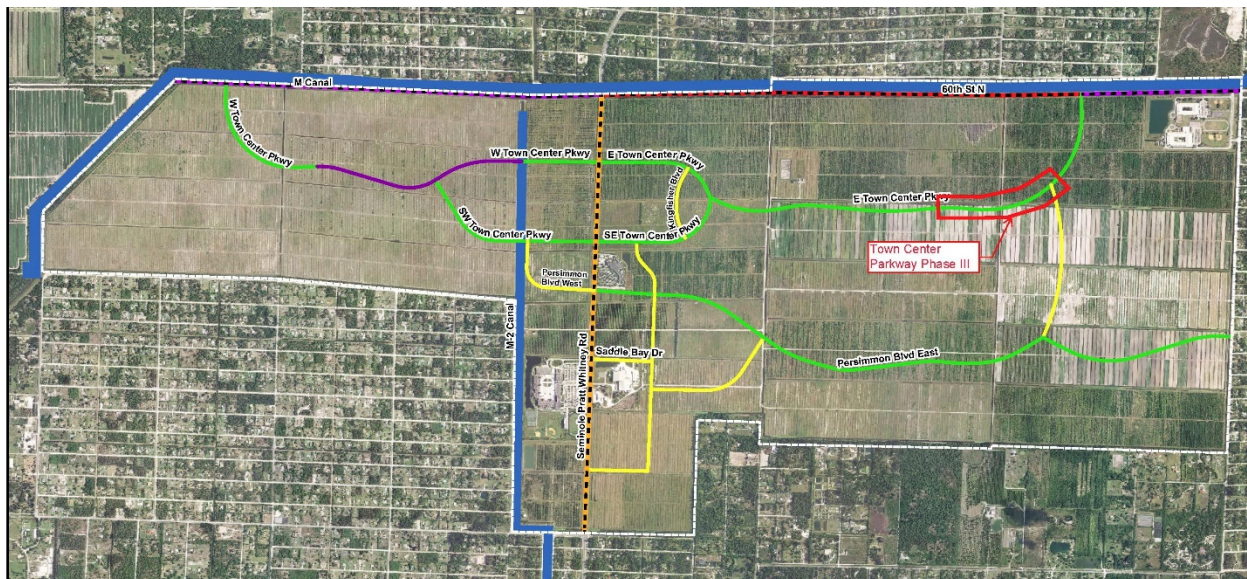
### Final Recommendation

The Office of the City Engineer has reviewed the documents associated with the application referenced above and recommends approval by the Council. Approval by the Seminole Improvement District's Engineering Department and Board of Supervisors is scheduled for May 5, 2021.

### Discussion

This portion of Town Center Parkway is located within the northeast portion of Westlake, adjacent to previously platted areas of Town Center Parkway. See graphic below for location.

### Location Map



Town Center Parkway Phase III is in Section 5, Township 43 South, Range 41 East in the City of Westlake, Palm Beach County, FL. Works of Seminole Improvement District (SID) that are involved with the permit include utilities (potable watermain and reuse watermain) and drainage structures and pipes. The project includes construction of a 0.40-mile road with utilities and drainage. Once completed the road will serve as a collector road within the City of Westlake, connecting internal commercial and residential pods to the main exit and entrance routes. The project area is +/- 8.816 acres. The Legal Description of the Plat can be found in Exhibit A, and replications of the plat topographical survey and plat can be found in Exhibits B and C, respectively.

## Review Criteria

Plats shall be prepared in accordance with the provisions of Chapter 177 F.S., as amended, and the City of Westlake Land Development Regulations. The plat was reviewed for clarity, legibility, and conformance with this statute and City requirements. The plat provides a graphic depiction of the legal description through geometric data. The data includes but is not limited to parcel, block, tract, right-of-way, street and associated names, easement, permanent reference monuments and permanent control points, and interior excepted parcels. Other requirements such as paper size, line work, layout of sheet and required content including the subdivision name, title, legal description, key map, vicinity map, north arrow, scale and legend are verified in the Engineering Department review.

## Conclusion

Two (2) reviews of the plat occurred, which resulted in an acceptable plat. The review was done for compliance with Chapters 177, 5J-17, Florida Statutes, and the City of Westlake's codes and ordinances. All comments have been adequately addressed and the plat is in compliance. We therefore recommend that the plat be approved for recording.

Exhibit 'A'  
TOWN CENTER PARKWAY PHASE III  
LEGAL DESCRIPTION

THIS SPACE INTENTIONALLY LEFT BLANK

Exhibit 'B'  
TOWN CENTER PARKWAY PHASE III  
TOPOGRAPHICAL SURVEY

THIS SPACE INTENTIONALLY LEFT BLANK

Exhibit 'C'  
TOWN CENTER PARKWAY PHASE III  
PLAT

THIS SPACE INTENTIONALLY LEFT BLANK