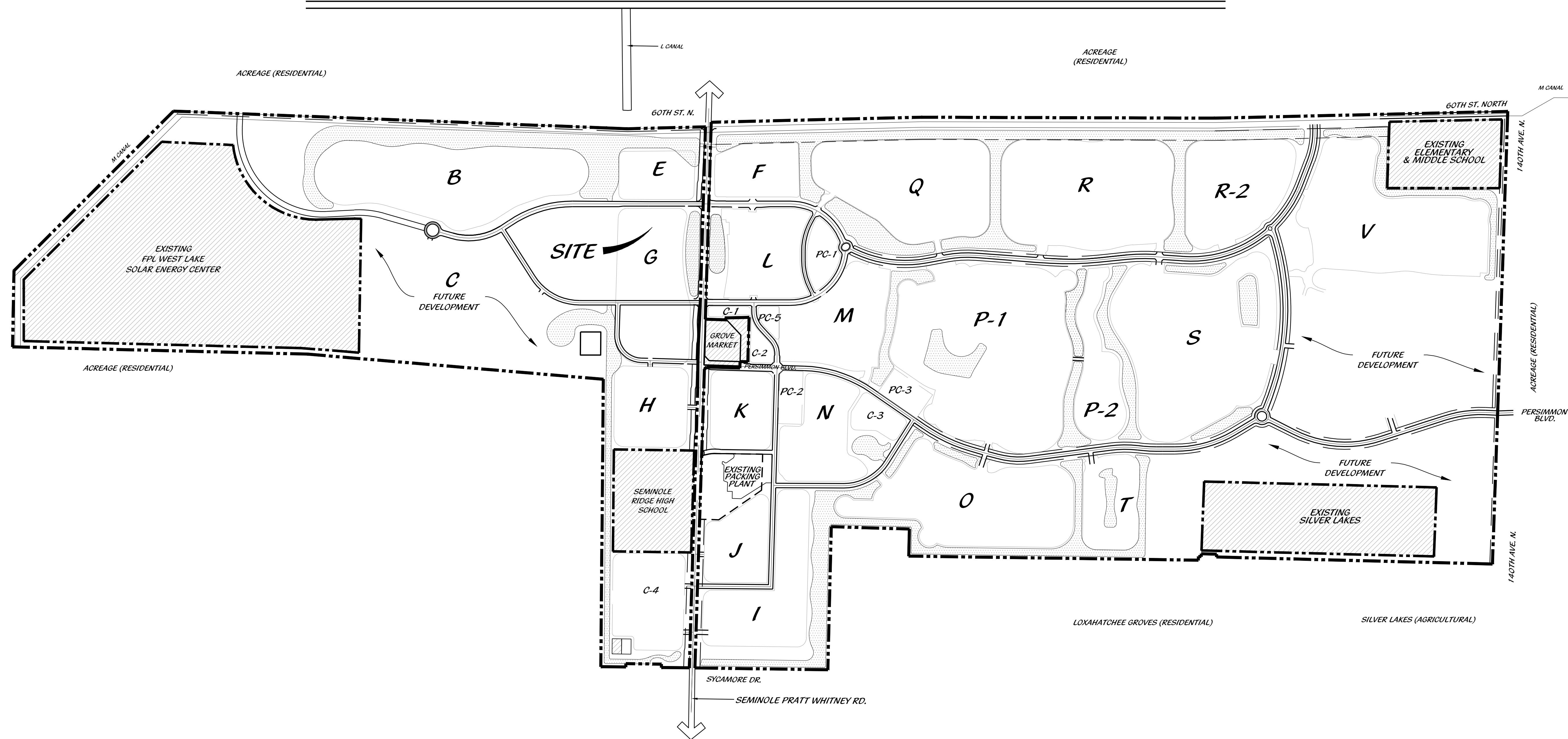


# Health Club at Westlake Plaza



## PROJECT TEAM

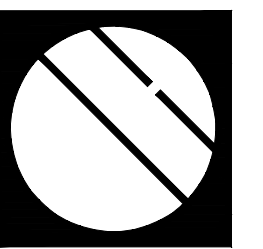
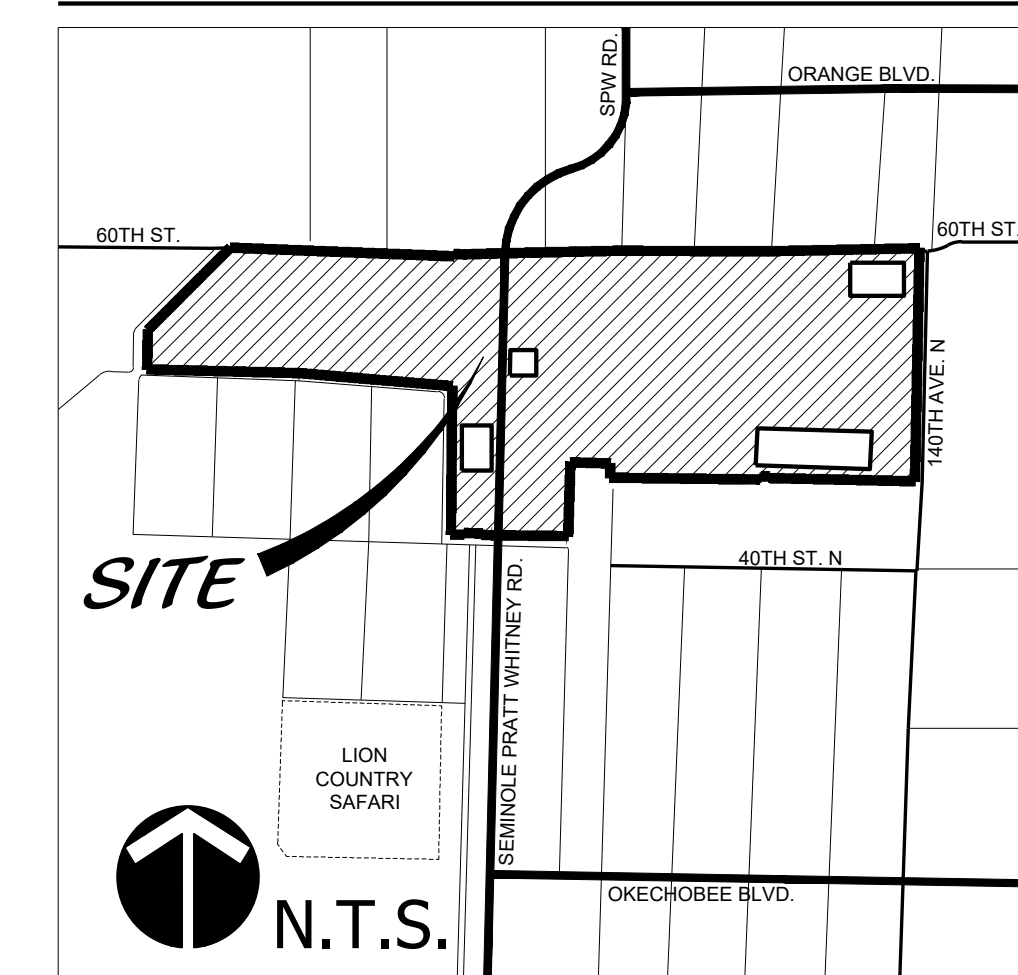
<b>PROPERTY OWNER</b> PUBLIX SUPER MARKETS, INC. LAKELAND, FLORIDA 33802	<b>SURVEYOR</b> CAULFIELD & WHEELER, INC. 7900 GLADES ROAD, SUITE 100 BOCA RATON, FLORIDA 33434 PHONE: 561-392-1991 FAX: 561-750-1452
<b>SITE PLANNER</b> COTLEUR & HEARING 1934 COMMERCE LANE, SUITE 1 JUPITER, FLORIDA 33458 PHONE: 561-747-6336 FAX: 561-747-1377	<b>TRAFFIC ENGINEER</b> PINDER TROUTMAN CONSULTING, INC. 2005 VISTA PARKWAY, SUITE 111 WEST PALM BEACH, FLORIDA PHONE: 561-236-9038 FAX: 561-684-6336
<b>CIVIL ENGINEER</b> SIMMONS & WHITE 2581 METROCENTRE BLVD, SUITE 3 WEST PALM BEACH, FLORIDA 33407 PHONE: 561-478-7848	<b>ENVIRONMENTAL CONSULTANT</b> EW CONSULTANTS, INC. 1000 SE MONTEREY COMMONS BLVD, SUITE 208 STUART, FLORIDA 34996 PHONE: 772-287-8771 MOBILE: 772-485-1700
<b>SEMINOLE IMPROVEMENT DISTRICT ENGINEER</b> CAULFIELD & WHEELER 7900 GLADES ROAD, SUITE 100 BOCA RATON, FLORIDA 33434 PHONE: 561-392-1991	<b>DEVELOPER</b> WINDCREST DEVELOPMENT GROUP, INC. 605 E. ROBINSON STREET, SUITE 340 ORLANDO, FLORIDA 32801 OFFICE: 407-219-3540 EXT. 3 FAX: 407-219-3541

## TABLE OF CONTENTS

Cover Page	LP1
Landscape Plan	LP2 to LP3
Plant List, Landscape Data and Details	LP4

48 HOURS BEFORE DIGGING  
CALL TOLL FREE  
**811**  
SUNSHINE STATE ONE CALL  
OF FLORIDA, INC.

## LOCATION MAP



**Cotleur & Hearing**

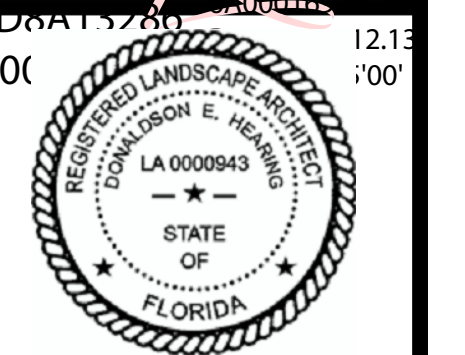
Landscape Architects  
Land Planners  
Environmental Consultants  
1934 Commerce Lane  
Suite 1  
Jupiter, Florida 33458  
561.747.6336 · Fax 747.1377  
www.cotleurhearing.com  
Lic# LC-C000239

## PUBLIX AT WESTLAKE PLAZA

### PHASE II - HEALTH CLUB LANDSCAPE PLAN

City of Westlake, Florida

Donaldson E Digitally signed  
Hearing: A01 by Donaldson E  
0980000001 Hearing: A01098  
0000015D8A133  
000015780

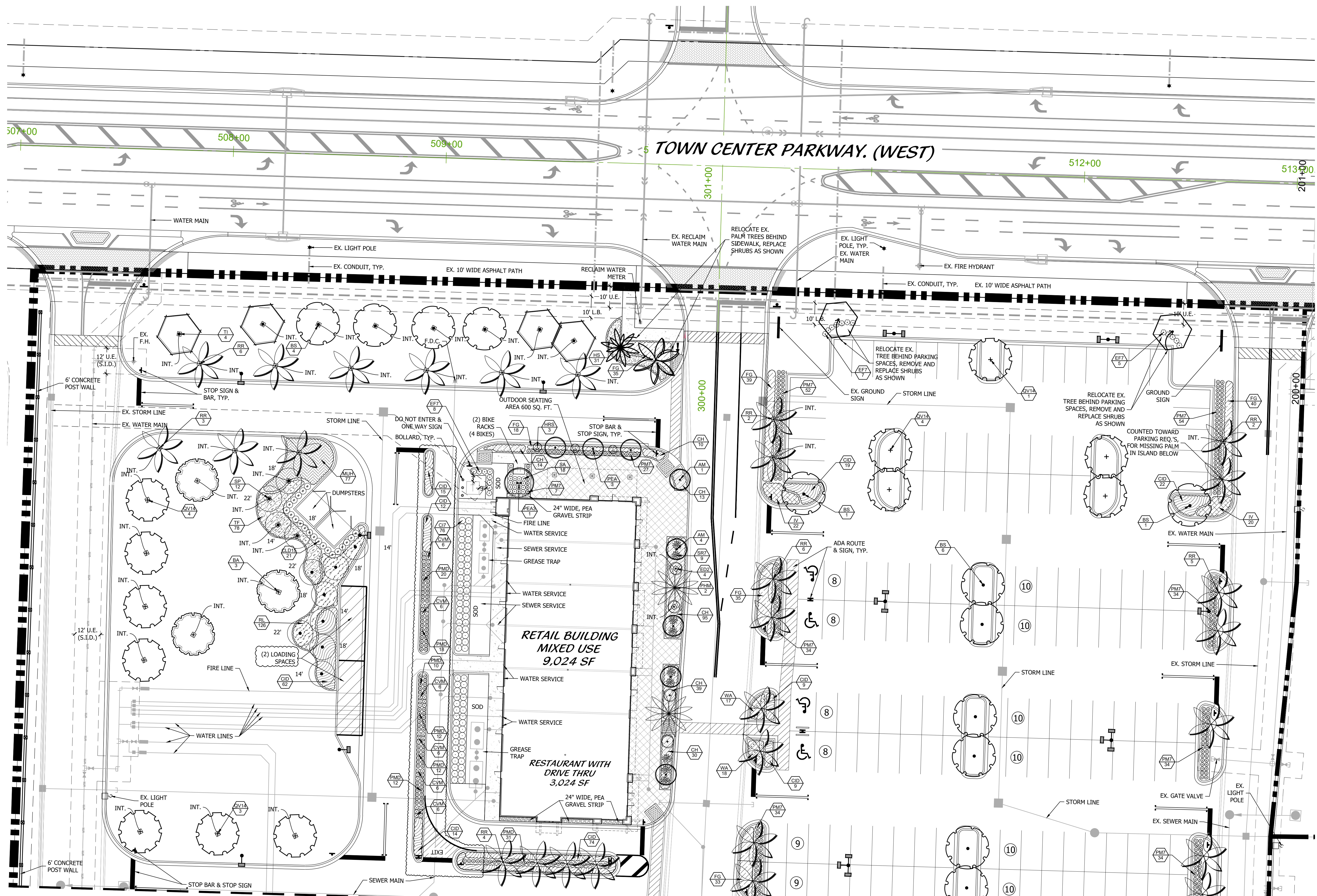


DESIGNED	DEH
DRAWN	MCR
APPROVED	DEH
JOB NUMBER	20-0616.01
DATE	10-25-23
REVISIONS	12-01-23 (12-12-23)

December 12, 2023 1:44:11 p.m.  
Drawing: 20-0616.01 LP.DWG

SHEET **LP1** OF **4**

© COTLEUR & HEARING, INC.  
These drawings are the property of the architect and are not to be used for revisions or on other projects without the written consent of the architect. A limited license is granted to a governmental entity who has jurisdiction for the sole purpose of fulfilling its public record requirements under Florida law.



**LEGEND**

- EX. EXISTING
- F.D.C. FIRE DEPARTMENT CONNECTION
- F.H. FIRE HYDRANT
- INT. INTERIOR LANDSCAPE TREES AND PALMS
- TYP. TYPICAL

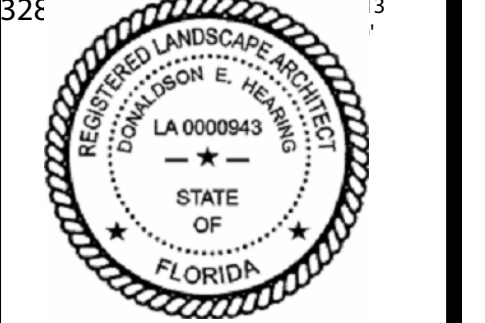
48 HOURS BEFORE DIGGING  
CALL TOLL FREE  
**811**  
SUNSHINE STATE ONE CALL  
OF FLORIDA, INC.

MATCHLINE - SHEET LP3

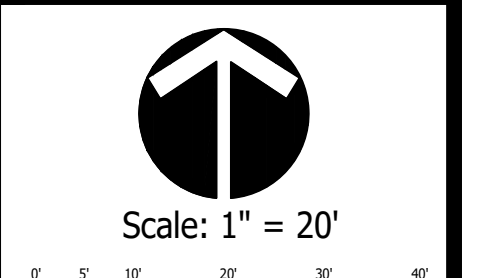
**Cotleur & Hearing**  
Landscape Architects  
Land Planners  
Environmental Consultants  
1934 Commerce Lane  
Suite 1  
Jupiter, Florida 33458  
561.747.6336 · Fax 747.1377  
www.cotleurhearing.com  
Lic# LC-C000239

**PUBLIX AT WESTLAKE PLAZA**  
PHASE II - HEALTH CLUB LANDSCAPE PLAN  
City of Westlake, Florida

Donaldson E. Hearing  
Digitally signed by Donaldson E. Hearing  
Hearing: A01098  
015288132865000162



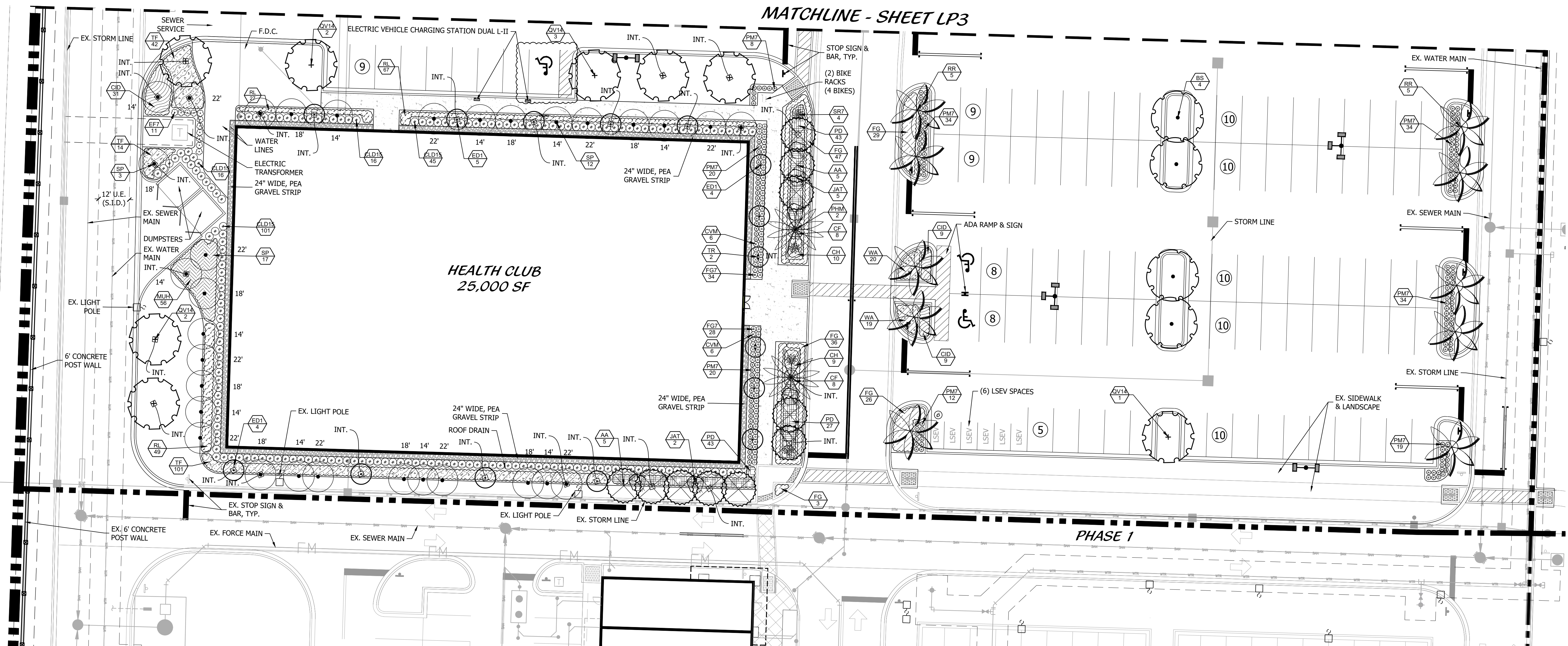
DESIGNED	DEH
DRAWN	MCR
APPROVED	DEH
JOB NUMBER	20-0616.01
DATE	10-25-23
REVISIONS	12-01-23 (12-12-23)



December 12, 2023 1:44:1 p.m.  
Drawing: 20-0616.01 LP.DWG

SHEET **LP2** OF **4**

© COTLEUR & HEARING, INC.  
These drawings are the property of the architect and are not to be used for revisions or on other projects without the written consent of the architect. A limited liability is granted to a governmental entity who has jurisdiction for the use of public funds in accordance with the Florida Public Access to Records Act.



MATCHLINE - SHEET LP3

HEALTH CLUB  
25,000 SF

PHASE 1

**LEGEND**

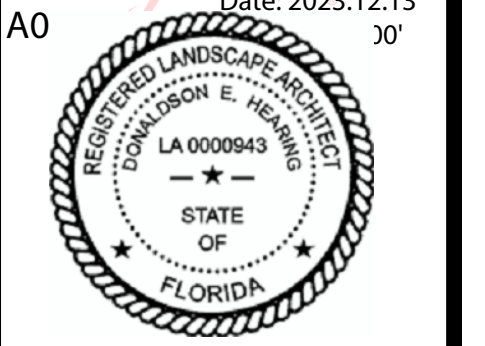
- EX. EXISTING
- F.D.C. FIRE DEPARTMENT CONNECTION
- F.H. FIRE HYDRANT
- INT. INTERIOR LANDSCAPE TREES AND PALMS
- TYP. TYPICAL

48 HOURS BEFORE DIGGING  
CALL TOLL FREE  
**811**  
SUNSHINE STATE ONE CALL  
OF FLORIDA, INC.

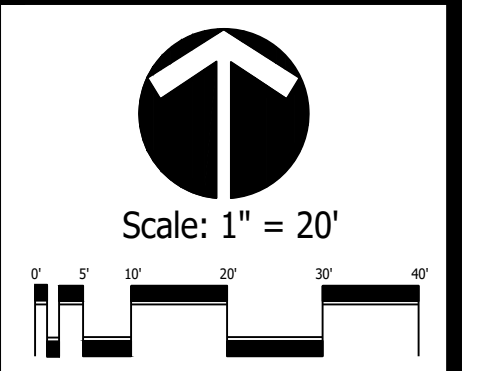
**Cotleur & Hearing**  
Landscape Architects  
Land Planners  
Environmental Consultants  
1934 Commerce Lane  
Suite 1  
Jupiter, Florida 33458  
561.747.6336 · Fax 747.1377  
www.cotleurhearing.com  
Lic# LC-C000239

**PUBLIX AT WESTLAKE PLAZA**  
PHASE II - HEALTH CLUB LANDSCAPE PLAN  
City of Westlake, Florida

Donaldson E Digitally signed  
Hearing:A01 Hearing:A01098  
0980000001 00000015D8A13  
SD8A13286 286A00016979



DESIGNED	DEH
DRAWN	MCR
APPROVED	DEH
JOB NUMBER	20-0616.01
DATE	10-25-23
REVISIONS	12-01-23 (12-12-23)



December 12, 2023 1:44:1 p.m.  
Drawing: 20-0616.01 LP.DWG

SHEET **LP3** OF **4**

© COTLEUR & HEARING, INC.  
These drawings are the property of the architect and are not to be used for revisions or on other projects without the prior written consent of the architect. A limited license is granted to a governmental entity who has jurisdiction for the sole purpose of fulfilling its public record requirements under Florida law.

# LANDSCAPE SPECIFICATIONS

## 1. GENERAL LANDSCAPE REQUIREMENTS

LANDSCAPE CONTRACT WORK INCLUDES, BUT IS NOT LIMITED TO, SOIL PREPARATION, FINE OR FINISH GRADING, AND INSTALLING PLANT MATERIAL, WATERING, STAKING, GUYING AND MULCHING.

### PLANT SIZE AND QUALITY

TREES, PALMS, SHRUBS, GROUNDCOVERS:  
PLANT SPECIES AND SIZES SHALL CONFORM TO THOSE INDICATED ON THE DRAWINGS. NOMENCLATURE SHALL CONFORM TO STANDARD PLANT NAMES, 1942 EDITION. ALL NURSERY STOCK SHALL BE IN ACCORDANCE WITH GRADES AND STANDARDS FOR NURSERY PLANTS PART 1 (1) LATEST EDITION PUBLISHED BY THE FLORIDA DEPARTMENT OF AGRICULTURE AND CONSUMER SERVICES, UNLESS SPECIFIED OTHERWISE. ALL PLANTS SHALL BE FLORIDA GRADE NUMBER 1 OR BETTER AS DETERMINED BY THE FLORIDA DIVISION OF PLANT INDUSTRY. TIGHTLY KNIT PLANT; SO TRAINED OR FAVORED IN ITS DEVELOPMENT THAT FIRST APPEARANCE IS UNQUESTIONABLE AND IT IS OUTSTANDINGLY SUPERIOR IN FORM, NUMBER OF BRANCHES, COMPACTNESS AND SYMMETRY. ALL PLANTS SHALL BE FRESHLY DUG, SOUND, HEALTHY, VIGOROUS, WELL BRANCHED AND FREE OF DISEASE, INSECT EGGS AND LARVAE AND SHALL HAVE ADEQUATE ROOT SYSTEMS. TREES AND PALMS FOR PLANTING ROWS SHALL BE UNIFORM IN SIZE AND SHAPE. ALL MATERIALS SHALL BE SUBJECT TO APPROVAL BY THE LANDSCAPE ARCHITECT. THE PLANTS FURNISHED SHALL BE NORMAL FOR THE VARIETY AND FLORIDA NUMBER 1.

ALL CONTAINER GROWN MATERIAL SHALL BE HEALTHY, VIGOROUS, WELL ROOTED PLANTS AND ESTABLISHED IN THE CONTAINER IN WHICH THEY ARE SOLD. THE PLANTS SHALL HAVE TOPS OF GOOD QUALITY AND BE IN A HEALTHY GROWING CONDITION.

AN ESTABLISHED CONTAINER GROWN PLANT SHALL BE TRANSPLANTED INTO A CONTAINER AND GROWN IN THAT CONTAINER SUFFICIENTLY LONG ENOUGH FOR THE NEW FIBER ROOTS TO BE AT LEAST #1 CONDITION. PLANTS WILL RETAIN ITS SHAPE AND HOLD TOGETHER WHEN REMOVED FROM THE CONTAINER.

STANDARD PLANTING MIXTURE SHALL BE AS PER THE SDM SOIL NOTES, THIS PAGE.

REPLACEMENT SOIL SHALL BE USED AS SPECIFIED TO REPLACE EXISTING SOILS THAT ARE DETERMINED BY THE LANDSCAPE ARCHITECT TO BE UNSUITABLE FOR PLANTING. IE, ROAD BASE, PAVEMENT, ETC. REFER TO THE SDM SOIL NOTES, THIS PAGE, FOR PLANTING SOIL MIX SPECIFICATIONS.

MULCH SHALL BE COCO BROWN DYED & GRADE MULCH. ALL MULCH IS TO BE APPLIED TO A DEPTH OF 3", EXCEPT AS WITHIN 6" OF PLANT STEMS.  
FERTILIZER IN BACKFILL MIXTURE FOR ALL PLANTS SHALL CONSIST OF MORGANITE ACTIVATED SLUDGE MIXED WITH THE BACKFILL AT A RATE OF NOT LESS THAN 50 LBS. PER CUBIC YARD.

FERTILIZER FOR TREES AND SHRUBS SHALL UTILIZE AN 8-2-12+4 ANALYSIS, PLUS MICRO NUTRIENTS, 100 PPM BORON, 100 PPM ZINC, 100 PPM MANGANESE, (MG) MAGNESIUM, AND (B) BORON MUST BE IN CONTROLLED RELEASE FORM. THE (Mn) MANGANESE AND (Fe) IRON SOURCES MUST BE WATER SOLUBLE SULFATE OR CHELATED FORM.

FERTILIZER WILL BE APPLIED PER THE MANUFACTURERS RECOMMENDATIONS.

"FLORIDA EAST COAST PALM SPECIAL" SHALL BE APPLIED TO ALL PALMS AT THE RATE RECOMMENDED BY THE MANUFACTURER.

FIELD GROWN TREES AND PALMS PREVIOUSLY ROOT PRUNED SHALL OBTAIN A ROOT BALL WITH SUFFICIENT ROOTS FOR CONTINUED GROWTH WITHOUT RESULTING SHOCK.

CONTRACTOR SHALL NOT MARK OR SCAR TRUNK IN ANY FASHION.

PLANTS SHALL BE WATERED AS NECESSARY OR WITHIN 24 HOURS AFTER NOTIFICATION BY THE LANDSCAPE ARCHITECT.

THE LOCATIONS OF PLANTS, AS SHOWN IN THESE PLANS, ARE APPROXIMATE. THE FINAL LOCATIONS MAY BE ADJUSTED TO ACCOMMODATE UNFORESEEN FIELD CONDITIONS. WATERING SCHEDULE AND THE LAYOUT ARE TO BE APPROVED BY THE LANDSCAPE ARCHITECT.

ALL PLASTIC FABRIC SHALL BE REMOVED FROM PLANT MATERIAL AT TIME OF INSTALLATION.  
ALL TREES MUST BE STAKED AS SHOWN ON THE PLANTING DETAILS WITHIN 24 HOURS OF PLANTING. STAKES TO REMAIN FOR A MINIMUM OF 9 MONTHS, BUT NO LONGER THAN 18 MONTHS. CONTRACTOR IS RESPONSIBLE FOR MAINTENANCE AND REMOVAL OF THE STAKES.

ALL TREES MUST BE PRUNED AS PER LANDSCAPE ARCHITECT'S DIRECTION. SABAL PALMS MAY BE HUICCAED CUT.

ALL SHRUBS, TREES AND GROUND COVER WILL HAVE IMPROVED SOIL AS PER PLANTING SOIL NOTES. THE SOILS SHALL BE PLACED IN THE HOLE DURING PLANTING. TOP DRESSING ONLY IS NOT ACCEPTABLE.

DO NOT ALLOW AIR POCKETS TO FORM WHEN BACKFILLING. ALL TREES SHALL BE SPIKED IN UTILIZING WATER AND A TREE BAR.

THE LANDSCAPE CONTRACTOR SHALL WATER, MULCH, WEED, PRUNE, AND OTHERWISE MAINTAIN ALL PLANTS, INCLUDING SOD, UNTIL COMPLETION OF CONTRACT OR ACCEPTANCE BY LANDSCAPE ARCHITECT. SETTLED PLANTS SHALL BE RESET TO PROPER GRADE, PLANTING SAUCERS RESTORED, AND DEFECTIVE WORK CORRECTED.

THE LANDSCAPE CONTRACTOR SHALL AT ALL TIMES KEEP THE PREMISES FREE FROM ACCUMULATION OF WASTE MATERIAL OR DEBRIS CAUSED BY HIS CREWS DURING THE PERFORMANCE OF THE WORK. UPON COMPLETION OF THE WORK, THE CONTRACTOR SHALL PROMPTLY REMOVE ALL WASTE MATERIALS, UNUSED PLANT MATERIAL, EMPTY PLANT CONTAINERS AND ALL EQUIPMENT FROM THE PROJECT SITE.

UPON COMPLETION OF THE WORK, THE LANDSCAPE CONTRACTOR SHALL NOTIFY THE LANDSCAPE ARCHITECT AND REQUEST A FINAL INSPECTION. ANY ITEMS THAT ARE JUDGED INCOMPLETE OR UNACCEPTABLE BY THE LANDSCAPE ARCHITECT OR OWNER'S REPRESENTATIVE SHALL BE CORRECTED BY THE LANDSCAPE CONTRACTOR WITHIN 14 DAYS.

ALL LABOR AND MATERIAL FOR SOIL AMENDMENTS AND FERTILIZER THAT IS REQUIRED TO INSURE THE SUCCESSFUL ESTABLISHMENT AND SURVIVAL OF THE PROPOSED VEGETATION, AS WELL AS ALL THE COST FOR THE REMOVAL OF UNSUITABLE OR EXCESS BACKFILL MATERIAL, SHALL BE INCLUDED IN THE CONTRACTOR'S BID TO PERFORM THE WORK REPRESENTED IN THIS PLAN SET.

## 2. PLANTING TREES

EXCAVATE PIT AS PER PLANTING DETAILS.

BACKFILL AROUND BALL WITH PLANTING SOIL MIX AS PER THE SDM SOIL NOTES, THIS PAGE, AND SLIGHTLY CONCAVE WATER THOROUGHLY AS LAYERS ARE PLACED TO ELIMINATE VOIDS AND AIR POCKETS. BUILD A 6" HIGH BERM OF THE PLANTING SOIL MIX BEYOND EDGE OF EXCAVATION. APPLY 3" (AFTER SETTLEMENT) OF MULCH EXCEPT WITHIN 6" OF STEMS.

PRUNE TREE TO REMOVE DAMAGED BRANCHES ONLY. DO NOT REMOVE MORE THAN 15% OF BRANCHES. DO NOT PRUNE BACK TERMINAL LEADER.  
GUY AND STAKE TREE IN ACCORDANCE WITH THE STAKING DETAILS IMMEDIATELY AFTER PLANTING.

## 3. PLANTING SHRUBS

LAYOUT SHRUBS TO CREATE A CONTINUOUS SMOOTH FRONT LINE AND FILL IN BEHIND.  
EXCAVATE PIT OR TRENCH TO 1-1/2 TIMES THE DIAMETER OF THE BALLS OR CONTAINERS OR 1'-0" WIDER THAN THE SPREAD OF ROOTS FOR POSITIONING AT PROPER HEIGHT. BACKFILL AROUND PLANTS WITH PLANTING SOIL MIX PER THE SDM SOIL NOTES, THIS PAGE, COMPACTED TO ELIMINATE VOIDS AND AIR POCKETS. FORM GRADE SLIGHTLY DISHD AND BEMED AT EDGES OF EXCAVATION. APPLY 3" OF MULCH EXCEPT WITHIN 6" OF STEMS.

## 4. PLANTING GROUND COVER

SPACE SUBGRADE TO DEPTH OF 4" IN AREAS WHERE TOPSOIL HAS BEEN STRIPPED AND SPREAD SMOOTH.  
SPACE PLANTS AS OTHERWISE INDICATED. DIG HOLES LARGE ENOUGH TO ALLOW SPREADING OF ROOTS. COMPACT BACKFILL TO ELIMINATE VOIDS AND LEAVE GRADE SLIGHTLY DISHD AT EACH PLANT. WATER THOROUGHLY. APPLY 3" OF MULCH OVER ENTIRE PLANTING BED, LIFTING PLANT FOLIAGE ABOVE MULCH.

DURING PERIODS OF HOT SUN AND/OR WIND AT TIME OF PLANTING, PROVIDE PROTECTIVE COVER FOR SEVERAL DAYS OR AS NEEDED.

## 5. PLANTING LAWNS

SODDING: SOD TYPE SPECIFIED ON PLANT LIST SHALL BE MACHINE STRIPPED NOT MORE THAN 24 HOURS PRIOR TO LAYING.  
LOOSEN SUBGRADE TO DEPTH OF 4" AND GRADE WITH TOPSOIL EITHER PROVIDED ON SITE OR IMPORTED STANDARD PLANTING MIX TO FINISH DESIGN ELEVATIONS. ROLL PREPARED LAWN SURFACE. WATER THOROUGHLY, BUT DO NOT CREATE MUDDY SOIL CONDITION.

FERTILIZE SOIL AT THE RATE OF APPROXIMATELY 10 LBS. PER 1,000 S.F. SPREAD FERTILIZER OVER THE AREA TO BE SEEDING GRASS BY USING AN APPROVED DISTRIBUTION DEVICE CALIBRATED TO DISTRIBUTE THE FERTILIZER AT THE RATE SPECIFIED ON THE PRODUCT LABEL. APPLY FERTILIZER TO EXCEEDS 15 M.P.H. THOROUGHLY MIX FERTILIZER INTO THE TOP 2" OF TOPSOIL.

LAY SOD STRIPS WITH TIGHT JOINTS; DO NOT OVERLAP. STAGGER STRIPS TO OFFSET JOINTS IN ADJACENT COURSES. WORK SITED PLANTING SOIL MIX AS PER THE SDM SOIL NOTES, THIS PAGE, INTO JOINTS BETWEEN PIECES OF SOD AND REMOVE EXCESS SOD FROM SODDED AREAS. SOD ON SLOPES GREATER THAN 3:1 SHALL BE STAKED IN PLACE. ROLL OR STAMP LIGHTLY AND WATER THOROUGHLY WITH A FINE SPRAY IMMEDIATELY AFTER PLANTING.

## 6. MISCELLANEOUS LANDSCAPE WORK

### LANDSCAPE MAINTENANCE

MAINTAIN LANDSCAPE WORK UNTIL FINAL ACCEPTANCE IS ISSUED BY THE OWNER'S REPRESENTATIVE. INCLUDE WEEDING, TRIMMING, PRUNING, CRUSTICATION OF GRASS, MOWING AND TRIMMING GRASS, PRUNING TREES AND SHRUBS, PROTECTION FROM INSECTS AND DISEASES, FERTILIZING AND SIMILAR OPERATIONS AS NEEDED TO INSURE NORMAL GROWTH AND GOOD HEALTH FOR LIVE PLANT MATERIAL.

### PLANT MATERIAL SUBSTITUTION

NO SUBSTITUTION OF PLANT MATERIAL, TYPE OR SIZES WILL BE PERMITTED WITHOUT AUTHORIZATION FROM THE LANDSCAPE ARCHITECT.

### PLANTING BED PREPARATION

ALL PLANTING BEDS SHALL BE PROPERLY PREPARED PRIOR TO THE COMMENCEMENT OF ANY PLANTING. PLANTING AREAS, INCLUDING LAWNS SHALL BE FREE OF ALL WEEDS AND NUISANCE VEGETATION. IF TORPEDO GRASS (PANICUM REPENS) IS PRESENT OR ENCOUNTERED DURING PLANTING, THE LANDSCAPE CONTRACTOR SHALL STOP ALL PLANTING UNTIL IT CAN BE DEMONSTRATED THAT IT HAS BEEN COMPLETELY REMOVED OR ERADICATED. THERE SHALL BE NO EXCEPTIONS TO THIS PROVISION.

ALL LANDSCAPE ISLANDS AND BEDS WILL BE FREE OF SHELL ROCK AND CONSTRUCTION DEBRIS AND WILL BE EXCAVATED TO A DEPTH OF 30 INCHES OR TO CLEAN, NATIVE SOIL AND FILLED WITH THE PLANTING SOIL MIX AS PER THE SDM SOIL NOTES, THIS PAGE.

### LANDSCAPE WARRANTY

THE LANDSCAPE CONTRACTOR SHALL GUARANTEE ALL PLANT MATERIAL FOR A PERIOD OF TWELVE (12) MONTHS FROM THE DATE OF CONDITIONAL ACCEPTANCE IN WRITING FROM THE LANDSCAPE ARCHITECT. AT THE TIME OF CONDITIONAL ACCEPTANCE, THE TWELVE (12) MONTH PERIOD SHALL COMMENCE. ANY MATERIALS WHICH HAVE DIED OR DECLINED TO THE POINT WHERE NO LONGER MEET THE #1 CONDITION DURING THIS PERIOD SHALL BE PROMPTLY REPLACED WITH SPECIMENS THAT MEET THE MINIMUM REQUIREMENTS AS SHOWN ON THE DRAWINGS. THE LANDSCAPE CONTRACTOR SHALL NOT BE HELD RESPONSIBLE FOR THE DEATH OR DAMAGE RESULTING FROM ACTS OF GOD SUCH AS LIGHTNING, VANDALISM, AND AUTOMOBILES FROM NEGLIGENCE BY THE OWNER. CONTRACTOR SHALL BE RESPONSIBLE FOR WATERING AND OTHERWISE MAINTAINING PLANTS UP TO THE FINAL ACCEPTANCE. UNLESS A WRITTEN AGREEMENT WITH THE LANDSCAPE ARCHITECT PROVIDES FOR A DIFFERENT ARRANGEMENT.

### IRRIGATION

ALL LANDSCAPED AREAS (INCLUDING SOD AREAS) SHALL BE IRRIGATED WITH AN UNDERGROUND AUTOMATIC SPRINKLER SYSTEM PROVIDING 100 PERCENT COVERAGE. LANDSCAPE INSTALLATION SHALL NOT OCCUR UNTIL THE IRRIGATION SYSTEM IS OPERATIONAL. UNLESS THE OWNER, THE OWNER'S REPRESENTATIVE, OR THE PROJECT LANDSCAPE ARCHITECT GRANTS APPROVAL.

## GENERAL LANDSCAPE NOTES

ALL LANDSCAPING AND ABOVE GROUND STRUCTURES SHOWN HEREON ARE DESIGNED AND ARE TO BE INSTALLED AND MAINTAINED IN ACCORDANCE WITH SEMINOLE IMPROVEMENT DISTRICT (S.I.D.) STREETScape STANDARDS.

ALL PROPOSED PLANT MATERIAL SHALL BE FLORIDA NUMBER 1 OR BETTER AS DESCRIBED IN GRADES AND STANDARDS FOR NURSERY PLANTS, PART 1 AND LATEST EDITION PUBLISHED BY THE FLORIDA DEPARTMENT OF AGRICULTURE AND CONSUMER SERVICE.

ALL PLANTED AREAS SHALL RECEIVE A 3" LAYER OF MULCH.  
ALL PLANT MATERIAL SHALL BE PRUNED, IF NEEDED, TO ACHIEVE THE SHAPE AND FORM CHARACTERISTIC TO THEIR DESIGN INTENT. PRUNING TO BE IN STRICT ACCORDANCE WITH ISA STANDARDS.

ALL SOD OR SEED SHALL BE CERTIFIED (IF APPLICABLE) AND WEED AND INSECT FREE.

VEGETATION REMOVAL PERMITS ARE REQUIRED PRIOR TO REMOVING, CLEARING OR TRIMMING ANY VEGETATION FROM THE PROPERTY.

AT THE TIME OF BUILDING PERMIT, THE APPLICANT SHALL EXECUTE HOLD HARMLESS AGREEMENTS WITH ALL APPLICABLE UTILITIES FOR LANDSCAPING WITHIN UTILITY EASEMENTS.

THE LANDSCAPE CONTRACTOR SHALL NOT MAKE ANY SUBSTITUTIONS OR CHANGES WITHOUT THE AUTHORIZATION OF S.I.D., THE OWNER, AND THE LANDSCAPE ARCHITECT.

THE LANDSCAPE CONTRACTOR SHALL REVIEW THE PROJECT DRAINAGE AND UTILITY PLANS PRIOR TO CONSTRUCTION AND AVOID ALL CONFLICTS. THE LANDSCAPE CONTRACTOR SHALL VERIFY THE LOCATION OF ALL UNDERGROUND UTILITIES PRIOR TO COMMENCING WORK.

CALL SUNSHINE ONE CALL SERVICE FOR UNDERGROUND UTILITY LOCATIONS 48 HOURS PRIOR TO ANY EXCAVATION OF DIGGING 1-800-432-4470.

THE LANDSCAPE CONTRACTOR SHALL BE RESPONSIBLE FOR ALL PERMITS REQUIRED TO PERFORM LANDSCAPE WORK.

THE CONTRACTOR SHALL COORDINATE THE PLANTING AND TRIMMING OF STREET TREES TO ENSURE FULL VISIBILITY TO TRAFFIC CONTROL AND SAFETY SIGNAGE.

TREES SHALL BE POSITIONED TO AVOID CONFLICTS WITH SIGNAGE AND SITE LIGHTING. LARGER TREES WILL BE PLACED AT INTERSECTIONS WHERE DEEMED NECESSARY BY S.I.D. DESIGN REQUIREMENTS.

ANY PLANT MATERIAL PLANTED WITHIN SAFE SIGHT DISTANCE TRIANGLES SHALL BE MAINTAINED IN A WAY THAT PROVIDES UNOBSTRUCTED VISIBILITY AT A LEVEL BETWEEN 30" AND 8' ABOVE THE PAVEMENT SURFACE OF THE ADJACENT ROADWAY.

VEGETATION LOCATED WITHIN SAFE SIGHT DISTANCE TRIANGLE AREAS SHALL BE TRIMMED SO THAT NO CANOPY LIMBS OR FOLIAGE EXTEND INTO REQUIRED VISIBILITY AREA.

ALL ABOVE GROUND UTILITIES I.E. TRANSFORMERS, SWITCH BOXES, AC CONDENSERS AND ALIKE SHALL BE FULLY SCREENED FROM VIEW ON THREE SIDES WITH LANDSCAPING. THE LANDSCAPING SHALL TO THE TALLEST POINT OF SAID EQUIPMENT AT TIME OF PLANTING.

LOCAL UTILITY AND FIRE RESCUE CLEARANCE ZONES SHALL BE PROVIDE AROUND ALL ABOVE GROUND OR AT GRADE METERS AND EQUIPMENT.

ALL TREES SHALL BE LOCATED WITHIN A MULCH PLANTING BED WITH A MINIMUM OF TWO (2) FEET OF CLEARANCE TO THE EDGE OF THE BED.

ALL SOD SHALL BE STENOTAPHRUM SECONDATUM FLORITAM-PALMETTO (ST. AUGUSTINE SOD) UNLESS OTHERWISE NOTED ON PLANS.

TYPE D, E OR F RAISED CONCRETE CURBING SHALL BE PROVIDED AROUND ALL PLANTING ISLANDS WITHIN VEHICULAR USE AREAS.

ALL TREES PLANTED UNDER OR ADJACENT TO FPL POWER LINES WILL COMPLY WITH THE FPL RIGHT TREE IN THE RIGHT PLACE GUIDELINES (REV 5/85)

TREES AND PALMS SHALL BE STAKED/GUYED IN ACCORDANCE WITH THE SPECIFICATIONS AND PLANTING DETAILS.

STREET TREE LOCATIONS SHALL BE COORDINATED WITH DRIVEWAYS, STREET LIGHTS, UTILITIES AND FIRE HYDRANTS.

THE IRRIGATION SYSTEM SHALL BE DESIGNED TO PROVIDE 100% OVERLAP COVERAGE TO ALL LANDSCAPE AND SOD AREAS.

THE IRRIGATION SYSTEM SHALL BE EQUIPPED WITH A RAIN SENSOR/CUT OFF SWITCH IN ACCORDANCE WITH STATE AND LOCAL REQUIREMENTS.

ALL LANDSCAPE ISLANDS SHALL INCORPORATE THE INSTALLATION OF MOUNDING OF NATIVE SOILS A MINIMUM OF SIX INCHES (6") ABOVE THE TOP OF CURB.

ROYAL PALM TREES WITHIN THE ROW SHALL BE REGULARLY MAINTAINED AND TRIMMED SO FRONDS DO NOT FALL ONTO ROADWAYS.

ALL LANDSCAPE ISLANDS AND MEDIANS SHALL BE EXCAVATED TO A DEPTH OF 30" MINIMUM AND BACKFILLED WITH THE PLANTING SOIL MIX AS SDM SOIL NOTES, THIS PAGE.  
CLEARANCE BETWEEN LANDSCAPE AND UTILITIES WILL BE REVIEWED BY SEMINOLE IMPROVEMENT DISTRICT.

REFER TO THE SDM SOIL NOTES, THIS PAGE, FOR STANDARD PLANTING SOIL MIX SPECIFICATIONS.  
MAINTAIN A 12" MIN. PLANT MATERIAL SETBACK FROM CURBS ADJACENT TO ALL VEHICULAR AND PEDESTRIAN AREAS.

## ROOT BARRIER NOTES

TREES SHOWN ON THIS PLAN ARE FOR GRAPHIC REPRESENTATION ONLY. TREE SPACING IS BASED ON SEMINOLE IMPROVEMENT DISTRICT (S.I.D.) STREETScape STANDARDS AND THE TREES SHOWN ON THESE PLANS ATTEMPT TO ACCOMPLISH THAT SPACING WHILE MAINTAINING THE REQUIRED SETBACKS FROM S.I.D. UTILITIES. TREES MAY BE FIELD ADJUSTED TO AVOID CONFLICTS WITH DRIVEWAYS AND UNDERGROUND UTILITIES. IN ANY CASE THE TREES SHALL BE LOCATED IN THE FIELD IN ACCORDANCE WITH THE PLANTING DETAILS SHOWN HEREIN.

ADDITIONALLY, LARGE TREES OR PALMS ARE TO BE INSTALLED WITH A TEN FOOT (10') SEPARATION FROM ANY WATER OR SEWER MAIN AND/OR SERVICE, HYDRANTS AND LIFT STATIONS. IF A TEN FOOT (10') SEPARATION CANNOT BE ACHIEVED, THE TREE SHALL BE INSTALLED WITH A ROOT BARRIER SYSTEM. REFER TO THE "ROOT BARRIER" DETAIL FOR INSTALLATION REQUIREMENTS. HOWEVER, IN NO CASE SHALL TREE ENCKROACH INTO A SID WALK UNLESS PRIOR S.I.D. APPROVAL AND ONLY SOD CAN BE INSTALLED WITHIN 7.5' OF A FIRE HYDRANT UNLESS OTHERWISE APPROVED BY THE FIRE MARSHALL.

ALL LANDSCAPING AND ABOVE GROUND STRUCTURE SHOWN HEREIN ARE DESIGNED AND ARE TO BE INSTALLED AND MAINTAINED IN ACCORDANCE WITH SEMINOLE IMPROVEMENT DISTRICT STANDARDS.

ROYAL PALM TREES PLANTED WITHIN RIGHT OF WAYS SHALL BE REGULARLY MAINTAINED SO THAT FRONDS DO NOT FALL INTO THE RIGHT OF WAY.

TREES SHALL HAVE A MINIMUM TWO FOOT SEPARATION FROM BIKE PATHS AND SIDEWALKS.

# OVERALL PLANT LIST

ACCENT PALMS	QTY	BOTANICAL NAME	COMMON NAME	CONT	CAL	SIZE	NATIVE	REMARKS
TR	2	THRINAX RADICATA	FLORIDA THATCH PALM	25 GAL.	---	6" O.A.	Y	FULL CANOPY, DOUBLE
ACCENT TREES	QTY	BOTANICAL NAME	COMMON NAME	CONT	CAL	SIZE	NATIVE	REMARKS
HRS	3	HIBISCUS ROSA-SINENSIS 'SEMINOLE PINK'	SEMINOLE PINK HIBISCUS	15 GAL.	---	5" O.A.	Y	FULL CANOPY, STANDARD, MATCHED
JAT	7	JATROPHA INTERGERIMA	JATROPHA TREE	25 GAL.	---	5' HT. X 3' SPRD.	N	FULL CANOPY, MULTI-STEM, FLORIDA FANCY, LIMB UP 2"
CANOPY TREES	QTY	BOTANICAL NAME	COMMON NAME	CONT	CAL	SIZE	NATIVE	REMARKS
BA	3	BULNESIA ARBOREA	VERAWOOD	45 GAL.	2.5" CAL	12' HT X 5' SPRD	N	FULL CANOPY
BS	16	BURSERA SIMARUBA	GUMBO LIMBO	65 GAL. MIN.	3.5" CAL	16' HT. X 7' SPRD.	Y	FULL CANOPY
ED1	13	ELEAOCARPUS DECIPENS	JAPANESE BLUEBERRY TREE	45 GAL. MIN.	2.5" CAL	14' HT. X 6' SPRD.	N	FULL & THICK, SHEARED CONICAL SHAPE, FLORIDA FANCY, SINGLE STRAIGHT TRUNK. 4' CT.
QV14	20	QUEBUS VIRGINIANA	LIVE OAK	65 GAL. MIN.	4" CAL	14' MIN. X 7' SPRD.	Y	FULL CANOPY
TI	4	TABERNAEMONTANA	PINK TRUMPET TREE	45 GAL. MIN.	2.5" CAL	12' HT. X 5' SPRD.	N	FULL CANOPY
PALM TREES	QTY	BOTANICAL NAME	COMMON NAME	CONT	CAL	SIZE	NATIVE	REMARKS
AM	5	ADONIDIA MERRILLII	CHRISTMAS PALM	F.G.	---	12'-14" O.A.	N	FULL CANOPY, SINGLE TRUNK, MATCHED
AA	10	ARCHONTOPHOENIX ALEXANDRAE	KING ALEXANDER PALM	F.G.	---	20' O.A.	N	SINGLE TRUNK, FLORIDA FANCY, ROOT PRUNED, MATCHED
PEA	3	PTYCHOSPHERMA ELEGANS	ALEXANDER PALM	F.G.	---	12' - 14' O.A.	N	FULL, MATCHED
PEA3	1	PTYCHOSPHERMA ELEGANS	ALEXANDER PALM	F.G.	---	12' - 14' O.A.	N	FULL, DOUBLE
SP	44	SABAL PALMETTO	CABBAGE PALM	F.G.	---	14', 18', & 22' CT., SEE PLAN Y	Y	SLICK, STRAIGHT TRUNK
SMALL TREES	QTY	BOTANICAL NAME	COMMON NAME	CONT	CAL	SIZE	NATIVE	REMARKS
ED2	4	ELEAOCARPUS DECIPENS	JAPANESE BLUEBERRY TREE	25 GAL.	1.5" CAL	5' - 6' O.A.	N	FULL CANOPY, SHEARED CONICAL SHAPE, FLORIDA FANCY, SINGLE STRAIGHT TRUNK, MATCHED, FULL TO BASE
SPECIMEN PALMS	QTY	BOTANICAL NAME	COMMON NAME	CONT	CAL	SIZE	NATIVE	REMARKS
PHM	4	PHOENIX DACTYLIFERA 'MEDJOOL'	MEDJOOL DATE PALM	F.G.	---	14' C.T.	N	STRAIGHT TRUNK, FULL CANOPY, DIAMOND CUT. ROOT PRUNED, FLORIDA FANCY, MATCHED
RR	38	ROYSTONIA REGIA	ROYAL PALM	F.G.	---	16' G.W.	Y	HEAVY CALIPER, FLORIDA FANCY, ROOT PRUNED, FULL CANOPY, MIN. 7 LEAF COUNT
SHRUBS	QTY	BOTANICAL NAME	COMMON NAME	CONT	SIZE	SPACE	NATIVE	REMARKS
C17	76	CHRYSOBALANUS ICAGO 'RED TIP'	RED TIP COCOPALM	7 GAL	30" X 24"	3" O.C.	Y	FULL & THICK
CLD15	199	CLUSIA GUTTIFERA	CLUSIA	15 GAL	6" HT X 3' SPRD	3" O.C.	N	FULL & THICK
QV1	46	CODIARUM VARIAGTUM 'MANGO'	MANGO CROTON	3 GAL	18" X 18"	3" O.C.	N	FULL & THICK
EF7	31	EUGENIA FLETCHERII	SPRINKLE STOPPER	7 GAL	30" X 24"	2.5" O.C.	Y	FULL & THICK
FG7	62	FICUS MACROPHYLLA 'GREEN ISLAND'	GREEN ISLAND FICUS	7 GAL	15" X 15"	2" O.C.	N	FULL & THICK
PH7	491	PODOPARPUS MACROPHYLLUS 'MAKI'	PODOPARPUS	7 GAL	3" X 2"	2" O.C.	N	FULL & THICK
PND	115	PODOPARPUS MACROPHYLLUS 'DWARF PRINGLES'	DWARF PODOPARPUS	3 GAL	18" X 18"	2" O.C.	N	FULL & THICK
SA	18	SCHOFFERA ARBOREOLA 'DAZZLE'	DAZZLE SCHEFFERA	3 GAL	2" X 2"	2" O.C.	N	FULL & THICK
SR7	13	STRELTIZIA REGINAE	ORANGE BIRD OF PARADISE	7 GAL	2.5" X 2"	A.S.	N	FULL & THICK, FLORIDA FANCY
SHRUBS	QTY	BOTANICAL NAME	COMMON NAME	CONT	SIZE	SPACE	NATIVE	REMARKS
CH	220	CALLIANDRA HAEMETOCOPHALA	DWARF POWDERPUFF	3 GAL	18" X 18"	24" O.C.	Y	FULL & THICK
CHD	285	CHRYSOBALANUS ICAGO 'HORIZONTAL'	DWARF COCOPALM	3 GAL	12" X 12"	24" O.C.	Y	FULL & THICK, NOT STRETCHED, FLORIDA FANCY
CL	12	CODIARUM VARIAGTUM 'FRANKLIN ROOSEVELT'	FRANKLIN ROOSEVELT CROTON	3 GAL	18" X 18"	24" O.C.	Y	FULL & THICK
FG	341	FICUS MACROPHYLLA 'GREEN ISLAND'	GREEN ISLAND FICUS	3 GAL	15" X 15"	24" O.C.	N	FULL & THICK
H5	31	HIBISCUS 'SEMINOLE PINK'	SEMINOLE PINK HIBISCUS	7 GAL	24" X 24"	30" O.C.	N	FULL & THICK
IV	42	ILEX VOMITORIA 'SHILLINGS DWARF'	DWARF YAUPON HOLLY	3 GAL	15" X 15"	24" O.C.	Y	FULL & THICK
MUH	133	MULHBERGIA CAPILLARIS	PINK MUHLY GRASS	3 GAL	24" X 24"	30" O.C.	Y	FULL & THICK
PD	113	PODOPARPUS MACROPHYLLUS 'DWARF PRINGLES'	DWARF PODOPARPUS	3 GAL	15" X 15"	18" O.C.	Y	FULL & THICK
RL	269	RONDELETIA LEUCOPHYLLA	PANAMA ROSE	3 GAL	18" X 18"	24" O.C.	N	FULL & THICK
TF	253	TRIPSACUM FLORIDANA	DWARF FAKAHATCHEE GRASS	3 GAL	24" X 24"	30" O.C.	Y	FULL & THICK
WA	74	WRIGHTIA ANTIYDENTERICA	ASIAN SNOW JASMINE	3 GAL	18" X 18"	24" O.C.	N	FULL & THICK

SOD: STENOTAPHRUM SECONDATUM 'FLORITAM' - ST. AUGUSTINE 'FLORITAM' SOD = APPROXIMATELY 40,885 SQ. FT.