



LAND PLANNING + LANDSCAPE ARCHITECTURE

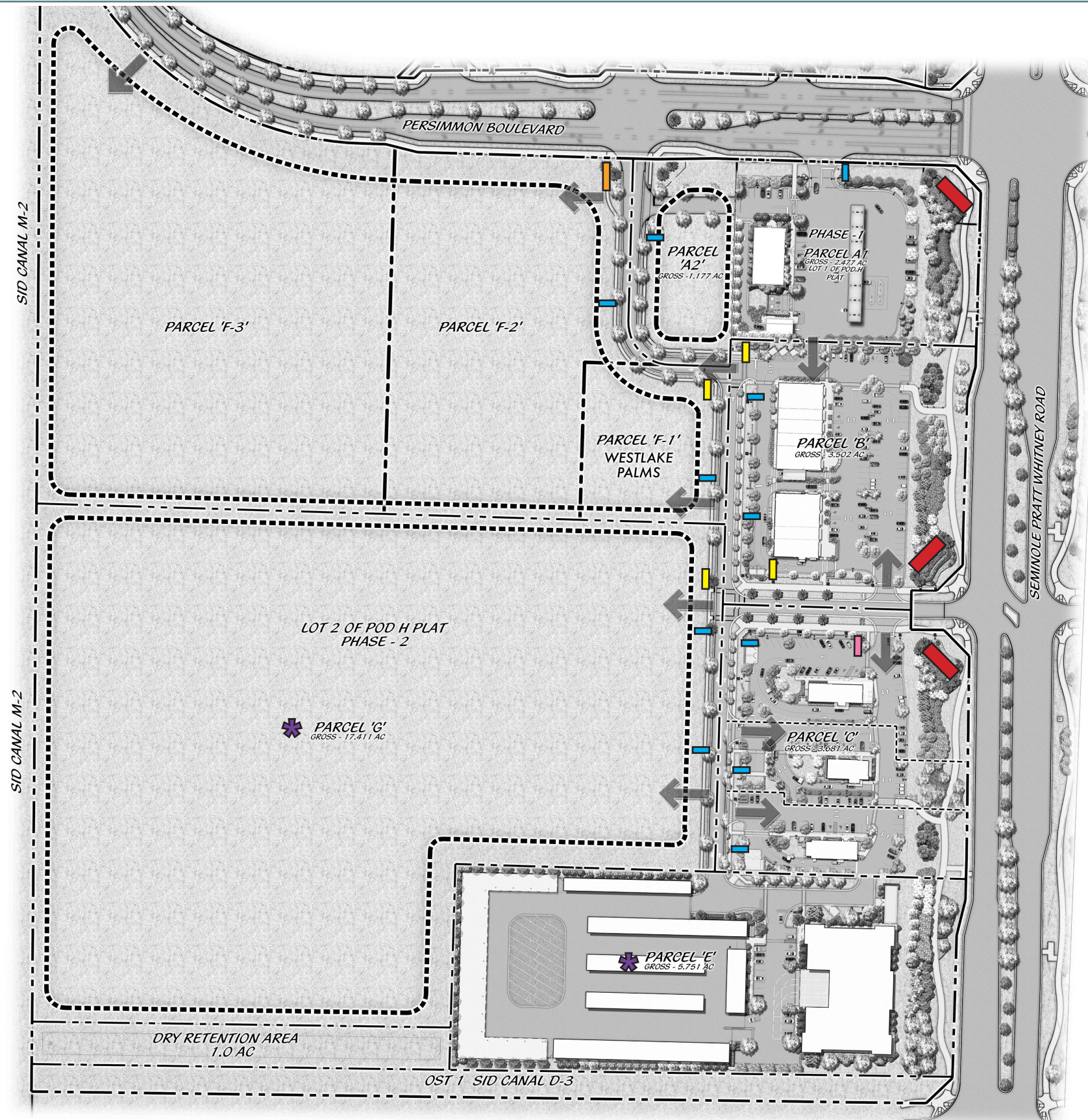


Cotleur & Hearing

1934 COMMERCE LANE, SUITE 1
JUPITER, FL 33458
561-747-6336
www.cotleurhearing.com

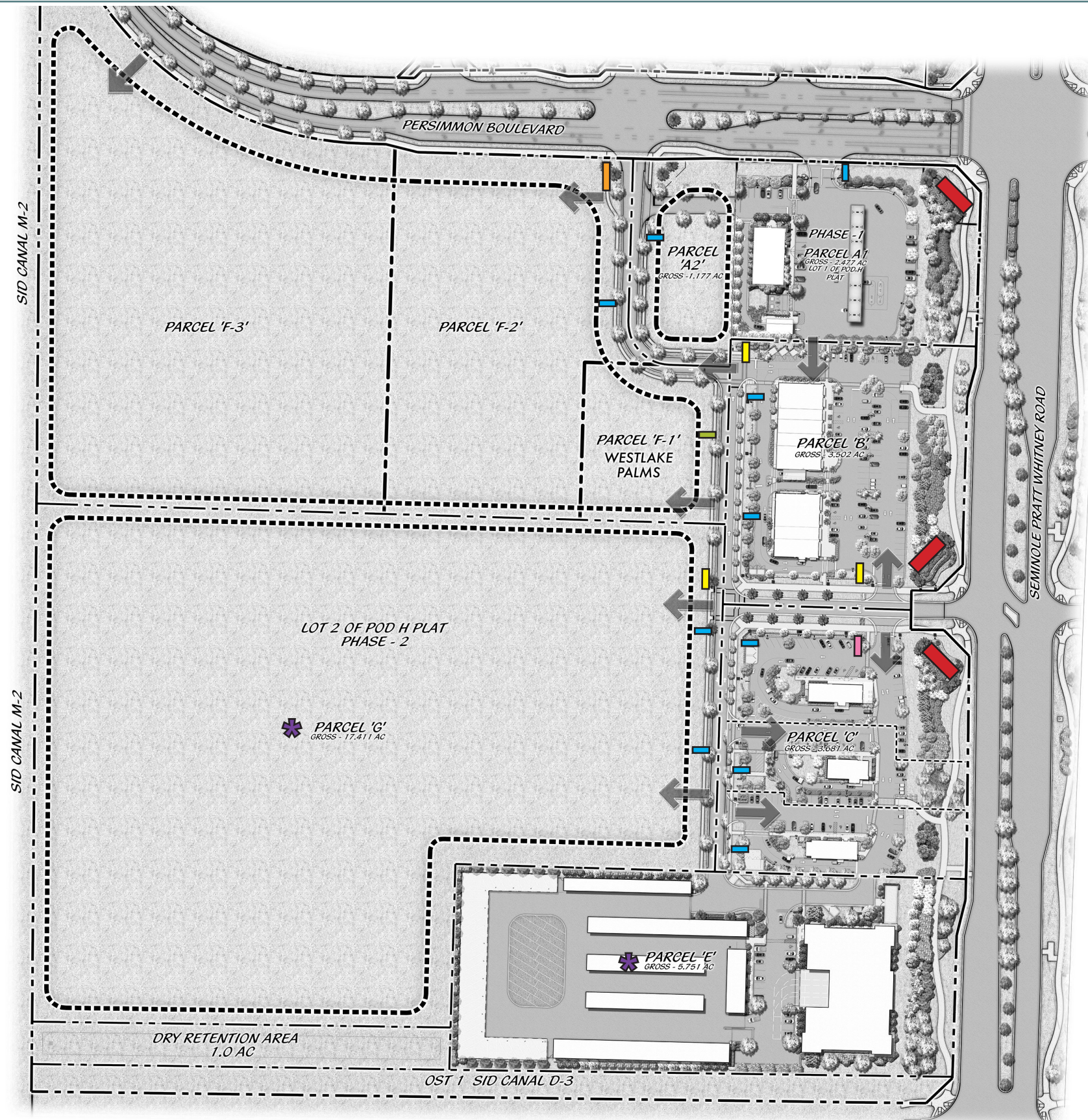
PARCEL H, SUB-PARCEL F-1
MASTER SIGNAGE PROGRAM
JULY 30, 2024

- 1** SIGN LOCATION MAP - APPROVED - PARCEL H SIGNS
- 2** SIGN LOCATION MAP - PROPOSED - PARCEL H SIGNS
- 3** SIGN LOCATION MAP - PROPOSED - SUB-PARCEL F-1 SIGNS (WESTLAKE PALMS)
- 4** NON-RESIDENTIAL ENTRY POD SIGN
- 5** PRIMARY GROUND SIGN - 12 TENANTS
- 6** WESTLAKE PALMS GROUND SIGN- 6 TENANTS
- 7** WALL SIGNAGE



SIGN LOCATION MAP

- NON RESIDENTIAL POD ENTRY SIGN
- PRIMARY GROUND SIGN
- SECONDARY GROUND SIGN- 6 TENANTS
- SECONDARY GROUND SIGN- 3 TENANTS
- INDIVIDUAL GROUND SIGN
- MSP BY OTHER



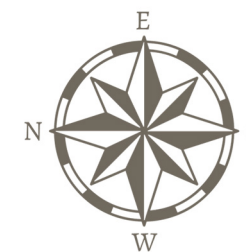
SIGN LOCATION MAP

- NON RESIDENTIAL POD ENTRY SIGN
- PRIMARY GROUND SIGN
- SECONDARY GROUND SIGN- 6 TENANTS
- WESTLAKE PALMS GROUND SIGN- 6 TENANTS
- SECONDARY GROUND SIGN- 3 TENANTS
- INDIVIDUAL GROUND SIGN
- MSP BY OTHER

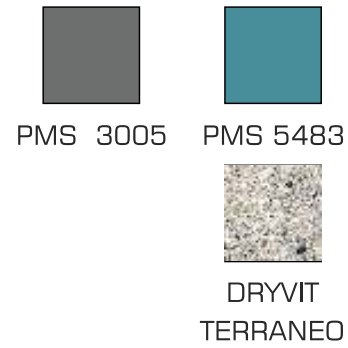


SIGN LOCATION MAP

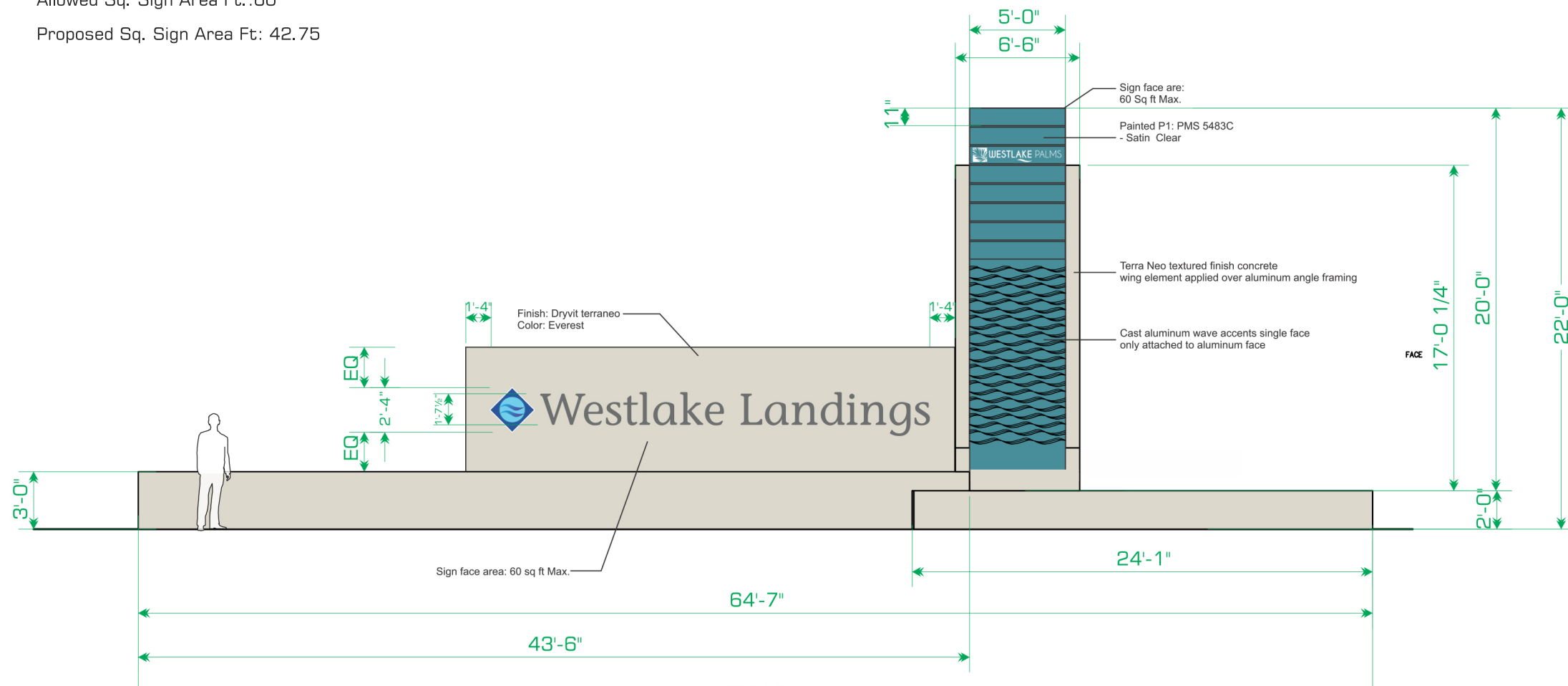
-  WESTLAKE PALMS GROUND SIGN- 6 TENANTS
-  PRINCIPAL TENANT WALL SIGN 30" HEIGHT
*ONE LOCATION TO BE SELECTED ON NORTH AND SOUTH ELEVATION
-  SECONDARY TENANT WALL SIGN 24" HEIGHT
-  BUILDING ID WALL SIGN
-  PROPOSED ART IN PUBLIC PLACES LOCATION



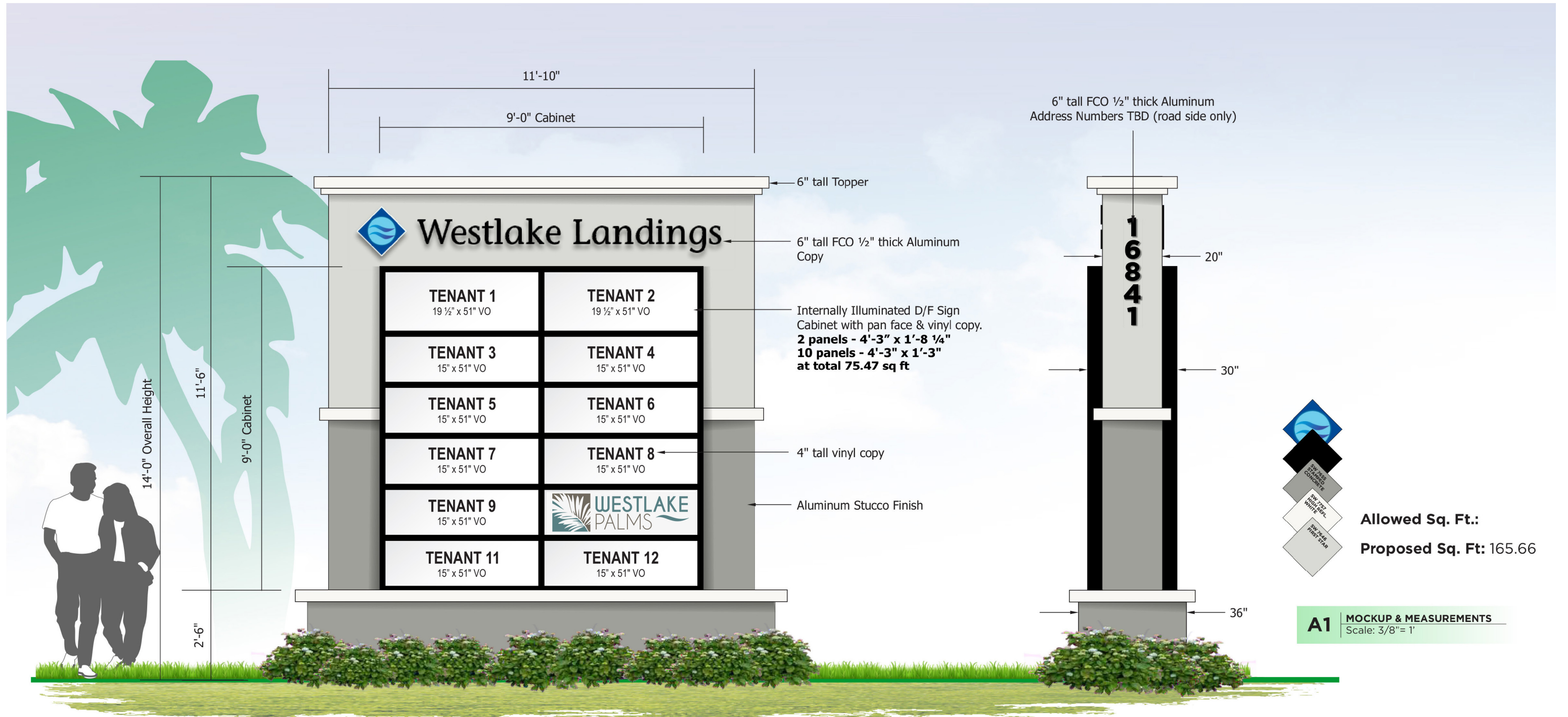
NON RESIDENTIAL POD ENTRY SIGN



Main cabinet color: Dryvit Terraneo Everest
 Header color: Grey
 Pole cover: PMS 5483
 Embellishments: Dryvit Terraneo
 Allowed Sq. Sign Area Ft.: 60
 Proposed Sq. Sign Area Ft.: 42.75

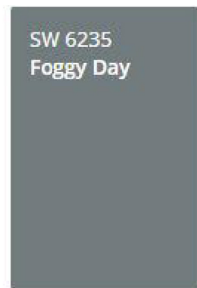


INTERNALLY-ILLUMINATED SINGLE SIDED MONUMENT SIGN WITH REVERSE CHANNEL LETTERS



- Channel letters shall be Helvetica medium or Americana Extra Bold.
- Letters shall be all caps unless approved by Landlord.
- Regional and National chains are permitted to use brand logo if approved by Landlord.

WESTLAKE PALMS GROUND SIGN - 6 TENANTS



SW 6235
Foggy Day

PAINT COLOR 2



SW 7005
Pure White

PAINT COLOR 1



PORCELAIN TILE SLAB-GREY- 24X48-MATERIAL TO BE SELECTED



SIDING - RESYSTA - 6" PROFILE-COLOR - PALE GOLDEN



SCREEN WALL - RESYSTA -2 CHANNELS THICK - PALE GOLDEN



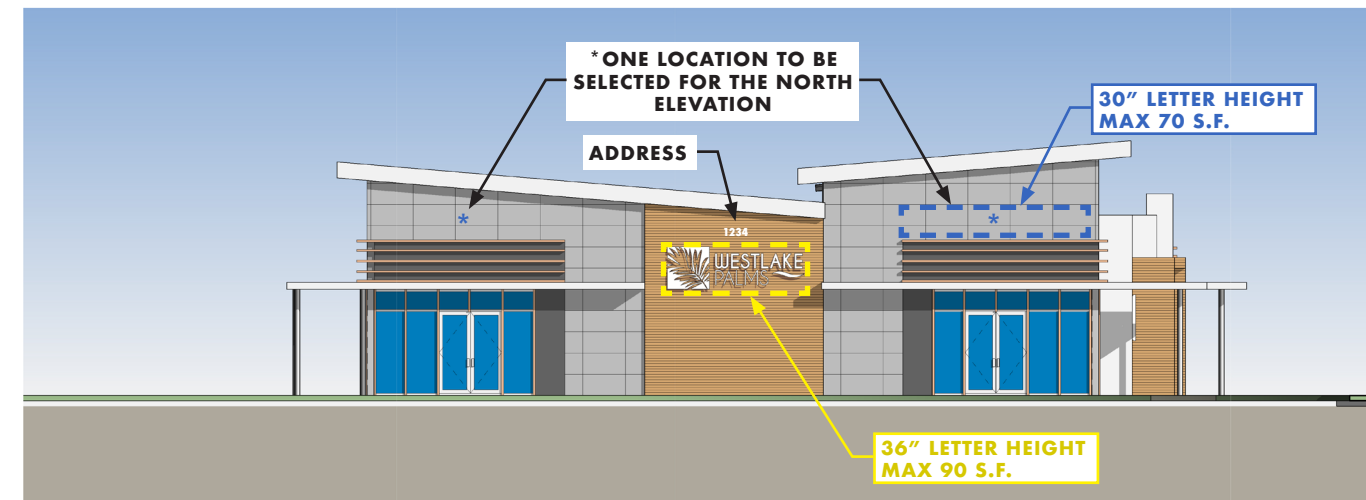
C02, Pale Golden



EXTERIOR ELEVATION - WEST



EXTERIOR ELEVATION - EAST



EXTERIOR ELEVATION - NORTH



2
A3.02
1/8" = 1'-0"

EXTERIOR ELEVATION - SOUTH

PRINCIPAL GROUND FLOOR TENANT WALL SIGN
 MAX 30" LETTERS, 2 LINES OF COPY, 30" MAX LOGO (70 SF)
 2.5 SF PER LF OF FACADE
 *ONE LOCATION TO BE SELECTED ON NORTH AND SOUTH ELEVATION

SECONDARY GROUND FLOOR TENANT WALL SIGN
 MAX 24" LETTERS, 2 LINES OF COPY, 24" MAX LOGO (70 SF)
 2.0 SF PER LF OF FACADE

BUILDING ID SIGN
 MAX 36" OVERALL, MAX 36" LETTERS, 2 LINES OF COPY, MAX 36" LOGO
 (90 SF EA)

BUILDING ADDRESS
 MIN 6" NUMBERS

NOTES:

- WALL SIGN LETTERS SHALL BE EITHER 1/4" THICK FLAT CUT METAL OR INDIVIDUAL DIMENSIONAL CHANNEL LETTERS.
- LETTER STYLE, COLOR, AND FONT TO BE DETERMINED BY TENANT AND LANDLORD. STANDARD DEFAULT STYLE SHALL BE FUTURA BOLD.
- LETTERS SHALL BE ALL CAPS UNLESS APPROVED BY LANDLORD.
- LOGOS ARE PREMISSABLE IF APPROVED BY LANDLORD.
- WINDOW SIGNS SHALL CONFORM TO SECTION 6.9 OF THE WESTLAKE SIGN CODE. WINDOW SIGNAGE SHALL NOT EXCEED 20% OF THE GLASS AREA.
- ALL WINDOW SIGNS MUST BE APPROVED BY THE LANDLORD.
- PROPOSED CODE REVISION: MAX 50% OF THE AREA OF EACH WALL SIGN MAY INCORPORATE A LOGO OF ANY COLOR. THE LOGO SHALL NOT EXCEED THE TOTAL HEIGHT OF THE SIGN ON THE BUILDING.