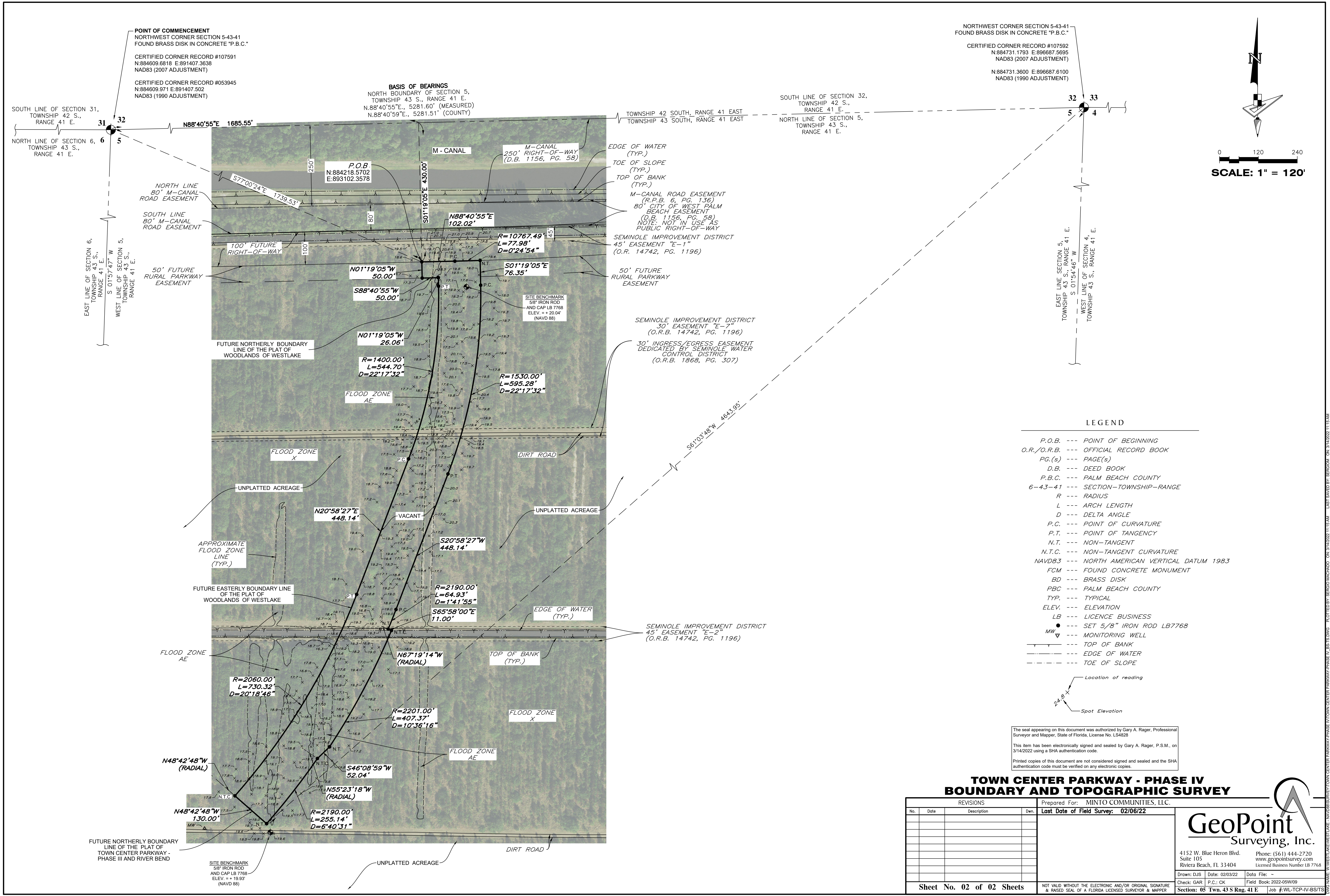


Exhibit 'C'  
TOWN CENTER PARKWAY PHASE IV  
TOPOGRAPHICAL SURVEY

THIS SPACE INTENTIONALLY LEFT BLANK

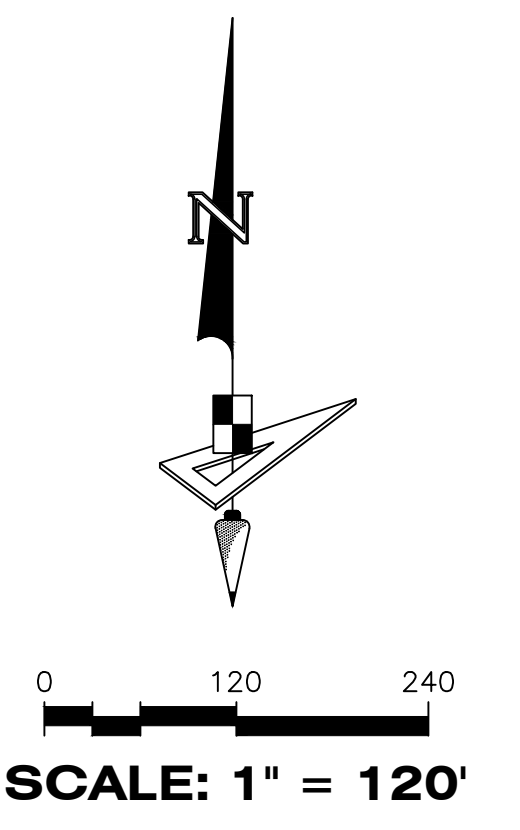




NORTHWEST CORNER SECTION 5-43-41  
 FOUND BRASS DISK IN CONCRETE "P.B.C."  
 CERTIFIED CORNER RECORD #107591  
 N:884609.8818 E:891407.3638  
 NAD83 (2007 ADJUSTMENT)  
 CERTIFIED CORNER RECORD #053945  
 N:884609.971 E:891407.502  
 NAD83 (1990 ADJUSTMENT)

**BASIS OF BEARINGS**  
 NORTH BOUNDARY OF SECTION 5,  
 TOWNSHIP 43 S., RANGE 41 E.  
 N.88°40'55"E., 5281.60' (MEASURED)  
 N.88°40'59"E., 5281.51' (COUNTY)

TOWNSHIP 42 SOUTH, RANGE 41 EAST  
 TOWNSHIP 43 SOUTH, RANGE 41 EAST  
 SOUTH LINE OF SECTION 32,  
 TOWNSHIP 42 S.,  
 RANGE 41 E.  
 NORTH LINE OF SECTION 5,  
 TOWNSHIP 43 S.,  
 RANGE 41 E.



- LEGEND**
- P.O.B. --- POINT OF BEGINNING
  - O.R./O.R.B. --- OFFICIAL RECORD BOOK
  - PG.(s) --- PAGE(S)
  - D.B. --- DEED BOOK
  - P.B.C. --- PALM BEACH COUNTY
  - 6-43-41 --- SECTION-TOWNSHIP-RANGE
  - R --- RADIUS
  - L --- ARCH LENGTH
  - D --- DELTA ANGLE
  - P.C. --- POINT OF CURVATURE
  - P.T. --- POINT OF TANGENCY
  - N.T. --- NON-TANGENT
  - N.T.C. --- NON-TANGENT CURVATURE
  - NAVD83 --- NORTH AMERICAN VERTICAL DATUM 1983
  - FCM --- FOUND CONCRETE MONUMENT
  - BD --- BRASS DISK
  - PBC --- PALM BEACH COUNTY
  - TYP. --- TYPICAL
  - ELEV. --- ELEVATION
  - LB --- LICENCE BUSINESS
  - MW --- SET 5/8" IRON ROD LB7768
  - MONITORING WELL
  - TOP OF BANK
  - EDGE OF WATER
  - TOE OF SLOPE
- Location of reading  
 Spot Elevation

The seal appearing on this document was authorized by Gary A. Rager, Professional Surveyor and Mapper, State of Florida, License No. LS4828  
 This item has been electronically signed and sealed by Gary A. Rager, P.S.M., on 3/14/2022 using a SHA authentication code.  
 Printed copies of this document are not considered signed and sealed and the SHA authentication code must be verified on any electronic copies.

**TOWN CENTER PARKWAY - PHASE IV  
 BOUNDARY AND TOPOGRAPHIC SURVEY**

REVISIONS			
No.	Date	Description	Dwn.

Prepared For: MINTO COMMUNITIES, LLC.  
 Last Date of Field Survey: 02/06/22

**GeoPoint**  
 Surveying, Inc.

4152 W. Blue Heron Blvd. Phone: (561) 444-2720  
 Suite 105 www.geopointsurvey.com  
 Riviera Beach, FL 33404 Licensed Business Number LB 7768

Drawn: DJS Date: 02/03/22 Data File: -  
 Check: GAR P.C.: CK Field Book: 2022-05W109  
 Section: 05 Twn. 43 S Rng. 41 E Job #WL-TCP-IV-B5/T