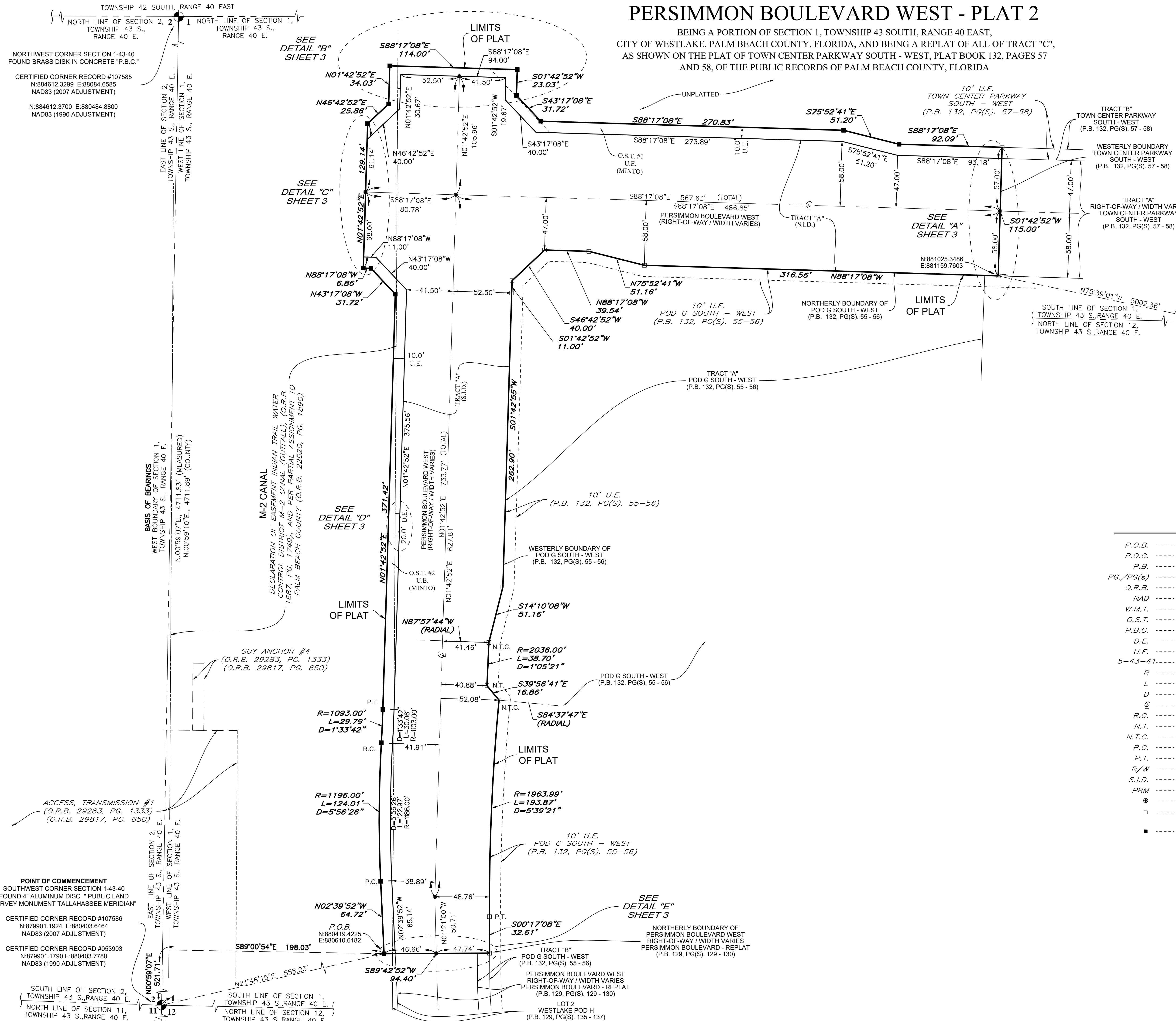
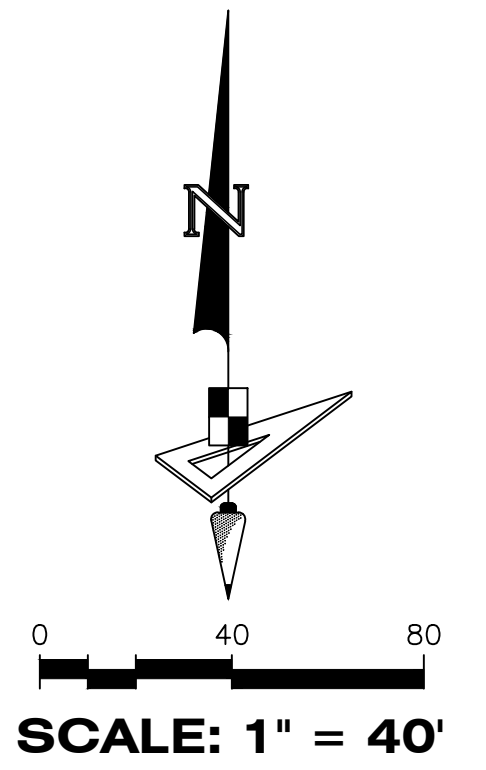


Exhibit 'B'
PERSIMMON BLVD. WEST – PLAT 2
PLAT

THIS PAGE WAS LEFT BLANK ON PURPOSE

PERSIMMON BOULEVARD WEST - PLAT 2

BEING A PORTION OF SECTION 1, TOWNSHIP 43 SOUTH, RANGE 40 EAST,
CITY OF WESTLAKE, PALM BEACH COUNTY, FLORIDA, AND BEING A REPLAT OF ALL OF TRACT "C",
AS SHOWN ON THE PLAT OF TOWN CENTER PARKWAY SOUTH - WEST, PLAT BOOK 132, PAGES 57
AND 58, OF THE PUBLIC RECORDS OF PALM BEACH COUNTY, FLORIDA



TRACT "B"
TOWN CENTER PARKWAY
SOUTH - WEST
(P.B. 132, PG(S). 57 - 58)

WESTERLY BOUNDARY
TOWN CENTER PARKWAY
SOUTH - WEST
(P.B. 132, PG(S). 57 - 58)

TRACT "A"
RIGHT-OF-WAY / WIDTH VARIES
TOWN CENTER PARKWAY
SOUTH - WEST
(P.B. 132, PG(S). 57 - 58)

SOUTHEAST CORNER SECTION 1-43-40
N:879785.5536 E:886006.0493
NAD83 (2007 ADJUSTMENT)

N:879785.7000 E:886006.0300
NAD83 (1990 ADJUSTMENT)

LEGEND

- P.O.B. ----- POINT OF BEGINNING
- P.O.C. ----- POINT OF COMMENCEMENT
- P.B. ----- PLAT BOOK
- PG./PG(S) ----- PAGE(S)
- O.R.B. ----- ROAD PLAT BOOK
- NAD ----- NORTH AMERICAN DATUM
- W.M.T. ----- WATER MANAGEMENT TRACT
- O.S.T. ----- OPEN SPACE TRACT
- P.B.C. ----- PALM BEACH COUNTY
- D.E. ----- DRAINAGE EASEMENT
- U.E. ----- UTILITY EASEMENT
- 5-43-41 ----- SECTION-TOWNSHIP-RANGE
- R ----- RADIUS
- L ----- ARC LENGTH
- D ----- DELTA ANGLE
- CL ----- CENTER LINE OF ROAD
- R.C. ----- REVERSE CURVATURE
- N.T. ----- NON-TANGENT
- N.T.C. ----- NON-TANGENT CURVATURE
- P.C. ----- POINT OF CURVATURE
- P.T. ----- POINT OF TANGENCY
- R/W ----- RIGHT-OF-WAY
- S.I.D. ----- SEMINOLE IMPROVEMENT DISTRICT
- PRM ----- PERMANENT REFERENCE MONUMENT
- ----- PERMANENT CONTROL POINT
- ----- FOUND 4"x4" CONCRETE MONUMENT WITH
2" ALUMINUM DISK STAMPED "PRM LB 7768"
- ----- SET 4"x4" CONCRETE MONUMENT WITH
2" ALUMINUM DISK STAMPED "PRM LB 7768"

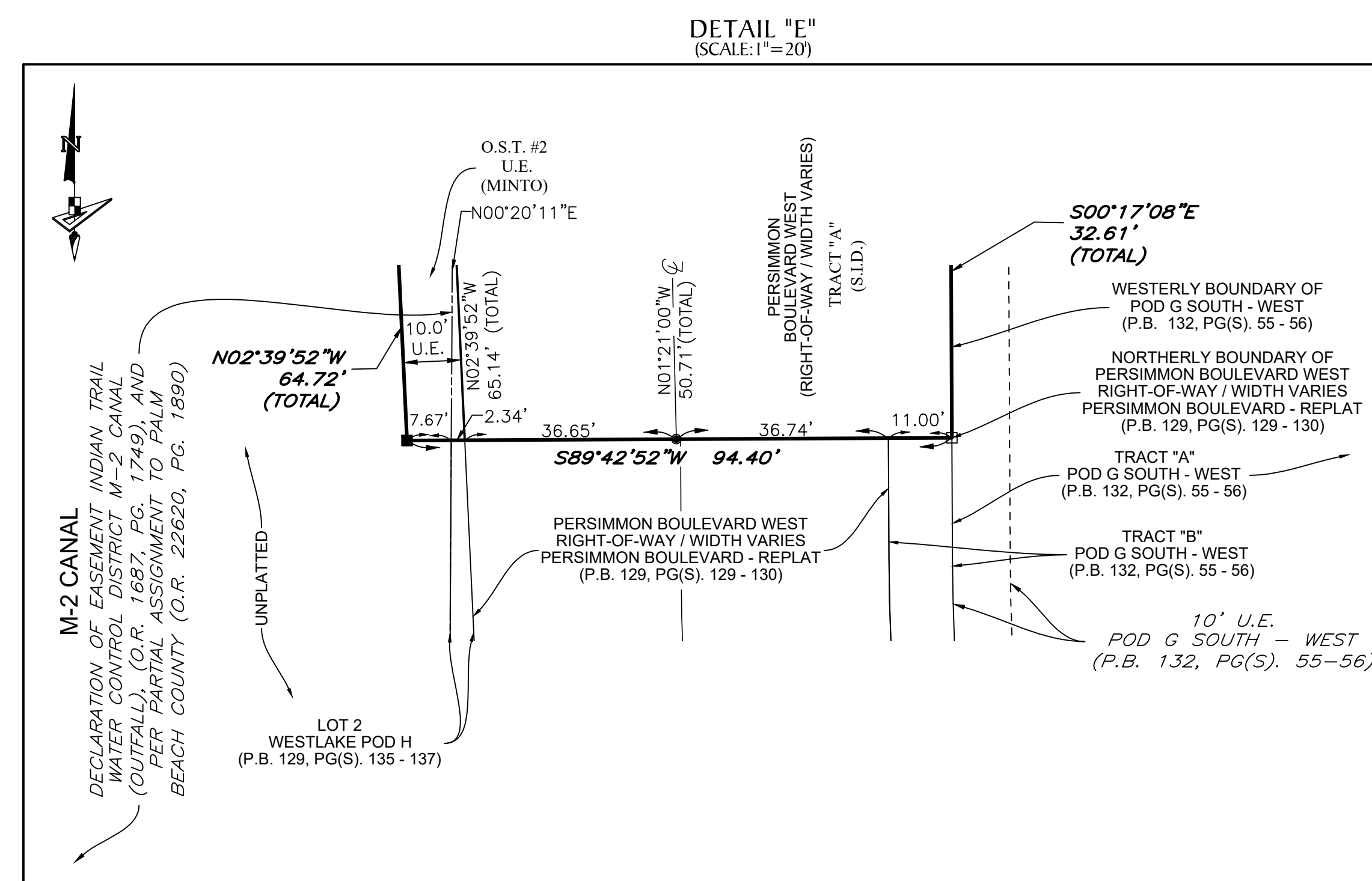
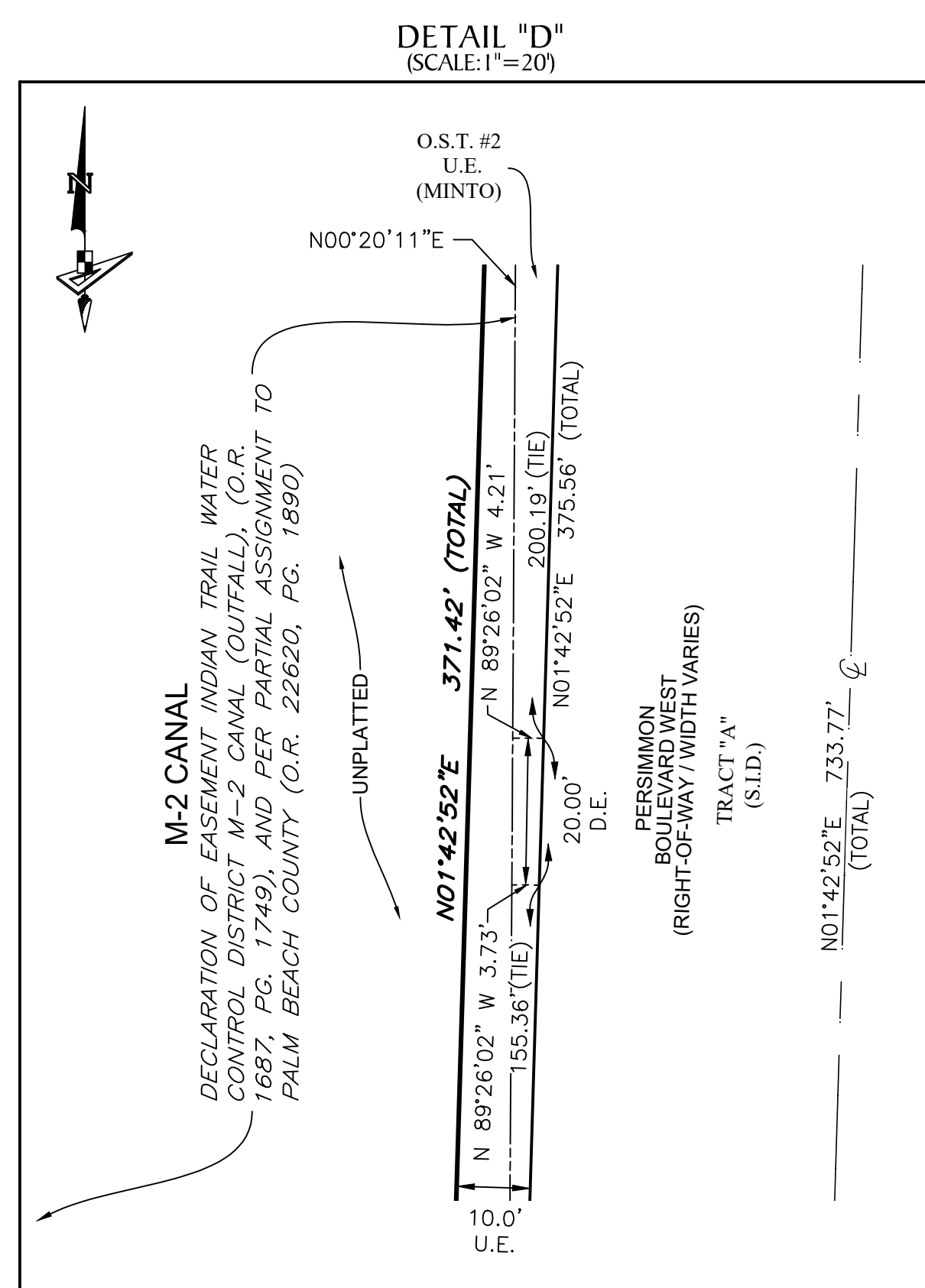
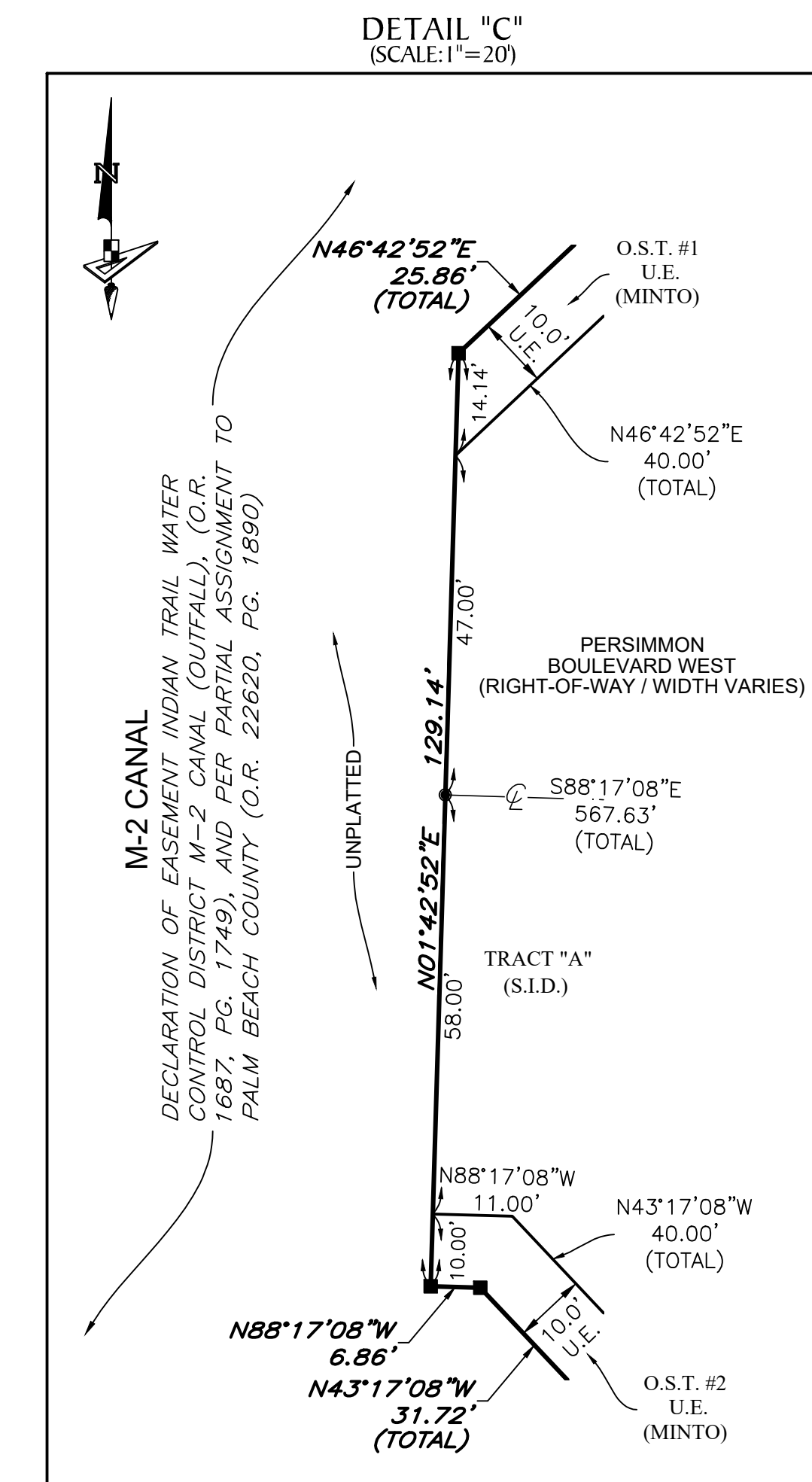
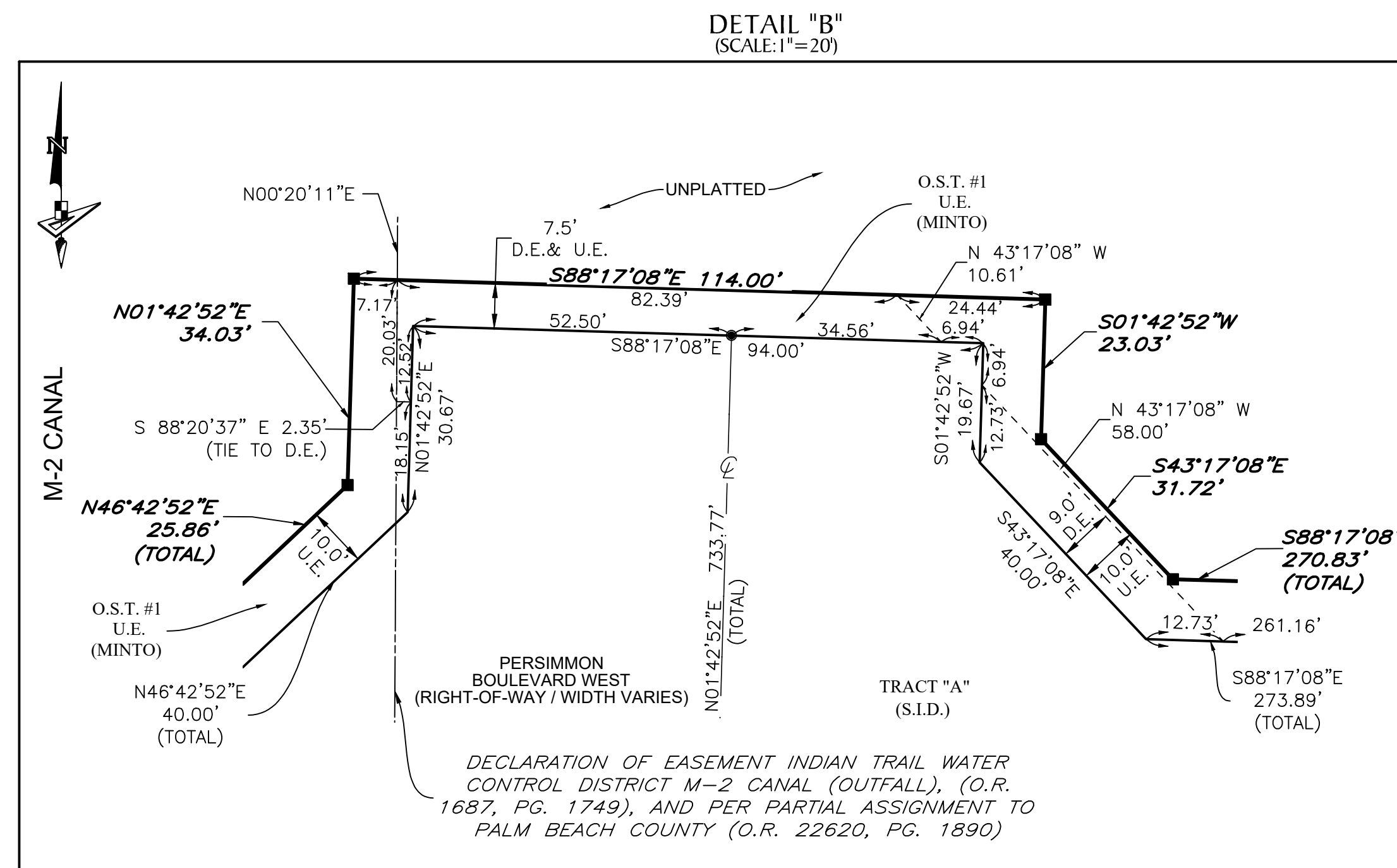
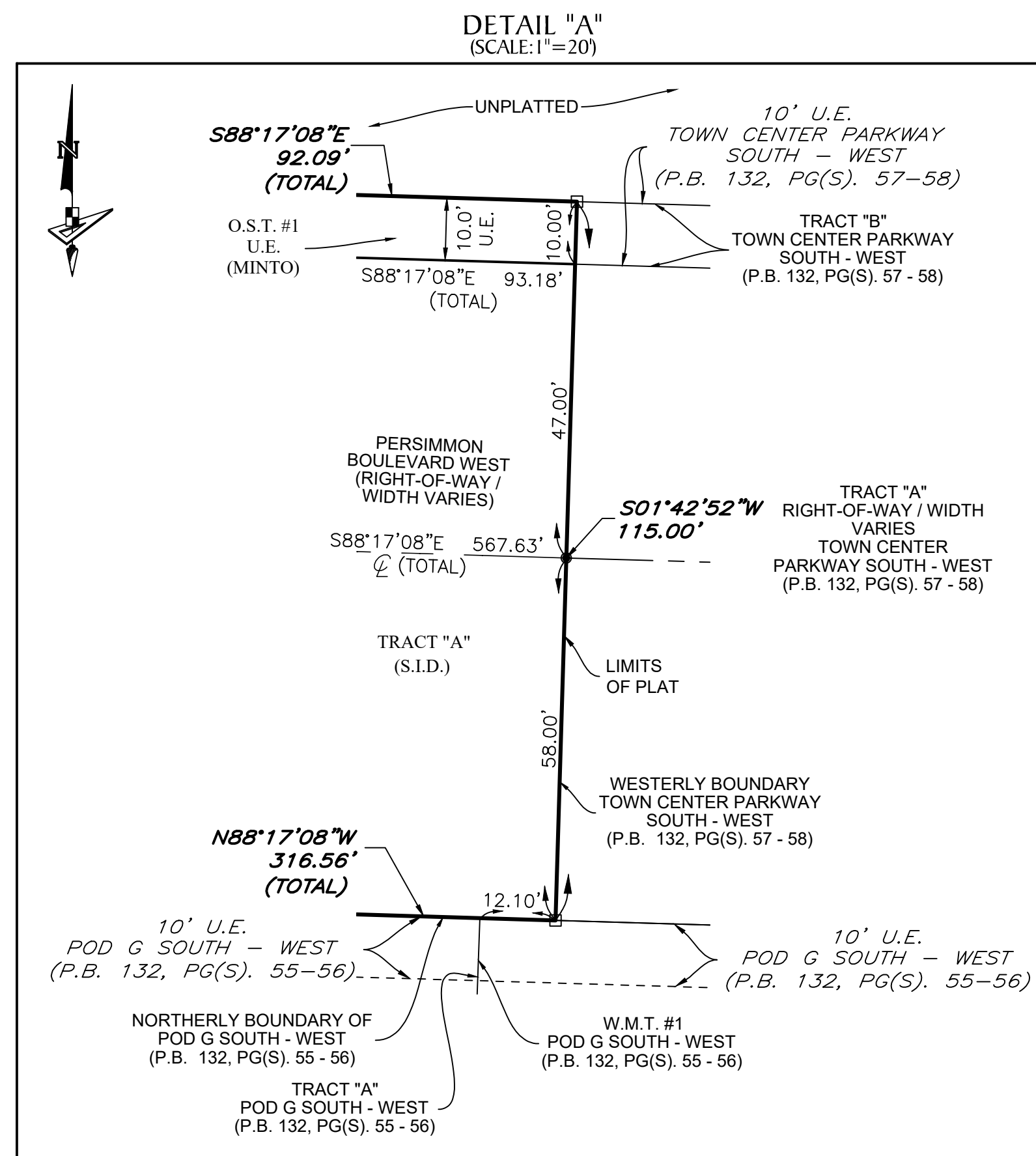


4152 W. Blue Heron Blvd. Phone: (561) 444-2720
Suite 105 www.geopointsurvey.com
Riviera Beach, FL 33404 Licensed Business Number: LB 7768

DRAWN: WESTLAKE WESTLAKE - NAD83 - PERSIMMON BOULEVARD WEST PLAT 2 - PLAT WAS DRAWN - PLOTTED BY: SERGIO MACHADO - ON: 3/20/22 2:29 PM - LAST SAVED BY: SERGIO - ON: 3/7/2022 1:20 PM

PERSIMMON BOULEVARD WEST - PLAT 2

BEING A PORTION OF SECTION 1, TOWNSHIP 43 SOUTH, RANGE 40 EAST,
CITY OF WESTLAKE, PALM BEACH COUNTY, FLORIDA, AND BEING A REPLAT OF ALL OF TRACT "C",
AS SHOWN ON THE PLAT OF TOWN CENTER PARKWAY SOUTH - WEST, PLAT BOOK 132, PAGES 57
AND 58, OF THE PUBLIC RECORDS OF PALM BEACH COUNTY, FLORIDA



LEGEND

- P.O.B. ----- POINT OF BEGINNING
- P.O.C. ----- POINT OF COMMENCEMENT
- P.B. ----- PLAT BOOK
- PG./PG(S) ----- PAGE(S)
- O.R.B. ----- ROAD PLAT BOOK
- NAD ----- NORTH AMERICAN DATUM
- W.M.T. ----- WATER MANAGEMENT TRACT
- O.S.T. ----- OPEN SPACE TRACT
- P.B.C. ----- PALM BEACH COUNTY
- D.E. ----- DRAINAGE EASEMENT
- U.E. ----- UTILITY EASEMENT
- 5-43-41 ----- SECTION-TOWNSHIP-RANGE
- R ----- RADIUS
- L ----- ARC LENGTH
- D ----- DELTA ANGLE
- CL ----- CENTER LINE OF ROAD
- R.C. ----- REVERSE CURVATURE
- N.T. ----- NON-TANGENT
- N.T.C. ----- NON-TANGENT CURVATURE
- P.C. ----- POINT OF CURVATURE
- P.T. ----- POINT OF TANGENCY
- R/W ----- RIGHT-OF-WAY
- S.I.D. ----- SEMINOLE IMPROVEMENT DISTRICT
- PRM ----- PERMANENT REFERENCE MONUMENT
- ----- PERMANENT CONTROL POINT
- ----- FOUND 4"x4" CONCRETE MONUMENT WITH 2" ALUMINUM DISK STAMPED "PRM LB 7768"
- ----- SET 4"x4" CONCRETE MONUMENT WITH 2" ALUMINUM DISK STAMPED "PRM LB 7768"



TOWNSHIP 43 SOUTH, RANGE 40 EAST, SECTION 1, PALM BEACH COUNTY, FLORIDA. PLOTTED BY: SERGIO MACHADO ON: 3/26/22 2:29 PM. LAST SAVED BY: SERGIO ON: 3/26/22 12:30 PM.