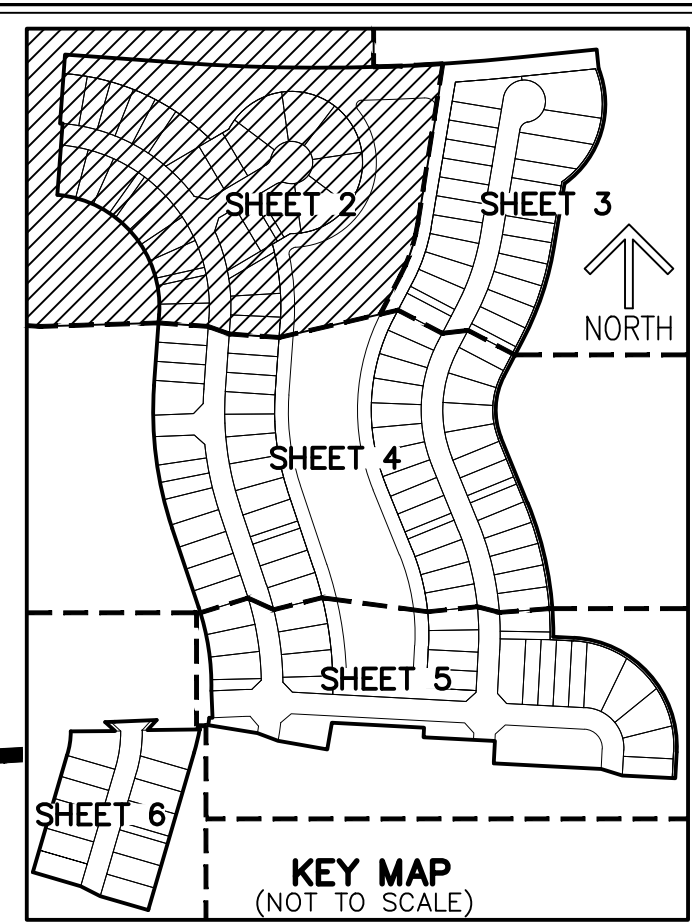
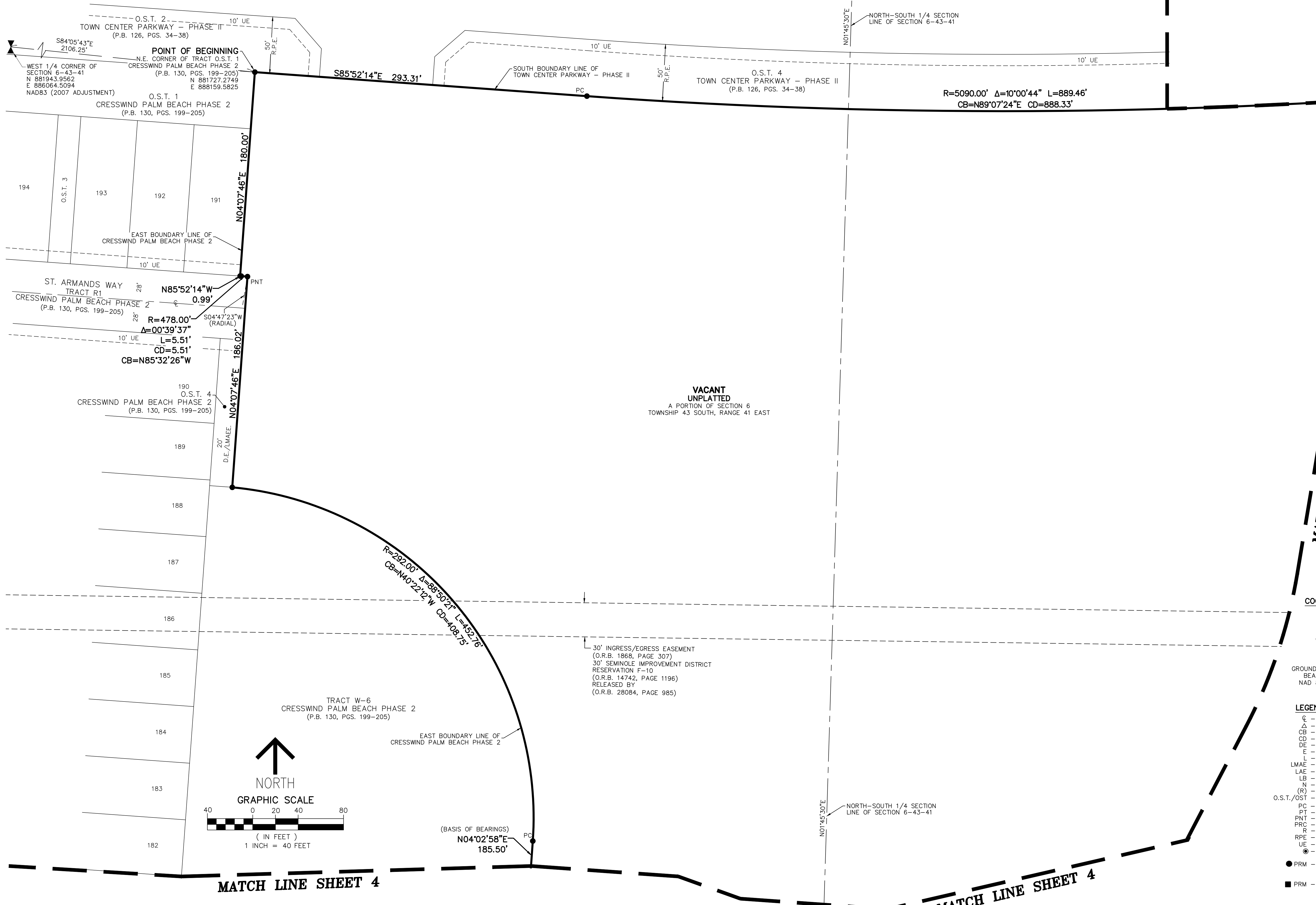


Exhibit 'C'  
CRESSWIND PALM BEACH PHASE 4  
TOPOGRAPHICAL SURVEY

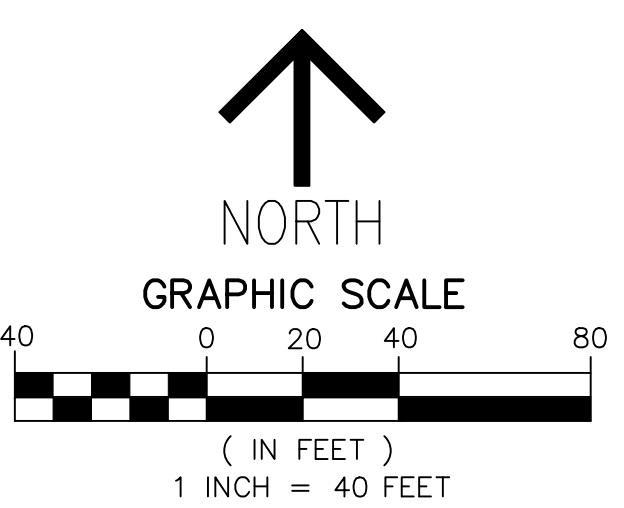
THIS PAGE WAS LEFT BLANK ON PURPOSE





**VACANT UNPLATTED**  
A PORTION OF SECTION 6  
TOWNSHIP 43 SOUTH, RANGE 41 EAST

30' INGRESS/EGRESS EASEMENT  
(O.R.B. 1868, PAGE 307)  
30' SEMINOLE IMPROVEMENT DISTRICT  
RESERVATION F-10  
(O.R.B. 14742, PAGE 1196)  
RELEASED BY  
(O.R.B. 28084, PAGE 985)



**NOTES**  
**COORDINATES, BEARINGS AND DISTANCES**  
COORDINATES SHOWN ARE GRID  
DATUM = NAD 83 (2007 ADJUSTMENT)  
ZONE = FLORIDA EAST  
LINEAR UNIT = US SURVEY FEET  
COORDINATE SYSTEM 1983 STATE PLANE  
TRANSVERSE MERCATOR PROJECTION  
SCALE FACTOR = 1.0000017  
GROUND DISTANCE X SCALE FACTOR = GRID DISTANCE  
BEARINGS AS SHOWN HEREON ARE GRID DATUM,  
NAD 83 (2007 ADJUSTMENT), FLORIDA EAST ZONE.

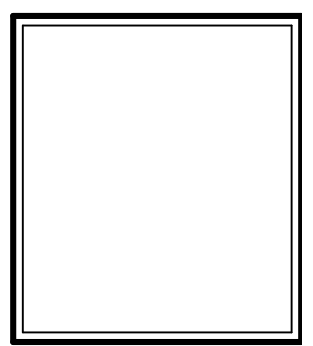
**LEGEND / ABBREVIATIONS**  
 C - CENTERLINE  
 Δ - DELTA (CENTRAL ANGLE)  
 CB - CHORD BEARING  
 CD - CHORD DISTANCE  
 DE - DRAINAGE EASEMENT  
 E - EASTING (WHEN USED WITH COORDINATES)  
 L - ARC LENGTH  
 LMAE - LAKE MAINTENANCE ACCESS EASEMENT  
 LAE - LIMITED ACCESS EASEMENT  
 LB - LICENSED BUSINESS  
 N - NORTHING (WHEN USED WITH COORDINATES)  
 (R) - RADIAL LINE  
 O.S.T./OST - OPEN SPACE TRACT  
 PC - POINT OF CURVATURE  
 PT - POINT OF TANGENCY  
 PNT - POINT OF NON-TANGENCY  
 PRC - POINT OF REVERSE CURVATURE  
 R - RADIUS  
 RPE - RURAL PARKWAY EASEMENT  
 UE - UTILITY EASEMENT  
 ● - SET PERMANENT CONTROL POINT  
 NAIL AND DISK STAMPED "C&W PRM LB3591"  
 ● PRM - SET PERMANENT REFERENCE MONUMENT  
 SET 5/8" IRON ROD WITH CAP  
 STAMPED "C&W PRM LB3591"  
 ■ PRM - FOUND PERMANENT REFERENCE MONUMENT  
 4" x 4" x 24" CONCRETE MONUMENT WITH  
 DISK STAMPED "PRM LB3591"

BY	
DATE	
REVISIONS	
FILE NAME	8272-PHASE4-SURVEY-4

**CAULFIELD & WHEELER, INC.**  
 CIVIL ENGINEERING - LAND PLANNING  
 LANDSCAPE ARCHITECTURE - SURVEYING  
 7900 GLADES ROAD - SUITE 100  
 BOCA RATON, FLORIDA 33434  
 PHONE (561) 392-1991 / FAX (561) 750-4452

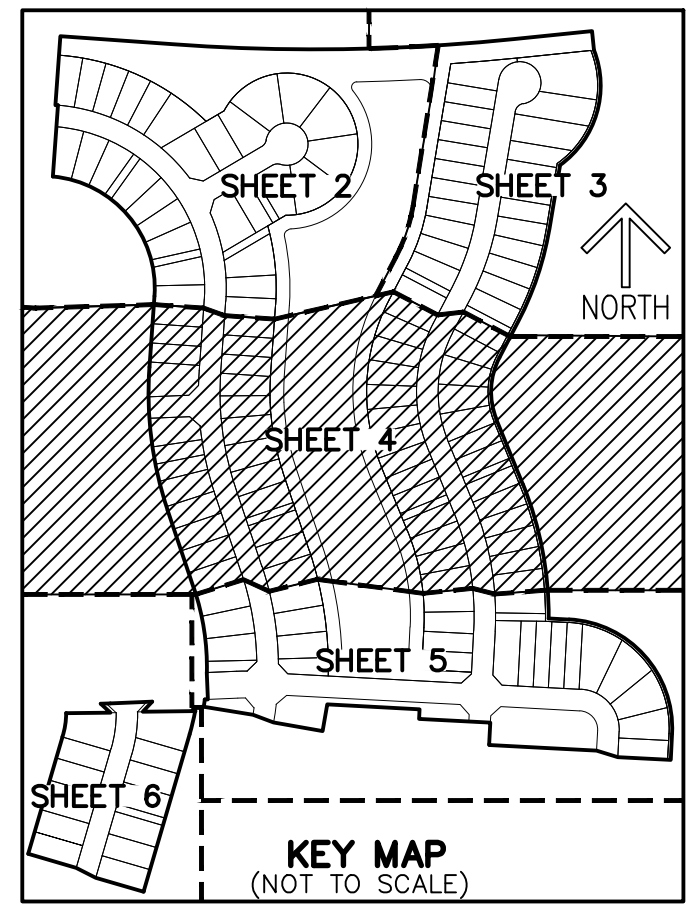
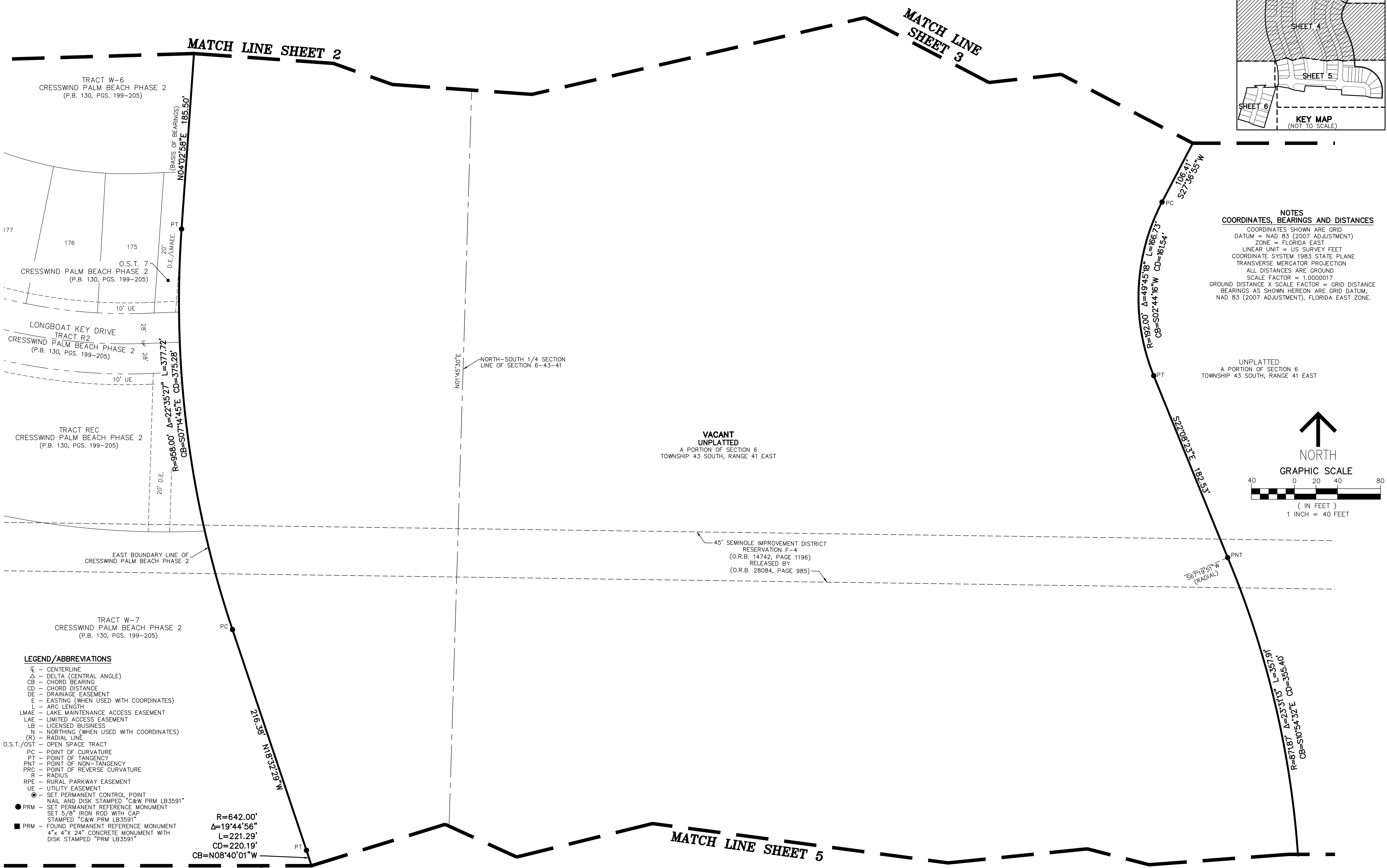
**BOUNDARY SURVEY**  
 A PORTION OF TRACT O.S.T. 21, CRESSWIND PALM BEACH PHASE 2,  
 AS RECORDED IN PLAT BOOK 130, PAGES 199 THROUGH 205,  
 OF THE PUBLIC RECORDS OF PALM BEACH COUNTY, FLORIDA,  
 TOGETHER WITH A PORTION OF SECTION 6, TOWNSHIP 43 SOUTH, RANGE 41 EAST,  
 CITY OF WESTLAKE, PALM BEACH COUNTY, FLORIDA.

DATE 3/01/2022  
 DRAWN BY AS  
 F.B./ PG. ELEC  
 SCALE AS SHOWN



JOB # 8272-4  
 SHT.NO.  
 2  
 OF 6 SHEETS



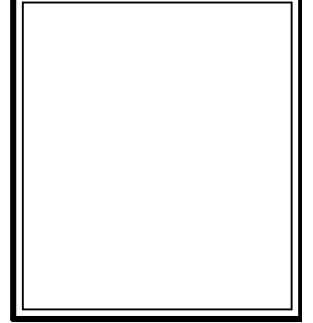


REVISIONS	DATE	BY

**CAULFIELD & WHEELER, INC.**  
 CIVIL ENGINEERING - LAND PLANNING  
 LANDSCAPE ARCHITECTURE - SURVEYING  
 7900 GLADES ROAD - SUITE 100  
 BOCA RATON, FLORIDA 33434  
 PHONE (561) 392-1991 / FAX (561) 750-4452

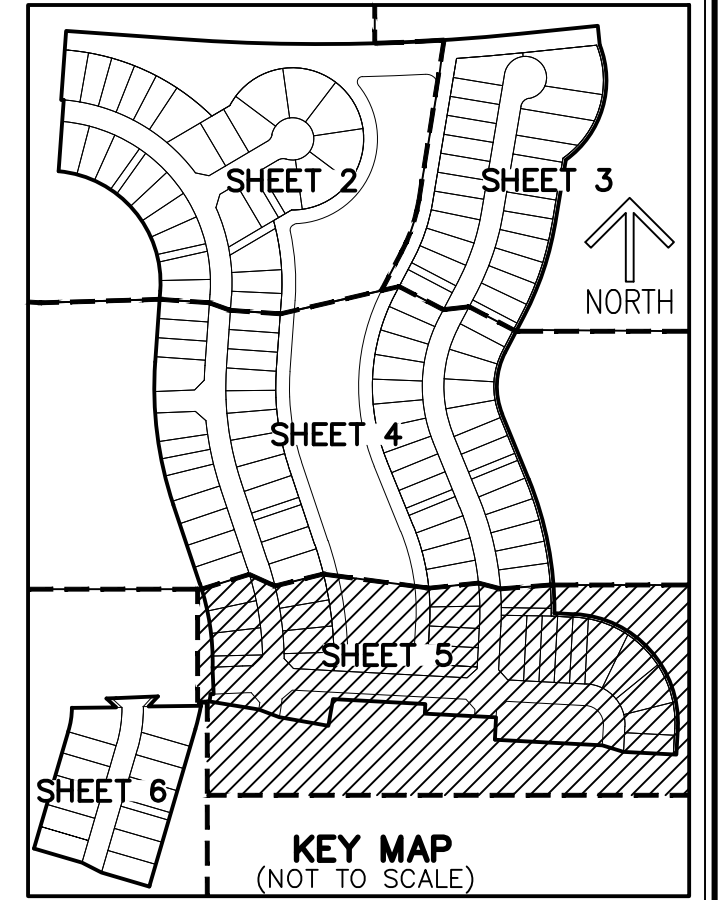
**BOUNDARY SURVEY**  
 A PORTION OF TRACT O.S.T. 21, CRESSWIND PALM BEACH PHASE 2,  
 AS RECORDED IN PLAT BOOK 130, PAGES 199 THROUGH 205,  
 OF THE PUBLIC RECORDS OF PALM BEACH COUNTY, FLORIDA,  
 TOGETHER WITH A PORTION OF SECTION 6, TOWNSHIP 43 SOUTH, RANGE 41 EAST,  
 CITY OF WESTLAKE, PALM BEACH COUNTY, FLORIDA.

DATE 3/01/2022  
 DRAWN BY AS  
 F.B./ PG. ELEC  
 SCALE AS SHOWN



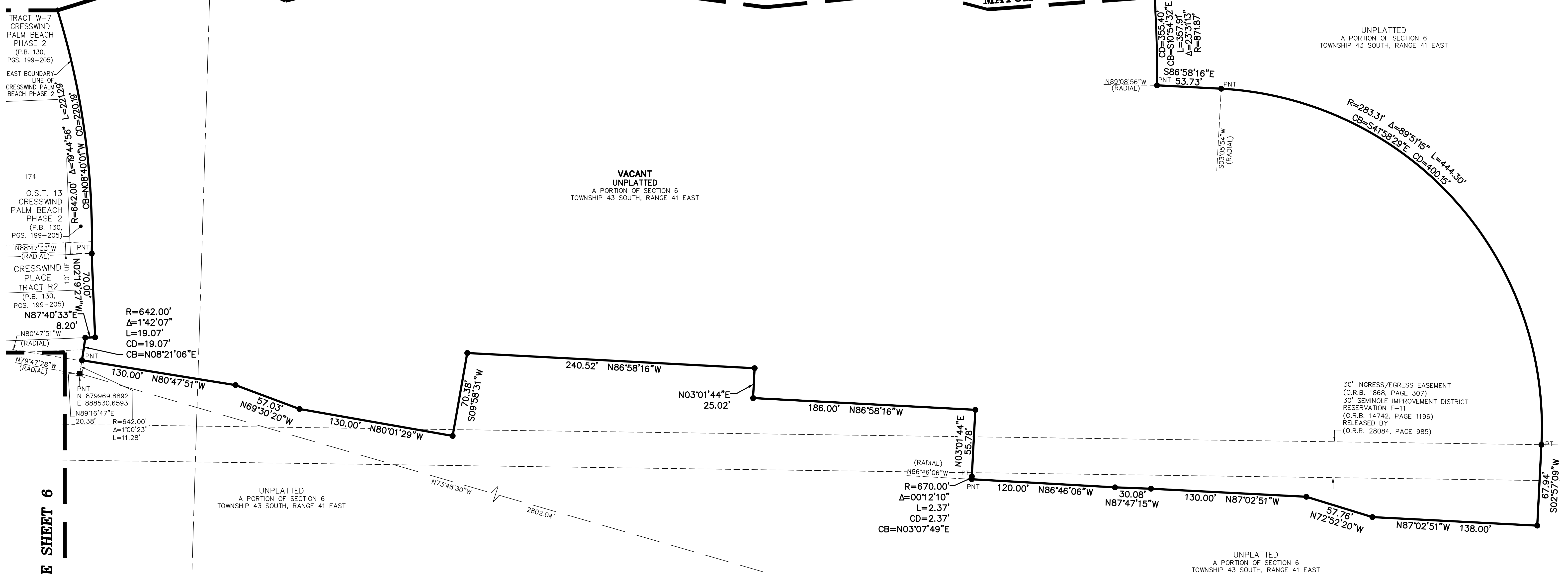
JOB # 8272-4  
 SHT. NO.  
**4**  
 OF 6 SHEETS

**NOTES**  
**COORDINATES, BEARINGS AND DISTANCES**  
 COORDINATES SHOWN ARE GRID  
 DATUM = NAD 83 (2007 ADJUSTMENT)  
 ZONE = FLORIDA EAST  
 LINEAR UNIT = US SURVEY FEET  
 COORDINATE SYSTEM 1983 STATE PLANE  
 TRANSVERSE MERCATOR PROJECTION  
 ALL DISTANCES ARE GROUND  
 SCALE FACTOR = 1.0000017  
 GROUND DISTANCE X SCALE FACTOR = GRID DISTANCE  
 BEARINGS AS SHOWN HEREON ARE GRID DATUM,  
 NAD 83 (2007 ADJUSTMENT), FLORIDA EAST ZONE.



**MATCH LINE SHEET 4**

**MATCH LINE SHEET 4**



TRACT W-7  
 CRESSWIND  
 PALM BEACH  
 PHASE 2  
 (P.B. 130,  
 PGS. 199-205)

O.S.T. 13  
 CRESSWIND  
 PALM BEACH  
 PHASE 2  
 (P.B. 130,  
 PGS. 199-205)

CRESSWIND  
 PLACE  
 TRACT R2  
 (P.B. 130,  
 PGS. 199-205)

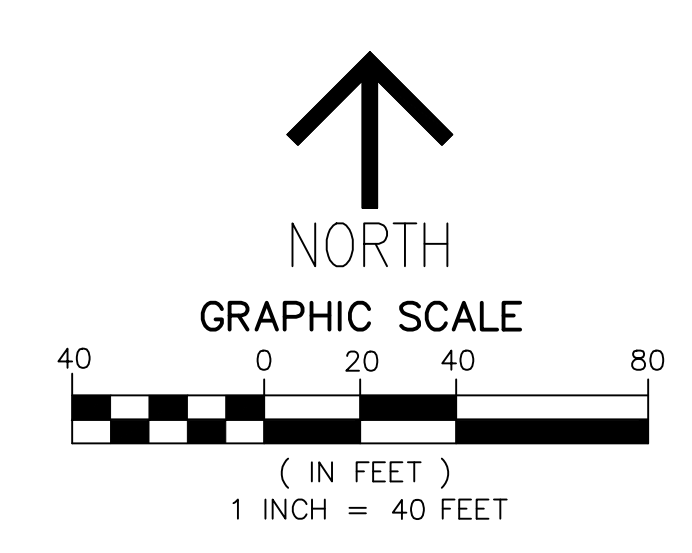
**VACANT UNPLATTED**  
 A PORTION OF SECTION 6  
 TOWNSHIP 43 SOUTH, RANGE 41 EAST

**UNPLATTED**  
 A PORTION OF SECTION 6  
 TOWNSHIP 43 SOUTH, RANGE 41 EAST

**UNPLATTED**  
 A PORTION OF SECTION 6  
 TOWNSHIP 43 SOUTH, RANGE 41 EAST

**UNPLATTED**  
 A PORTION OF SECTION 6  
 TOWNSHIP 43 SOUTH, RANGE 41 EAST

S.E. CORNER OF SECTION 6-43-41  
 FOUND PALM BEACH COUNTY  
 CONCRETE MONUMENT  
 N 879188.5341  
 E 891221.5519



- LEGEND/ABBREVIATIONS**
- CL - CENTERLINE
  - Δ - DELTA (CENTRAL ANGLE)
  - CB - CHORD BEARING
  - CD - CHORD DISTANCE
  - DE - DRAINAGE EASEMENT
  - E - EASTING (WHEN USED WITH COORDINATES)
  - L - ARC LENGTH
  - LMAE - LAKE MAINTENANCE ACCESS EASEMENT
  - LAE - LIMITED ACCESS EASEMENT
  - LB - LICENSED BUSINESS
  - N - NORTHING (WHEN USED WITH COORDINATES)
  - (R) - RADIAL LINE
  - O.S.T./OST - OPEN SPACE TRACT
  - PC - POINT OF CURVATURE
  - PT - POINT OF TANGENCY
  - PNT - POINT OF NON-TANGENCY
  - PRC - POINT OF REVERSE CURVATURE
  - R - RADIUS
  - RPE - RURAL PARKWAY EASEMENT
  - UE - UTILITY EASEMENT
  - ⊙ - SET PERMANENT CONTROL POINT NAIL AND DISK STAMPED "C&W PRM LB3591"
  - - PRM - SET PERMANENT REFERENCE MONUMENT SET 5/8" IRON ROD WITH CAP STAMPED "C&W PRM LB3591"
  - - PRM - FOUND PERMANENT REFERENCE MONUMENT 4" x 4" x 24" CONCRETE MONUMENT WITH DISK STAMPED "PRM LB3591"

REVISIONS	DATE	BY

**CAULFIELD & WHEELER, INC.**  
 CIVIL ENGINEERING - LAND PLANNING  
 LANDSCAPE ARCHITECTURE - SURVEYING  
 7900 GLADES ROAD - SUITE 100  
 BOCA RATON, FLORIDA 33434  
 PHONE (561) 392-1991 / FAX (561) 750-4452

**BOUNDARY SURVEY**  
 A PORTION OF TRACT O.S.T. 21, CRESSWIND PALM BEACH PHASE 2,  
 AS RECORDED IN PLAT BOOK 130, PAGES 199 THROUGH 205,  
 OF THE PUBLIC RECORDS OF PALM BEACH COUNTY, FLORIDA,  
 TOGETHER WITH A PORTION OF SECTION 6, TOWNSHIP 43 SOUTH, RANGE 41 EAST,  
 CITY OF WESTLAKE, PALM BEACH COUNTY, FLORIDA.

DATE 3/01/2022  
 DRAWN BY AS  
 F.B./ PG. ELEC  
 SCALE AS SHOWN

JOB # 8272-4  
 SHT.NO.  
 5  
 OF 6 SHEETS

JOB # 8272-4  
 SHT.NO.  
 5  
 OF 6 SHEETS

