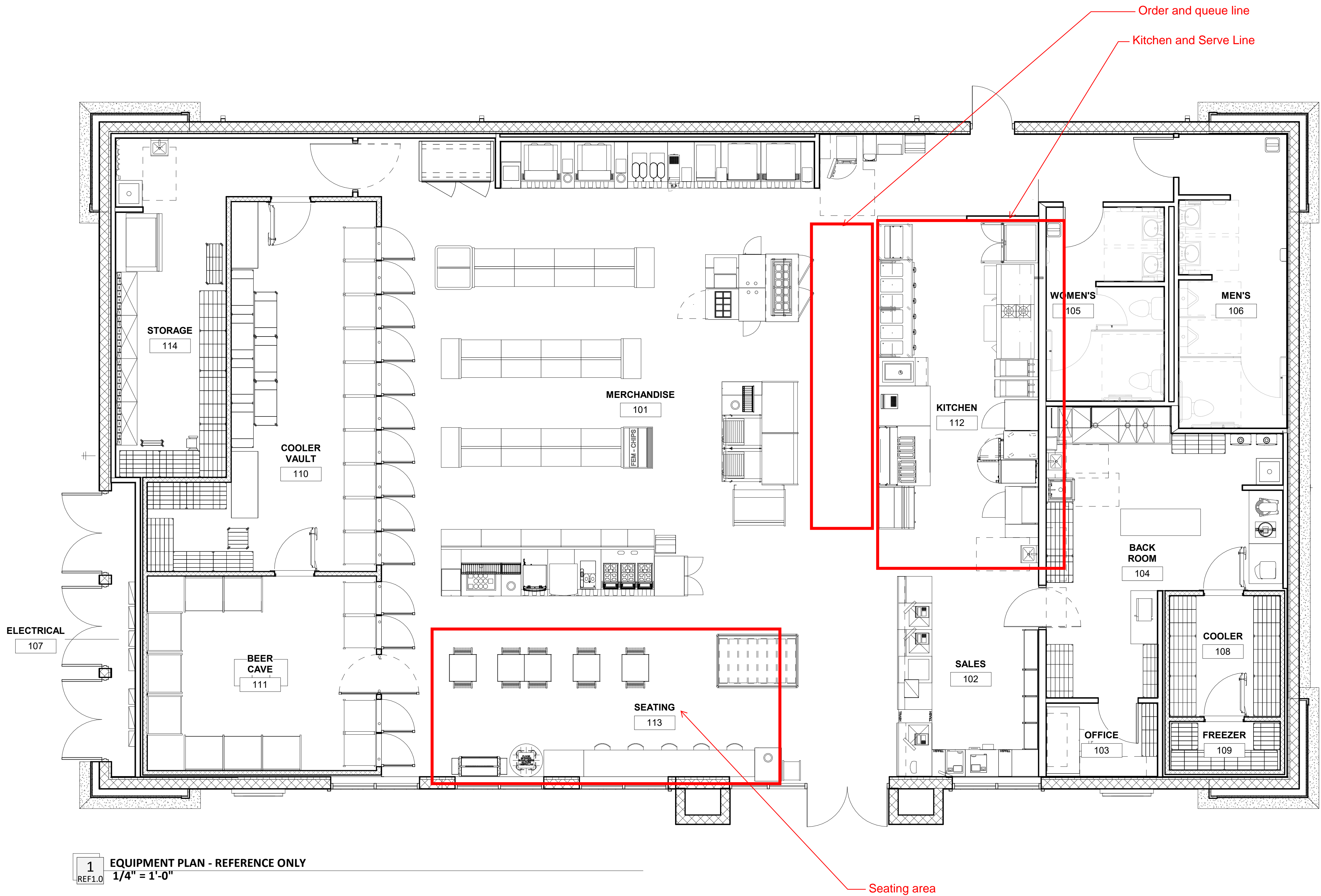


ROOM NO.	USE	USE CLASS	SIZE SQFT	SQFT/PERSON	PERSONS
101	MERCHANDISE	M	1683.45 SF	60.00 SF	29
102	SALES	M	182.68 SF	60.00 SF	4
103	OFFICE	B	45.86 SF	100.00 SF	1
104	BACK ROOM	M	294.48 SF	300.00 SF	1
105	WOMEN'S	M	PLUMBING FIXTURE COUNT; SHEET A1.5		
106	MEN'S	M	PLUMBING FIXTURE COUNT; SHEET A1.5		
107	ELECTRICAL	M	39.22 SF	0.00 SF	
108	COOLER	M	75.76 SF	300.00 SF	1
109	FREEZER	M	30.30 SF	300.00 SF	1
110	COOLER VAULT	M	345.20 SF	300.00 SF	2
111	BEER CAVE	M	251.45 SF	300.00 SF	1
112	KITCHEN	M	323.29 SF	200.00 SF	2
113	SEATING	M	225.26 SF	15.00 SF	16
114	STORAGE	M	252.10 SF	300.00 SF	1
					59



1 EQUIPMENT PLAN - REFERENCE ONLY
 REF1.0 1/4" = 1'-0"

REV.#	DATE	DESCRIPTION

PROTO:10-23-2019 (2019-02)

7-ELEVEN #41265
 16750 PERSIMMON BLVD. WEST
 WESTLAKE, FL 33470
VERDAD REAL ESTATE AND CONSTRUCTION SERVICES
 1211 SOUTH WHITE CHAPEL BLVD. - SOUTH LAKE, TX 76082



DEREK HAGERMAN
 1414 E. PRIMROSE ST., STE. 100
 SPRINGFIELD, MO 65804
 TEL: 877.297.2684
 www.botlstudio

Drawings and Specifications as instruments of service are and shall remain the property of the Architect. They are not to be used on other projects or extensions to this project except by agreement in writing and with appropriate compensation to the Architect.

Contractor is responsible for confirming and correcting dimensions at job site; the architect will not be responsible for construction means, methods, techniques, sequences or procedures, or for safety precautions and programs in connection with the project.

The seal and signature apply only to the document to which they are affixed and we expressly disclaim any responsibility for all other plans, specifications, estimates, reports or other documents or instruments relating to or intended to be used for any part or parts of the project.



JOB#: 19044
 DATE: 07/09/2020
 SHEET:

REF1.0

EQUIPMENT PLAN - REFERENCE ONLY