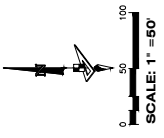


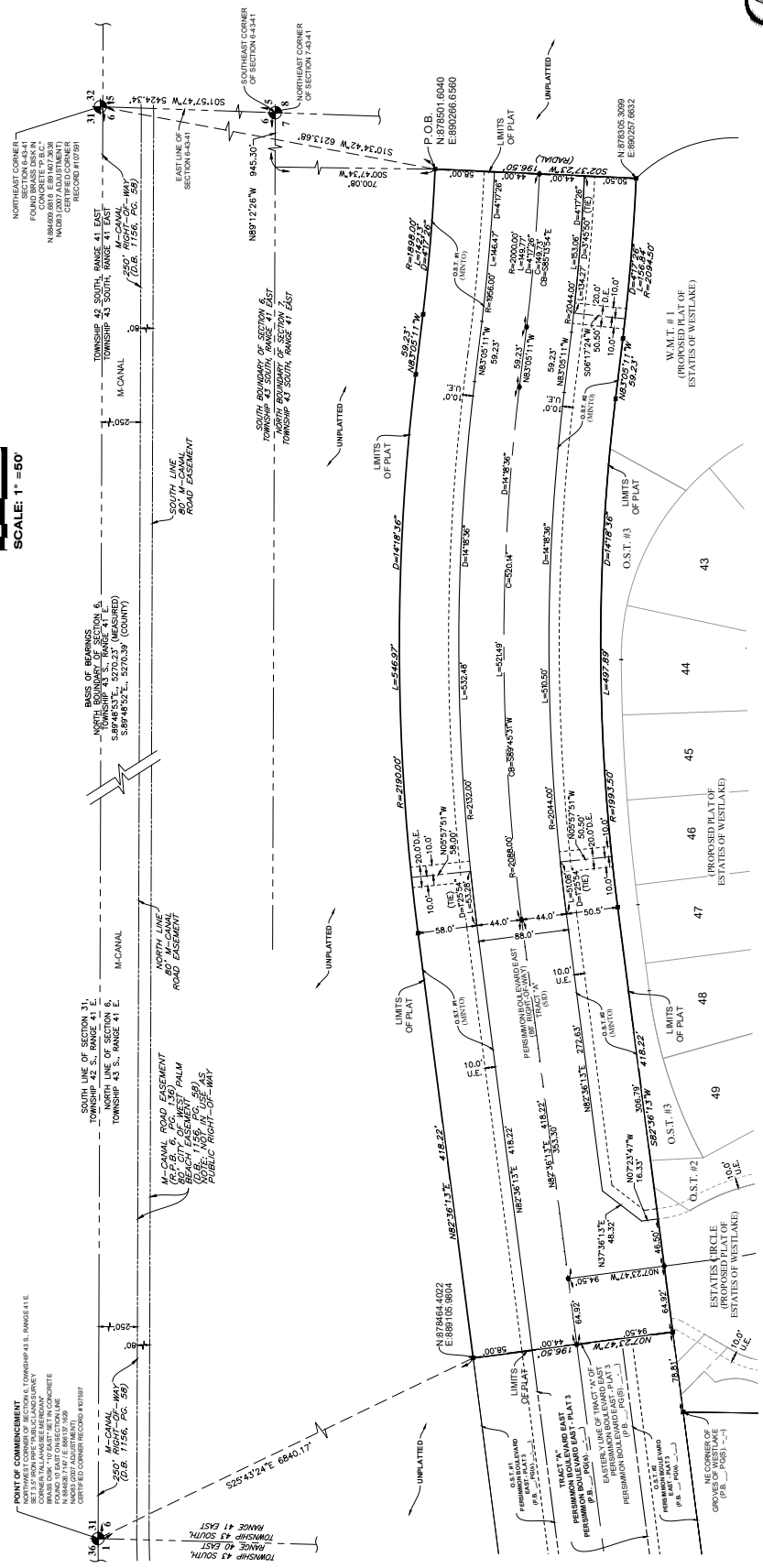
PERSIMMON BOULEVARD EAST - PLAT 4

BEING A PORTION OF SECTION 7, TOWNSHIP 43 SOUTH, RANGE 41 EAST, CITY OF WESTLAKE, PALM BEACH COUNTY, FLORIDA.

COORDINATES SHOWN HEREON ARE
 NAD 83
 DATUM IN ADJUSTMENT
 ZONE = FLORIDA EAST
 PROJECTION = TRANSVERSE MERCATOR
 ALL DISTANCES ARE GROUND
 PLAT BEARING = GRID BEARING
 QUARTER CORNERS ARE GENERATED
 FROM MEASURED VALUES



- LEGEND**
- P.O.B. POINT OF BEGINNING
 - P.O.C. POINT OF COMMENCEMENT
 - P.B. PLAT BOOK
 - D.B. DEED BOOK
 - P.G./P.G.D. PLAT/GROUND DISTRICT
 - W.M.T. WATER MANAGEMENT DISTRICT
 - G.S.T. OPEN SPACE TRACT
 - P.B.C. PALM BEACH COUNTY
 - U.E. UTILITY EASEMENT
 - M.A.L.E. MILEAGE ACCESS EASEMENT
 - 7-43-41 SECTION-TOWNSHIP-RANGE
- R RADIUS
 - L ARC LENGTH
 - D DELTA ANGLE
 - CB CHORD BEARING
 - C CHORD
 - S/O SPLIT-OF-WAY
 - S/LA SEWAGE IMPROVEMENT DISTRICT
 - PRM PERMANENT REFERENCE MONUMENT
 - CP CONCRETE PERMANENT MONUMENT
 - ALUM ALUMINUM DISK
 - CONC CONCRETE MONUMENT WITH 2" ALUMINUM DISK STAMPED FROM LB 7768*



NOTE: EASEMENTS, BUFFERS AND OTHER
 NOT LABELLED DIMENSIONS OF A PLAT ARE
 THE NEAREST FOOT (E. UTILITY EASEMENT)
 EXTENDED TO THE NEAREST HUNDRETH OF A
 FOOT (M. W.M.T. U.S. 173).

BASIS OF BEARINGS
 BEARINGS SHOWN HEREON ARE BASED ON THE NORTH
 BOUNDARY OF SECTION 6, TOWNSHIP 43 SOUTH, RANGE 41 EAST,
 PALM BEACH COUNTY, FLORIDA, AS SHOWN HEREON, REFER TO THE STATE PLANE COORDINATE
 SYSTEM OF FLORIDA. SAID BASIS OF BEARINGS IS THE SAME
 AS THE NORTH AMERICAN DATUM OF 1983 (NAD 83) - 70%.

NOTE:
 THIS PLAT, AS RECORDED IN ITS ORIGINAL FORM, IS THE ORIGINAL
 RECORD OF THIS PLAT. ANY REVISIONS TO THIS PLAT
 WILL, IN CIRCUMSTANCES BE SUPPLANTED IN AUTHORITY BY
 THIS PLAT. ANY REVISIONS TO THIS PLAT WILL BE
 BE ADDITIONAL RESTRICTIONS THAT ARE NOT RECORDED ON THIS
 PLAT THAT MAY BE FOUND IN THE PUBLIC RECORDS OF THIS
 COUNTY.