

NOTES

TREES SHOWN ON THIS PLAN ARE FOR GRAPHIC REPRESENTATION ONLY. TREE SPACING IS BASED ON SEMINOLE IMPROVEMENT DISTRICT (S.I.D.) STREETSCAPE STANDARDS AND THE TREES SHOWN ON THESE PLANS ATTEMPT TO ACCOMPLISH THAT SPACING WHILE MAINTAINING THE REQUIRED SETBACKS FROM S.I.D. UTILITIES. TREES MAY BE FIELD ADJUSTED TO AVOID CONFLICTS WITH DRIVEWAYS AND UNDERGROUND UTILITIES. IN ANY CASE THE TREES SHALL BE LOCATED IN THE FIELD IN ACCORDANCE WITH THE PLANTING DETAILS SHOW HEREIN.

ADDITIONALLY, TREES ARE TO BE INSTALLED WITH A TEN FOOT (10') SEPARATION FROM ANY WATER OR SEWER MAIN AND/OR SERVICE, HYDRANTS AND LIFT STATIONS. IF A TEN FOOT (10') SEPARATION CANNOT BE ACHIEVED, THE TREE SHALL BE INSTALLED WITH A ROOT BARRIER SYSTEM. REFER TO THE "ROOT BARRIER" DETAIL FOR INSTALLATION REQUIREMENTS. HOWEVER, IN NO CASE SHALL TREE ENCROACH INTO A S.I.D.U.E. WITHOUT PRIOR S.I.D. APPROVAL AND ONLY SOD CAN BE INSTALLED WITHIN 7.5' OF A FIRE HYDRANT UNLESS OTHERWISE APPROVED.

PROJECT TEAM

PROPERTY OWNER
UHS OF DELAWARE, INC.
367 SOUTH GULPH ROAD
KING OF PRUSSIA, PA 19406
PHONE: 610-382-1006

SITE PLANNER
COTLEUR & HEARING
367 SOUTH GULPH ROAD, SUITE 1
JUPITER, FLORIDA 33458
PHONE: 561-747-6336
FAX: 561-747-1377

SURVEYOR
GEOPOINT SURVEYING INC.
1405 E. 5TH AVENUE
TAMPA, FLORIDA 33605
PHONE: 813-248-8286
FAX: 813-248-2266

TRAFFIC ENGINEER
PINDER TROUTMAN CONSULTING, INC.
2005 VISTA PARKWAY, SUITE 111
WEST PALM BEACH, FLORIDA
PHONE: 561-296-8988
FAX: 561-684-6336

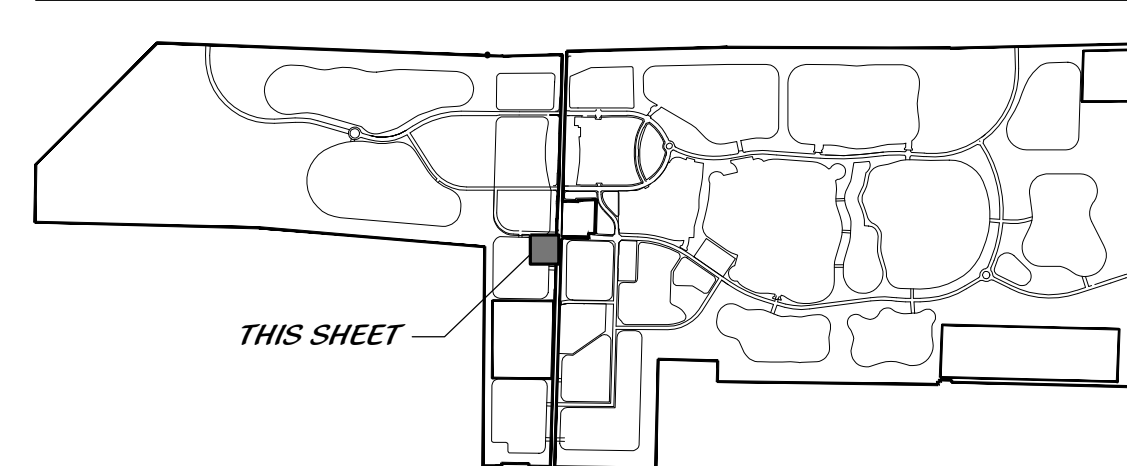
ENVIRONMENTAL CONSULTANT
EW CONSULTANTS, INC.
1000 SE MONTEREY COMMONS BLVD, SUITE 208
STUART, FLORIDA 34996
PHONE: 772-287-8771
MOBILE: 772-485-1700

CIVIL ENGINEER
SIMMONS & WHITE
5601 CORPORATE WAY, SUITE 200
WEST PALM BEACH, FLORIDA 33407
PHONE: 561-478-7848
FAX: 561-478-3738

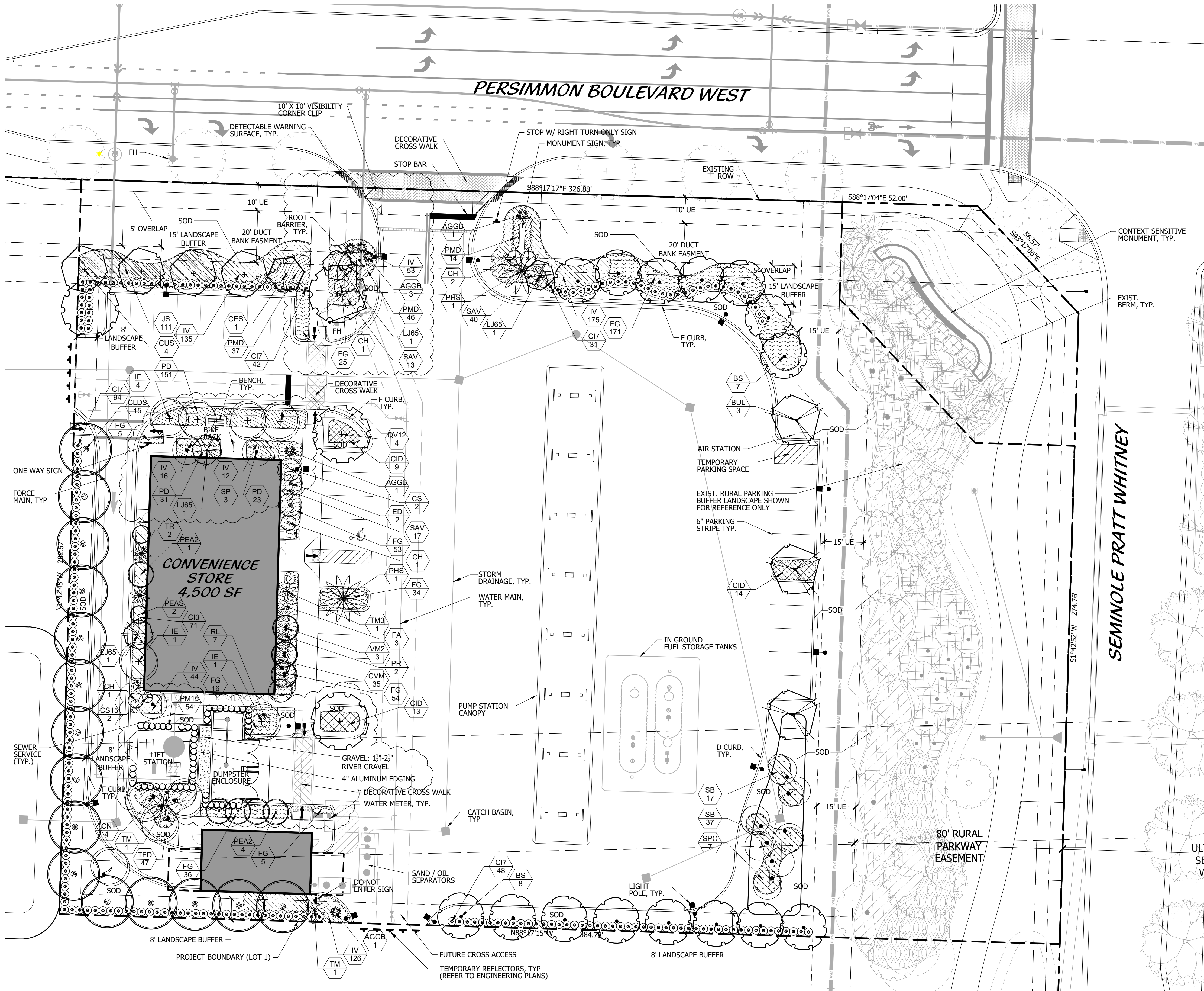
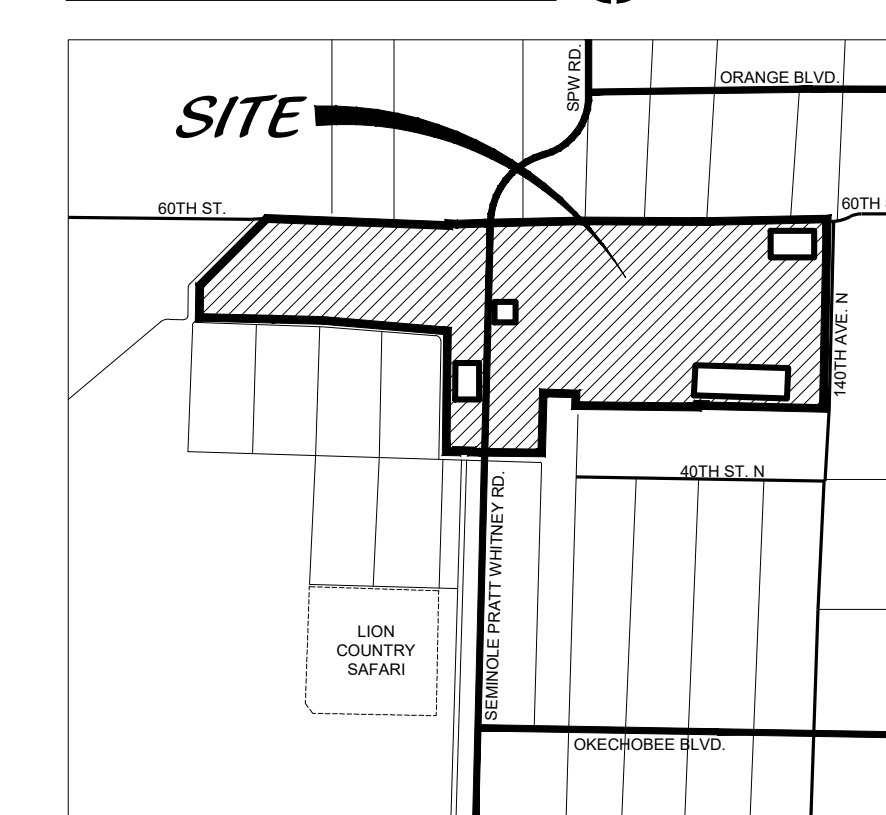
LEGEND

- SID: SEMINOLE IMPROVEMENT DISTRICT
- ROW: RIGHT OF WAY
- AC: ACRES
- UE: UTILITY EASEMENT
- DE: DRIANGE EASEMENT
- LAE: LIMITED ACCESS EASEMENT
- TTD: TRADITIONAL TOWN DEVELOPMENT
- ESMT: EASEMENT
- CL: CENTER LINE
- SW: SIDEWALK
- PBC: PALM BEACH COUNTY
- LME: LAKE MAINTENANCE EASEMENT
- WMT: WATER MANAGEMENT TRACT

KEY MAP



LOCATION MAP



LANDSCAPE DATA

GROSS AFFECTED AREA 107,902 SF

CATEGORY	CODE	REQ.	PROV.
INTERIOR LANDSCAPE (TABLE 7.C.3)			
TOTAL TREES FOR GROSS SITE AREA	1/2000 SF	54	59
TOTAL SHRUBS FOR GROSS SITE AREA	3/2000 SF	162	2124
FOUNDATION PLANTING: FRONT FAÇADE - 90 LF (TABLE 7.C.3)			
TREES - (1/20 LF OF 40% FAÇADE LENGTH)	1/20 OF 36 LF	2	2
SHRUBS - (8' WIDTH PLANTING AREA FOR 40% FAÇADE LENGTH)	1/10 OF 288 SF	29	48
FOUNDATION PLANTING - SIDE FAÇADES - 100 LF (50 EACH) (TABLE 7.C.3)			
TREES - (1/20 LF OF 40% FAÇADE LENGTH)	1/20 OF 40 LF	2	2
SHRUBS - (5' WIDTH PLANTING AREA FOR 40% FAÇADE LENGTH)	1/10 OF 200 SF	20	64
SIGNAGE PLANTING (ARTICLE 7. CHAP C. SECT 3.C)			
MONUMENT (1 SIGN)	1/10 SF	12	43
SHRUBS - 3' WIDE PLANTING AREA - 117 SF			
NORTH - 278 LF (ARTICLE 7. CHAP D. SECT 4)			
TREES **	1/25 LF	11	12
GROUND COVER (6" HT.) ***	2/1 LF	556	531
SMALL SHRUBS (18" HT.) ***	1/2 LF	139	111
MEDIUM SHRUBS (24" HT.) ***	1/4 LF	70	144
LARGE SHRUBS (36" HT.) ***	1/4 LF	70	76
EAST BUFFER - 283 LF (ARTICLE 7. CHAP D. SECT 4)			
TREES *	1/25 LF	11	11
CONTINUOUS HEDGE	3' HT.	YES	YES
SOUTH - 290 LF (ARTICLE 7. CHAP D. SECT 4)			
TREES	1/25 LF	12	13
CONTINUOUS HEDGE	3' HT.	YES	YES
WEST BUFFER - 287 LF (ARTICLE 7. CHAP C. SECT 2)			
TREES	1/25 LF	11	11
CONTINUOUS HEDGE	3' HT.	YES	YES
OFF STREET PARKING (ARTICLE 7. CHAP C. SECT 4)			
LANDSCAPE ISLAND TREES	1/ISLAND	8	8
TERMINAL ISLAND 2' HEDGE	60% COVERAGE	YES	YES
TREE SPECIES MIX (TABLE 7.D.2.C)			
MIN. NO. OF TREE SPECIES	54 TREES	4	7
PLANT SPECIES (ARTICLE 7. CHAP D. SECT 1)			
NATIVE TREE SPECIES	60% OF REQ. MIN.	34	36
NATIVE SHRUB SPECIES	60% OF REQ. MIN.	634	1121

* NOTE: EAST BUFFER LANDSCAPE REQUIREMENTS ARE SATISFIED BY EXISTING LANDSCAPE BUFFER.
** CANOPY TREE SUBSTITUTE IS 3:1 RATIO. EXCEPTION FOR ROYAL, BISMARCK, PHOENIX, AND CANARY. (7.D.2B) [ORD. 2018-002]
*** THE 6 EXCESS LARGE SHRUBS AND 74 EXCESS MEDIUM SHRUBS WILL BE USED TO COVER THE DEFICIT OF 53 SMALL SHRUBS AND GROUNDCOVERS

NOTE:
TREES SHALL BE TRIMMED IN ACCORDANCE WITH ISA STANDARDS BY A CERTIFIED ARBORIST, IN PERPETUITY, TO PROMOTE CLEAR AREAS FOR LIGHT FIXTURES IN WHICH THEY ARE INTENDED TO ILLUMINATE

TABLE OF CONTENTS

Landscape Plan	LP1
Landscape Specifications & Details	LP2

DRO AMENDMENTS ZONING STAMP

Cotleur & Hearing
Landscape Architects
Land Planners
Environmental Consultants
1934 Commerce Lane
Suite 1
Jupiter, Florida 33458
561.747.6336 · Fax 747.1377
www.cotleurhearing.com
Lic# LC-C000239

**MINTO WESTLAKE
7-ELEVEN 2.0
LANDSCAPE PLAN**
City of Westlake, Florida

DESIGNED	DEH
DRAWN	JAE
APPROVED	DEH
JOB NUMBER	19-0703
DATE	08-23-19
REVISIONS	08-11-19
	09-30-19
	01-27-20
	02-17-20
	03-20-20

