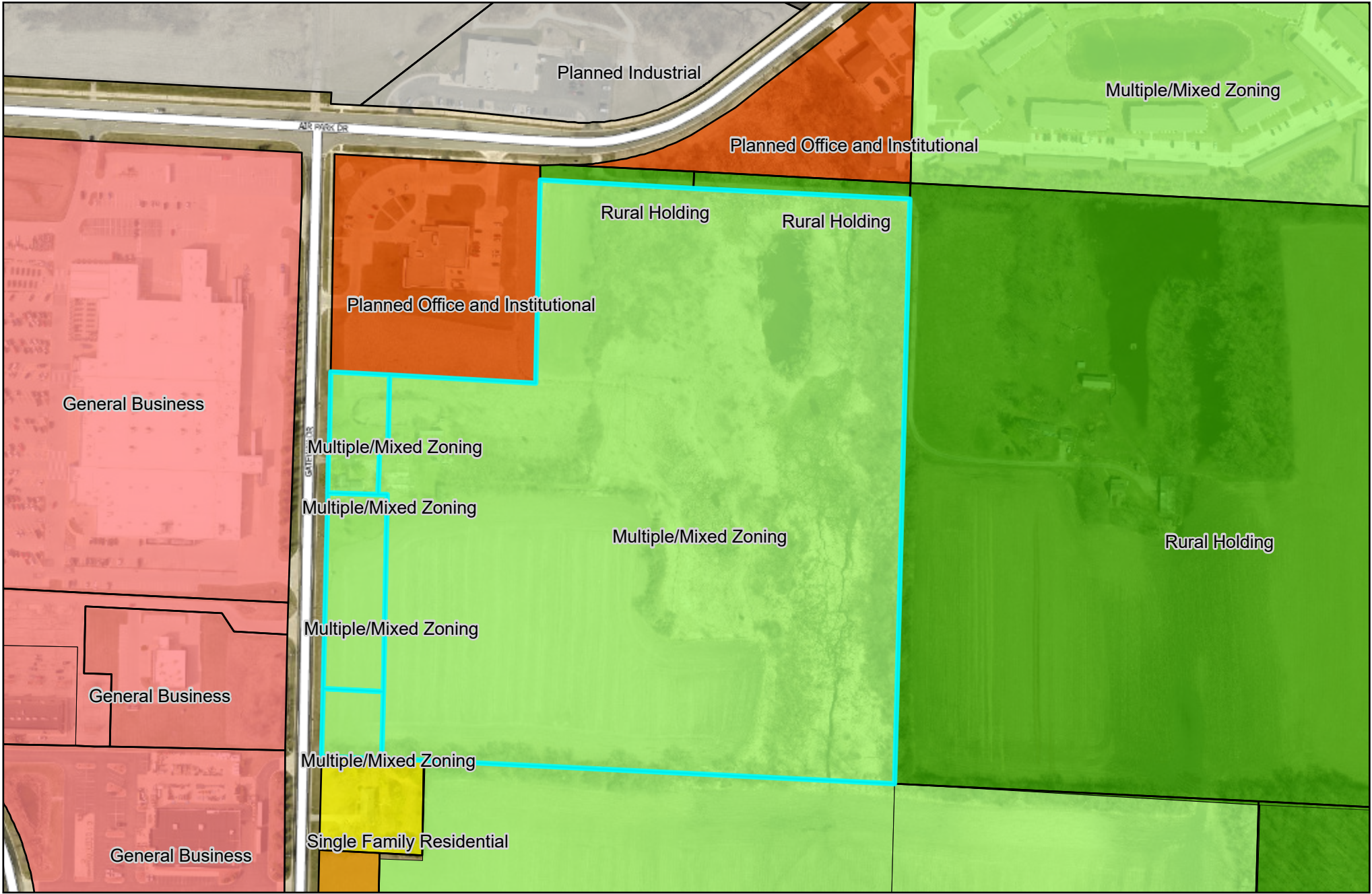


1911 Gateway Dr - Surrounding Zoning



	City Boundary		Multi-Family Residential-8		Neighborhood Office		Planned Industrial		Unknown
	Parcels Lines		Multi-Family Residential-10		Neighborhood Business		General Industrial		
Base Zoning									
	Single-Family Residential-4		Senior Residential		Planned Business		Heavy Industrial		Conditional Use
	Two-Family Residential-6		Rural Holding		General Business		Multiple Zoning		
			Planned Office And Institutional		Central Business District				