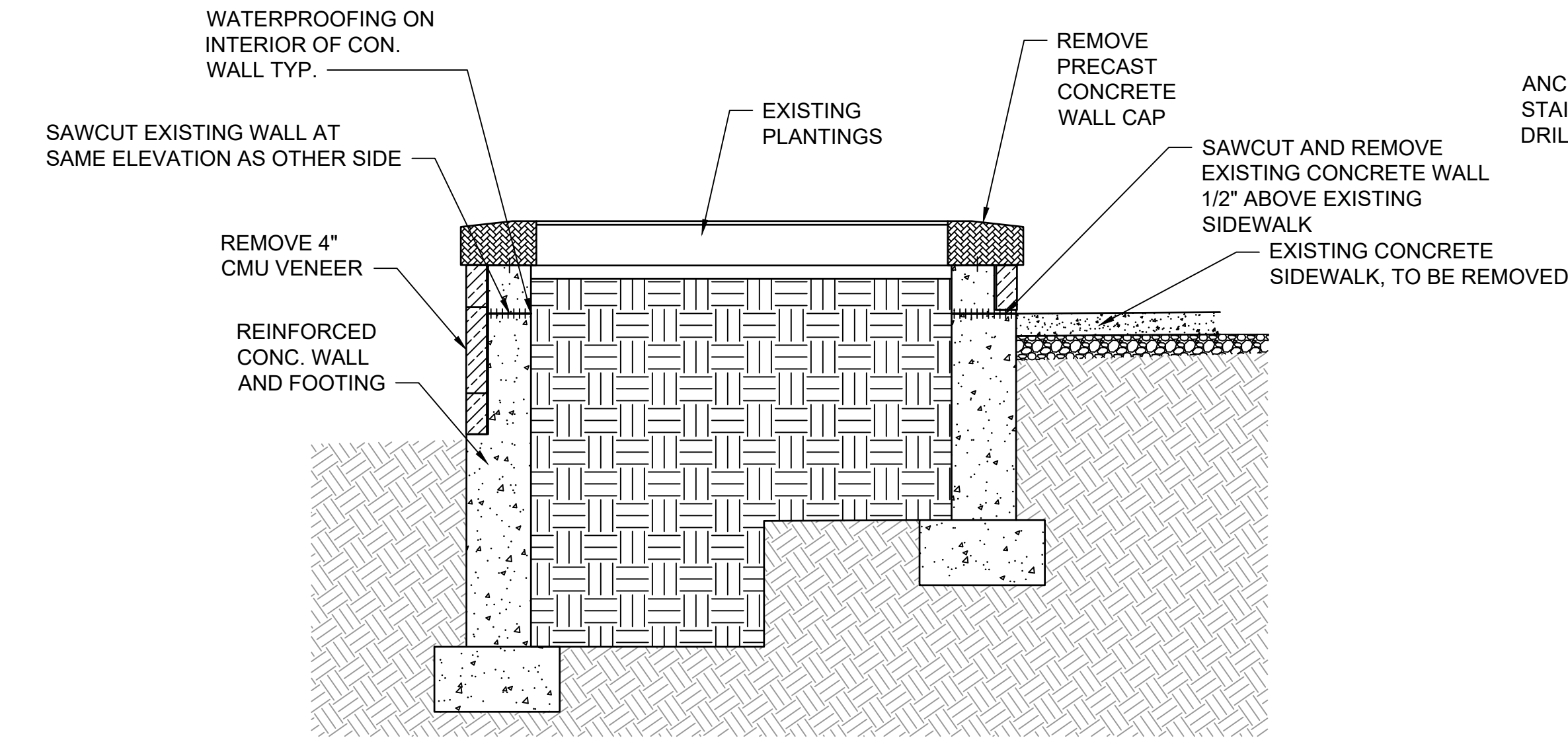
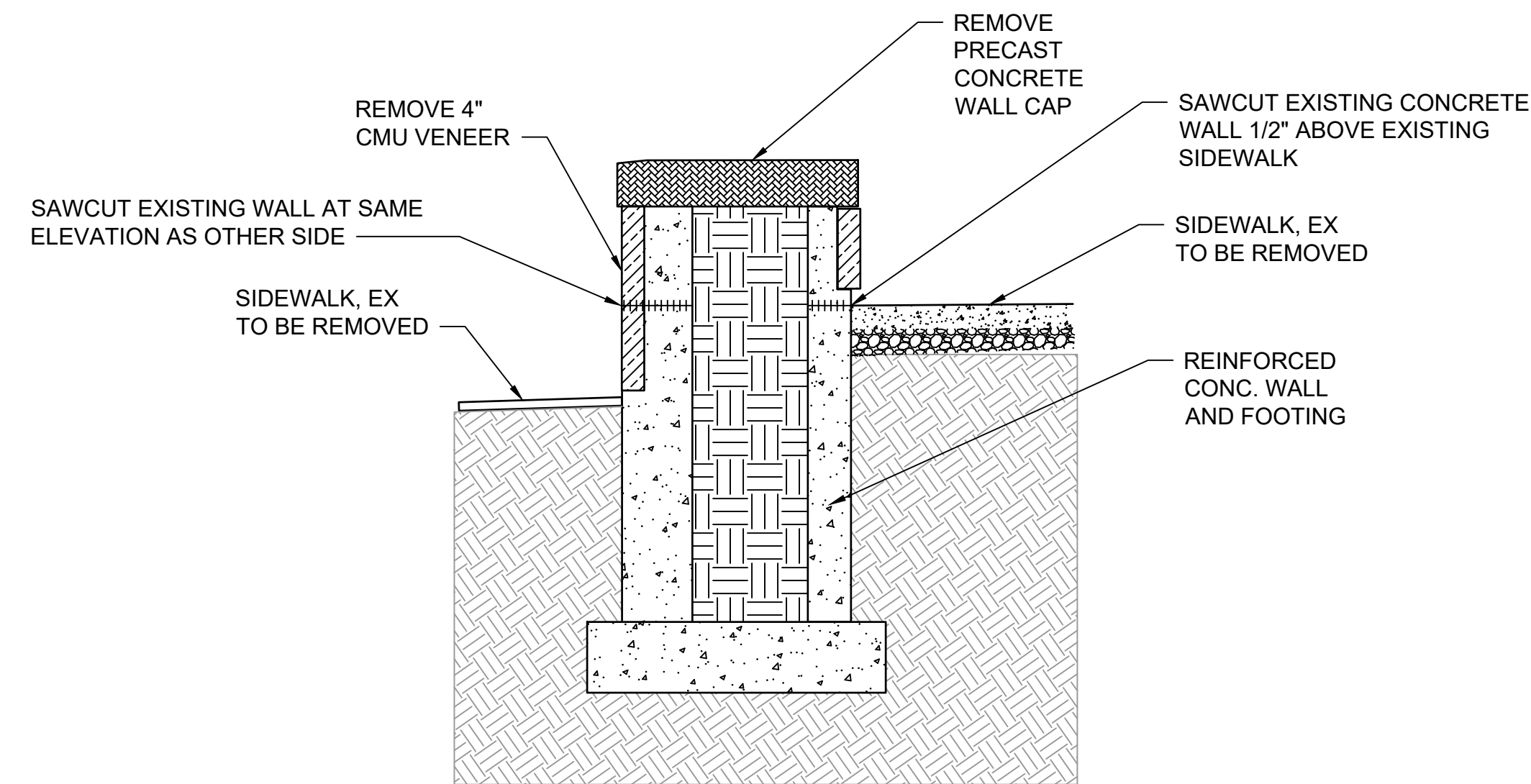


8/18/2022 10:18:28 PM

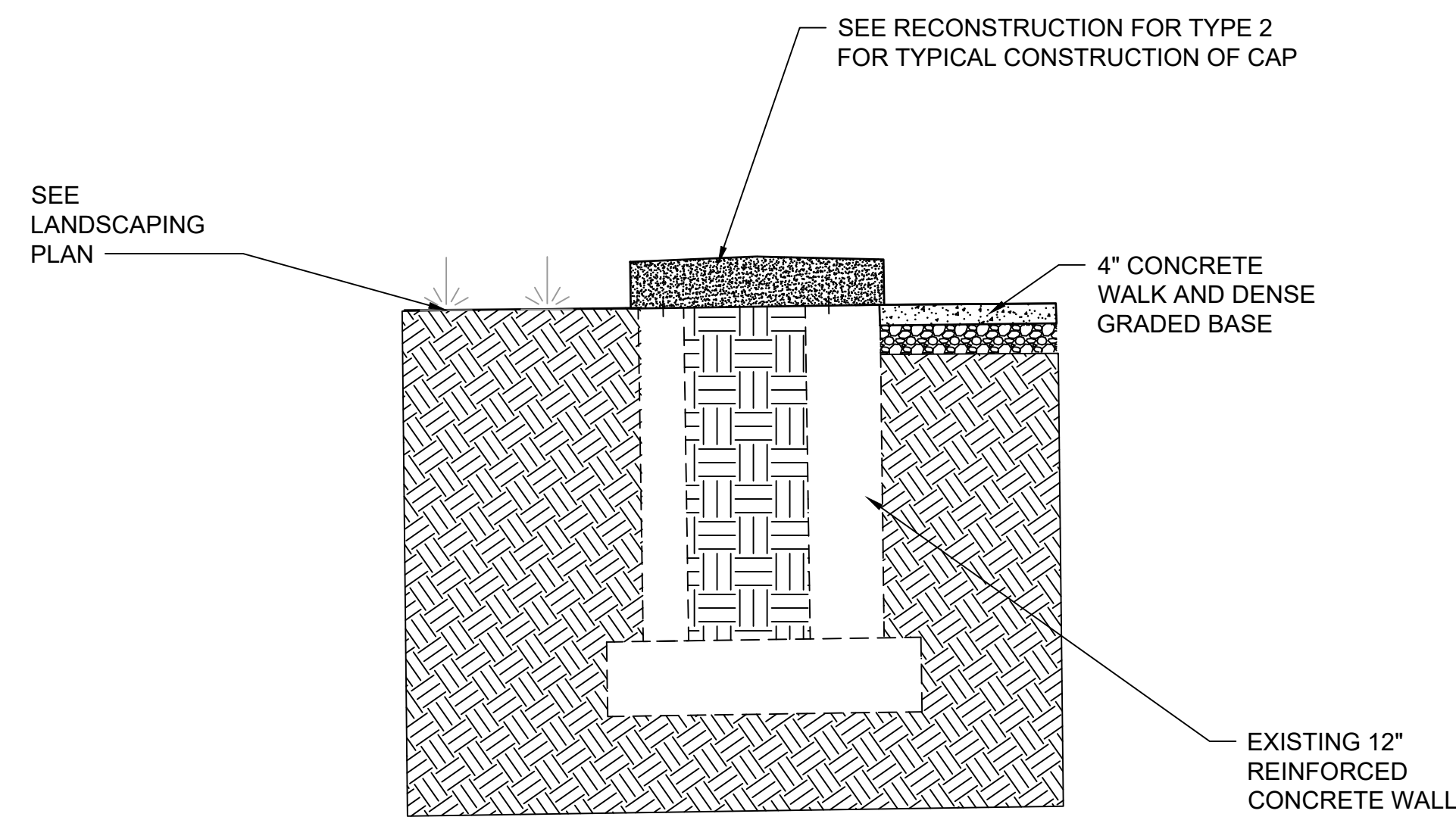
DRAWN BY: —



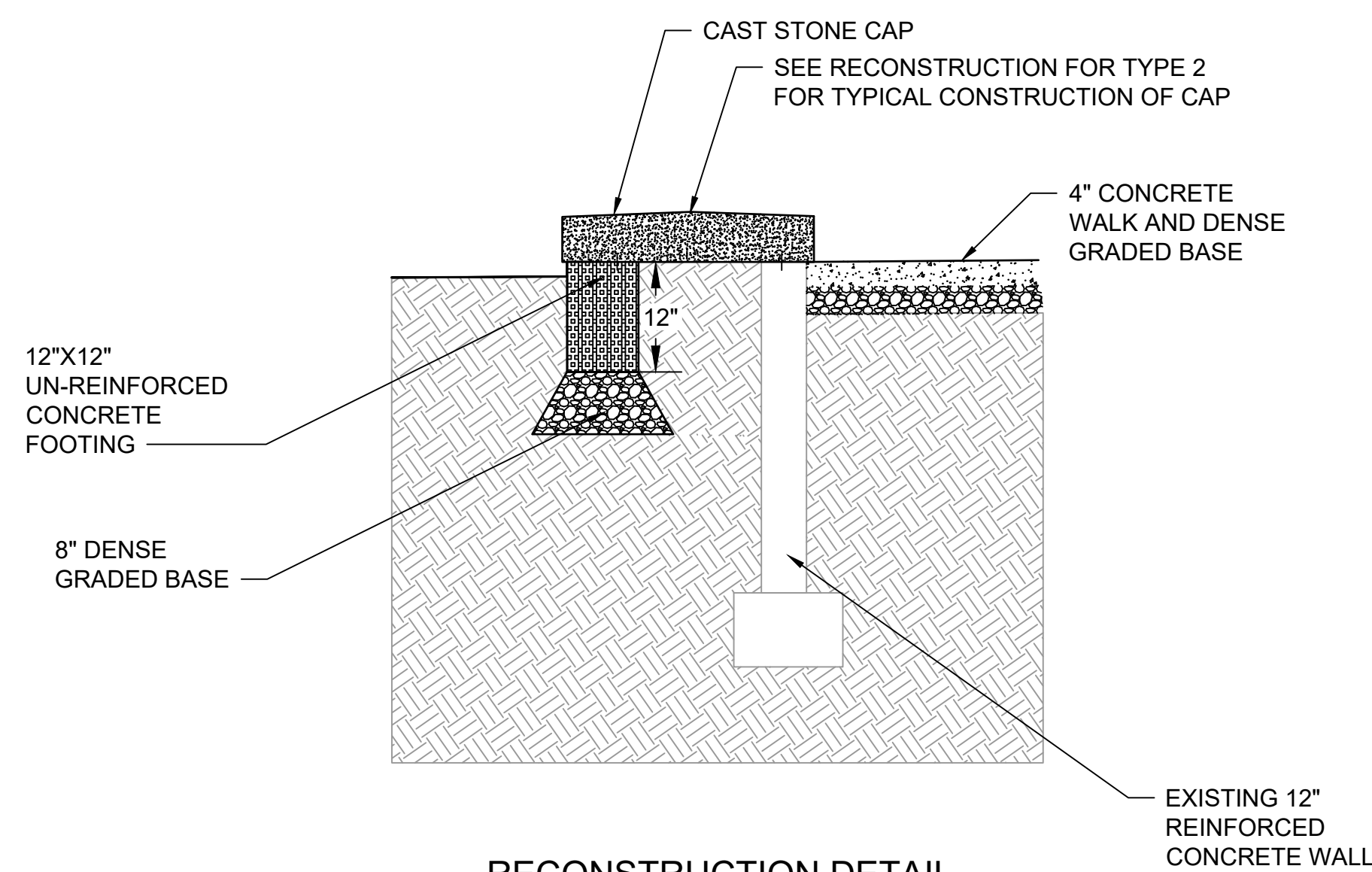
EXISTING AND REMOVAL DETAIL
LANDSCAPING PLANTER TYPE 1
NO SCALE



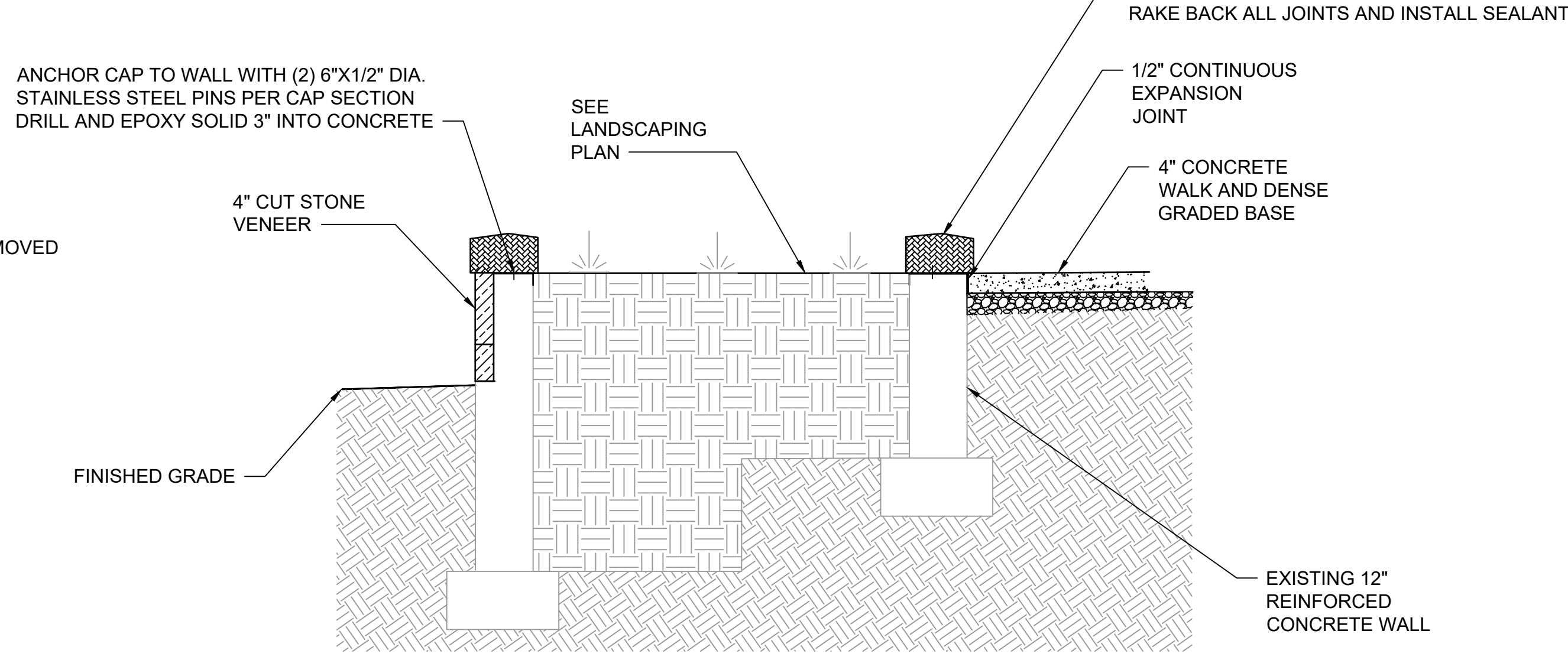
EXISTING AND REMOVAL DETAIL
LANDSCAPING PLANTER TYPE 2
NO SCALE



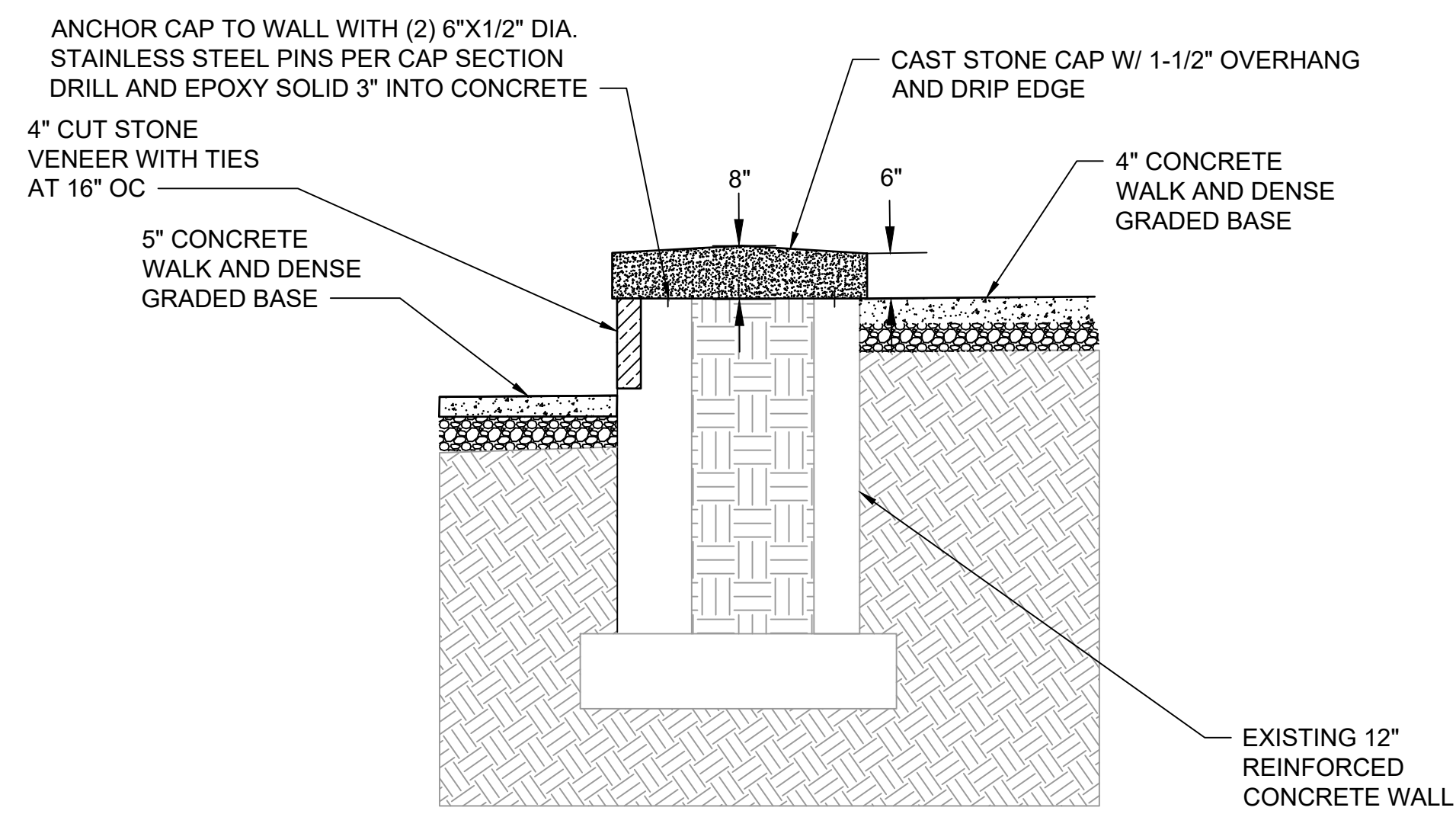
RECONSTRUCTION DETAIL
LANDSCAPING PLANTER RECONSTRUCTION TYPE 3
NO SCALE



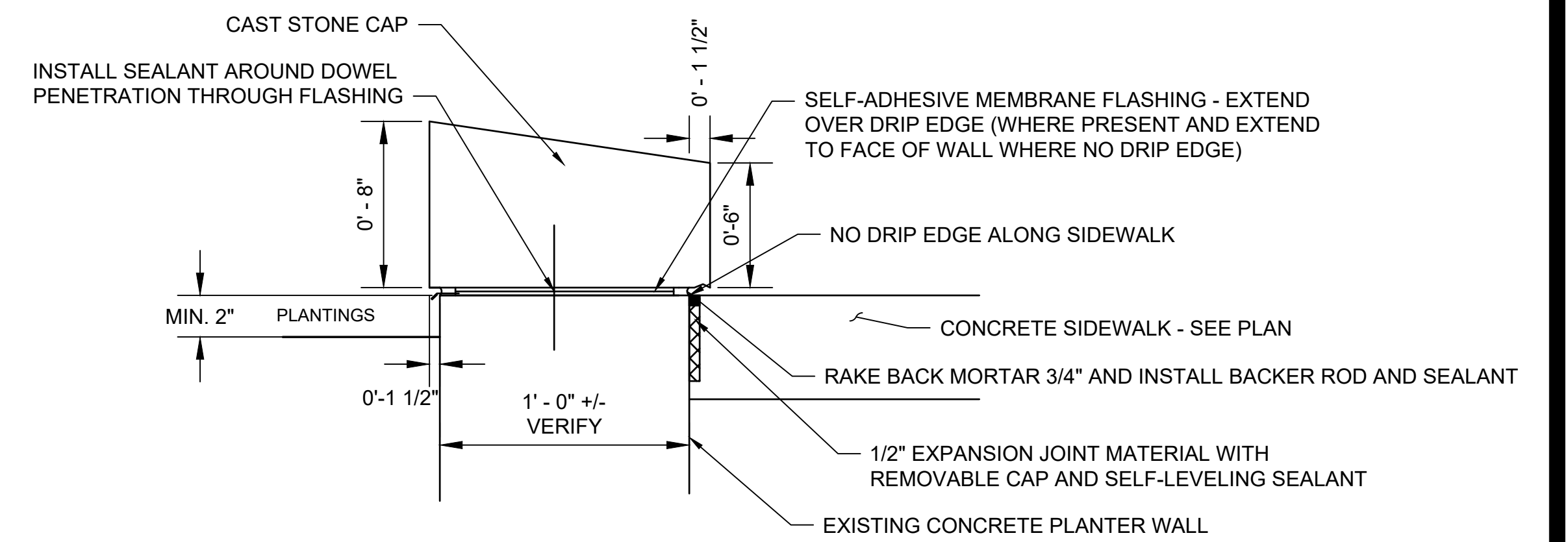
RECONSTRUCTION DETAIL
LANDSCAPING PLANTER RECONSTRUCTION TYPE 4
NO SCALE



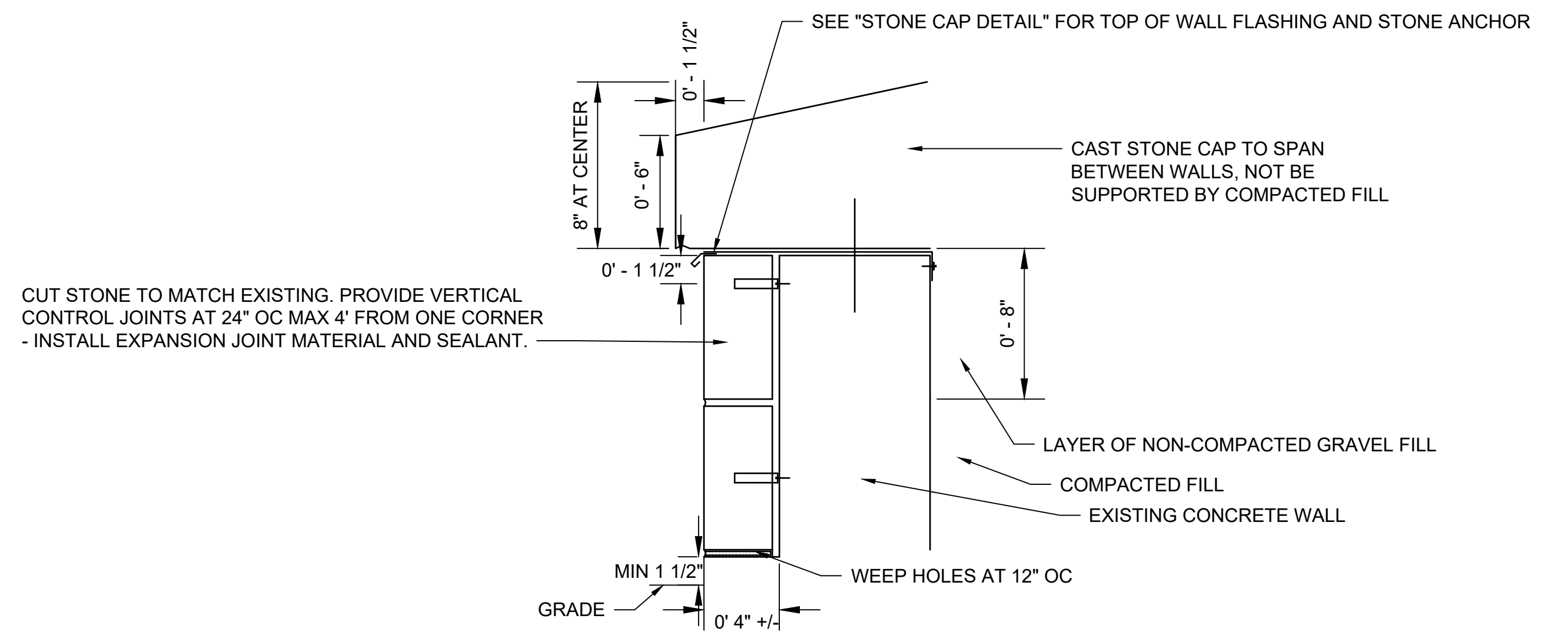
RECONSTRUCTION DETAIL
LANDSCAPING PLANTER RECONSTRUCTION TYPE 1
NO SCALE



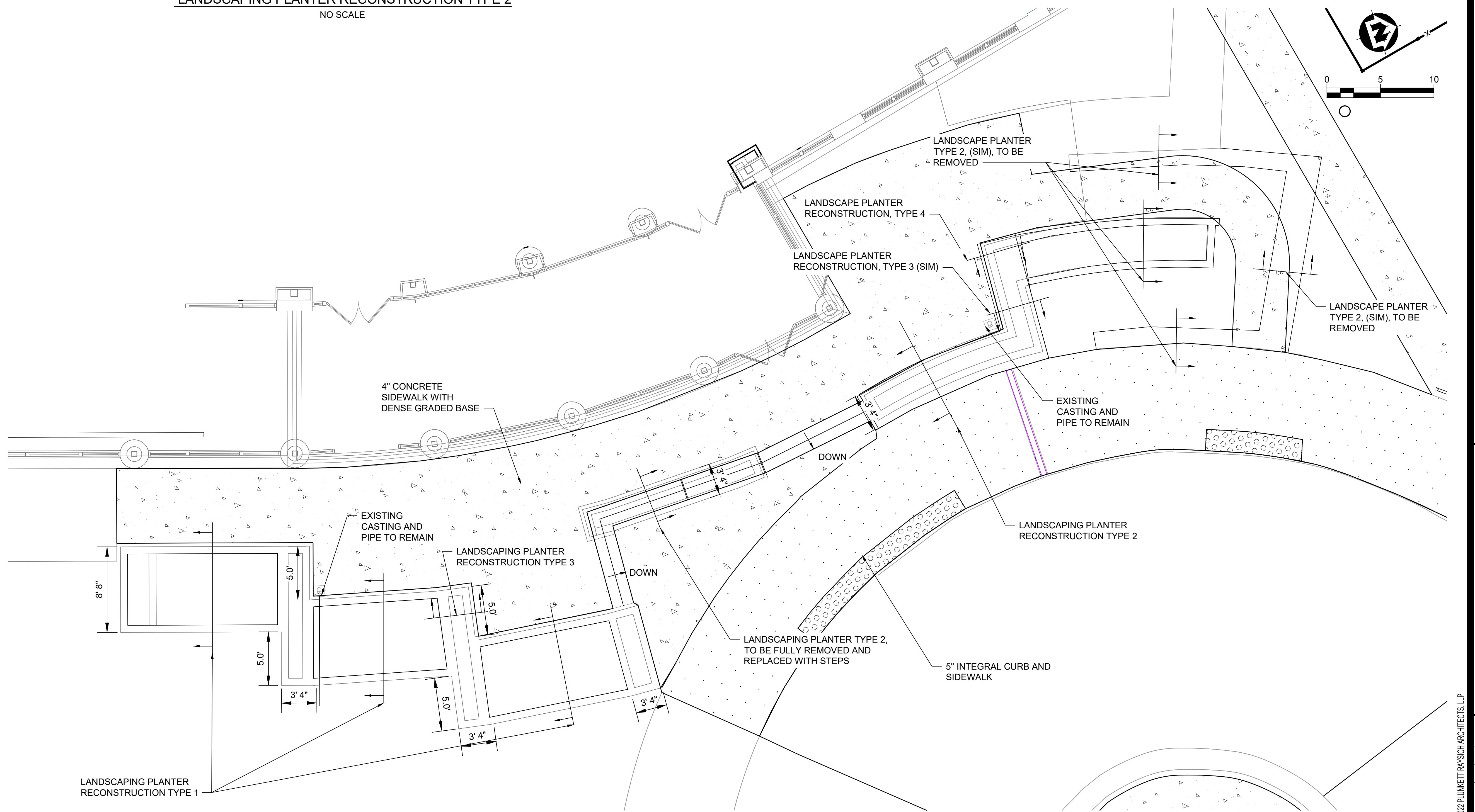
RECONSTRUCTION DETAIL
LANDSCAPING PLANTER RECONSTRUCTION TYPE 2
NO SCALE



STONE WALL CAP DETAIL
NO SCALE



STONE CAP DETAIL AT STONE VENEER
NO SCALE



© 2022 PLUNKETT RAYSICH ARCHITECTS, LLP

CONSTRUCTION SET

DATE: 08-19-22

JOB NO: 220040-01

SHEET NO:

L501

PLANTER DETAILS

GWCHF
WATERTOWN SOCIAL INNOVATION HUB
600 HOFFMANN DRIVE, WATERTOWN, WI 53094

ENGINEERING DESIGN BY
MSA
(608) 982-2486 • www.msa-pe.com

prad
PLUNKETT RAYSICH
ARCHITECTS, LLP

209 north water street, milwaukee, wisconsin 53204 414.339.3900
2310 crossroads drive, suite 200, madison, wisconsin 53718 608.248.9900
1900 main street, suite 300, baraboo, wisconsin 53516 608.444.8845
311 canyon view dr., lake, in 46010 773.253.9900