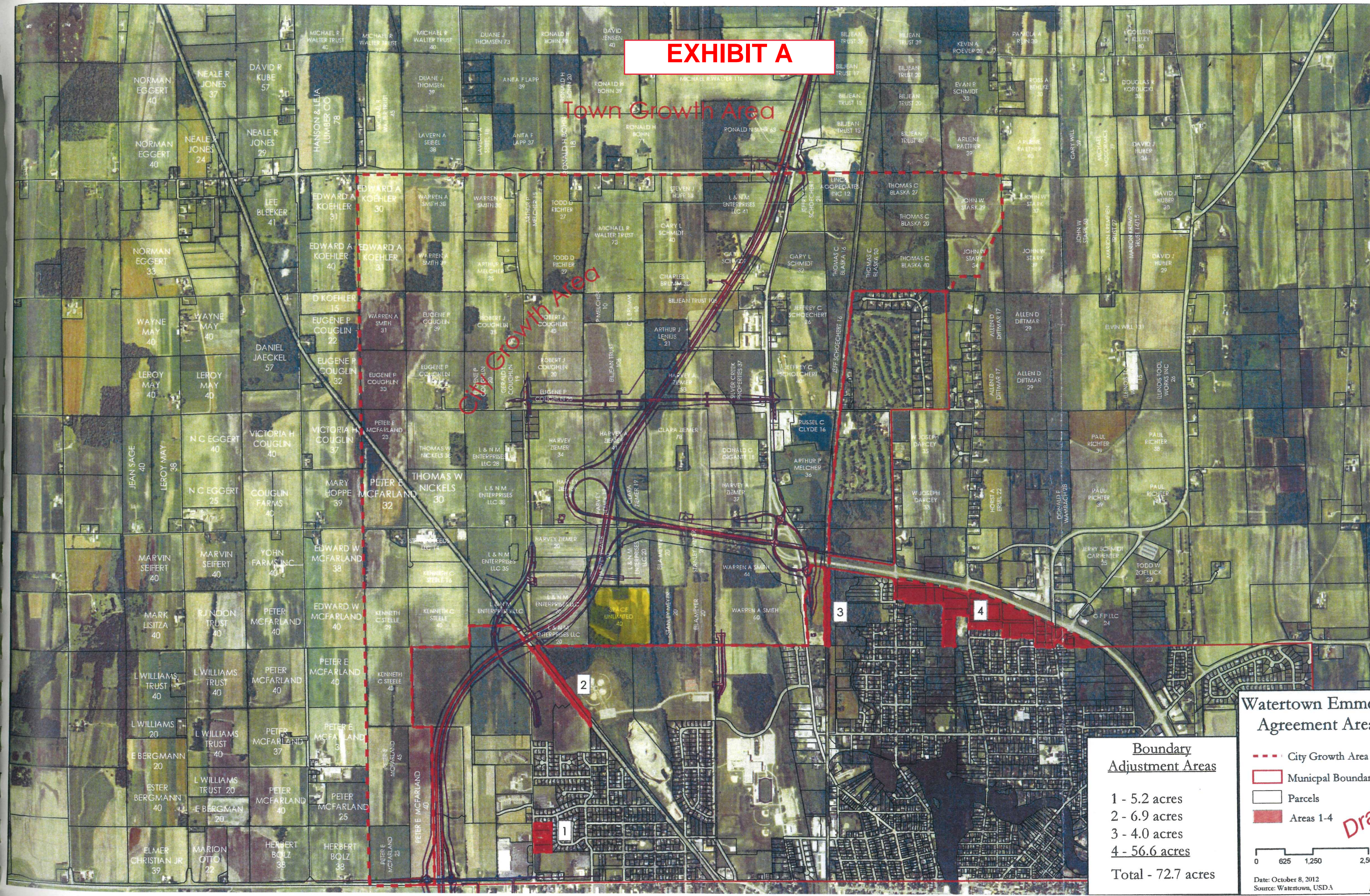


EXHIBIT A

Town Growth Area

City Growth Area



Watertown Emmett Agreement Area

Boundary Adjustment Areas

- 1 - 5.2 acres
- 2 - 6.9 acres
- 3 - 4.0 acres
- 4 - 56.6 acres

Total - 72.7 acres

- City Growth Area
- Municipal Boundary
- Parcels
- Areas 1-4

0 625 1,250 2,500 Feet

Date: October 8, 2012
Source: Watertown, USD.A

Draft