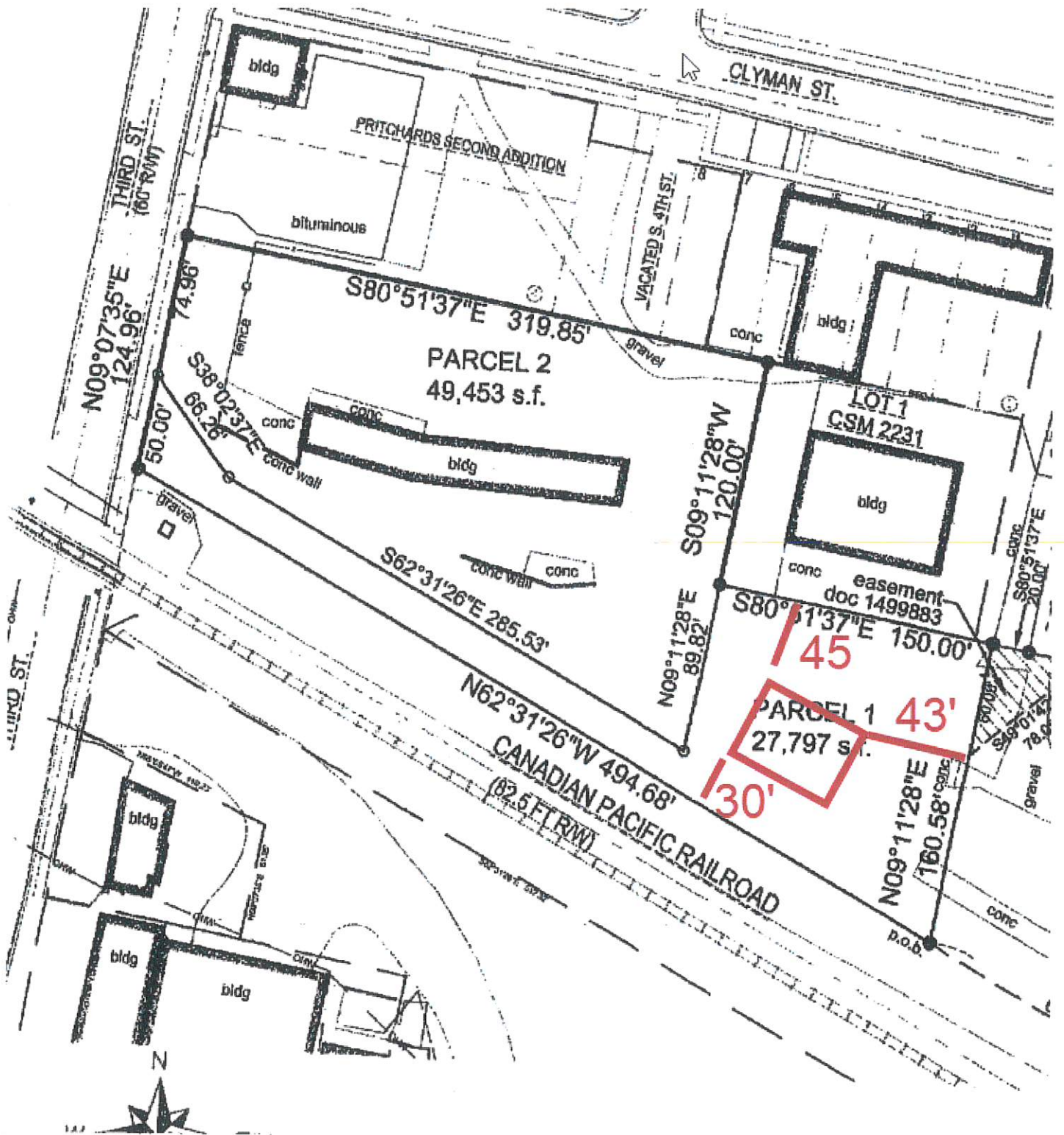


1018 South Fifth Street **plan**

To provide a location for new businesses in the City of Watertown we plan on building a 4,980 square foot commercial building to be used for contractor suites.

In addition to adding taxable value to the vacant general industrial land we believe this is the best use for this parcel which is located adjacent to a rail line.

LOEB & COMPANY, LLP



Cheers,
 Brian Bark

Brian Bark | Sales Consultant
 (920)261-9151 o | (920) 450-5584 m

1018 S Fifth Street

Landscape surface ratio

Total square footage of parcel 27,797

Building size 4,980

Pavement 1,200

21,617

UNPAVED 78%

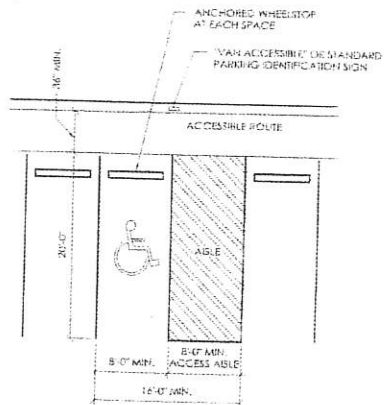
6,180 square foot 22% paved

1018 S 5th

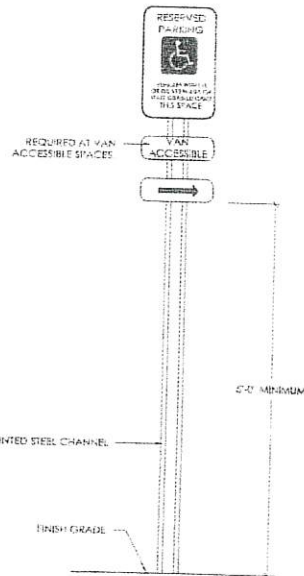


BUILDING LOCATION PLAN

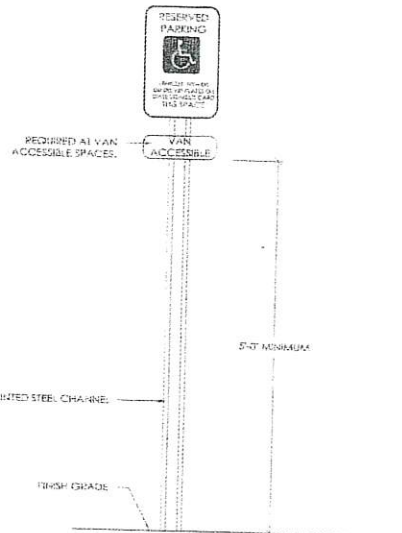
SCALE: 1" = 20'



ACCESSIBLE PARKING SPACE DETAIL
SEE NOTE #15



ACCESSIBLE PARKING SIGN ◆



ACCESSIBLE PARKING SIGN ◆

ONLY PARKING STALLS
PLANNED.

Ruth Mack

From: Dennis Hendricks <dhendricks.hse@gmail.com>
Sent: Monday, April 13, 2026 11:27 AM
To: Ruth Mack
Subject: New Building Exterior Lighting

Ruth -

We are looking to install 60W LED photo eye controlled wall packs.
The lighting would reach out around 20-25' from the building w/ a mounting height of 14'

Let me know if you need anything else.

Thanks

Dennis Hendricks

Hendricks Electric, LLC

O: 920.206.1898 / 262.560.4855

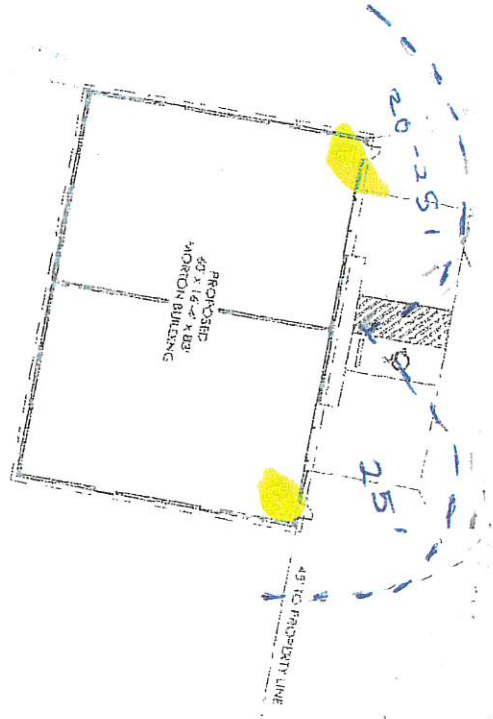
Mobile: 920.988.5753

dhendricks.hse@gmail.com

1018 S 5th

BUILDING LOCATION PLAN

1" = 25'



1018 S 5th