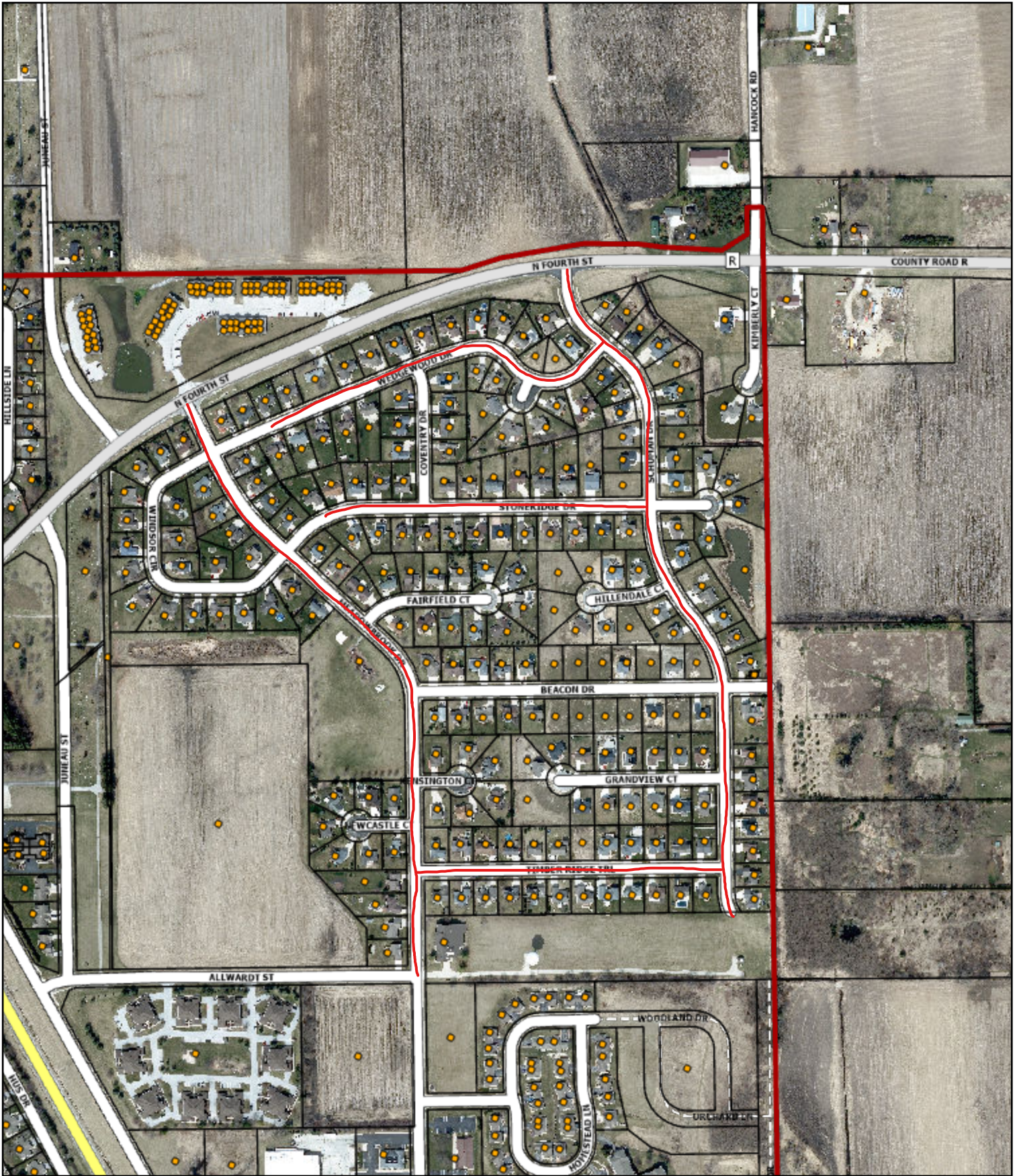







2026 Sidewalk Repair Program



	Municipal Boundary		Common Areas
	Parcels Boundaries		Addresses

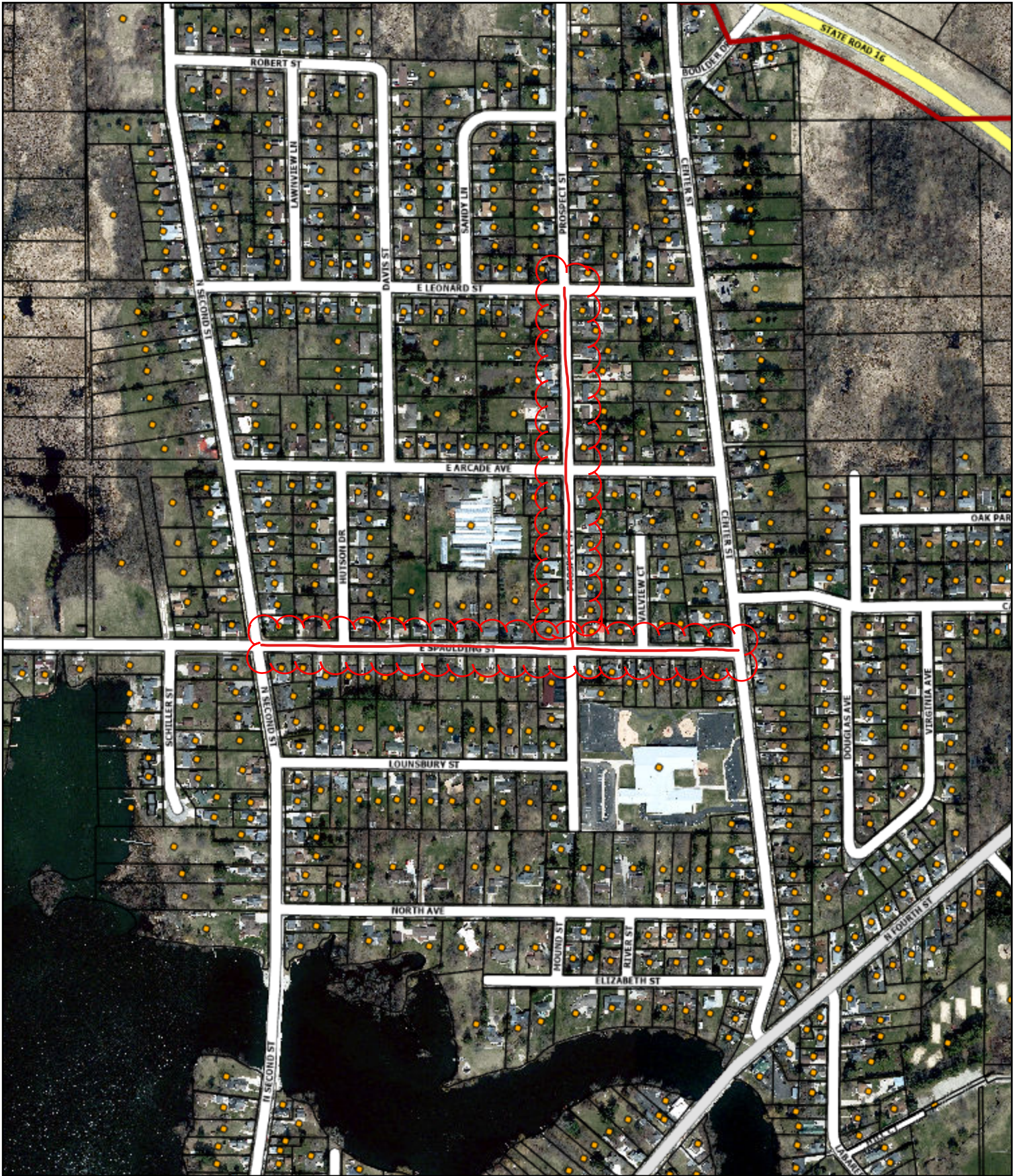





**THE CITY OF**  
**WATERTOWN**  
*Opportunity runs through it.*


**City of Watertown Geographic Information System**

Scale: 1:5,717      Printed on: January 2, 2026  
SCALE BAR = 1"      Author:

DISCLAIMER: This map is not a substitute for an actual field survey or onsite investigation. The accuracy of this map is limited to the quality of the records from which it was assembled. Other ineluctable inaccuracies occur during the compilation process. City of Watertown makes no warranty whatsoever concerning this information.



	Municipal Boundary		Common Areas
	Parcels Boundaries		Addresses

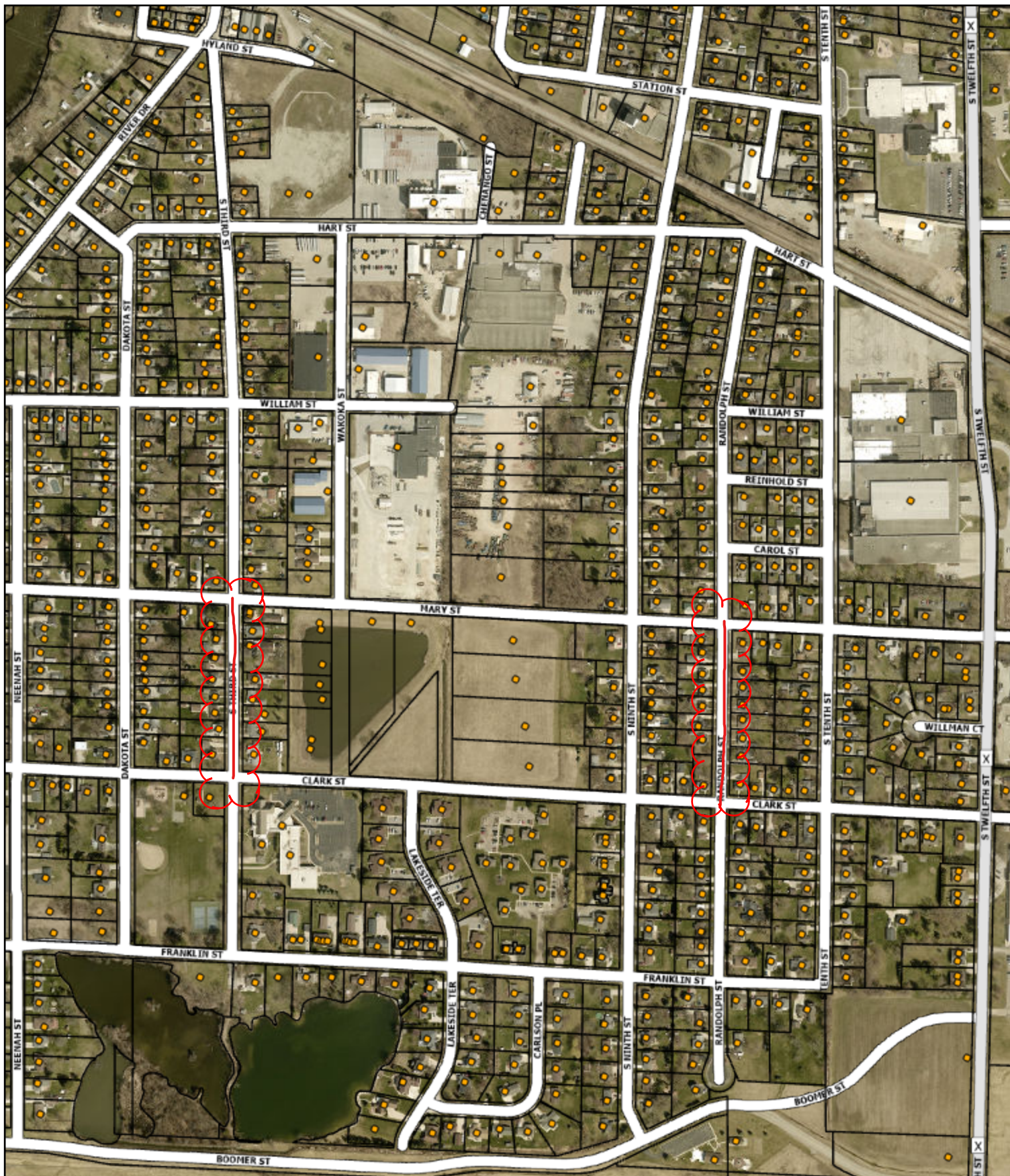


**THE CITY OF**  
**WATERTOWN**  
*Opportunity runs through it.*

**City of Watertown Geographic Information System**

Scale: 1:5,717      Printed on: January 2, 2026  
SCALE BAR = 1"      Author:

DISCLAIMER: This map is not a substitute for an actual field survey or onsite investigation. The accuracy of this map is limited to the quality of the records from which it was assembled. Other inherent inaccuracies occur during the compilation process. City of Watertown makes no warranty whatsoever concerning this information.



Municipal Boundary



Common Areas



Parcels Boundaries



Addresses



City of Watertown Geographic Information System

Scale: 1:5,717

Printed on: January 2, 2026

SCALE BAR = 1"

Author:

DISCLAIMER: This map is not a substitute for an actual field survey or onsite investigation. The accuracy of this map is limited to the quality of the records from which it was assembled. Other inherent inaccuracies occur during the compilation process. City of Watertown makes no warranty whatsoever concerning this information.