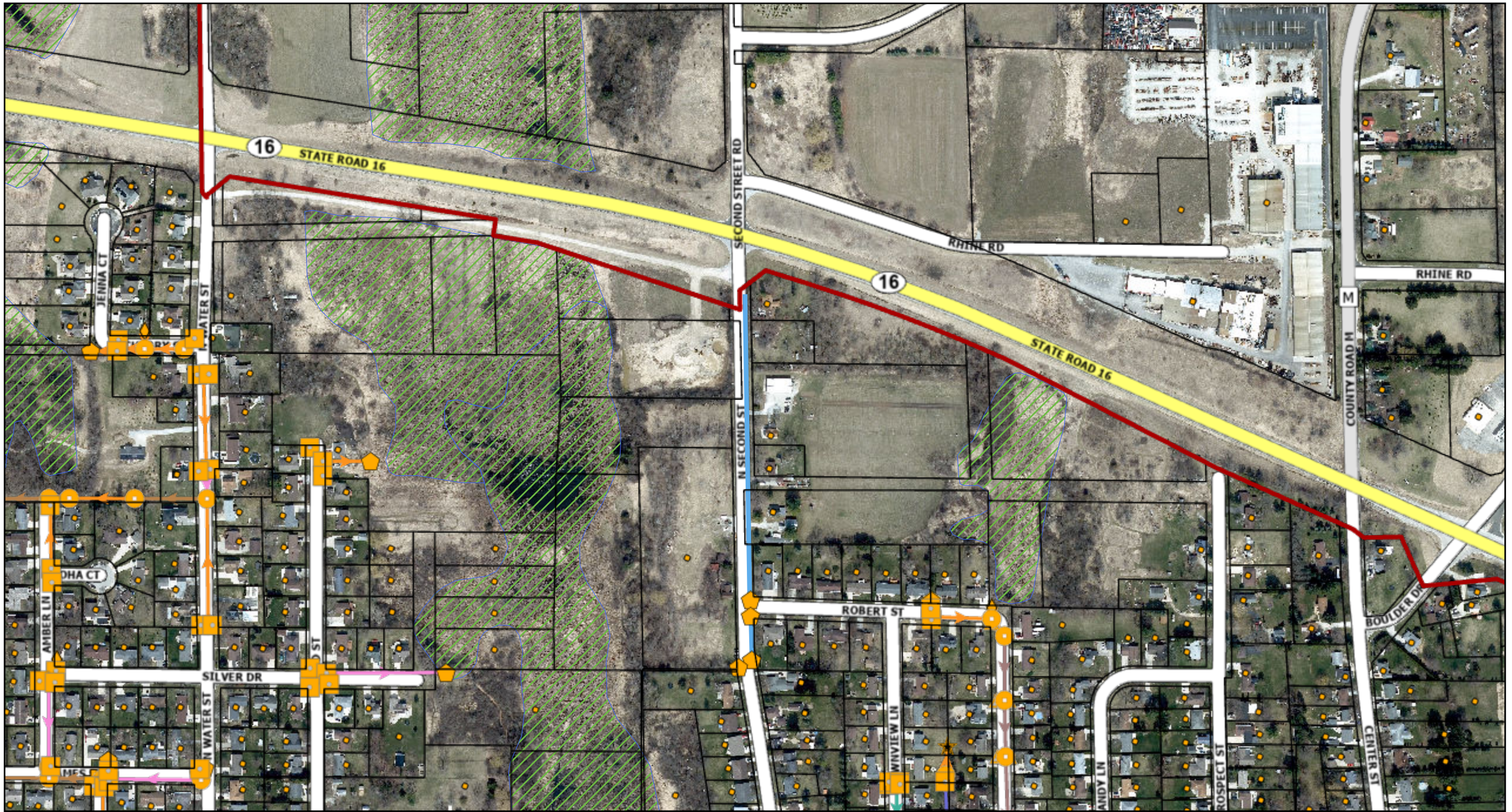


City of Watertown-New Streets and Storm 2



Municipal Boundary	Manholes	Culverts	8	18	33	48	68	98	Federal	DNR Wetlands
Parcels Boundaries	Inlets	Null Features	10	21	36	49	76	State	Private	DodgeCo
Common Areas	End Section	Stormwater Pipes by Diameter	12	24	38	53	76	City	Other	RGB
Addresses	Outfall	Pipe Diameter	14	27	42	54	84	County	Red: Band_1	Green: Band_2
Catchbasins	Tee	4	15	30	45	60	96	Roadside Swale	Blue: Band_3	
		6								

THE CITY OF WATERTOWN
 Opportunity runs through it.
 City of Watertown Geographic Information System

Scale: 1:4,428 Printed on: February 18, 2026
 SCALE BAR = 1" Author:

DISCLAIMER: This map is not a substitute for an actual field survey or onsite investigation. The accuracy of this map is limited to the quality of the records from which it was assembled. Other inherent inaccuracies occur during the compilation process. City of Watertown makes no warranty whatsoever concerning this information.