



ADDRESS
4825 E Kearney St
Springfield, MO 65803

CONTACT US
800.845.9927
springfieldsign.com

**Culver's of Watertown, WI
1722 S Church St.
Watertown, WI 53094**

Zoning Ordinance Text Amendment – Responses

Proposed Changes

Existing Article XII Table 550-132A(1)(D)(3) ***Drive Through Sign Requirements***
24 square feet maximum area per sign. 8 feet maximum height per sign.

Proposed Change to Article XII Table 550-132A(1)(D)(3) ***Drive Through Sign Requirements*** (shown in Blue and Bold)
40 square feet maximum area per sign. 8 feet maximum height per sign

When a city has a vision, the goal, and result often is to attract new opportunities (commercial, residential, recreational, and the like) to their community, from a commercial perspective this comes with many different branded/franchised entities across all walks of life. The change is success and new opportunity that comes to town so-to-speak. The request is driven for the needs of the community as a whole and governing entities must quantify and define many aspects of development <codes> to be successful for, and to align to, their visions and goals. However, to the overall needs of the community (private citizens and businesses alike) some areas of any ordinance can be overly specific creating incompatibility or inflexible specifications, a somewhat "one-size-fits-all" limitation. The specific amendment proposed herein allows another "flexible" solution while actually having a side benefit of limiting the number and sizing of this particular type of sign (menu board). Menu boards in general are as unique as each and every business is, this simple and minor amendment allows for one more way for the next unique business to fit in.

The proposed request provides a community need. Additionally, and specifically from a Culver's (petitioner's) point of view, hardships are reduced and specific limitations of not having a brand standard menu board are alleviated, some of these hardships/issues are:

- (a) The entire Culver's system (approximately 900 locations) is based upon one menu board and only one option is available to franchisees as described herein.
- (b) Without the brand standard menu board this location would be incompatible and not cohesive with franchising standards, point of purchase (POP) information available and marketing ties-ins such as TV and radio broadcast.
- (c) In general, items would have to be eliminated from the menu board display, the POP panels are standard throughout the entire system and custom panels are not available. A custom size menu board cabinet is not available.
- (d) Sales for any eliminated product would be significantly and negatively impacted.



ADDRESS
4825 E Kearney St
Springfield, MO 65803

CONTACT US
800.845.9927
springfieldsign.com

- (e) Lower sales volumes create higher per piece purchase costs for the consumer and is harmful from a cost-of-living point of view for the general public.
- (f) Increased costs, especially those not similarly experienced by competitors, leads to less competitive selling and could ultimately compromise the integrity of the business model.
- (g) Of the items that would not be able to be displayed, salads would be one. This is also a detriment to the general health of the public, it is well known that there are many arguments on the limited availability for quality and health balanced meals for the general public, this would add to that general concern and negative pressure.
- (h) The efficient operation of the drive-thru is impacted as marketing messages and general consumer education/understanding with respect to menu board items are not being aligned, creating longer times for order placement and increasing the amount of time to utilize the drive-thru ordering system and therefore often times creating congestion and lane back-up.

As previously mentioned we have approximately a little over 900 locations and growing. We recently received full permit approval at two locations; Portage, WI (Exhibit 1) & Oregon, WI (Exhibit 2) that share the same ordinances as Watertown with no issues. It was recently mentioned that the local McDonald's met code requirements by installing (3) three menu boards at each ordering position (Exhibit 3). This option causes distraction, clutter, causes confusion for customers trying to look at (3) three different menu boards, provides deleted/incomplete product identification carries through to education of the consumer, which can translate to longer times in the drive thru due to more time spent per order due to questions and lack of clarity causing potential traffic congestion. Culver's existing menu board (Exhibit 4) "overall size" is 79" x 87" = 47.72 sq. ft. Culver's current Brand Standard menu board "overall size" 5' 2 3/4" x 8' 10 1/4" = 46.29 sq. ft. with an overall "sign area" of 38.39 sq. ft. which is less than what is currently existing. Granting the text amendment will improve consumer product education, while enhancing movement in an efficient clean *clutter free* drive thru, improving the implementation of signage.

I think when this is looked at objectively, we satisfy the standards required for a Text Amendment request and that the proposed amendment will be found to be consistent with the spirit, purpose and intent of the sign ordinances governing Watertown while offering some new advantages. The granting of our request will not adversely affect the public's health, safety, or general welfare in which this property is located. Granting of this request will improve community appearance as Culver's offers reasonable control over the character of design and advances the aesthetic goals of the City throughout the community and ensures the effectiveness in the design without creating a detriment to the public.

Springfield Sign has over 40+ years of experience and have sat on a lot of local/national review committees with the specific purpose of modification or development of codes and ordinances for unified development. This proposal is consistent with many other communities we have been involved in. I truly thank you for your insight and time to this issue, thanks as always.



SPRINGFIELD SIGN

design | build | install | service

ADDRESS

4825 E Kearney St
Springfield, MO 65803

CONTACT US

800.845.9927
springfieldsign.com

Kind Regards,

Lora Martinson

Lora Martinson
Springfield Sign
4825 E Kearney St.
Springfield, MO 65803
417-862-2454
loram@springfieldsign.com

NOTE: ANY DEVIATION GREATER THAN TOLERANCES GIVEN IN THE TABLE MUST BE APPROVED BY SPRINGFIELD SIGN & NEON IN WRITING. SSN WILL SEEK OUT C.F.S.I. APPROVAL FOR CHANGE.

MENU BOARD FOOTING TO BE LOCATED PER G.C./ SURVEYOR OF RECORD, BALANCE OF FOOTINGS SIMILARLY LOCATED OR PER THE D1-D6 TABLE GIVEN. EITHER METHOD MUST CONFIRM TOLERANCES AND DIMENSIONS ABOVE.

LAYOUT

NOTE: SURVEYOR/ G.C. OF RECORD SHALL STAKE ALL FOOTING CENTER LOCATIONS. IF THIS CANNOT BE DONE, USE LAYOUT SEQUENCE GIVEN BELOW.

WITH EITHER METHOD, EITHER BY SURVEYOR OR LAYOUT SEQUENCE, THE DIMENSIONS WITH ABOVE STATED TOLERANCES MUST BE CONFIRMED BY SIGN INSTALLER. ANY DEVIATIONS MUST BE PRESENTED TO SPRINGFIELD SIGN & NEON IN WRITING, SPRINGFIELD SIGN & NEON WILL RESOLVE THE CONFLICT SO THAT INSTALLER CAN PROCEED.

LAYOUT SEQUENCE

VERIFY GENERAL FIELD (AS-BUILT) CONDITIONS TO MATCH PROVIDED DRAWINGS. DON'T GUESS-CALL WITH ANY QUESTIONS.

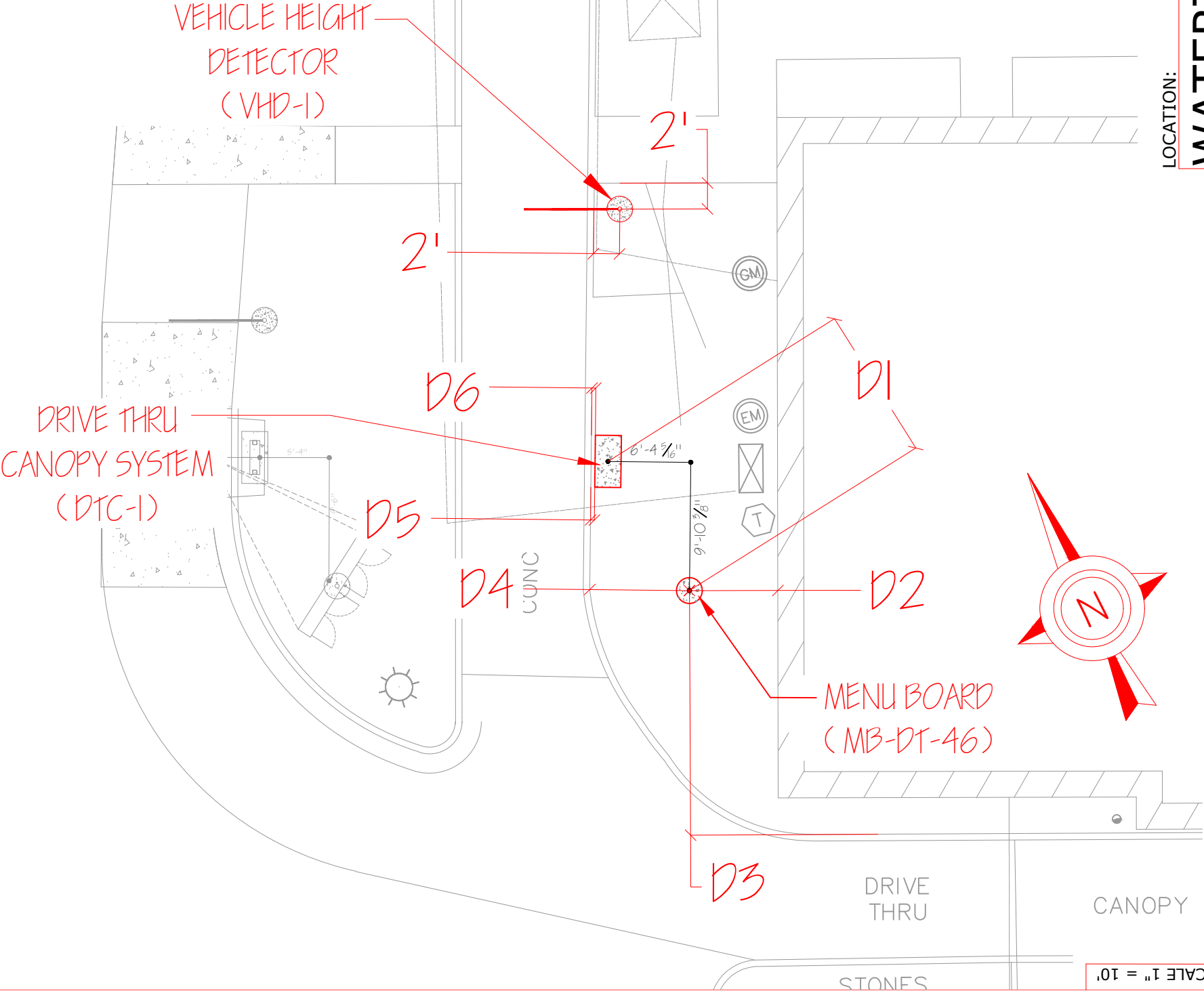
-LOCATE THE CENTER POINT OF THE PRIMARY MENU BOARD FOOTING WITH DIMENSIONS D2 & D3

-USE DIMENSIONS D1 & D5 TO POSITION THE OTHER FOOTING, (CANOPY) RELATIVE TO THE MENU BOARD FOOTING

-ROTATE THE PLACEMENT (USING D1 & D5) AROUND THE MENU BOARD FOOTING UNTIL DIMENSIONS D4 & D6 ARE CONFIRMED. ALL POINTS SHOULD BE STAKED AND READY TO LAY OUT.

* DIMENSION	MEASUREMENT	DEVIATION ALLOWED (TOLERANCE)
D1	11'-8 7/8"	+ / - 2" MAXIMUM
D2	6'-9 5/8"	+ / - 2" MAXIMUM
D3	18'-9 5/8"	+ / - 2" MAXIMUM
D4	7'-7 7/8"	+ / - 1" MAXIMUM
D5	3 1/2"	+ / - 2" MAXIMUM
D6	3 1/2"	+ / - 2" MAXIMUM

ASPHALT SURFACE



LOCATION:

WATERTOWN, WI.

Client:

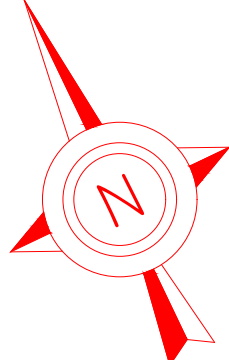
SPRINGFIELD SIGN
4825 E. Kearney
Springfield, MO 65803
(417) 862-2454

Culver Franchising System, Inc.
540 Water Street
Prairie du Sac, WI 53578
p (608) 643-7980

CULVER FRANCHISING SYSTEM, INC.
DRIVE THRU THROUGH/MENU BOARD
LAYOUT

Project No.: 44907
Drawn By: CLH
Reviewed By: MW
Date: 5-23-23

Sheet Number:
1 OF 6



LOCATION:

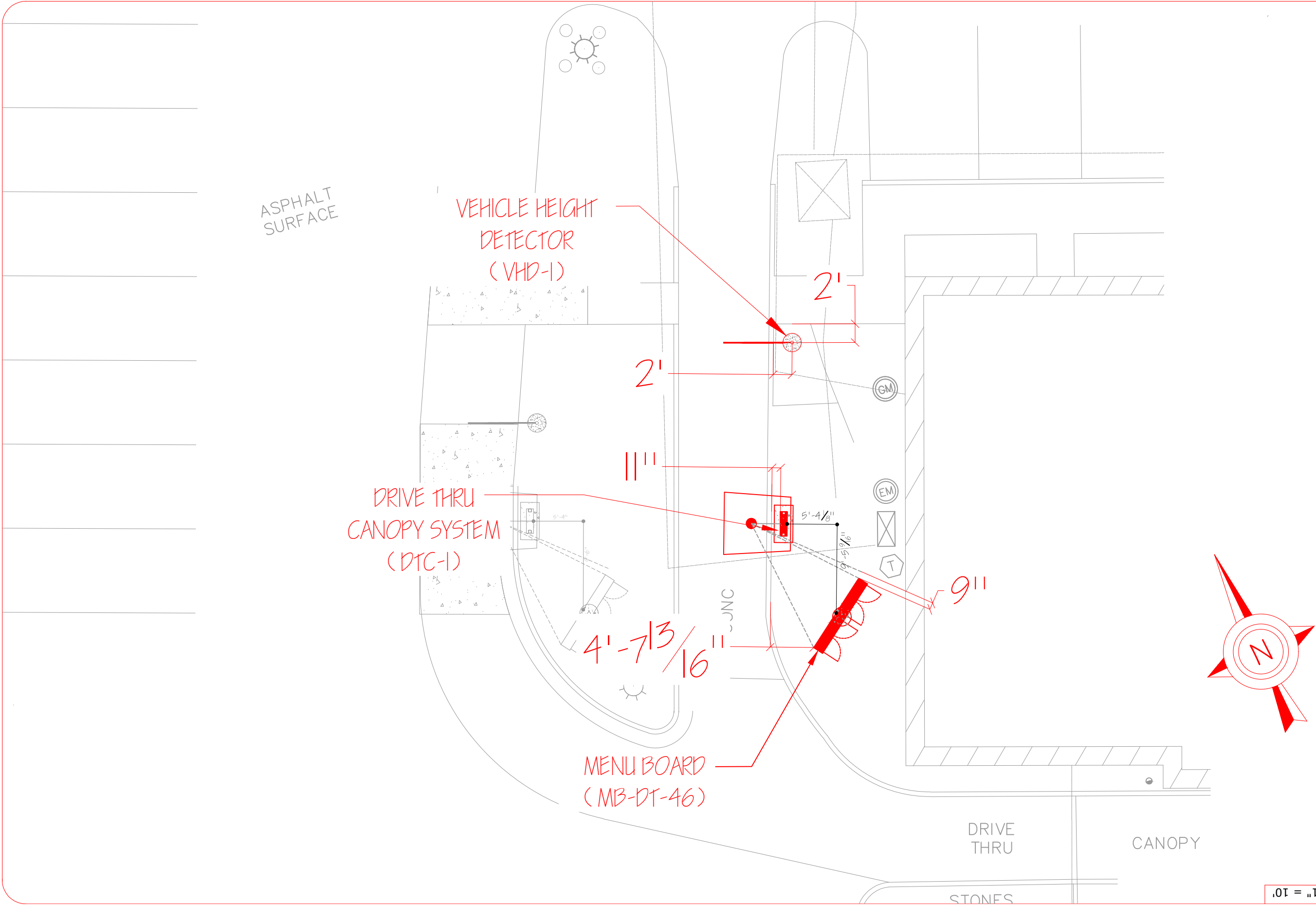
WATERTOWN, WI.

CULVER FRANCHISING SYSTEM, INC.
DRIVE THROUGH/MENU BOARD
LAYOUT

Client: Culver Franchising System, Inc.
540 Water Street
Prairie du Sac, WI 53578
p (608) 643-7980

Project No.: 44907
 Drawn By: CLH
 Reviewed By: MW
 Date: 5-23-23

Sheet Number:
2 OF 6



LOCATION:
WATERTOWN, WI.

Client:
Culver Franchising System, Inc.
540 Water Street
Prairie du Sac, WI 53578
p (608) 643-7980

CULVER FRANCHISING SYSTEM, INC.
DRIVE THROUGH/MENU BOARD
VIEWING ANGLE

Project No.: 44907
Drawn By: CLH
Reviewed By: MW
Date: 5-23-23

Sheet Number:
3 OF 6

NOTE: ANY DEVIATION GREATER THAN TOLERANCES GIVEN IN THE TABLE MUST BE APPROVED BY SPRINGFIELD SIGN & NEON IN WRITING. SSN WILL SEEK OUT C.F.S.I. APPROVAL FOR CHANGE.

MENU BOARD FOOTING TO BE LOCATED PER G.C./ SURVEYOR OF RECORD, BALANCE OF FOOTINGS SIMILARLY LOCATED OR PER THE D1-D6 TABLE GIVEN. EITHER METHOD MUST CONFIRM TOLERANCES AND DIMENSIONS ABOVE.

LAYOUT

NOTE: SURVEYOR/ G.C. OF RECORD SHALL STAKE ALL FOOTING CENTER LOCATIONS. IF THIS CANNOT BE DONE, USE LAYOUT SEQUENCE GIVEN BELOW.

WITH EITHER METHOD, EITHER BY SURVEYOR OR LAYOUT SEQUENCE, THE DIMENSIONS WITH ABOVE STATED TOLERANCES MUST BE CONFIRMED BY SIGN INSTALLER. ANY DEVIATIONS MUST BE PRESENTED TO SPRINGFIELD SIGN & NEON IN WRITING, SPRINGFIELD SIGN & NEON WILL RESOLVE THE CONFLICT SO THAT INSTALLER CAN PROCEED.

LAYOUT SEQUENCE

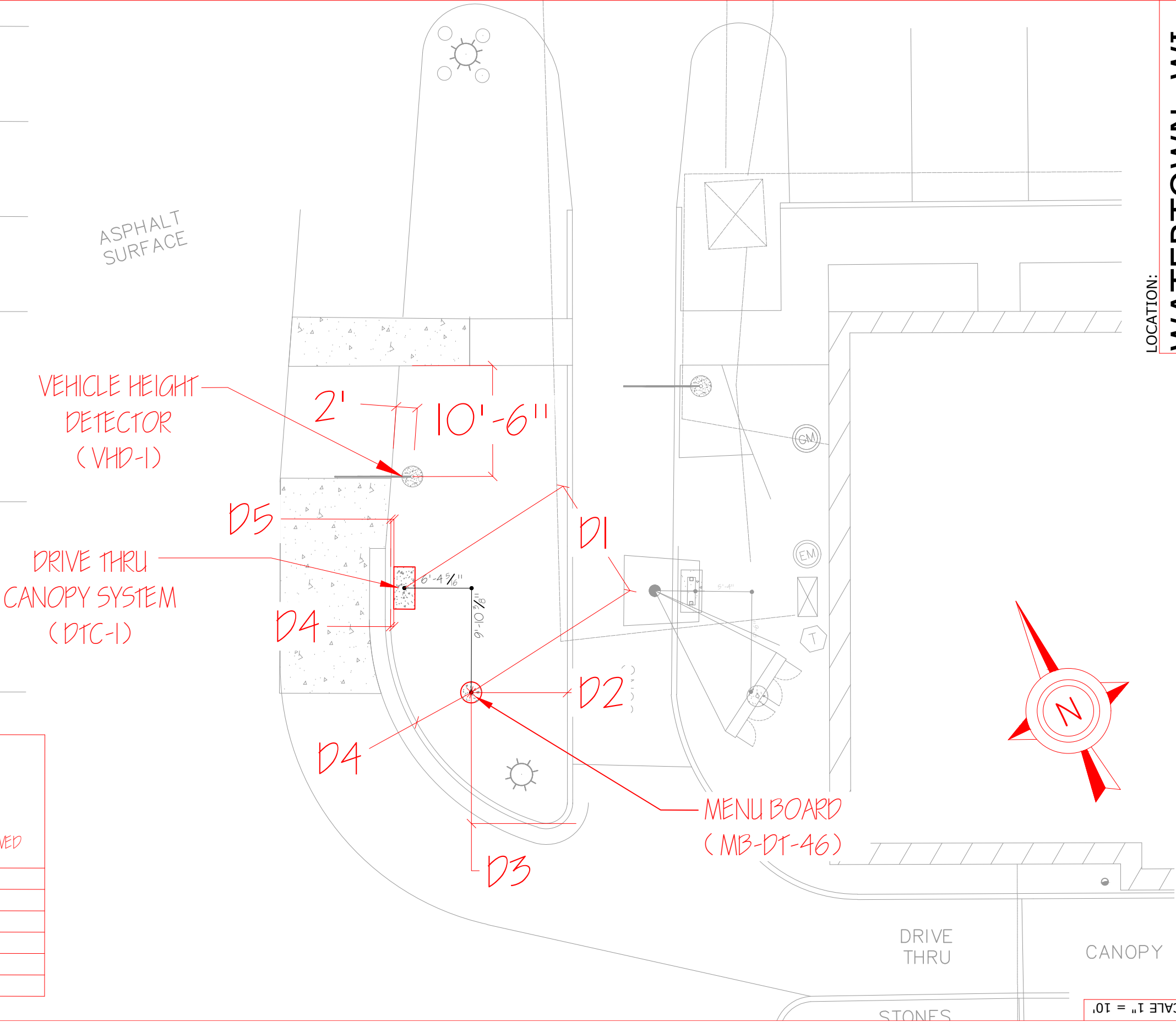
VERIFY GENERAL FIELD (AS-BUILT) CONDITIONS TO MATCH PROVIDED DRAWINGS. DON'T GUESS-CALL WITH ANY QUESTIONS.

-LOCATE THE CENTER POINT OF THE PRIMARY MENU BOARD FOOTING WITH DIMENSIONS D2 & D3

-USE DIMENSIONS D1 & D5 TO POSITION THE OTHER FOOTING, (CANOPY) RELATIVE TO THE MENU BOARD FOOTING

-ROTATE THE PLACEMENT (USING D1 & D5) AROUND THE MENU BOARD FOOTING UNTIL DIMENSIONS D4 & D6 ARE CONFIRMED. ALL POINTS SHOULD BE STAKED AND READY TO LAY OUT.

* DIMENSION	MEASUREMENT	DEVIATION ALLOWED (TOLERANCE)
D1	11'-8 7/8"	+ / - 2" MAXIMUM
D2	9'-1 1/6"	+ / - 2" MAXIMUM
D3	12'-4 15/16"	+ / - 2" MAXIMUM
D4	5'-10 11/16"	+ / - 1" MAXIMUM
D5	3 1/2"	+ / - 2" MAXIMUM
D6	3 1/2"	+ / - 2" MAXIMUM



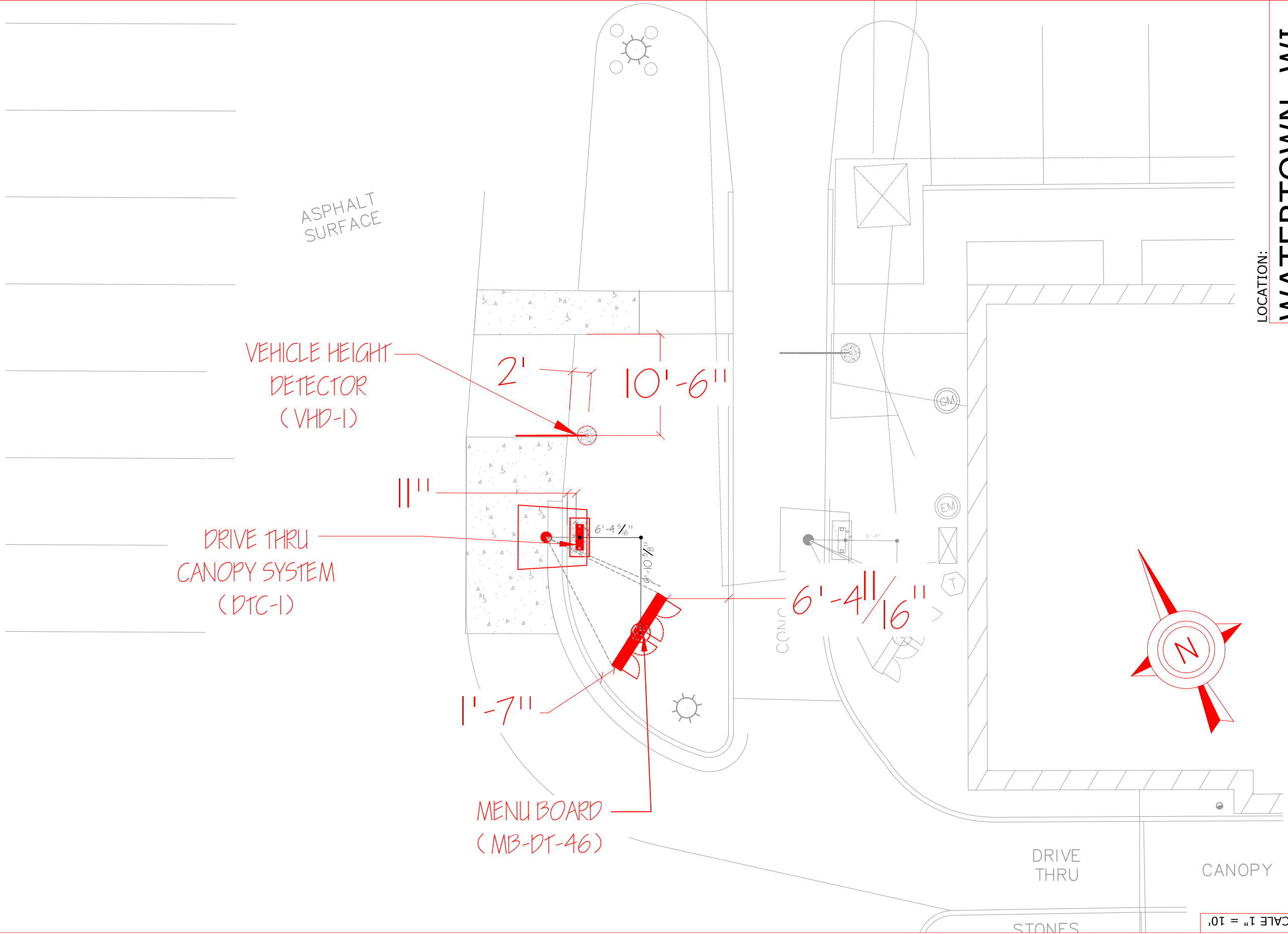
LOCATION: **WATERTOWN, WI.**

Client: **SPRINGFIELD SIGN**
4825 E. Kearney
Springfield, MO 65803
(417) 862-2454

Culver Franchising System, Inc.
540 Water Street
Prairie du Sac, WI 53578
p (608) 643-7980

CULVER FRANCHISING SYSTEM, INC.
DRIVE THROUGH/MENU BOARD LAYOUT

Project No.: 44907
Drawn By: CLH
Reviewed By: MW
Date: 5-23-23
Sheet Number: **4 OF 6**



LOCATION:

WATERTOWN, WI.

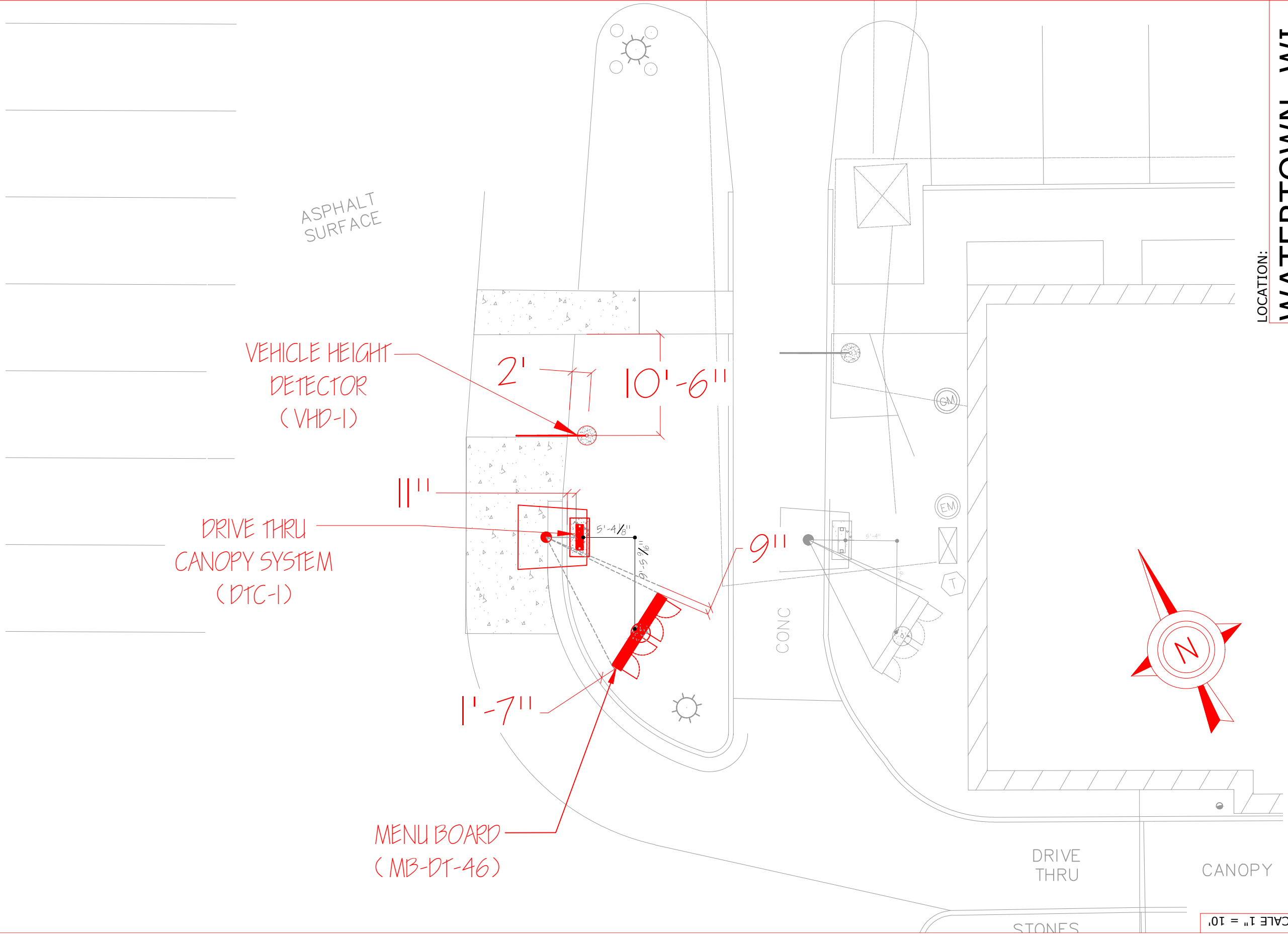
Client:

CULVER FRANCHISING SYSTEM, INC.
540 Water Street
Prairie du Sac, WI 53578
p (608) 643-7980

SPRINGFIELD SIGN
4825 E. Kearney
Springfield, MO 65803
(417) 862-2454

CULVER FRANCHISING SYSTEM, INC.
DRIVE THRU/MENU BOARD
LAYOUT

Project No.: 44907
Drawn By: CLH
Reviewed By: MW
Date: 5-23-23
Sheet Number: **5 OF 6**



LOCATION:

WATERTOWN, WI.

Client:

Culver Franchising System, Inc.
540 Water Street
Prairie du Sac, WI 53578
p (608) 643-7980

CULVER FRANCHISING SYSTEM, INC.
**DRIVE THROUGH/MENU BOARD
VIEWING ANGLE**

Project No.: 44907
Drawn By: CLH
Reviewed By: MW
Date: 5-23-23

Sheet Number:
6 OF 6

MB-DT-46 EXTERIOR MENU BOARD

Blue Outdoor Drive-Thru Menu Board

MB-DT-46

Standard Menu Board for Drive-Thru Lane

LED Internal Illumination

POP Graphic panels must be purchased separately

POPP-Out magnet access panels included for easy in & out of POP panels

"-CS" option for 160mph coastal wind standards available

Locking rear access doors (4)

Culver's

FRONT



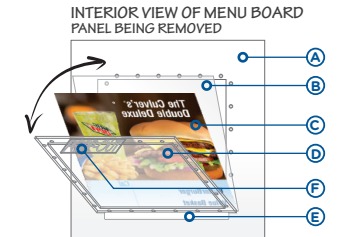
REAR



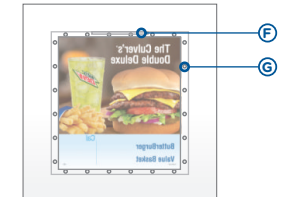
SCALE: 3/8" = 1'

*SCALE AND COLORS NOT REPRESENTATIVE FROM EMAIL ATTACHMENTS
*ALL MEASUREMENTS ARE APPROXIMATE

POPP-Out Point Of Purchase Panel System



PANEL IN PLACE



- A - INSIDE BACK OF MENU BOARD FACE (ONLY ONE PANEL SHOWN FOR CLARITY)
- B - FRONT PANEL IS ANTI-GLARE (CLEAR) FOR INCREASED VISIBILITY
- C - POP PANEL - PRODUCT GRAPHIC
- D - REAR PANEL FITTED WITH POPP-Out PANEL
- E - SUPPORTING "TIP TRAY" FOR PANELS (SELF ALIGNING)
- F - POPP-Out TAB HANDLE
- G - PAIRED MAGNETIC "LATCH" (MAGNETS EMBEDDED IN POP-Out PANEL & BACK OF MENU BOARD)

SALES PERSON:	DESIGNED BY:	AO:

DATE CREATED / REVISION HISTORY	

FILE PATH: M:\Art Assets\Culver's\Permitting

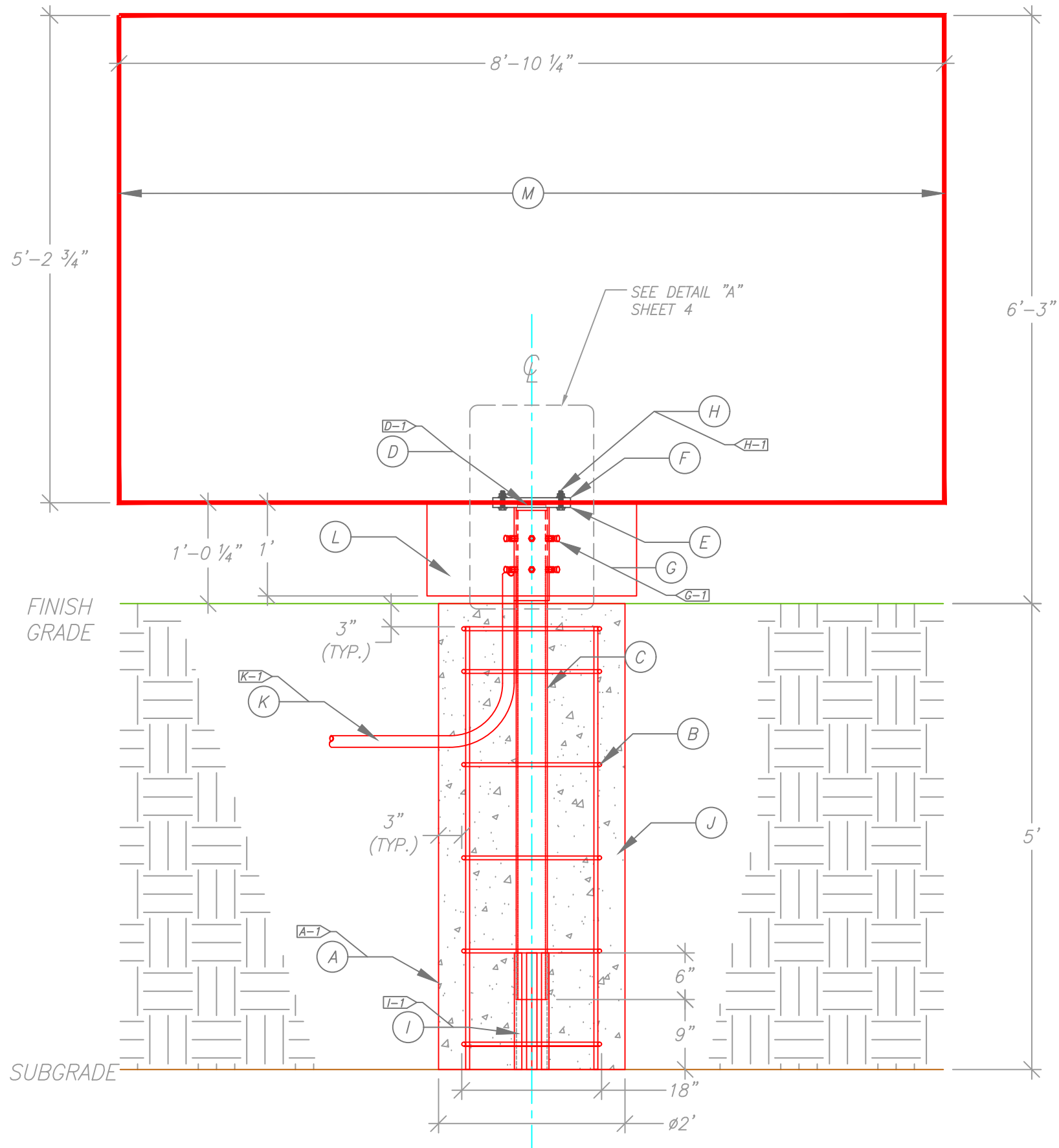
© 2022 Springfield Sign & Graphics Inc., Springfield Sign

This drawing is Copyrighted material, it remains the property of Springfield Sign unless otherwise agreed upon in writing. It is unlawful to use this drawing for bidding purposes, nor can it be reproduced, copied or used in the production of a sign without written permission from Springfield Sign & Graphics.

This is an artistic rendition and final colors / sizes may vary from that depicted herein.



SPRINGFIELD SIGN
www.springfieldsign.com



DRIVE-THROUGH MENU BOARD		
Ⓐ	AUGER	
	SIZE:	24" UNLESS OTHERWISE DETERMINED BY ENGINEERING/CODE REQUIREMENTS
	A-1	NO OVERDIG WILL BE ALLOWED. THE SOIL REMAINING OUTSIDE OF THE DIMENSIONAL LIMITS OF THE AUGERED HOLE IS TO REMAIN UNDISTURBED.
Ⓑ	REBAR REINFORCING	
	SIZE:	#4'S UNLESS OTHERWISE DETERMINED BY ENGINEERING/CODE REQUIREMENTS
	SPACING:	TO BE DETERMINED ON SITE BY ENGINEER
Ⓒ	STEEL PIPE	
	MATERIAL:	3 1/2" SCHEDULE 40
	FINISH:	SAND SMOOTH APPLY RED OXIDE PRIMER
Ⓓ	STEEL PIPE	
	MATERIAL:	4" SCHEDULE 40
	FINISH:	SAND SMOOTH APPLY RED OXIDE PRIMER
	D-1	WELDED TO MOUNTING PLATE ALL THE WAY AROUND-2 PLACES
Ⓔ	OUTSIDE BASE MOUNTING PLATE	SEE SHEET 5
	MATERIAL:	5/8" PLATE STEEL
Ⓕ	INSIDE BASE MOUNTING PLATE	SEE SHEET 5
	MATERIAL:	5/8" PLATE STEEL
Ⓖ	PIPE BOLTS	
	MATERIAL:	1/2" x 1 3/4" BOLTS / NUTS
	G-1	6 PLACES
Ⓗ	MOUNTING PLATE BOLTS	
	MATERIAL:	1/2" x 2 1/2" BOLTS / NUTS / WASHERS
	H-1	4 PLACES
Ⓛ	BASE PIPE SUPPORT	
	MATERIAL:	1" STEEL ANGLE-3 PLACES
	I-1	WELDED TO BASE PIPE
Ⓢ	BACKFILL	
	MATERIAL:	2500 PSI CONCRETE OR AS PER ENGINEERING
Ⓡ	ELECTRICAL PRIMARY	
	K-1	CONDUIT, SWEEP THROUGH FOOTING
Ⓛ	SIGN SKIRT	
	MATERIAL:	0.063" ROUTED ALUMINUM
Ⓜ	MAIN MENU BOARD	
	PART #:	MB-DT-46

SCALE 3/4" = 1'

LOCATION:

CULVER'S

SPRINGFIELD SIGN
4825 E. Kearney St.
Springfield, MO 65803
(417) 862-2454

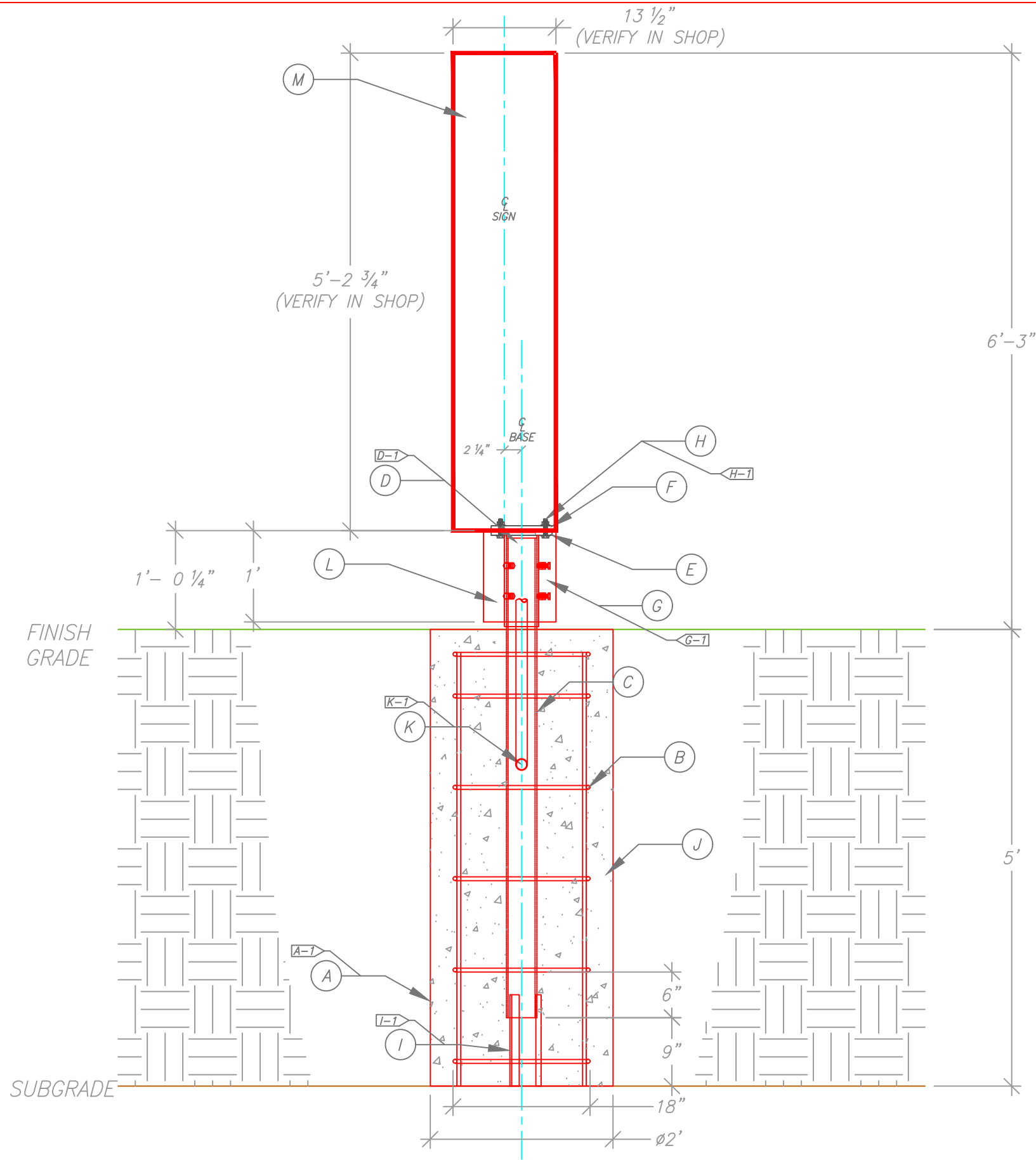
Client:

Culver Franchising
System, Inc.
540 Water Street
Prairie du Sac, WI 53578
p (608) 643-7980

CULVER FRANCHISING SYSTEM, INC.
MB-DT-BASE
MAIN MENU BOARD
FRONT VIEW

Project Number: CULVERS
Drawn By: CLH
Reviewed By: MW
Date: 4-16-21
Sheet Number:

1 OF 5



DRIVE-THROUGH MENU BOARD		
Ⓐ	AUGER	
	SIZE:	24" UNLESS OTHERWISE DETERMINED BY ENGINEERING/CODE REQUIREMENTS
	A-1	NO OVERDIG WILL BE ALLOWED. THE SOIL REMAINING OUTSIDE OF THE DIMENSIONAL LIMITS OF THE AUGERED HOLE IS TO REMAIN UNDISTURBED.
Ⓑ	REBAR REINFORCING	
	SIZE:	#4'S UNLESS OTHERWISE DETERMINED BY ENGINEERING/CODE REQUIREMENTS
	SPACING:	TO BE DETERMINED ON SITE BY ENGINEER
Ⓒ	STEEL PIPE	
	MATERIAL:	3 1/2" SCHEDULE 40
	FINISH:	SAND SMOOTH APPLY RED OXIDE PRIMER
Ⓓ	STEEL PIPE	
	MATERIAL:	4" SCHEDULE 40
	FINISH:	SAND SMOOTH APPLY RED OXIDE PRIMER
	D-1	WELDED TO MOUNTING PLATE ALL THE WAY AROUND-2 PLACES
Ⓔ	OUTSIDE BASE MOUNTING PLATE	SEE SHEET 5
	MATERIAL:	5/8" PLATE STEEL
Ⓕ	INSIDE BASE MOUNTING PLATE	SEE SHEET 5
	MATERIAL:	5/8" PLATE STEEL
Ⓖ	PIPE BOLTS	
	MATERIAL:	1/2" x 1 3/4" BOLTS / NUTS
	G-1	6 PLACES
Ⓗ	MOUNTING PLATE BOLTS	
	MATERIAL:	1/2" x 2 1/2" BOLTS / NUTS / WASHERS
	H-1	4 PLACES
Ⓛ	BASE PIPE SUPPORT	
	MATERIAL:	1" STEEL ANGLE-3 PLACES
	I-1	WELDED TO BASE PIPE
Ⓢ	BACKFILL	
	MATERIAL:	2500 PSI CONCRETE OR AS PER ENGINEERING
Ⓚ	ELECTRICAL PRIMARY	
	K-1	CONDUIT, SWEEP THROUGH FOOTING
Ⓛ	SIGN SKIRT	
	MATERIAL:	0.063" ROUTED ALUMINUM
Ⓜ	MAIN MENU BOARD	
	PART #:	MB-DT-46

SCALE 3/4" = 1'

LOCATION:

CULVER'S

SPRINGFIELD SIGN
4825 E. Kearney St.
Springfield, MO 65803
(417) 862-2454

Client:

Culver Franchising
System, Inc.
540 Water Street
Prairie du Sac, WI 53578
p (608) 643-7980

CULVER FRANCHISING SYSTEM, INC.

MB-DT-BASE
MAIN MENU BOARD
SIDE VIEW

Project Number: CULVER'S
Drawn By: CLH
Reviewed By: MW
Date: 4-16-21

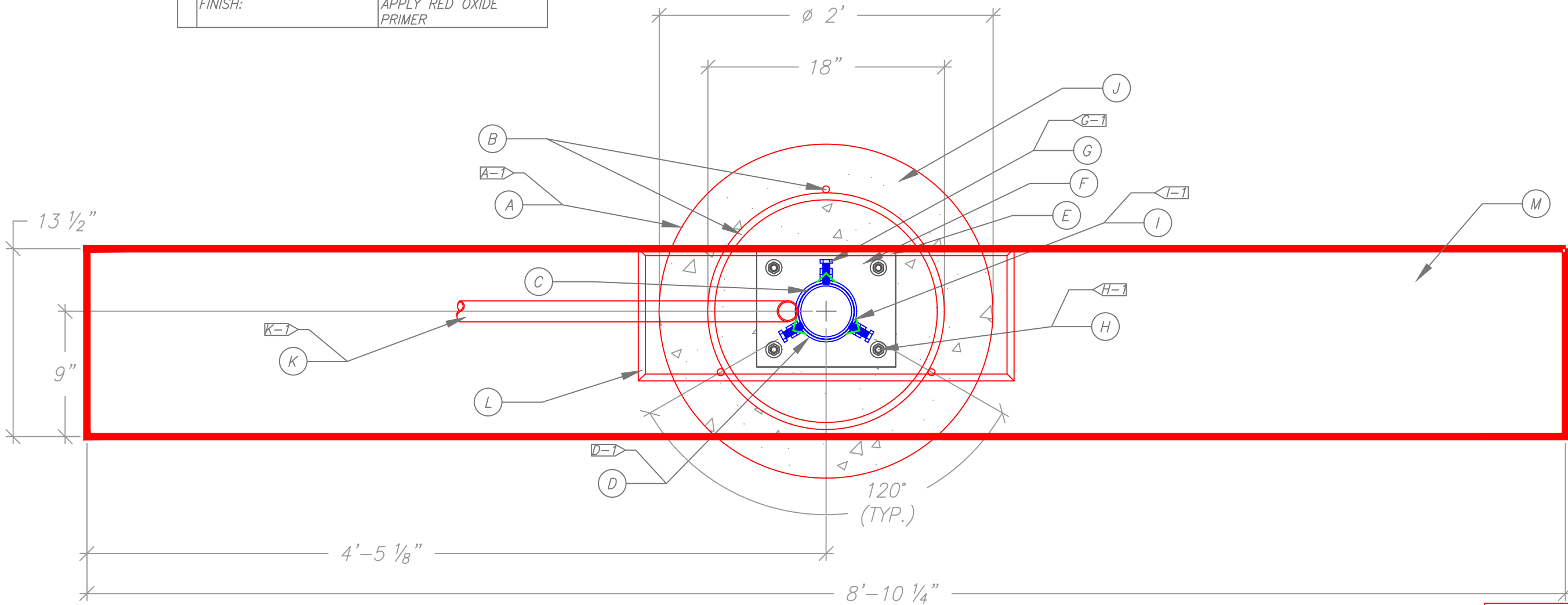
Sheet Number:

2 OF 5

DRIVE-THROUGH/MAIN MENU BOARD		
(A)	AUGER	
	SIZE:	24" UNLESS OTHERWISE DETERMINED BY ENGINEERING/CODE REQUIREMENTS
	A-1	NO OVERDIG WILL BE ALLOWED. THE SOIL REMAINING OUTSIDE OF THE DIMENSIONAL LIMITS OF THE AUGERED HOLE IS TO REMAIN UNDISTURBED.
(B)	REBAR REINFORCING	
	SIZE:	#4'S UNLESS OTHERWISE DETERMINED BY ENGINEERING/CODE REQUIREMENTS
	SPACING:	TO BE DETERMINED ON SITE BY ENGINEER
(C)	STEEL PIPE	
	MATERIAL:	3 1/2" SCHEDULE 40
	FINISH:	SAND SMOOTH APPLY RED OXIDE PRIMER

(D)	STEEL PIPE	
	MATERIAL:	4" SCHEDULE 40
	FINISH:	SAND SMOOTH APPLY RED OXIDE PRIMER
	D-1	WELDED TO MOUNTING PLATE ALL THE WAY AROUND-2 PLACES
(E)	OUTSIDE BASE MOUNTING PLATE	SEE SHEET 5
	MATERIAL:	5/8" PLATE STEEL
(F)	INSIDE BASE MOUNTING PLATE	SEE SHEET 5
	MATERIAL:	5/8" PLATE STEEL
(G)	PIPE BOLTS	
	MATERIAL:	1/2" x 1 3/4" BOLTS / NUTS
	G-1	6 PLACES

(H)	MOUNTING PLATE BOLTS	
	MATERIAL:	1/2" x 2 1/2" BOLTS / NUTS / WASHERS
	H-1	4 PLACES
(I)	BASE PIPE SUPPORT	
	MATERIAL:	1" STEEL ANGLE-3 PLACES
	I-1	WELDED TO BASE PIPE
(J)	BACKFILL	
	MATERIAL:	2500 PSI CONCRETE OR AS PER ENGINEERING
(K)	ELECTRICAL PRIMARY	
	K-1	CONDUIT, SWEEP THROUGH FOOTING
(L)	SIGN SKIRT	
	MATERIAL:	0.063" ROUTED ALUMINUM
(M)	MAIN MENU BOARD	
	PART #:	MB-DT-46



SCALE 1 1/2" = 1'

LOCATION:

CULVER'S

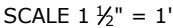
SPRINGFIELD SIGN
4825 E. Kearney St.
Springfield, MO 65803
(417) 862-2454

Client:
Culver Franchising
System, Inc.
540 Water Street
Prairie du Sac, WI 53578
p (608) 643-7980

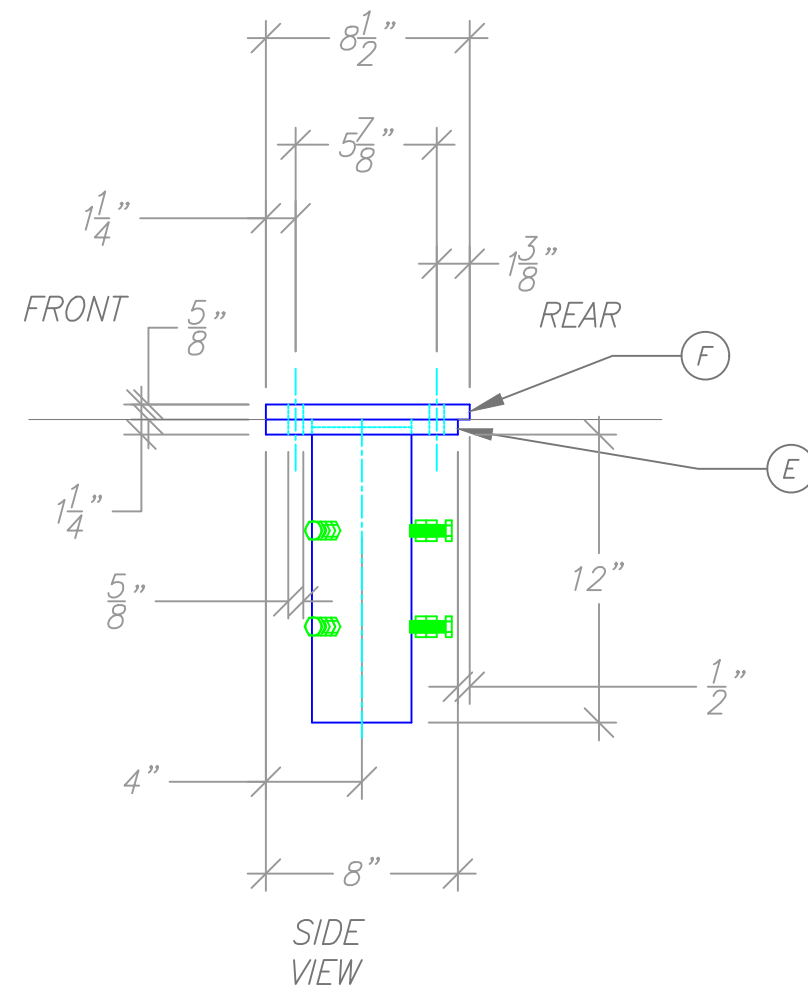
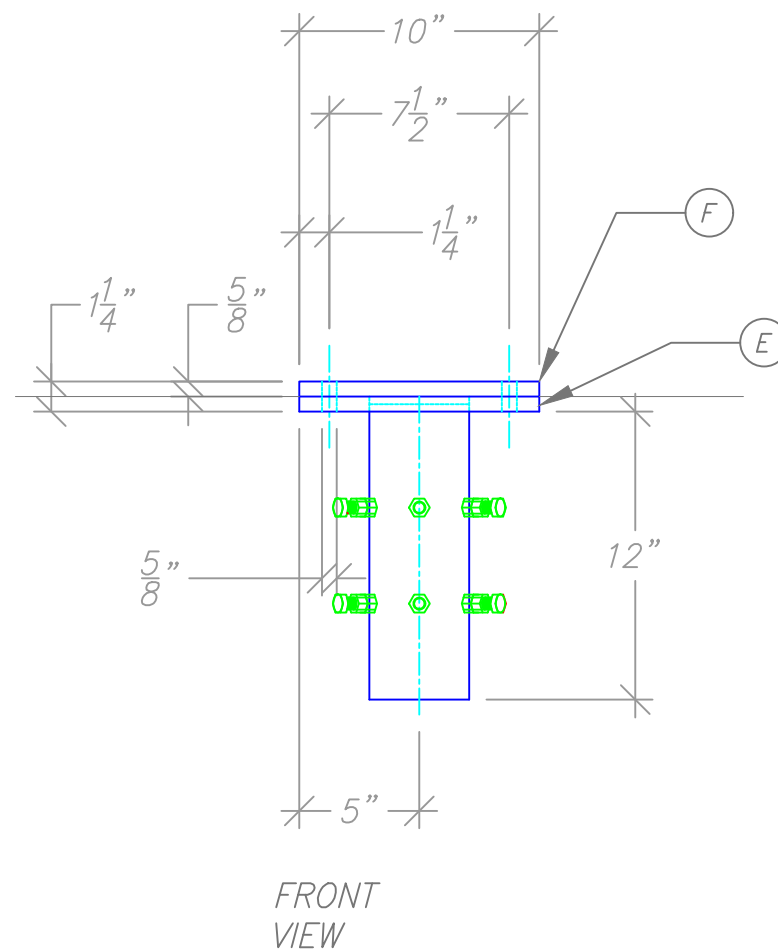
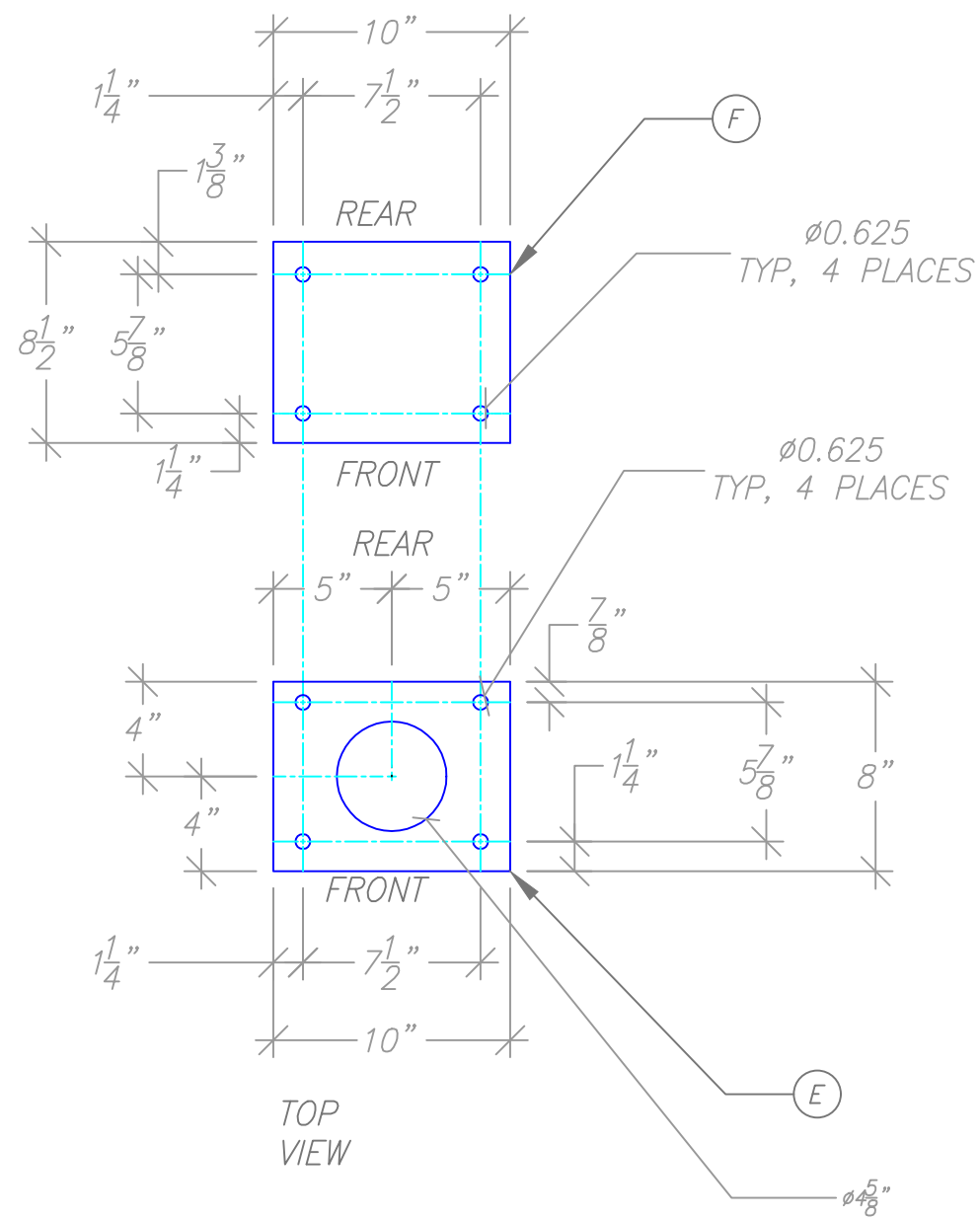
CULVER FRANCHISING SYSTEM, INC.
MB-DT-BASE
MAIN MENU BOARD
TOP VIEW

Project Number: CULVERS
Drawn By: CLH
Reviewed By: MW
Date: 4-16-21

Sheet Number:
3 OF 5



Project Number: CULVER'S
 Drawn By: CLH
 Reviewed By: MW
 Date: 4-16-21
 Sheet Number:



DRIVE-THROUGH/MAIN MENU BOARD		
(E)	OUTSIDE BASE MOUNTING PLATE	
	MATERIAL:	5/8" PLATE STEEL
(F)	INSIDE BASE MOUNTING PLATE	
	MATERIAL:	5/8" PLATE STEEL

SCALE 1 1/2" = 1'

LOCATION:

CULVER'S

SPRINGFIELD SIGN
4825 E. Kearney St.
Springfield, MO 65803
(417) 862-2454

Client:

Culver Franchising
System, Inc.
540 Water Street
Prairie du Sac, WI 53578
p (608) 643-7980

CULVER FRANCHISING SYSTEM, INC.
DRIVE-THROUGH/MAIN MENU BOARD
BASE MOUNTING PLATES
SIGN BASE-DETAIL

Project Number: CULVER'S
Drawn By: CLH
Reviewed By: MW
Date: 4-16-21
Sheet Number:

5 OF 5

EXHIBIT 1

FOR INSPECTIONS CALL (608) 697-1206		GENERAL BUILDING PERMIT APPLICATION					PERMIT # 20-310-11-271	
		GENERAL ENGINEERING COMPANY P.O. BOX 340 PORTAGE, WI 53901 OFFICE: (608) 745-4070					EXPIRATION 11/10/2022	
Parcel number : 3092.05		City of Portage, Columbia County, WI					Mun. Number 11-271	
PROJECT DESCRIPTION (Submit Building Plans & Site Plan) SIGN							Does this project require any additional approvals or permits? No	
Building Address 2733 NEW PINERY				Responsible Party Email			Finished Project Value \$5,735	
Zoning District(s):	Zoning Permit No:	Corner Lot Yes No	Bldg. Height	Setbacks:	Front:	Rear:	Left:	Right:
Owner's Name Address S&L PROPERTIES		2733 NEW PINERY , PORTAGE , WI,					Phone & email	
Construction contractor WI Lic. No & Exp. Date Address TWO RIVER SIGNS		204	1316 WAUONA TRAIL, PORTAGE, WI, 53901			Phone & email (608) 745-4242		
Dwelling constr. qualifier WI Lic. No & Exp. Date Address						Phone & email		
HVAC contractor WI Lic. No & Exp. Date Address						Phone & email		
Electrical contractor WI Lic. No & Exp. Date Address						Phone & email		
Master electrician WI Lic. No & Exp. Date Address						Phone & email		
Plumbing contractor WI Lic. No & Exp. Date Address						Phone & email		
RESIDENTIAL Single Family/Duplex	Addition: <input type="checkbox"/> Electrical <input type="checkbox"/> Plumbing <input type="checkbox"/> HVAC <input type="checkbox"/> Erosion Control <input type="checkbox"/> Construction							
	Detached Accessory Building: <input type="checkbox"/> Electrical <input type="checkbox"/> Plumbing <input type="checkbox"/> HVAC <input type="checkbox"/> Construction							
	Remodel: <input type="checkbox"/> Electrical <input type="checkbox"/> Plumbing <input type="checkbox"/> HVAC <input type="checkbox"/> Construction							
	Other: <input type="checkbox"/> Fence <input type="checkbox"/> Plumbing <input type="checkbox"/> Removal of Structure (Raze) <input type="checkbox"/> Electrical Service Upgrade <input type="checkbox"/> Erosion Control <input type="checkbox"/> HVAC <input type="checkbox"/> Electrical <input type="checkbox"/> Construction							
COMMERCIAL	New Commercial Building: <input type="checkbox"/> Electrical <input type="checkbox"/> Plumbing <input type="checkbox"/> HVAC <input type="checkbox"/> Construction <input type="checkbox"/> Erosion Control							
	Commercial Addition/Alteration: <input type="checkbox"/> Electrical <input type="checkbox"/> HVAC <input type="checkbox"/> Erosion Control <input checked="" type="checkbox"/> Sign <input type="checkbox"/> Building Sq. Ft. <input type="checkbox"/> Plumbing <input type="checkbox"/> Construction <input type="checkbox"/> Fence <input type="checkbox"/> Removal of Structure (Raze)							
	State of Wisconsin Plan Approval Needed: Yes <input checked="" type="checkbox"/> No (Approved plans must be submitted with permit application)							
Zoning – When applicable, must obtain a copy of setback information regarding height, lot coverage, etc.								
<i>I agree to comply with all applicable codes, statutes and ordinances and with the conditions of this permit; understand that the issuance of the permit creates no legal liability, express or implied, on the state or municipality; and certify that all the above information is accurate. If I am an owner applying for an erosion control or construction permit, I have read the cautionary statement regarding contractor financial responsibility on the reverse side of the last ply of this application. I expressly grant the building inspector or the inspector's authorized agent permission to enter the premises for which this permit is sought at all reasonable hours and for any proper purpose to inspect the work which is being done. It is the Owner/Contractors Responsibility to Call in ALL INSPECTIONS to the Inspector.</i>								
APPLICANT'S SIGNATURE					DATE SIGNED			
APPROVAL CONDITIONS This permit is issued pursuant to the following conditions. Failure to comply may result in suspension or revocation of this permit or other penalty. See attached for conditions of approval.								
FEES:		PERMIT(S) ISSUED			PERMIT ISSUED BY:			
Construction Plumbing Electrical HVAC Zoning Other Administrative Total Permit Fee		Constr. HVAC Electric Plumbing Erosion Control Other			Name MIKE BORTZ Date 11/10/2020 Telephone (608) 697-1206 Cert. No 667132			

SCALE 1" = 1'

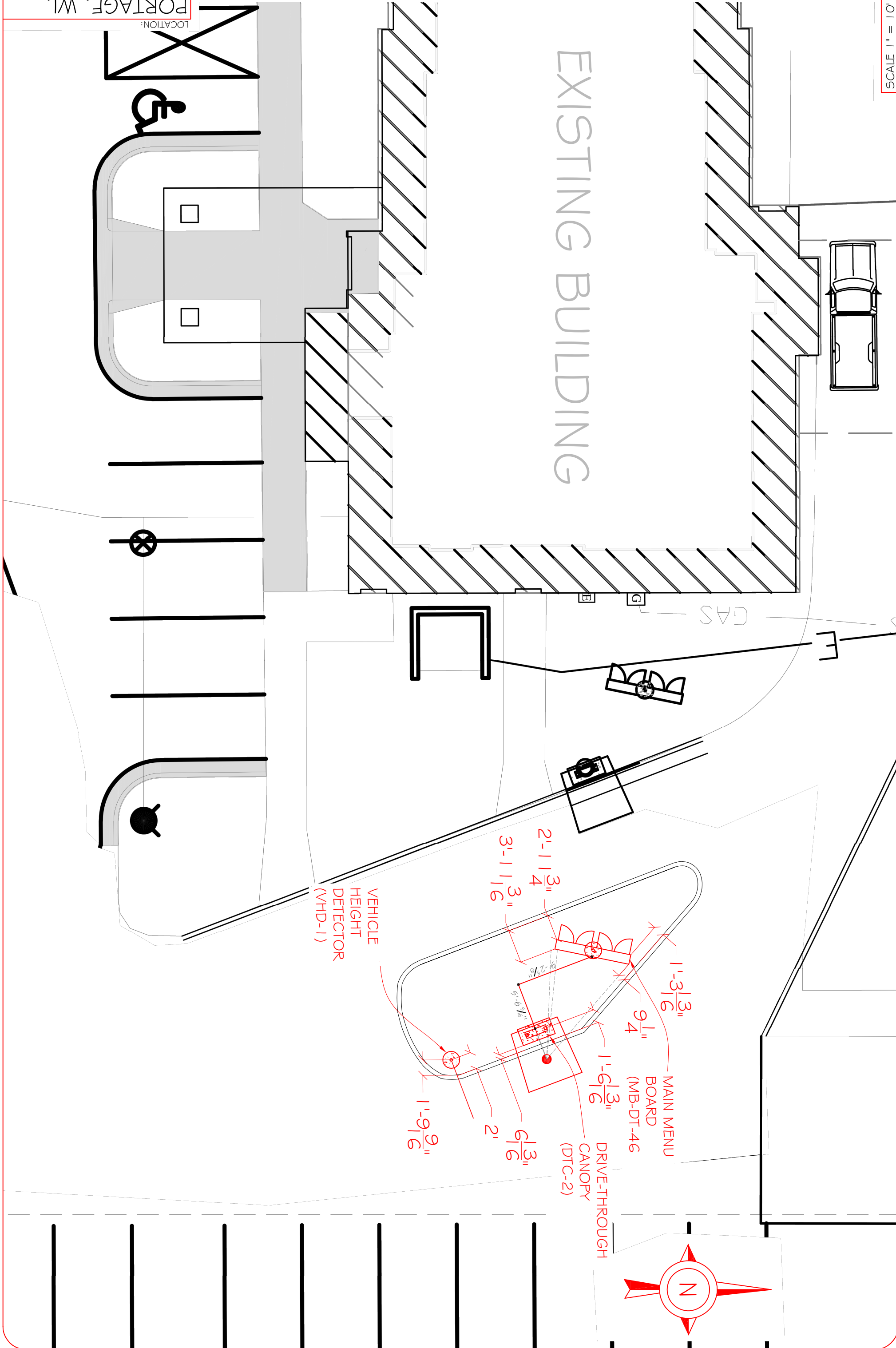
Project Number: 22099
Drawn By: CLH
Reviewed By: MM
Date: 11-5-20

CULVER FRANCHISING SYSTEM, INC.
NEW CULVERS-SIGNAGE
2733 NW PINERY ROAD
PORTAGE, I. 53901
SIGN PLACEMENT PLAN

Client:
Culver Franchising System, Inc.
540 Water Street
Prairie du Sac, WI 53578
P (608) 643-7980

SPRINGFIELD SIGN
4825 E. Kearney St.
Springfield, MO 65803
(417) 862-2454

LOCATION:
PORTAGE, WI.



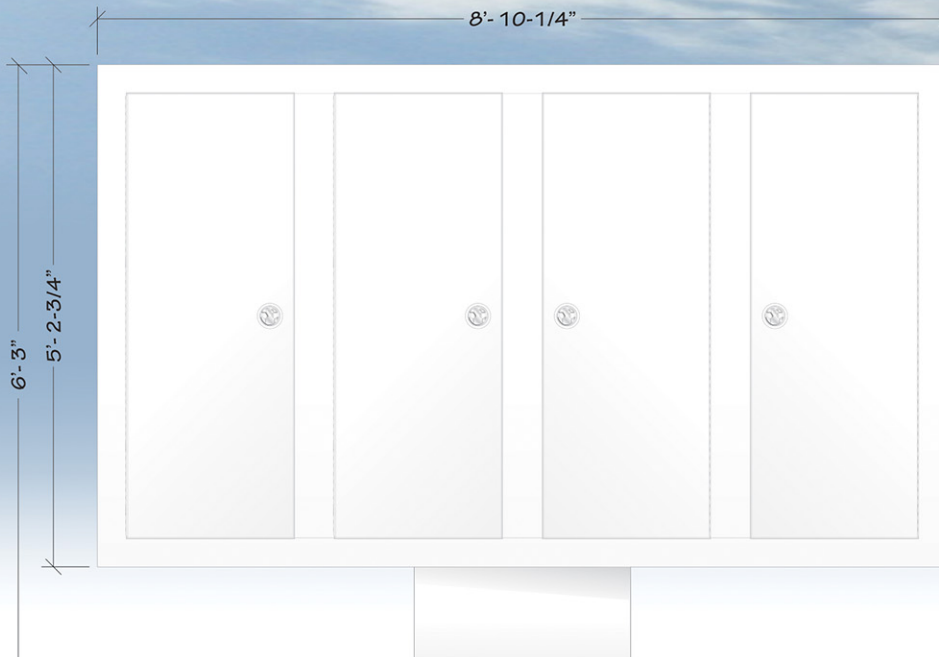
MENU BOARDS

Blue Outdoor Drive-Thru Menu Board

FRONT



REAR



MB-DT-46

Blue Outdoor Drive-Thru Menu Board

SIGN DETAILS:

Standard Menu Board for Drive-Thru Lane

LED Internal Illumination

POP Graphic panels must be purchased separately

POPP-Out magnet access panels included for easy in & out of POP panels

“-CS” option for 160mph coastal wind standards available

Locking rear access doors (4)

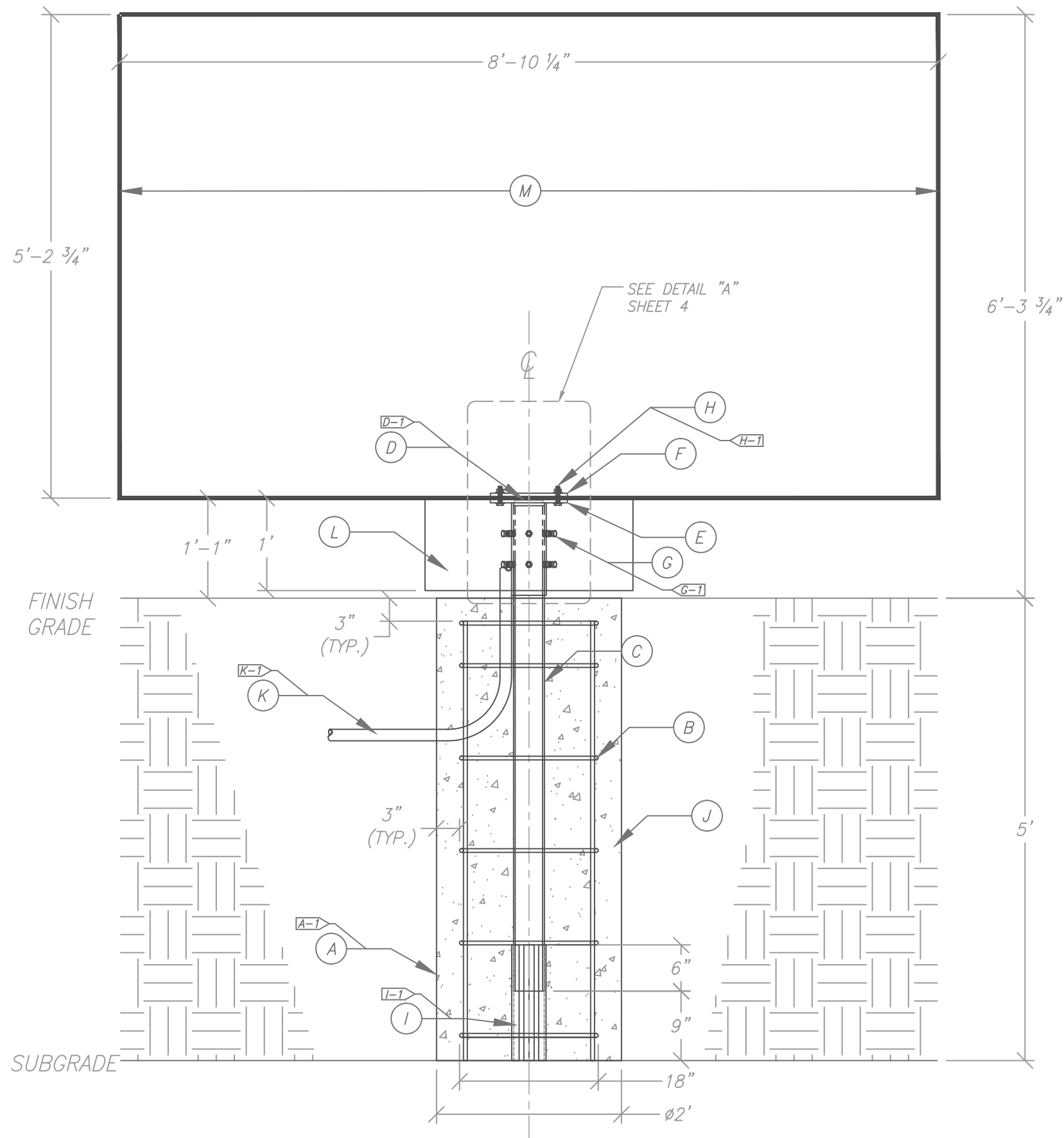
Culver's

SIGN & MENU BOARD BRAND STANDARDS
WITH TECHNICAL SPECIFICATIONS

SCALE: 1/2" = 1'

MB-DT-46

IF COASTAL STANDARD: MB-DT-46-CS



DRIVE-THROUGH MENU BOARD		
Ⓐ	AUGER	
	SIZE:	24" UNLESS OTHERWISE DETERMINED BY ENGINEERING/CODE REQUIREMENTS
	A-1	NO OVERDIG WILL BE ALLOWED. THE SOIL REMAINING OUTSIDE OF THE DIMENSIONAL LIMITS OF THE AUGERED HOLE IS TO REMAIN UNDISTURBED.
Ⓑ	REBAR REINFORCING	
	SIZE:	#4'S UNLESS OTHERWISE DETERMINED BY ENGINEERING/CODE REQUIREMENTS
	SPACING:	TO BE DETERMINED ON SITE BY ENGINEER
Ⓒ	STEEL PIPE	
	MATERIAL:	3 1/2" SCHEDULE 40
	FINISH:	SAND SMOOTH APPLY RED OXIDE PRIMER
Ⓓ	STEEL PIPE	
	MATERIAL:	4" SCHEDULE 40
	FINISH:	SAND SMOOTH APPLY RED OXIDE PRIMER
	D-1	WELDED TO MOUNTING PLATE ALL THE WAY AROUND-2 PLACES
Ⓔ	OUTSIDE BASE MOUNTING PLATE	SEE SHEET 5
	MATERIAL:	5/8" PLATE STEEL
Ⓕ	INSIDE BASE MOUNTING PLATE	SEE SHEET 5
	MATERIAL:	5/8" PLATE STEEL
Ⓖ	PIPE BOLTS	
	MATERIAL:	1/2" x 1 3/4" BOLTS / NUTS
	G-1	6 PLACES
Ⓗ	MOUNTING PLATE BOLTS	
	MATERIAL:	1/2" x 2 1/2" BOLTS / NUTS / WASHERS
	H-1	4 PLACES
Ⓛ	BASE PIPE SUPPORT	
	MATERIAL:	1" STEEL ANGLE-3 PLACES
	I-1	WELDED TO BASE PIPE
Ⓢ	BACKFILL	
	MATERIAL:	2500 PSI CONCRETE OR AS PER ENGINEERING
Ⓚ	ELECTRICAL PRIMARY	
	K-1	CONDUIT, SWEEP THROUGH FOOTING
Ⓜ	SIGN SKIRT	
	MATERIAL:	0.063" ROUTED ALUMINUM
Ⓜ	MAIN MENU BOARD	
	PART #:	MB-DT-46

SCALE 3/4" = 1'

LOCATION:
CULVER'S

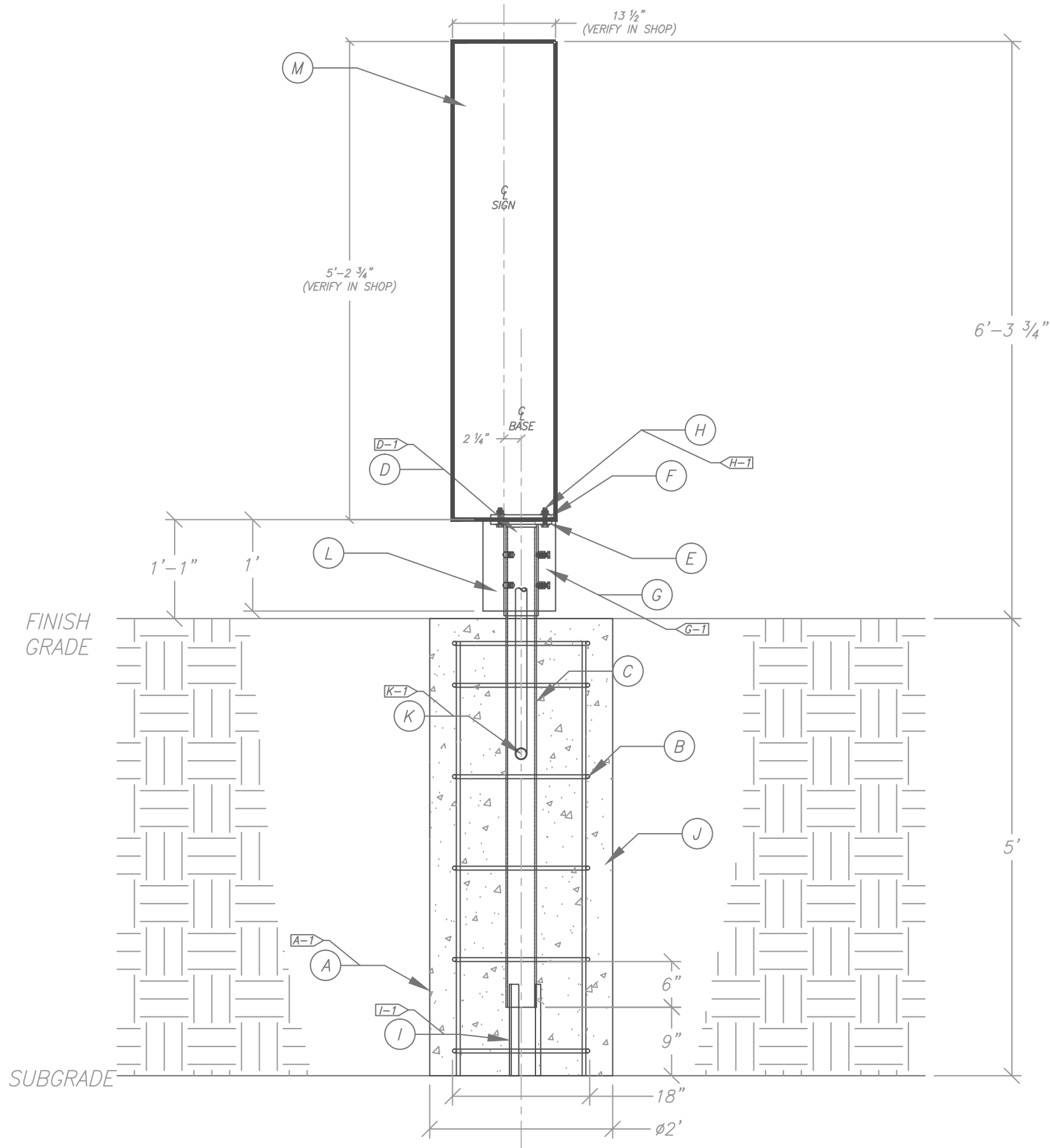
SPRINGFIELD SIGN
4825 E. Kearney St.
Springfield, MO 65803
(417) 862-2454

Client:
Culver Franchising
System, Inc.
540 Water Street
Prairie du Sac, WI 53578
p (608) 643-7980

CULVER FRANCHISING SYSTEM, INC.
MB-DT-BASE
MAIN MENU BOARD
FRONT VIEW

Project Number: 9902
Drawn By: DEN
Reviewed By: MW
Date: 7-25-17
Sheet Number:

1 OF 5



DRIVE-THROUGH MENU BOARD		
Ⓐ	AUGER	
	SIZE:	24" UNLESS OTHERWISE DETERMINED BY ENGINEERING/CODE REQUIREMENTS
	A-1	NO OVERDIG WILL BE ALLOWED. THE SOIL REMAINING OUTSIDE OF THE DIMENSIONAL LIMITS OF THE AUGERED HOLE IS TO REMAIN UNDISTURBED.
Ⓑ	REBAR REINFORCING	
	SIZE:	#4'S UNLESS OTHERWISE DETERMINED BY ENGINEERING/CODE REQUIREMENTS
	SPACING:	TO BE DETERMINED ON SITE BY ENGINEER
Ⓒ	STEEL PIPE	
	MATERIAL:	3 1/2" SCHEDULE 40
	FINISH:	SAND SMOOTH APPLY RED OXIDE PRIMER
Ⓓ	STEEL PIPE	
	MATERIAL:	4" SCHEDULE 40
	FINISH:	SAND SMOOTH APPLY RED OXIDE PRIMER
	D-1	WELDED TO MOUNTING PLATE ALL THE WAY AROUND-2 PLACES
Ⓔ	OUTSIDE BASE MOUNTING PLATE	SEE SHEET 5
	MATERIAL:	5/8" PLATE STEEL
Ⓕ	INSIDE BASE MOUNTING PLATE	SEE SHEET 5
	MATERIAL:	5/8" PLATE STEEL
Ⓖ	PIPE BOLTS	
	MATERIAL:	1/2" x 1 3/4" BOLTS / NUTS
	G-1	6 PLACES
Ⓗ	MOUNTING PLATE BOLTS	
	MATERIAL:	1/2" x 2 1/2" BOLTS / NUTS / WASHERS
	H-1	4 PLACES
Ⓛ	BASE PIPE SUPPORT	
	MATERIAL:	1" STEEL ANGLE-3 PLACES
	I-1	WELDED TO BASE PIPE
Ⓢ	BACKFILL	
	MATERIAL:	2500 PSI CONCRETE OR AS PER ENGINEERING
Ⓐ	ELECTRICAL PRIMARY	
	K-1	CONDUIT, SWEEP THROUGH FOOTING
Ⓛ	SIGN SKIRT	
	MATERIAL:	0.063" ROUTED ALUMINUM
Ⓜ	MAIN MENU BOARD	
	PART #:	MB-DT-46

SCALE 3/4" = 1'

LOCATION:
CULVER'S

SPRINGFIELD SIGN
4825 E. Kearney St.
Springfield, MO 65803
(417) 862-2454

Client:
Culver Franchising
System, Inc.
540 Water Street
Prairie du Sac, WI 53578
p (608) 643-7980

CULVER FRANCHISING SYSTEM, INC.
MB-DT-BASE
MAIN MENU BOARD
SIDE VIEW

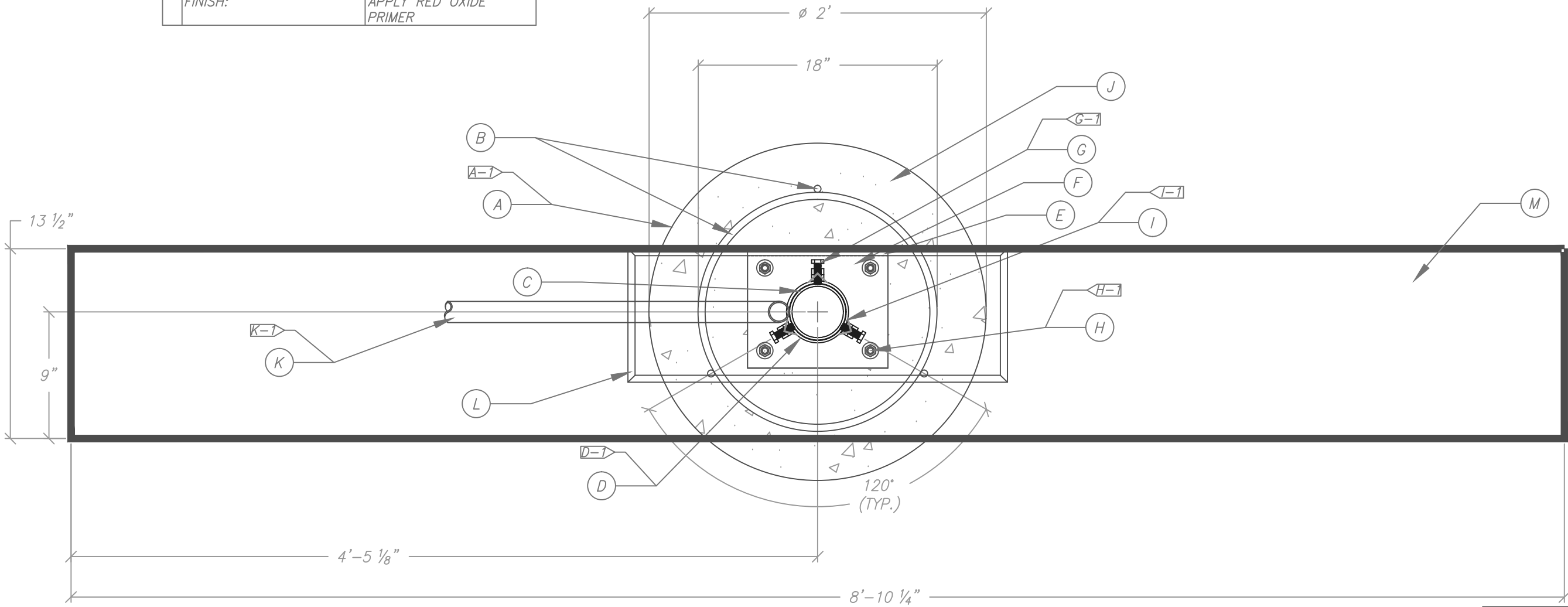
Project Number: 9902
Drawn By: DEN
Reviewed By: MW
Date: 7-25-17
Sheet Number:

2 OF 5

DRIVE-THROUGH/MAIN MENU BOARD		
Ⓐ	AUGER	
	SIZE:	24" UNLESS OTHERWISE DETERMINED BY ENGINEERING/CODE REQUIREMENTS
	A-1	NO OVERDIG WILL BE ALLOWED. THE SOIL REMAINING OUTSIDE OF THE DIMENSIONAL LIMITS OF THE AUGERED HOLE IS TO REMAIN UNDISTURBED.
Ⓑ	REBAR REINFORCING	
	SIZE:	#4'S UNLESS OTHERWISE DETERMINED BY ENGINEERING/CODE REQUIREMENTS
	SPACING:	TO BE DETERMINED ON SITE BY ENGINEER
Ⓒ	STEEL PIPE	
	MATERIAL:	3 1/2" SCHEDULE 40
	FINISH:	SAND SMOOTH APPLY RED OXIDE PRIMER

Ⓓ	STEEL PIPE	
	MATERIAL:	4" SCHEDULE 40
	FINISH:	SAND SMOOTH APPLY RED OXIDE PRIMER
	D-1	WELDED TO MOUNTING PLATE ALL THE WAY AROUND-2 PLACES
Ⓔ	OUTSIDE BASE MOUNTING PLATE	SEE SHEET 5
	MATERIAL:	5/8" PLATE STEEL
Ⓕ	INSIDE BASE MOUNTING PLATE	SEE SHEET 5
	MATERIAL:	5/8" PLATE STEEL
Ⓖ	PIPE BOLTS	
	MATERIAL:	1/2" x 1 3/4" BOLTS / NUTS
	G-1	6 PLACES

Ⓗ	MOUNTING PLATE BOLTS	
	MATERIAL:	1/2" x 2 1/2" BOLTS / NUTS / WASHERS
	H-1	4 PLACES
Ⓘ	BASE PIPE SUPPORT	
	MATERIAL:	1" STEEL ANGLE-3 PLACES
	I-1	WELDED TO BASE PIPE
⓵	BACKFILL	
	MATERIAL:	2500 PSI CONCRETE OR AS PER ENGINEERING
Ⓚ	ELECTRICAL PRIMARY	
	K-1	CONDUIT, SWEEP THROUGH FOOTING
Ⓛ	SIGN SKIRT	
	MATERIAL:	0.063" ROUTED ALUMINUM
Ⓜ	MAIN MENU BOARD	
	PART #:	MB-DT-46



SCALE 1/8" = 1"

LOCATION:
CULVER'S

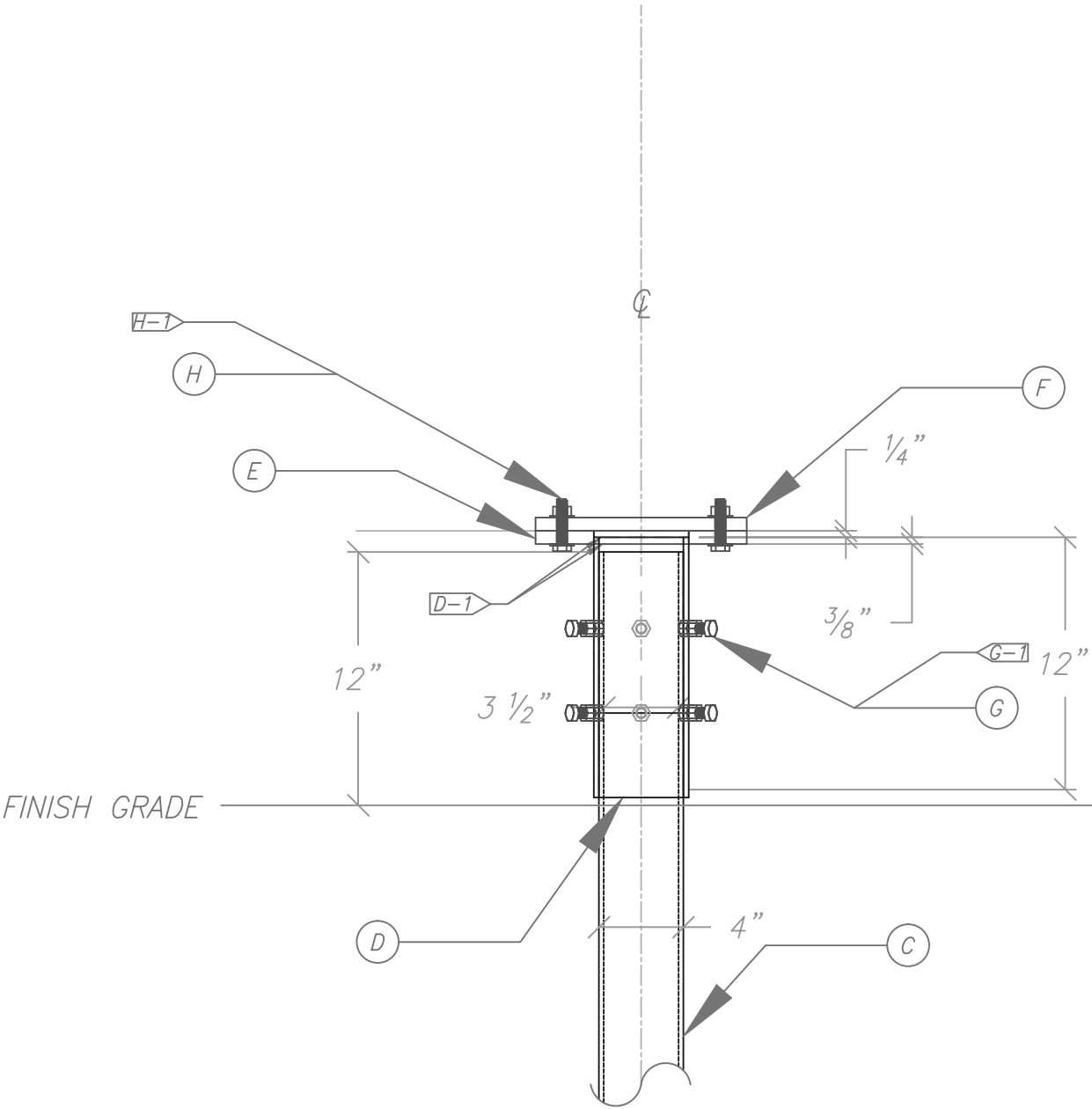
SPRINGFIELD SIGN
4825 E. Kearney St.
Springfield, MO 65803
(417) 862-2454

Client:
Culver Franchising
System, Inc.
540 Water Street
Prairie du Sac, WI 53578
p (608) 643-7980

CULVER FRANCHISING SYSTEM, INC.
MB-DT-BASE
MAIN MENU BOARD
TOP VIEW

Project Number: 9902
Drawn By: DEN
Reviewed By: MW
Date: 7-25-17
Sheet Number:

3 OF 5



DRIVE-THROUGH/MAIN MENU BOARD	
Ⓒ STEEL PIPE	
MATERIAL:	3 1/2" SCHEDULE 40
FINISH:	SAND SMOOTH APPLY RED OXIDE PRIMER
Ⓓ STEEL PIPE	
MATERIAL:	4" SCHEDULE 40
FINISH:	SAND SMOOTH APPLY RED OXIDE PRIMER
D-1	WELDED TO MOUNTING PLATE ALL THE WAY AROUND-2 PLACES
Ⓔ OUTSIDE BASE MOUNTING PLATE	SEE SHEET 5
MATERIAL:	5/8" PLATE STEEL
Ⓕ INSIDE BASE MOUNTING PLATE	SEE SHEET 5
MATERIAL:	5/8" PLATE STEEL
Ⓖ PIPE BOLTS	
MATERIAL	1/2" x 1 3/4" BOLTS / NUTS
G-1	6 PLACES
Ⓗ MOUNTING PLATE BOLTS	
MATERIAL:	1/2" x 2 1/2" BOLTS / NUTS / WASHERS
H-1	4 PLACES

SCALE 1/8" = 1"

LOCATION:
CULVER'S

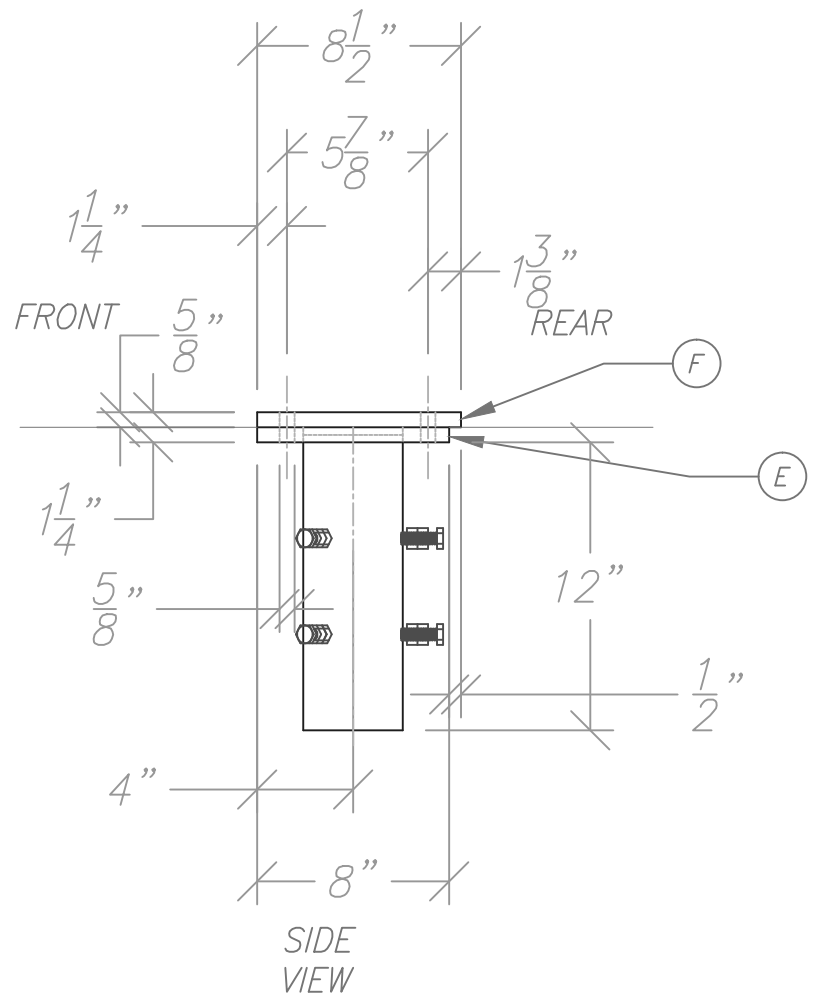
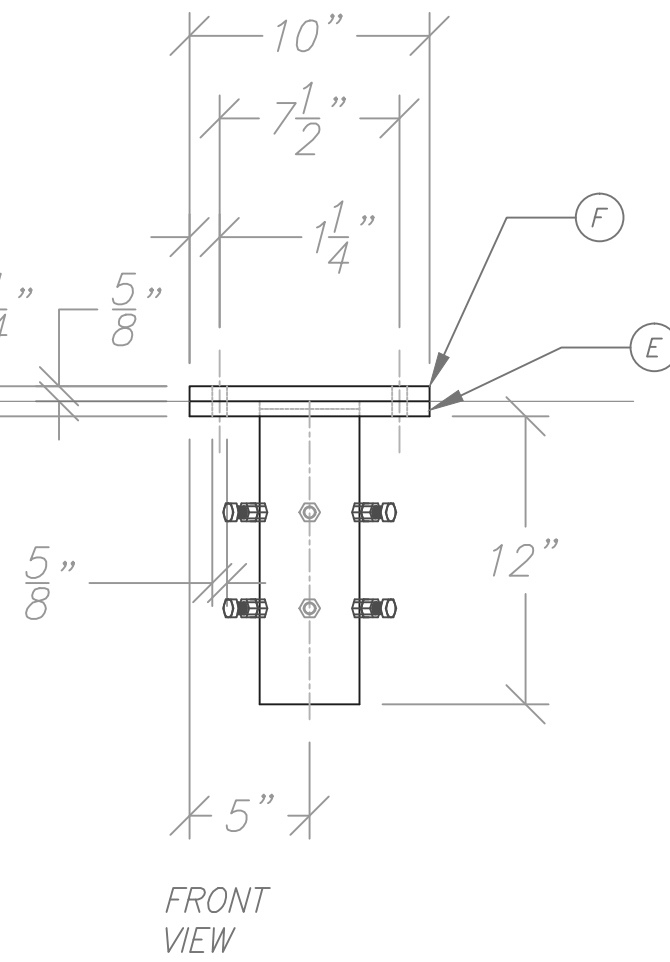
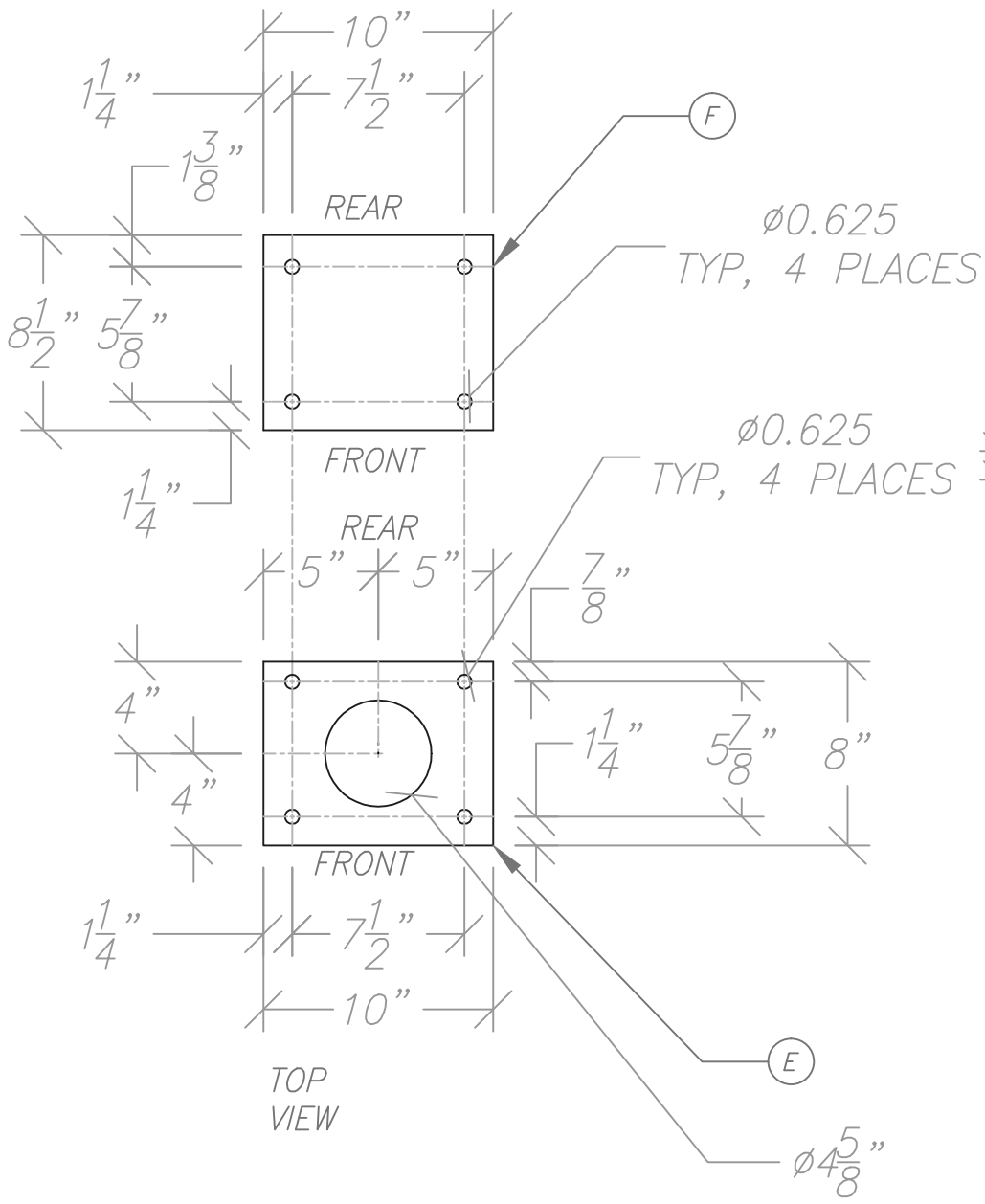
SPRINGFIELD SIGN
4825 E. Kearney St.
Springfield, MO 65803
(417) 862-2454

Client:
Culver Franchising
System, Inc.
540 Water Street
Prairie du Sac, WI 53578
p (608) 643-7980

CULVER FRANCHISING SYSTEM, INC.
DRIVE-THROUGH/MAIN MENU BOARD
SIGN BASE
DETAIL A

Project Number: 9902
Drawn By: DEN
Reviewed By: MW
Date: 7-25-17

Sheet Number:
4 OF 5



DRIVE-THROUGH/MAIN MENU BOARD	
E	OUTSIDE BASE MOUNTING PLATE
	MATERIAL: 5/8" PLATE STEEL
F	INSIDE BASE MOUNTING PLATE
	MATERIAL: 5/8" PLATE STEEL

SCALE 1/8" = 1"

LOCATION:

CULVER'S

Client:

Culver Franchising System, Inc.

4825 E. Kearney St.

Springfield, MO 65803

(417) 862-2454

Project Number: 9902

Drawn By: DEN

Reviewed By: MW

Date: 7-25-17

CULVER FRANCHISING SYSTEM, INC.

DRIVE-THROUGH/MAIN MENU BOARD

BASE MOUNTING PLATES

SIGN BASE-DETAIL

5 OF 5

**APPLICATION FOR SIGN PERMIT
VILLAGE OF OREGON
117 SPRING STREET
OREGON, WI 53575**

DATE: 8/30, 2022
PERMIT NO. _____

FEE \$ 438.69
RECEIPT NO. 1.090327

FEES: RESIDENTIAL OR COMMERCIAL
\$25.00 for the first 20 square feet and \$.50/square foot thereafter.

PROPERTY ADDRESS: 117 Spring Street 1075 Park St.
OREGON, WI

BOND ATTACHED _____
(FOR COST OVER \$1,000.00)

TO THE ZONING INSPECTOR:

The undersigned hereby applies for a permit to build, construct, remove or install according to the following statement and as more fully described in the plans herewith filed as required under Sec. 17.27.

OWNER Village of Oregon ADDRESS 117 Spring Daytime Tel No. _____

PARCEL NO. 050912202441 LOT 10 BLOCK 2 SUBDIVISION _____

OCCUPATION _____ ZONE OR DISTRICT: EBB ☐ RES: ☒ COMM: ☐ IND: ☐ AGR:

TYPE OF CONSTRUCTION: ☐ WOOD ☐ METAL ☐ OTHER _____

TYPE OF SIGN: ☒ LIGHTED ☐ NON-LIGHTED: ☐ TEMP: ☒ PERMANENT
☒ GROUND: ☒ HANGING ON FACADE OR BUILDING

FEET WIDE: See FEET LONG: attached SQUARE FEET: breakdown

ESTIMATED COST: \$55627.70

****A DETAILED SITE PLAN IS REQUIRED. BUILDING ELEVATIONS ARE ALSO REQUIRED IF THIS APPLICATION INCLUDES A FAÇADE SIGN.****

DATE APPLICATION APPROVED: September 7, 2022

APPROVED BY: _____
ZONING INSPECTOR

IT IS HEREBY AGREED between the undersigned as owner, his agent or servant, and the Village of Oregon, that for and in consideration of the premises and of the permit to construct, erect, remove or install as above described, to be issued and granted by the Zoning Inspector, and that the work thereon will be done in accordance with the description herein set forth in this statement and as more fully described in the specifications and plans herewith filed; and it is further agreed to construct, erect, remove or install in strict compliance with the Sign Ordinance of the Village of Oregon; and to obey any and all lawful orders of the Zoning Inspector, made or issue by virtue of the provisions of said ordinance.

DATE: 8/30/2022 _____ 200 _____

BY: Alicia Walton, AGENT/OWNER

ADDRESS: 4825 Kearney St Springfield MO 65803

shared (G:)/admin/permit application/sign permit application



SPRINGFIELD SIGN

design | build | install | service

ADDRESS

4825 E Kearney St
Springfield, MO 65803

CONTACT US

800.845.9927
springfieldsign.com

Culver's Signage Breakdown

117 Spring Street

Oregon, WI 53575

North Elevation

SL-30 LED Illuminated Channel Letters 44.37" x 94.50" = **29.12**

\$29.56

West Elevation

SL-45 LED Illuminated Channel Letters 56" x 120" = **46.67**

\$38.34

South Elevation

SL-30 LED Illuminated Channel Letters 44.37" x 94.50" = **29.12**

\$29.56

East Elevation

SL-30 LED Illuminated Channel Letters 44.37" x 94.50" = **29.12**

\$29.56

BB-1 NON Illuminated 17.67" x 27.88" = **3.42**

\$25.00

Directional Signs

DIR 1 LED Illuminated 27 7/8" x 16 3/4" = **3.2** *no permit required
for directional signs*

Vehicle Height Detector

NON Illuminated Clearance Panel – 40" x 5" = **1.39**

\$25.00

Drive Thru Canopy

Please see attached artwork 



Menu Boards

MB-DT-46 106 1/4" x 62 3/4" = **46.29** (TWO TOTAL)

\$38.15

\$38.15



SPRINGFIELD SIGN

design | build | install | service

ADDRESS

4825 E Kearney St
Springfield, MO 65803

CONTACT US

800.845.9927
springfieldsign.com

Freestanding Sign

ME-35 Oval LED Illuminated 4'6" x 7' 6" = **26.51** (mathematical)

\$37.02

PE-80 EMC Electronic Message Center 2'5" x 7' 3" = **17.52** (mathematical)

Wall Mural

384.0" x 80.0" = **213.33**

\$121.50

SPT-1 Slim Push Thru Cabinet sign

284.50 x 12" = **23.70**

\$24.85

TOTAL = \$438.69



SIGN PACKAGE PROPOSAL

NEW BUILD

PRESENTED TO:

Culver's
117 Spring Street
Oregon, WI 53575

DATE PREPARED:

4/7/22 - Preliminary
4/22/22 - REV - Update elevations, add slim cabinets, add new VHD-2
8/11/22 - REV - Elevation update



SPRINGFIELD SIGN

www.springfieldsign.com



© 2020 Springfield Sign & Graphics Inc., Springfield Sign

MB-DT-46 EXTERIOR MENU BOARD

OREGON, WI

Blue Outdoor Drive-Thru Menu Board

MB-DT-46

Standard Menu Board for Drive-Thru Lane

LED Internal Illumination

POP Graphic panels must be purchased separately

POP-Out magnet access panels included for easy in & out of POP panels

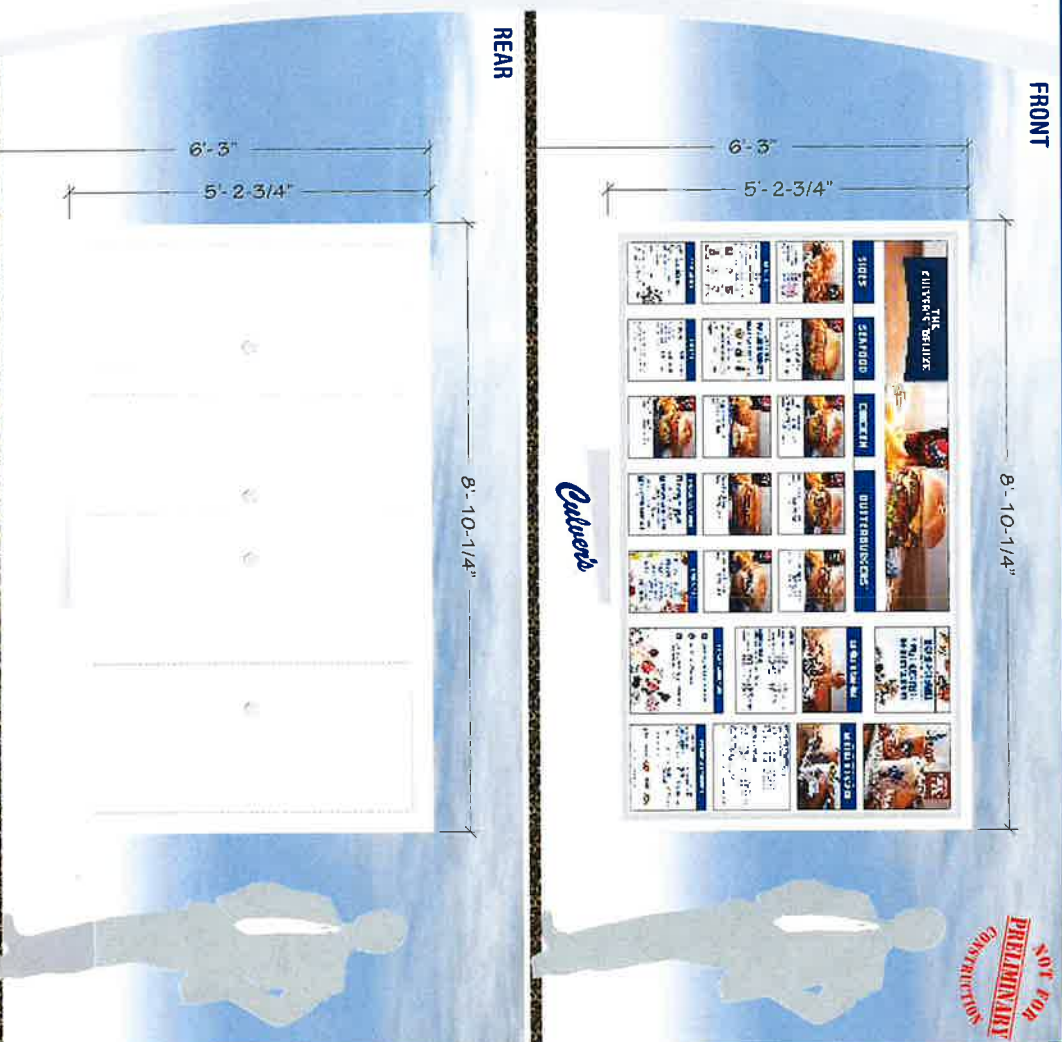
"-GS" option for 160mph coastal wind standards available

Locking rear access doors (4)

Culver's

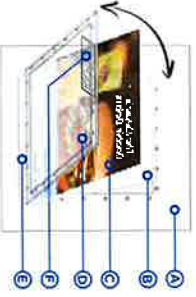
SCALE: 3/8" = 1'

*SCALE AND COLORS NOT REPRESENTATIVE FROM EMAIL ATTACHMENTS
ALL MEASUREMENTS ARE APPROXIMATE

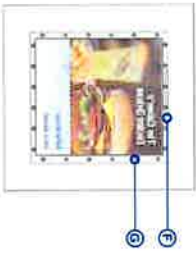


POP-Out Point of Purchase Panel System

INTERIOR VIEW OF MENU BOARD
PANEL BEING REMOVED



PANEL IN PLACE



- A - INSIDE BACK OF MENU BOARD FACE (ONLY ONE PANEL SHOWN FOR CLARITY)
- B - FRONT PANEL IS ANTI-GLARE (CLEAR) FOR INCREASED VISIBILITY
- C - POP PANEL - PRODUCT GRAPHIC
- D - REAR PANEL - PRODUCT GRAPHIC
- E - SUPPORTING "TIP TRAY" FOR PANELS (SELF ALIGNING)
- F - POP-OUT TAB HANDLE
- G - PAIRED MAGNETIC "LATCH" (MAGNETS EMBEDDED IN POP-OUT PANEL & BACK OF MENU BOARD)

SALES PERSON: MARK WESSELL
DESIGNED BY: JKROEGER
AO: 30505

DATE CREATED / REVISION HISTORY
4/17/22 - NEW

© 2020 Springfield Sign & Graphics Inc. Springfield Sign
This drawing is Copyrighted material. It remains the property of Springfield Sign unless otherwise agreed upon in writing. It is unlawful to use this drawing for
bidding purposes, nor can it be reproduced, copied or used in the production of a sign without written permission from Springfield Sign & Graphics.
This is an artistic rendering and final colors & sizes may vary from that depicted here to.



SPRINGFIELD SIGN
www.springfieldsign.com

MB-DT-46 EXTERIOR MENU BOARD

OREGON, WI

Blue Outdoor Drive-Thru Menu Board

MB-DT-46

Standard Menu Board for Drive-Thru Lane

LED Internal Illumination

POP Graphic panels must be purchased separately

POPP-Out magnet access panels included for easy in & out of POP panels

"CS" option for 160mph coastal wind standards available

Locking rear access doors (4)

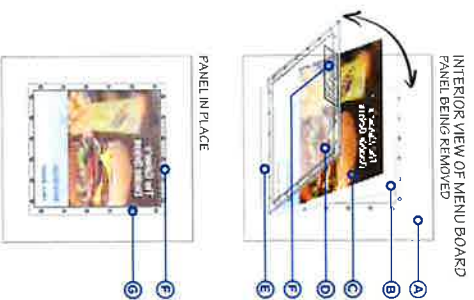
Culver's



SCALE 3/8" = 1'

*SCALE AND COLORS NOT REPRESENTATIVE FROM EMAIL ATTACHMENTS
ALL MEASUREMENTS ARE APPROXIMATE

POPP-Out Point Of Purchase Panel System



- A - INSIDE BACK OF MENU BOARD FACE (ONLY ONE PANEL SHOWN FOR CLARITY)
- B - FRONT PANEL IS ANTI-GLARE (CLEAR) FOR INCREASED VISIBILITY
- C - POP PANEL - PRODUCT GRAPHIC
- D - REAR PANEL FITTED WITH POPP-OUT PANEL
- E - SUPPORTING "TIP TRAY" FOR PANELS (SELF ALIGNING)
- F - POPP-OUT TAB HANDLE
- G - PAIRED MAGNETIC "LATCH" (MAGNETS EMBEDDED IN POPP-OUT PANEL & BACK OF MENU BOARD)

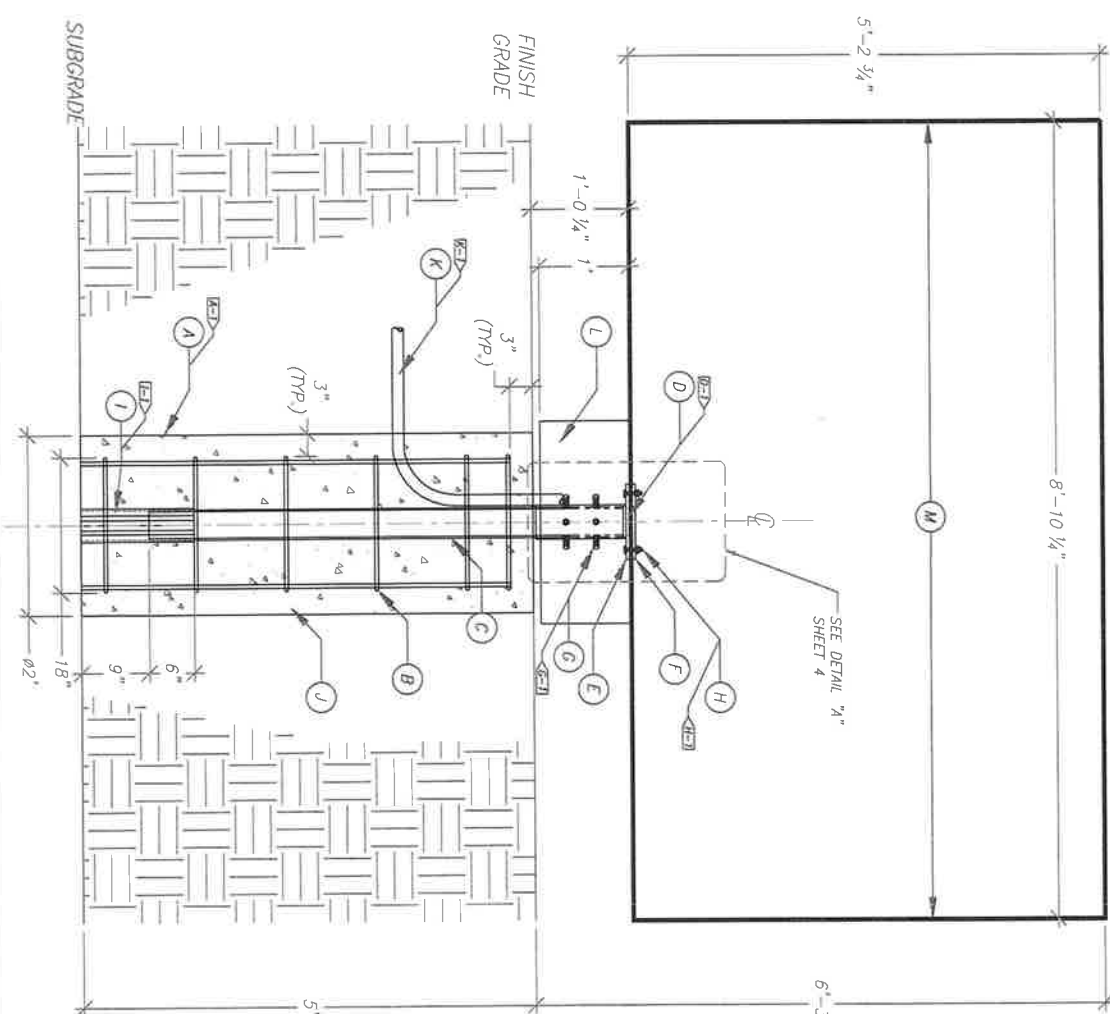
SALES PERSON: MARK WESSLELL
DESIGNED BY: J. KROEGER
AO: 36595

DATE CREATED / REVISION HISTORY
4/17/22 - NEW

© 2020 Springfield Sign & Graphics Inc., Springfield Sign
This drawing is Copyrighted material. It remains the property of Springfield Sign unless otherwise agreed upon in writing. It is unlawful to use this drawing for advertising purposes, nor can it be reproduced, copied or used in the production of a sign without written permission from Springfield Sign & Graphics.
This is an artistic rendition and final colors / sizes may vary from what is depicted herein.



SPRINGFIELD SIGN
www.springfieldsign.com



DRIVE-THROUGH MENU BOARD	
1 AUGER	24" UNLESS OTHERWISE DETERMINED BY ENGINEERING/CODE REQUIREMENTS
2 SIZE:	NO OVERLAP WILL BE ALLOWED. THE SOIL REMAINING OUTSIDE OF THE DIMENSIONAL LIMITS OF THE AUGERED HOLE IS TO REMAIN UNDISTURBED.
3 4-1	
4 REBAR REINFORCING	#4'S UNLESS OTHERWISE DETERMINED BY ENGINEERING/CODE REQUIREMENTS TO BE DETERMINED ON SITE BY ENGINEER
5 SPACING:	
6 STEEL PIPE	3 1/2" SCHEDULE 40
7 MATERIAL:	SAND SMOOTH
8 FINISH:	APPLY RED OXIDE PRIMER
9 STEEL PIPE	4" SCHEDULE 40
10 MATERIAL:	SAND SMOOTH
11 FINISH:	APPLY RED OXIDE PRIMER
12 D-1	WELDED TO MOUNTING PLATE ALL THE WAY AROUND-2 PLACES
13 OUTSIDE BASE MOUNTING PLATE	SEE SHEET 5
14 MATERIAL:	3/8" PLATE STEEL
15 INSIDE BASE MOUNTING PLATE	SEE SHEET 5
16 MATERIAL:	3/8" PLATE STEEL
17 PIPE BOLTS	1/2" x 1 1/2" BOLTS / NUTS
18 MATERIAL:	6 PLACES
19 G-1	
20 MOUNTING PLATE BOLTS	1/2" x 2 1/2" BOLTS / NUTS / WASHERS
21 MATERIAL:	4 PLACES
22 H-1	
23 BASE PIPE SUPPORT	1" STEEL ANGLE-3 PLACES
24 MATERIAL:	WELDED TO BASE PIPE
25 J-1	
26 BACKFILL	2500 PSI CONCRETE OR AS PER ENGINEERING
27 MATERIAL:	
28 ELECTRICAL PRIMARY	CONDUIT, SWEET THROUGH FOOTING
29 K-1	
30 SIGN SHORT	D.O.S.T. ROUTED
31 MATERIAL:	ALUMINUM
32 MAIN MENU BOARD	MB-DT-46

SCALE 3/4" = 1'

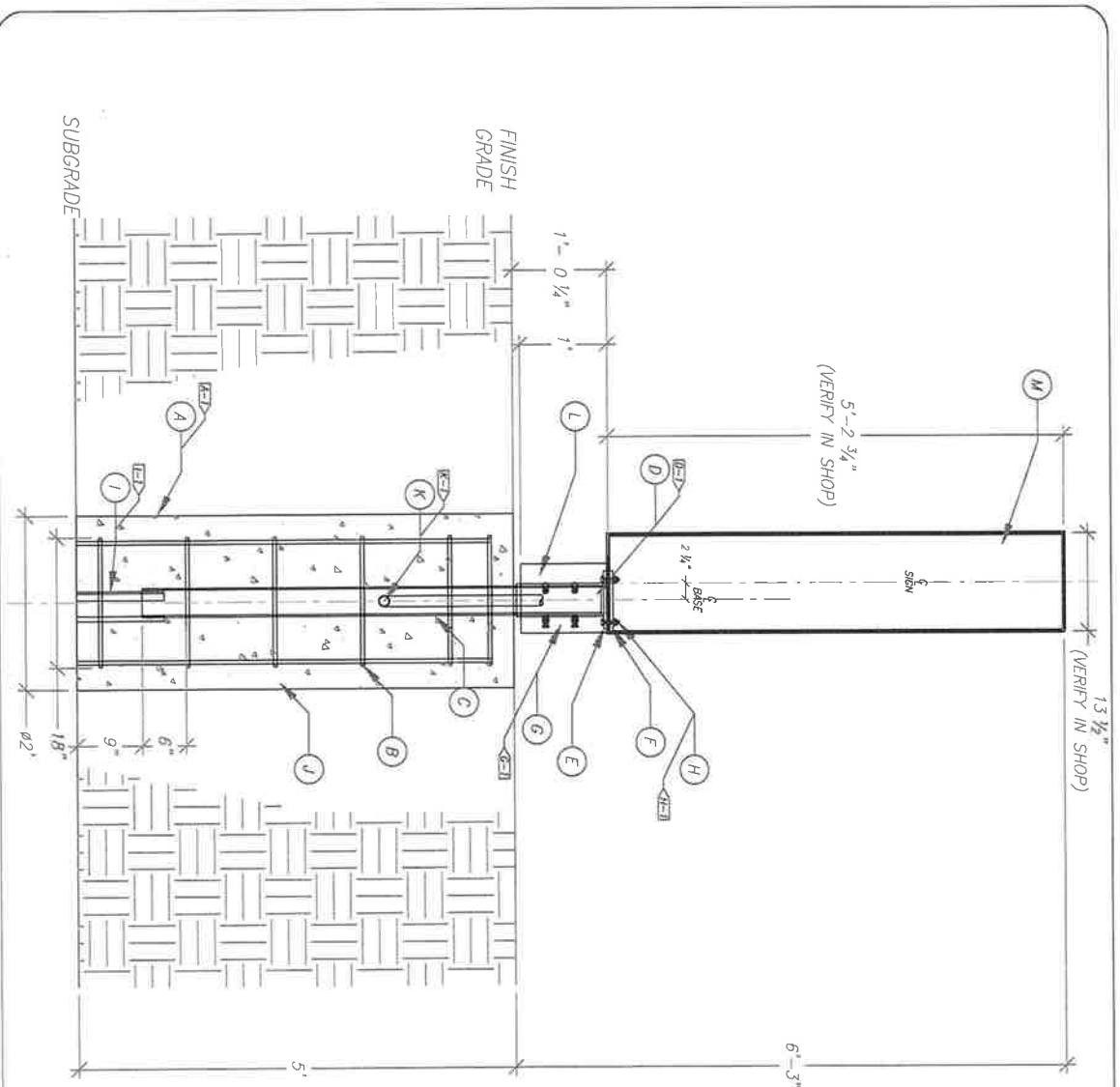
LOCATION:
OREGON, WI

Project Number: 36595
Drawn By: DEN
Reviewed By: NW
Date: 8/30/22
Sheet Number:
1 OF 5

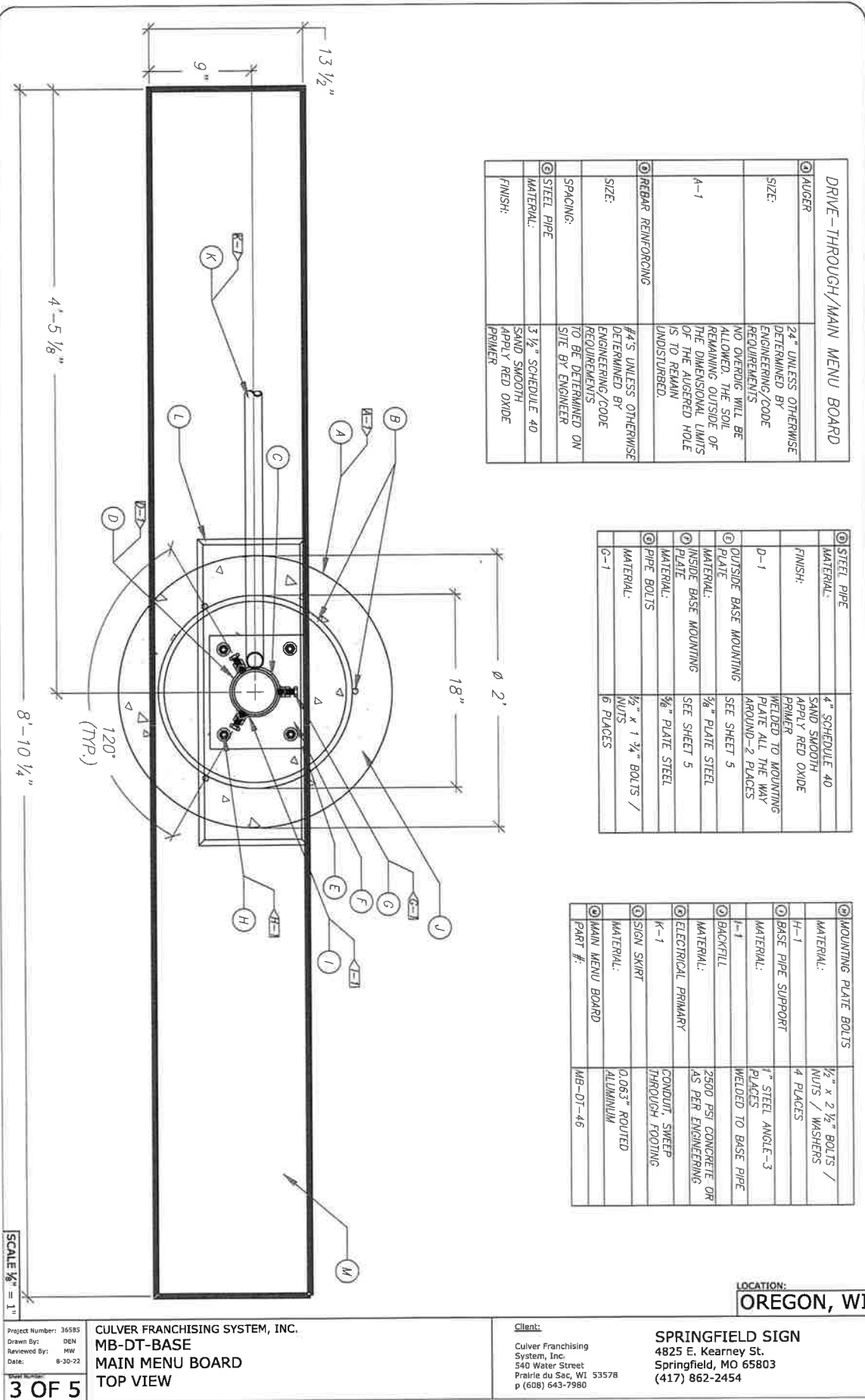
CULVER FRANCHISING SYSTEM, INC.
MB-DT-BASE
MAIN MENU BOARD
FRONT VIEW

Client:
Culver Franchising
System, Inc.
540 Water Street
Prairie du Sac, WI 53578
p (608) 643-7980

SPRINGFIELD SIGN
4825 E. Kearney St.
Springfield, MO 65803
(417) 862-2454



DRIVE-THROUGH MENU BOARD	
② AUGER	24" UNLESS OTHERWISE DETERMINED BY ENGINEERING/CODE REQUIREMENTS
SIZE:	NO OVERING WILL BE ALLOWED. THE SOIL REMAINING OUTSIDE OF THE DIMENSIONAL LIMITS OF THE AUGERED HOLE IS TO REMAIN UNDISTURBED.
A-1	
③ REBAR REINFORCING	1/4" UNLESS OTHERWISE DETERMINED BY ENGINEERING/CODE REQUIREMENTS
SIZE:	TO BE DETERMINED ON SITE BY ENGINEER
SPACING:	
④ STEEL PIPE	1 1/2" SCHEDULE 40
MATERIAL:	SAFETY RED OXIDE PRIMER
FINISH:	
⑤ STEEL PIPE	4" SCHEDULE 40
MATERIAL:	SAFETY RED OXIDE PRIMER
FINISH:	
D-1	WELDED TO MOUNTING PLATE ALL THE WAY AROUND-2 PLACES
⑥ OUTSIDE BASE MOUNTING PLATE	SEE SHEET 5
MATERIAL:	1/4" PLATE STEEL
⑦ INSIDE BASE MOUNTING PLATE	SEE SHEET 5
MATERIAL:	1/4" PLATE STEEL
⑧ PIPE BOLTS	1/2" x 1 1/2" BOLTS / NUTS
MATERIAL:	6 PLACES
G-1	
⑨ MOUNTING PLATE BOLTS	1/2" x 2 1/2" BOLTS / NUTS / WASHERS
MATERIAL:	4 PLACES
H-1	
⑩ BASE PIPE SUPPORT	1" STEEL ANGLE-3 PLACES
MATERIAL:	WELDED TO BASE PIPE
I-1	
⑪ BASE PIPE	2500 PSI CONCRETE OR AS PER ENGINEERING
MATERIAL:	
J-1	
⑫ ELECTRICAL PRIMARY	CONDUIT, SWEEP THROUGH FOOTING
K-1	
⑬ SIGN SKIRT	20 GA. POLYESTER ALUMINUM
MATERIAL:	
⑭ MAIN MENU BOARD	MB-DT-46
PART #:	

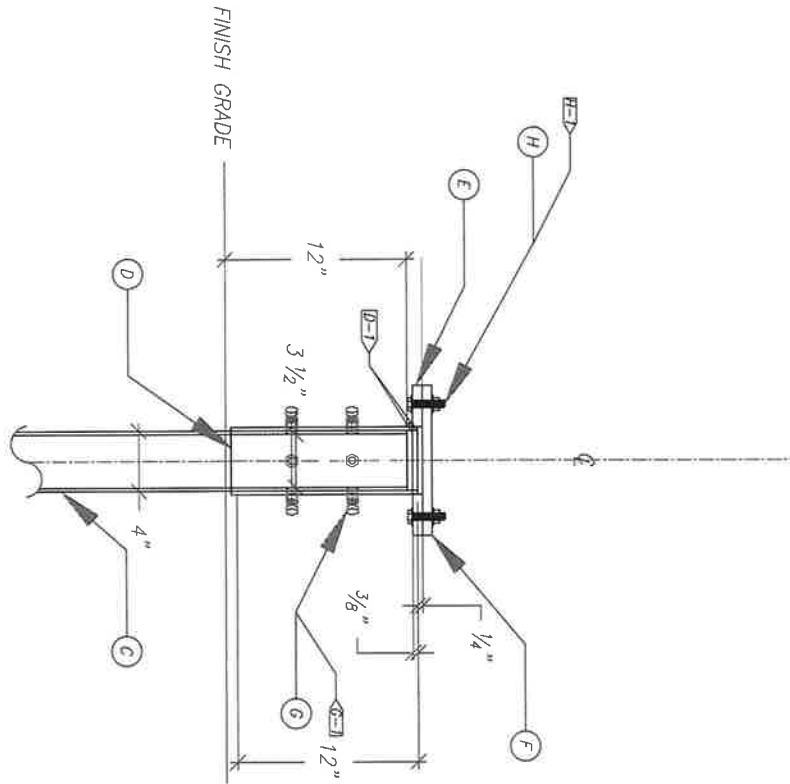


DRIVE-THROUGH/MAIN MENU BOARD	
① AUGER	24" UNLESS OTHERWISE DETERMINED BY ENGINEERING/CODE REQUIREMENTS
SIZE:	NO OVERLAP WILL BE ALLOWED. THE SOIL REMAINING OUTSIDE OF THE DIMENSIONAL LIMITS OF THE AUGERED HOLE IS TO REMAIN UNDISTURBED.
A-1	
② REBAR REINFORCING	#4'S UNLESS OTHERWISE DETERMINED BY ENGINEERING/CODE REQUIREMENTS
SIZE:	TO BE DETERMINED ON SITE BY ENGINEER
SPACING:	
③ STEEL PIPE	3 1/2" SCHEDULE 40
MATERIAL:	SAND SMOOTH
FINISH:	APPLY RED OXIDE PRIMER

④ STEEL PIPE	4" SCHEDULE 40
MATERIAL:	SAND SMOOTH
FINISH:	APPLY RED OXIDE PRIMER
D-1	WELDED TO MOUNTING PLATE ALL THE WAY AROUND 2 PLACES
⑤ OUTSIDE BASE MOUNTING PLATE	SEE SHEET 5
MATERIAL:	3/8" PLATE STEEL
⑥ INSIDE BASE MOUNTING PLATE	SEE SHEET 5
MATERIAL:	3/8" PLATE STEEL
⑦ PIPE BOLTS	1/2" x 1 3/4" BOLTS / NUTS
G-1	6 PLACES

⑧ MOUNTING PLATE BOLTS	1/2" x 2 1/2" BOLTS / NUTS / WASHERS
MATERIAL:	4 PLACES
H-1	
⑨ BASE PIPE SUPPORT	1" STEEL ANGLE-3 PLACES
MATERIAL:	WELDED TO BASE PIPE
I-1	
⑩ BACKTILL	2500 PSI CONCRETE OR AS PER ENGINEERING
MATERIAL:	CONDUIT, SWEEP THROUGH FOOTING
K-1	
⑪ SIGN SKIRT	0.063" ROUTED ALUMINUM
MATERIAL:	
⑫ MAIN MENU BOARD	MB-DT-46
PART #:	

LOCATION:
OREGON, WI



DRIVE-THROUGH/MAIN MENU BOARD	
STEEL PIPE	3 1/2" SCHEDULE 40
MATERIAL:	SAND SMOOTH
FINISH:	APPLY RED OXIDE
STEEL PIPE	4" SCHEDULE 40
MATERIAL:	SAND SMOOTH
FINISH:	APPLY RED OXIDE
D-1	WELDED TO MOUNTING PLATE ALL THE WAY AROUND-2 PLACES
OUTSIDE BASE MOUNTING PLATE	SEE SHEET 5
MATERIAL:	3/8" PLATE STEEL
INSIDE BASE MOUNTING	SEE SHEET 5
MATERIAL:	3/8" PLATE STEEL
PIPE BOLTS	3/8" x 1 1/2" BOLTS / NUTS
G-1	6 PLACES
MOUNTING PLATE BOLTS	3/8" x 2 1/2" BOLTS / NUTS / WASHERS
H-1	4 PLACES

SCALE 1/8" = 1"

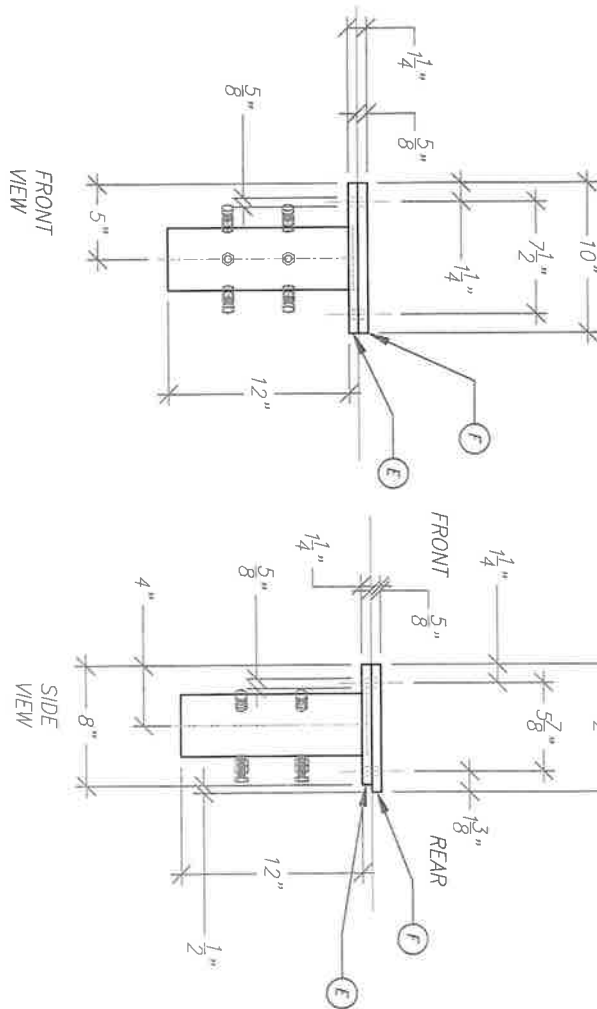
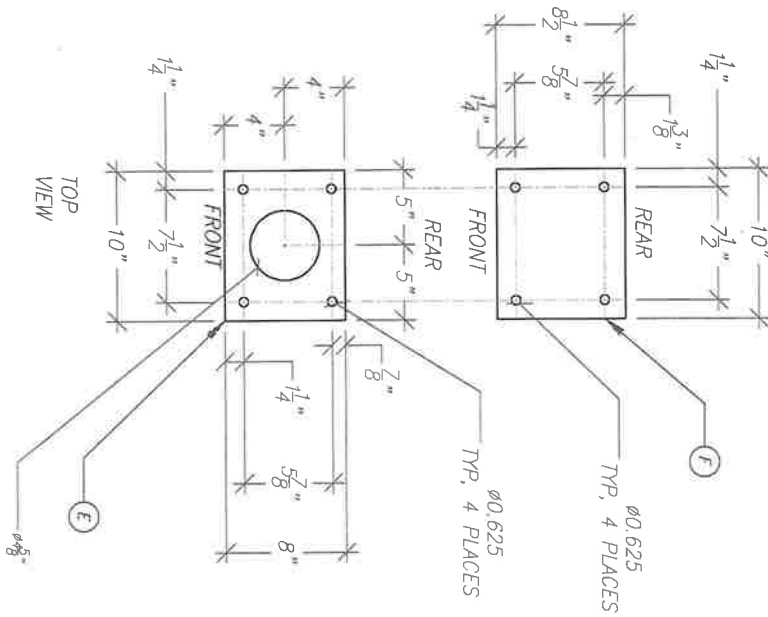
LOCATION:
OREGON, WI

Project Number: 35585
 Drawn By: DEN
 Reviewed By: HW
 Date: 8-30-22
 4 OF 5

CULVER FRANCHISING SYSTEM, INC.
 DRIVE-THROUGH/MAIN MENU BOARD
 SIGN BASE
 DETAIL A

Client:
 Culver Franchising
 System, Inc.
 540 Water Street
 Prairie du Sac, WI 53578
 p (608) 643-7980

SPRINGFIELD SIGN
 4825 E. Kearney St.
 Springfield, MO 65803
 (417) 862-2454



DRIVE-THROUGH/MAIN MENU BOARD	
① OUTSIDE BASE MOUNTING PLATE	
MATERIAL:	3/8" PLATE STEEL
② INSIDE BASE MOUNTING PLATE	
MATERIAL:	3/8" PLATE STEEL

LOCATION:
OREGON, WI

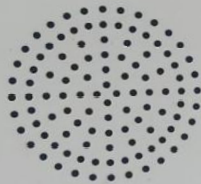
SCALE 1/8" = 1"

Project Number: 36585
Drawn By: DEN
Reviewed By: 188
Date: 6-30-22
5 OF 5

CULVER FRANCHISING SYSTEM, INC.
DRIVE-THROUGH/MAIN MENU BOARD
BASE MOUNTING PLATES
SIGN BASE-DETAIL

Client:
Culver Franchising
System, Inc.
540 Water Street
Prairie du Sac, WI 53578
p (608) 643-7980

SPRINGFIELD SIGN
4825 E. Kearney St.
Springfield, MO 65803
(417) 862-2454



Customers With Speech
Or Hearing Difficulties
Please Pull Up To The
Next Open Window For
Assistance In Ordering.

Food Allergy?

Please be advised that any of our products may contain, or may have come in contact with food allergens including eggs, fish, milk, peanuts, shellfish, soy, tree nuts and wheat. For ingredient information please visit McDonalds.com.



Drive Thru Code
12 34

**Provide your
code now
to earn free food**

**ORDER
HERE**

Customers With
Speech Or Hearing
Difficulties Please
Pull Up To The Next
Open Window For
Assistance In
Ordering.

Thank you.

Clientes con
dificultades
auditivas o del habla
favor de pasar a la
proxima ventanilla
abierta para ayudarle
con su orden.
Gracias.

Grab a McCrispy™ meal

DELICIOUS
McCrispy™ meal \$10.99-10.99 Cal.

Combo Meals

1 Big Mac®
\$6.99-6.99 Cal.
\$10.99-10.99 Cal.

2 Quarter Pounder™
\$5.99-5.99 Cal.
\$10.99-10.99 Cal.

3 Double Quarter Pounder™
\$10.99-10.99 Cal.
\$10.99-10.99 Cal.

4 McChicken™
\$5.99-5.99 Cal.
\$10.99-10.99 Cal.

5 10 pc. Chicken McNuggets™
\$5.99-5.99 Cal.
\$10.99-10.99 Cal.

6 Fish-O-Fish®
\$5.99-5.99 Cal.
\$10.99-10.99 Cal.

7 2 Cheeseburgers
\$5.99-5.99 Cal.
\$10.99-10.99 Cal.

McCafé®

Cinnamon Roll
\$2.99-2.99 Cal.
\$10.99-10.99 Cal.

Ice Cream
\$2.99-2.99 Cal.
\$10.99-10.99 Cal.

Frappé®
\$2.99-2.99 Cal.
\$10.99-10.99 Cal.

Smoothie
\$2.99-2.99 Cal.
\$10.99-10.99 Cal.

Premium Roast Coffee
\$1.99-1.99 Cal.
\$10.99-10.99 Cal.

Sides & More
Double Cheeseburger
\$1.99-1.99 Cal.
\$10.99-10.99 Cal.

Sweets & Treats
Sundae
\$1.99-1.99 Cal.
\$10.99-10.99 Cal.

\$1 \$2 \$3 Dollar Menu
Any Size Soft Drink
\$1.99-1.99 Cal.
\$10.99-10.99 Cal.

Happy Meal®
4 pc. Chicken McNuggets™
\$1.99-1.99 Cal.
\$10.99-10.99 Cal.

Fan Favorite
Medium Caramel Frappé®
\$2.99-2.99 Cal.
\$10.99-10.99 Cal.

Grab a McCrispy™ meal

DELICIOUS
McCrispy™ meal \$10.99-10.99 Cal.

Combo Meals

1 Big Mac®
\$6.99-6.99 Cal.
\$10.99-10.99 Cal.

2 Quarter Pounder™
\$5.99-5.99 Cal.
\$10.99-10.99 Cal.

3 Double Quarter Pounder™
\$10.99-10.99 Cal.
\$10.99-10.99 Cal.

4 McChicken™
\$5.99-5.99 Cal.
\$10.99-10.99 Cal.

5 10 pc. Chicken McNuggets™
\$5.99-5.99 Cal.
\$10.99-10.99 Cal.

6 Fish-O-Fish®
\$5.99-5.99 Cal.
\$10.99-10.99 Cal.

7 2 Cheeseburgers
\$5.99-5.99 Cal.
\$10.99-10.99 Cal.

McCafé®

Cinnamon Roll
\$2.99-2.99 Cal.
\$10.99-10.99 Cal.

Ice Cream
\$2.99-2.99 Cal.
\$10.99-10.99 Cal.

Frappé®
\$2.99-2.99 Cal.
\$10.99-10.99 Cal.

Smoothie
\$2.99-2.99 Cal.
\$10.99-10.99 Cal.

Premium Roast Coffee
\$1.99-1.99 Cal.
\$10.99-10.99 Cal.

Sides & More
Double Cheeseburger
\$1.99-1.99 Cal.
\$10.99-10.99 Cal.

Sweets & Treats
Sundae
\$1.99-1.99 Cal.
\$10.99-10.99 Cal.

\$1 \$2 \$3 Dollar Menu
Any Size Soft Drink
\$1.99-1.99 Cal.
\$10.99-10.99 Cal.

Happy Meal®
4 pc. Chicken McNuggets™
\$1.99-1.99 Cal.
\$10.99-10.99 Cal.

Fan Favorite
Medium Caramel Frappé®
\$2.99-2.99 Cal.
\$10.99-10.99 Cal.



Drive Thru

Grab a McCrispy meal

\$1.99

Buy One, Get One

Provide your code to earn & redeem points

My Rewards

12 34

Drive Thru



Grab a McCrispy™ meal

\$1.99 each

Frozen™ Soft™ Lemonade
Frozen Fanta™
Frozen Coca-Cola™

OREO™ Frappe

Buy One, Get One for \$1

McDonald's

Provide your code to earn & redeem points

MyMcDonald's Rewards

Drive Thru Code
12 34



Drive
Clear

SECURITY

608. 351. 3030

Provide
your code
to earn &
redeem points!

Provide
your code
to earn &
redeem points!

Drive-Thru
Clearance 9 Feet

SECUREST

608.351.3030

Provide
your code
to enter &
receive your
order

Provide
your code
to enter &
receive your
order



Culver's
HONEY BUTTER
BUTTERBURGERS

BACON DELUXE
The only way our Deluxe could get better was by adding Bacon.

SANDWICHES & TENDERS

VALUE BASKETS
Combo & Side Entree & Side & Drink

BUTTERBURGERS

CONCRETE MIXERS

HAND-CRAFTED
Vanilla

SWEET TREATS
ALWAYS MADE WITH REAL DAIRY

MIXERS, SHAKES & MALTS

CONCRETE MIXERS*

SHAKES & MALTS

SUNDAES, CONES & DISHES

CONES

CREATE YOUR OWN DISH

CLASSIC SUNDAES

MIX-INS & TOPPINGS

FLAVOR OF THE DAY
ANDES MINT AVALANCHE

NEW DIPPING SAUCES

\$3.35

STOP
Please Place Order Here

FROM OUR Family TO YOURS
SMALL SHAKES \$3.49 Any Flavor

UPGRADE YOUR MIXER
\$1.50 \$2.00

Confirm Order Here

