

December 22, 2025

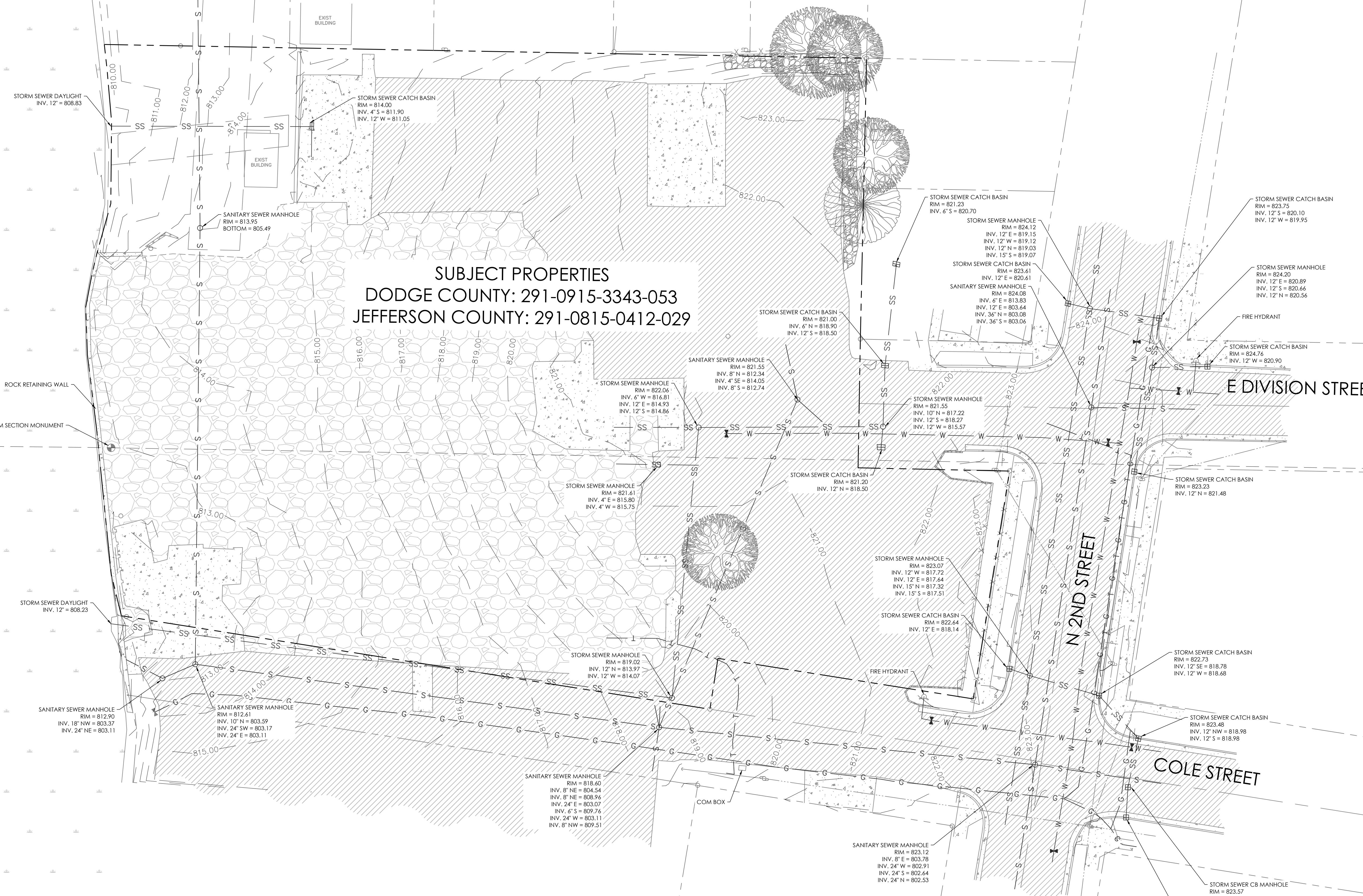
P:\2024-CONTRACTS\2024-171 Oxbow Apartments\Phase - 2\Construction Documents\3.3 Site\2024-171 - Base.dwg

DODGE COUNTY
JEFFERSON COUNTY

ROCK RIVER

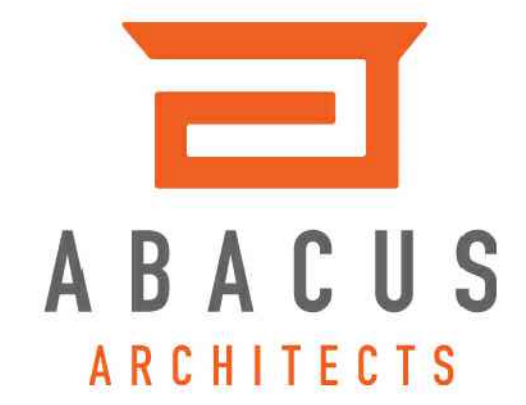
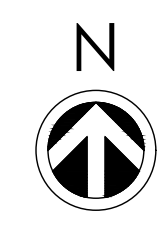
ROCK RETAINING WALL
ALUMINUM SECTION MONUMENT

SUBJECT PROPERTIES
DODGE COUNTY: 291-0915-3343-053
JEFFERSON COUNTY: 291-0815-0412-029



EXISTING CONDITIONS

SCALE: 1"=20'



REVISIONS:		
△	DATE	ISSUE

NOTICE TO BIDDERS
BIDDERS SHALL REVIEW ALL DRAWINGS AND SPECIFICATION SECTIONS TO DETERMINE THE IMPACT OF OTHER SECTIONS OF WORK ON THEIR OWN WORK
© 2024 ABACUS ARCHITECTS, INC.

ISSUE DATE: DECEMBER 22, 2025
NEW CONSTRUCTION FOR:

OXBOW APARTMENTS

100 E DIVISION ST., WATERTOWN, WI 53098

1135A MICHIGAN AVE., SHEBOYGAN, WI 53081 | (920) 452-4444 | 640 N. VEL R. PHILIPS AVE., SUITE 210, MILWAUKEE, WI 53203

FOR REVIEW - NOT FOR CONSTRUCTION

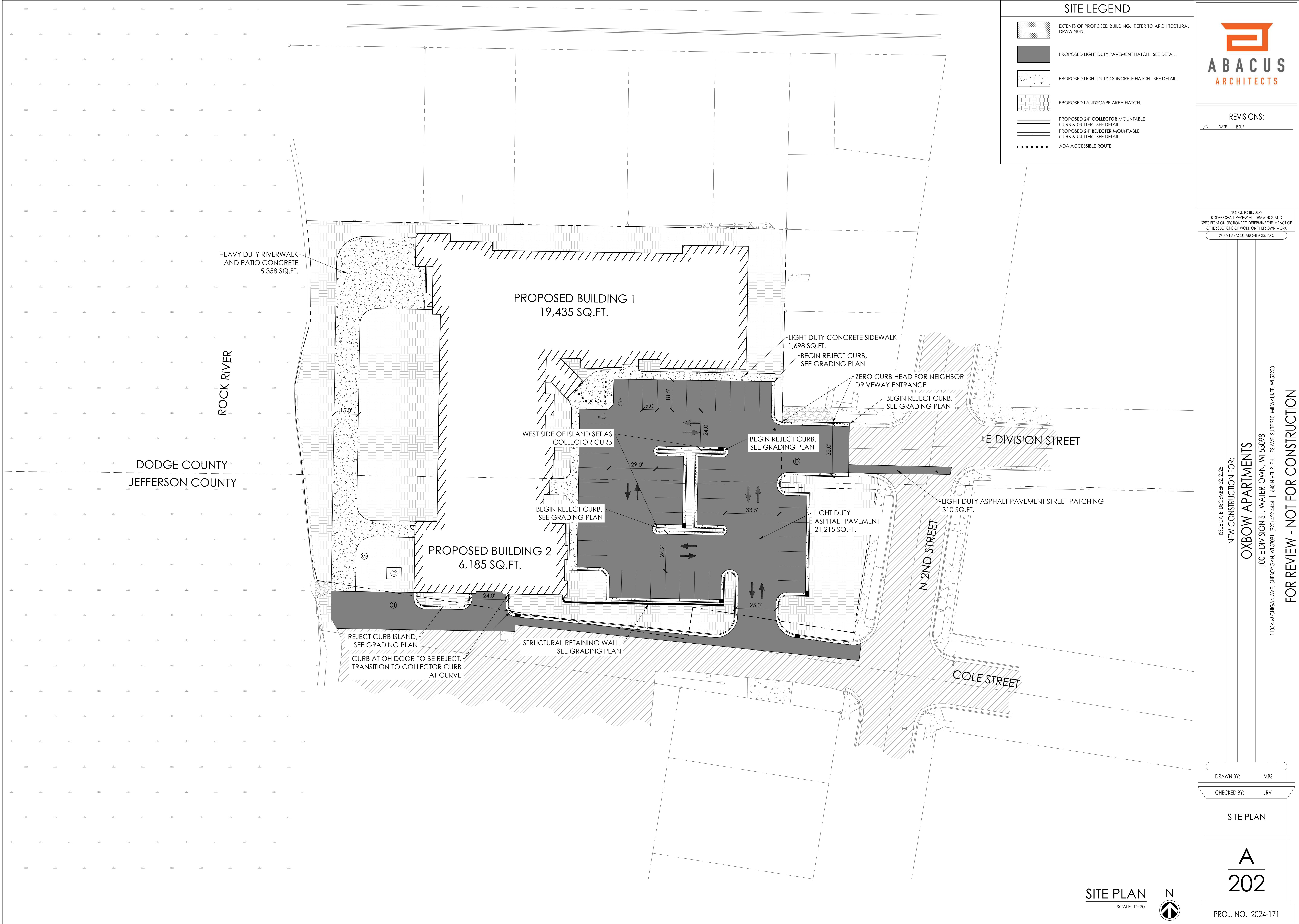
DRAWN BY: MBS
CHECKED BY: JRV

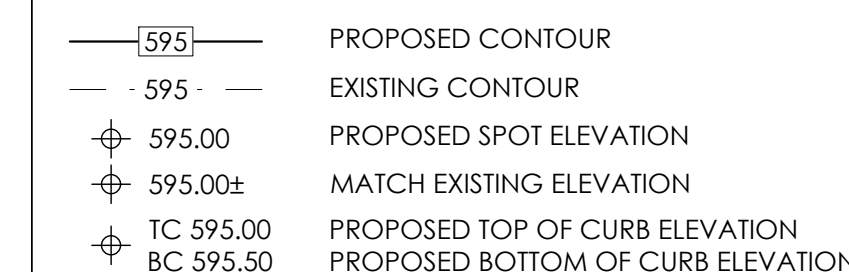
EXISTING
CONDITIONS

A
200
PROJ. NO. 2024-171

December 22, 2025

P:\2024-CONTRACTS\2024-171 Oxbow Apartments\Phase - 2\Construction Documents\3.3 Site\2024-171 - Base.dwg





ROCK RIVER

PROPOSED BUILDING 1
FFE = 825.90
LL = 815.90

SLOPE ASPHALT
PAVEMENT UPWARDS
TO MATCH CURB

PROPOSED BUILDING 2
FFE = 825.90
LL = 815.90

CURB AT OH DOOR TO BE REJECT.
TRANSITION TO COLLECTOR CURB
AT CURVE

GRADING PLAN



REVISIONS:

DATE ISSUE

NOTICE TO BIDDERS
BIDDERS SHALL REVIEW ALL DRAWINGS AND
SPECIFICATION SECTIONS TO DETERMINE THE IMPACT OF
OTHER SECTIONS OF WORK ON THEIR OWN WORK
© 2024 ABACUS ARCHITECTS, INC.

ISSUE DATE: DECEMBER 22, 2025
NEW CONSTRUCTION FOR:

OXBOW APARTMENTS

100 E DIVISION ST. WATERTOWN, WI 53098

1135A MICHIGAN AVE. SHEBOYGAN, WI 53081 | (920) 452-4444 | 640 N VEL R. PHILIPS AVE. SUITE 210, MILWAUKEE, WI 53203

FOR REVIEW - NOT FOR CONSTRUCTION

DRAWN BY: MBS

CHECKED BY: JRV

UTILITY PLAN

A
204

PROJ. NO. 2024-171

UTILITY PLAN

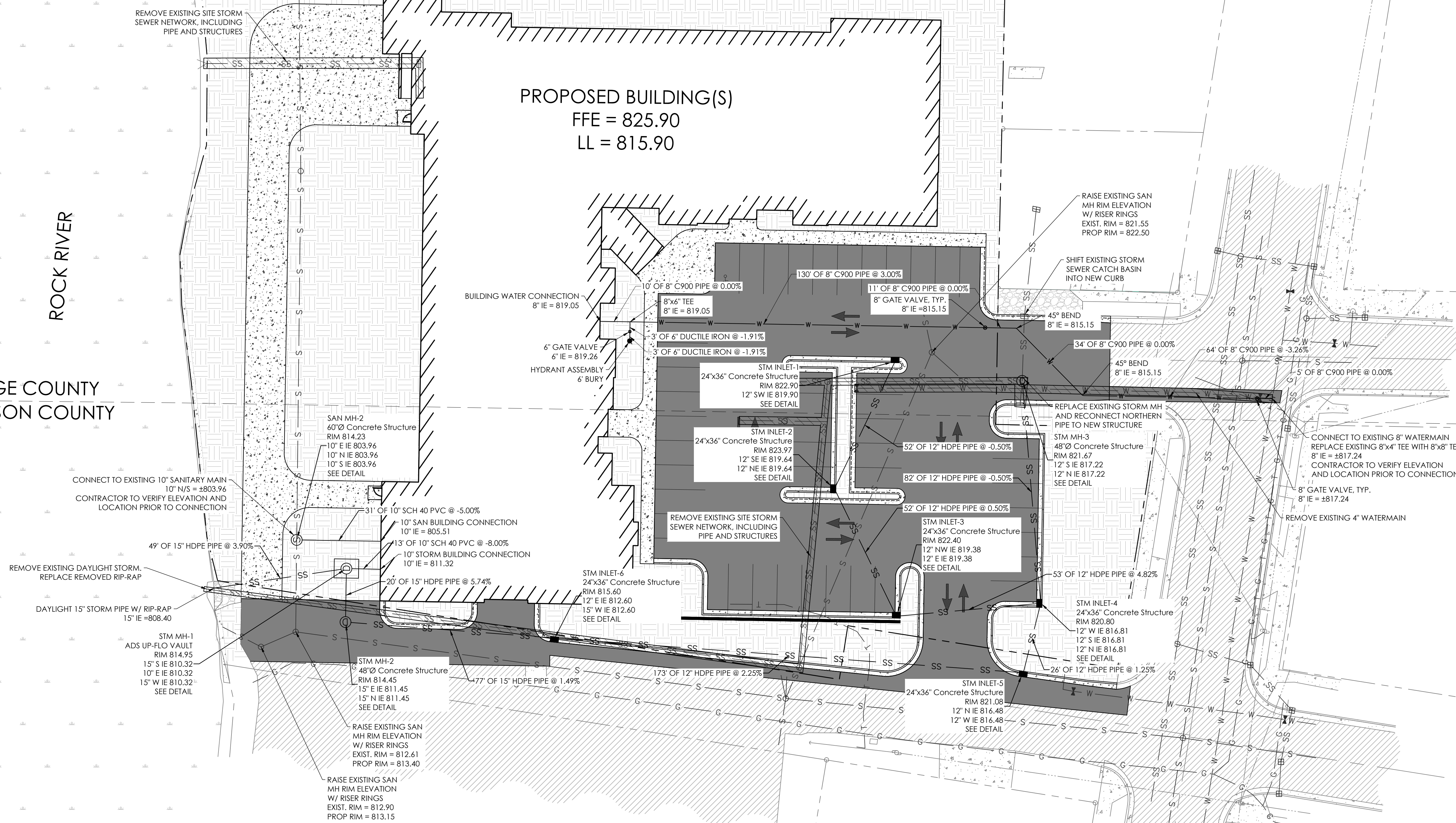
SCALE: 1"=20'



DODGE COUNTY
JEFFERSON COUNTY

ROCK RIVER

PROPOSED BUILDING(S)
FFE = 825.90
LL = 815.90



December 22, 2025

P:\2024-CONTRACTS\2024-171 Oxbow Apartments\Phase - 2\Construction Documents\3.3 Site\2024-171 - Base.dwg

