

## Zoning & Planning April 21<sup>st</sup> 2023:

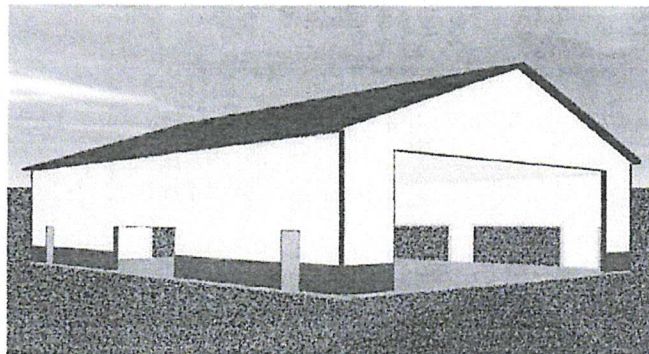
1. Two sets of plans-included.
  - A. No landscape plans. Airport tarmac. In conformance with Airport Commission's Master plan.
  - B. Elevation: 842.9' Grade in accordance with airport requirements. All drainage and utilities already in place and in compliance.
  - C. Building is white with lower blue wainscot. Building is in conformance with architectural controls in place and on file. Site was required as selected by airport manager. Both site and hangar are in accordance with requirements set forth by City and have been approved by the Airport Commission.
2. Entity Operation plan.
  - A. This is a private use hangar for local EAA Chapter #320 use. There are no hours/days of operation, and no employees.
3. Timetable.
  - A. We are looking for a June 1<sup>st</sup> groundbreaking or earlier dependent upon permitting process. Completion date would be before snowfall 2023.
4. Floodplain & Wetlands.
  - A. None known.

Estimate #: 327660  
Design #: 1  
Store: JOHNSON CREEK  
Guest: Trav Hardy

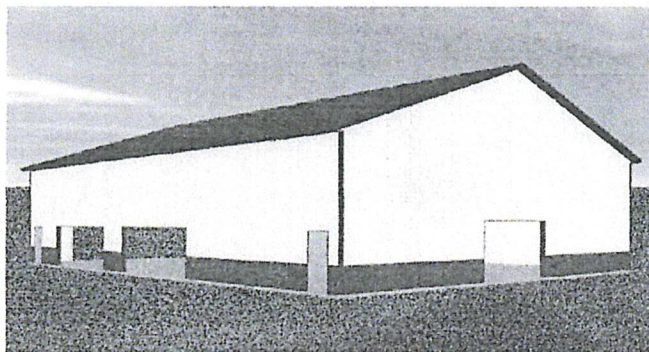


**Post Frame Building Estimate**  
Project Name: AIRPLANE HANGER  
Section: 3D Perspectives  
Date: 02-17-2022 08:46 AM

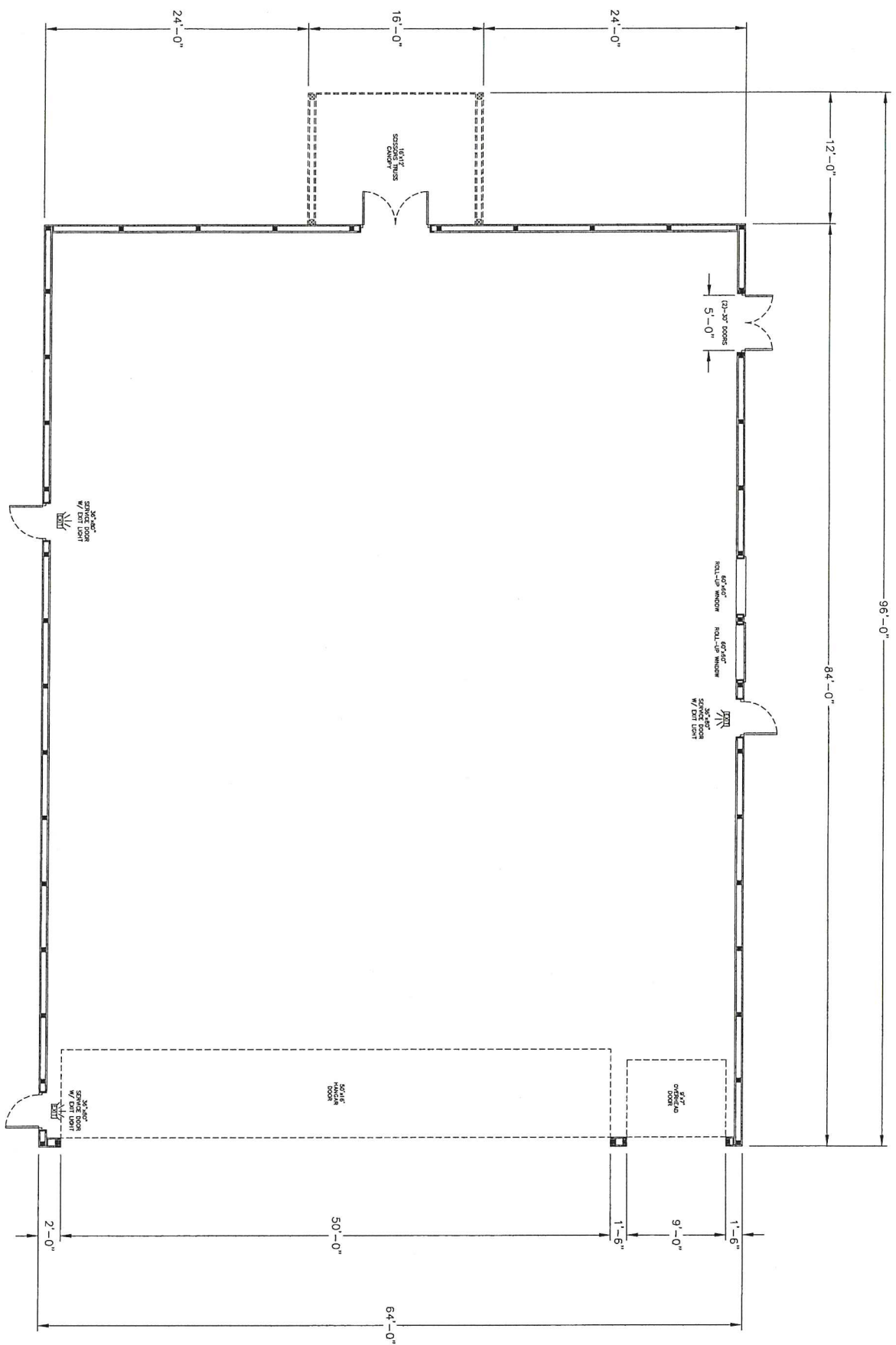
**Front View**



**Back View**



*Color shows approximate tone. Color of actual product may vary from what is pictured due to differences in printing and resolution. Please visit your Menards store to view a steel color sample or request a color sample from Midwest Manufacturing at [steel@midwestmanufacturing.com](mailto:steel@midwestmanufacturing.com)*



# SITE DETAIL

For Proposed Hangar at: 1748 River Drive Watertown, WI 53094

