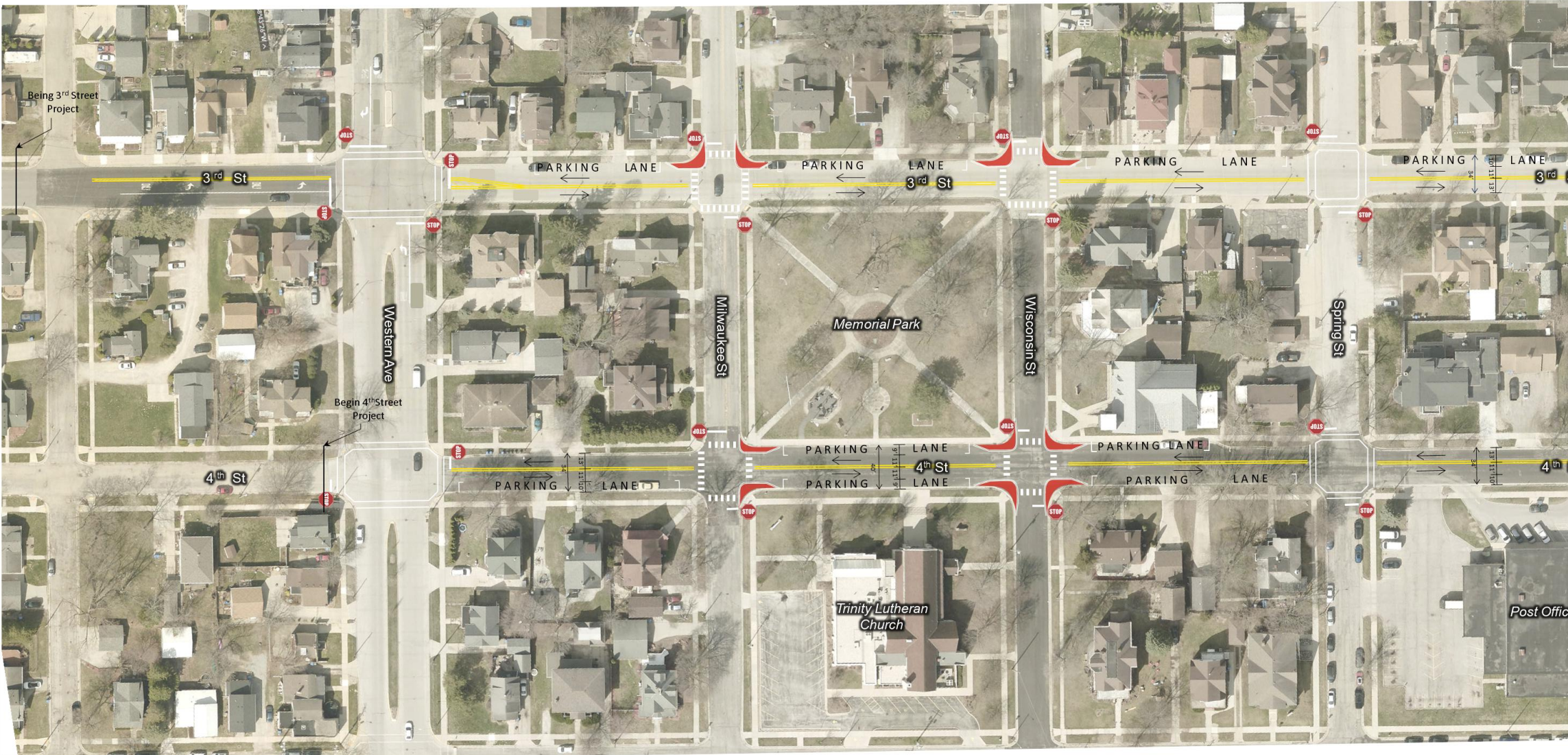


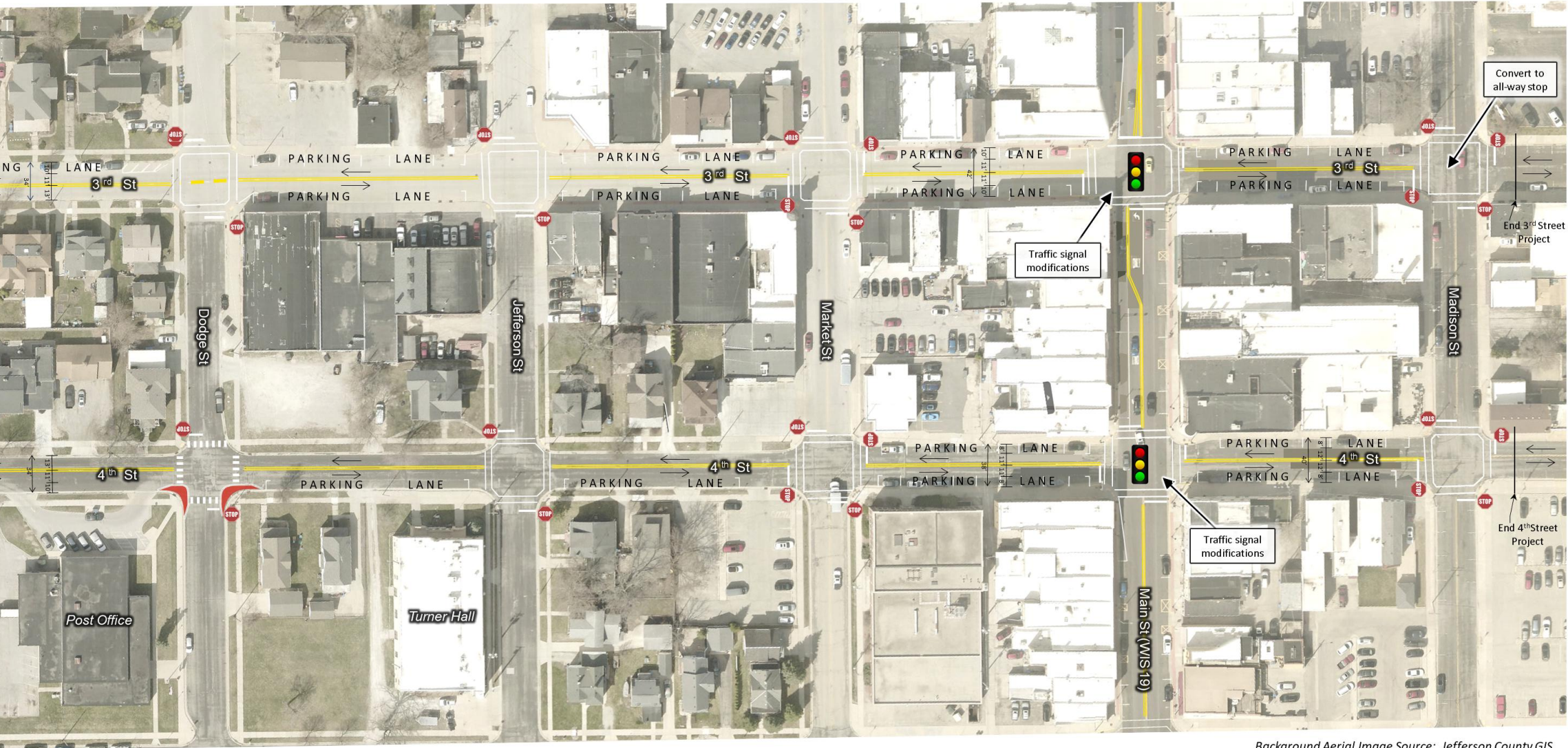
ATTACHMENT #1: One-way to Two-way Conversion Concept Drawing 3rd Street and 4th Street



- Notes:
- Design drawing is conceptual and is not for construction.
 - Street signing (other than traffic control) is not shown on this concept drawing.
 - This concept drawing does not reflect recent improvements near the 3rd St/Western Ave intersection or planned improvements along WIS 19 (WisDOT plans along Main St have not been finalized).

wing

- = Travel Direction
- == = Double-Yellow Centerline
- ▬ = Paint/Post Curb Extension (bump out)
- STOP = Stop Sign
- 🚦 = Traffic Signal



Background Aerial Image Source: Jefferson County GIS
Background Aerial Image Date: 2023