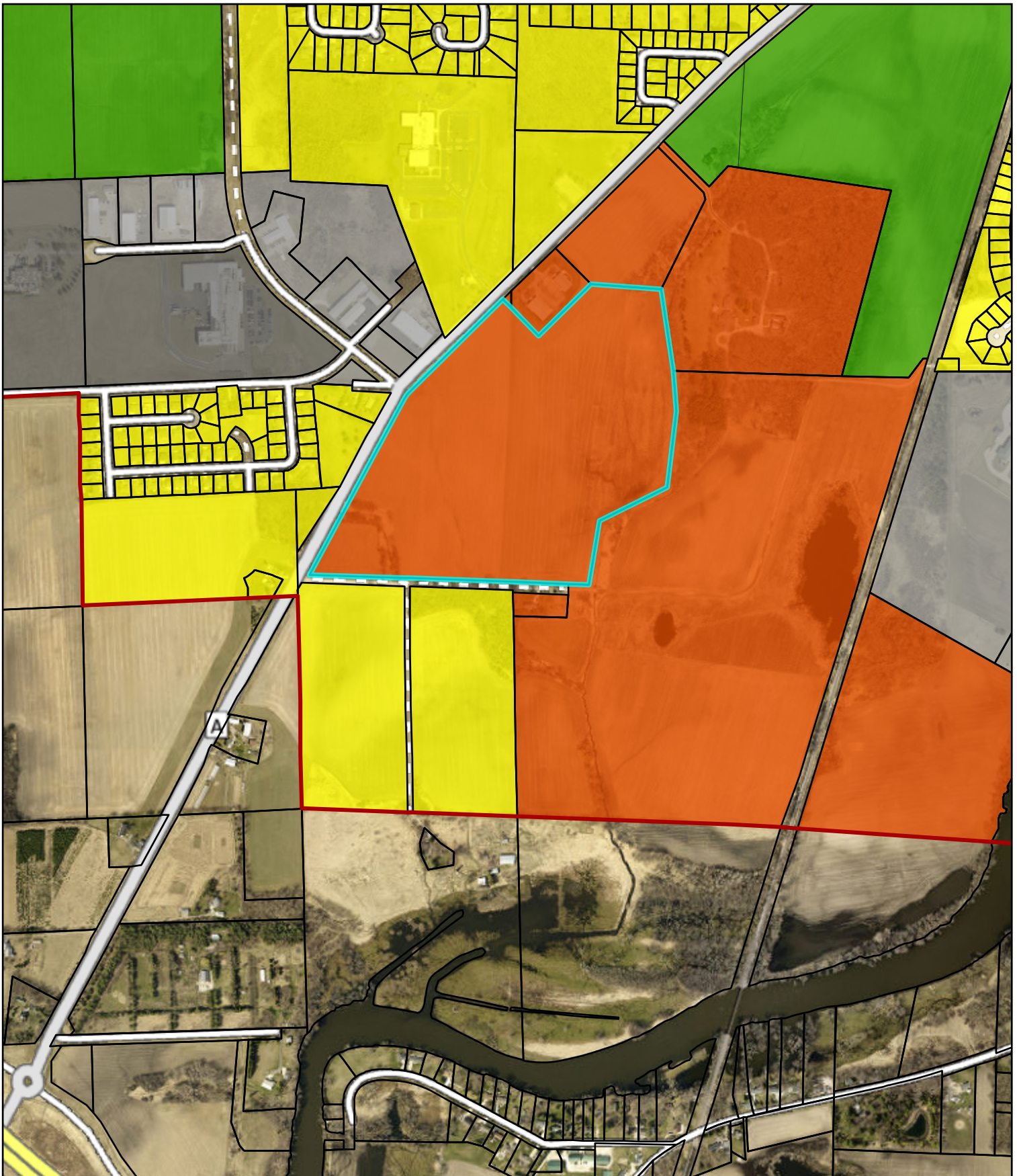


# Milford Street/CTH A Parcel - Zoning



City Boundary	Multi-Family Residential-8	Neighborhood Office	Planned Industrial
Parcel Boundary	Multi-Family Residential-10	Neighborhood Business	General Industrial
<b>Base Zoning</b>	Senior Residential	Planned Business	Heavy Industrial
Single-Family Residential-4	Rural Holding	General Business	
Two-Family Residential-6	Planned Office And Institutional	Central Business District	

**THE CITY OF WATERTOWN**  
*Opportunity runs through it.*

**City of Watertown Geographic Information System**

Scale: 1:9,504  
SCALE BAR = 1"

Printed on: June 18, 2025  
Author:

DISCLAIMER: This map is not a substitute for an actual field survey or onsite investigation. The accuracy of this map is limited to the quality of the records from which it was assembled. Other inherent inaccuracies occur during the compilation process. City of Watertown makes no warranty whatsoever concerning this information.