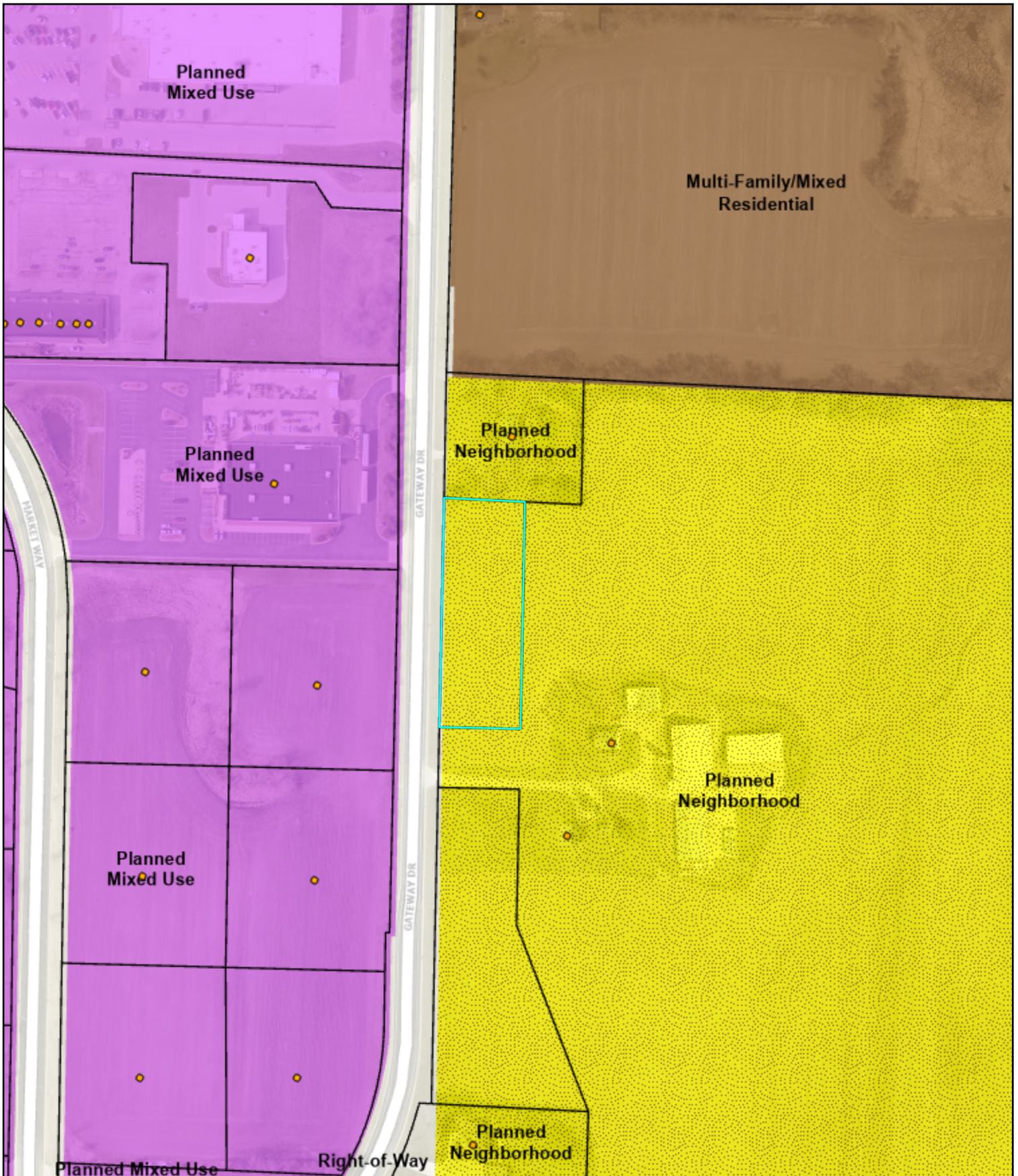


# Gateway Drive Rezone - Existing FLU



**Waterfront Future Land Use 2019 Comp Plan**  
VA\_FLU

Right-of-Way

Surface Water

<span style="border: 1px solid red; display: inline-block; width: 15px; height: 10px;"></span> Municipal Boundary	<span style="background-color: #90EE90; display: inline-block; width: 15px; height: 10px;"></span> Agriculture	<span style="background-color: #FFB6C1; display: inline-block; width: 15px; height: 10px;"></span> Planned Business
<span style="border: 1px solid black; display: inline-block; width: 15px; height: 10px;"></span> Parcels Boundaries	<span style="background-color: #FFFF00; display: inline-block; width: 15px; height: 10px;"></span> Single-Family Residential	<span style="background-color: #8B4513; display: inline-block; width: 15px; height: 10px;"></span> Central Mixed Use
<span style="border: 1px solid gray; display: inline-block; width: 15px; height: 10px;"></span> Common Areas	<span style="background-color: #808000; display: inline-block; width: 15px; height: 10px;"></span> Two-Family/Townhouse Residential	<span style="background-color: #FFDAB9; display: inline-block; width: 15px; height: 10px;"></span> Planned Office & Institutional
<span style="color: blue;">•</span> Addresses	<span style="background-color: #A0522D; display: inline-block; width: 15px; height: 10px;"></span> Multi-Family/Mixed Residential	<span style="background-color: #ADD8E6; display: inline-block; width: 15px; height: 10px;"></span> Airport
	<span style="background-color: #FFD700; display: inline-block; width: 15px; height: 10px;"></span> Planned Neighborhood	<span style="background-color: #ADD8E6; display: inline-block; width: 15px; height: 10px;"></span> Institutional
	<span style="background-color: #FF00FF; display: inline-block; width: 15px; height: 10px;"></span> Planned Mixed Use	<span style="background-color: #D3D3D3; display: inline-block; width: 15px; height: 10px;"></span> Planned Industrial
	<span style="background-color: #DDA0DD; display: inline-block; width: 15px; height: 10px;"></span> Neighborhood Mixed Use	<span style="background-color: #FFB6C1; display: inline-block; width: 15px; height: 10px;"></span> General Business

**THE CITY OF WATERTOWN**  
*Opportunity runs through it.*

**City of Watertown Geographic Information System**

Scale: 1:2,565  
SCALE BAR = 1"

Printed on: December 19, 2025  
Author:

DISCLAIMER: This map is not a substitute for an actual field survey or onsite investigation. The accuracy of this map is limited to the quality of the records from which it was assembled. Other inherent inaccuracies occur during the compilation process. City of Watertown makes no warranty whatsoever concerning this information.