

1
A1.0
Key Plan / Selective Removal Plan
1/16" = 1'-0"

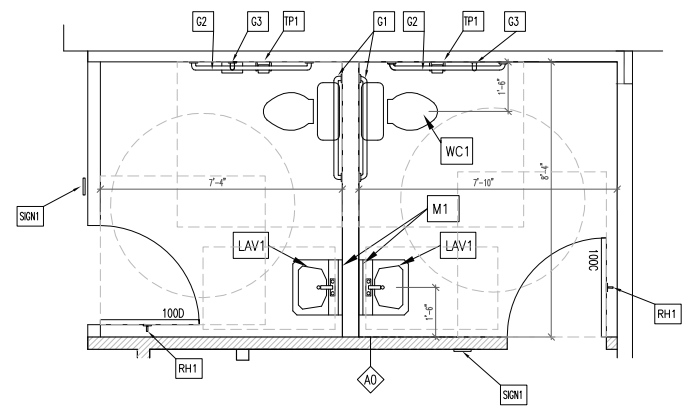
**Keyed Notes-
Existing Conditions / Selective Removal Plan**

- 1 EXISTING BUILDING WALLS TO REMAIN
- 2 EXISTING NON-BEARING PARTITIONS & DOORS TO BE REMOVED
- 3 EXISTING STOREFRONT GLAZINGS TO BE REMOVED TO BE REPLACED WITH NEW STOREFRONT ENTRY DOOR
- 4 EXISTING TOILET ROOMS TO REMAIN. EXISTING FIXTURES & CLEARANCES ARE ACCESSIBLE.
- 5 EXISTING NON-BEARING PARTITION-CUT OPENING FOR NEW DOOR FIELD VERIFY EXACT LOCATION.

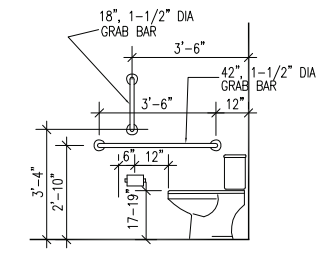
SHT. A1.0

Legend

- WALL TO BE REMOVED
- DOOR TO BE REMOVED
- WINDOW TO BE REMOVED
- EXISTING DOOR TO REMAIN



2
A1.0
Enlarged Toilet Rooms
3/8" = 1'-0"



3
A1.0
Toilet Room Accessibility Standards
3/8" = 1'-0"

**FIXTURES & ACCESSORIES
SCHEDULE**

SEE DETAIL 3/A1.0 FOR MOUNTING LOCATIONS & HEIGHTS

TAG	DESCRIPTION
G1	36" GRAB BAR- 1-1/2" DIA (EXISTING)
G2	42" GRAB BAR- 1-1/2" DIA (EXISTING)
G3	18" GRAB BAR- 1-1/2" DIA
RH1	ROBE HOOK- DOOR MOUNTED
TP1	TOILET PAPER DISPENSER - WALL MOUNTED
LAV1	ADA-ACCESSIBLE WALL-MOUNT LAVATORY (EXISTING)
M1	ADA WALL-MOUNT MIRROR (EXISTING)
WC1	ADA-HEIGHT ELONGATED BOWL TOILET (EXISTING)
SIGN1	ADA-TOILET ROOM SIGNAGE