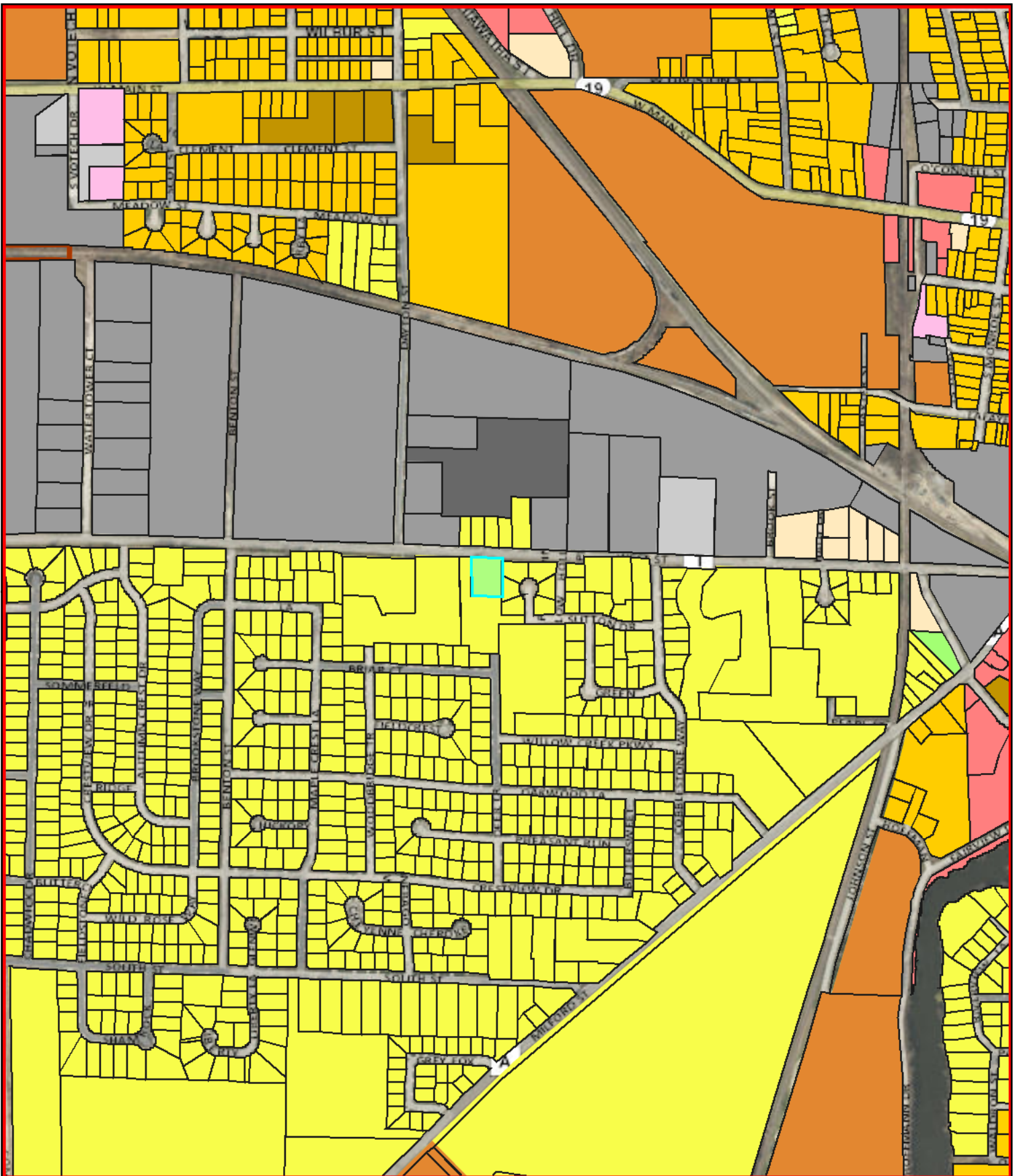


# 833 West Street Zoning



<p><b>Parcels</b></p> <p>Override 1</p> <p>Parcels</p> <p><b>Zoning</b></p> <p>Unknown</p> <p>Two-Family Residential-6</p>	<p>Single-Family Residential-4</p> <p>Senior Residential</p> <p>Rural Holding</p> <p>Planned Unit Development</p> <p>Planned Office And Institutional</p> <p>Planned Industrial</p>	<p>Planned Business</p> <p>Neighborhood Office</p> <p>Neighborhood Business</p> <p>Multiple Zoning</p> <p>Multi-Family Residential-8</p> <p>Multi-Family Residential-10</p>	<p>Heavy Industrial</p> <p>General Industrial</p> <p>General Business</p> <p>Conditional Use</p> <p>Central Business District</p> <p>City Limits</p>	<div data-bbox="1153 1932 1331 1974"> <p>THE CITY OF <b>WATERTOWN</b> <i>Opportunity runs through it.</i></p> </div> <div data-bbox="1153 1974 1429 1995"> <p><b>City of Watertown Geographic Information System</b></p> </div> <div data-bbox="1153 1995 1380 2037"> <p><b>Scale:</b> 1 inch = 800 feet <b>SCALE BAR = 1"</b></p> </div> <div data-bbox="1396 1995 1542 2026"> <p>Printed on: September 22, 2022 Author: Private User</p> </div> <div data-bbox="1153 2037 1494 2079"> <p><small>DISCLAIMER: This map is not a substitute for an actual field survey or on-site investigation. The accuracy of this map is limited to the quality of the records from which it was assembled. Other inherent inaccuracies occur during the compilation process. City of Watertown makes no warranty whatsoever concerning this information.</small></p> </div>
--	---	---	--	---