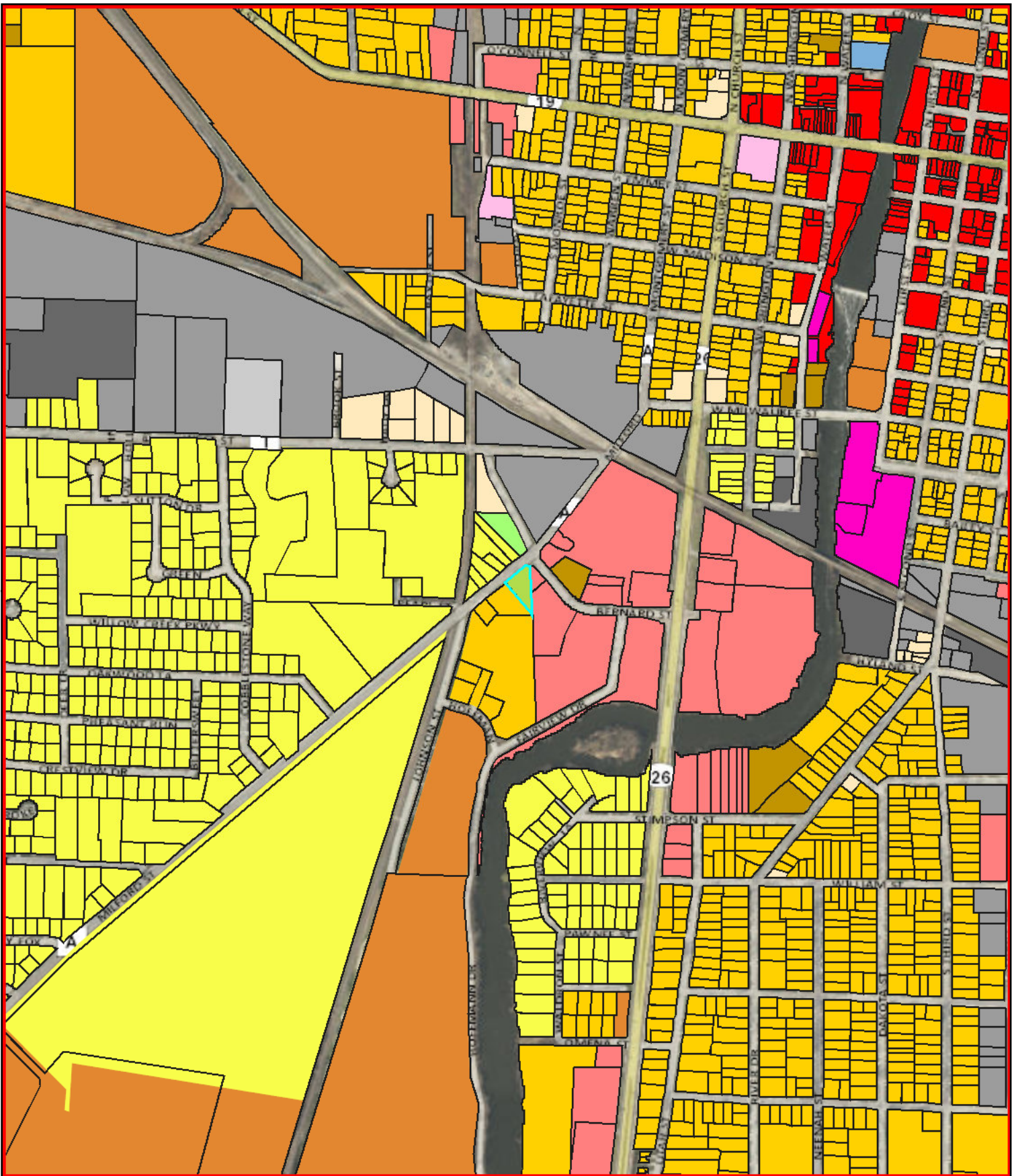


537 Milford Street Zoning



Parcels Override 1 Unknown Two-Family Residential-6		Single-Family Residential-4 Senior Residential Rural Holding Planned Unit Development Planned Office And Institutional Planned Industrial		Planned Business Neighborhood Office Neighborhood Business Multiple Zoning Multi-Family Residential-8 Multi-Family Residential-10		Heavy Industrial General Industrial General Business Conditional Use Central Business District City Limits	
---	--	--	--	--	--	---	--

THE CITY OF WATERTOWN
Opportunity runs through it.

City of Watertown Geographic Information System

Scale: 1 inch = 800 feet
 SCALE BAR = 1"

DISCLAIMER: This map is not a substitute for an actual field survey or onsite investigation. The accuracy of this map is limited to the quality of the records from which it was assembled. Other inherent inaccuracies occur during the compilation process. City of Watertown makes no warranty whatsoever concerning this information.

Printed on: September 22, 2022
 Author: Private User