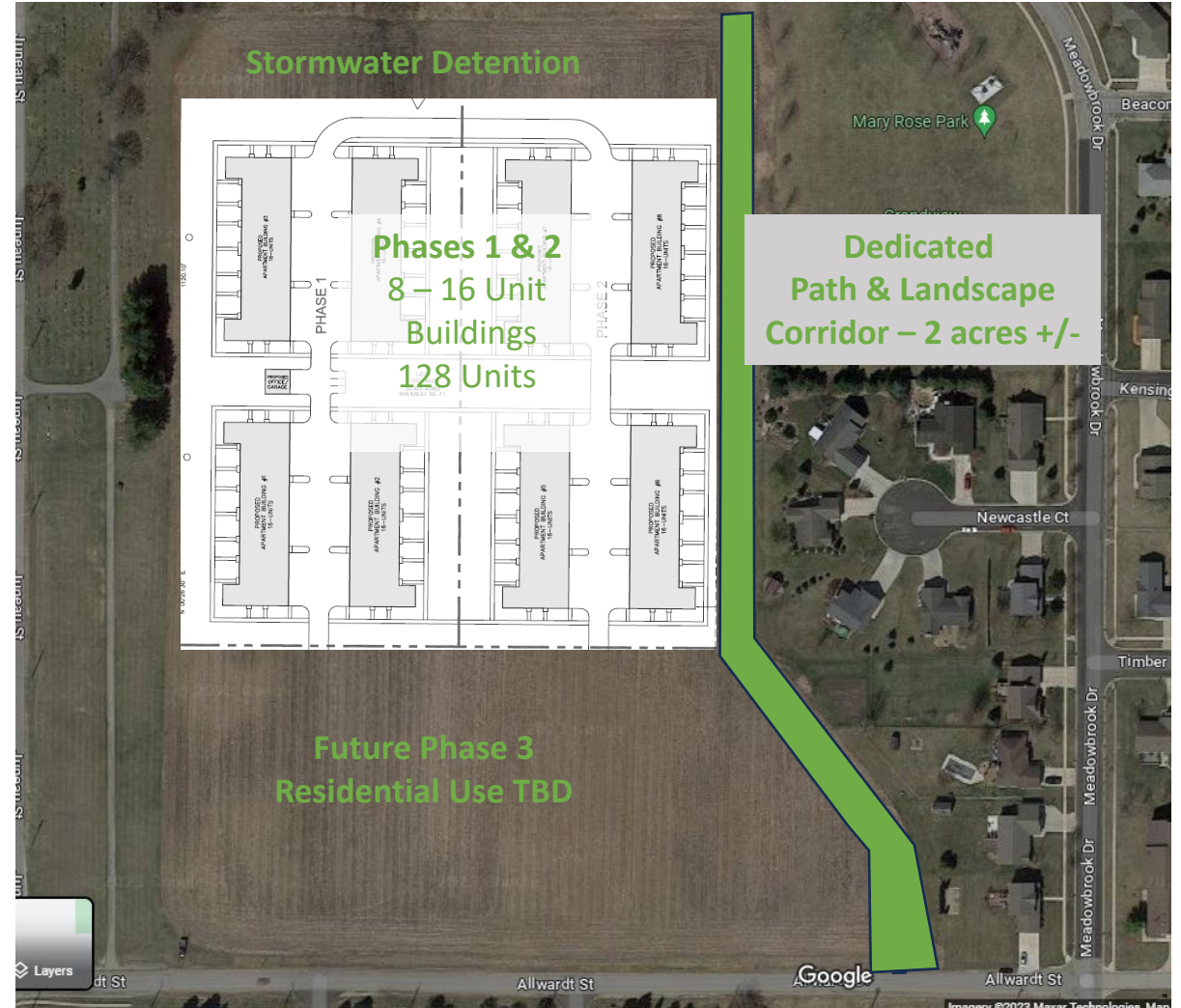
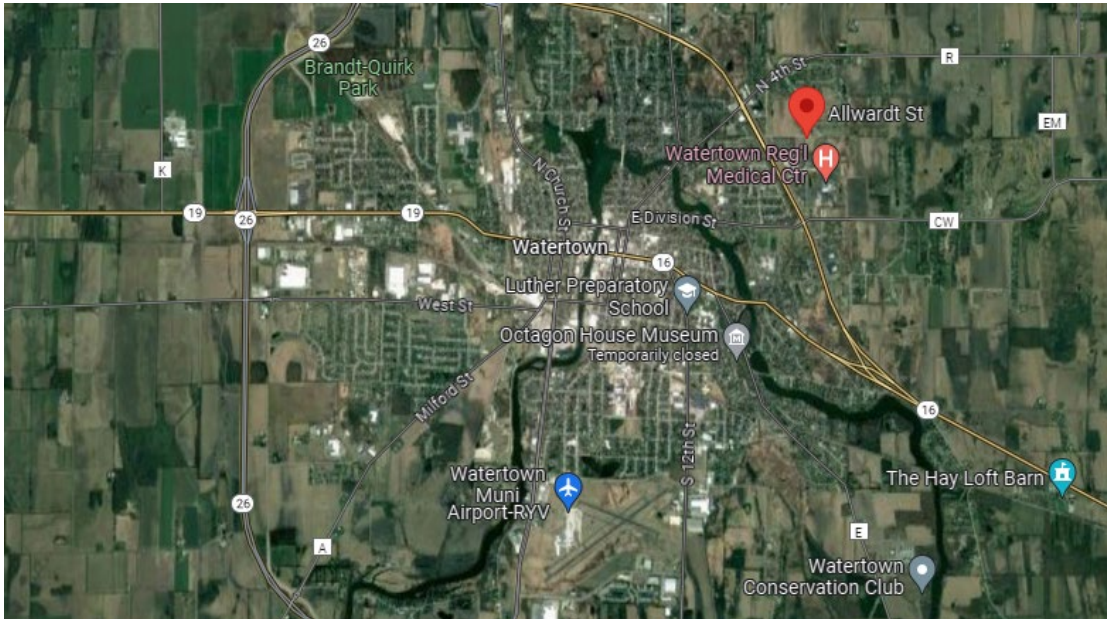


Proposed Allwardt Street Multifamily Development Watertown, WI

- 128 market rate, mainstream units over 2 phases
- Potential 3rd phase with residential use
- Dedicated path & landscape corridor (2 acres +/-) connecting Mary Rose Park to Allwardt St.
- Phase 1 - 64 Units - (4) 16-Unit Buildings
- Phase 2 - 64 Units - (4) 16-Unit Buildings
- Phase 3 - Residential Use TBD (Along Allwardt Street)
- Building Unit mix 12-(2) bedroom & 4-(3) Bedroom units
- Quality mainstream housing with private entrances and attached garages
- Total projected cost of phases 1 & 2 - \$31MM +/-.



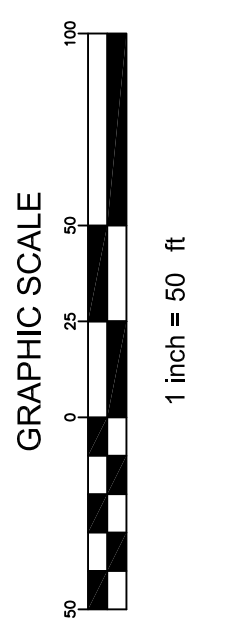
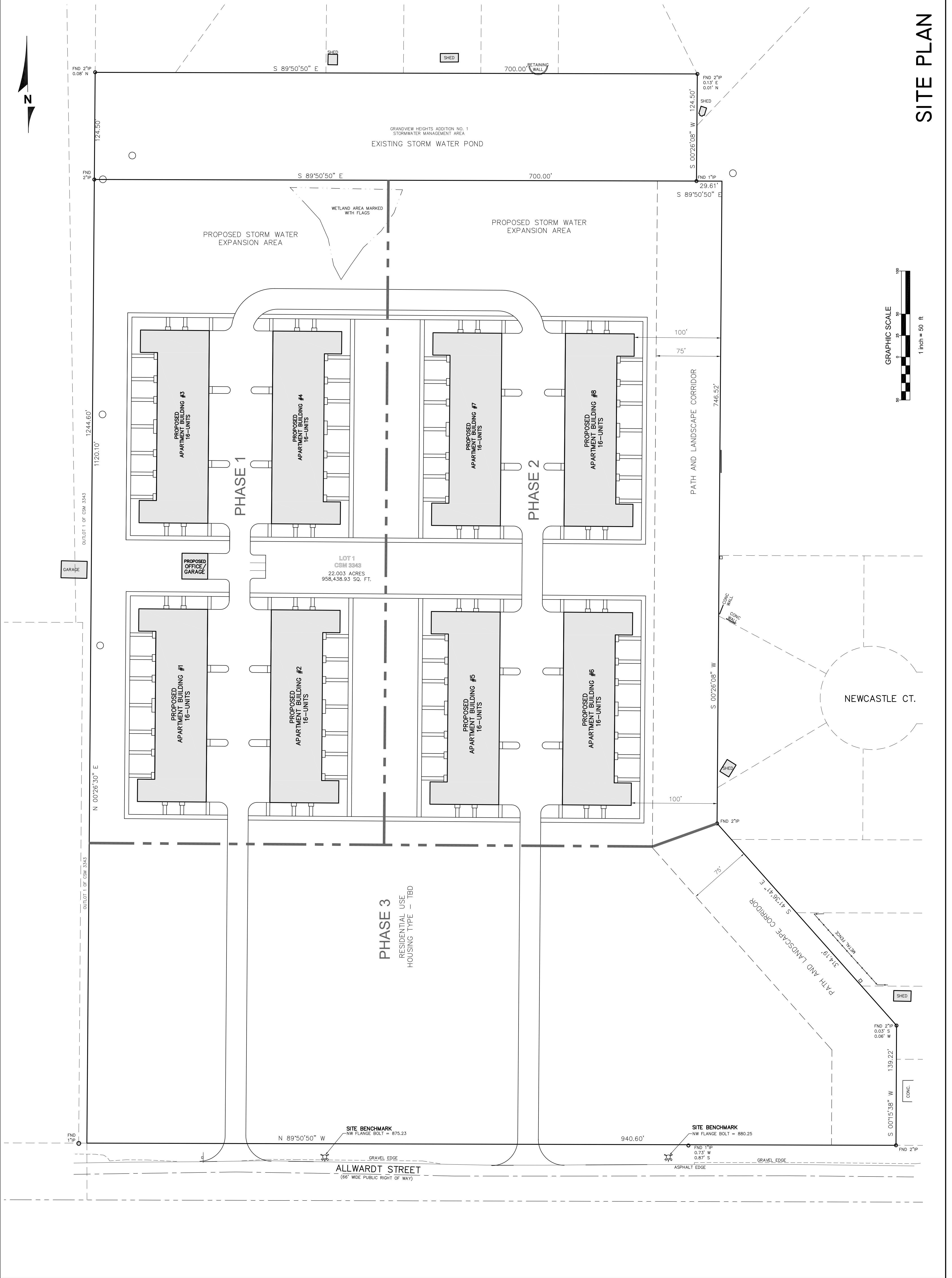
ALLWARDT DEVELOPMENT - REVISED SITE PLAN

CJ
engineering
civil design and consulting
9205 W. Center Street
Suite 214
Milwaukee, WI 53222
PH: (414) 443-1312
www.cj-engineering.com

WATERTOWN MULTI-FAMILY DEVELOPMENT
ALLWART STREET
WATERTOWN, WISCONSIN

CJE NO.: 2403RI
APRIL 18, 2024

SITE PLAN
C1.0



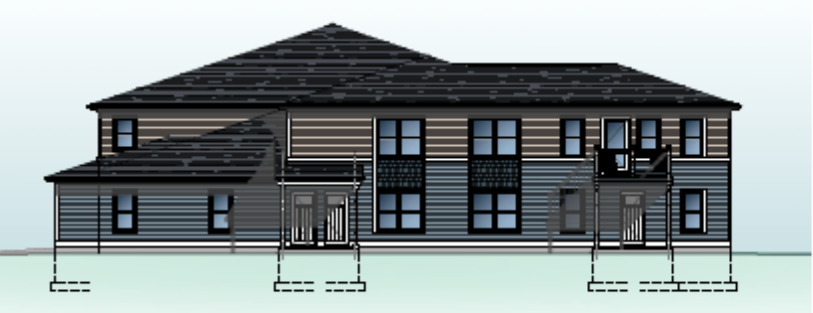
Proposed Allwardt Street Multifamily Development

Renderings of Similar Project



04 COLOR RENDERING NORTH ELEVATION

SCALE = 1/8" = 1'-0"



03 COLOR RENDERING WEST ELEVATION

SCALE = 1/8" = 1'-0"

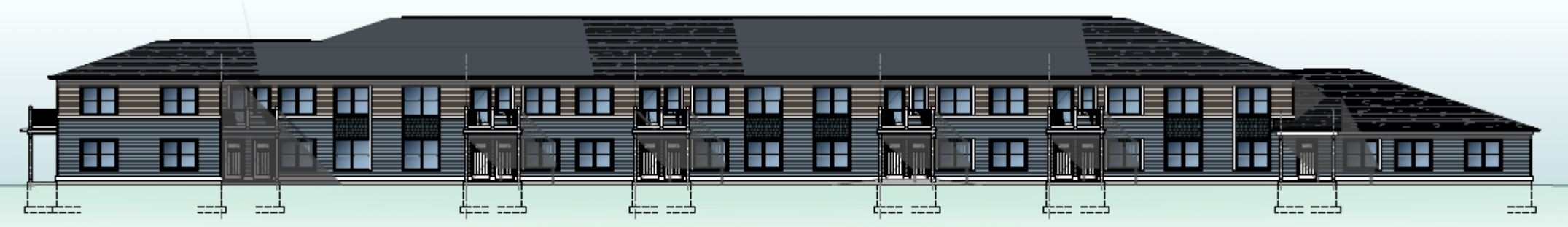
EXTERIOR ELEVATIONS MATERIAL NOTES

<ul style="list-style-type: none"> SSD-1 DOUBLE 8" VENT. LAP SIDING ROYAL BUILDING PRODUCTS ELM DRIVE, PROFILE: DA COLOR: MOCHA 	<ul style="list-style-type: none"> SSD-3 1" VENT. SHAKE SIDING ROYAL BUILDING PRODUCTS PORTSMOUTH, PROFILE: 47 COLOR: SLATE
<ul style="list-style-type: none"> SSD-2 DOUBLE 8" VENT. LAP SIDING ROYAL BUILDING PRODUCTS ELM DRIVE, PROFILE: DEEL COLOR: POLARK 	<ul style="list-style-type: none"> SPD-1 DIMENSIONAL ASPHALT SHINGLES TIMBERLINE HD COLOR: CHARACAL



02 COLOR RENDERING EAST ELEVATION

SCALE = 1/8" = 1'-0"



COLOR RENDERING

