

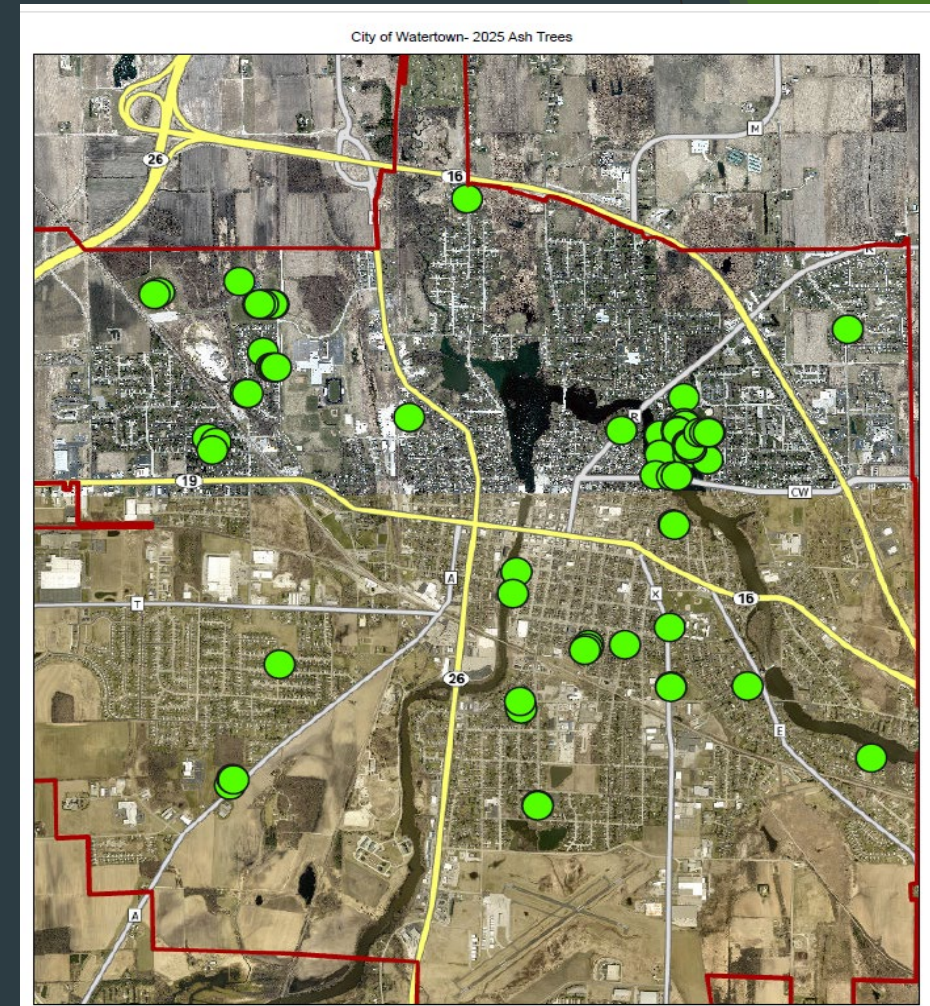
City of Watertown & Emerald Ash Borer

- ▶ How did we get here?
- ▶ EAB and Ash Trees Today
- ▶ The Future of ash trees in Watertown
- ▶ Value of an Urban Forest

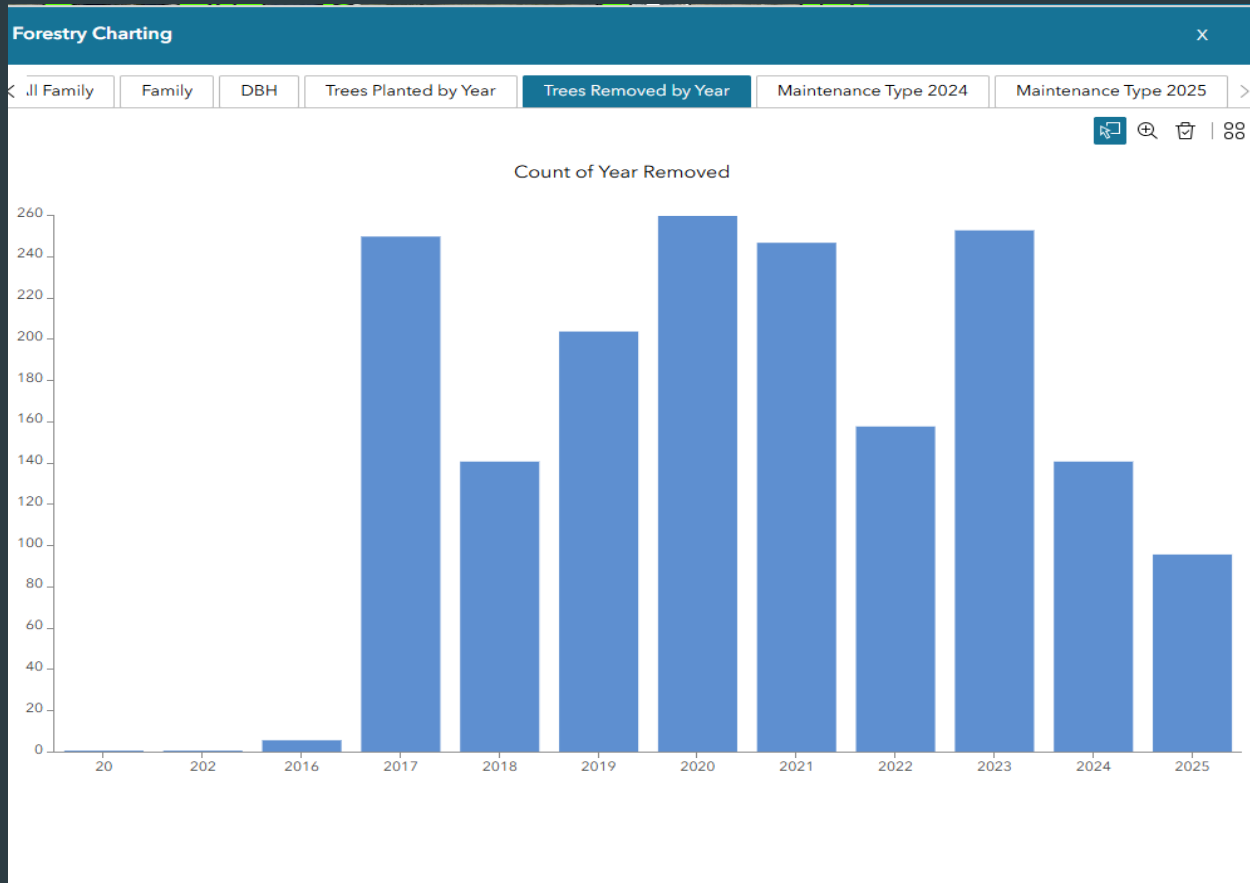


Management Strategies for EAB & Ash Trees 2013

- ▶ Roughly 1,000 City Ash Trees
- ▶ Removal- proactive approach
- ▶ Injections
 - ▶ Preserve prized ash trees
 - ▶ Delay mortality
- ▶ WI DNR Forestry Grants
 - ▶ Right Tree Right Spot
 - ▶ Tree Plantings
 - ▶ Injections



Ash Removals



- ▶ Ash Trees Removed by Year
- ▶ 2017 - 111
- ▶ 2018 - 49
- ▶ 2019 - 101
- ▶ 2020 - 150
- ▶ 2021 - 80
- ▶ 2022 - 57
- ▶ 2023 - 48
- ▶ 2024 - 23
- ▶ 2025 - 5 Pending
- ▶ Total 624

Ash Injections

- ▶ Remaining Ash Trees

- ▶ Green Ash 19
- ▶ White Ash 55
- ▶ Total 74 (5 pending removal)

- ▶ Treated Ash Trees 60

- ▶ Park 47
- ▶ Street 13

- ▶ Cost of Injections

- ▶ 2026 43 trees \$8,866.35
- ▶ 2025 17 trees \$3,544.10
- ▶ 2024 40 trees \$7,553.00
- ▶ 2023 13 trees \$2,720.00

- ▶ Alternatives moving forward

WDNR Forestry Grants

- ▶ Right Tree Right Spot

- ▶ Started in 2019
- ▶ 700 trees

- ▶ Tree Plantings

- ▶ Replace ash trees
- ▶ Replace canopy loss

- ▶ Trees Planted

- ▶ 2019 139 (114 Grant)
- ▶ 2020 147 (120 Grant)
- ▶ 2021 155 (122 Grant)
- ▶ 2022 124 (81 Grant)
- ▶ 2023 197 Grant not awarded
- ▶ 2024 113 (53 Grant)
- ▶ 2025 87 (50 Grant)
- ▶ 2026 115 (75 Grant)

Tree Value & Benefits

- ▶ Total annual Benefit \$84,000 (i-tree)
 - ▶ Air pollution reduction
 - ▶ Carbon sequestered
 - ▶ Avoided runoff
 - ▶ Heating/Cooling
- ▶ Replacement Value ?????
- ▶ Council of Tree & Landscape Appraisers
- ▶ Replacement Value of all ash trees \$325,171
- ▶ 50" White Ash at Riverside Park Tennis Court Replacement value \$17,223 Cost to inject \$458