

MB-DT-46 EXTERIOR MENU BOARD

Blue Outdoor Drive-Thru Menu Board

MB-DT-46

Standard Menu Board for Drive-Thru Lane

LED Internal Illumination

POP Graphic panels must be purchased separately

POPP-Out magnet access panels included for easy in & out of POP panels

"-CS" option for 160mph coastal wind standards available

Locking rear access doors (4)

Culver's

FRONT



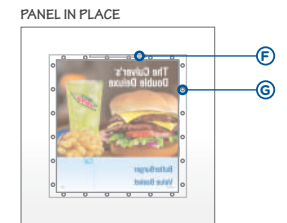
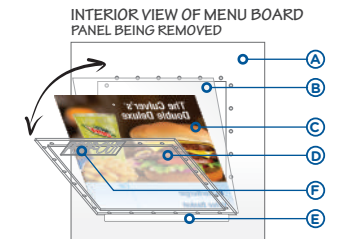
REAR



SCALE: 3/8" = 1'

*SCALE AND COLORS NOT REPRESENTATIVE FROM EMAIL ATTACHMENTS
*ALL MEASUREMENTS ARE APPROXIMATE

POPP-Out Point Of Purchase Panel System



- A - INSIDE BACK OF MENU BOARD FACE (ONLY ONE PANEL SHOWN FOR CLARITY)
- B - FRONT PANEL IS ANTI-GLARE (CLEAR) FOR INCREASED VISIBILITY
- C - POP PANEL - PRODUCT GRAPHIC
- D - REAR PANEL FITTED WITH POPP-Out PANEL
- E - SUPPORTING "TIP TRAY" FOR PANELS (SELF ALIGNING)
- F - POPP-Out TAB HANDLE
- G - PAIRED MAGNETIC "LATCH" (MAGNETS EMBEDDED IN POP-Out PANEL & BACK OF MENU BOARD)

SALES PERSON:	DESIGNED BY:	A0:
MARK WESSELL	R HICKS	42002

DATE CREATED / REVISION HISTORY	
01/16/23 - NEW	

FILE PATH: T:\Cyrius\Doc\Order\42000\o42002

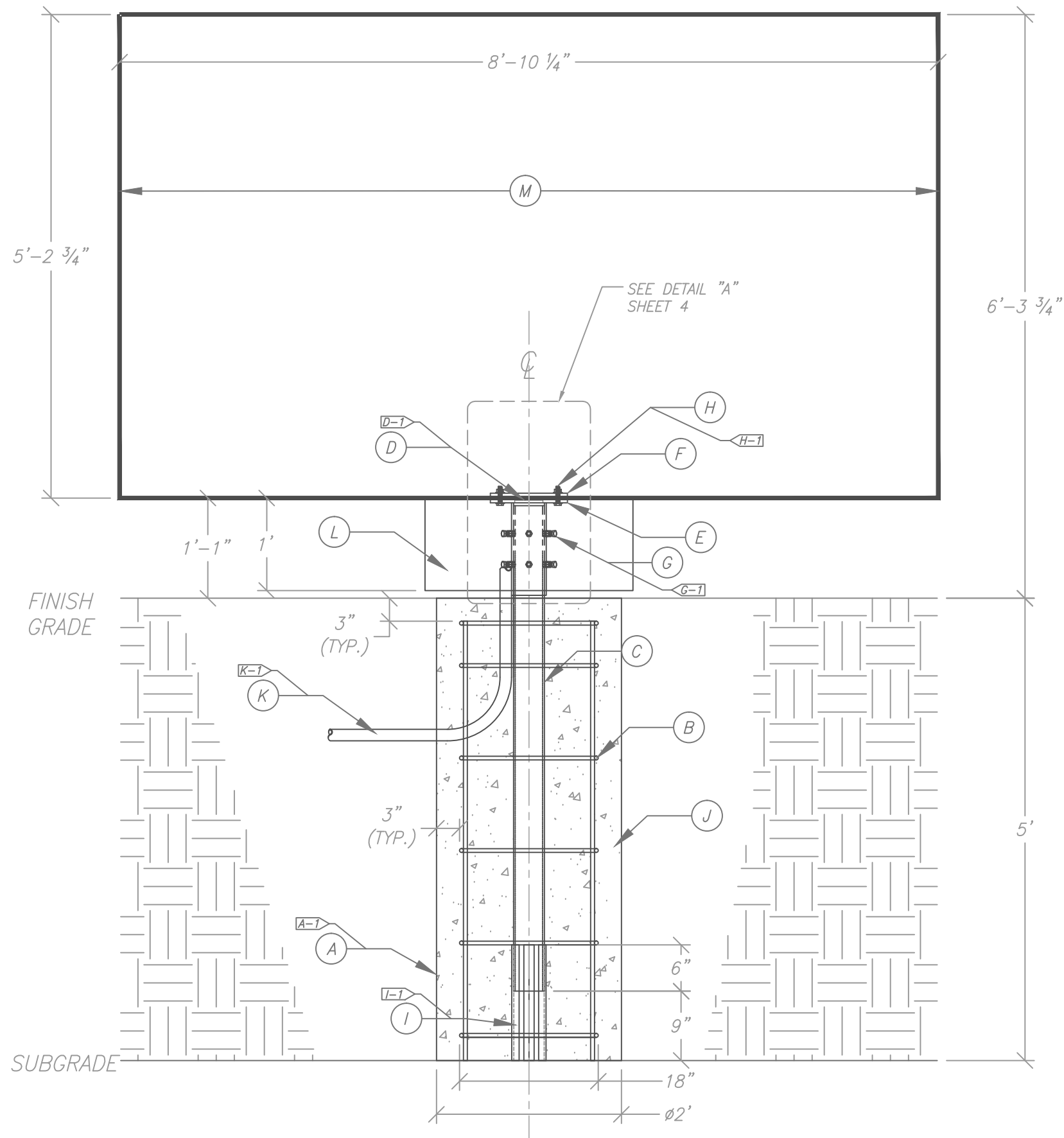
© 2020 Springfield Sign & Graphics Inc., Springfield Sign

This drawing is Copyrighted material, it remains the property of Springfield Sign unless otherwise agreed upon in writing. It is unlawful to use this drawing for bidding purposes, nor can it be reproduced, copied or used in the production of a sign without written permission from Springfield Sign & Graphics.

This is an artistic rendition and final colors / sizes may vary from that depicted herein.



SPRINGFIELD SIGN
www.springfieldsign.com



DRIVE-THROUGH MENU BOARD		
Ⓐ	AUGER	
	SIZE:	24" UNLESS OTHERWISE DETERMINED BY ENGINEERING/CODE REQUIREMENTS
	A-1	NO OVERDIG WILL BE ALLOWED. THE SOIL REMAINING OUTSIDE OF THE DIMENSIONAL LIMITS OF THE AUGERED HOLE IS TO REMAIN UNDISTURBED.
Ⓑ	REBAR REINFORCING	
	SIZE:	#4'S UNLESS OTHERWISE DETERMINED BY ENGINEERING/CODE REQUIREMENTS
	SPACING:	TO BE DETERMINED ON SITE BY ENGINEER
Ⓒ	STEEL PIPE	
	MATERIAL:	3 1/2" SCHEDULE 40
	FINISH:	SAND SMOOTH APPLY RED OXIDE PRIMER
Ⓓ	STEEL PIPE	
	MATERIAL:	4" SCHEDULE 40
	FINISH:	SAND SMOOTH APPLY RED OXIDE PRIMER
	D-1	WELDED TO MOUNTING PLATE ALL THE WAY AROUND-2 PLACES
Ⓔ	OUTSIDE BASE MOUNTING PLATE	SEE SHEET 5
	MATERIAL:	5/8" PLATE STEEL
Ⓕ	INSIDE BASE MOUNTING PLATE	SEE SHEET 5
	MATERIAL:	5/8" PLATE STEEL
Ⓖ	PIPE BOLTS	
	MATERIAL:	1/2" x 1 3/4" BOLTS / NUTS
	G-1	6 PLACES
Ⓗ	MOUNTING PLATE BOLTS	
	MATERIAL:	1/2" x 2 1/2" BOLTS / NUTS / WASHERS
	H-1	4 PLACES
Ⓛ	BASE PIPE SUPPORT	
	MATERIAL:	1" STEEL ANGLE-3 PLACES
	I-1	WELDED TO BASE PIPE
Ⓢ	BACKFILL	
	MATERIAL:	2500 PSI CONCRETE OR AS PER ENGINEERING
Ⓚ	ELECTRICAL PRIMARY	
	K-1	CONDUIT, SWEEP THROUGH FOOTING
Ⓜ	SIGN SKIRT	
	MATERIAL:	0.063" ROUTED ALUMINUM
Ⓜ	MAIN MENU BOARD	
	PART #:	MB-DT-46

SCALE 3/4" = 1'

LOCATION:
CULVER'S

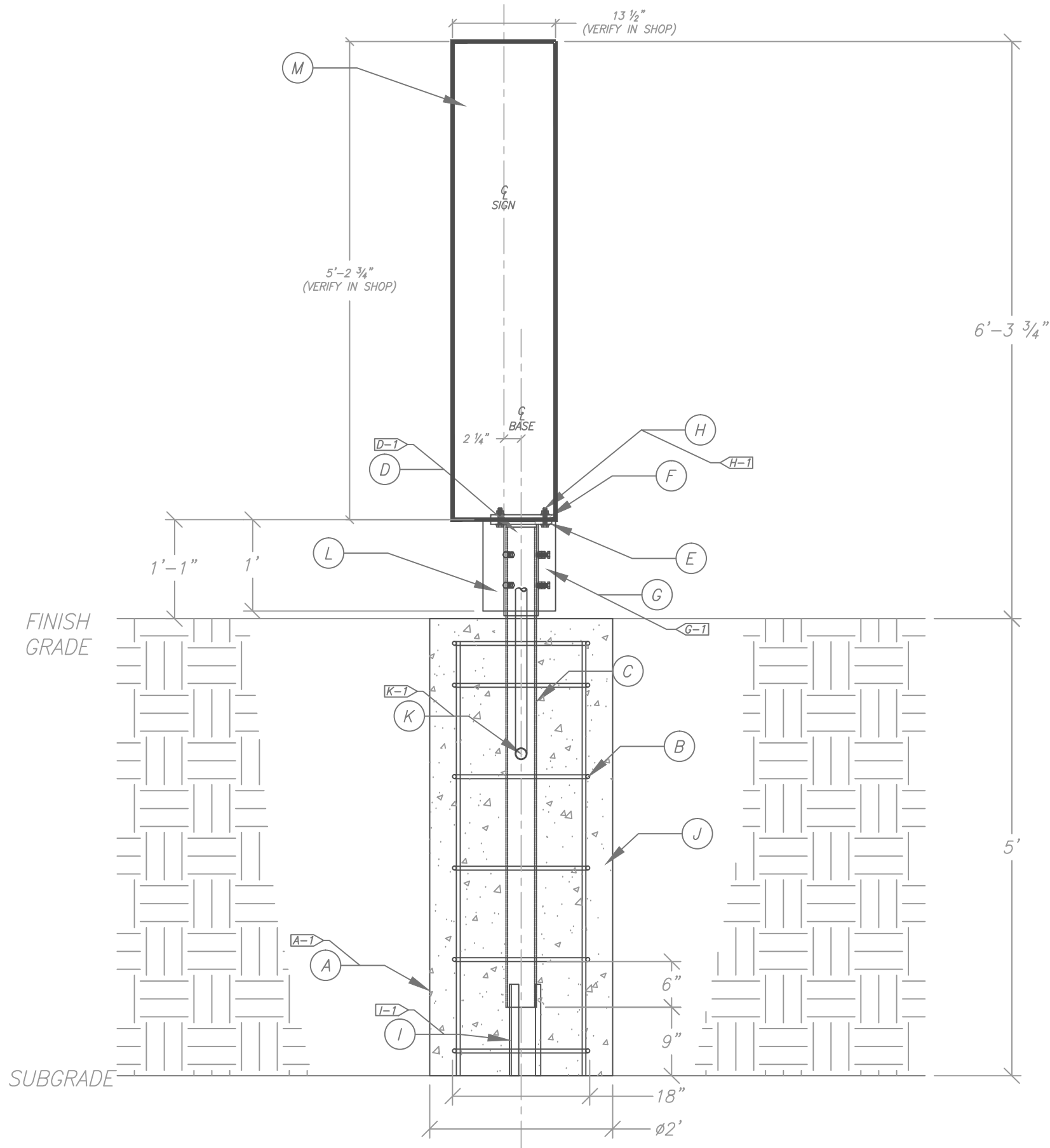
SPRINGFIELD SIGN
4825 E. Kearney St.
Springfield, MO 65803
(417) 862-2454

Client:
Culver Franchising
System, Inc.
540 Water Street
Prairie du Sac, WI 53578
p (608) 643-7980

CULVER FRANCHISING SYSTEM, INC.
MB-DT-BASE
MAIN MENU BOARD
FRONT VIEW

Project Number: 9902
Drawn By: DEN
Reviewed By: MW
Date: 7-25-17
Sheet Number:

1 OF 5



DRIVE-THROUGH MENU BOARD		
Ⓐ	AUGER	
	SIZE:	24" UNLESS OTHERWISE DETERMINED BY ENGINEERING/CODE REQUIREMENTS
	A-1	NO OVERDIG WILL BE ALLOWED. THE SOIL REMAINING OUTSIDE OF THE DIMENSIONAL LIMITS OF THE AUGERED HOLE IS TO REMAIN UNDISTURBED.
Ⓑ	REBAR REINFORCING	
	SIZE:	#4'S UNLESS OTHERWISE DETERMINED BY ENGINEERING/CODE REQUIREMENTS
	SPACING:	TO BE DETERMINED ON SITE BY ENGINEER
Ⓒ	STEEL PIPE	
	MATERIAL:	3 1/2" SCHEDULE 40
	FINISH:	SAND SMOOTH APPLY RED OXIDE PRIMER
Ⓓ	STEEL PIPE	
	MATERIAL:	4" SCHEDULE 40
	FINISH:	SAND SMOOTH APPLY RED OXIDE PRIMER
	D-1	WELDED TO MOUNTING PLATE ALL THE WAY AROUND-2 PLACES
Ⓔ	OUTSIDE BASE MOUNTING PLATE	SEE SHEET 5
	MATERIAL:	5/8" PLATE STEEL
Ⓘ	INSIDE BASE MOUNTING PLATE	SEE SHEET 5
	MATERIAL:	5/8" PLATE STEEL
Ⓖ	PIPE BOLTS	
	MATERIAL:	1/2" x 1 3/4" BOLTS / NUTS
	G-1	6 PLACES
ⓓ	MOUNTING PLATE BOLTS	
	MATERIAL:	1/2" x 2 1/2" BOLTS / NUTS / WASHERS
	H-1	4 PLACES
Ⓛ	BASE PIPE SUPPORT	
	MATERIAL:	1" STEEL ANGLE-3 PLACES
	I-1	WELDED TO BASE PIPE
Ⓢ	BACKFILL	
	MATERIAL:	2500 PSI CONCRETE OR AS PER ENGINEERING
Ⓚ	ELECTRICAL PRIMARY	
	K-1	CONDUIT, SWEEP THROUGH FOOTING
Ⓚ	SIGN SKIRT	
	MATERIAL:	0.063" ROUTED ALUMINUM
Ⓜ	MAIN MENU BOARD	
	PART #:	MB-DT-46

SCALE 3/4" = 1'

LOCATION:
CULVER'S

SPRINGFIELD SIGN
4825 E. Kearney St.
Springfield, MO 65803
(417) 862-2454

Client:
Culver Franchising
System, Inc.
540 Water Street
Prairie du Sac, WI 53578
p (608) 643-7980

CULVER FRANCHISING SYSTEM, INC.
MB-DT-BASE
MAIN MENU BOARD
SIDE VIEW

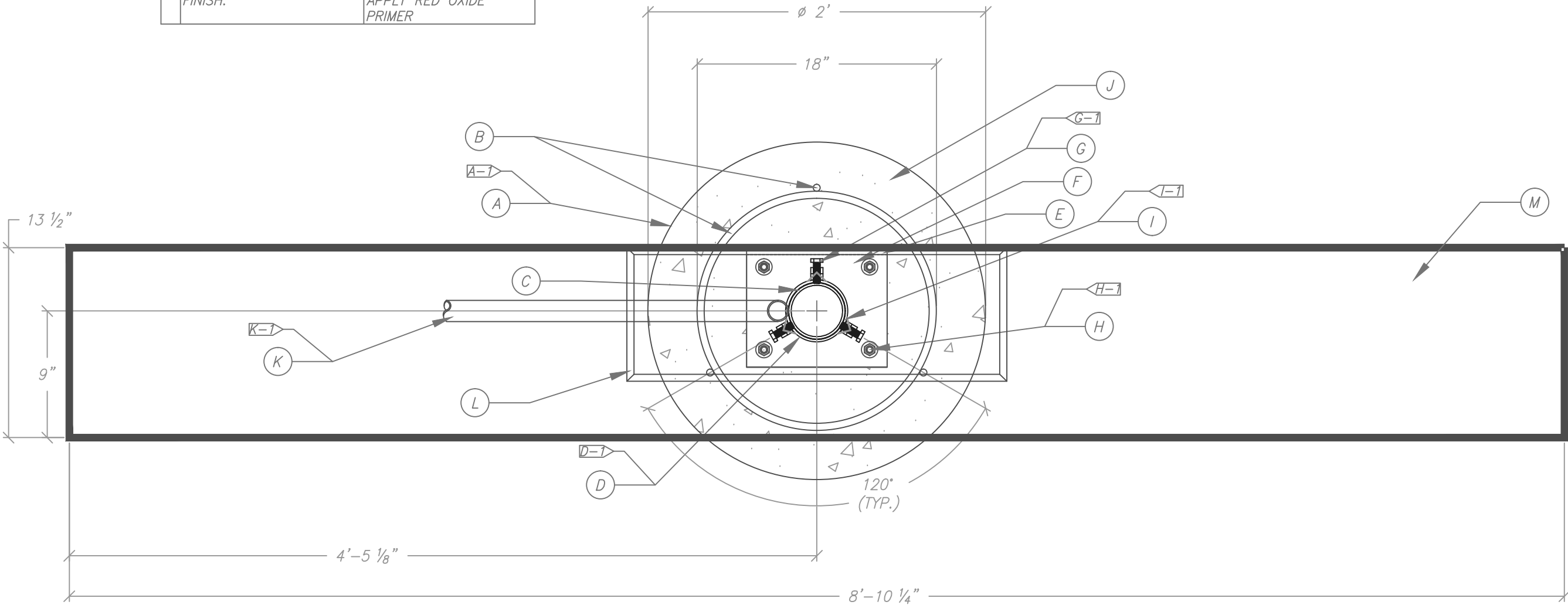
Project Number: 9902
Drawn By: DEN
Reviewed By: MW
Date: 7-25-17
Sheet Number:

2 OF 5

DRIVE-THROUGH/MAIN MENU BOARD		
Ⓐ	AUGER	
	SIZE:	24" UNLESS OTHERWISE DETERMINED BY ENGINEERING/CODE REQUIREMENTS
	A-1	NO OVERDIG WILL BE ALLOWED. THE SOIL REMAINING OUTSIDE OF THE DIMENSIONAL LIMITS OF THE AUGERED HOLE IS TO REMAIN UNDISTURBED.
Ⓑ	REBAR REINFORCING	
	SIZE:	#4'S UNLESS OTHERWISE DETERMINED BY ENGINEERING/CODE REQUIREMENTS
	SPACING:	TO BE DETERMINED ON SITE BY ENGINEER
Ⓒ	STEEL PIPE	
	MATERIAL:	3 1/2" SCHEDULE 40
	FINISH:	SAND SMOOTH APPLY RED OXIDE PRIMER

Ⓓ	STEEL PIPE	
	MATERIAL:	4" SCHEDULE 40
	FINISH:	SAND SMOOTH APPLY RED OXIDE PRIMER
	D-1	WELDED TO MOUNTING PLATE ALL THE WAY AROUND-2 PLACES
Ⓔ	OUTSIDE BASE MOUNTING PLATE	SEE SHEET 5
	MATERIAL:	5/8" PLATE STEEL
Ⓕ	INSIDE BASE MOUNTING PLATE	SEE SHEET 5
	MATERIAL:	5/8" PLATE STEEL
Ⓖ	PIPE BOLTS	
	MATERIAL:	1/2" x 1 3/4" BOLTS / NUTS
	G-1	6 PLACES

Ⓗ	MOUNTING PLATE BOLTS	
	MATERIAL:	1/2" x 2 1/2" BOLTS / NUTS / WASHERS
	H-1	4 PLACES
Ⓘ	BASE PIPE SUPPORT	
	MATERIAL:	1" STEEL ANGLE-3 PLACES
	I-1	WELDED TO BASE PIPE
⓵	BACKFILL	
	MATERIAL:	2500 PSI CONCRETE OR AS PER ENGINEERING
Ⓚ	ELECTRICAL PRIMARY	
	K-1	CONDUIT, SWEEP THROUGH FOOTING
Ⓛ	SIGN SKIRT	
	MATERIAL:	0.063" ROUTED ALUMINUM
Ⓜ	MAIN MENU BOARD	
	PART #:	MB-DT-46



SCALE 1/8" = 1"

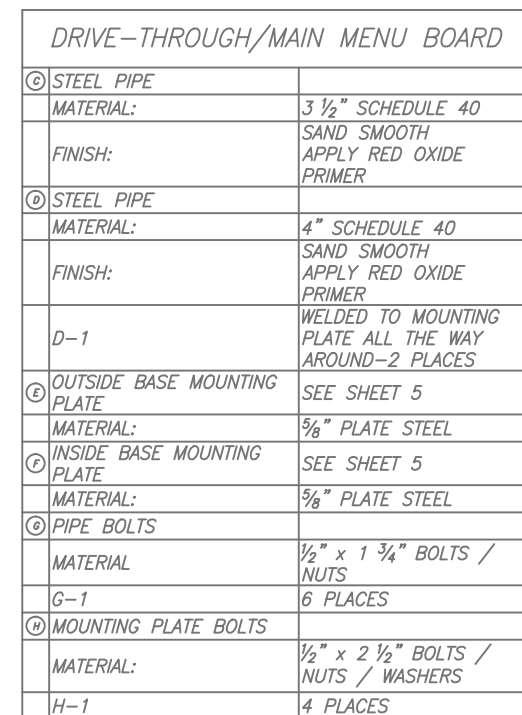
LOCATION:
CULVER'S

SPRINGFIELD SIGN
4825 E. Kearney St.
Springfield, MO 65803
(417) 862-2454

Client:
Culver Franchising
System, Inc.
540 Water Street
Prairie du Sac, WI 53578
p (608) 643-7980

CULVER FRANCHISING SYSTEM, INC.
MB-DT-BASE
MAIN MENU BOARD
TOP VIEW

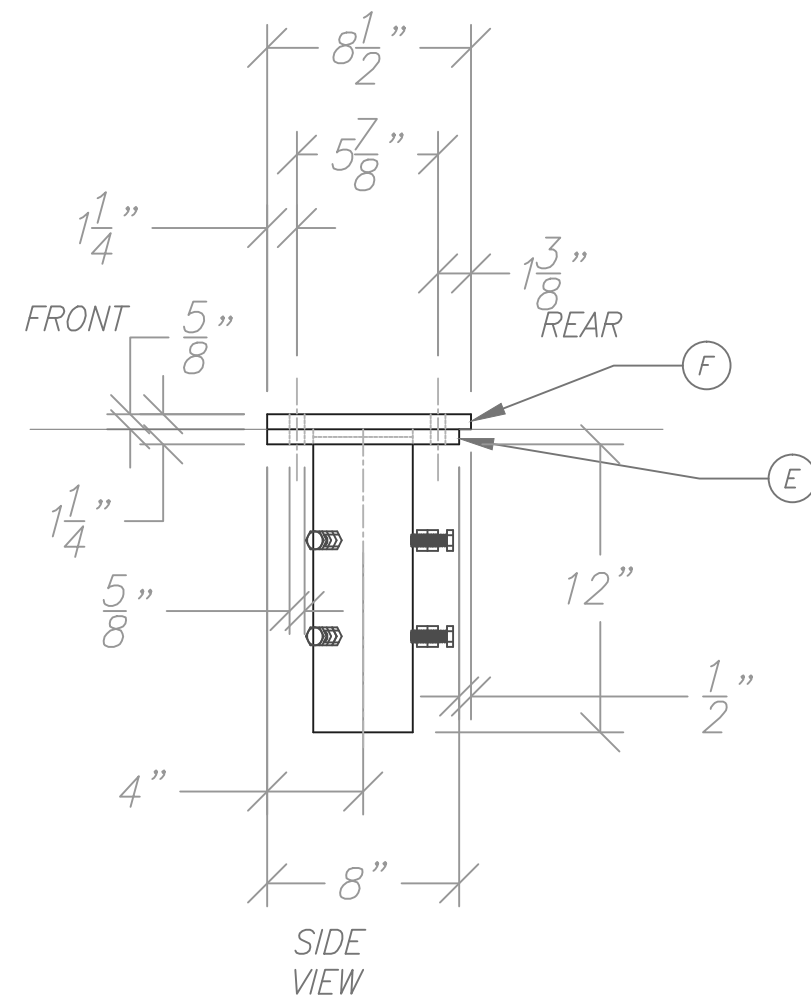
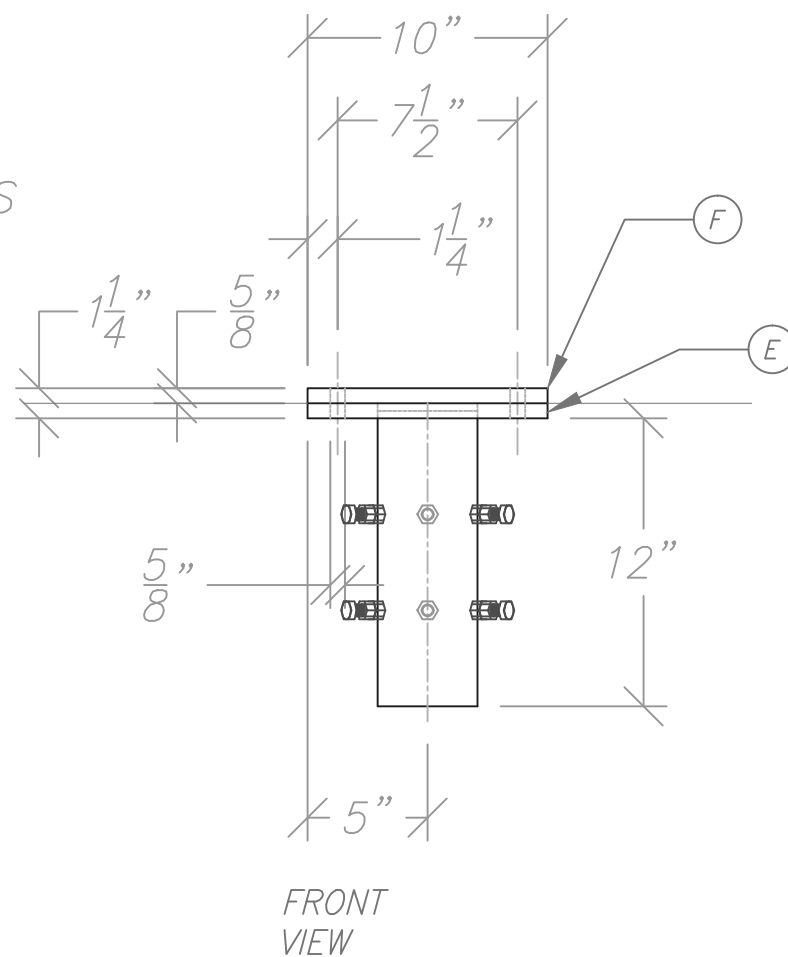
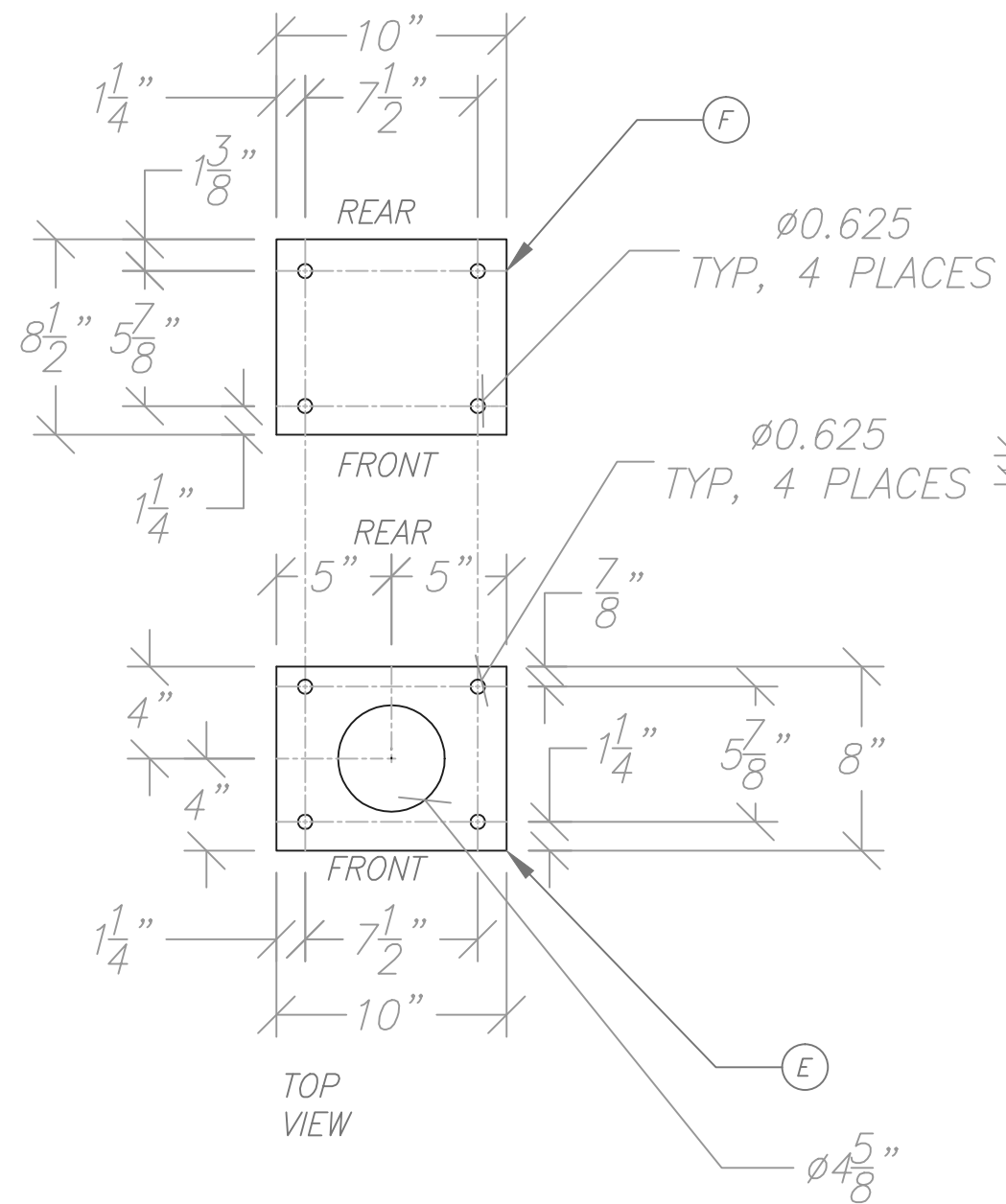
Project Number: 9902
Drawn By: DEN
Reviewed By: MW
Date: 7-25-17
Sheet Number:
3 OF 5



LOCATION:
CULVER'S

Client:
Culver Franchising
System, Inc.
540 Water Street
Prairie du Sac, WI 53578
p (608) 643-7980

SPRINGFIELD SIGN
4825 E. Kearney St.
Springfield, MO 65803
(417) 862-2454



SCALE $\frac{1}{8}" = 1"$

LOCATION:
CULVER'S

CULVER FRANCHISING SYSTEM, INC.
DRIVE-THROUGH/MAIN MENU BOARD
BASE MOUNTING PLATES
SIGN BASE-DETAIL

Client: Culver Franchising
System, Inc.
540 Water Street
Prairie du Sac, WI 53578
p (608) 643-7980

SPRINGFIELD SIGN
4825 E. Kearney St.
Springfield, MO 65803
(417) 862-2454

Sheet Number:
5 OF 5