

# DRIVE-THRU

## Vehicle Height Detector

### VHD-1

Vehicle Height Detector

#### SIGN DETAILS:

All steel (painted) construction

Re-settable if engaged

Used to help protect canopies from advancing vehicles that are too tall

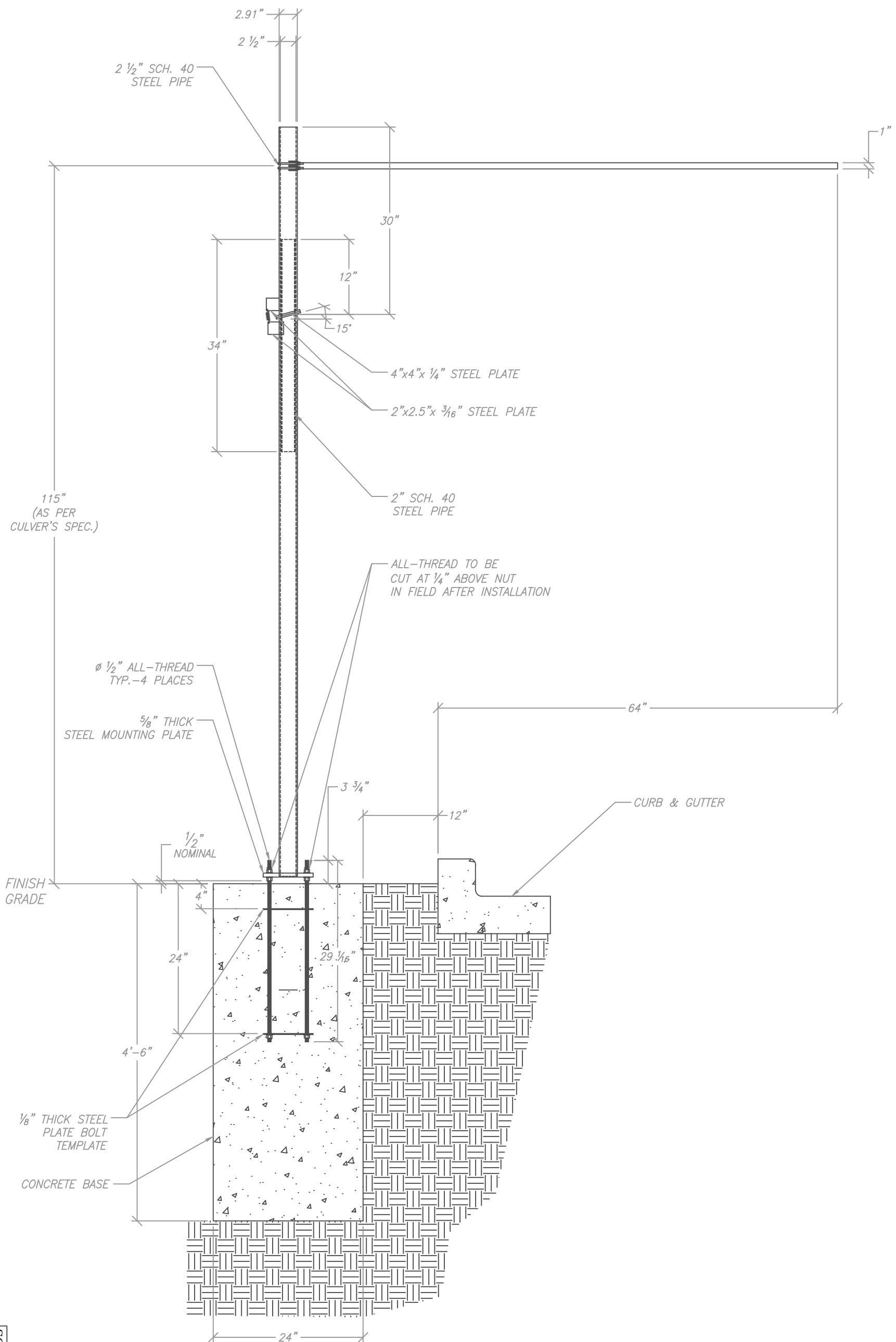
*Culver's*

SIGN & MENU BOARD BRAND STANDARDS  
WITH TECHNICAL SPECIFICATIONS



SCALE: 1/2" = 1'

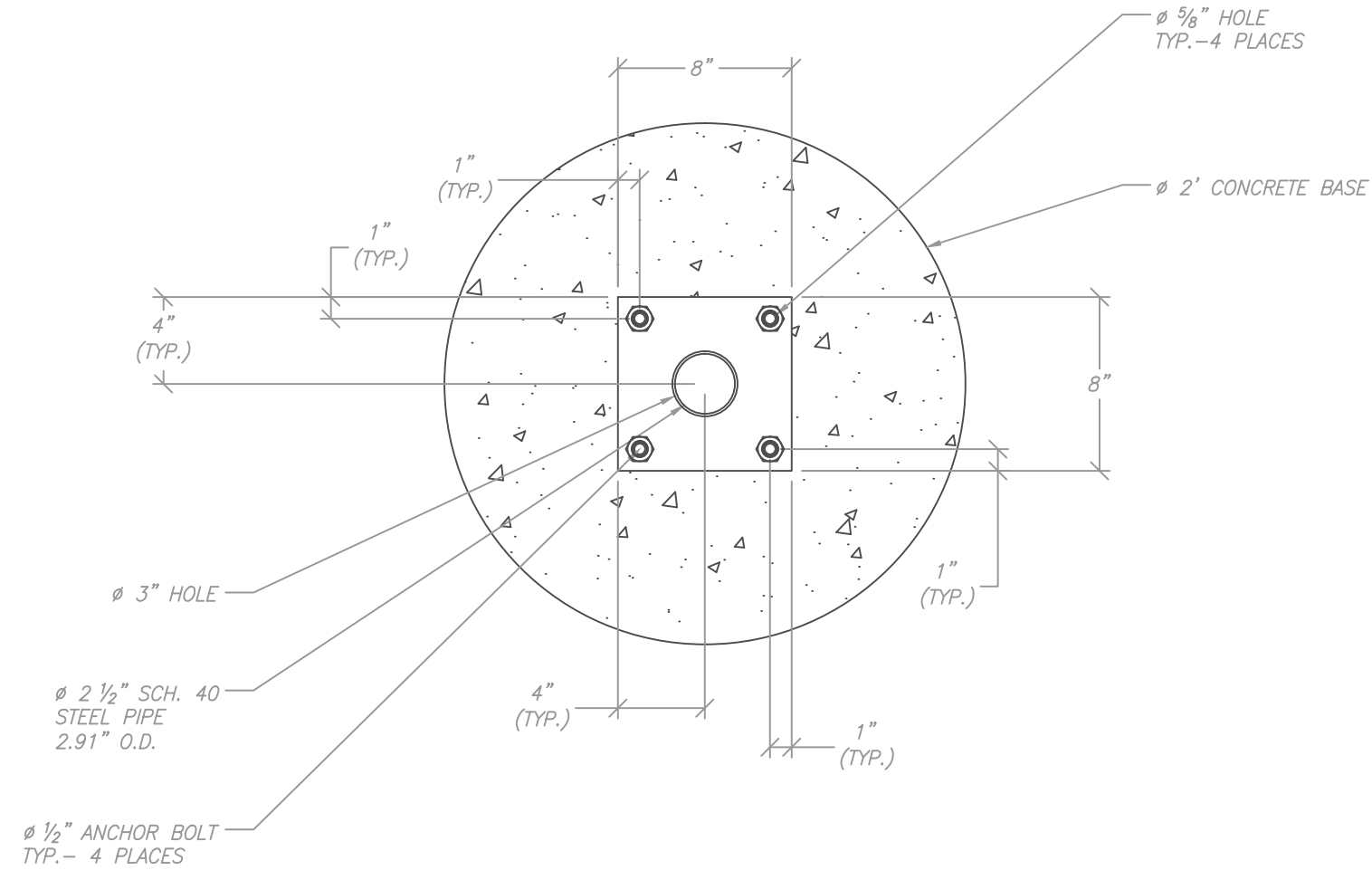
VHD-1



Project Number: 9902  
 Drawn By: DEN  
 Reviewed By: MW  
 Date: 8-04-17

CULVER FRANCHISING SYSTEM, INC.  
VEHICLE HEIGHT DETECTOR  
FRONT VIEW

Client:



STEEL PLATE—5/8" THICK  
CENTERED ON Ø 2' CONCRETE BASE

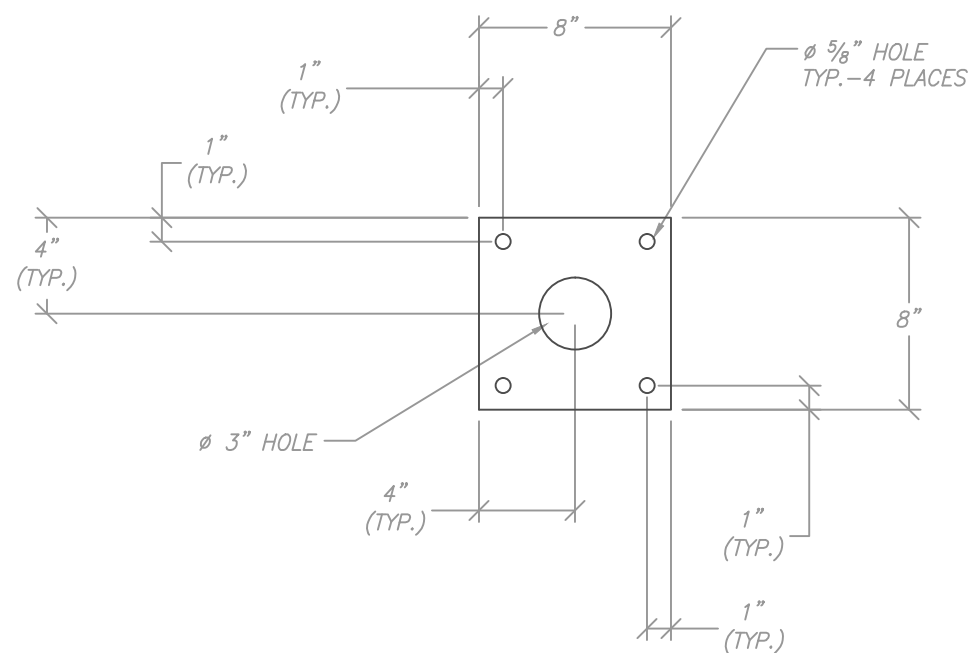
SCALE 1 1/2" = 1'

CULVER FRANCHISING SYSTEM, INC.  
VEHICLE HEIGHT DETECTOR  
CONCRETE BASE/MOUNTING PLATE  
TOP VIEW

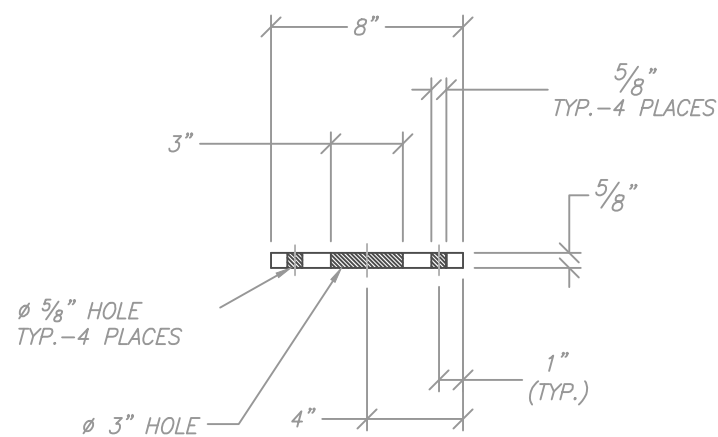
Project Number: XXXXX  
Drawn By: DEN  
Reviewed By: MW  
Date: 3-02-17  
Sheet Number: 2 OF 3

Client:  
Culver Franchising  
System, Inc.  
540 Water Street  
Prairie du Sac, WI 53578  
p (608) 643-7980

SPRINGFIELD SIGN  
4825 E. Kearney St.  
Springfield, MO 65803  
(417) 862-2454

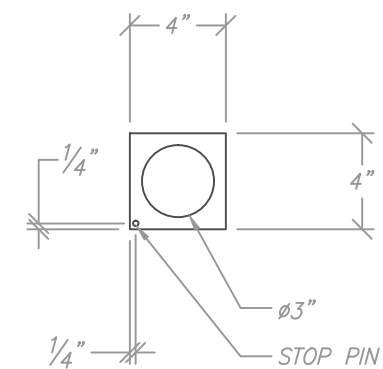


TOP VIEW

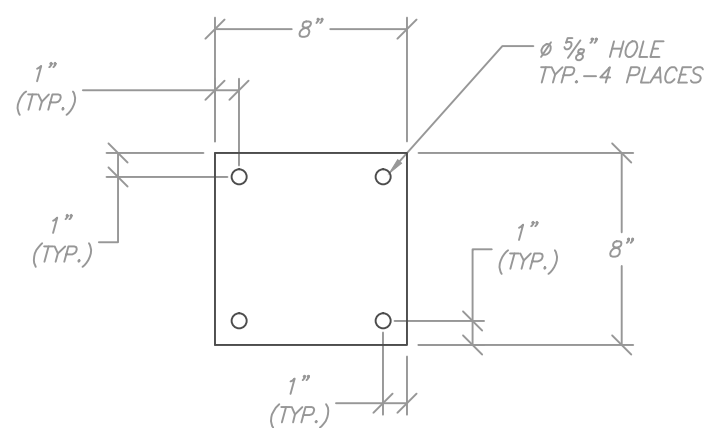


SIDE VIEW

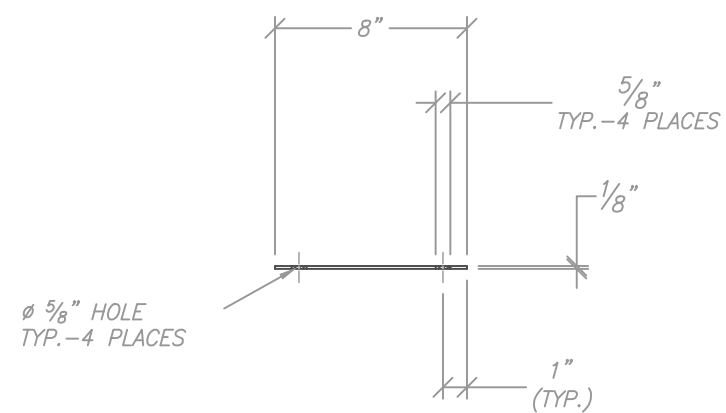
STEEL PLATE-5/8" THICK



STEEL PLATE-1/4" THICK

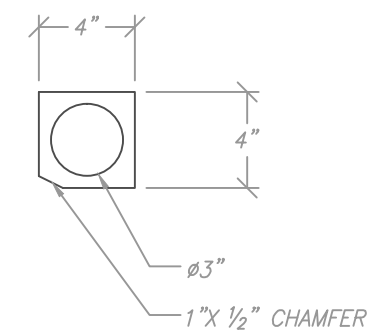


TOP VIEW



*SIDE VIEW*

STEEL PLATE-1/8" THICK



STEEL PLATE-1/4" THICK

SCALE 1 1/2" = 1'

Project Number:	XXXXX
Drawn By:	DEN
Reviewed By:	MW
Date:	3-02-17
Sheet Number:	

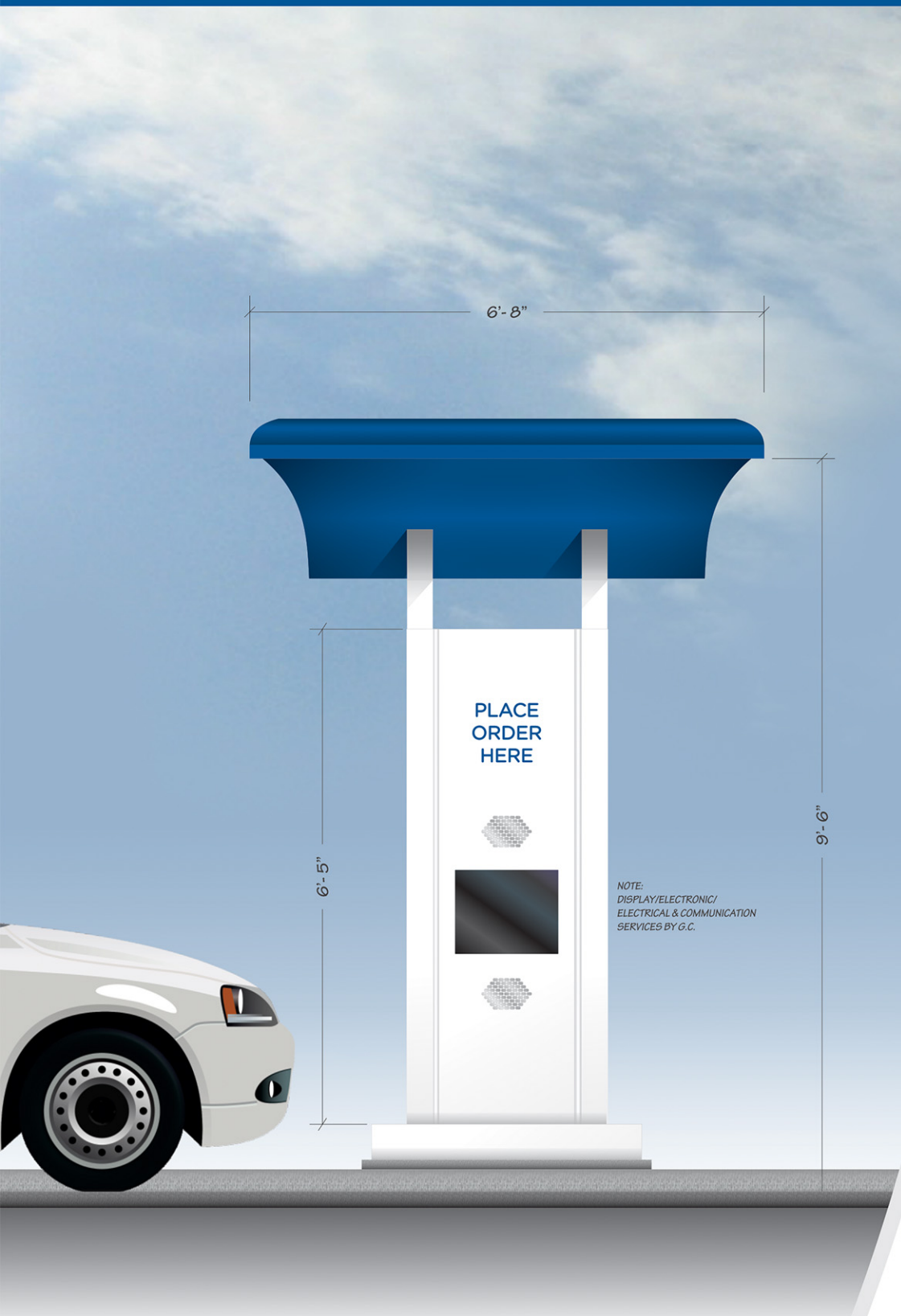
CULVER FRANCHISING SYSTEM, INC.  
VEHICLE HEIGHT DETECTOR  
STEEL MOUNTING PLATE

**Client:**  
Culver Franchising  
System, Inc.  
540 Water Street  
Prairie du Sac, WI 53578  
p (608) 643-7980

**SPRINGFIELD SIGN**  
4825 E. Kearney St.  
Springfield, MO 65803  
(417) 862-2454

# DRIVE-THRU

## Drive-Thru Canopy For Order Confirmation System (OCS)



## DTC-2

Drive-Thru Canopy

### SIGN DETAILS:

All aluminum construction

Rated for 160 mph & extreme northern 48 states snow load

Order Confirmation System (OCS) by others

Rear panel (door) access - lockable

Provides protection from rain for DT customer

Houses OCS, speaker & microphone

*Culver's*

SIGN & MENU BOARD BRAND STANDARDS  
WITH TECHNICAL SPECIFICATIONS

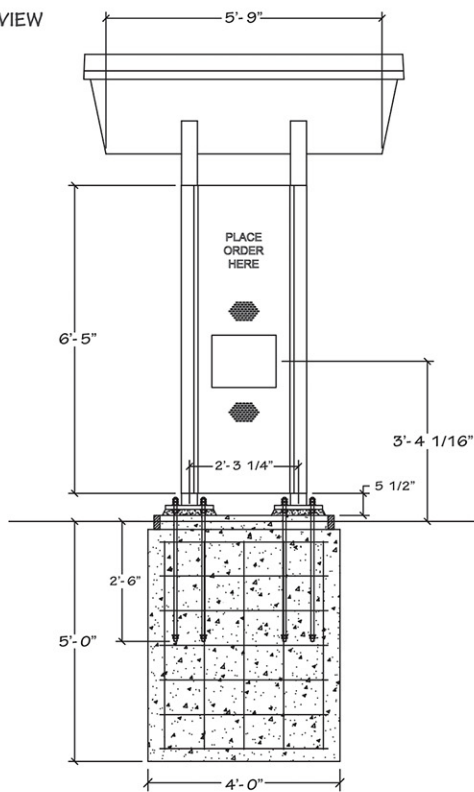
DTC-2

SCALE: 1/2" = 1'

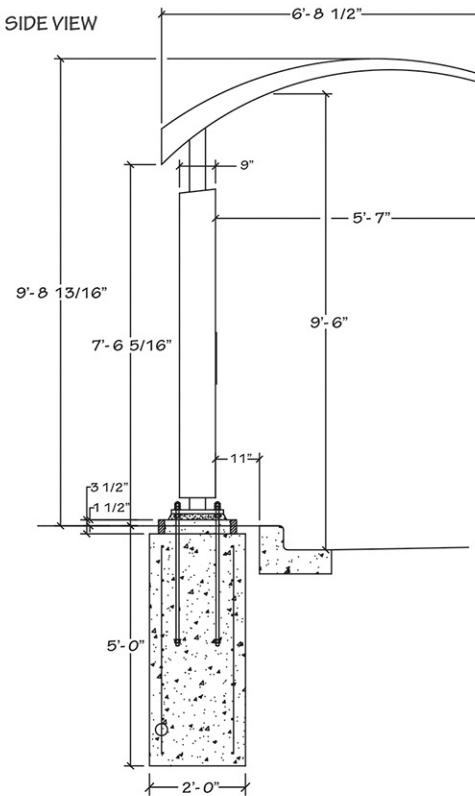
# DRIVE-THRU

## Drive-Thru Canopy Technical Specifications

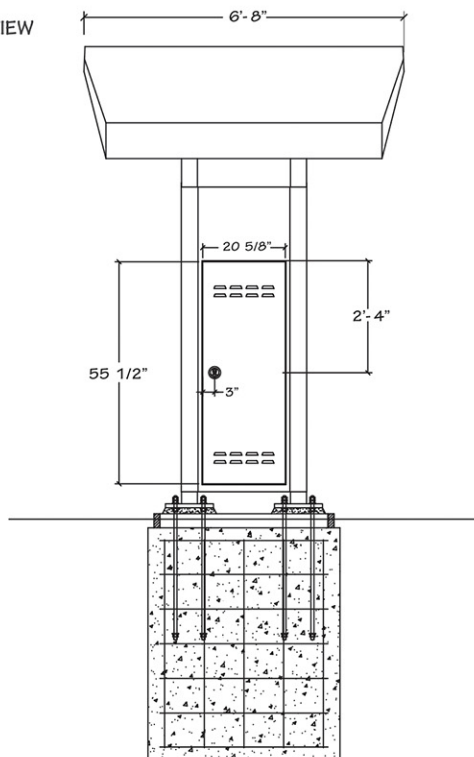
FRONT VIEW



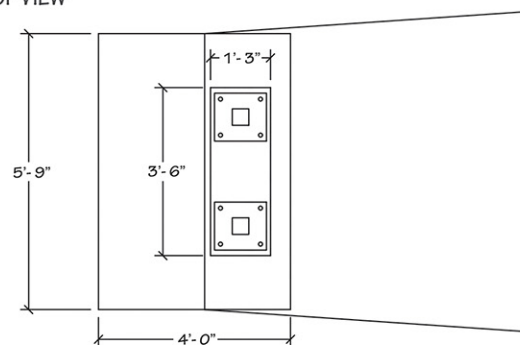
SIDE VIEW



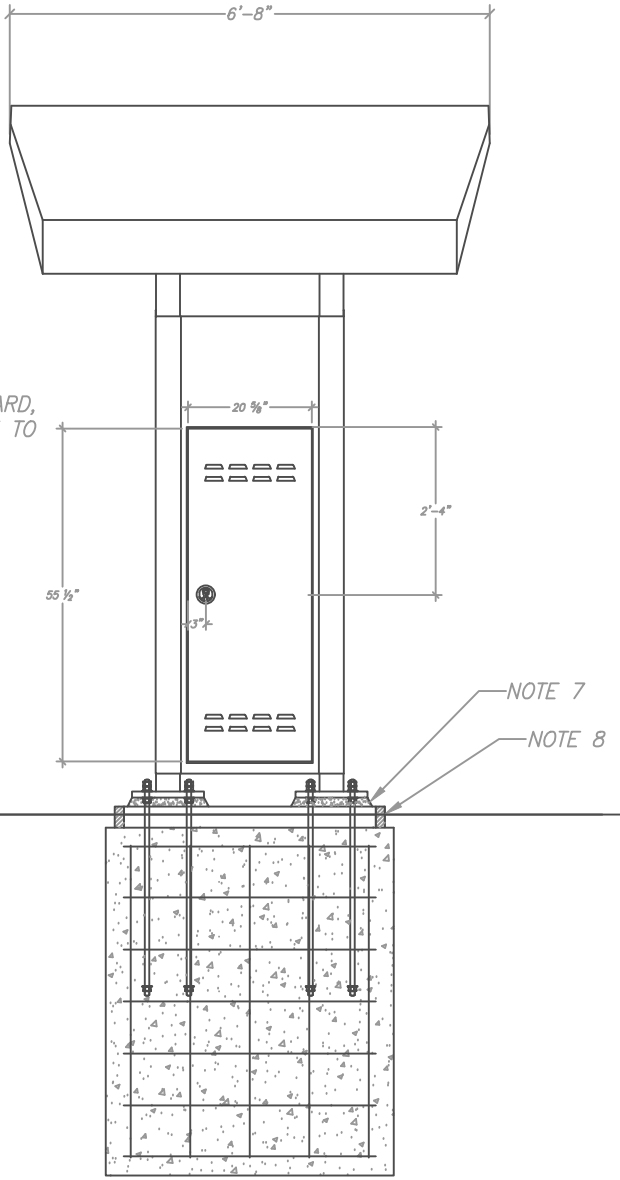
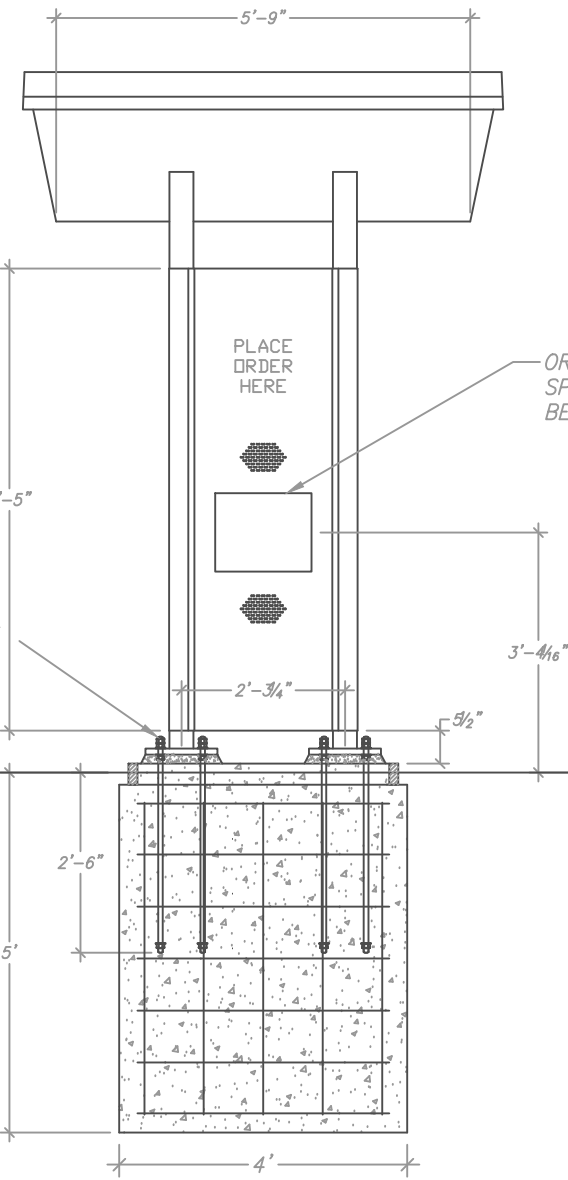
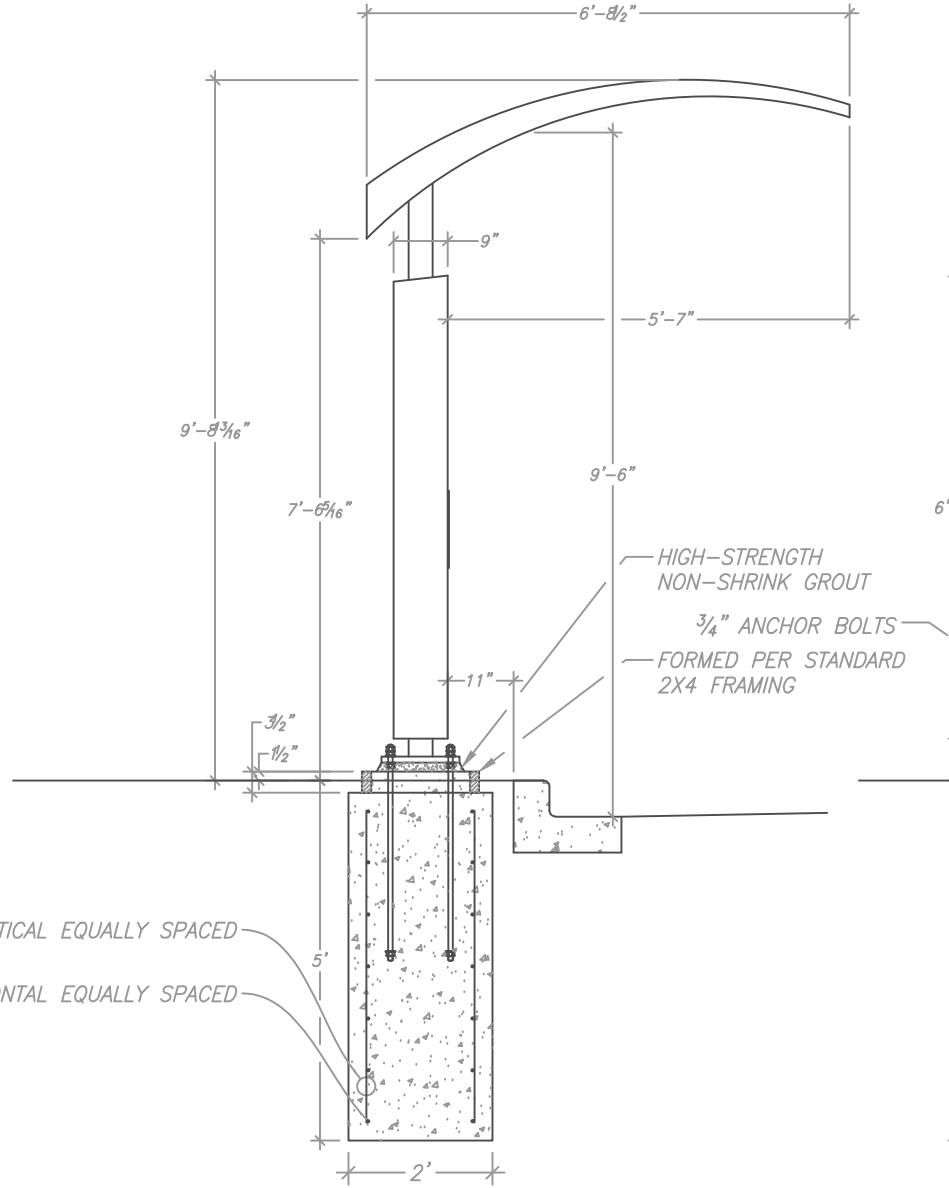
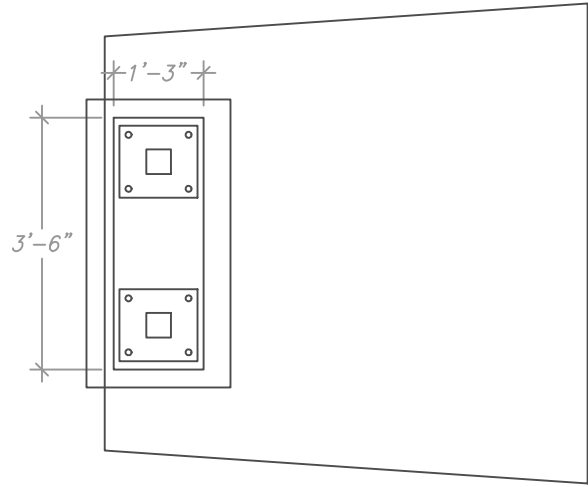
REAR VIEW



TOP VIEW



SCALE: 1/4" = 1'



- NOTE:
1. MULTIPLE CONDUIT CLUSTER, GC/ELECTRICIAN/POS/AUDIO TO SPECIFY & PROVIDE PRIOR TO POURING CONCRETE BASE (BY SIGN INSTALLER) TYPICAL REQUIREMENTS INCLUDE 1" CONDUIT (INDUCTIVE LOOP), 1" CONDUIT (AUDIO/HEADSET), 1" CONDUIT (SPARE NO POWER REQUIRED FOR HYPERACTIVE OCB - BUT CONFIRMATION OF THIS MUST BE VERIFIED BY GC (MAY REQUIRE ADDITIONAL CONDUITS))
  2. SIGN INSTALLER PROVIDED WITH CONDUIT & ANCHOR BOLT TEMPLATE - CONDUIT BUNDLE PASSES THROUGH TEMPLATE HOLE PRIOR TO POURING FOOTING.
  3. HYPERACTIVE OCB INSTALLS THROUGH OPENING PROVIDED & INSTALLED AND WIRED BY POS PROVIDER.
  4. SIGN INSTALLER PROVIDES EXCAVATION FORMING, REBAR, CONCRETE, COORDINATING WITH GC & FINISHING CONCRETE. DTC-2 CANOPY INSTALLED BY SIGN INSTALLER.
  5. ALL WIRING BY GC/ELECTRICIAN OR POS PROVIDER AS APPROPRIATE.
  6. LOWER SKIRT ASSEMBLY NOT SHOWN REFERENCE ADDITIONAL DRAWING.
  7. HIGH STRENGTH NON-SHRINK GROUT.
  8. FORMING LUMBER SHOWN (STANDARD 2X4)- TO BE REMOVED AFTER CONCRETE IS CURED.
  9. CLEARANCE MUST BE CONFIRMED. VEHICLE HEIGHT DETECTOR RECOMMENDED IN ADVANCE TO CANOPY FOR COLLISION PROTECTION

ORDER CONFIRMATION BOARD, SPEAKER, & MICROPHONE TO BE INSTALLED BY OTHERS

GRADE

SCALE 3/8" = 1'

CULVER FRANCHISING SYSTEM, INC.  
CANOPY AND ORDER CONFIRMATION SYSTEM-DTC-2

SPRINGFIELD SIGN  
4825 E. Kearney St.  
Springfield, MO 65803  
(417) 862-2454