

Brian

Attached please find the landscaping plans for
1111 South Tenth and 1110 S Tenth Street.

The required 15% green space square footage is noted along with **the existing**
square footage and **additional proposed**.

1110 S Tenth Street lot has 2992 sq. ft. of existing green space with the proposed
additional square footage requirement of 408 sq. ft. planned for arborvitae on
the west end of the south side.

1111 S Tenth Street has 16,044 sq. ft. of existing green space; the proposed
additional square footage requirement will be filled with arborvitae on the fence
line on the northerly end of the east side (abutting the school property); a climax
tree will be added to the north side; arborvitae will be planted on the south as
needed to complete the 18,705 sq. ft. requirement.

The *points* needed for street footage has also been determined:

The 1110 S Tenth Street lot has 120 ft. linear street footage requiring 21 points.
The existing trees and shrubs exceed that at 1,509 points.

1111 South Tenth Street has 529 ft. linear street footage requiring 121 points. The
existing trees and shrubs exceed that at 3,964.

1111 X Q

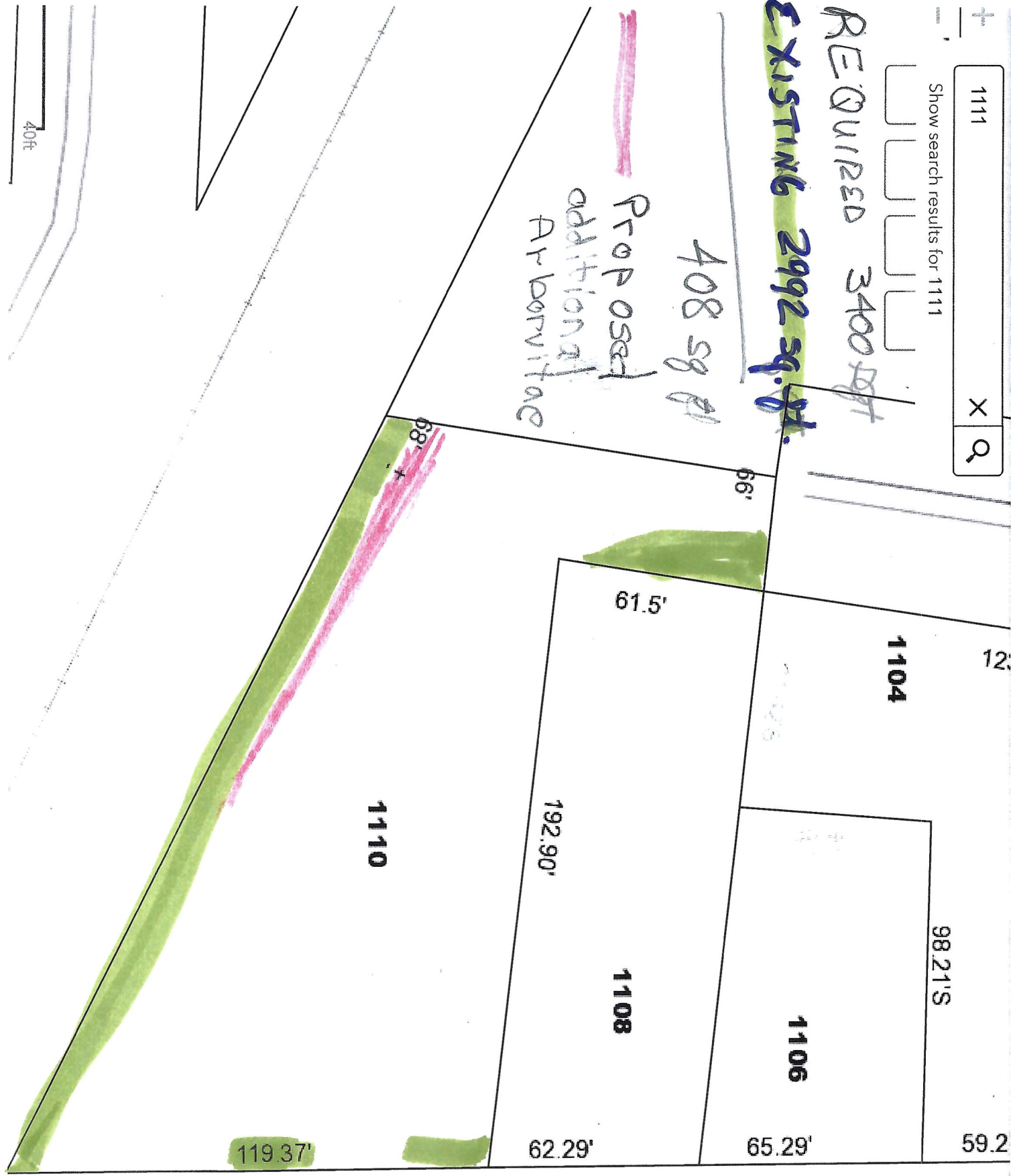
Show search results for 1111

REQUIRED 3400 sq ft

EXISTING 2992 sq ft

408 sq ft

Proposed
Additional
Arboretum



40ft

1111

Show search results for 1111

1108

1110

S TENTH ST

1109

1111

Proposed Climax Tree

Proposed Arborvitae

EXISTING

