



Quote No. Q10223 Version 3

Date: Dec 5, 2023

W 3150 Co Rd H, Fond du Lac, WI 54937

920-581-5810

www.sabelmechanical.com

Sabel Contact: Brad Parkhurst

Email: bparkhurst@sabelmechanical.com

Sabel Mechanical LLC

Customer Billing Information	Job Site Information	Contact and Other Information
Watertown WWTP 800 Hoffman Rd, Watertown, WI, 53094	Watertown WWTP 800 Hoffman Rd, Watertown, WI, 53094	Contact: Peter Hartz Phone: 920-285-4088 Email: phartz@ci.watertown.wi.us

Sabel Mechanical is pleased to submit this proposal for:

Scope of Work

1. Supply FRP Clarifier Launder Covers

\$142,931.75

Provide Nefco FRP Launder Cover Panels for Two (2) 90' Dia. Final Clarifiers #'s 1 & 2 per attached scope.

2. Launder Cover Installation

\$59,369.85

Labor, Equipment, and Materials to perform the following:

Installation of (2) FRP clarifier launders in Item #1.

Excludes draining and cleaning of clarifiers.

Quote Total: \$202,301.60

Estimate valid until: Jan 4, 2024

Customer Signature: _____ Date _____

Customer Name (Print) _____

P.O. #: _____

Due to the fluctuating material pricing and availability, quote is valid thru end of today's business day, Pricing may have to be adjusted at time of purchase and will be reflected when project is invoiced



January 23, 2024

Sabel Mechanical
W3150 Co Rd H
Fond du Lac, WI 54937

Re: Project: Watertown, WI
Purchase Order No. 3385
NEFCO's File No. 23111

For its convenience and in order to maintain a timely production schedule, NEFCO has prepared and does deliver herewith the submittal package for the above-referenced project. Since the terms and conditions of the purchase documents have yet to be finalized, please note that this delivery is not to be construed as part performance or acceptance of any terms of the subject purchase documents contrary to those disclosed in NEFCO's Quote dated March 24, 2023.

Sincerely,

Tracey Huffman
Contract Administrator
tracey@nefco.us



Sabel Mechanical
Attn: Brad Parkhurst
W 3150 Co Rd H
Fond du Lac, WI 54937

Project: Watertown WWTP Improvements
Watertown, WI

PO No: 3385
NEFCO No: 23111

January 23, 2024

LETTER OF TRANSMITTAL

Dear Brad Parkhurst,

Thank you for your order. Attached please find NEFCO Submittal Package for project "23111 - Watertown, WI " for your review and approval. Please review all aspects of the submittal, especially with regard to elevations, dimensions and offsets. Also, our records do not indicate a delivery date for this material. Kindly provide the delivery information including jobsite address and contact with phone number, and date required with the return of the submittal. Please view the table of contents for the list of supplied documents.

Thank you,

A handwritten signature in black ink, appearing to read "Ron Hollis", is written over a horizontal line. The signature is fluid and cursive.

Ron Hollis, PM



TM

SUBMITTAL PACKAGE

Watertown WWTP Improvements

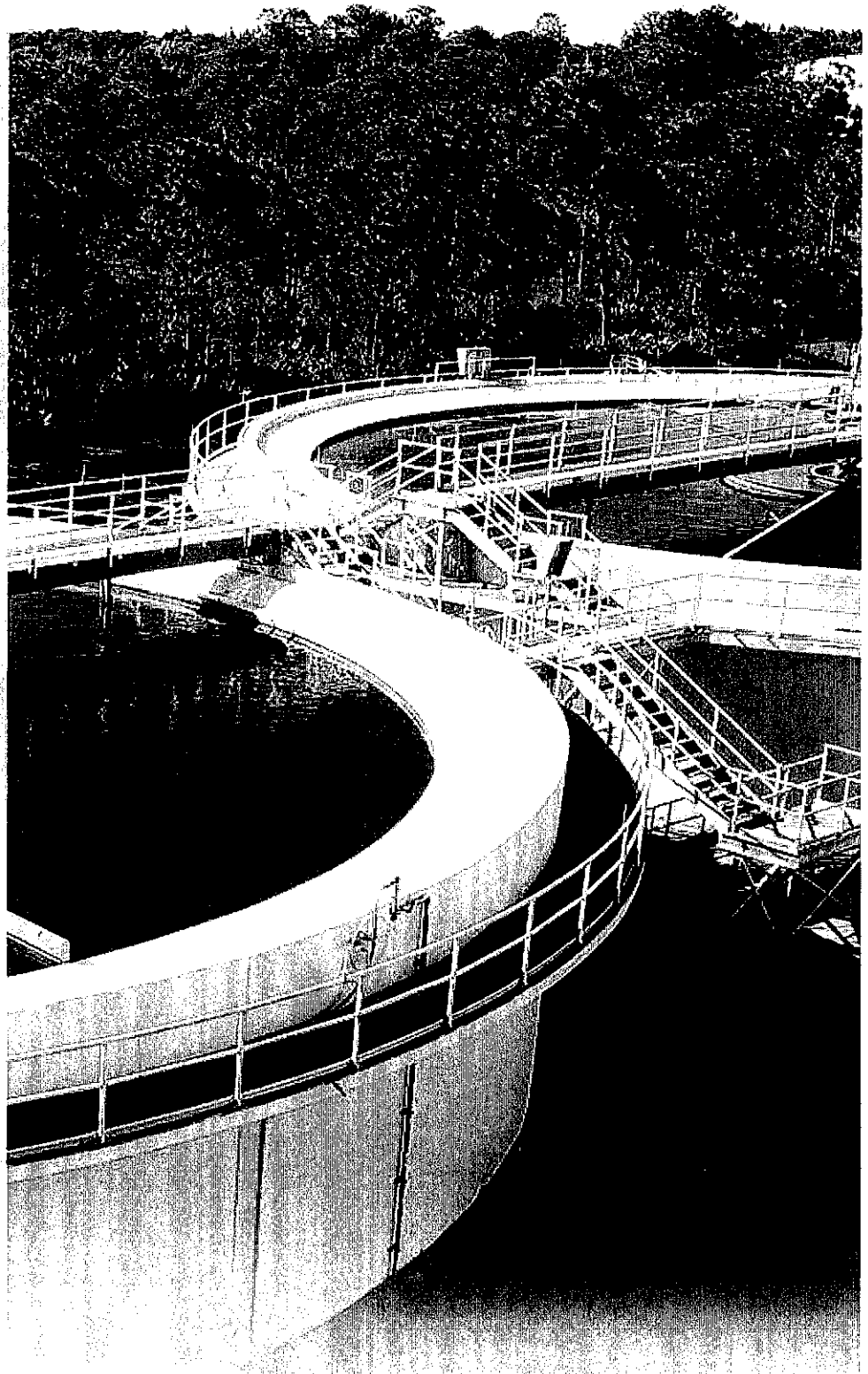
WATERTOWN, WI

Job No. 23111 - January 23, 2024

By Ron Hollis, PM

INCLUDED PRODUCTS

Launder Covers



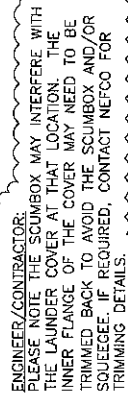
NEFCO Systems, Inc.
8895 N. Military Trail Bldg. C Suite 100
Palm Beach Gardens, FL 33410
Phone/Fax: (561) 775-9303 / 6043

www.nefco.us



Table of Contents

	<u>Total Pages</u>
Section 1: Launder Covers	
23111-1 FRP Launder Covers for (2) 90' dia Clarifiers #1 & #2	5



1. 2 TANK(S), DIAMETER AT COVER = #20-0"
2. COVER PANELS ARE CHOPPED STRAND FIB WITH 1/4" MINIMUM THICKNESS
3. IS MARINE WHITE
4. 20 MIL GELCOAT ON UPPER PANEL SURFACE, COLOR IS MARINE WHITE
5. 357-111 PLY FIB GLASS REINFORCEMENT OR EQUIVALENT, ADDITIONAL SURFING/REINFORCEMENT AS REQUIRED.
6. COREXTRA, CORTAS-40, ISO, ISOPHTHALIC RESIN OR EQUIVALENT, WITH ANHIDRO, 50% BLACK PIGMENT, MAY 5% FILL WITH ANHIDRO
7. PARTS SHALL BE GRABER BLACK BENDTITE GELCOAT SURFACE.
8. LAMINATE SHALL NOT HAVE LESS THAN 30% GLASS CONTENT
9. ONE-FOURTH INCH RADIUS IN ALL CORNERS
10. PARTS ARE KNIFE TRIMMED, WITH EXCES SAWNED AND NOT CONTOURED
11. ALL HOLES ARE FACTORY DRILLED UNLESS NOTED OTHERWISE
12. ALL FASTENERS AND HARDWARE ARE 304 SST UNLESS OTHERWISE NOTED
13. FIELD CUT PANELS AS REQUIRED FOR MANUFACTURERS

U.S. PATENT NO. 9,174,148
0.87% OSEB

ITEM		MATERIALS / TASK	
QTY	DESCRIPTION		
1	FRP COVER SECTIONS - PART A (WITH TABS)		
2	FRP COVER SECTIONS - PART B (WITHOUT TABS)		
3	FRP MOUNTING SECTIONS - PART C		
4	FRP SUPPORT FLANGE		
5	SST MOUNTING BRACKET		
6	SST LATCH		
7	SST LIFTING RING		
8	SST 2 1/2" X 48" CONTINUOUS HINGE WITH 1/4" X 3/4" HEXHEAD BOLT, WASHER, INLOCK NUT		
9	SST 3/8" X 3 3/4" EXPANSION ANCHOR, NUT, WASHER (MOUNTING BRACKET & SUPPORT FLANGE TO TANK)		
10	SST 1/4" X 1 1/4" HHMB, NUT, (2) WASHERS, LOCK WASHER (COVERS TO BRACKETS, MOUNTING SECTION CONNECTION)		
11	SST 1/8" X 3" - 6" COVER RESTRAINT ASSEMBLY		

FINAL SETTLING TANK NO. 1 & 2
COVER LAYOUT PLAN VIEW
(NO SCALE)

(No scale)

ENGINEER/CONTRACTOR:

PLEASE NOTE THE SCUMBOX MAY INTERFERE WITH THE LAUNDER COVER AT THAT LOCATION. THE INNER FLANGE OF THE COVER MAY NEED TO BE TRIMMED BACK TO AVOID THE SCUMBOX AND/OR SQUEEGEE. IF REQUIRED, CONTACT NEFCO FOR TRIMMING DETAILS.

NOTES:

1. 2. TANK(S). DIAMETER AT COVER = #20-0"
3. COVER PANELS ARE CHOPPED STAINED FIR WITH 1/4" MINIMUM THICKNESS.
4. MINIMUM 20 MIL BELOCON ON UPPER PANEL, SURFACE, COLOR IS MARINE WHITE.
5. 37-171-PIN COT BELOCON GLASS REINFORCEMENT OR EQUIVALENT.
6. TOPPING SUPPORT/REINFORCEMENT AS REQUIRED.
7. COBEXON, COPTAS, ARO-010, ISOPHTHALIC RESIN OR EQUIVALENT, WITH MINIMUM 0.5% BLACK PIGMENT, MAX 5% FILL AND 10% SUPPRESSED.
8. PARTS SHALL BE OPAQUE BLACK BENEATH BELOCON SURFACE, WITH NO FIBER SHOWING.
9. LAMINATE SHALL NOT HAVE LESS THAN 30% GLASS CONTENT
10. ONE-EGGHT INCH ROUNDS IN ALL CORNERS
11. PARTS ARE KNIFE TRIMMED, WITH EDGES SAWNED AND HOT COATED.
12. ALL HOLES ARE FACTORY DRILLED UNLESS NOTED OTHERWISE.
13. ALL FASTENERS AND HARDWARE ARE 304 SST UNLESS OTHERWISE NOTED
14. FIELD COT PANELS AS REQUIRED PER MANUFACTURERS

PATENTS:

U.S. PATENT NO. 9,174,148
0.87% OSEB

ITEM		MATERIALS / TASK	
QTY	DESCRIPTION		
1	FRP COVER SECTIONS - PART A (WITH TABS)		
2	FRP COVER SECTIONS - PART B (WITHOUT TABS)		
3	FRP MOUNTING SECTIONS - PART C		
4	FRP SUPPORT FLANGE		
5	SST MOUNTING BRACKET		
6	SST LATCH		
7	SST LIFTING RING		
8	SST 2 1/2" X 48" CONTINUOUS HINGE WITH 1/4" X 3/4" HEXHEAD BOLT, WASHER, INLOCK NUT		
9	SST 3/8" X 3 3/4" EXPANSION ANCHOR, NUT, WASHER (MOUNTING BRACKET & SUPPORT FLANGE TO TANK)		
10	SST 1/4" X 1 1/4" HHMB, NUT, (2) WASHERS, LOCK WASHER (COVERS TO BRACKETS, MOUNTING SECTION CONNECTION)		
11	SST 1/8" X 3" - 6" COVER RESTRAINT ASSEMBLY		

FINAL SETTLING TANK NO. 1 & 2
COVER LAYOUT PLAN VIEW
(NO SCALE)

(No scale)

BASIC LAUNDER COVER INSTALLATION INSTRUCTIONS:

IMPORTANT NOTES:

PLEASE READ ALL OF THE INSTRUCTIONS BEFORE STARTING THIS INSTALLATION!

THE COVER INSTALLATION WILL BEGIN AT THE ACCESS BRIDGE AND PROCEED FROM THERE IN A COUNTERCLOCKWISE MANNER. VERIFY ALL PERTINENT ELEVATIONS, DIAMETER, SIZES, ETC. BEFORE HAND. LOCATION AND DIRECTION FOR THESE INSTALLATION INSTRUCTIONS ARE DESCRIBED AS IF LOOKING OUTWARD FROM THE CENTER OF THE TANK (IE: TO THE RIGHT IS CLOCKWISE AND LEFT IS COUNTERCLOCKWISE, ETC.).

IT IS CRITICAL TO PLAN THE LAYOUT PRIOR TO INSTALLING THE COVERS. IF YOU HAVE ANY QUESTIONS REGARDING ANYTHING, PLEASE CALL US FIRST AT

(561) 775-9303.

BASIC INSTRUCTIONS:

- 1) First verify the maximum outside width of the Access Bridge at 3'-0" as shown including the supporting structure and continue if OK, otherwise call NEFCO immediately at the phone number listed on these plans. Locate the radial centerline of the access bridge as it would extend back to the center of the tank. Transfer the line down the inside face of the outermost tank wall, creating a vertical centerline mark down both sides of the weir wall, on top of the weir wall and both sides of the scum baffle as well. All vertical center lines should lie directly under the "imaginary centerline" of the access bridge walkway. Go to Step-2.
- 2) VERIFY THE TANK CIRCUMFERENCE (282'-8 15/16") to the diameter (890'-0") as shown. Use a piece of 1/2" diameter PVC pipe OUT EXACTLY 10.10 FT (OR 20 FT) to help obtain the measurement precisely along the tank wall inner curvature by pulling it back tight against the tank wall. From the access bridge centerline established above, place the trailing edge of the pipe on the access bridge centerline then carefully mark the leading end of the pipe on the tank wall. Move the pipe around the tank taking great care to scribe each successive vertical line exactly and then relocate the trailing end of the pipe exactly over the previous scribed line. Measure the last distance (less than a pipe length) back to the starting point & with a tape measure. Add the tape measurement to the total number of 10FT (or 20FT) lengths measured to obtain the overall tank circumference length. Compare this to the design circumference above and IF THE OVERALL CIRCUMFERENCE VARIES BY MORE THAN ONE INCH, re-measure the circumference in the opposite direction. IF INCORRECT, CALL NEFCO IMMEDIATELY. If OK, go to Step-3.
- 3) Divide the actual circumference length for the tank from Step-2 by the number of cover assemblies required to be installed (24 sets, 48 covers). The design length from center to center of adjacent covers at the tank wall is 5'-10 11/16" (±). IF THIS VARIES BY MORE THAN 1/8" PER SECTION, CONTACT NEFCO, INC., IMMEDIATELY. If O.K., starting at the access bridge centerline established in Step-1, mark equal spaced centerlines for each cover assembly around the tank along exterior wall just above the proposed top elevation of the FRP Support Flange as shown.
- 4) Layout the elevation and location of the FRP Support Flange (kerfed angle) around the tank outer perimeter wall. The Support Flanges are supplied in 10 FT lengths. The Support Flange installation may begin anywhere EXCEPT AS NOTED BELOW. Mark the anchor locations on the wall using the factory drilled holes in the Support Flange. Remove the flange, drill the wall holes and install the 3/8" anchors. (NOTE: When installed properly, the anchor should extend from the concrete through the FRP Support Flange, washer and nut plus approximately 3/8" to 1/2" of exposed thread for the Cover Cable Restraint installation later in Step-10). Secure the Support Flange to the wall. Continue installing the Support Flange around the tank wall. Field measure, cut and install the last section to fit. (SPECIAL NOTE: If the circumference of the tank wall is interrupted by an opening, you must start the Support Flange installation by centering the first section to span across this area as if the concrete wall continued to curve around the tank. It is important for the support flange to maintain the proper wall curvature throughout this area for the covers to fit correctly.
- 5) The launder covers are provided in two panel configurations - 'A' and 'B'. The 'A' covers have overlapping flanges at each side which will cover the adjacent 'B' covers. The 'A' and 'B' covers each attach to a Weir Mounting Section (Part C) via the continuous stainless steel hinge. Connect the panels together at the hinge using the supplied 1/4" diameter HMB fasteners. Next, locate the midpoint of each 'A' and 'B' cover assembly along the outer "curved" edge of the Cover Section and along the innermost "curved" edge of the Weir Mounting section. Place a small pencil mark on the cover surface at each midpoint location to provide an alignment mark for Step-7 with the previous marks established in Steps-1 & 3 above.
- 6) Begin the cover installation at the center of the access bridge with one cover assembly. First, attach the (3) SST Mounting Brackets to the underside of the fixed Weir Mounting Section as shown in cross Section A-A and the Top View using the 1/4" HMB fasteners. Temporarily position the whole

assembly (right side up) with the 'B' cover directly under the access bridge from the outer FRP Support Flange to the Scum Baffle. Center the assembly using the vertical line marks established in Steps-1, 3 and 5. Clamp the outer edges of the cover assembly to the FRP Support Flange along the tank wall at the corners with a "soft" clamp while resting the SST brackets on the weir wall. Make adjustments as necessary to line the center of the cover to the centerline marks established in Step #1 & 3. Mark the bottom SST bracket anchor locations on the top of the weir wall using the slotted holes in the brackets. Remove the cover assembly, drill the anchor holes in the top of the weir wall, install the anchors, then reinstall the brackets over the 3/8" anchors. Reposition the cover assembly as before and secure the brackets to the anchors. CONTACT NEFCO, INC., IMMEDIATELY IF YOU HAVE ANY QUESTIONS BEFORE YOU BEGIN THIS PROCEDURE.

7) Move to the left of the bridge support, attach (3) SST Mounting Brackets to the underside of the fixed Weir Mounting Section of a Cover Assembly as shown in cross Section A-A and the Top View using the 1/4" HMB fasteners. When complete, temporarily position the whole assembly (right side up) from the outer FRP Support Flange to the Scum Baffle. Clamp the outer edges of the cover panel assembly to the FRP Support Flange along the tank wall at the corners with a "soft" clamp while resting the SST brackets on the weir wall. Make adjustments as necessary to align all centerline marks together with the proper gaps and offsets as shown in the Raised Tab Profile and Cross Section. Mark the bottom of the SST bracket anchor locations on the top of the weir wall using the slotted holes in the brackets. Remove the cover assembly, drill the anchor holes in the top of the weir wall, install the anchors, then reinstall the brackets over the 3/8" anchors. Reposition the cover assembly as before, then secure the brackets to the anchors.

8) Continue installing the cover assemblies around the tank until complete. MAKE SURE ALL SPACINGS, DISTANCES, OVERLAPS, ETC. ARE CONSTANTLY CHECKED AND VERIFIED AS YOU GO! (SPECIAL NOTE: DEPENDING UPON THE TANK CONFIGURATION AND RESPECTIVE EQUIPMENT UTILIZED, THE INNER MOST FLANGE OF THE WEIR MOUNTING SECTION MAY INTERFERE WITH THE SCUM TROUGH/BOX STRUCTURE IF NOT FIELD TRIMMED. CONTACT NEFCO FOR TRIMMING INSTRUCTIONS IF APPLICABLE).

9) Make all final cover adjustments as required, then install lap fasteners between Weir Mounting Sections as follows: Using a soft clamp, clamp two adjacent Weir Mount Sections together, then field drill two 5/16" holes through both mounting sections at the factory detents located on the left end of the Weir Mounting Section approximately 1-1/4" in from the edge. Secure together with the same SST fasteners supplied for the SST Bracket to cover attachment.

10) After final cover adjustments are complete, install miscellaneous optional hardware like lifting rings, latches or cover cable restrainers. THE LATCH MECHANISM, when properly installed, is designed to use the handle above the cover to indicate the position of the latch tab and detent below the cover by both pointing in the same direction. Make sure that the latch handle detent is engaged for proper alignment and locking. THE COVER CABLE RESTRAINT, must be field located at both ends. First, Secure the coupling nut end to the exposed end of the closest FRP Support Flange 3/8" anchor about the midpoint of each cover near the wall. Next field locate and drill a #5/16" hole near the latch/lifting ring assembly for the eyebolt end to be attached. (See "COVER CABLE RESTRAINT ASSEMBLY" on Sheet-5).

11) THIS CONCLUDES THE BASIC COVER INSTALLATION INSTRUCTIONS.

NEFCO SYSTEMS
8899 NORTH MILITARY TRAIL
BUILDING-C, SUITE 100
PALM BEACH GARDENS, FL 33410
(561) 775-9303
www.nefco.us



P.O. 3385

APPLIED TECHNOLOGIES
SABEL MECHANICAL

CONTRACTOR:
(2) B 90-0 FINAL COVERS FOR #1 & #2

WATER TOWN WTRP IMPROVEMENTS
WATER TOWN, WI

PROJECT:

ENGINEER:
DESIGNER:
CHECK BY:
PROJECT MGR:
SCALE:
DATE:
DWG NO:
SHEET NO:

QER	23111-1
SCALE:	3 OF 5
DATE:	

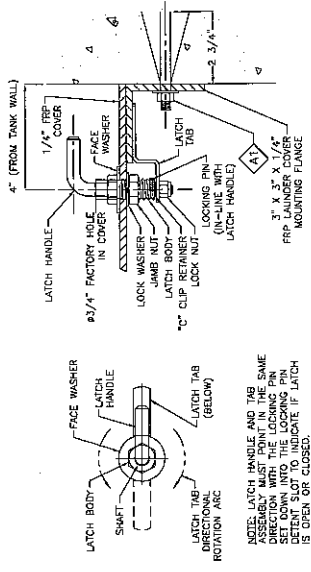
NO.	DATE:
REVISIONS:	DESCRIPTION:

NEFCO SYSTEMS
8895 NORTH MILITARY TRAIL
PALM BEACH GARDENS, FL 33410
(561) 775-9303
WWW.NEFCO.US

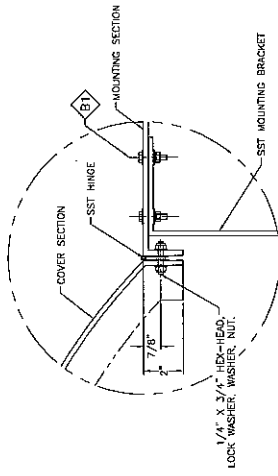


PROJECT: WATER TOWN WMP IMPROVEMENTS
WATER TOWN, WI
TITLE: FRP LAMINER COVERS FOR (2) Ø 90° FINAL CLAMMERS #1 & #2
CONTRACTOR: SABEL MECHANICAL
ENGINEER: APPLIED TECHNOLOGIES
P.O. 3385

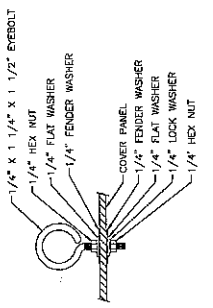
DWG BY: OER
CHK BY: JG
PRJ MGR: BH
SCALE: N.T.S.
DATE: 1/9/2024
DWG NO: 23111-1
SHEET NO: 4 OF 5



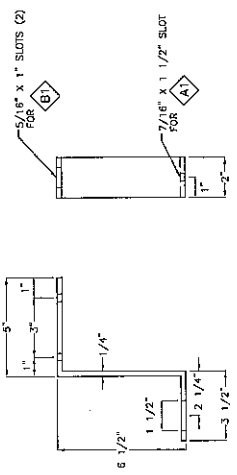
TOP VIEW
CROSS SECTION DETAIL
SST LATCH (A' PANEL)
(24 PCS/PANEL - 48 TOTAL)



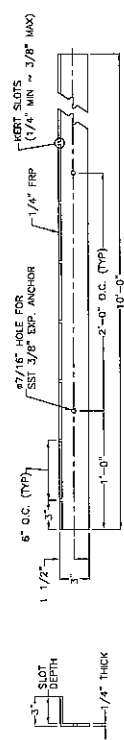
SST HINGE DETAIL
(NOT TO SCALE)



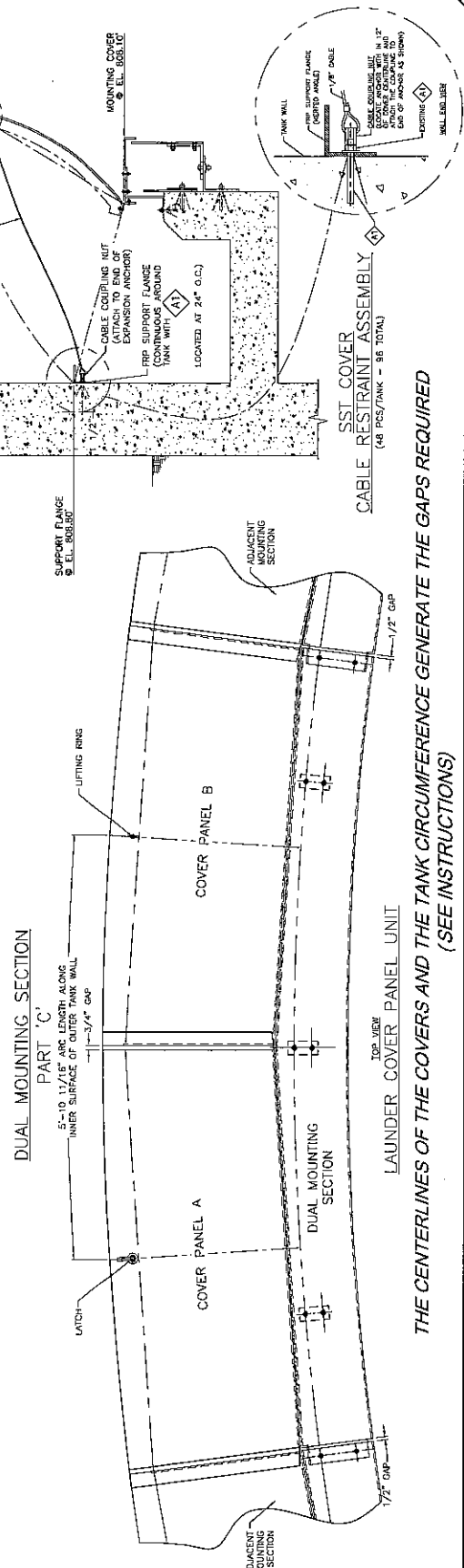
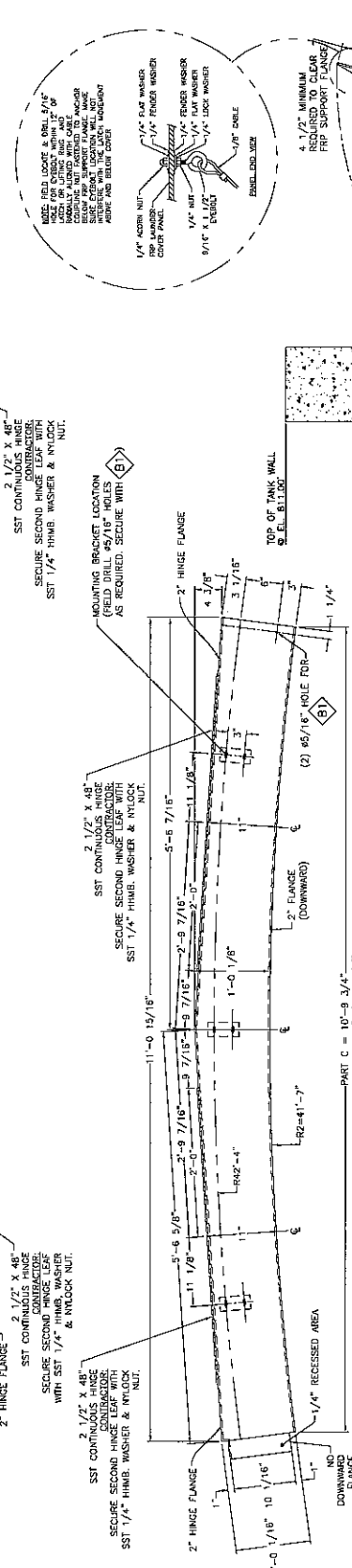
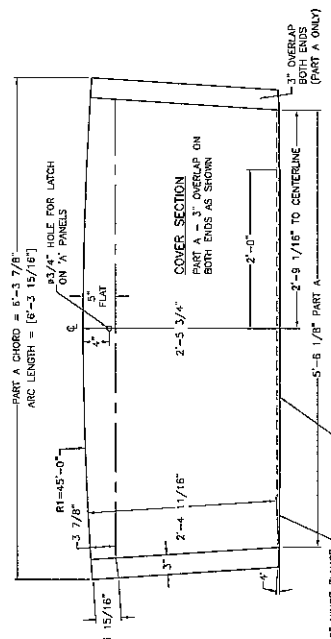
FRONT VIEW
SST LIFTING RING (B' PANEL)
(24 PCS/PANEL - 48 TOTAL)



FRONT VIEW
SIDE VIEW
SST MOUNTING BRACKET
(3 PER PANEL UNIT - 72 PCS/PANEL - 144 TOTAL)



FRONT VIEW
END VIEW
FRP SUPPORT FLANGE
(28 PCS/PANEL - 56 TOTAL)



THE CENTERLINES OF THE COVERS AND THE TANK CIRCUMFERENCE GENERATE THE GAPS REQUIRED
(SEE INSTRUCTIONS)

NO.	DATE:	DESCRIPTION:

NEFCO SYSTEMS
8895 NORTH MILITARY TRAIL
BUILDING-C, SUITE 100
PALM BEACH GARDENS, FL 33410
(561) 775-9303
www.nefco.us



WATEROWN, WI	FRP LAUNDER COVERS FOR Ø 90"-Ø FINAL CLARIFIERS #1 & #2	SABEL MECHANICAL	P.O.	TECHNOLOGIES	3385
--------------	--	------------------	------	--------------	------

PROJECT:	DWG NO:	OER	23111-1
TITLE:	CHK BY:	JG	5 OF 5
CONTRACTOR:	PRJ MG:	RH	
ENGINEER:	SCALE:	N.T.S.	
AP	DATE:	1/9/2024	

Pete Hartz

Subject: FW: Grit Removal

From: Paul Schuette <PSchuette@drydon.com>

Sent: Thursday, July 27, 2023 2:21 PM

To: Pete Hartz <phartz@watertownwi.gov>

Subject: RE: Grit Removal

I sent the pricing below in my original quote to you: *Price is \$149,440 for the materials. They add to this the estimated freight cost of \$8,000 (listed in proposal). An additional \$3,000 is requested for 'installation checkout' (to cover the trip expense and one day onsite). My guess is that they could check this out in one day. So it would be \$160,440 including freight and a service trip.*

AW probably put a few % on that number because they needed to carry the paper.

Thanks!

Paul

c: 262-309-1990

Best Regards,

Paul Schuette



Drydon Equipment Inc.

Cedarburg Office

P: (262)618-4651

C: (262)309-1990

F: (262)827-9203

See our manufacturers at: www.Drydon.com

Confidentiality Notice

This message, including any attached file, is intended only for the use of the individual or entity to which it is addressed. It may contain information that is privileged, confidential and exempt from disclosure under applicable law. If the reader of this message is not the intended recipient, you are hereby notified that any use, dissemination, distribution, copying or disclosure of this communication is strictly prohibited. If you have received this communication in error, please notify us immediately by reply e-mail and delete all copies of the original communication. Thank You.

From: Pete Hartz <phartz@watertownwi.gov>

Sent: Thursday, July 27, 2023 2:18 PM

To: Paul Schuette <PSchuette@drydon.com>

Subject: RE: Grit Removal

You didn't share the price for the launder covers, that quote was blank. August Winters did not break out the cost either so it might not be them at all, rather the supplier.

Pete



Proposal No. 23P044 Rev. 1

Date: 4/6/2023

To: All Bidding Contractors



Project: Watertown WWTP
 Bid Date: 4/6/2023
 Location: Watertown, WI
 Spec Section: None
 Drawing #: Customer supplied photos of drawings (3)
 Addenda: NA
 Rep Firm: Drydon Equipment – Paul Schuette
 Enduro Sales Rep: Matt Sumbera, Bob Strack

Enduro is pleased to provide this proposal based upon the following scope of work:

A. Secondary Clarifiers 1&2 - FRP Light Weight Launder Cover System (Non-Walk On) for 2-90 ft diameter concrete tanks w/internal launders - Materials are listed per tank:

- FRP Light Weight Algae Launder Cover panels, approx. 6.0 ft lg x 40" w x 1/4" tk., molded to the tank outer launder wall curvature at 90 FT OD (48ea/tank) (Approx. weight per panel = 46 LBS). (Assume 24" wide launder plus 8" weir wall).
- Launder cover extends from the tank outer tank wall to a point beyond the weir to the scum baffle to form a continuous rigid structure over the effluent launder and weir.
- **Unique one-piece molded cover design opens conveniently and completely to provide full access for inspection and maintenance of the entire launder and weir area as required.**
- **FRP launder cover system is designed to withstand the anticipated loads but shall not be intended as a "walk-on" cover designed to support the weight of plant personnel.**
- FRP operable sections allowing the cover to swing open toward the tank center and away from the operator. Cover includes overlapping tab to block direct sunlight from entering between panels yet allows access around the launder from the access bridge location.
- Hardware and accessories included.
- FRP continuous support angle along the tank wall inner perimeter.
- 316 SST/FRP cover supports at the weir wall to allow operable cover section to rotate open fully.
- 316 SST Cover latch and restraint cable system.
- Full complement of 316 SST 3/8" rod type adhesive anchors and fasteners (*Adhesive not by Enduro*).

1. Proposal is based on these assumptions:

- a. FRP thickness as stated U.O.N.
- b. Premium grade corrosion resistant FRP Isophthalic polyester resin, UV suppressed.
- c. Enduro Composites is ISO 9001 Certified.
- d. Material is NSF-61 approved (if required for potable water).
- e. Weirs and scum baffles per AWWA F102 Standards (if applicable).
- f. Troughs are per AWWA F101 Standards (if applicable).
- g. Certified signed and sealed calculations and drawings are not included U.O.N. (see Section 2 for more information).



- h. 316 SST fasteners and/or anchors as indicated. *(Note: If adhesive type anchors are supplied, the adhesive, adhesive applicators, special tools or equipment and consumables are not included – these are supplied by others).*
- i. Field trimming by the installer may be required (associated equipment, tools, sealant, consumables, etc. not included – supplied by others).
- j. The proposal is based on the applicability of EPA De Minimis Waiver of Section 436 of P.L. 113-76, Consolidated Appropriations Act of 2014.
- k. FRP material is manufactured by Pultrusion or Open Mold methods.
- l. The color shall be Enduro standard dark gray.
- m. The manufacturer's standard one-year material warranty from delivery date applies unless stated otherwise in the clarification/exception section.
- n. O&M Manuals – if applicable (electronic version only)
- o. Freight – See Terms for information.
- p. Submittal/Installation Drawings (11" x 17" sheets).

2. Clarifications/Exceptions:

- a. Clarification: Not all dimensions and/or arrangement information is indicated in the plan and specified information. This offering attempt to describe the listing of FRP product materials sized and spaced according to project information received, standard industry practice, as well as AWWA standard F101 for launder troughs or F102 standard for weirs and scum baffles where applicable. Enduro makes no claim to the accuracy or completeness of the design information provided. Customer to provide field measurements for each location of weirs to be replaced in each tank to confirm this offer and subsequent submittal information is correct. Additional or alternate requirements from those offered will be reconsidered and priced accordingly.
- b. Clarification: Enduro offers a standard launder cover without consideration of special loading, seismic or sloshing requirements. Additional requirements will be considered and priced accordingly.
- c. Clarification/Exception: Enduro offers our standard launder cover with signed and sealed calculations and drawings by a registered professional engineer. Design criteria which are highly dependent on local conditions and characteristics and cannot truly be determined until the exact design is produced and subjected to 3rd party structural review for conformity to the plan and specifications. In the event additional conditions such as seismic, wind, local building codes, etc. are required from our standard configuration, the cost of design review by 3rd party engineer and any adjustment to the design quoted shall be reevaluated by Enduro and repriced accordingly.
- d. Clarification/Exception: Enduro offers rod type anchors (adhesive not included) to meet most current anchor requirements. Request for standard or special type expansion anchors in lieu of adhesive type will be reviewed and price accordingly.
- e. Clarification: Enduro offers our unique standard light weight one-piece algae launder cover design which opens conveniently and completely inward away from the operator to provide for full access to inspection and maintenance of the entire launder area as well as the weir to scum baffle area. Cover is designed to provide effective reduction of algae growth and as such, reduce the cleaning maintenance required along with the personnel risk associated with that task. In addition, cover also helps to prevent windblown debris from entering the launder and it may also help to contain minor odors if present from leaving the tank. FRP launder cover system can



support its own weight, plus common wind and snow loads while subjected to 3rd party structural engineering signed and sealed calculations if required; yet is not designed as a walk on cover for plant personnel. The cover comes complete with locking latch and restraint cable to restrict the cover from opening too far and avoids obstructing the mechanism while in operation as specified.

- f. Clarification/Exception: Enduro standard warranty period of one (1) year commences on the FRP products offered from the time of delivery. Such warranties shall cover all defects or failures of materials or workmanship which occur as the result of normal operation and service except for normal wear parts. The parts shall be repaired or replaced at Enduro's discretion. Warranty excludes on-site work to replace products supplied in this offering. Extended or expanded warranties are available. Additional requirements beyond the scope of our standard warranty offered will be considered and priced accordingly.

3. Proposal does not include:

- a. Staging, storage, unloading, installation, field labor or testing of any kind.
- b. Site visits, or field advisor, unless included in the Scope of Work or Inclusion Section.
- c. NOTE: Enduro does not include any field visits in this proposal. If a field visit is required Enduro will only verify that the products have generally been installed per our field drawings. Enduro does not certify construction methods. If field visits are required, please add \$3000 per trip and \$1000 per day after day 1. Enduro requires 4-6 weeks' notice prior to the required date, anything sooner can be looked at for an expediting fee.
- d. Grout, gaskets, sealant, adhesive, caulk, etc. unless specified herein.
- e. Spare parts.
- f. Pipe flanged bolt and gasket sets.
- g. O&M Manuals if applicable (hardcopies).
- h. Taxes, permits, duties, brokerage fees, or bonds.
- i. Any material to modify concrete or other adjoining material surfaces.
- j. Miscellaneous stainless-steel hardware unless otherwise noted in scope above.
- k. Compliance with Specifications, Drawings, or Addenda not listed in this proposal.

4. Terms:

- a. FOB Factory (Houston, TX). Pricing excludes freight to jobsite – see Section 7 for more details.
- b. Pricing is valid for purchase orders or Letter of Intent received and accepted within 30 days from the date of the proposal, for goods to be released to manufacture within 180 days from the date of the proposal, provided release for shipment is authorized upon completion of the goods. Pricing may be revised on orders/LOI received more than 90 days after proposal. Orders not released for manufacture within 180 days of the date of the proposal or released for manufacture but not released for immediate delivery upon completion of the goods, are subject to Enduro's Price Escalation Index. A copy of the index provisions is available upon request.
- c. Payment terms (subject to credit approval): Minimum 10% due upon delivery of submittals, additional 10% upon approval of submittals.
- d. Proposal per Enduro Composites' standard terms & conditions.

5. Estimated Lead Time for Submittal Package:

- a. 6-8 weeks after execution of contract
- b. Each PE review/certification shall add 1-2 weeks each.



- c. A more detailed lead shall be provided after contract execution.
- d. The proposal is based on (2) re-submittals after the original submittal package is submitted.
Additional re-submittals can be provided at an additional cost.

6. Estimated Lead Time for Shipping:

- a. 9-11 weeks after written approval of submittal package for Weirs and Baffles.
- b. 10-16 weeks after written approval for submittal package for sprayed up parts.
 - More detailed lead time will be provided after approval of submittal package.
 - Delays in approvals may cause longer lead times.

**Lead times may vary based on raw material availability and will be determined after approved submittal and release to manufacture.*

7. Price (USD): Contact Drydon Equipment.

Estimated FREIGHT COST IS NOT included in total or unit prices. The actual charge shall be based on weight and freight cost at time of shipment. Estimated freight cost for one dedicated/partial flatbed or LTL motor freight is \$8,000.00

We look forward to working with you and hope this proposal meets with your satisfaction.

Matthew Sumbera
National Sales Manager - USA & Canada
Water Wastewater Structures
Email: msumbera@endurocomposites.com

Bob Strack
Director – Clarifier Products
Water Wastewater Products
Email: bstrack@endurocomposites.com

TERMS AND CONDITIONS OF SALE

1. DEFINITIONS

P 713.358.4000 | F 713.358.4100 | T 800.231.7271 | E sales@endurocomposites.com
16602 Central Green Blvd. | Houston, TX 77032

www.endurocomposites.com



AUGUST WINTER & SONS, INC.
MECHANICAL CONTRACTOR & FABRICATOR

www.augustwinter.com

2323 N. Roemer Road
Appleton, WI 54911
PO Box 1896
Appleton, WI 54912-1896
P: (920) 739-8881
F: (920) 739-2230

5613 Schofield Ave.
Schofield, WI 54476
P: (715) 355-7555
F: (715) 355-9048

May 5, 2023

TO: **City of Watertown**
Attn: Pete Hartz
Timothy Hayden

RE: **Watertown Launder Cover Install**
(AWS Bid 23-00740)

We are pleased to provide you with our proposal for the above-mentioned project.

We offer the above for the sum of \$271,000.00

Our proposal includes the following:

- ◆ Furnish and install launder covers on (2) 90" clarifiers (Enduro FRP)

Note: Current lead times:

- ◆ Submittals – 6 to 8 weeks
- ◆ Delivery after approval – 10 to 16 weeks

We exclude the following items:

- ◆ Restoration of lawn or site
- ◆ Asphalt/concrete patching
- ◆ Weirs/baffles adjustments or replacement
- ◆ Dumpster charges (we will deposit our debris in dumpsters provided by others)
- ◆ Painting
- ◆ Overtime
- ◆ Dewatering of clarifiers
- ◆ Bonds
- ◆ Sales and use tax
- ◆ State plan approval

This proposal is based on prices now in effect. Our quotation will be protected for 2 days. It is also subject to the August Winter & Sons Conditions of Proposal, a copy of which is available upon request.

August Winter & Sons, Inc. is a full-service design/build, mechanical contractor providing fabrication and/or installation of specialty items such as piping, plumbing, HVAC systems and custom tanks. We appreciate the opportunity of quoting this work. If you have any questions or further information is required, please feel free to contact us.

Sincerely,
AUGUST WINTER & SONS, INC.

Eric LeBlanc
eleblanc@augustwinter.com
Mobile: 920-422-0665
(wz)

HVAC * PLUMBING * TANK FABRICATION * PROCESS PIPING * IND. SHEETMETAL
SPECIALTY METAL FAB. * ASME PRESSURE VESSELS * ASME CODE WELDING * 24 HR. SERVICE * ENGINEERING
STATE OF WISCONSIN LICENSED MASTER PLUMBERS, LICENSE NUMBER 871958

Pete Hartz

From: Brandon Mancilla <Brandon@williamreidltd.com>
Sent: Monday, October 30, 2023 11:18 AM
To: Pete Hartz
Cc: Timothy Hayden; Lewin, Derek
Subject: RE: [EXTERNAL] RE: Launder Covers

Pete,

Our proposal does not include installation. We do have a service group, but this is out of our traditional scope. In an effort to better facilitate a more economical solution, I have copied Derke from August Winter on this email chain. He will be able to better assist you on that front.

Thanks!

Brandon Mancilla
Sales Engineer



PO Box 397
Germantown, WI 53022
Ph: 414-331-5576
brandon@williamreidltd.com

Check out our new website!
williamreidltd.com

Add \$120K for install costs.

+/- 2-3K for freight

\$207,500 installed

+ freight yet

From: Pete Hartz <phartz@watertownwi.gov>
Sent: Monday, October 30, 2023 9:47 AM
To: Brandon Mancilla <Brandon@williamreidltd.com>
Cc: Timothy Hayden <THayden@watertownwi.gov>
Subject: RE: [EXTERNAL] RE: ChemScan Phosphate Analyzer Info

Thanks Brandon – does that proposal include installation? We are looking to have those installed as part of the purchase, are you guys able to do the install or do you have a recommendation on a firm that does the install?

Pete

From: Brandon Mancilla <Brandon@williamreidltd.com>
Sent: Monday, October 30, 2023 9:36 AM
To: Pete Hartz <phartz@watertownwi.gov>
Cc: Timothy Hayden <THayden@watertownwi.gov>
Subject: RE: [EXTERNAL] RE: ChemScan Phosphate Analyzer Info

Good morning Pete,

Attached is your requested proposal. Is there anything else you need from me?

LONG DESCRIPTION QUOTATION FORM

To: Peter Hartz	From: Karl Szasz
Company: City of Watertown	Email: kszasz@protectolite.com
Email: phartz@cityofwatertown.org	Your Reference: Brandon Mancilla
Phone: (920) 262-4085	Our Reference: 23-119
Fax: (920) 262-4087	Date: October 30, 2023
Re: Watertown WI - Launder Covers	Closing:

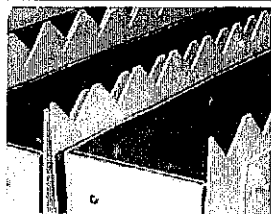
We are pleased to provide Protectolite Composites Inc's **Scope of Supply and Price** for the FRP launder covers for the below equipment. Scope is based on our review of the drawings and site photos

- 2 Tanks 90' DIA

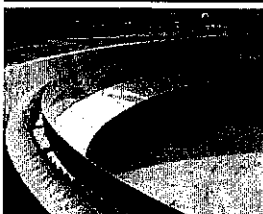
Protectolite™ FRP wastewater components for the clarification process are modular in design; they are made of Protectolite FRP composite and are suitable for outdoor exposure in wastewater environments. They have been installed all over North America from the deep south of El Paso, Texas to the near north of Ft. McMurray, Alberta; for over 20+ years, Protectolite™'s FRP wastewater products have met the tough requirements of the wastewater environment.

- *All Protectolite™ FRP components are matched-die-molded, precision made, under high heat & pressure.*
- *All FRP components are designed and manufactured by Protectolite™.*

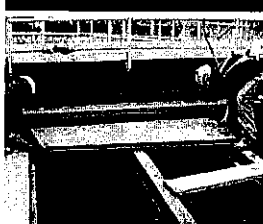
Weirs, baffles and troughs



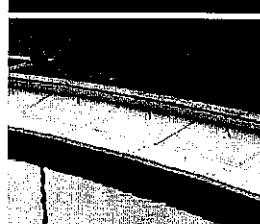
Density current baffles



Pro'Deck Covers



Launder Covers



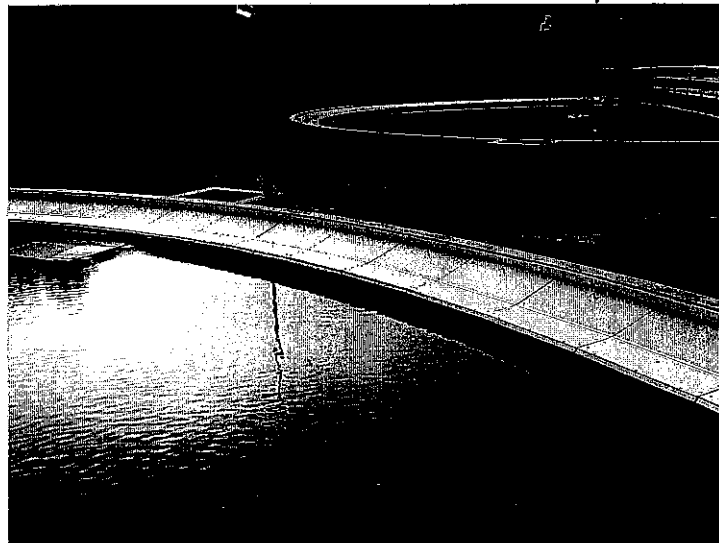
Protectolite FRP Launder Covers are modular in design; they are made of Protectolite FRP composite and are suitable for outdoor exposure in wastewater environments.

- Launder Covers are made of 1/4" thick gray Protectolite™ FRP including compression molded FRP support brackets
- Covers are approximately 48''x 25''
- Assembly & wedge anchor hardware in 316SS
- Launder Covers will open to the center.
- There will be 1 FRP support post per cover
- All items are factory assembled and drilled for easy site assembly. Only the outer perimeter support will require field drilling in accordance with concrete rebar.

CUSTOMER: William Reid			
PROJECT NAME: Watertown		LAUNDER COVER	
PINC: 23-119		Two (2) tanks 90 ft	
Launder Cover			
Item #	Name		QTYs
1	HINGED COVER PANEL TYPE A,25.54"x48X1/4	ISOPHTHALIC POLYESTER UV GREY	74
2	HINGED COVER PANEL TYPE B,25.54X48X1/4	ISOPHTHALIC POLYESTER UV GREY	74
3	FIXED COVER PANEL 15.8X45.5"x1/4	ISOPHTHALIC POLYESTER UV GREY	148
9	L-ANGLE FOR SUPPORT POST 4X6X1/2", 3.5" LG	ISOPHTHALIC POLYESTER UV GREY	148
11	OUTER PERIMETER ANGLE,4.5x4.5x1/4", 75 Degree, 72" LENGTH	ISOPHTHALIC POLYESTER UV GREY	98

Pricing for 2 tanks 90' DIA approx. 565' lineal ft: \$87,000.00 + Freight \$2,000.00 x 1

each ↑ x 2 = \$174,000



Included in all the above items:

- All factory cuts are sealed before shipping.
- Shop Drawings.
- 1 gallon of edge sealer in case of field cuts.
- Installation & Maintenance Manual.
- Hardware in 316SS.

Extras.

- **P.E. WI Stamp - \$2,500.00**
- Confirmation of site measurements.
- Caulking.
- Assembly, storage & handling, and installation at site.

Freight costs: \$2,000.00.

- *Freight is quoted based on daily rates and is subject to change based on real market prices at week of shipment.*

Delivery/lead times:

- Shop drawings will be prepared 2-4 weeks of receipt of the purchase order and confirmation/receipt of site drawings c/w all the tank dimensions.
- The delivery of the product will be 4-6 weeks from approved drawings.
- Delivery & shipping details can be finalized at time of order.

Terms:

- FOB Protectolite Composites Inc.
- 25% deposit with submission of shop drawings.
- Net 30 days from date of shipment, subject to credit approval.
- Taxes are extra, if applicable

Quotation is valid for 30 days from date of issue.

We look forward to working with you on this WWTP project.

Yours truly,
Protectolite Composites Inc.
Karl Szasz
President

Fulfillment of Contract:

This quotation covers reinforced plastic parts only, unless otherwise stated in this quotation or in amendments pertaining to same.

The acceptance by the Buyer of these terms and conditions of sale including the express limitations of liability of Protectolite Composite Inc. contained herein in lieu of all other warranties, conditions or provisions, are conditions precedent to Protectolite Composites Inc. effecting the sale and delivery of these goods to Buyer.

- **F.O.B: Protectolite Composites Inc. 84 Railside Rd. Toronto, Ontario. M3A 1A3**
- **All taxes and freight are extra. Net 30 days upon credit approval.**
- **Quotation is valid for 30 days from date of issue.**

Canadian Funds		Applicable duty/brokerage included	X
US Funds	X	Applicable duty/brokerage excluded	

Terms and Conditions of Sale

1). **Acceptance of Contract:** Buyer's acknowledgement of or acceptance of goods under this contract (hereinafter referred to as the "Goods") shall constitute Buyer's acceptance of the terms and conditions herein. This contract contains the complete agreement between Buyer and Protectolite Composites Inc. (hereinafter referred to as ("Seller")) with respect to the Goods. Acceptance of this contract may be made only on the terms and conditions set forth herein. Any proposed changes or additions to this contract by Buyer are objected to and hereby rejected, unless otherwise expressly agreed to in writing by the Seller.

2). **Acceptance of Goods:** Buyer shall inspect all the Goods furnished hereunder immediately upon receipt. Use of materials or failure to make claims for refunds or allowances wherein 30 days from date of shipment shall constitute acceptance of the Goods sold hereunder and a waiver by Buyer of any claim with respect hereto.

3). **Fulfillment of Contract:** Buyer and Seller agree that the quantity of Goods manufactured by compression moulding techniques delivered hereunder may vary by 10%, more or less, from the quantity of goods ordered and will be paid for pro rata.

4). **Cancellations:** Contracts shall not be cancelled, altered or increased by Buyer except upon written approval by Seller and upon payment by Buyer to Seller of any cancellation charges including actual costs incurred by Seller and 10% of the contract price as liquidated damages and not as penalty.

5). **Returns:** Buyer may not return Goods subject to revision without first obtaining the consent of the Seller and all costs associated therewith shall be borne by the Buyer.

6). **Prices:** Prices quoted for Goods are subject to revision without prior notice to Buyer. Prices for Goods shall be the price in effect at the date of shipment. Prices shall be payable in the currency quoted.

7). **Shipments:** All shipments are at the Buyer's expense and risk as detailed on the face of this quotation. Shipments shall be made by a carrier selected by Seller, unless otherwise specified by Buyer in writing. Claims for damage or loss in transit must be made directly to the carrier.

8). **Risks of Loss and Title:** Risk of loss for all Goods sold hereunder shall pass to Buyer upon Seller's delivery to a carrier at Seller's facilities. Title to the Goods shall not pass to the Buyer until payment has been made in full, notwithstanding that the risk or loss has already passed and delivery has been made. Such reservation of title shall constitute the grant by the Buyer to the Seller of a purchase-money security interest, which interest shall attach to the Goods and the proceeds thereof upon the shipment of the Goods to the Buyer.

9). **Non-Shipment Delay:** No liability is assumed for non-shipment or delays. The Seller reserves the right to cancel any order if it finds it impossible to produce or deliver the goods within a reasonable length of time. The Buyer agrees that the Seller shall have no responsibility under or arising out of this contract in the event of notice of cancellation being given by the Seller.

10). **Warranty:**

A. (i) Except as provided in paragraph B hereunder, Seller's sole warranty is that the Goods to be supplied hereunder shall be free and clear from defects in material and workmanship for a period of one year from the date of Seller's shipment of Goods hereunder to Buyer. If any of the Goods furnished by Seller hereunder are defective within the warranty period, Seller's sole obligation shall be, at its option, to repair or replace, (but not to install), the Goods without cost to the Buyer, unless such defect is due to Buyer's misuse, abuse or neglect of such Goods or such Goods have been altered or repaired other than by Seller, in which case the warranty hereunder shall be void.

(ii) No claim will be allowed or be valid under this warranty unless Buyer notifies Seller of such claim in writing within 30 days after Buyer learns of facts giving rise to such claim. All of Seller's liabilities, if any, with respect to the Goods cease at that time, and no action for breach of Seller's warranties and duties based on actions occurring after such time may be brought. Buyer's failure to test, inspect and make a claim within such period shall be conclusive evidence that the Goods shipped were satisfactory in all respects and shall constitute a waiver of any such claim.

B. (i) Seller does not warrant that use of Goods will achieve any particular result. Seller's sole obligations and Buyer's sole remedies shall be stated as above.

THE FOREGOING WARRANTIES ARE IN LIEU OF ALL OTHER WARRANTIES WHETHER EXPRESS, IMPLIED OR STATUTORY INCLUDING ANY WARRANTY OF MERCHANTABILITY, FITNESS, OR FITNESS FOR A PARTICULAR PURPOSE.

Terms and Conditions of Sale Continued

11). **Liability:** Seller's liability for any loss, cost or damage to Buyer or any other person, whether based on warranty, contract, negligence, product liability, or otherwise, arising in connection with the sale or use of the Goods is limited to the price of the Goods. In no event shall Seller be liable for any incidental or consequential loss, cost or damage to Buyer or any other person (including, but not limited to, losses, expense, or damages due to Buyer's or its customer's requirements, lost profits, injury or death of any individual, or damage to or loss of any property). Whether based on warranty, contract, negligence, product liability, or otherwise, arising in connection with the sale or use of the Goods.

12). **Indemnity:**

(A) Buyer agrees to and shall hold harmless Seller, its officers, directors and employees from any loss, liability or expense whatsoever, from fire, personal injury, theft, death, property damage, product liability, patent, trademark or copyright infringement or otherwise, arising out of any act or omission or negligence of the Buyer, its agents or representatives.

(B) BUYER WILL INDEMNIFY SELLER AGAINST AND HOLD IT HARMLESS AND DEFEND IT FROM ALL LIABILITY FOR DAMAGES, LOSSES, AND EXPENSES OF EVERY NATURE AND KIND, AND WITHOUT LIMITING THE GENERALITY OF THE FOREGOING, DIRECT, SPECIAL, INDIRECT, CONSEQUENTIAL AND INCIDENTAL DAMAGES INCLUDING DAMAGES RELATED TO LOST SALES AND PROFITS, EXCESSIVE OR INCREASED COSTS, AND EXPENSES OF FIELD RECALL AND RETROFIT COSTS AND EXPENSES, DOWNTIME COSTS, AND CLAIMS OF CUSTOMERS OR BUYERS FOR DAMAGES, TO PERSONS OR PROPERTY IN ANY MANNER ARISING OUT OF OR INCIDENTAL TO, THE PERFORMANCE OF THE GOODS TO BE SUPPLIED HEREUNDER. Subject to the extent of the liability limitations set forth in paragraph 10 and 11 above the foregoing indemnity and hold harmless provision shall apply and extend to claims of every nature and kind, whether asserted in a lawsuit or otherwise instituted against Seller by Buyer or by any other persons, including claims based upon negligence, breach of contract, breach of warranty, strict liability, or any other legal theory upon which liability may be asserted against Seller by Buyer or by any other person.

13). **Credit Approval:** Orders are subject to approval by Seller's Credit Department. Seller reserves the right to extend, refuse or withdraw credit at any time without notice, and to request guarantees, security agreements, or payment in advance. Seller reserves the right to demand from Buyer in writing adequate assurance that Buyer will perform its obligations under this agreement if reasonable grounds for insecurity arise. Seller reserves the right to revoke credit already extended, to reject any orders placed by Buyer, and to demand full payment in advance for any accepted orders, if Seller reasonably believes Buyer's credit standing to be unsatisfactory.

14). **Payment:** Terms are net 30 days from the date on the Seller's invoice, unless otherwise stated in writing.

15). **Late Payment:** Seller shall be entitled to charge interest on any amounts not timely paid by Buyer at the rate of twenty four percent (24%) per annum. In the event Seller brings suit to collect any amount to which it is entitled to hereunder, Buyer shall pay Seller all attorney's fees, expenses and costs incurred by Seller in collecting such amounts.

16). **Miscellaneous:** The rights and remedies of Seller hereunder shall be cumulative and in addition to all Seller's other rights in law or equity. The invalidity of any one clause or part of this contract shall have no effect on the validity of any other such claims or part thereof.

17). **Language of Agreement:** The parties acknowledge their agreement that this contract, as well as all related documents, be drawn up in the English language only.

18). **Taxes, etc.:** Unless otherwise specifically stated, Seller's prices do not include excise, sales whether federal or state, use, duty or similar taxes. Consequently, where not otherwise specifically stated, in addition to the prices specified herein, the amount of any present or future excise, sales, use, duty or similar tax applicable to the sale of goods hereunder shall be paid by the Buyer or, at Seller's option, Seller may pay the said tax or charge and add an amount equal to such tax or charged paid or payable by Seller to the price goods herein.

19). Moulds and Tooling: Moulds and tooling are quoted in accordance with the standards and practices of Plastic Custom Moulders as published by the Society of the Plastics industry of Canada.

PROTECTOLITE™ COMPOSITES INC.