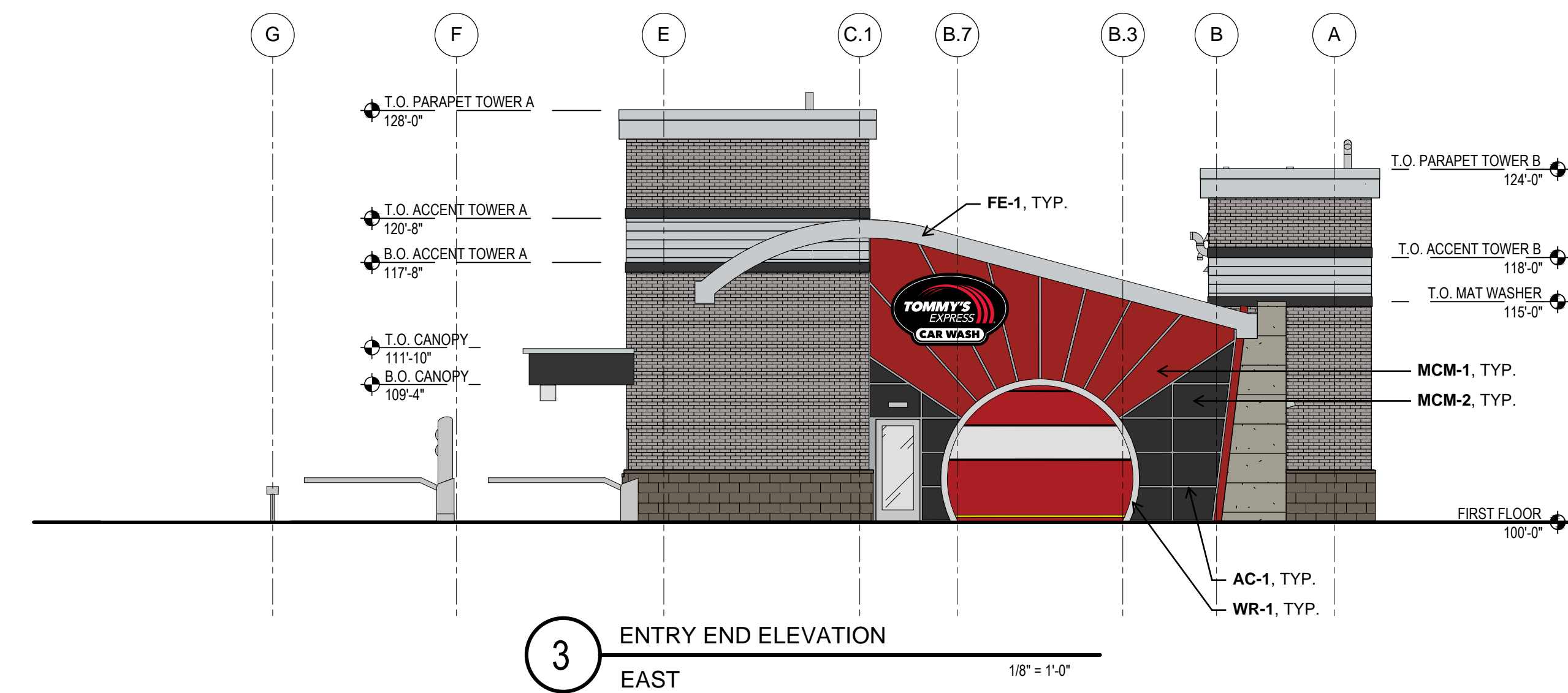
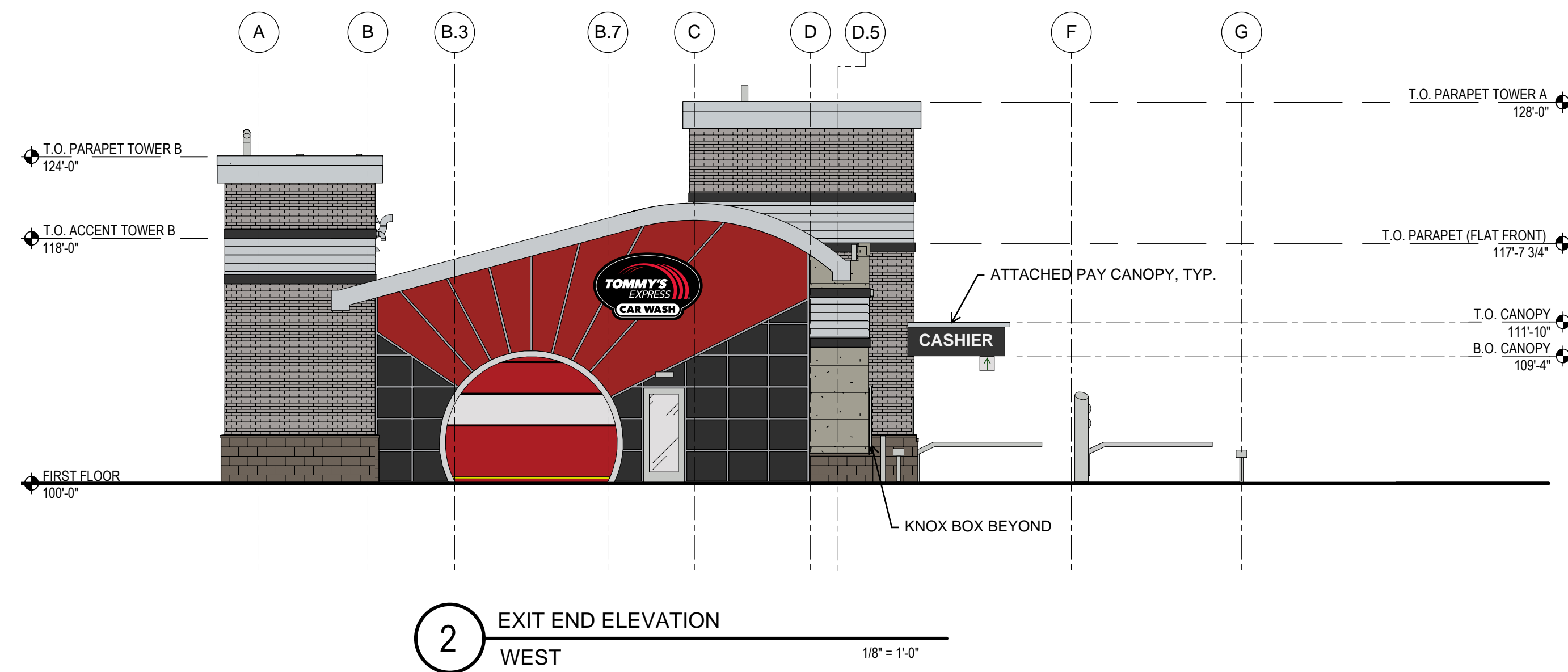


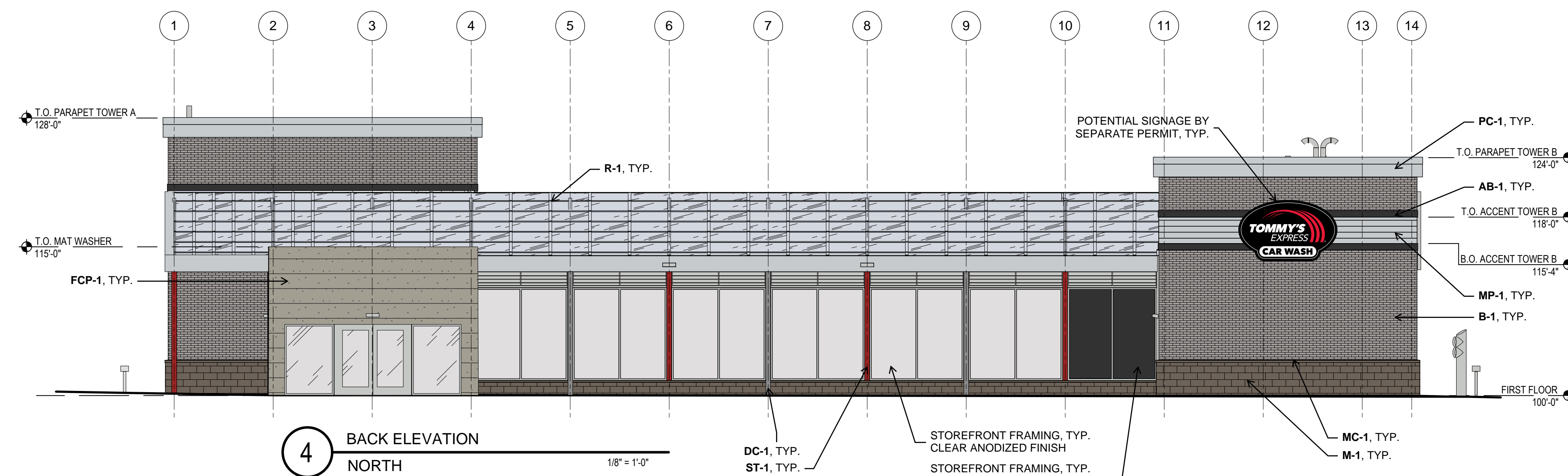
**PERCENTAGES BY EXTERIOR MATERIAL**

BACK ELEVATION			ENTRY END ELEVATION		
MATERIAL	% COVERAGE	AREA (SF)	MATERIAL	% COVERAGE	AREA (SF)
METAL	25%	565	METAL	50%	547
MASONRY	42%	956	MASONRY	41%	529
GLAZING	33%	759	GLAZING	2%	21
			VINYL (GARAGE DOORS)	8%	97
<b>TOTAL</b>	<b>100%</b>	<b>2,290</b>	<b>TOTAL</b>	<b>100%</b>	<b>1,294</b>
FRONT ELEVATION			EXIT END ELEVATION		
MATERIAL	% COVERAGE	AREA (SF)	MATERIAL	% COVERAGE	AREA (SF)
METAL	31%	796	METAL	61%	794
MASONRY	49%	1,249	MASONRY	30%	383
GLAZING	19%	487	GLAZING	2%	21
			VINYL (GARAGE DOORS)	8%	97
<b>TOTAL</b>	<b>100%</b>	<b>2,533</b>	<b>TOTAL</b>	<b>100%</b>	<b>1,295</b>

(ROOF NOT INCLUDED IN AREA CALCULATIONS)



TAG	MATERIAL	MFR.	DESCRIPTION	MFR. COLOR
ST-1	STRUCTURAL STEEL	PROSPRIANT	5-STAGE POWDER COATED	RAL 3001
MP-1	PREFINISHED PROFILED MCM, TOWER BANDING	ATAS	BELVEDERE 7.2\" RIB PANEL	SILVERSMITH
B-1	BRICK, MAIN BUILDING FINISH	GLEN-GARY	GLAZED BRICK, KLAYCOAT	STONE GREY
M-1	CMU BLOCK	CONSUMERS	4\" SPLIT FACE VENEER	ASH (MORTAR COLOR TO MATCH)
MC-1	PRECAST STONE		MASONRY CAP	TO MATCH M-1
FCP-1	FIBER CEMENT PANEL	NICHIHA	AWP1818 - ARCH. BLOCK, MODERN SERIES	GRAY
AB-1	PREFINISHED MCM, TOWER BANDING	ATAS	FLAT SHEET AND COIL	BLACK
PC-1	PREFINISHED MCM, TOWER FASCIA	ARCONIC	REYNOBOND COMPOSITE PANEL	BRIGHT SILVER METALLIC
MCM-1	PREFINISHED MCM, END WALLS	CITADEL	SINOCORE	MATCH RAL 3001
MCM-2	PREFINISHED MCM, END WALLS	CITADEL	SINOCORE	EBONY
AC-1	PREFINISHED MCM, END WALL REVEALS	TUBELITE	200 SERIES CURTAINWALL	CLEAR ANODIZED
DC-1	PREFINISHED MCM, DOWNSPOUT COVERS	ALPOLIC	4MM PE CORE	TBX METALLIC SILVER
WR-1	PREFINISHED MCM, GARAGE DOOR WRAPS	CITADEL	ENVELOPE 2000 SYSTEM	CLEAR SATIN ANODIZED
FE-1	PREFINISHED MCM, ROOF FASCIA	ALPOLIC	4MM PE CORE	TBX METALLIC SILVER
R-1	ACRYLIC ROOF SYSTEM	ACRYLITE	HEATSTOP HIGH IMPACT MULTI-SKIN	WZ011 - COOL BLUE WHITE



CONFIDENTIAL WARNING: THIS SHEET CONTAINS AND CONSTITUTES CONFIDENTIAL INFORMATION, IMAGES, AND TRADE SECRETS OF TOMMY CAR WASH SYSTEMS. ANY UNAUTHORIZED USE OR PORTION THEREOF IS STRICTLY PROHIBITED. THIS WORK IS THE EXCLUSIVE PROPERTY OF TOMMY CAR WASH SYSTEMS. ALL RIGHTS RESERVED.

REVISION SCHEDULE

VERSION	DATE	DESCRIPTION
1.0 B2	03/02/26	



TOMMY'S EXPRESS CAR WASH EXTERIOR ELEVATIONS  
**P4845 1727 S Church St. Watertown, WI**

**NOT FOR CONSTRUCTION FOR REFERENCE ONLY**

**A200**  
 01/01/2026  
 1/8\"/>