



7-Day Weather Hazards

10:30 AM EST
Monday, January 6, 2025

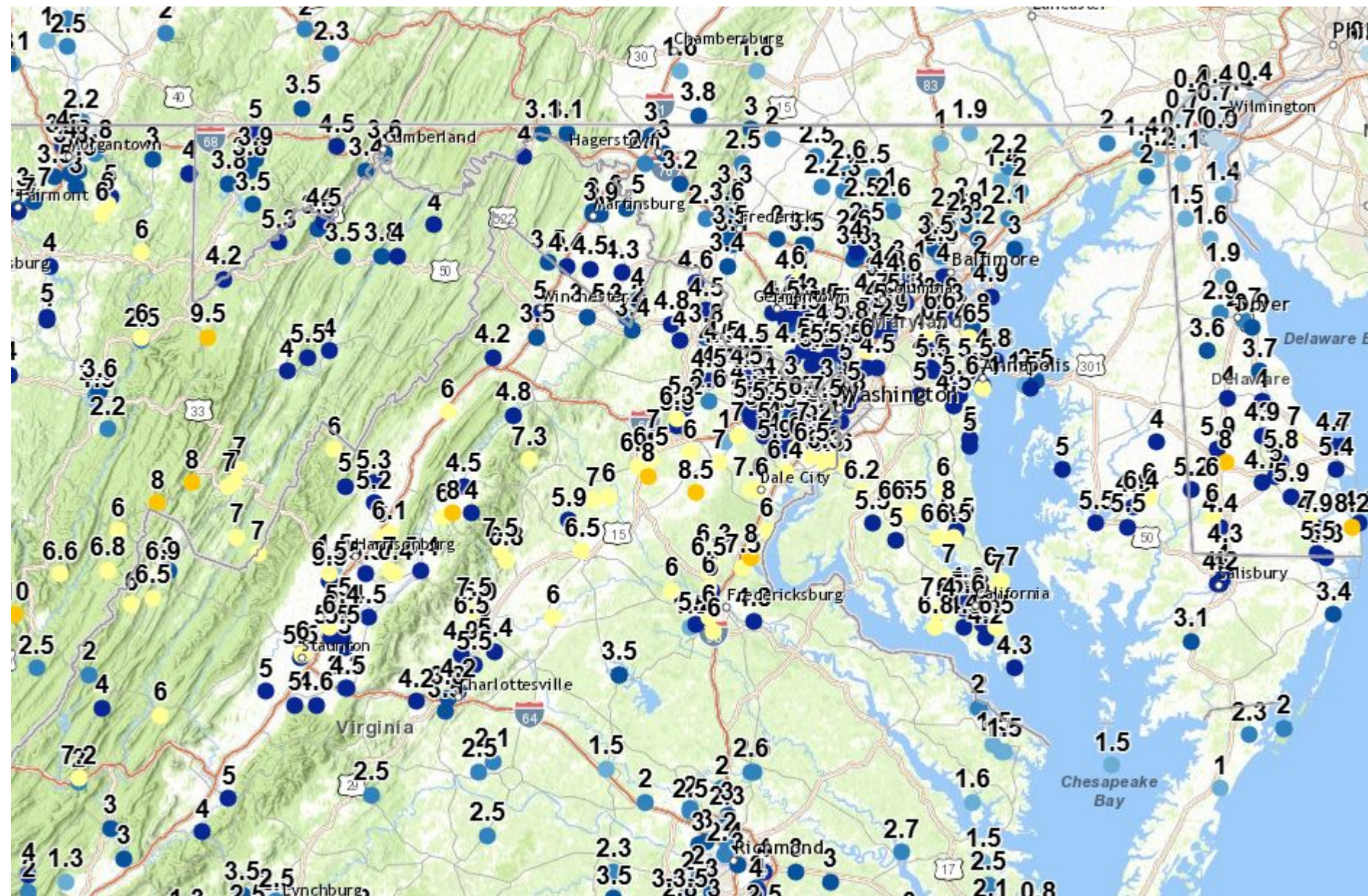
Prepared By WFO Baltimore/Washington





Observed Snow Through 10 AM

January 6, 2025
10:30 AM



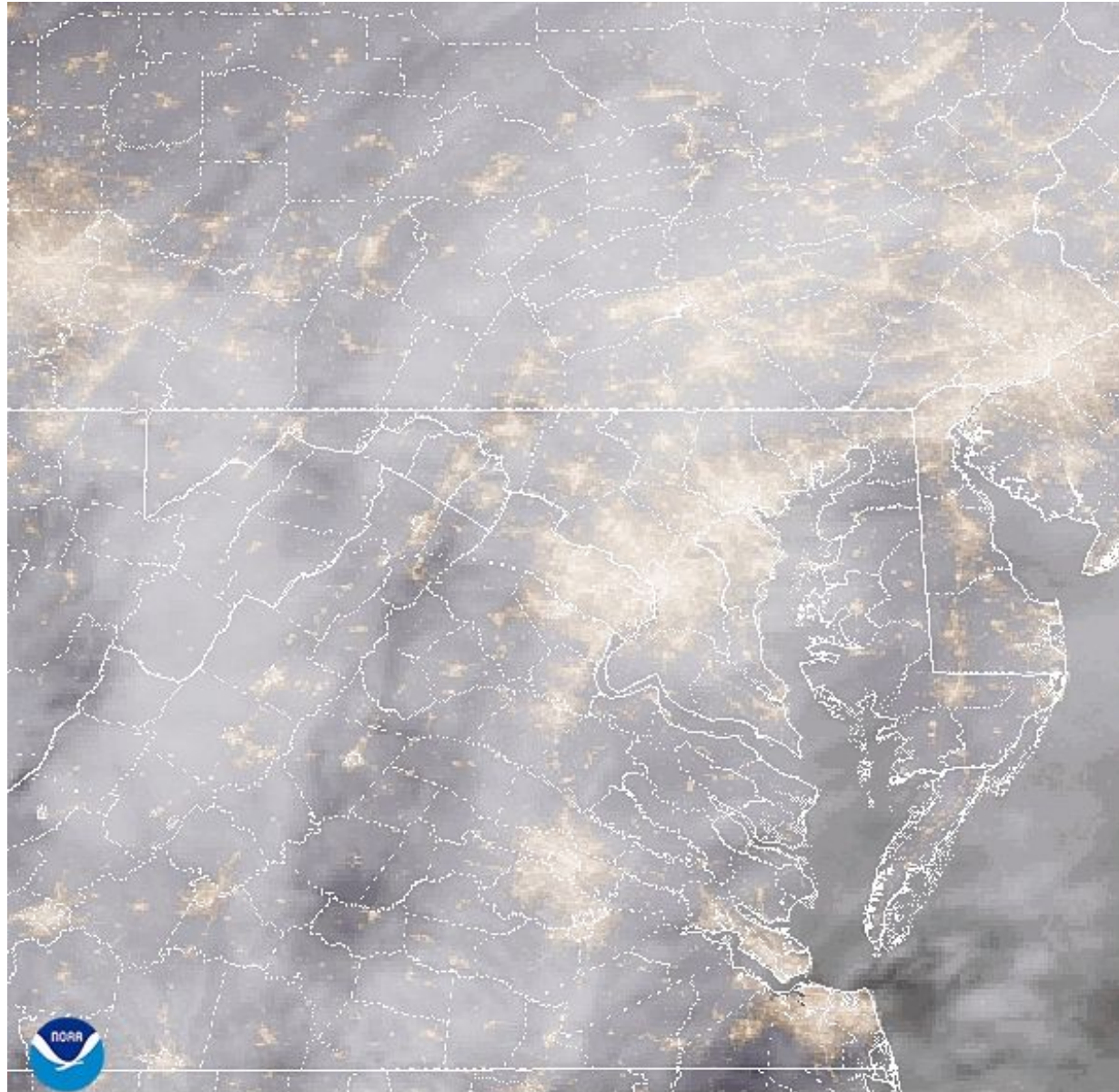
- Snow amounts through this morning:
 - 6-8" from Highland County to Eastern Shore
 - 4-6" in DC Metro
 - 2-4" in Baltimore Metro
- Some mixing of sleet is ongoing, mostly along/south of I-66
- A lull in snow is expected this afternoon for most, before additional snow returns late afternoon



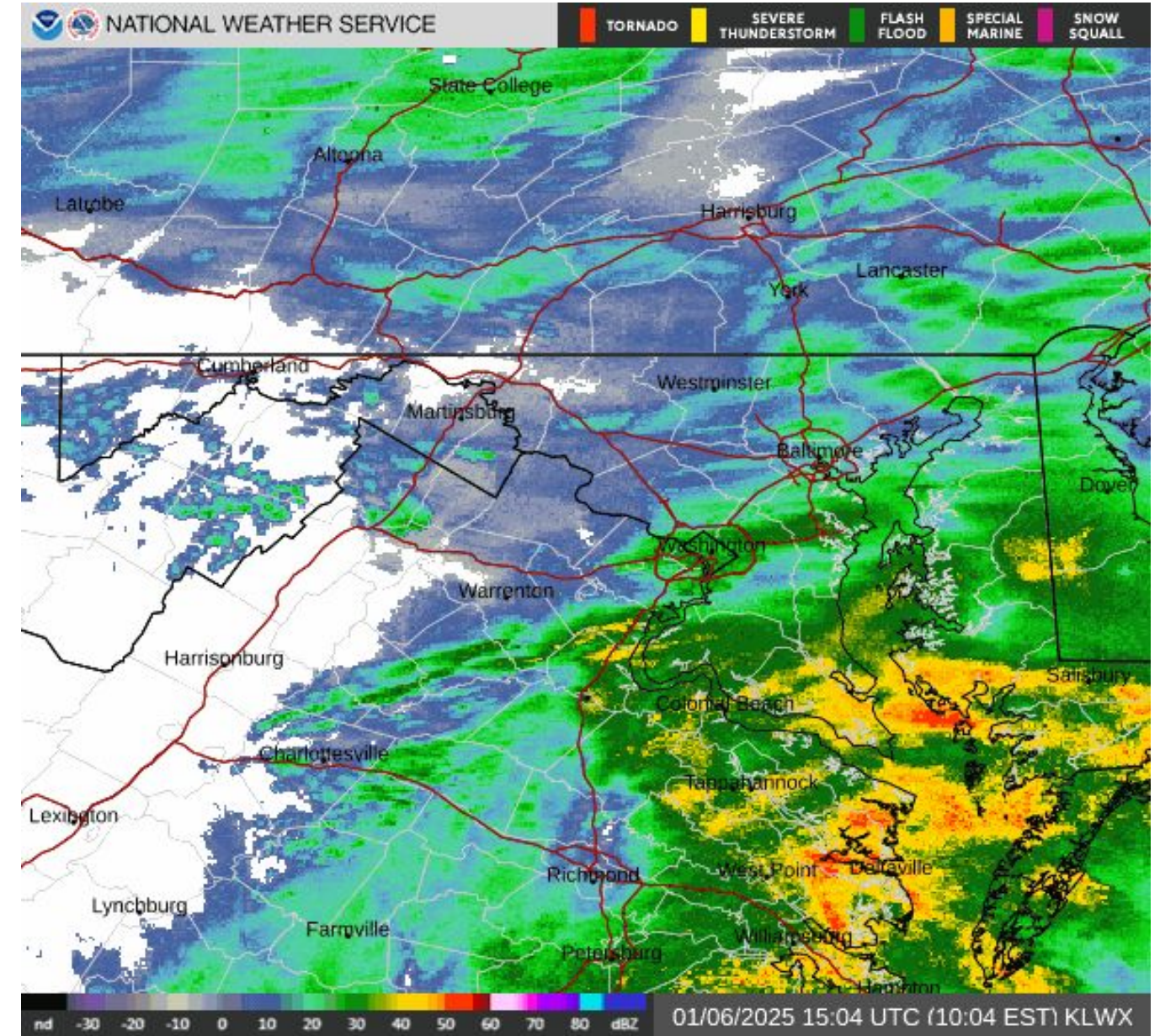


Current Satellite & Radar Imagery

January 6, 2025
10:30 AM



06 Jan 2025 11:00Z - NOAA/NESDIS/STAR - LWX - GEOCOLOR Composite



01/06/2025 15:04 UTC (10:04 EST) KLWX



National Oceanic and
Atmospheric Administration

U.S. Department of Commerce

National Weather Service
Baltimore/Washington

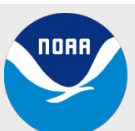


7-Day Weather Hazards

January 6, 2025
10:30 AM

Overview for the next 7 days

- **Today through Tonight**
 - **Winter Storm Warning** remains in effect across the area. Additional accumulating wintry precipitation is expected through tonight.
 - Gale Warning goes into effect this evening for lower tidal Potomac and much of the Chesapeake Bay.
- **Tuesday through Friday**
 - Dry and very cold conditions persist through the end of the week.
 - Snow on the ground will not quickly melt as temps remain near or below freezing through Friday.
 - Wind chills in the single digits are likely each night, with as low as -10F in the Allegheny Mountains.
 - Coldest wind chills Wednesday night into Thursday morning.
 - Gale Warning continues for portions of the waters through Tuesday afternoon.
 - Another period of snow is likely Wednesday into Wednesday night along/west of Allegheny Front.
- **Friday Night into Saturday Night**
 - Slight winter storm threat. If threat materializes, may cause travel disruptions.

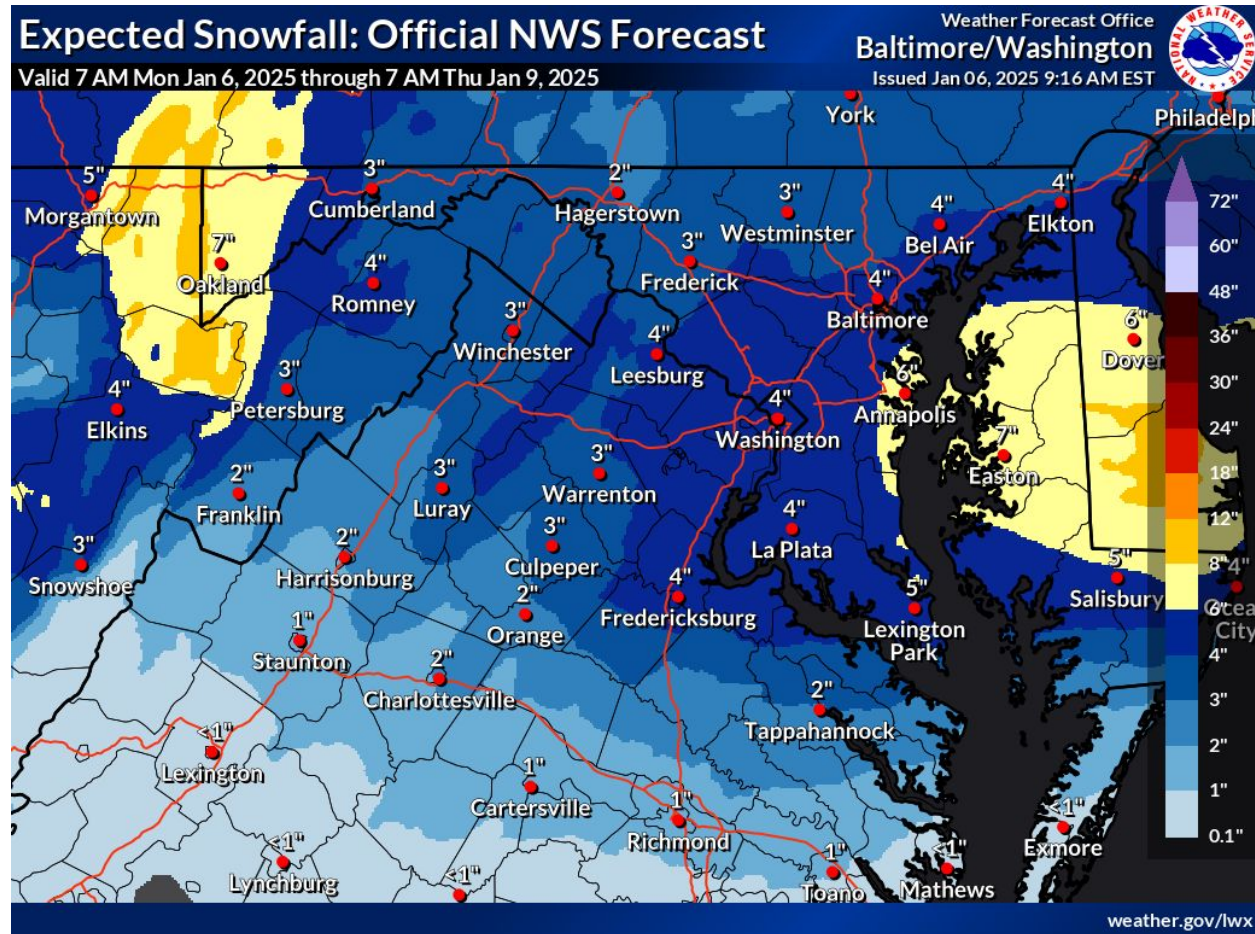




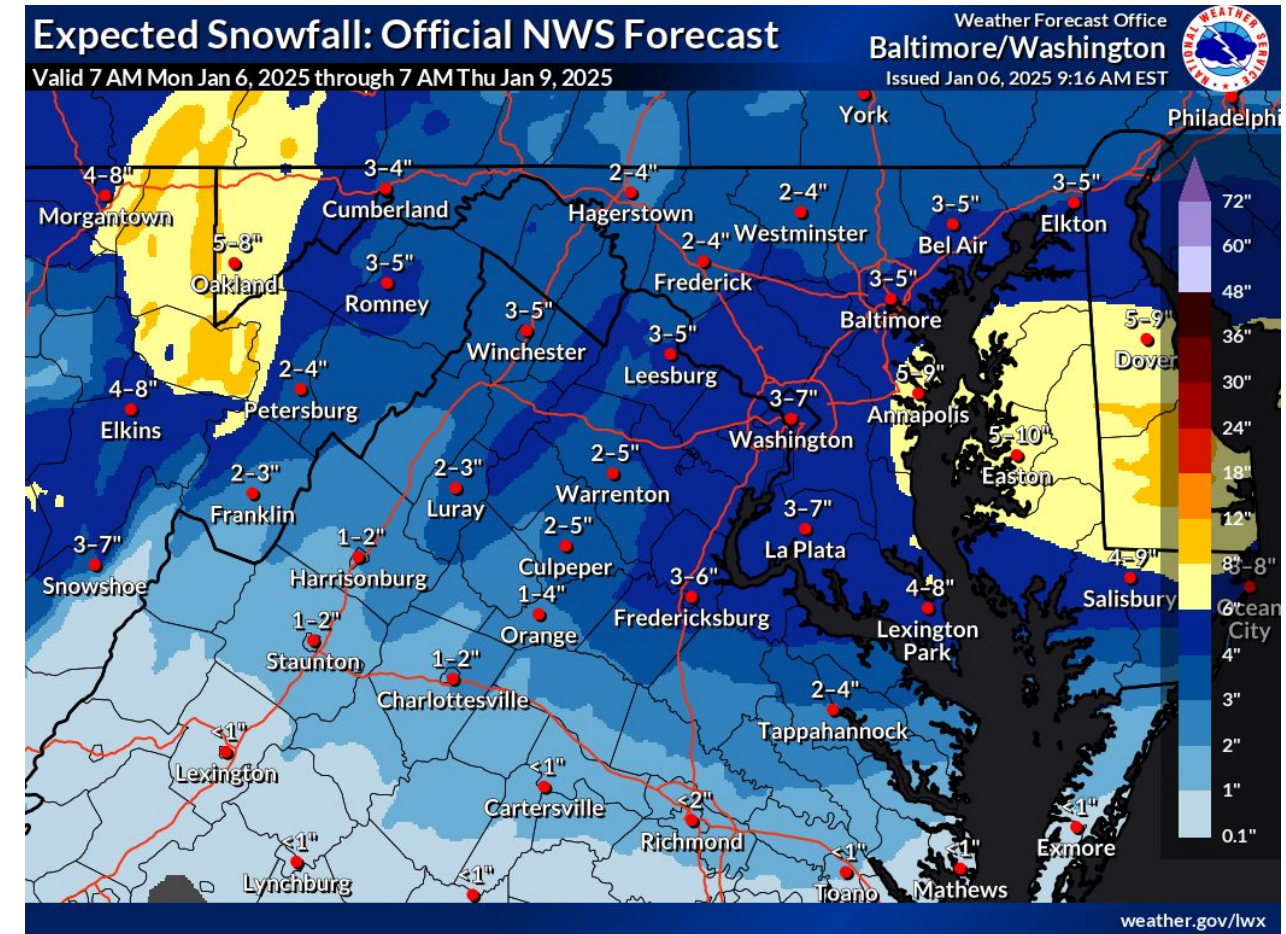
Additional Accumulating Snow

January 6, 2025
10:30 AM

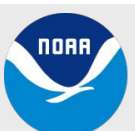
Through Tonight



- Additional 2-4" of accumulating snow is expected through late this evening.
- Steadiest snow is most likely from 4PM to midnight.



- Very localized higher amounts of 4-7" are possible if a heavier band of snow develops.
- This is most likely along/east of I-95, and in the Allegheny Mountains.

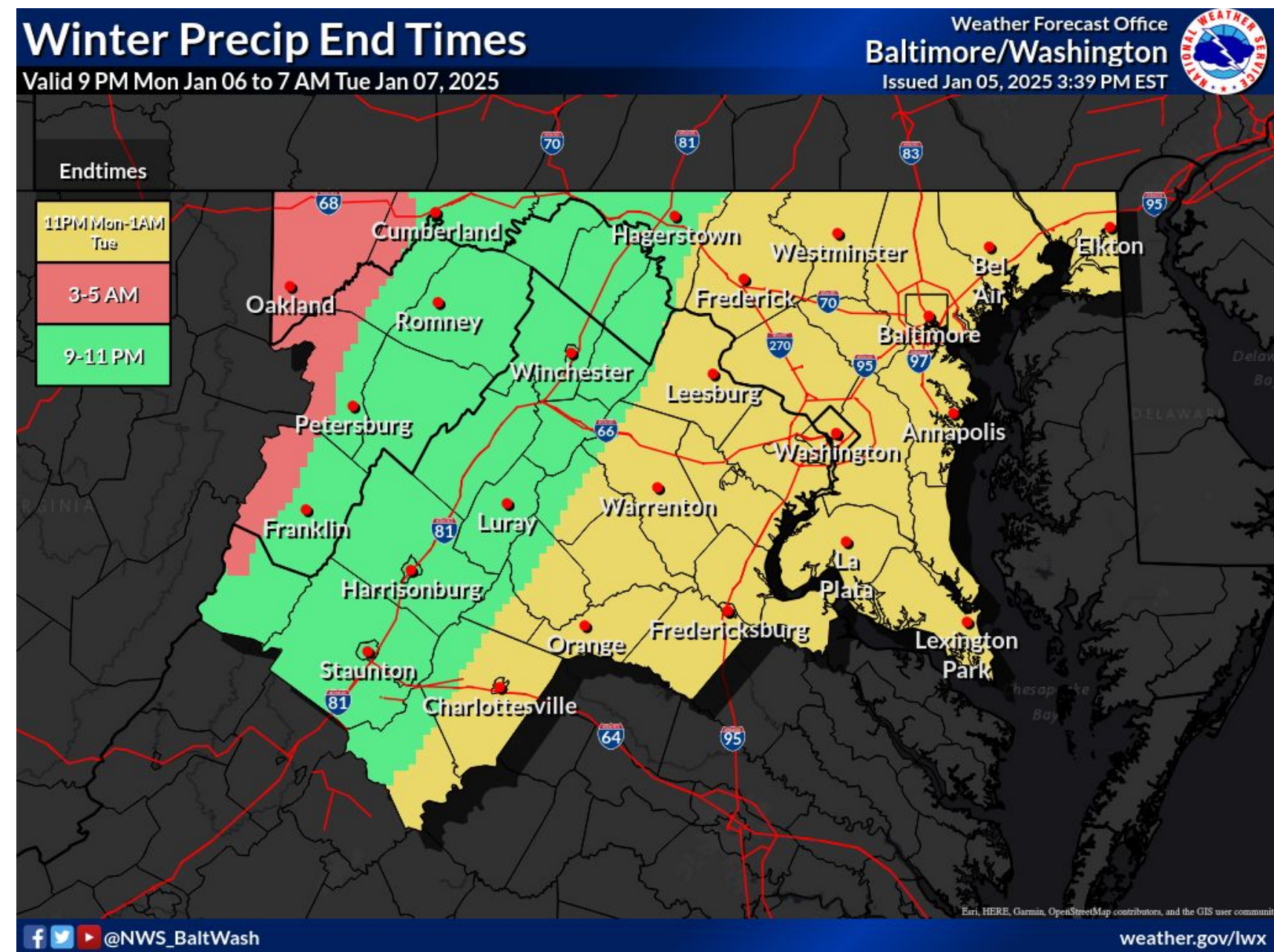




Winter Precip End Times

January 6, 2025
10:30 AM

Through Tonight



- Snow comes to an end from west to east late this evening, and ends in the mountains tonight.



National Oceanic and
Atmospheric Administration
U.S. Department of Commerce

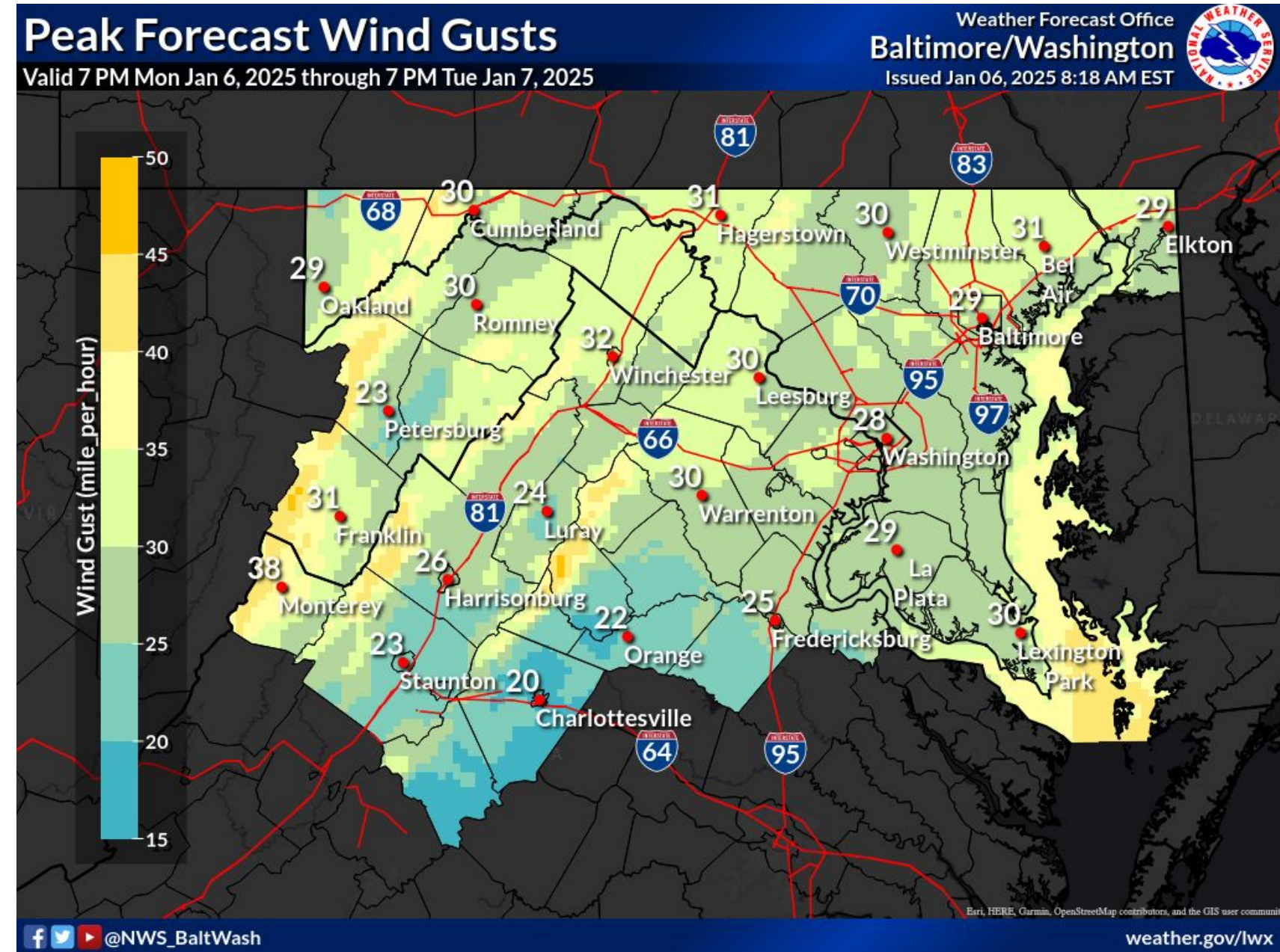
National Weather Service
Baltimore/Washington



Strong Winds Through Tuesday

January 6, 2025
10:30 AM

Tonight through Tuesday Afternoon



- Gusty winds are expected to develop tonight into Tuesday afternoon.
- Blowing and drifting snow is likely in the mountains and possible elsewhere.
- **Gale Warning in effect** for the lower tidal Potomac and much of the Chesapeake Bay this evening into Tuesday afternoon.



National Oceanic and
Atmospheric Administration
U.S. Department of Commerce

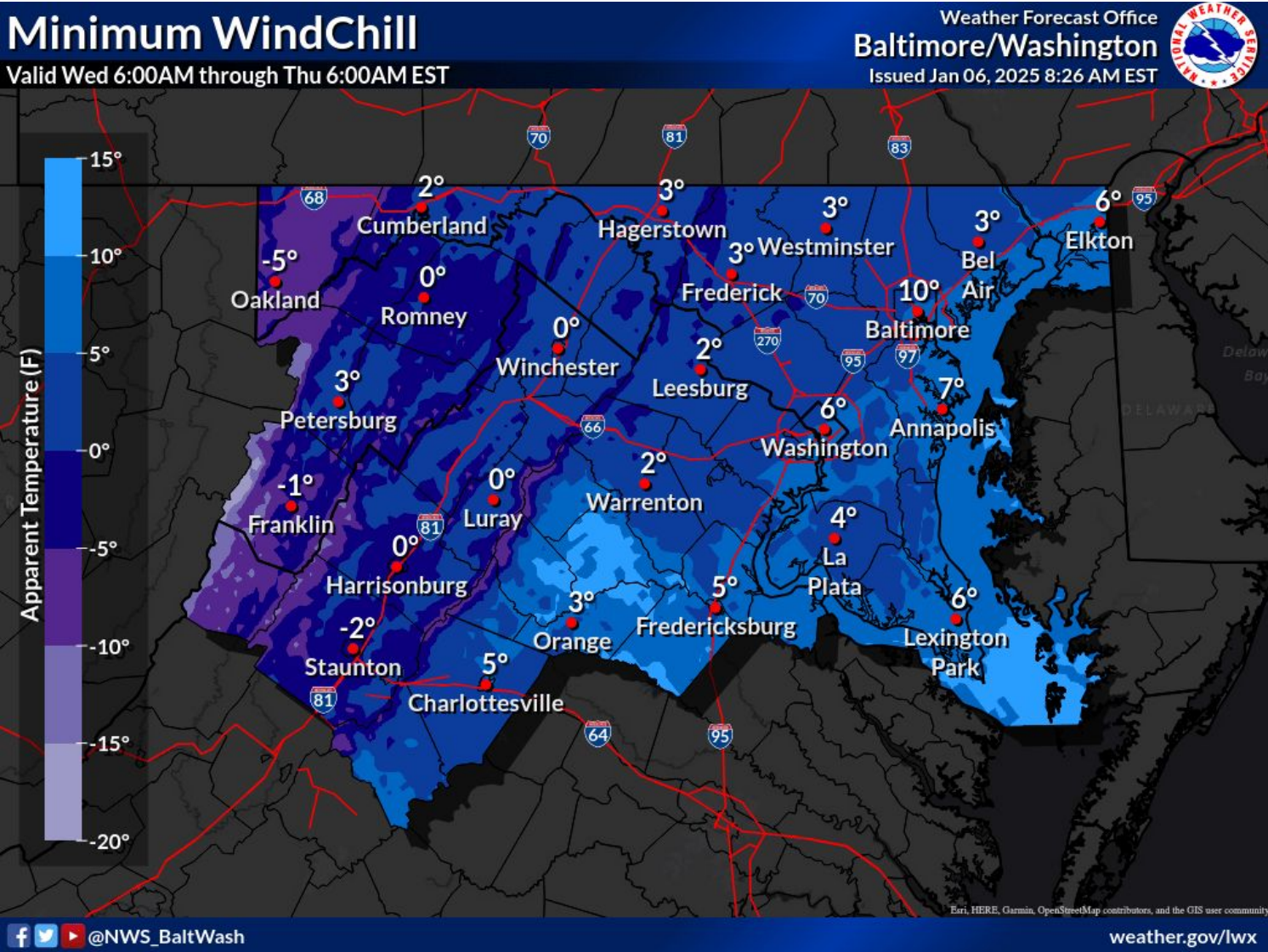
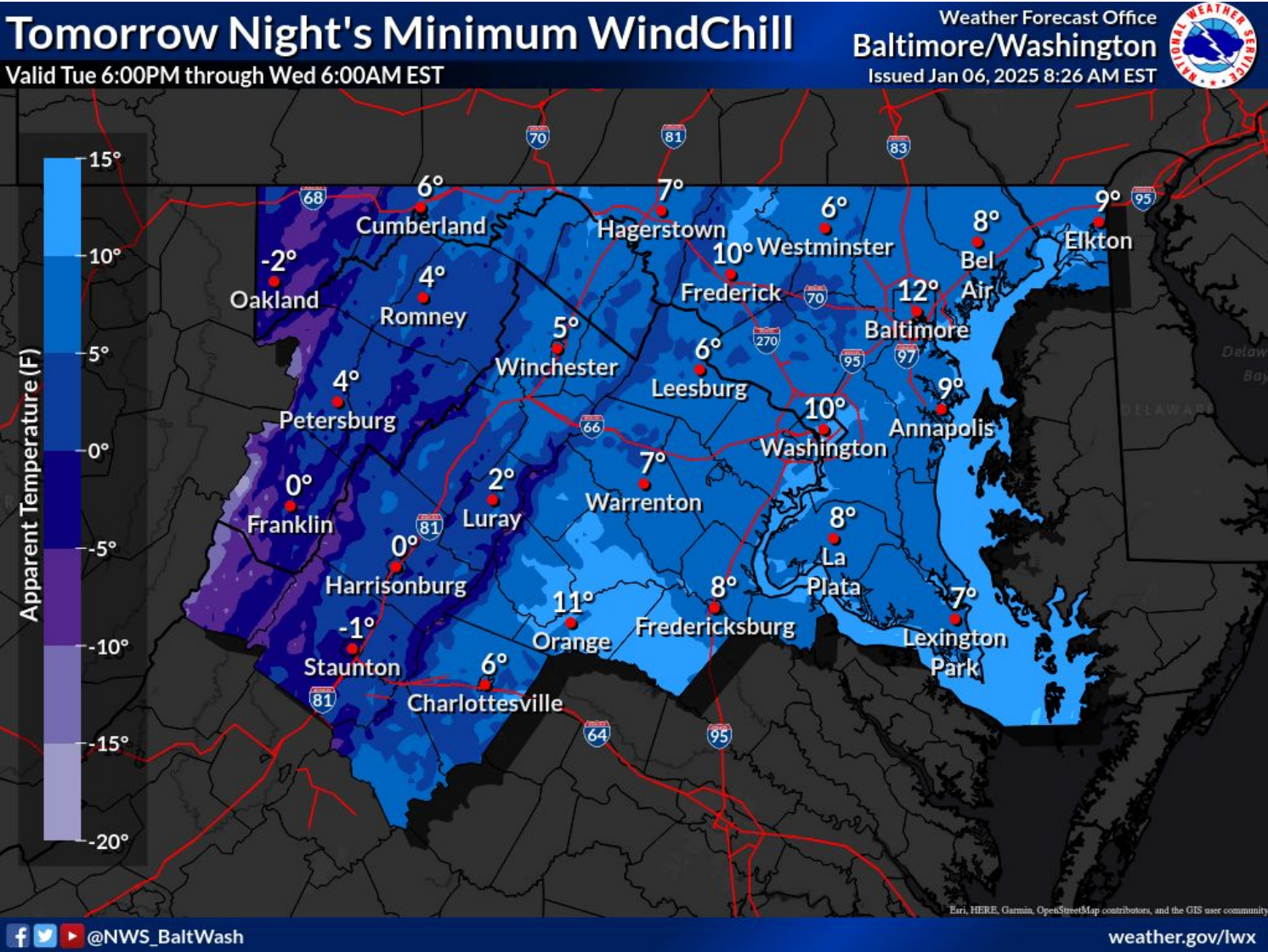
National Weather Service
Baltimore/Washington



Cold Conditions This Week

January 6, 2025
10:30 AM

Tuesday and Wednesday

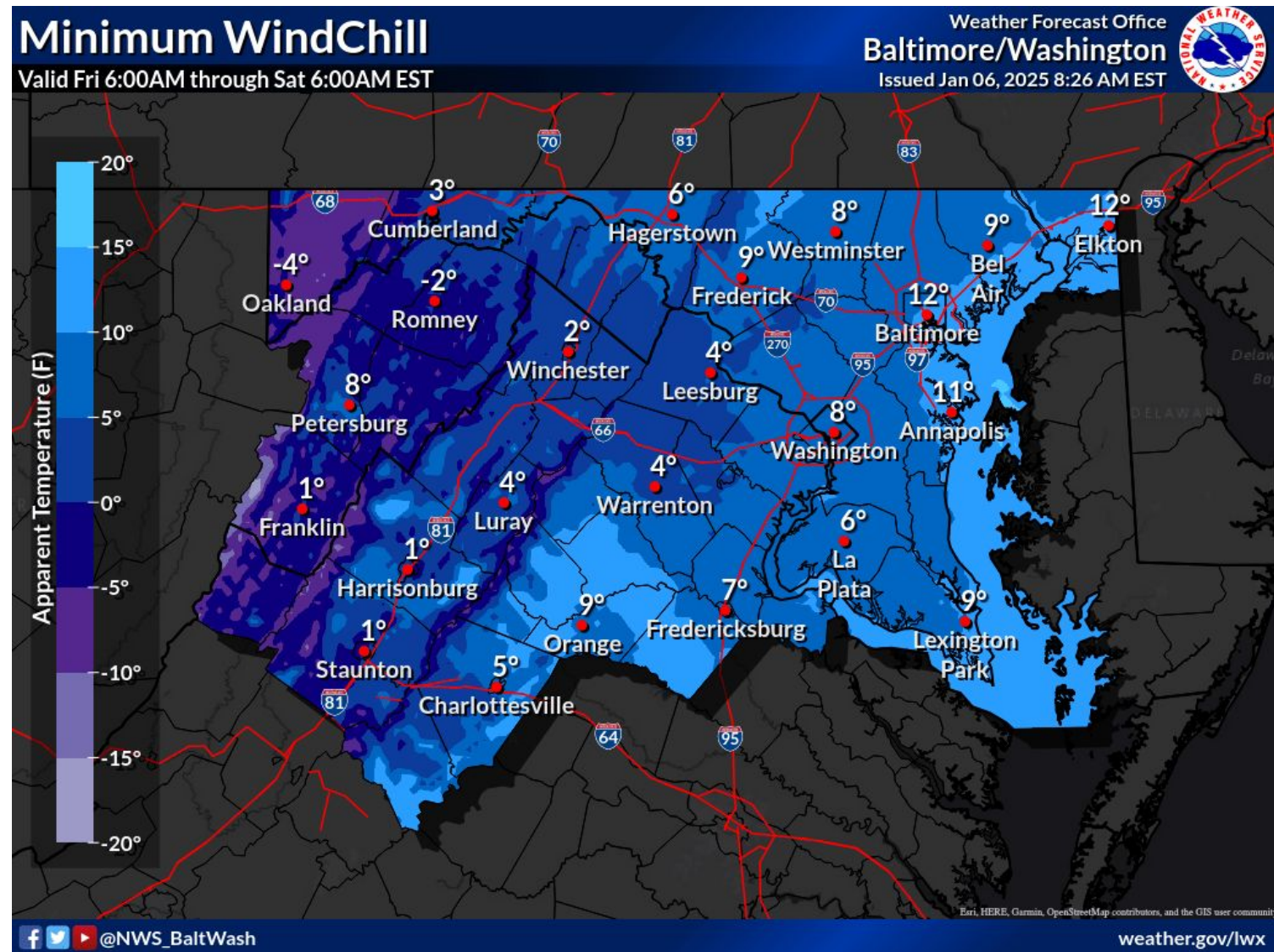


- Dry, very cold, and gusty conditions expected through the week.
- Wind chills drop to the single digits each night, and down to around -10F in the mountains.





Thursday and Friday



- **The coldest conditions Wednesday night into Thursday morning. Cold Weather Advisories may be needed for much of the area.**
- Snow on the ground will not melt significantly as temps remain near or below freezing through Friday.



National Weather Service Baltimore/Washington



Next Round of Mountain Snow

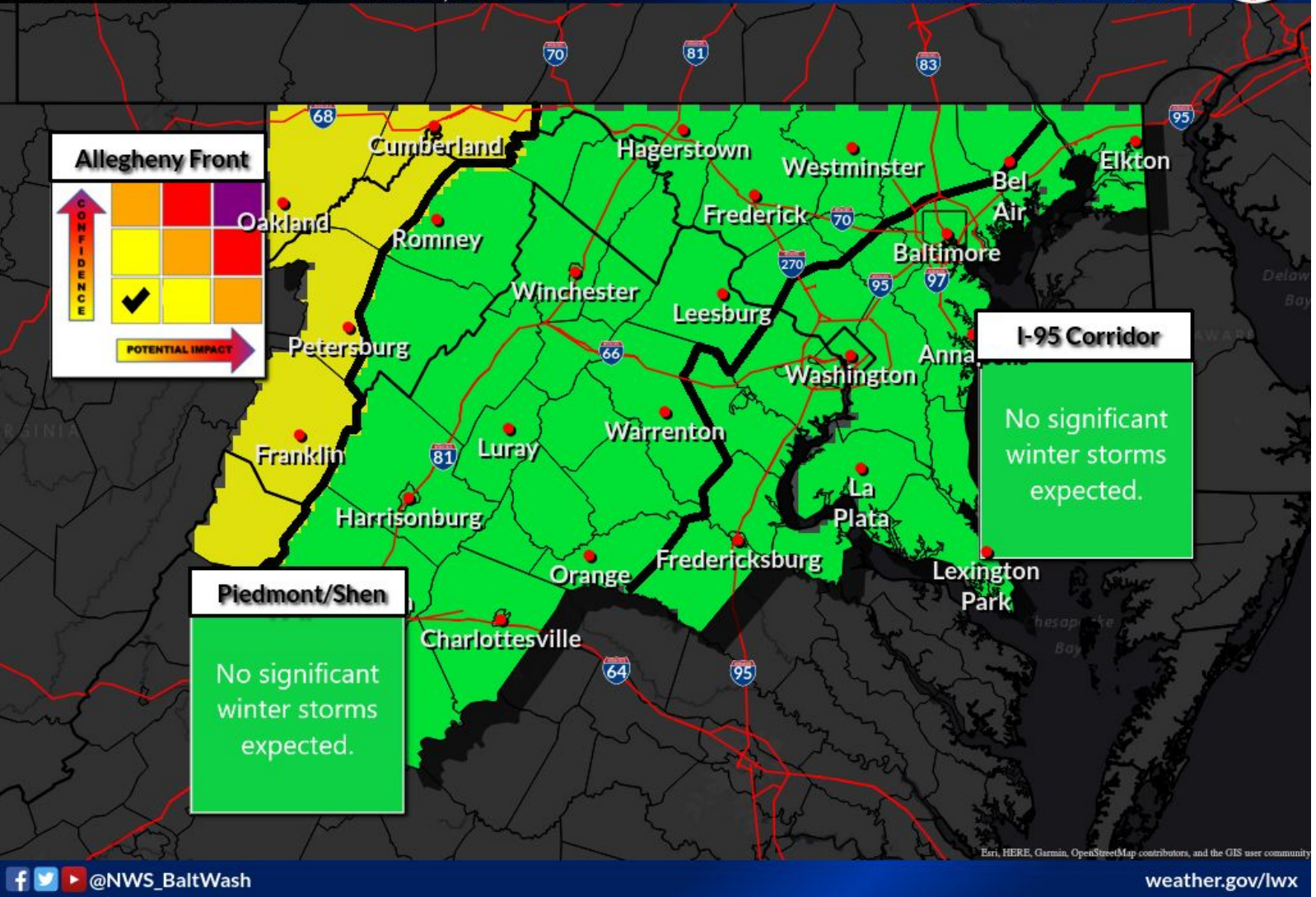
January 6, 2025
10:30 AM

Wednesday into Wednesday Night

Day 3 Winter Storm Threat

Valid 7 AM Wed Jan 08 to 7 AM Thu Jan 09, 2025

Weather Forecast Office
Baltimore/Washington
Issued Jan 06, 2025 9:52 AM EST



- Several inches of accumulating snow are possible in western MD Wednesday into Wednesday Night.

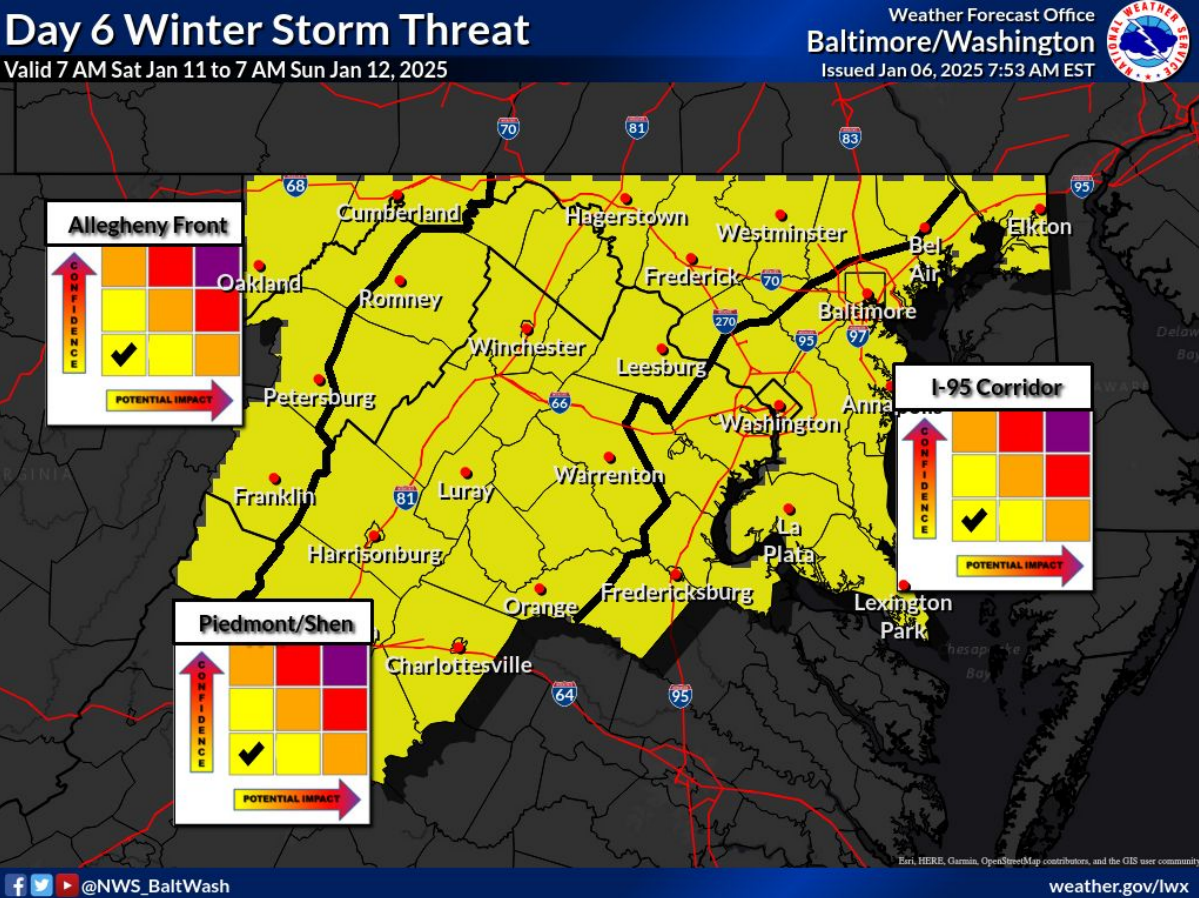
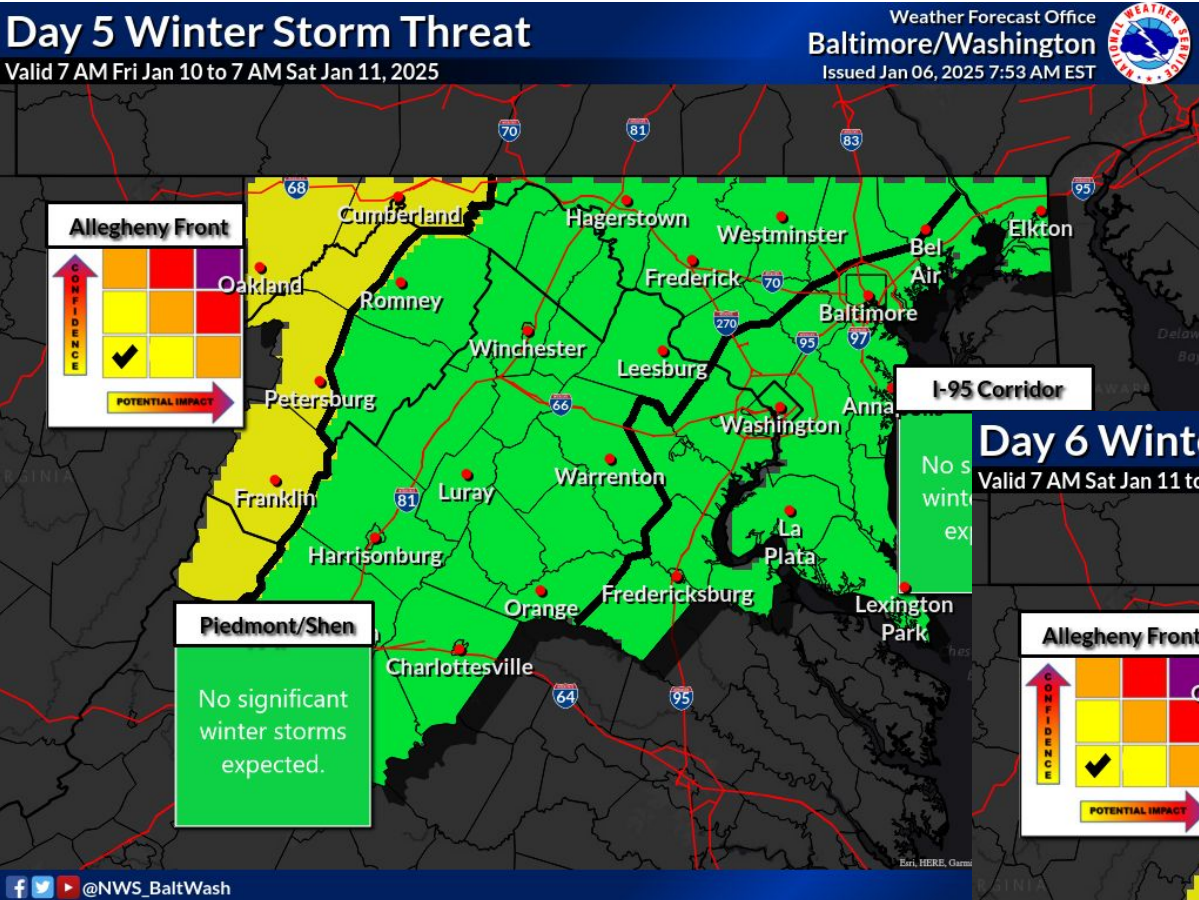




Slight Winter Storm Threat

January 6, 2025
10:30 AM

Friday Night into Saturday Night



- A strong area of low pressure could bring widespread snow to the area.
- Threat for snow begins in the Alleghenies Friday Night, then over the rest of the area on Saturday.
- Confidence is low regarding snow amounts, duration of snow, and timing of when snow could fall.





8-14 Day Outlook; Jan 13-19, 2025

January 6, 2025
10:30 AM

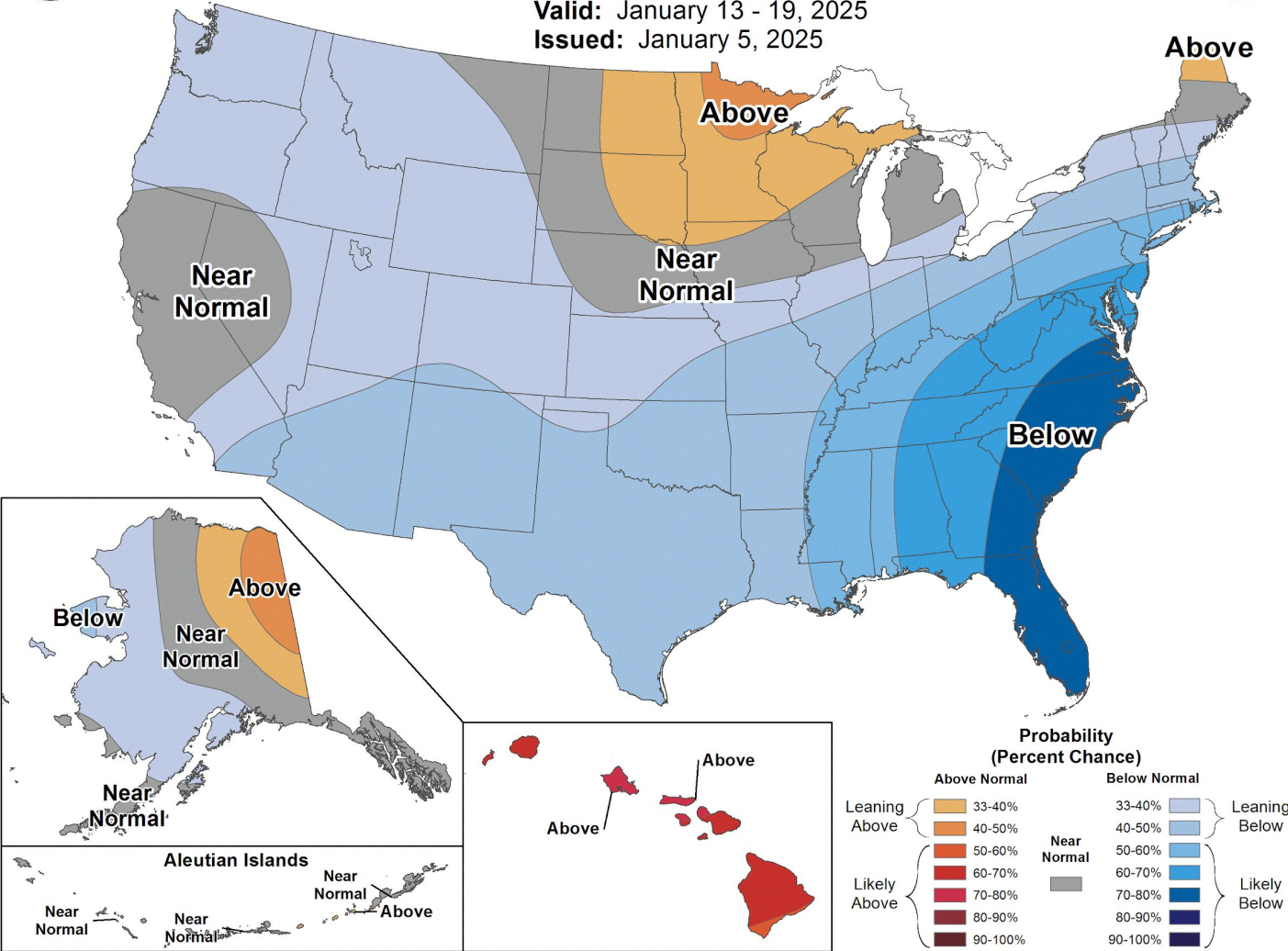
NWS Climate Prediction Center



8-14 Day Temperature Outlook



Valid: January 13 - 19, 2025
Issued: January 5, 2025



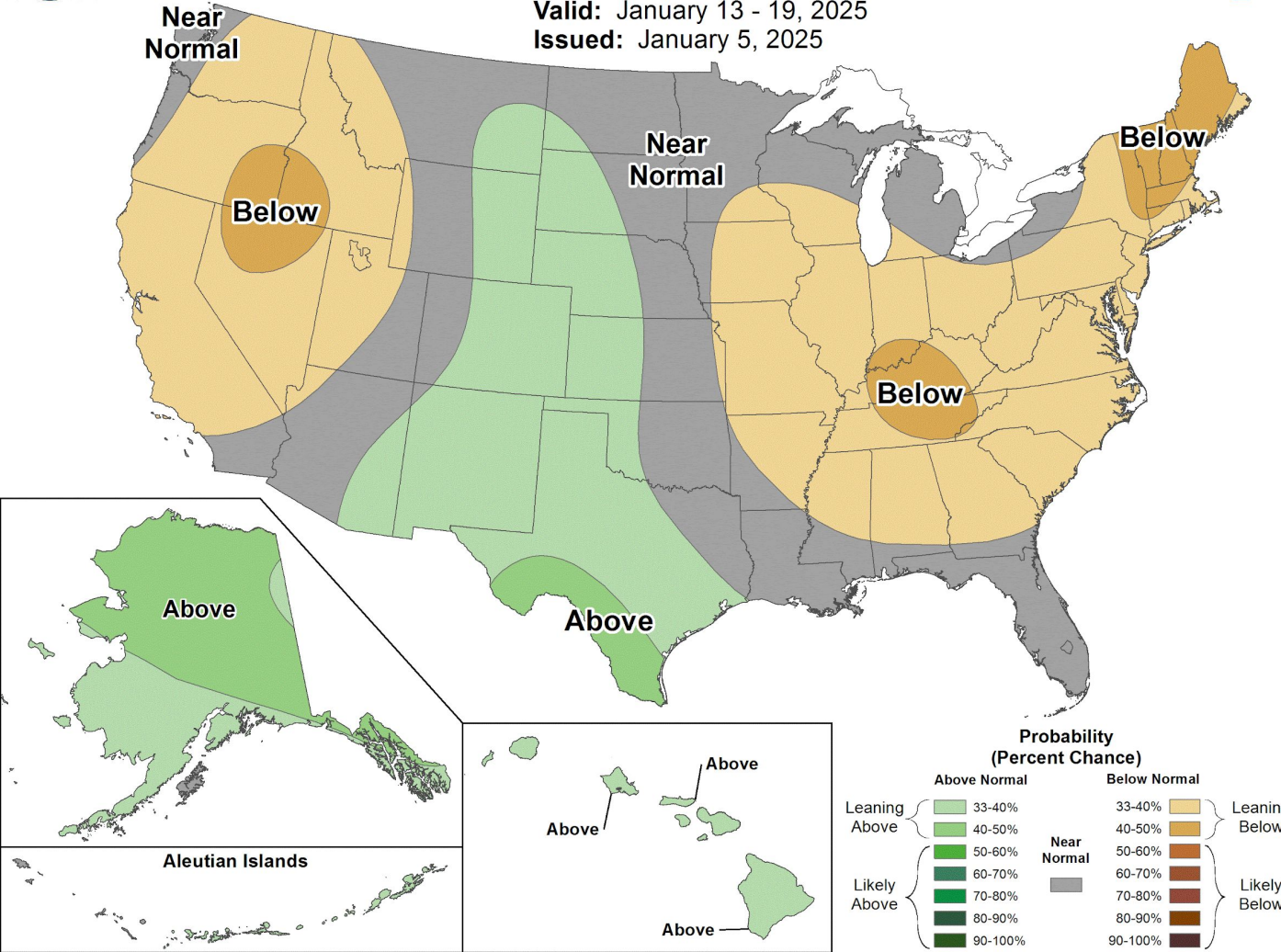
Leaning below normal temperatures



8-14 Day Precipitation Outlook



Valid: January 13 - 19, 2025
Issued: January 5, 2025



Leaning below precipitation

An extended period of below freezing temperatures will lead to ice developing on local rivers/streams.



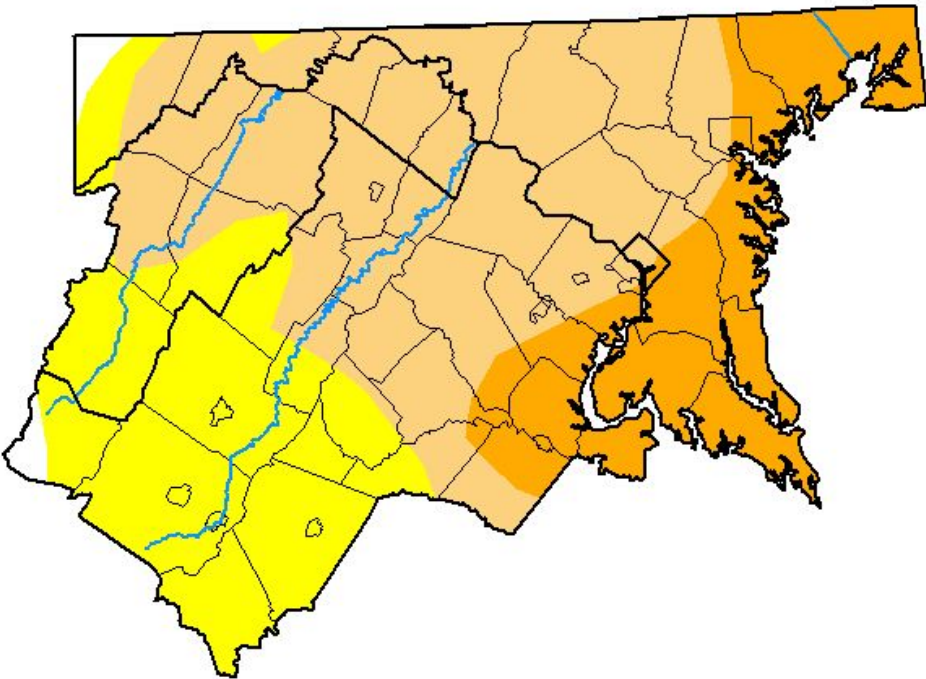


Current Drought Conditions

January 6, 2025
10:30 AM

Widespread Moderate Drought Continues

U.S. Drought Monitor Baltimore, MD/ Washington, DC WFO



December 31, 2024

(Released Wednesday, Jan. 1, 2025)

Valid 7 a.m. EST

Drought Conditions (Percent Area)

	None	D0-D4	D1-D4	D2-D4	D3-D4	D4
Current	1.14	98.86	69.26	20.07	0.00	0.00
Last Week 12-24-2024	0.58	99.42	69.26	20.07	0.00	0.00
3 Months Ago 10-01-2024	35.46	64.54	30.65	13.02	2.98	0.00
Start of Calendar Year 01-02-2024	30.93	69.07	32.89	8.96	0.00	0.00
Start of Water Year 10-01-2024	35.46	64.54	30.65	13.02	2.98	0.00
One Year Ago 01-02-2024	30.93	69.07	32.89	8.96	0.00	0.00

Intensity:

None	D2 Severe Drought
D0 Abnormally Dry	D3 Extreme Drought
D1 Moderate Drought	D4 Exceptional Drought

The Drought Monitor focuses on broad-scale conditions.
Local conditions may vary. For more information on the
Drought Monitor, go to <https://droughtmonitor.unl.edu/About.aspx>

Author:

Rocky Bilotta
NCEI/NOAA



droughtmonitor.unl.edu

- Most of the area is in Moderate to Severe drought.
- Recent snow will lead to possible improvements, though drought is likely to continue.





Summary of Key Messages

January 6, 2025
10:30 AM

Recap

- **Today through Tonight**
 - Winter Storm Warning remains in effect across the area. Additional accumulating wintry precipitation is expected through tonight.
 - Gale Warning goes into effect this evening for lower tidal Potomac, and much of the Chesapeake Bay.
- **Tuesday through Friday**
 - Dry and very cold conditions persist through the end of the week.
 - Snow on the ground will not quickly melt as temps remain near or below freezing through Friday.
 - Wind chills in the single digits are likely each night, with as low as -10F in the Allegheny Mountains.
 - Coldest wind chills Wednesday night into Thursday morning.
 - Gale Warning continues for portions of the waters through Tuesday afternoon.
 - Another period of snow is likely Wednesday into Wednesday night along/west of Allegheny Front.
- **Friday Night into Saturday Night**
 - Slight winter storm threat. If threat materializes, may cause travel disruptions.



Next Briefing

- ➔ 10:30 AM Friday, January 10, 2025
- ➔ If any new hazards arise, our “heads-up” email will be sent.
- ➔ Email us if you need to be added to our “heads-up” email list.



NWS Balt/Wash EM Webpage

- ➔ weather.gov/lwx/empage



Contact Information

Email

- ➔ nws-sterling-wxsupport@noaa.gov

Social Media

- ➔ facebook.com/NWSBaltWash
- ➔ [@NWS_BaltWash](https://twitter.com/NWS_BaltWash)

