

Town of Warrenton, Virginia

Office of Emergency Management

SPOT REPORT: # 6

DATE:01/05/2025

TIME: 1200

OVERVIEW: Winter Storm Blair

- A **Winter Storm Warning** is in effect late Sunday into Monday night for the entire area.
- Moderate winter storm threat from accumulating snow.
- Potential impacts include significant travel delays and closures.
- Snow will mix with sleet and freezing rain, especially near and south of Interstate 66. Dry and very cold Tuesday through Friday.
- Wind Chills in single digits each morning Tuesday through Friday. Near zero wind chills are possible on Thursday morning.
- Snow on the ground is not likely to melt.
- Another period of steady snow is expected Monday evening before precipitation ends late.
- Two strike teams of Va. Army National Guard high-wheeled vehicle/debris teams will be at Warrenton VAANG Armory as a regional asset under the control of VDEM. Warrenton EM has prepared documents to request support should the need arise.
- VDEM State EOC and our Region 2 VDEM team will have their EOCs staffed starting Sunday night.
- Public Works has crews activated to begin 24hr staffing operations starting Sunday evening at 2000hrs.
- VDOT has already begun road operations to prep hard surfaces, Road crews will be staged and ready Sunday night.
- Town Emergency Management is in monitoring mode due to the storm being >24 hours from arrival. The incident is currently projected to be a type 3/4 rating.

Please monitor spot reports closely | Be prepared for travel delays and disruptions.

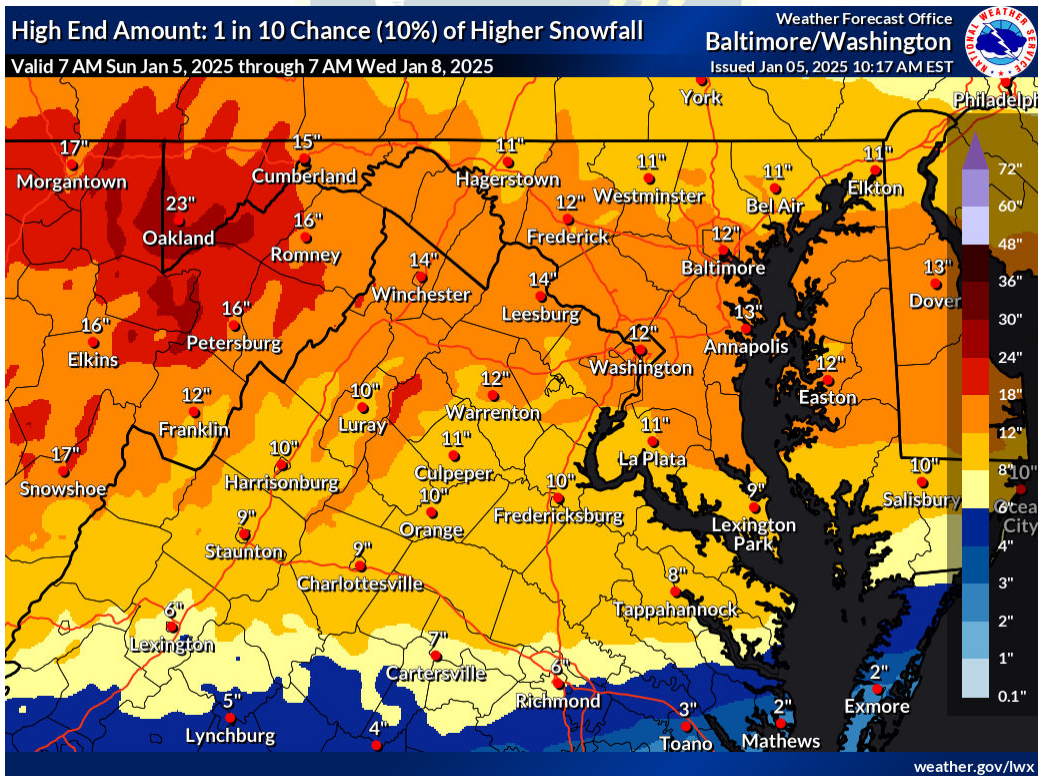
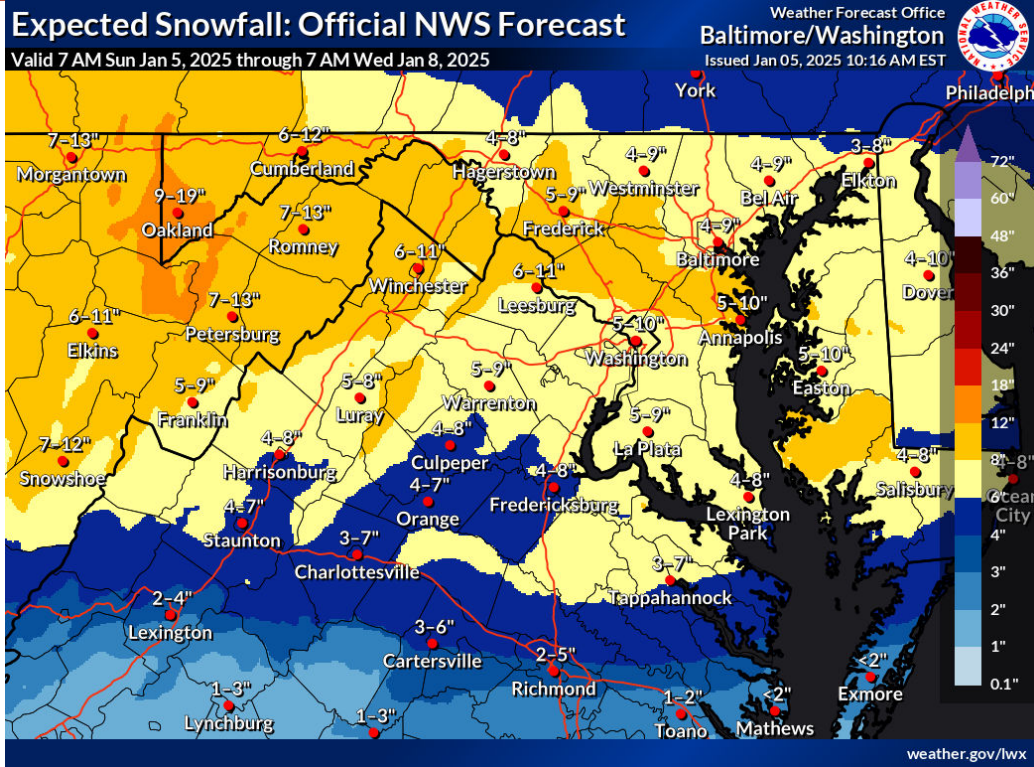
Town of Warrenton, Virginia

Office of Emergency Management

TIMING:	<p>January 5th:</p> <ul style="list-style-type: none">• Snow is expected to begin between 9 and 11 PM• Accumulation is forecasted to be light, with 1-3 inches possible. <p>January 6th:</p> <ul style="list-style-type: none">• Heavy snow is most likely between 4 AM and 10 AM Monday morning.• Snow is likely to continue throughout the day.• Accumulation is expected to be moderate to heavy, with 4-8 inches possible.• Late Monday afternoon, snow turns into freezing rain which will turn to ice followed by an evening accumulating snow shower.
IMPACTS:	<p>Total Snowfall:</p> <ul style="list-style-type: none">• The total snowfall accumulation over the two days is predicted to be in the range of 5-11 inches.• Snowfall rates around 1-2" per hour are possible.• Sleet may mix later Monday morning and afternoon.
ALERT LEVEL:	Monitoring – Storm less than 24 hours out
NEXT REPORT:	01/05/2025 @ 1800

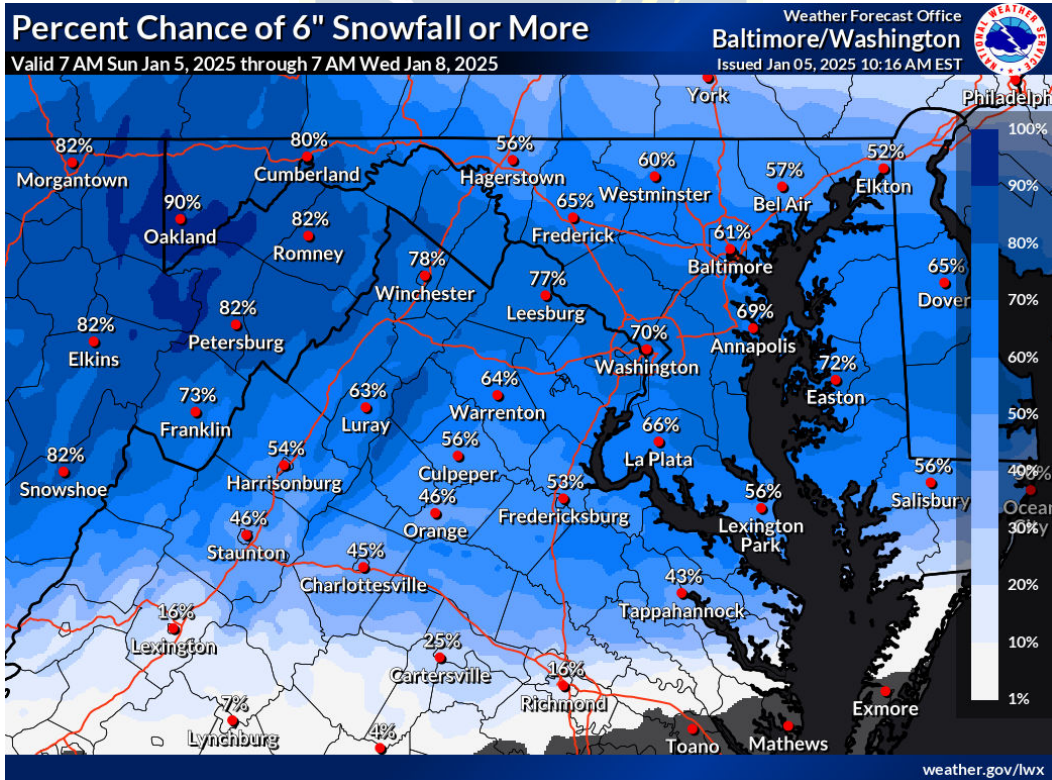
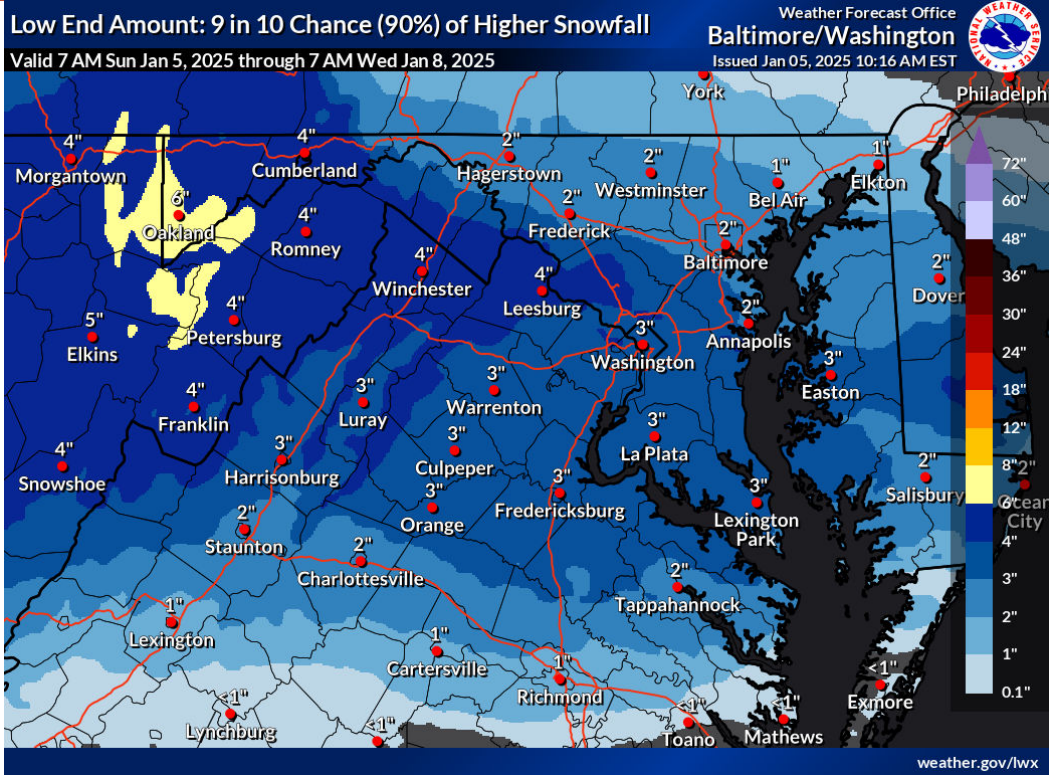
Town of Warrenton, Virginia

Office of Emergency Management



Town of Warrenton, Virginia

Office of Emergency Management



Town of Warrenton, Virginia

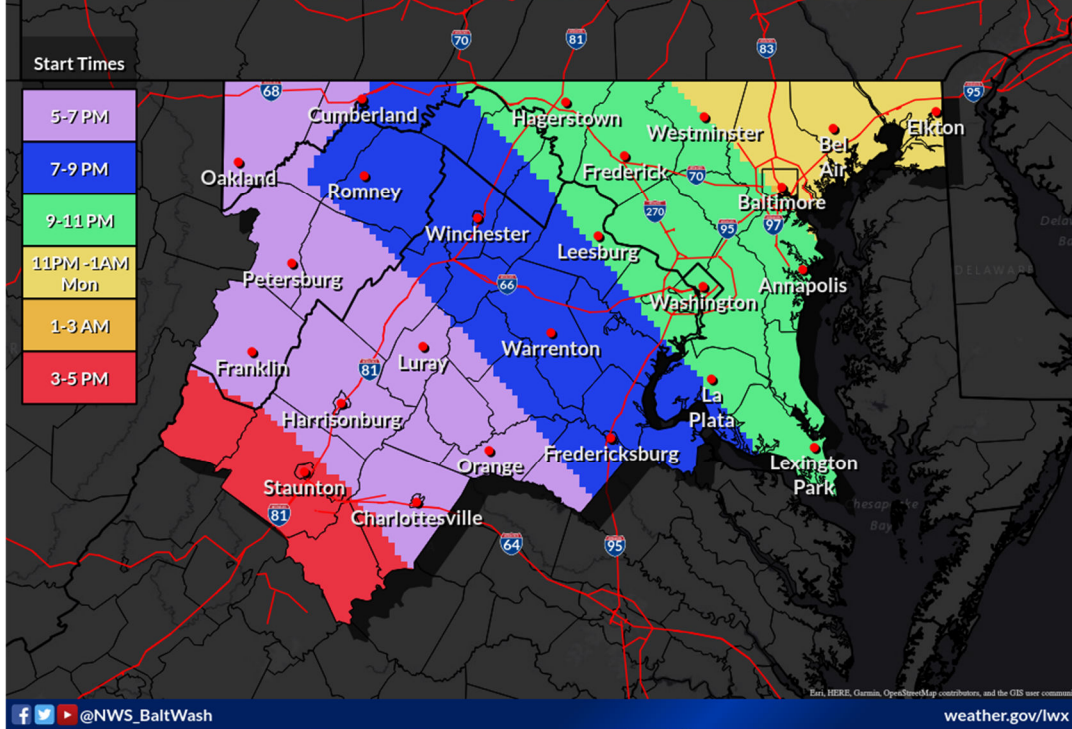
Office of Emergency Management

Winter Precip Onset Times

Valid 4 PM Sun Jan 05 to 3 AM Mon Jan 06, 2025

Weather Forecast Office
Baltimore/Washington

Issued Jan 05, 2025 7:51 AM EST

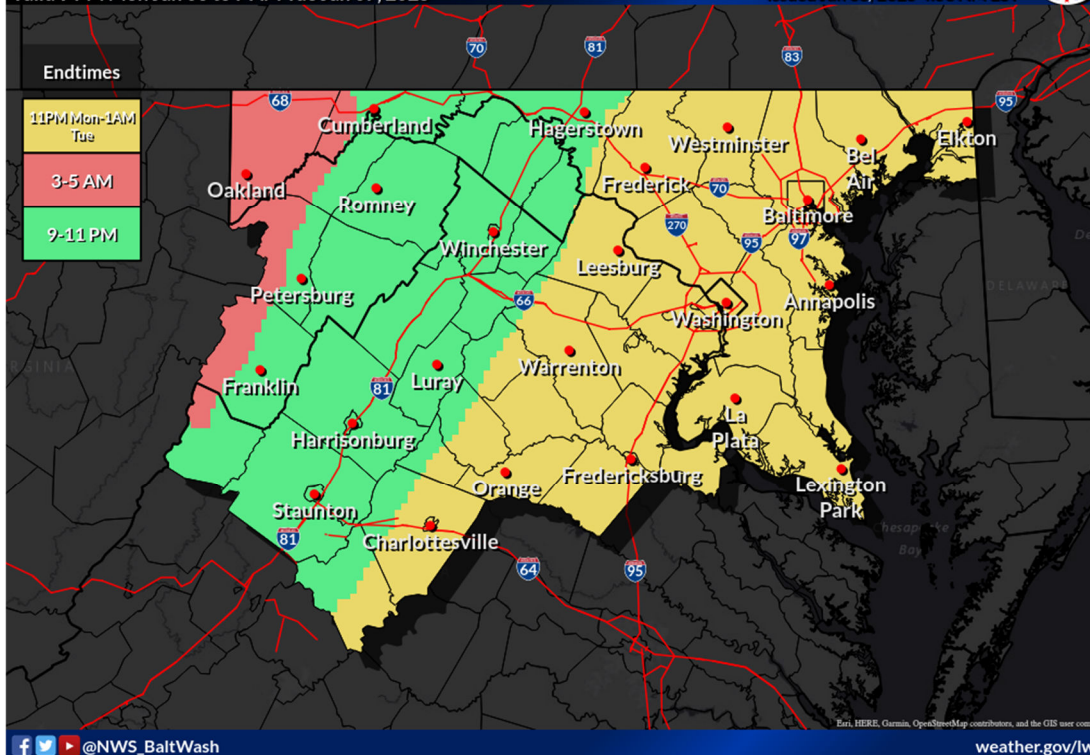


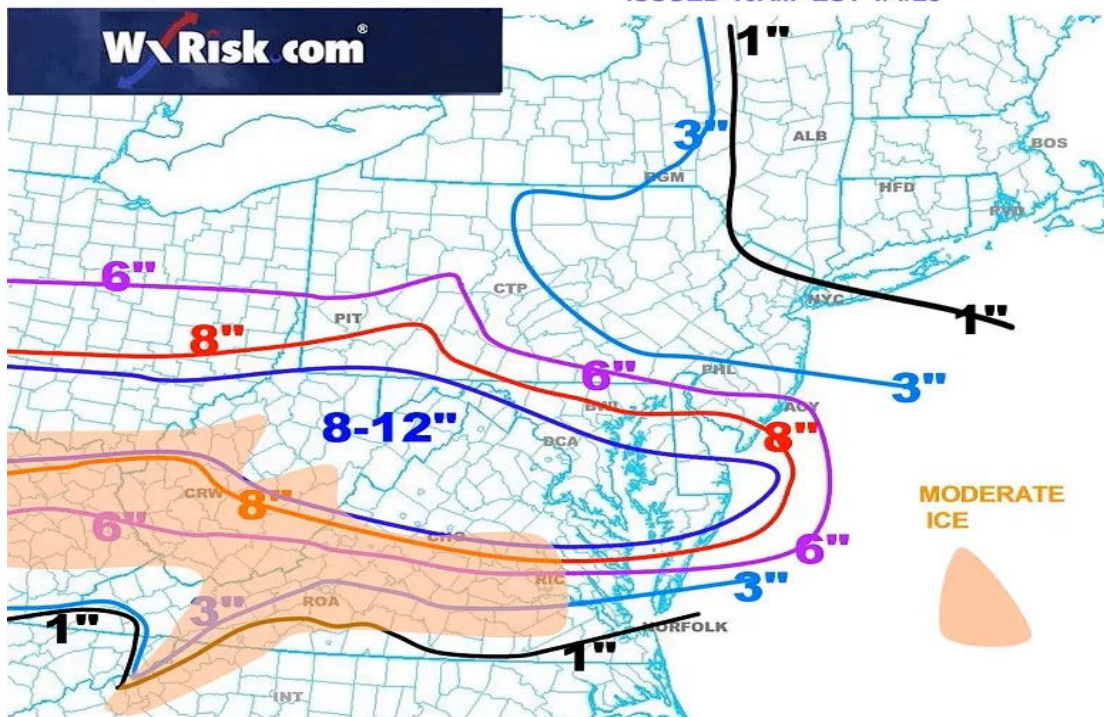
Winter Precip End Times

Valid 9 PM Mon Jan 06 to 7 AM Tue Jan 07, 2025

Weather Forecast Office
Baltimore/Washington

Issued Jan 05, 2025 4:53 AM EST





Town of Warrenton, Virginia

Office of Emergency Management

Situational Awareness For Emergency Response

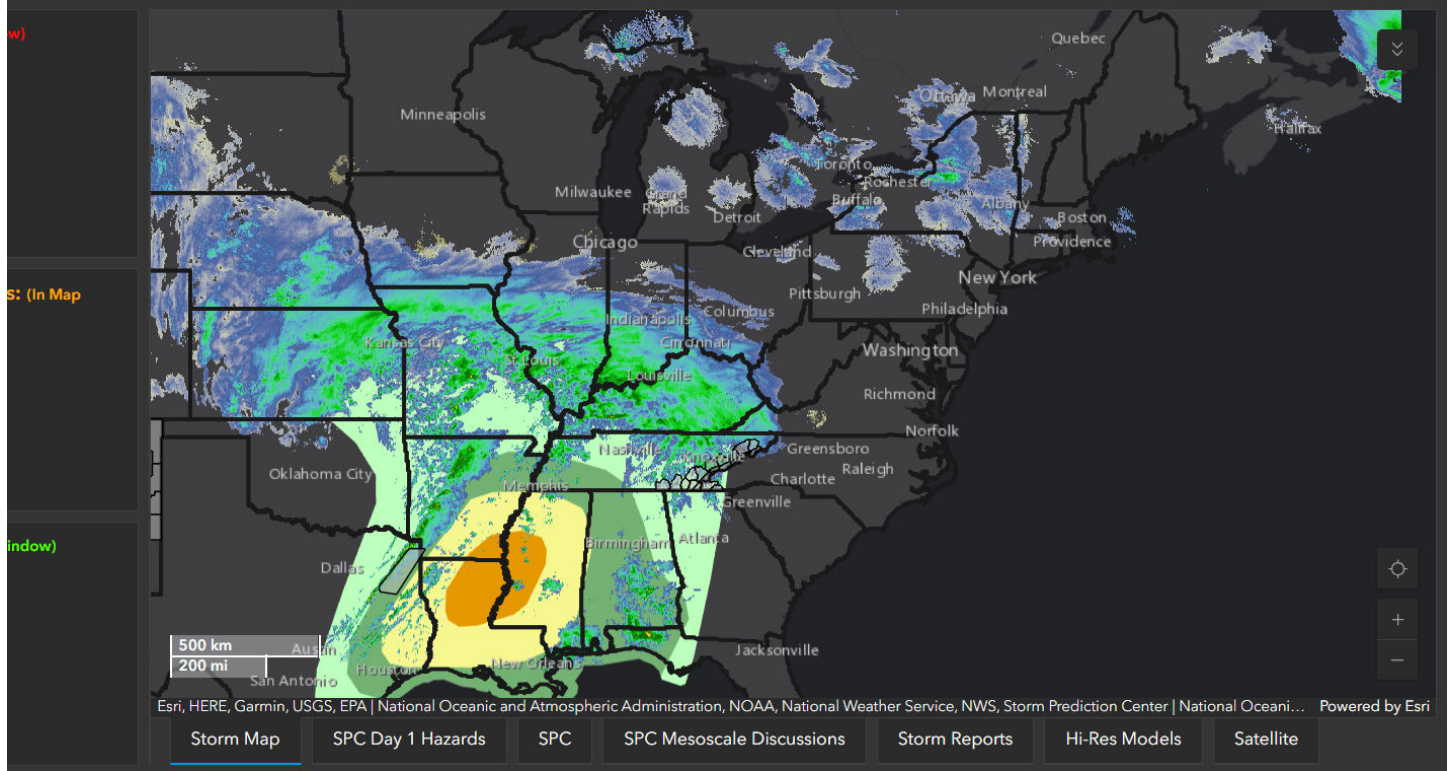
NOAA/National Weather Service



Wildfire-SAFER

Looping Radar + Watch/Warnings

Latest Weather Graphics




**EMERGENCY
MANAGEMENT**

Town of Warrenton, Virginia

Office of Emergency Management

Current conditions at Warrenton-Fauquier Airport (KHWY)

Lat: 38.59°N Lon: 77.72°W Elev: 302ft.



Fair
31°F
-1°C

Humidity 42%
Wind Speed W 5 mph
Barometer 30.24 in
Dewpoint 10°F (-12°C)
Visibility 10.00 mi
Wind Chill 26°F (-3°C)
Last update 5 Jan 10:35 am EST

More Information:
[Local Forecast Office](#)
[More Local Wx](#)
[3 Day History](#)
[Hourly Weather Forecast](#)

Extended Forecast for Warrenton VA

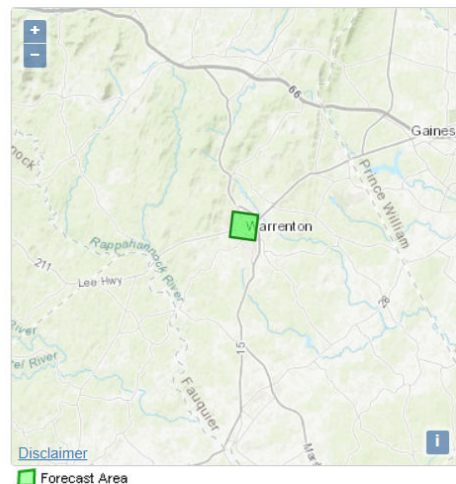
[Click here for hazard details and duration](#)

Winter Storm Warning								
Today	Tonight	Monday	Monday Night	Tuesday	Tuesday Night	Wednesday	Wednesday Night	Thursday
High: 36 °F	Low: 24 °F	High: 28 °F	Low: 20 °F	High: 33 °F	Low: 17 °F	High: 29 °F	Low: 11 °F	High: 28 °F
Increasing Clouds	Snow Likely then Snow/Sleet	Windy Mix	Snow/Sleet Likely then Chance Snow	Mostly Sunny	Partly Cloudy	Mostly Sunny	Partly Cloudy	Sunny

Detailed Forecast

Today	Increasing clouds, with a high near 36. West wind 6 to 8 mph.
Tonight	Snow before 3am, then snow, possibly mixed with sleet. The snow could be heavy at times. Low around 24. Calm wind becoming east around 5 mph after midnight. Chance of precipitation is 100%. New snow and sleet accumulation of 3 to 5 inches possible.
Monday	Snow, possibly mixed with sleet before 10am, then snow, possibly mixed with freezing rain and sleet. High near 28. East wind 5 to 8 mph becoming north in the afternoon. Chance of precipitation is 100%. New ice accumulation of less than a 0.1 of an inch possible. New snow and sleet accumulation of 1 to 3 inches possible.
Monday Night	Snow likely, possibly mixed with sleet, becoming all snow after 7pm, then gradually ending. Cloudy, then gradually becoming partly cloudy, with a low around 20. Northwest wind 10 to 15 mph, with gusts as high as 26 mph. Chance of precipitation is 70%. New snow and sleet accumulation of less than one inch possible.
Tuesday	Mostly sunny, with a high near 33. Northwest wind 15 to 17 mph, with gusts as high as 31 mph.
Tuesday Night	Partly cloudy, with a low around 17.
Wednesday	Mostly sunny, with a high near 29.
Wednesday Night	Partly cloudy, with a low around 11.
Thursday	Sunny, with a high near 28.
Thursday Night	Mostly clear, with a low around 12.
Friday	Mostly sunny, with a high near 33.
Friday Night	A chance of snow. Mostly cloudy, with a low around 23. Chance of precipitation is 30%.
Saturday	A chance of snow. Partly sunny, with a high near 35. Chance of precipitation is 30%.

Topographic
Click Map For Forecast



ABOUT THIS FORECAST

Point Forecast: Warrenton VA
38.72°N 77.8°W (Elev. 600 ft)

Town of Warrenton, Virginia

Office of Emergency Management

Winter Storm Warning

URGENT - WINTER WEATHER MESSAGE

National Weather Service Baltimore MD/Washington DC

354 PM EST Sat Jan 4 2025

MDZ016>018-VAZ039-040-051-055-057-502-050500-

/O.UPG.KLWX.WS.A.0002.250106T0000Z-250107T0600Z/

/O.NEW.KLWX.WS.W.0002.250105T2300Z-250107T0600Z/

Charles-St. Marys-Calvert-Madison-Rappahannock-Culpeper-Stafford-

King George-Southern Fauquier-

354 PM EST Sat Jan 4 2025

...WINTER STORM WARNING IN EFFECT FROM 6 PM SUNDAY TO 1 AM EST
TUESDAY...

* WHAT...Heavy mixed precipitation expected. Total snow and sleet
accumulations between 5 and 8 inches, with amounts of 10 to 12
inches possible in isolated spots if heavy banding sets up in this
area. Ice accumulations around one tenth of an inch.

* WHERE...Portions of southern Maryland and central, northern, and
northwest Virginia.

* WHEN...From 6 PM Sunday to 1 AM EST Tuesday. Highest snowfall
rates occur overnight Sunday into early Monday morning. Snow will
mix with sleet and freezing rain Monday morning into the
afternoon. A lull in precipitation will occur sometime during the
afternoon.

* IMPACTS...Roads, and especially bridges and overpasses, will
likely become slick and hazardous. Travel could be very difficult.
The hazardous conditions could impact the Monday morning and
evening commutes.

* ADDITIONAL DETAILS...A second round of heavy snow is possible
Monday evening before precipitation ends.

PRECAUTIONARY/PREPAREDNESS ACTIONS...

If you must travel, keep an extra flashlight, food, and water in
your vehicle in case of an emergency. The latest road conditions for
the state you are calling from can be obtained by calling 5 1 1.

Persons should consider delaying all travel. If travel is absolutely
necessary, drive with extreme caution. Consider taking a winter
storm kit along with you, including such items as tire chains,
booster cables, flashlight, shovel, blankets and extra clothing.
Also take water, a first aid kit, and anything else that would help
you survive in case you become stranded.

&&

\$\$