

Town of Warrenton, Virginia

Office of Emergency Management

SPOT REPORT: # 8

DATE:01/06/2025

TIME: 1230

OVERVIEW: Winter Storm Blair

- A **Winter Storm Warning** is in effect late Sunday into Monday night for the entire area.
- Moderate winter storm threat from accumulating snow.
- Potential impacts include significant travel delays and closures.
- Snow will mix with sleet and freezing rain, especially near and south of Interstate 66. Dry and very cold Tuesday through Friday.
- Wind Chills in single digits each morning Tuesday through Friday. Near zero wind chills are possible on Thursday morning.
- Snow on the ground is not likely to melt.
- Another period of steady snow is expected Monday evening before precipitation ends late.

Operations Activities

- Approximately 9" of Snow and Sleet Mixture have fallen with a significant taper off of the storm as of 1000.
- Public Works is mobilized and clearing primary routes with a secondary streets underway as of 1200.
- Police are out assisting with traffic hazards, stuck vehicles, and calls for service.
- Town Emergency Management is in activation mode due to the storm's arrival. The incident is currently projected to be a type 3/4 rating.
- Town Operations have been moved to level two – telework/remote operations, liberal leave has been authorized for non-essential personnel.

County Status:

Town of Warrenton, Virginia

Office of Emergency Management

County Offices will be CLOSED Monday – Emergency and Essential Personnel to report based on their schedules.

County Schools Closed Monday.

Courts Status:

All three Courts have CLOSED Monday.

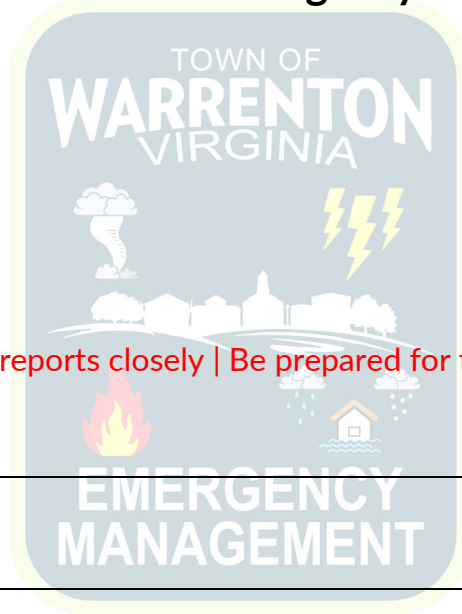
Emergency Declarations:

Fauquier County Local Declaration of Emergency signed today (Sunday).

Governor of Virginia Declared a State of Emergency signed Saturday.

Town of Warrenton Declaration of Emergency 01/05 @ 1900

Please monitor spot reports closely | Be prepared for travel delays and disruptions.



Town of Warrenton, Virginia

Office of Emergency Management

TIMING:	<p>January 5th:</p> <ul style="list-style-type: none">• Snow is expected to begin between 9 and 11 PM• Accumulation is forecasted to be light, with 1-3 inches possible. <p>January 6th:</p> <ul style="list-style-type: none">• Heavy snow is most likely between 4 AM and 10 AM Monday morning.• Snow is likely to continue throughout the day.• Accumulation is expected to be moderate to heavy, with 4-8 inches possible.• Late Monday afternoon, snow turns into freezing rain which will turn to ice followed by an evening accumulating snow shower.
IMPACTS:	<p>Total Snowfall:</p> <ul style="list-style-type: none">• The total snowfall accumulation over the two days is predicted to be in the range of 5-12 inches with a boom scenario of 15".• Snowfall rates around 1-2" per hour are expected.• The risk of sleet mix later Monday morning and afternoon has significantly diminished.
ALERT LEVEL:	Activated – Virtual EOC Public Works - Operations Center is live as of 1600
NEXT REPORT:	01/06/2025 @ 0700

Town of Warrenton, Virginia

Office of Emergency Management

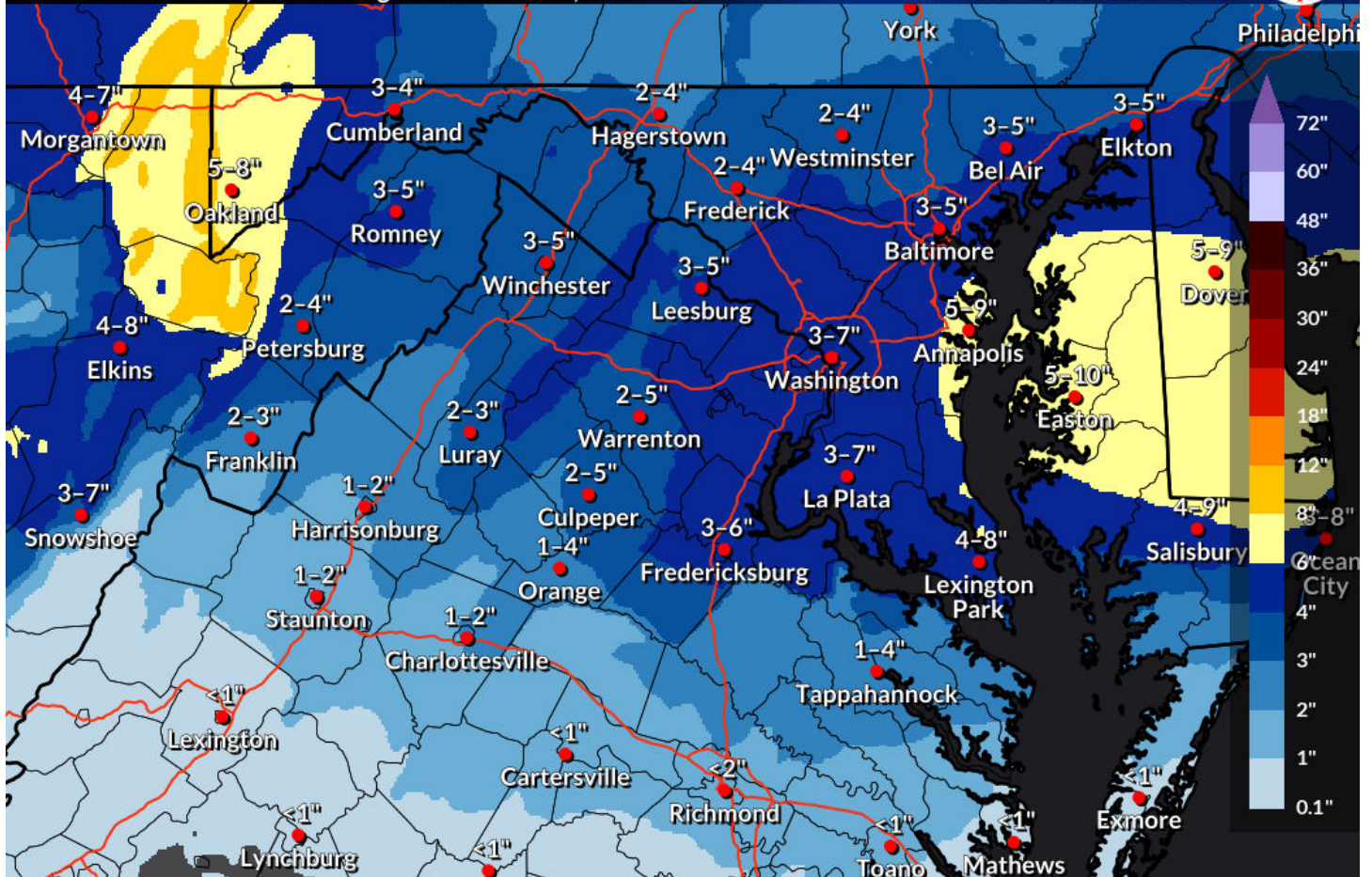
Expected Snowfall: Official NWS Forecast

Weather Forecast Office
Baltimore/Washington



Valid 7 AM Mon Jan 6, 2025 through 7 AM Thu Jan 9, 2025

Issued Jan 06, 2025 12:16 PM EST



weather.gov/lwx

Town of Warrenton, Virginia

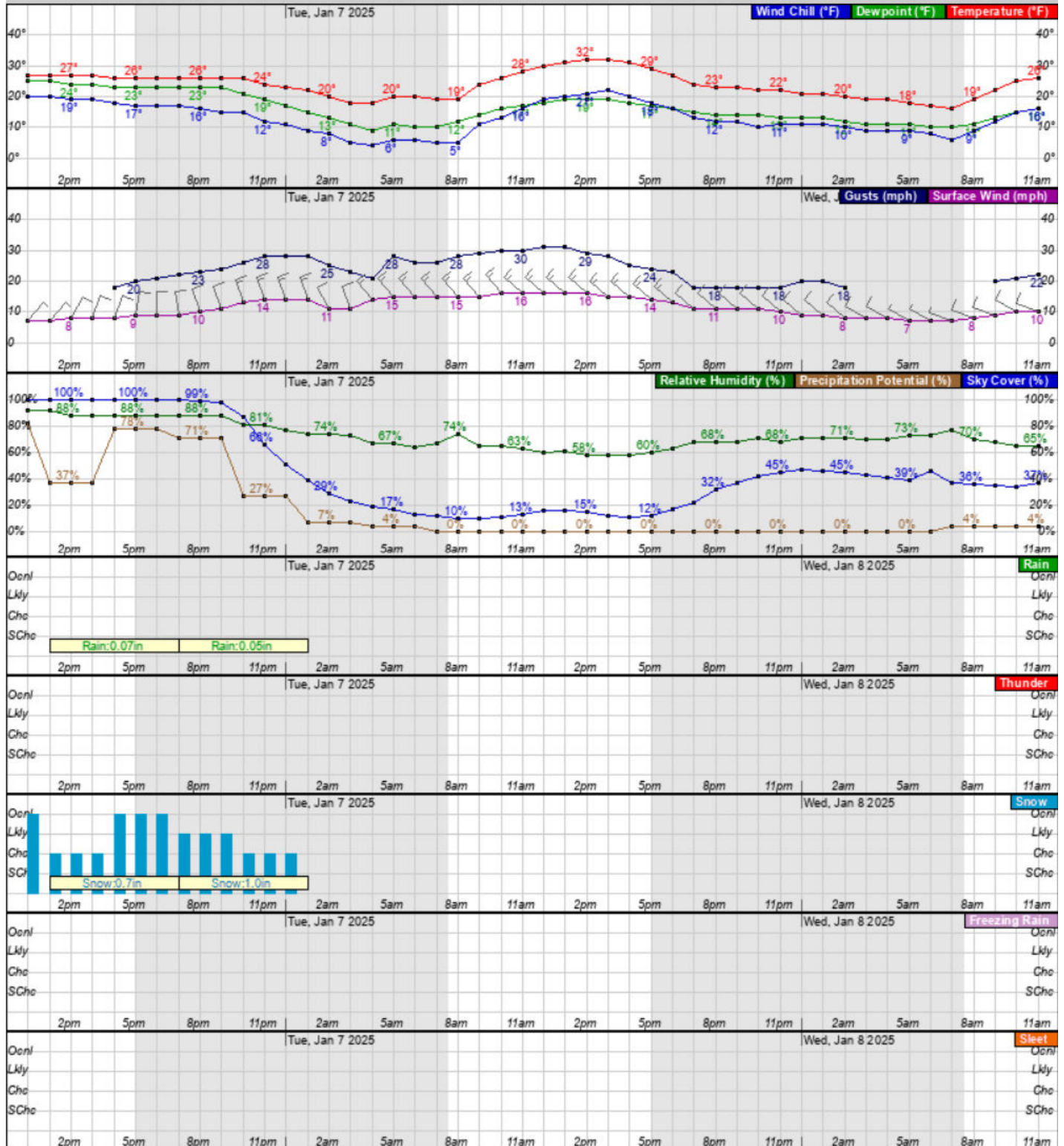
Office of Emergency Management

48-Hour Period Starting: 12pm Mon, Jan 6 2025

Submit

Back 2 Days

Forward 2 Days



Town of Warrenton, Virginia

Office of Emergency Management

Hazardous Weather Conditions

- [Winter Storm Warning until January 7, 01:00 AM EST](#)
- [Hazardous Weather Outlook](#)

Current conditions at

Warrenton-Fauquier Airport (KHWY)

Lat: 38.59°N Lon: 77.72°W Elev: 302ft.



Light Snow
29°F
-2°C

Humidity 85%
Wind Speed NE 9 mph
Barometer 29.72 in
Dewpoint 25°F (-4°C)
Visibility 10.00 mi
Wind Chill 21°F (-6°C)
Last update 6 Jan 12:35 pm EST

More Information:

[Local Forecast Office](#)
[More Local Wx](#)
[3 Day History](#)
[Hourly Weather Forecast](#)

Extended Forecast for

2 Miles WSW Warrenton VA



[Click here for hazard details and duration](#)

NOW until 1:00am Tue

Winter Storm Warning

Winter Storm Warning

This Afternoon

80%

High: 28 °F

Snow

Tonight

80% → 30%

Low: 18 °F

Snow then
Chance Snow

Tuesday

High: 33 °F

Sunny

Tuesday Night

Low: 15 °F

Partly Cloudy

Wednesday

High: 30 °F

Mostly Sunny

Wednesday Night

Low: 11 °F

Partly Cloudy

Thursday

High: 28 °F

Sunny

Thursday Night

Low: 14 °F

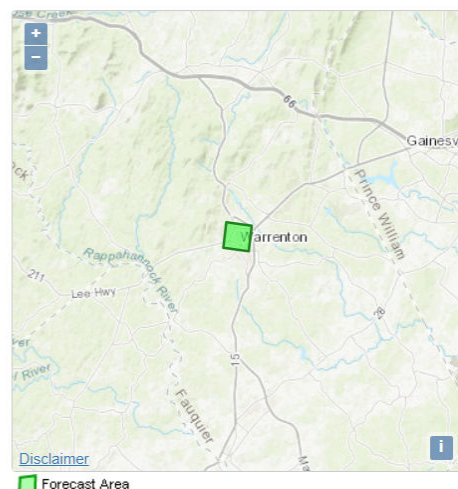
Mostly Clear

Detailed Forecast

This Afternoon	Snow, mainly after 4pm. High near 28. North wind around 8 mph, with gusts as high as 18 mph. Chance of precipitation is 80%. Total daytime snow accumulation of 2 to 4 inches possible.
Tonight	Snow, mainly before 10pm. Low around 18. North wind 9 to 14 mph, with gusts as high as 28 mph. Chance of precipitation is 80%. New snow accumulation of 1 to 2 inches possible.
Tuesday	Sunny, with a high near 33. Northwest wind around 16 mph, with gusts as high as 31 mph.
Tuesday Night	Partly cloudy, with a low around 15. Northwest wind 8 to 11 mph, with gusts as high as 20 mph.
Wednesday	Mostly sunny, with a high near 30. West wind 7 to 11 mph, with gusts as high as 23 mph.
Wednesday Night	Partly cloudy, with a low around 11.
Thursday	Sunny, with a high near 28.
Thursday Night	Mostly clear, with a low around 14.
Friday	Mostly sunny, with a high near 33.
Friday Night	A chance of snow after 1am. Mostly cloudy, with a low around 20. Chance of precipitation is 40%.
Saturday	A chance of snow. Partly sunny, with a high near 33. Chance of precipitation is 30%.
Saturday Night	Partly cloudy, with a low around 19.
Sunday	Sunny, with a high near 36.

Topographic

[Click Map For Forecast](#)



ABOUT THIS FORECAST

Town of Warrenton, Virginia

Office of Emergency Management

URGENT - WINTER WEATHER MESSAGE

National Weather Service Baltimore MD/Washington DC

839 AM EST Mon Jan 6 2025

DCZ001-MDZ004-005-011-013-014-503>506-VAZ053-054-501-505-506-526-527-062145-

/O.CON.KLWX.WS.W.0002.000000T0000Z-250107T0600Z/

District of Columbia-Frederick MD-Carroll-Southern Baltimore-

Prince Georges-Anne Arundel-Northwest Montgomery-Central and

Southeast Montgomery-Northwest Howard-Central and Southeast

Howard-Fairfax-Arlington/Falls Church/Alexandria-Northern

Fauquier-Western Loudoun-Eastern Loudoun-Northwest Prince William-

Central and Southeast Prince William/Manassas/Manassas Park-

839 AM EST Mon Jan 6 2025

...WINTER STORM WARNING REMAINS IN EFFECT UNTIL 1 AM EST TUESDAY...

* WHAT...Heavy snow. Total snow accumulations between 6 and 10 inches, with amounts of up to 12 inches possible in isolated spots if heavy banding sets up in this area. Ice accumulations of a trace are possible with localized amounts up to 0.10" across portions of the central VA Piedmont.

* WHERE...Washington DC, central, north central, and northern Maryland, and northern Virginia.

* WHEN...Until 1 AM EST Tuesday.

* IMPACTS...Untreated and unplowed roads may become impassable. During the times of heaviest snowfall, even primary roads may be impassable. It is highly recommended to postpone non-essential travel.

* ADDITIONAL DETAILS...Snowfall rates between 1 to 2 inches per hour are possible through mid morning. There will be a break from late morning through early afternoon with intermittent light snow, with possible sleet or freezing drizzle. A second round of snow is likely late this afternoon and evening before precipitation ends tonight. Current snow accumulations generally ranging between 4 to 8 inches across the Baltimore and DC metro areas. Additional snow accumulations of 1 to 3 inches expected later this afternoon and evening.

PRECAUTIONARY/PREPAREDNESS ACTIONS...

If you must travel, keep an extra flashlight, food, and water in your vehicle in case of an emergency. The latest road conditions for the state you are calling from can be obtained by calling 5 1 1.

Persons should consider delaying all travel. Motorists should use extreme caution if travel is absolutely necessary.