

# ARRINGTON

## Community Plan



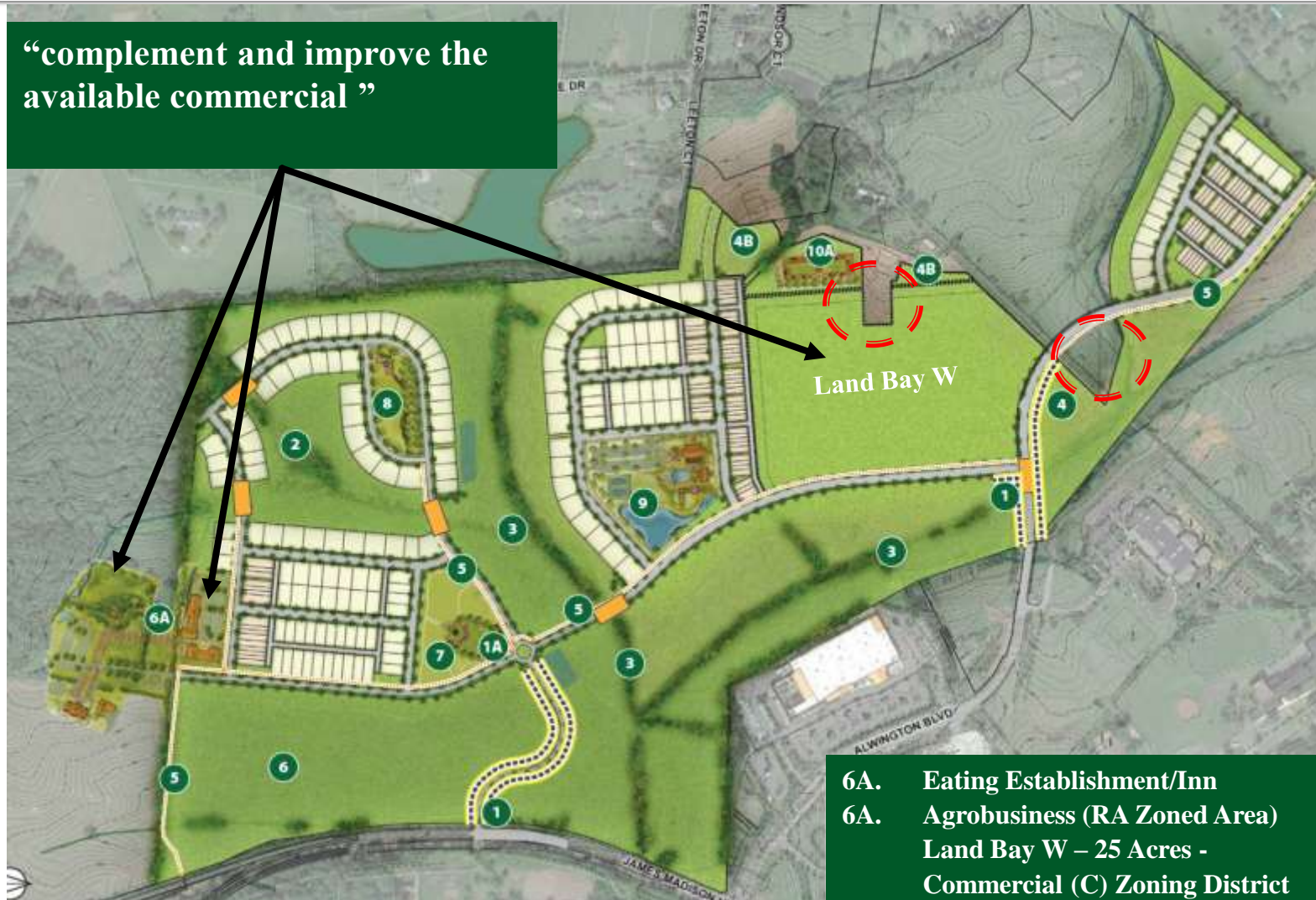
Leeton Forest log house w/two-story additions  
(ca. 1830 log portion, ca. 1870 & 1920  
two-story additions)





# Community Planning Principles & Comprehensive Plan Implementation

“complement and improve the available commercial ”





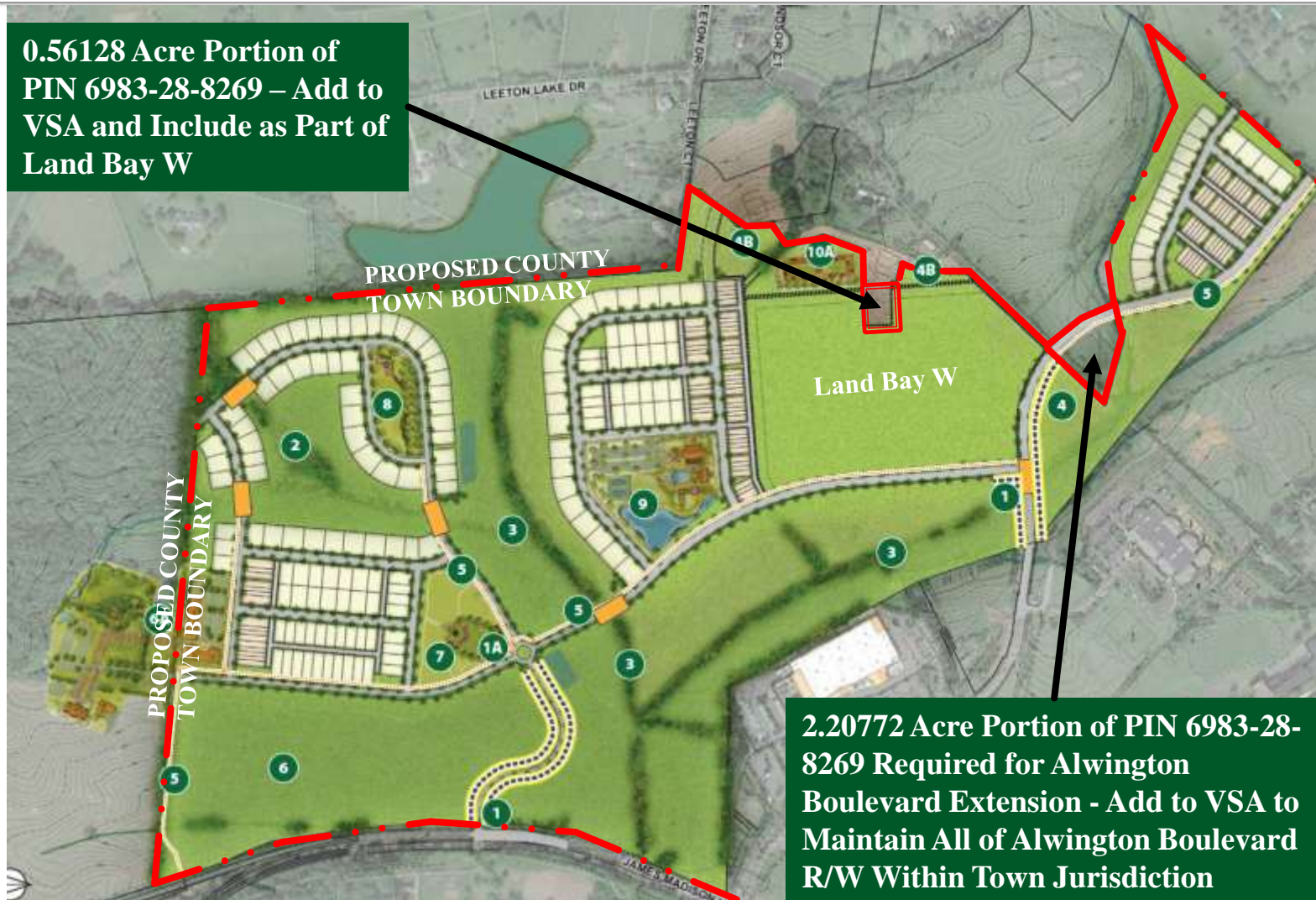
# Town of Warrenton/Fauquier County Boundary Line Adjustment Per VSA





# Two Small Parcels Added to VSA

0.56128 Acre Portion of  
PIN 6983-28-8269 – Add to  
VSA and Include as Part of  
Land Bay W



2.20772 Acre Portion of PIN 6983-28-  
8269 Required for Alwington  
Boulevard Extension - Add to VSA to  
Maintain All of Alwington Boulevard  
R/W Within Town Jurisdiction