

# Red Truck Bakery

---

Proposed Exterior Improvements

wood + starr

---

May 2026

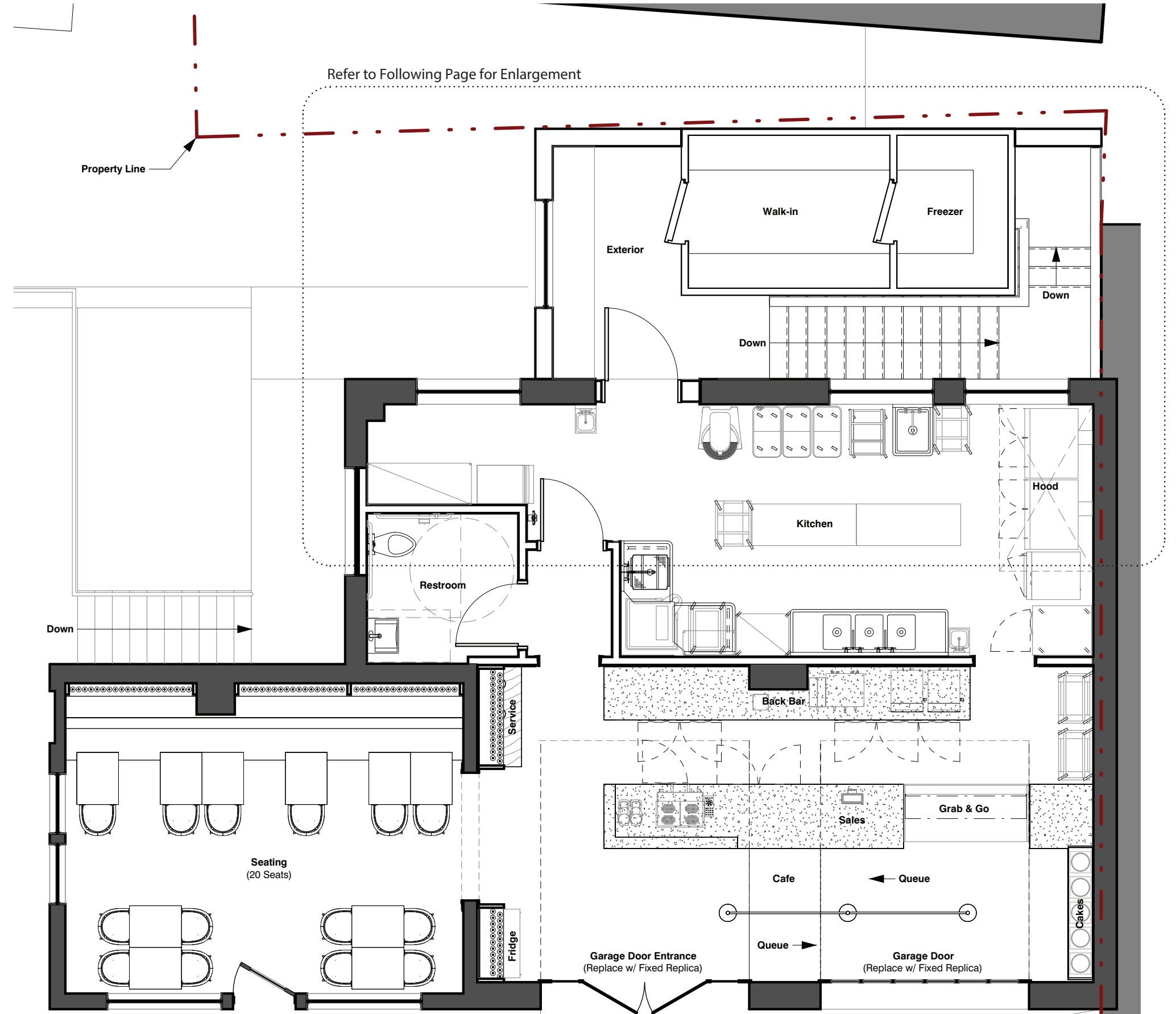


- Existing garage doors are in poor condition and perform poorly.
- Existing entry feels awkward and should be better integrated.
- The large paved area limits the site's sense of place.
- Seating, planting, color, and the red truck can make the site more memorable.

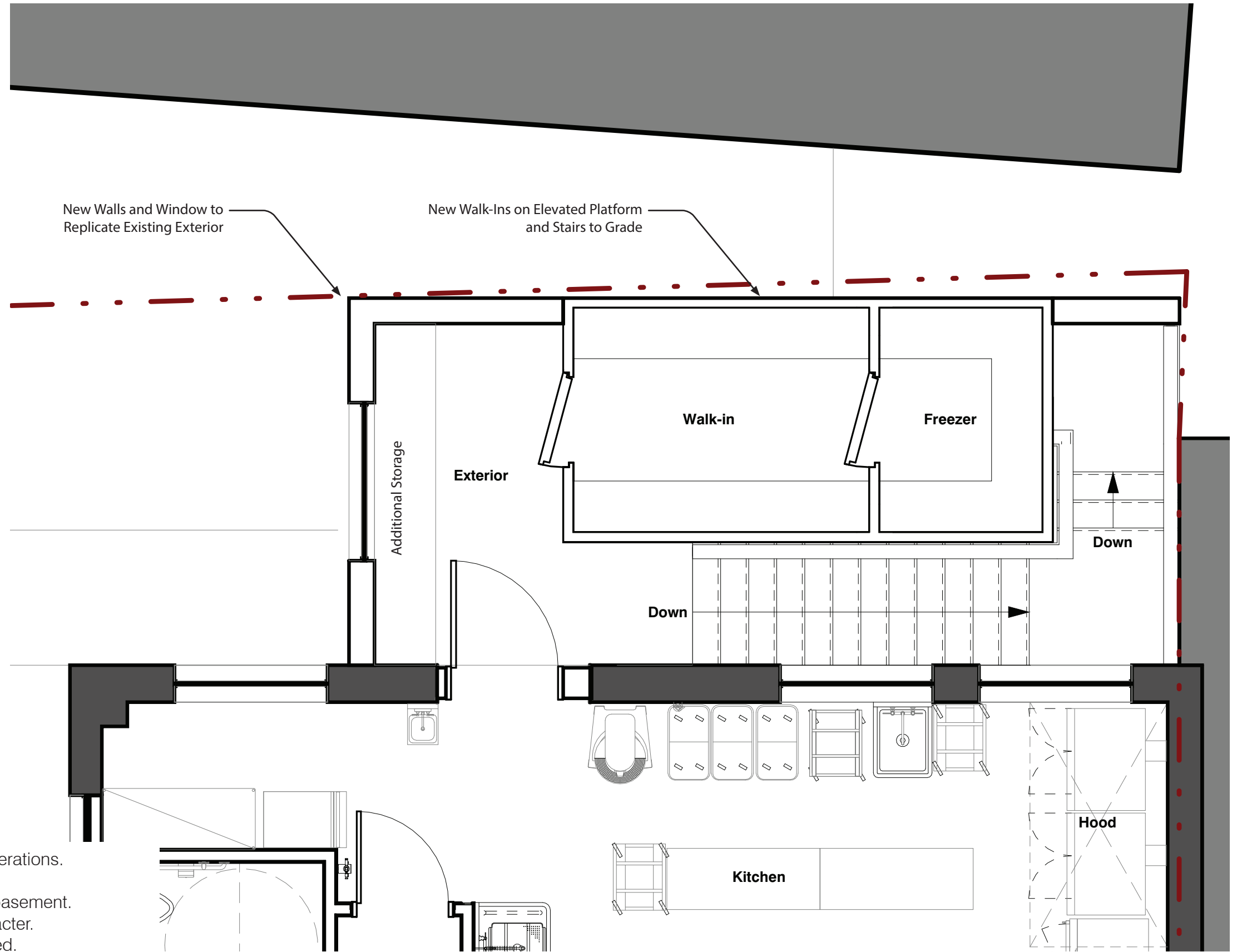


- Existing garage doors are in poor condition and perform poorly.
- Existing entry feels awkward and should be better integrated.
- Improvements must respect the historic garage-door openings.
- Seating, planting, color, and the red truck can make the site more memorable.





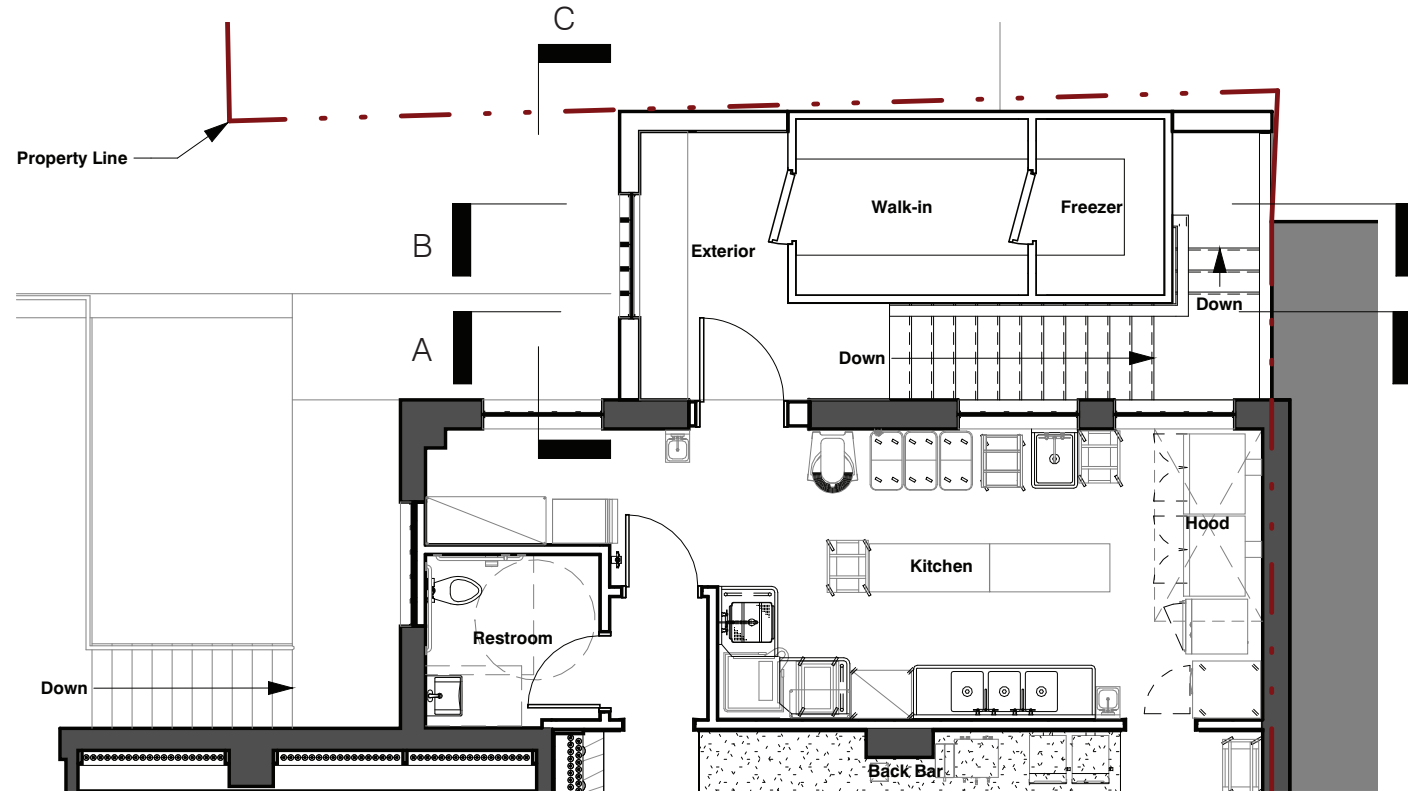
- Interior seating increased to approximately 20 seats.
- Entry sequence and circulation are clarified.
- Restroom is appropriately relocated and sized..
- Interior areas fhave hierarchy with a right-sized kitchen and support.
- Needed cold storage is added with appropriate proximity to kitchen.
- Basement storage access is made efficient through rear stair acces.



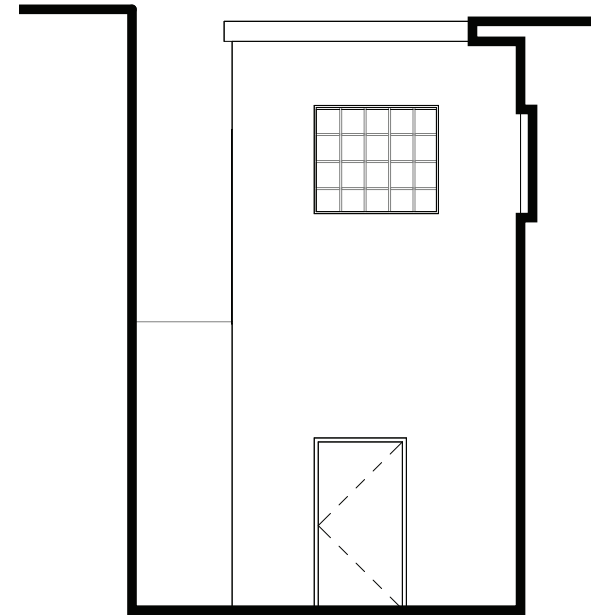
- Rear improvements support interior flow and daily operations.
- New walk-ins are located near the kitchen.
- Rear stair improves access to kitchen, storage, and basement.
- New rear walls and windows match the existing character.
- Exterior storage and service areas are better organized.
- Rear work improves function while remaining secondary to the frontage.

**Enlarged Plan**

Current Plan at Rear



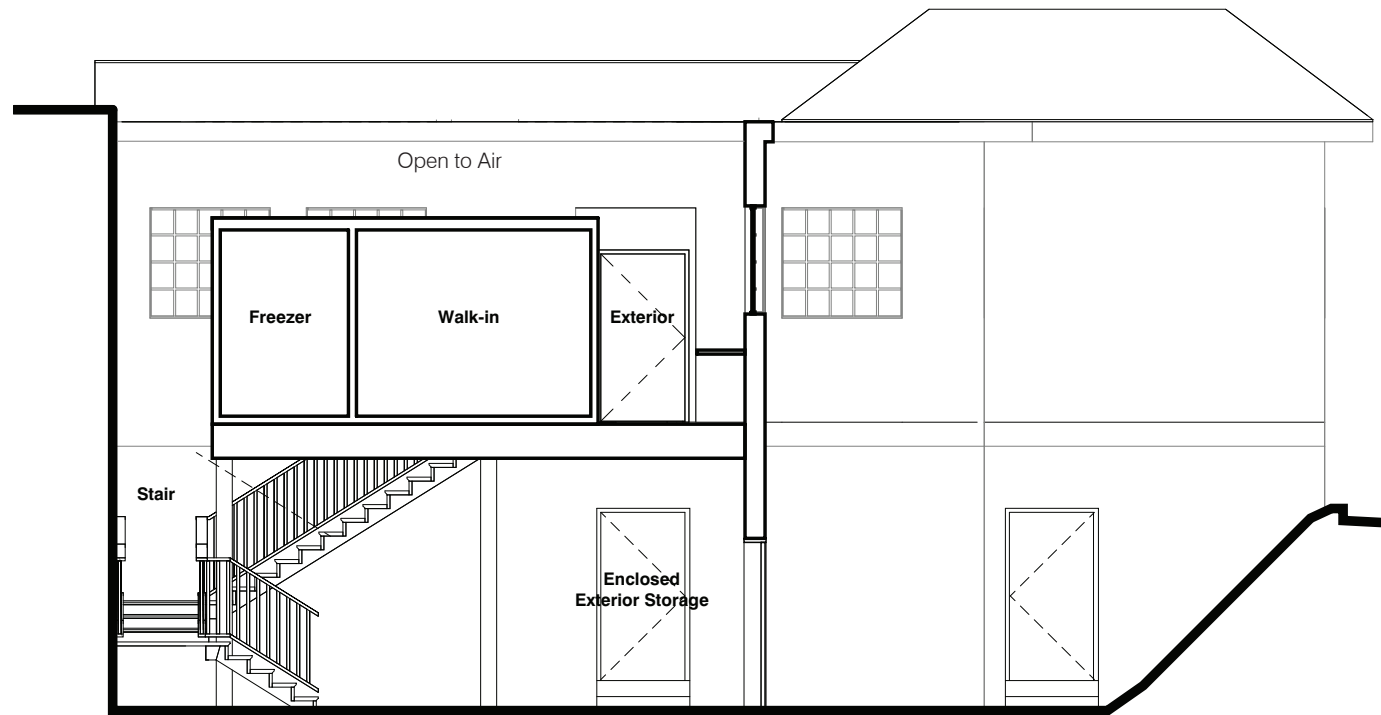
Plan



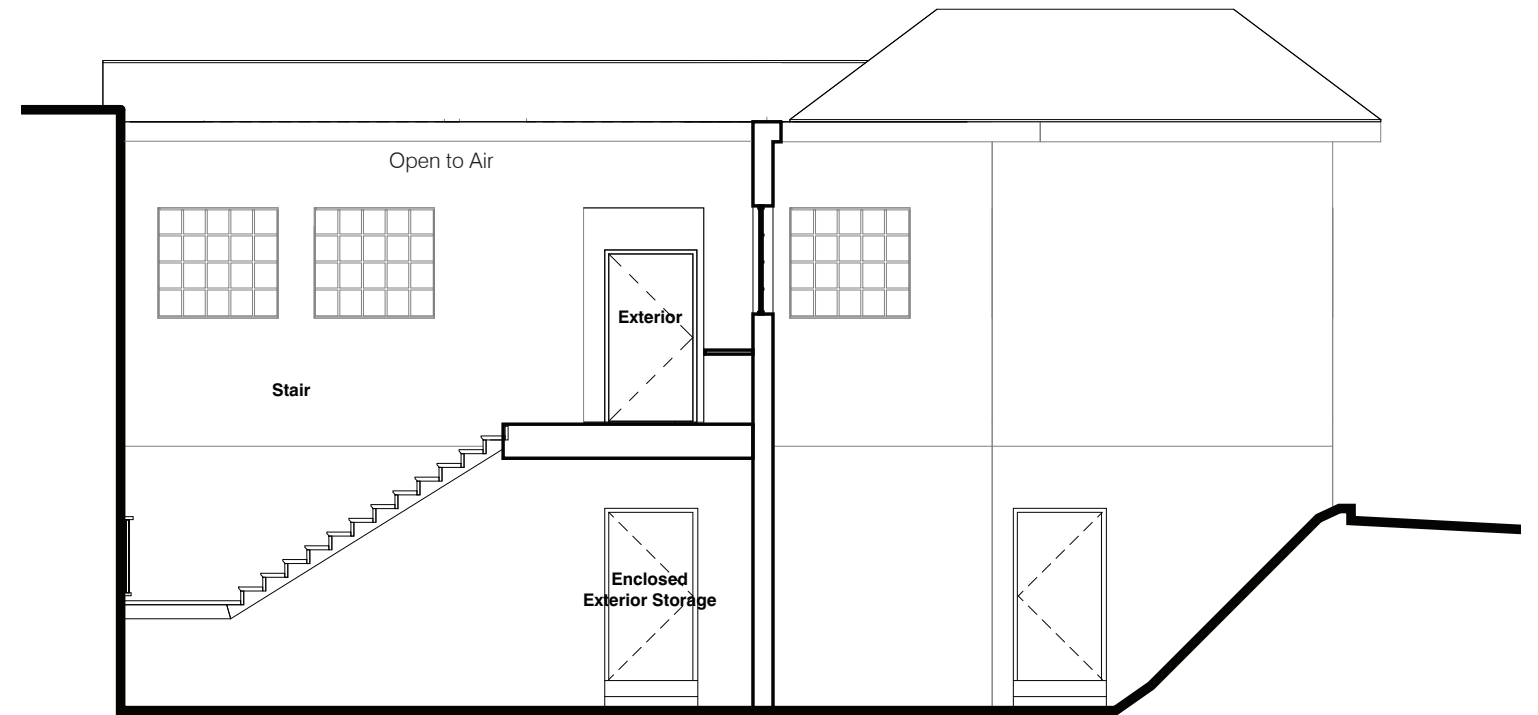
Section C



Concept Rendering at Rear with Improvements



Section B

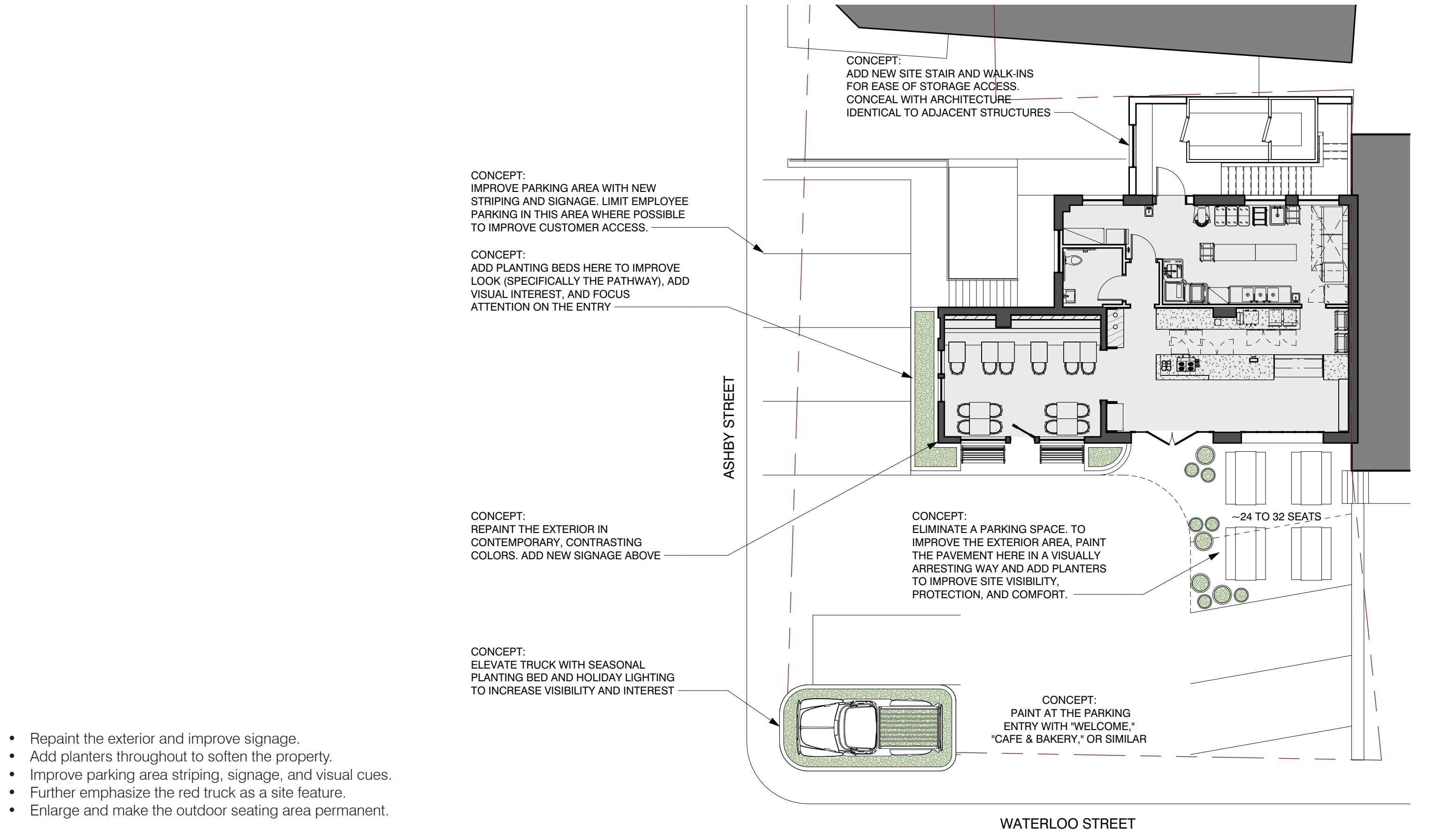


Section A

Rear Improvements

Scale: 1/8" = 1'-0"

# Red Truck Bakery



- Repaint the exterior and improve signage.
- Add planters throughout to soften the property.
- Improve parking area striping, signage, and visual cues.
- Further emphasize the red truck as a site feature.
- Enlarge and make the outdoor seating area permanent.

## Site Plan

Current Plan and Concepts



This rendering was produced in part using AI and is intended as an artist's interpretation for discussion purposes only. Minor incongruities may exist, and the image should not be read as exact existing or proposed construction conditions.

## Rendered Perspective

From the Corner of Ashby and Waterloo



# Red Truck Bakery

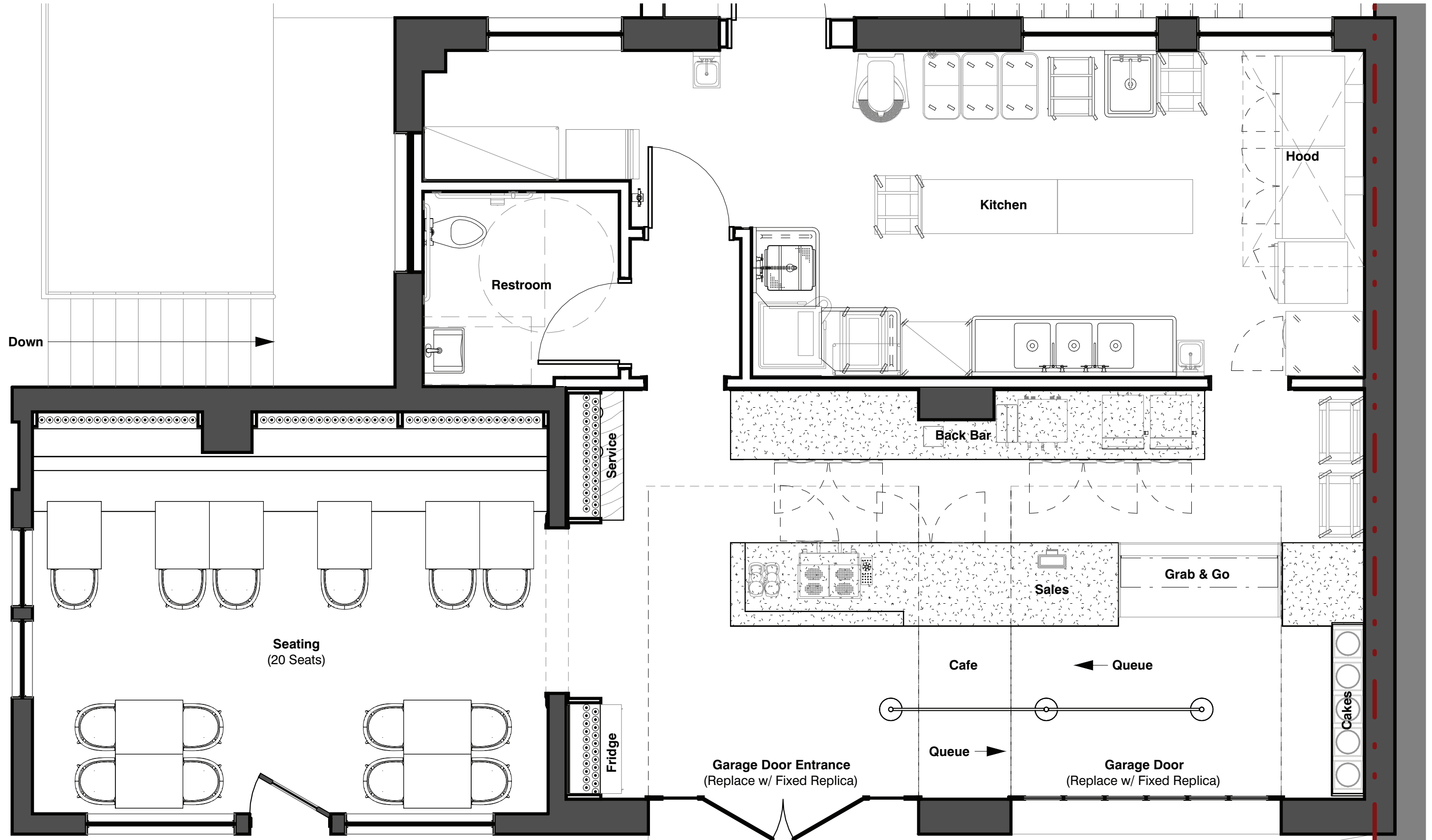
---

Proposed Interior Improvements

wood + starr

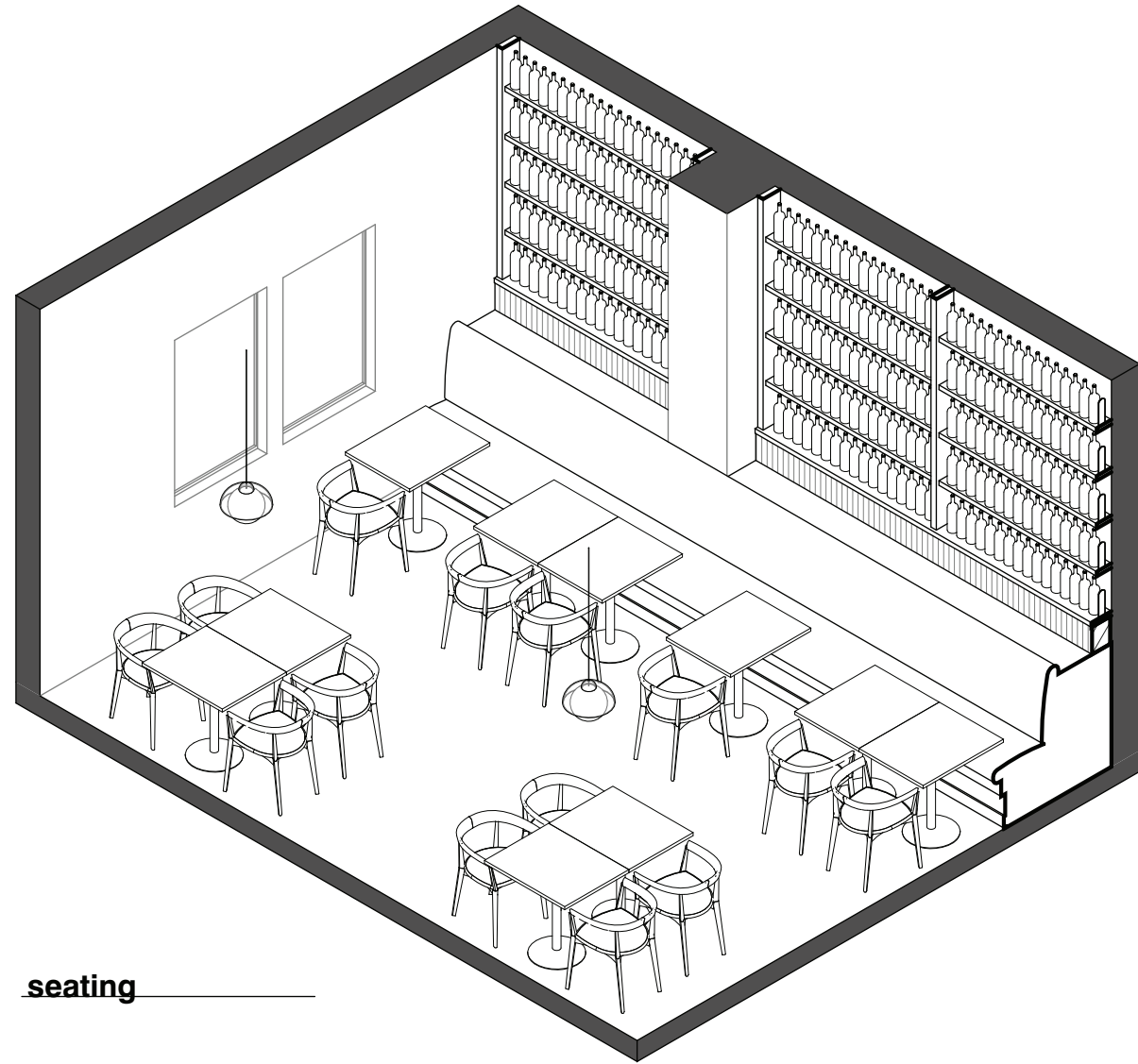
---

May 2026

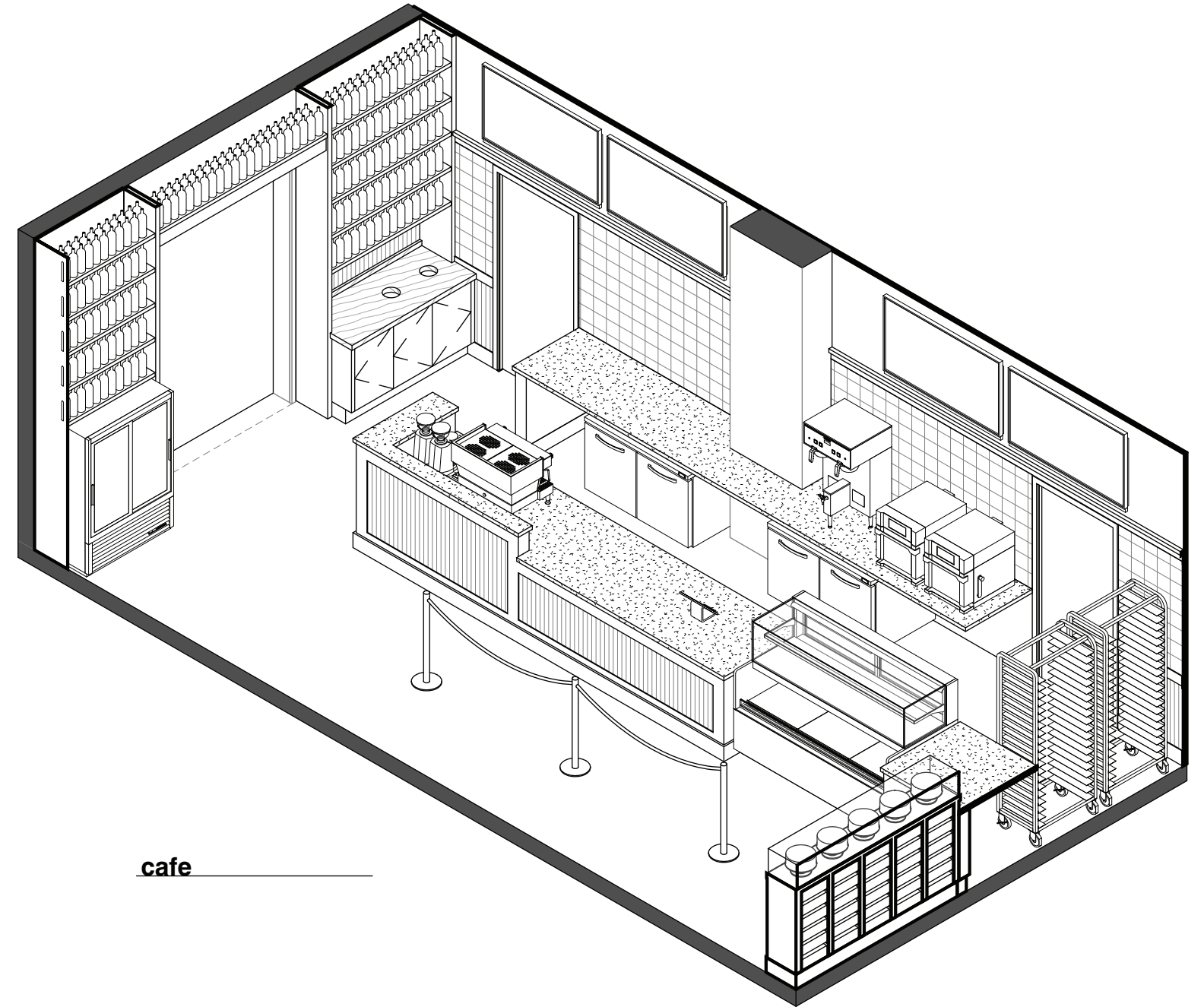


Enlarged Plan

Current Plan



**seating**



**cafe**



cafe



cafe



seating looking to cafe



cafe looking to seating



**seating**



**seating**

# Red Truck Bakery

---

Warrenton

wood + starr

---