



**Planning Commission Work Session**  
**SUP 22-6 Chick Fil A 2nd Drive-Thru**  
**February 21, 2023**

# Request

## Chick Fil A 2nd Drive-Thru

- GPIN 6984-28-8927-000
- **Applicant:** Chick Fil A
- **Property Owner:** Chick Fil A
- Representative: Katherine Roberts, PE Bohler
- **Zoning:** C – Commercial
- **Comprehensive Plan:** New Town Character District
- SUP for a 4,642 square foot building and a dual drive-thru on 1.214 acres

## Proposed Location



# Previous SUP 06-08 Approval

- May 8, 2007 SUP Approval for Restaurant with Drive Through
- Conditions of Approval
  1. A Site Development Plan submission to the Town of Warrenton consistent with the March 29, 2007 Development Plan from Bohler Engineering, PC.
  2. Ten (10), 10 foot x 20 foot drive-through stacking spaces will be provided on the site development plan; total storage length from the service window shall be 200 feet and avoid the blocking of any of the parking spaces on the site.
  3. Revise the parking spaces on the north service drive to remove the spaces in front of the building and revise parking along the service road to six (6) parallel spaces for traffic safety.
  4. Direct the drive-through traffic into the one-way travel stream of the parking lot at exit in order to extend the landscape island and screen the drive-through window/vehicles from the street.
  5. Incorporate the revised building elevations to include the use of materials as specified in the façade drawings and the use of a standing seam roof as depicted (E+H Architects, 12/15/06).



# Adjacent Uses

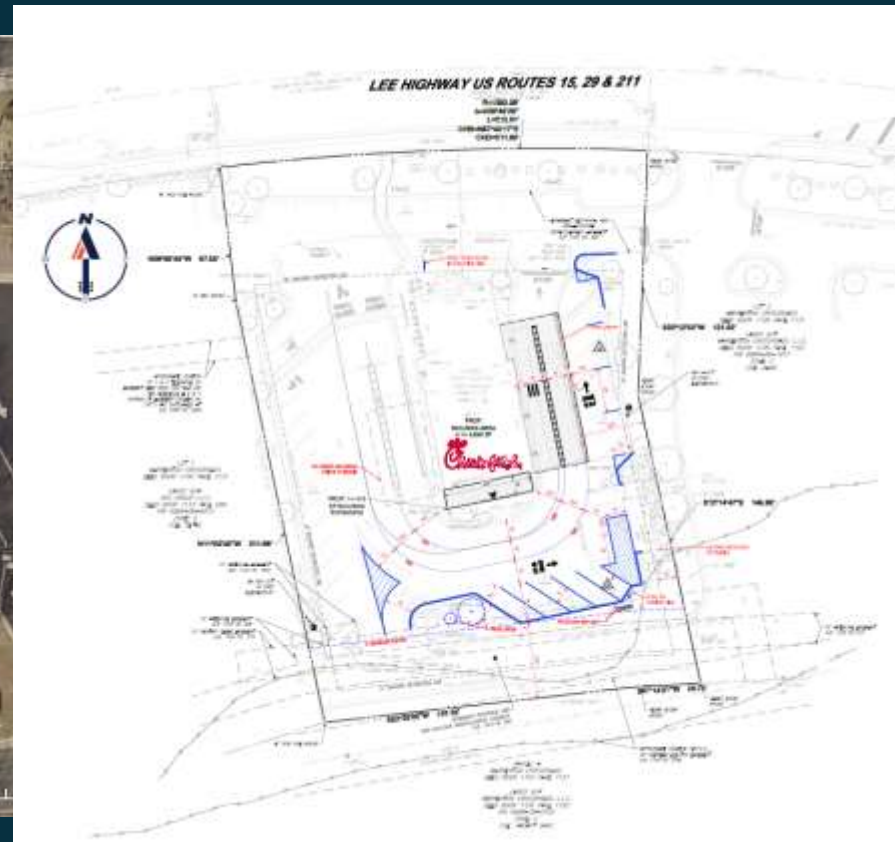
## Zoning Map



## Future Land Use



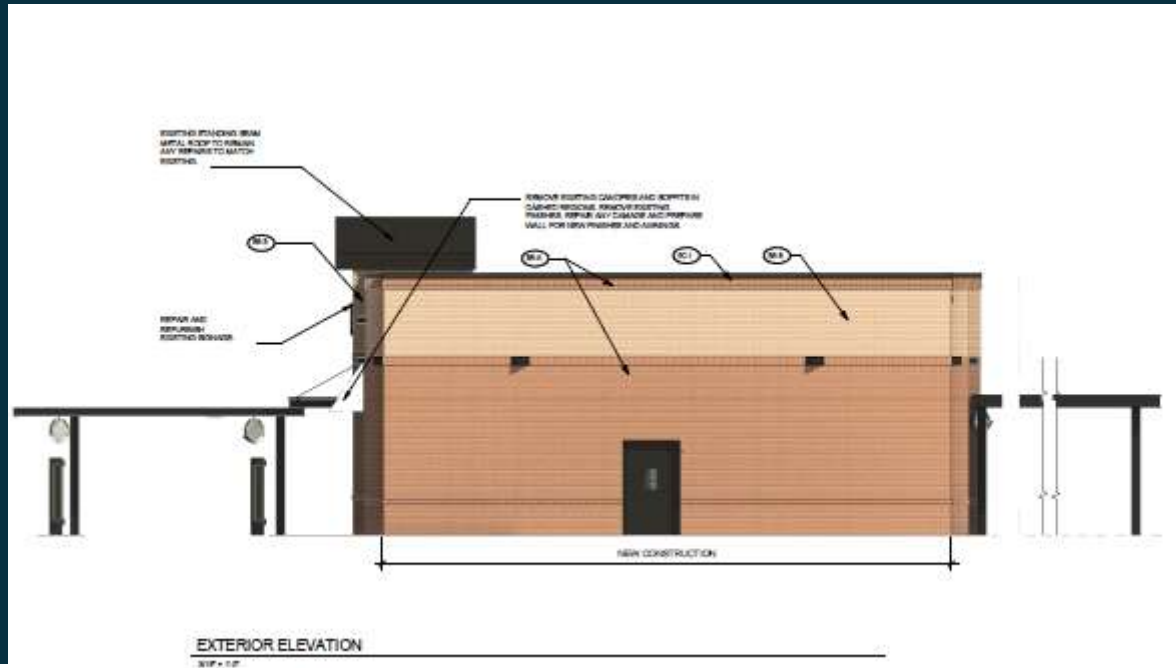
# SUP Plan



[illegible]



# Elevations



# Example Stores



Customers go through the new drive through lanes at the Chick-fil-A store in Hanover Center Friday Nov. 6, 2020 after renovations were completed this week. The inside of the Chick-fil-A remains closed to diners due to concerns over COVID-19. (KEN BLEVINS/STARNEWS) WIS



Chick-fil-A in Beckley is back open for business. (wvva)

By Annie Moore



The Chick-fil-A at 1579 Fruitville Pike has indoor seating for 130 and features a drive-thru with two lanes for ordering

CHAD LIMBLE | STAFF WRITER

BY TIM ATEN JANUARY 30, 2023 PHOTO CREDIT:TIM ATEN





**LEE HIGHWAY US ROUTES 15, 29 & 211**

**DELIVERY TRUCK TURN**

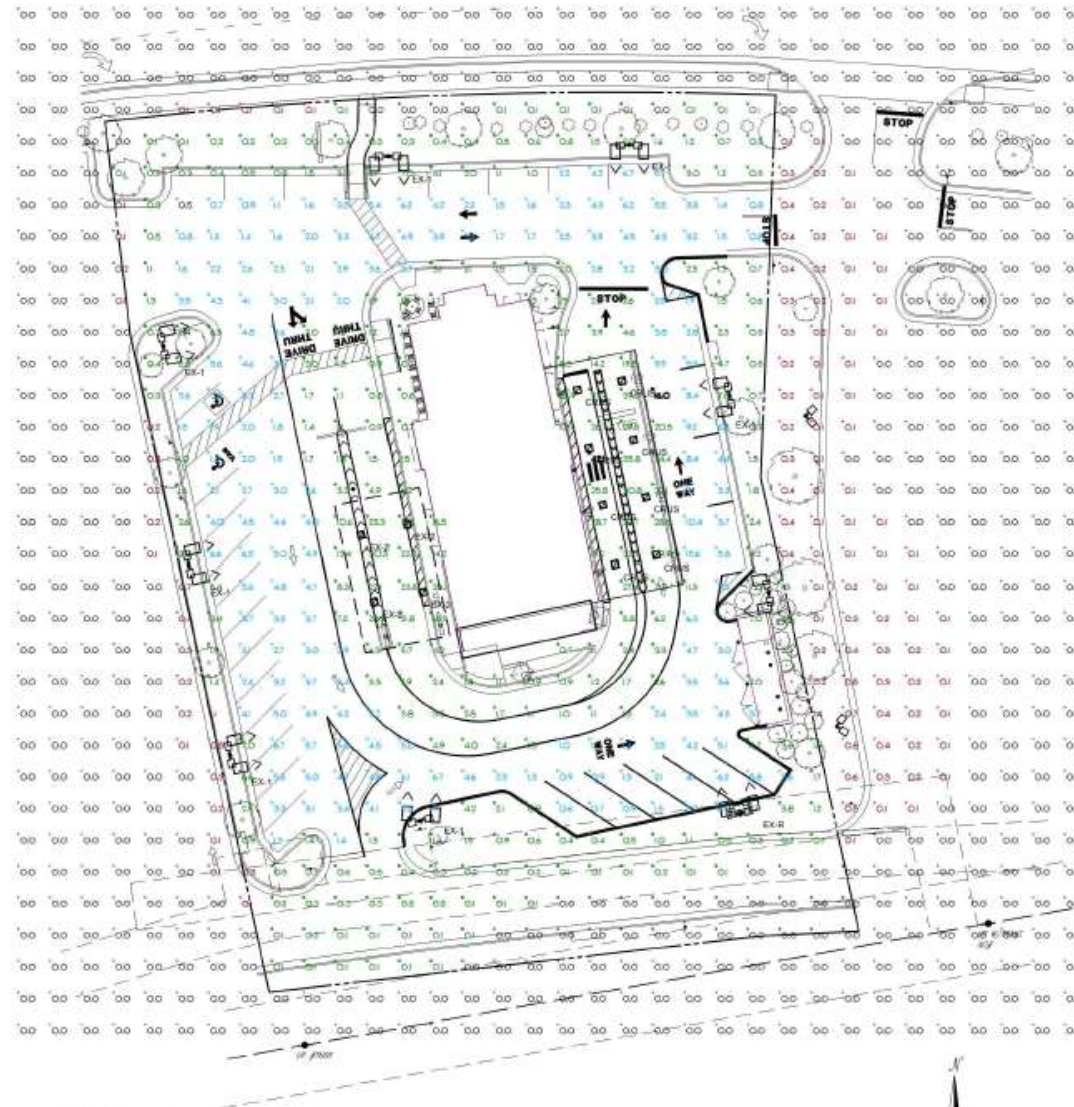
**FIRE TRUCK TURN**

**CHICK-FIL-A**

**HAYWARD CROSSROADS LLC**

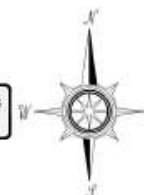
**1000 1100 1100 1100**

# Photometric Plan



**PHOTOMETRIC PLAN**

THIS PLAN TO BE UTILIZED FOR LIGHTING PURPOSES ONLY



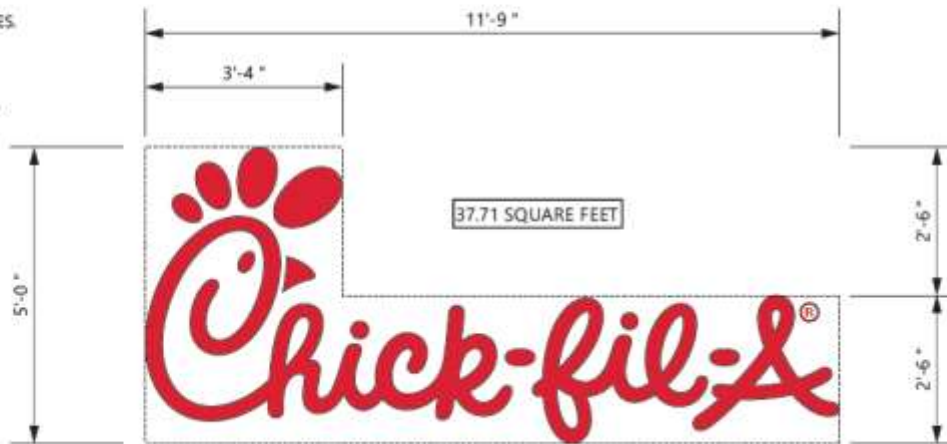
# Signage Proposal

## SPECIFICATIONS

**CHICK-FIL-A SCRIPT LETTERS**  
LETTERS ARE LED-ILLUMINATED  
CHANNEL LETTERS MOUNTED  
ON ALUMINUM SURFACE OF BUILDING  
WITH TRANSFORMERS REMOTELY  
LOCATED BEHIND THE WALL IN  
UL APPROVED TRANSFORMER BOXES.  
FACES ARE 3/16" ACRYLIC  
RETURNS ARE .063 ALUMINUM  
BACKS ARE .080 ALUMINUM  
ALL RETURNS ARE ARC-WELDED TO  
LETTER BACKS

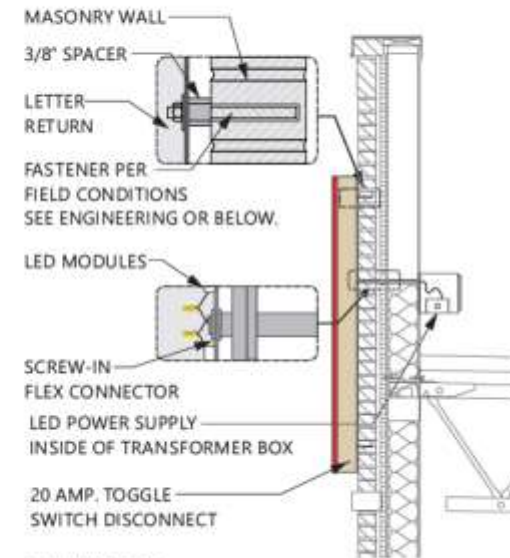
**CHANNEL LETTER FACES**  
2793 RED ACRYLIC  
TRIMCAP RETAINER-  
1" RED JEWELITE TRIMCAP

ALUMINUM RETURNS  
PAINTED TO MATCH  
SHERWIN WILLIAMS  
SW6108 LATTE



**ELEVATION**

SCALE - 1/2" = 1'-0"



**FASTENER NOTE:**  
USE 18-8 STAINLESS STEEL BOLTS W/ SPACERS THRU EIFS.  
EXPANSION BOLTS IN CONCRETE OR BRICK WALLS.  
TOGGLE BOLTS IN CONCRETE BLOCK OR PANEL WALLS.  
TEK SCREWS IN METAL STUDS. LAG-BOLTS IN WOOD STUDS.  
ALL THREAD BOLTS WITH BLOCKING BETWEEN STUDS.

## CROSS-SECTION

SCALE - 1/2" = 1'-0"

	<b>CHANNEL LETTERS (RED ILLUMINATION)</b>	<b>WET LOCATION</b>
<p>LED'S JULY 2015 UL LISTED POWER SUPPLY UL-125-05-60 POWER SUPPLY</p>		
<p>THIS SIGN IS INTENDED TO BE INSTALLED IN ACCORDANCE WITH REQUIREMENTS OF ARTICLE 680 OF THE NATIONAL ELECTRICAL CODE AND/OR APPLICABLE LOCAL CODES. THIS INCLUDES PROPER WIRING AND BONDING OF THE SIGN.</p>		



# Considerations

- Transportation & Pedestrian Access
- Internal Circulation
- Elevations
- Landscaping
- Lighting
- Signage



**Planning Commission Work Session**  
**SUP 22-6 Chick Fil A 2nd Drive-Thru**  
**February 21, 2023**