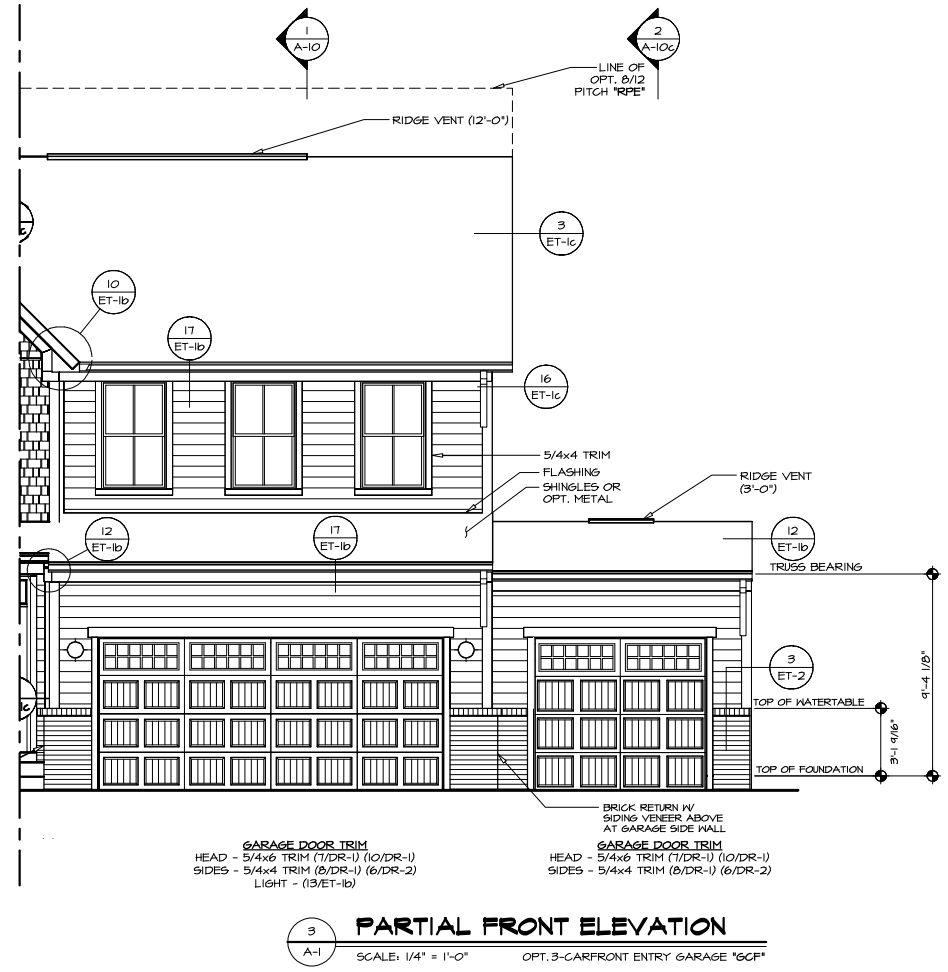
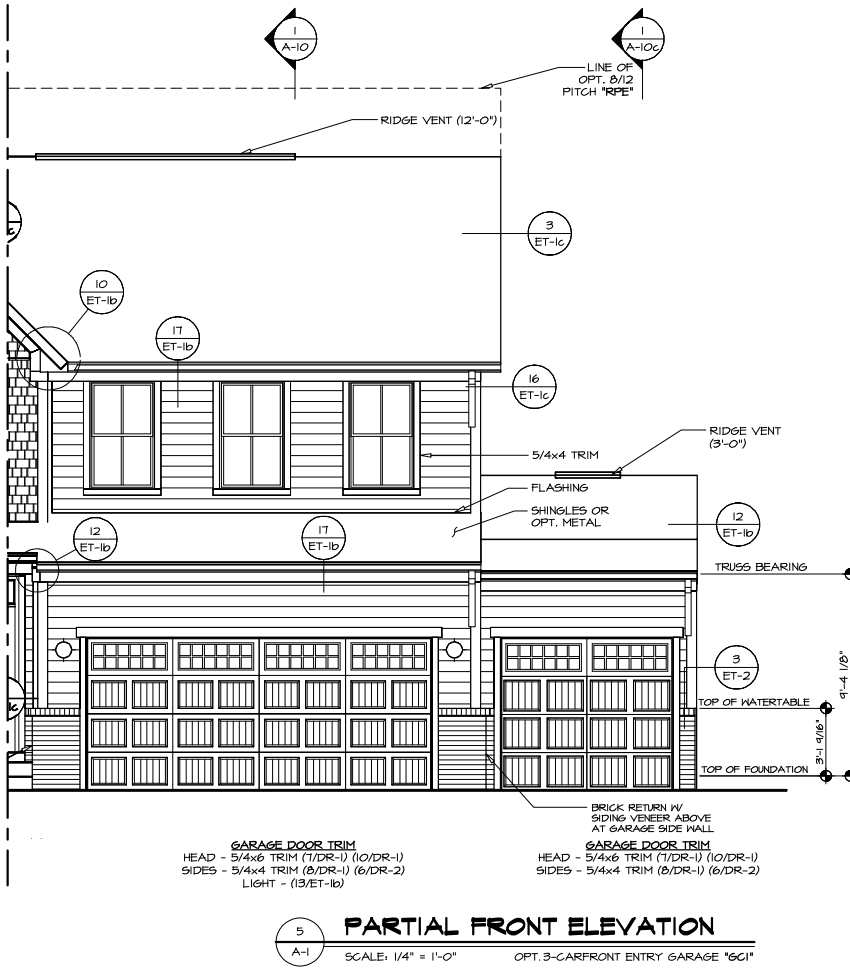
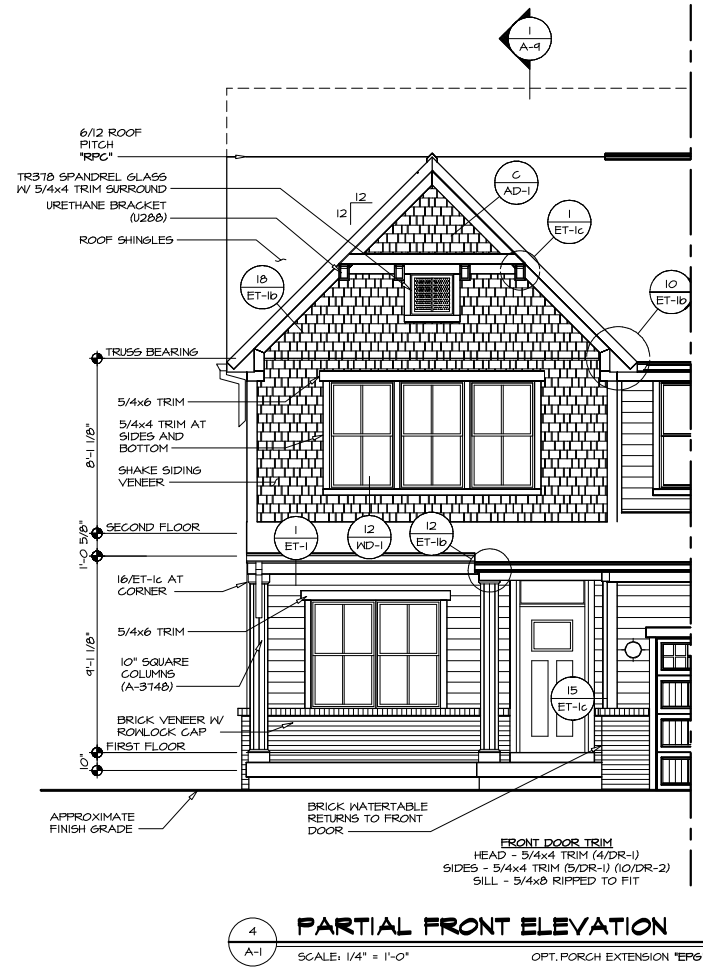
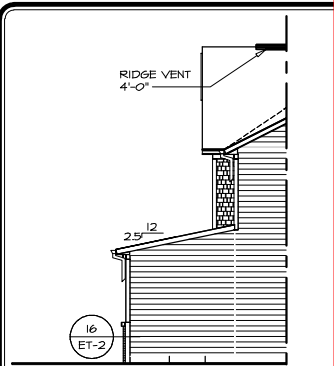


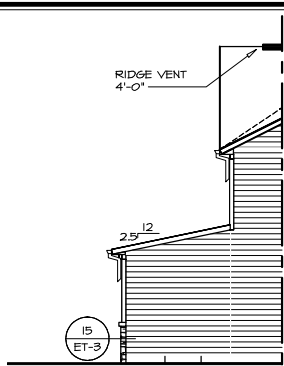
NOTE:  
GARAGE DOOR GLASS  
DESIGN MAY VARY BY  
MANUFACTURER



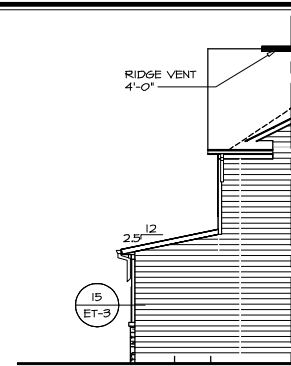
REMARKS	
REV. NO.	DATE
<p>NVR, Inc. expressly reserves its copyright and other property rights in these plans. These plans are not to be reproduced, stored in a retrieval system, or transmitted in any form or by any means, electronic, mechanical, photocopying, recording, or by any information storage and retrieval system, without the prior written consent of NVR, Inc.</p>	
<p><b>NVR</b></p> <p>NVR, Inc. 3285 Westview Drive, Suite 100 Frederick, MD 21703</p>	
<p>SHEET NO. <b>A-1</b></p> <p>MODEL <b>COLUMBIA</b></p> <p>VERSION 01</p> <p>RELEASE NO. -----</p> <p>DRAWN BY ARV</p> <p>DATE: 8/16/17</p> <p>OPTION ELL</p>	<p>13</p>



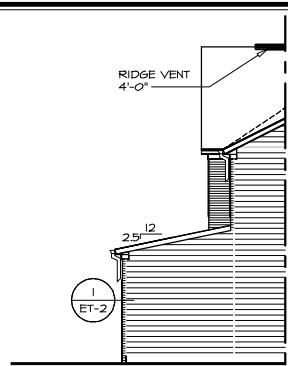
**PARTIAL RIGHT ELEVATION**  
SCALE: 1/8" = 1'-0" OPT. ELEV. L "ELL"  
2-CAR GARAGE FRONT ENTRY "GCB"



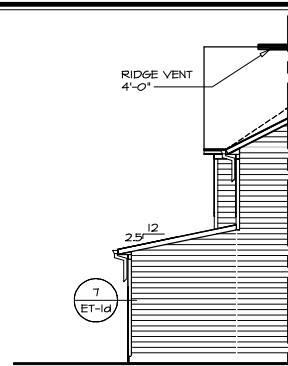
**PARTIAL RIGHT ELEVATION**  
SCALE: 1/8" = 1'-0" OPT. ELEV. L "ELL"  
2-CAR GARAGE FRONT ENTRY "GCB"



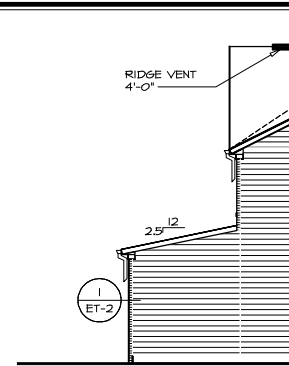
**PARTIAL RIGHT ELEVATION**  
SCALE: 1/8" = 1'-0" OPT. ELEV. G "ELG"  
2-CAR GARAGE FRONT ENTRY "GCB"



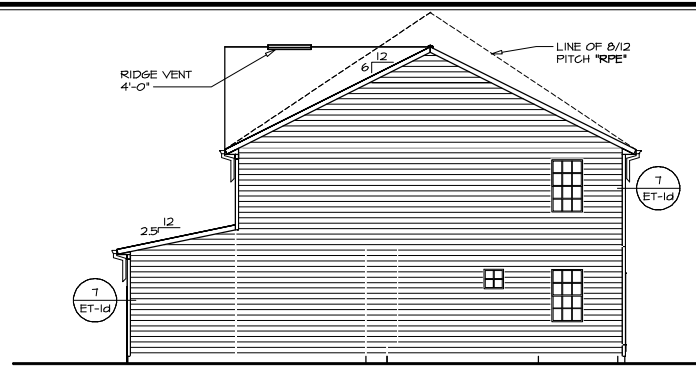
**PARTIAL RIGHT ELEVATION**  
SCALE: 1/8" = 1'-0" OPT. ELEV. B "ELB"  
OPT. FULL BRICK VENEER FRONT "EVA"  
2-CAR GARAGE FRONT ENTRY "GCB"



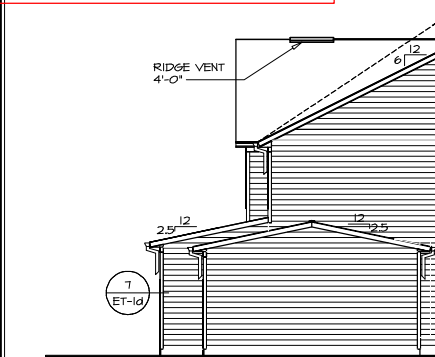
**PARTIAL RIGHT ELEVATION**  
SCALE: 1/8" = 1'-0" OPT. ELEV. B "ELB"  
SIDING VENEER FRONT "EVA"  
2-CAR GARAGE FRONT ENTRY "GCB"



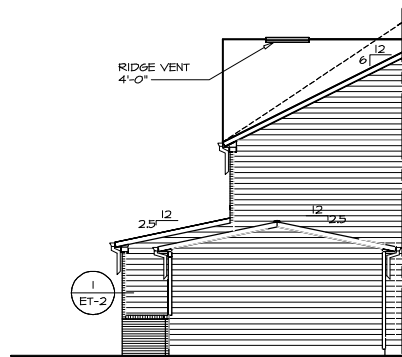
**PARTIAL RIGHT ELEVATION**  
SCALE: 1/8" = 1'-0" ELEV. A "ELA"  
OPT. FULL BRICK VENEER FRONT "EVA"  
2-CAR GARAGE FRONT ENTRY "GCB"



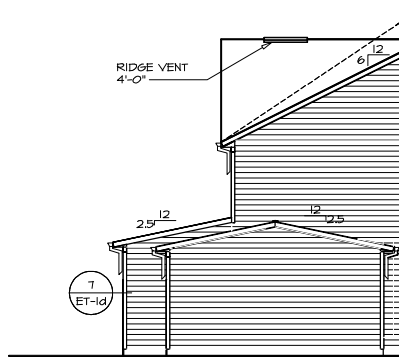
**RIGHT ELEVATION**  
SCALE: 1/8" = 1'-0" ELEV. A "ELA"  
SIDING VENEER FRONT "EVA"  
2-CAR GARAGE FRONT ENTRY "GCB"



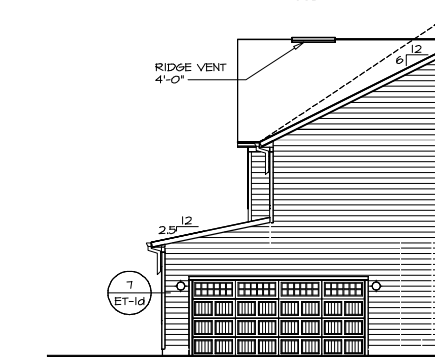
**PARTIAL RIGHT ELEVATION**  
SCALE: 1/8" = 1'-0" OPT. ELEV. B "ELB"  
SIDING VENEER FRONT "EVA"  
OPT. 3-CAR GARAGE FRONT ENTRY "GCF"



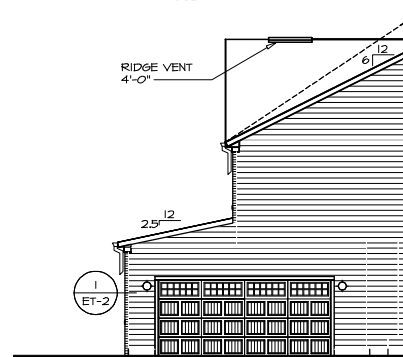
**PARTIAL RIGHT ELEVATION**  
SCALE: 1/8" = 1'-0" ELEV. A "ELA"  
OPT. FULL BRICK VENEER FRONT "EVA"  
OPT. 3-CAR GARAGE FRONT ENTRY "GCF"



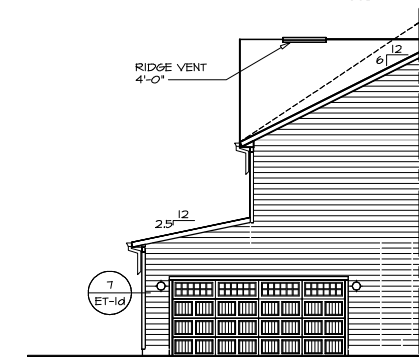
**PARTIAL RIGHT ELEVATION**  
SCALE: 1/8" = 1'-0" ELEV. A "ELA"  
SIDING VENEER FRONT "EVA"  
OPT. 3-CAR GARAGE FRONT ENTRY "GCF"



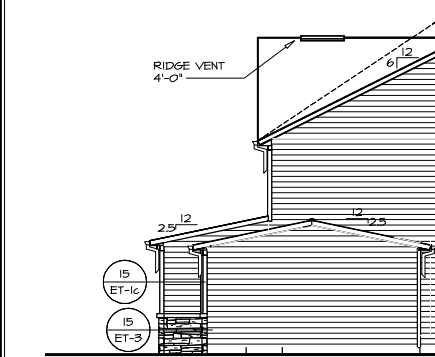
**PARTIAL RIGHT ELEVATION**  
SCALE: 1/8" = 1'-0" OPT. ELEV. B "ELB"  
SIDING VENEER FRONT "EVA"  
OPT. 2-CAR GARAGE SIDE ENTRY "GCC"



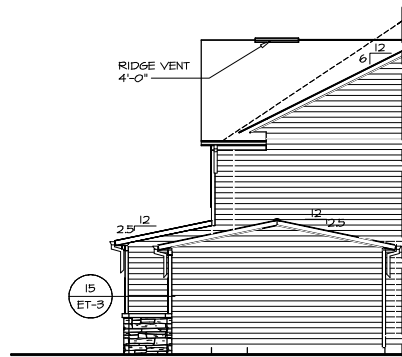
**PARTIAL RIGHT ELEVATION**  
SCALE: 1/8" = 1'-0" ELEV. A "ELA"  
OPT. FULL BRICK VENEER FRONT "EVA"  
OPT. 2-CAR GARAGE SIDE ENTRY "GCC"



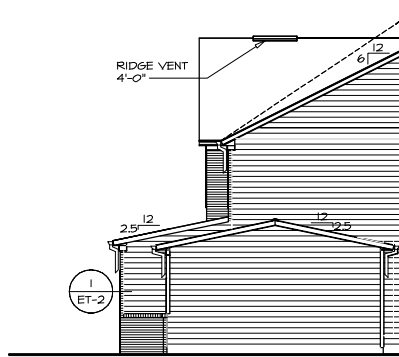
**PARTIAL RIGHT ELEVATION**  
SCALE: 1/8" = 1'-0" ELEV. A "ELA"  
SIDING VENEER FRONT "EVA"  
OPT. 2-CAR GARAGE SIDE ENTRY "GCC"



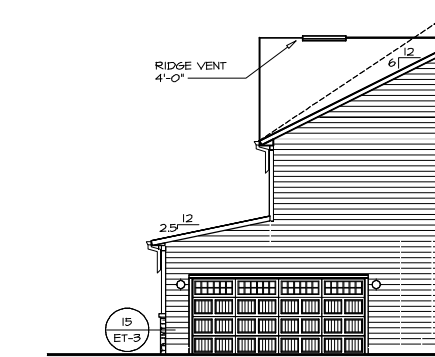
**PARTIAL RIGHT ELEVATION**  
SCALE: 1/8" = 1'-0" OPT. ELEV. K "ELK"  
OPT. 3-CAR GARAGE FRONT ENTRY "GCF"



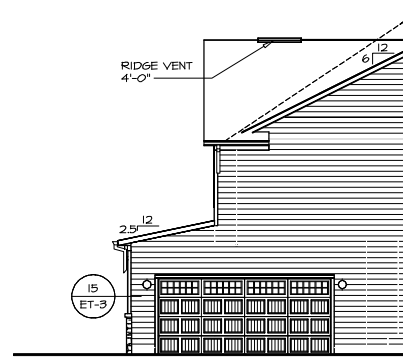
**PARTIAL RIGHT ELEVATION**  
SCALE: 1/8" = 1'-0" OPT. ELEV. G "ELG"  
OPT. 3-CAR GARAGE FRONT ENTRY "GCF"



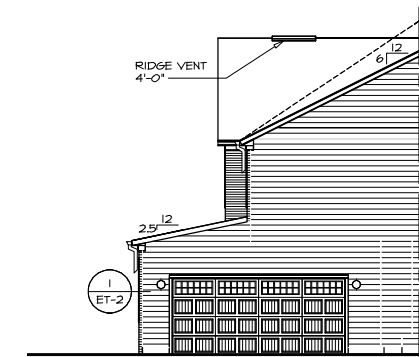
**PARTIAL RIGHT ELEVATION**  
SCALE: 1/8" = 1'-0" OPT. ELEV. B "ELB"  
OPT. FULL BRICK VENEER FRONT "EVA"  
OPT. 3-CAR GARAGE FRONT ENTRY "GCF"



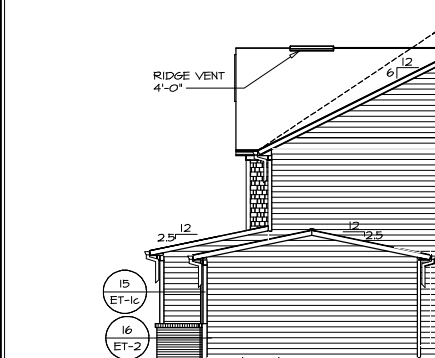
**PARTIAL RIGHT ELEVATION**  
SCALE: 1/8" = 1'-0" OPT. ELEV. K "ELK"  
OPT. 2-CAR GARAGE SIDE ENTRY "GCC"



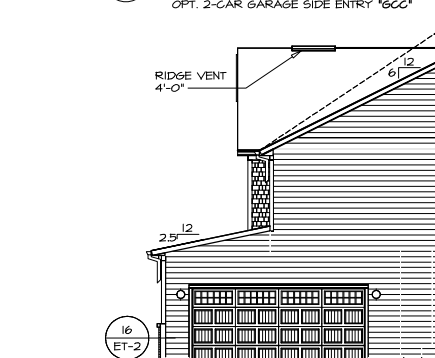
**PARTIAL RIGHT ELEVATION**  
SCALE: 1/8" = 1'-0" OPT. ELEV. C "ELC"  
OPT. 2-CAR GARAGE SIDE ENTRY "GCC"



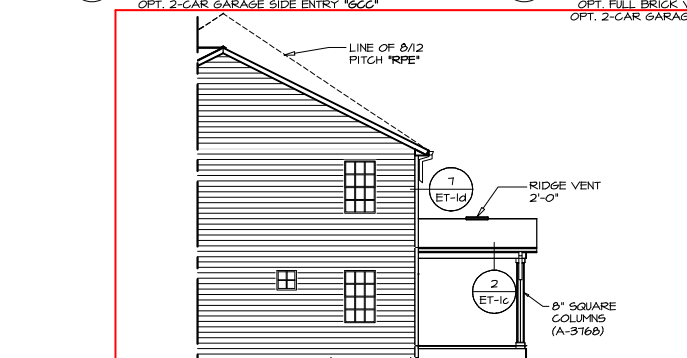
**PARTIAL RIGHT ELEVATION**  
SCALE: 1/8" = 1'-0" OPT. ELEV. B "ELB"  
OPT. FULL BRICK VENEER FRONT "EVA"  
OPT. 2-CAR GARAGE SIDE ENTRY "GCC"



**PARTIAL RIGHT ELEVATION**  
SCALE: 1/8" = 1'-0" OPT. ELEV. L "ELL"  
OPT. 3-CAR GARAGE FRONT ENTRY "GCF"



**PARTIAL RIGHT ELEVATION**  
SCALE: 1/8" = 1'-0" OPT. ELEV. L "ELL"  
OPT. 2-CAR GARAGE SIDE ENTRY "GCC"



**PARTIAL RIGHT ELEVATION**  
SCALE: 1/8" = 1'-0" OPT. REAR COVERED PORCH "EPE"  
LOCAL EXTERIOR DECK RAILINGS "EK5"

**NOTE:**  
GARAGE DOOR GLASS  
DESIGN MAY VARY BY  
MANUFACTURER

REMARKS

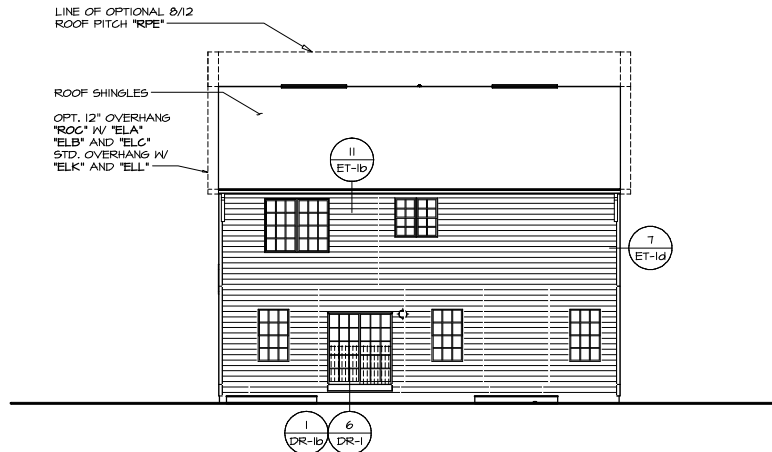
REV. NO. DATE

NVR, Inc., expressly reserves all  
copyright and other property rights  
in these plans. These plans are not  
to be reproduced, stored in a  
retrieval system, or transmitted in  
any form or by any means, without  
the prior written consent of NVR, Inc.

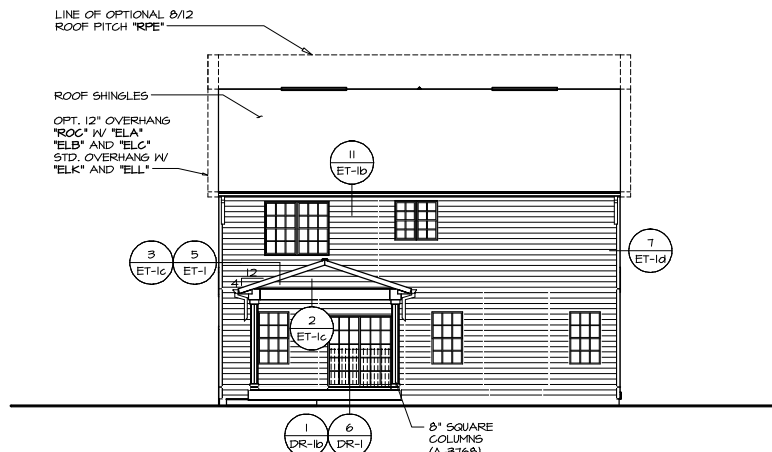
**NVR**  
NVR, Inc.  
3285 Westview Drive, Suite 100  
Frederick, MD 21703

SHEET NO. CLM00  
VERSION 01  
RELEASE NO. 0000  
DRAWN BY ARY  
DATE: 8/21/17  
OPTION

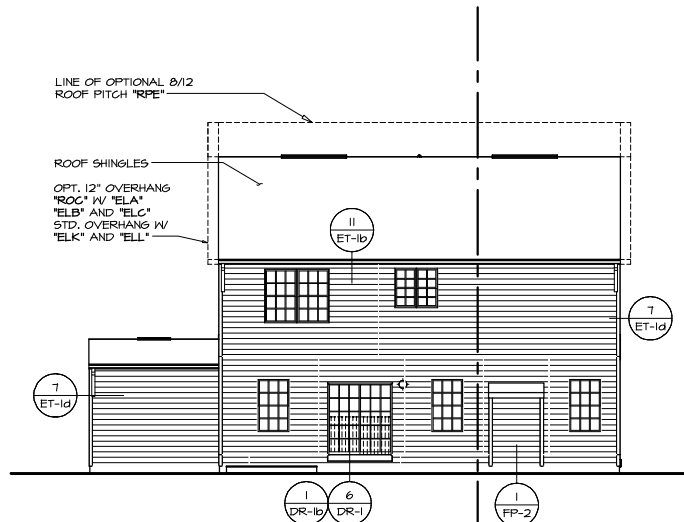
**COLUMBIA**  
DRAWING TITLE  
RIGHT SIDE ELEVATION  
OPTION DESCRIPTION  
14



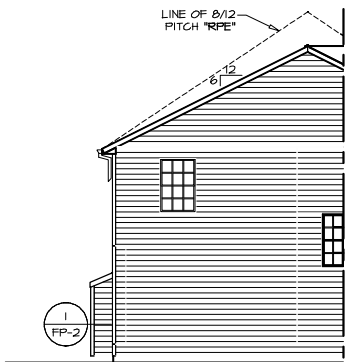
1 REAR ELEVATION  
SCALE: 1/8" = 1'-0"



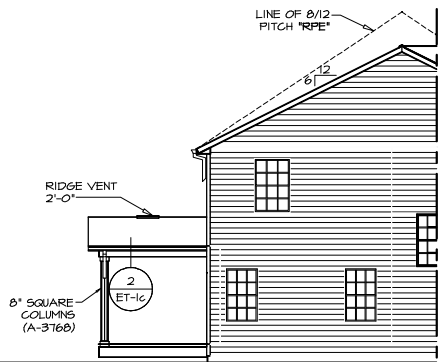
2 REAR ELEVATION  
SCALE: 1/8" = 1'-0"



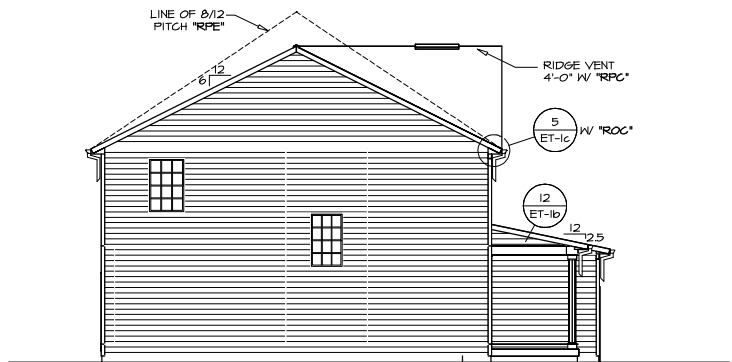
3 REAR ELEVATION  
SCALE: 1/8" = 1'-0"



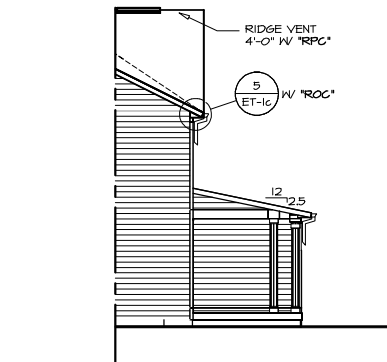
12 PARTIAL LEFT ELEVATION  
SCALE: 1/8" = 1'-0"



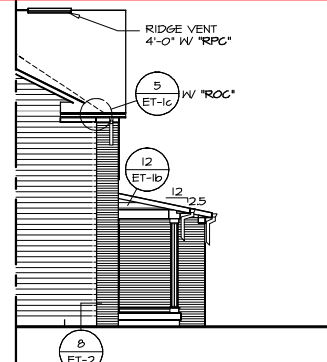
13 PARTIAL LEFT ELEVATION  
SCALE: 1/8" = 1'-0"



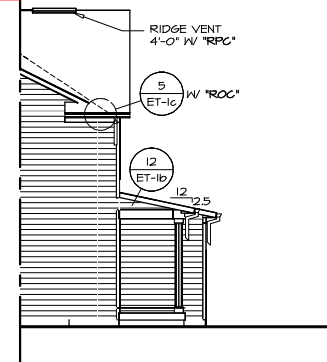
1 LEFT ELEVATION  
SCALE: 1/8" = 1'-0"



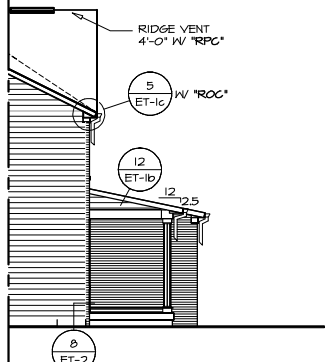
11 PARTIAL LEFT ELEVATION  
SCALE: 1/8" = 1'-0"



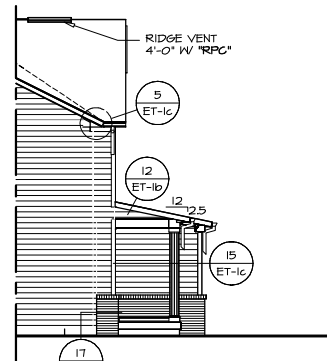
4 PARTIAL LEFT ELEVATION  
SCALE: 1/8" = 1'-0"



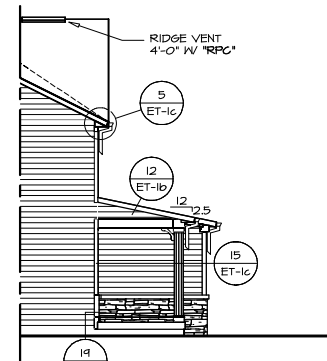
3 PARTIAL LEFT ELEVATION  
SCALE: 1/8" = 1'-0"



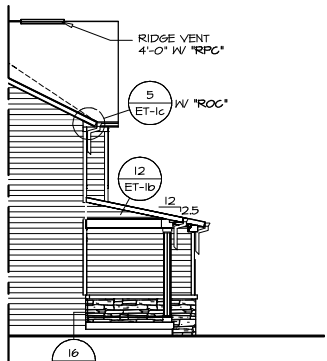
2 PARTIAL LEFT ELEVATION  
SCALE: 1/8" = 1'-0"



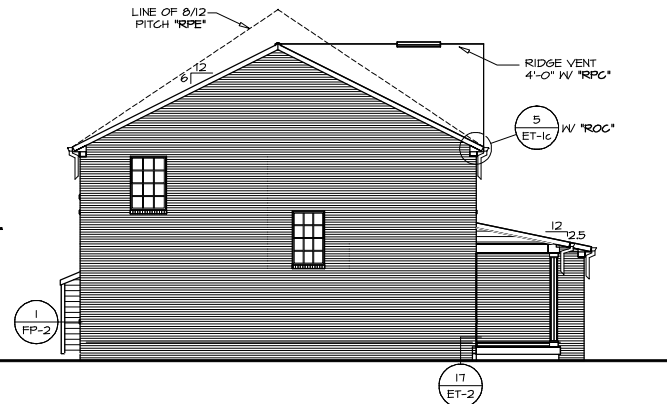
7 PARTIAL LEFT ELEVATION  
SCALE: 1/8" = 1'-0"



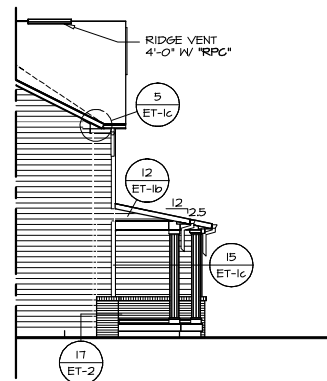
6 PARTIAL LEFT ELEVATION  
SCALE: 1/8" = 1'-0"



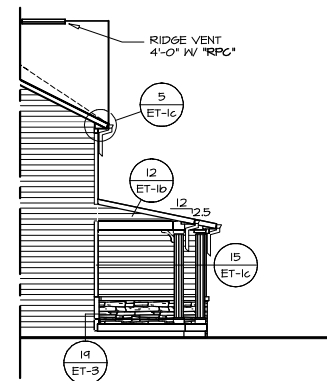
5 PARTIAL LEFT ELEVATION  
SCALE: 1/8" = 1'-0"



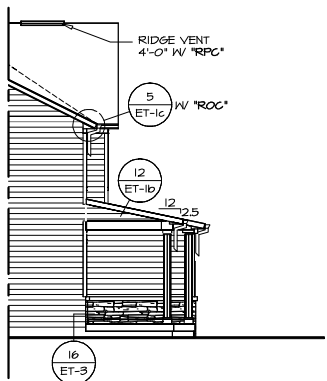
14 PARTIAL LEFT ELEVATION  
SCALE: 1/8" = 1'-0"



10 PARTIAL LEFT ELEVATION  
SCALE: 1/8" = 1'-0"



9 PARTIAL LEFT ELEVATION  
SCALE: 1/8" = 1'-0"



8 PARTIAL LEFT ELEVATION  
SCALE: 1/8" = 1'-0"

REMARKS

REV. NO. DATE

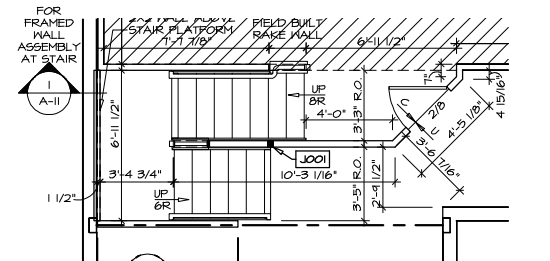
NVR, Inc. expressly reserves its copyright and other property rights in these plans. These plans are not to be reproduced, stored in a retrieval system, or used in any form or by any means, electronic, mechanical, photocopying, recording, or by any information storage and retrieval system, without the prior written consent of NVR, Inc.

**NVR**  
NVR, Inc.  
5285 Westview Drive, Suite 100  
Frederick, MD 21703

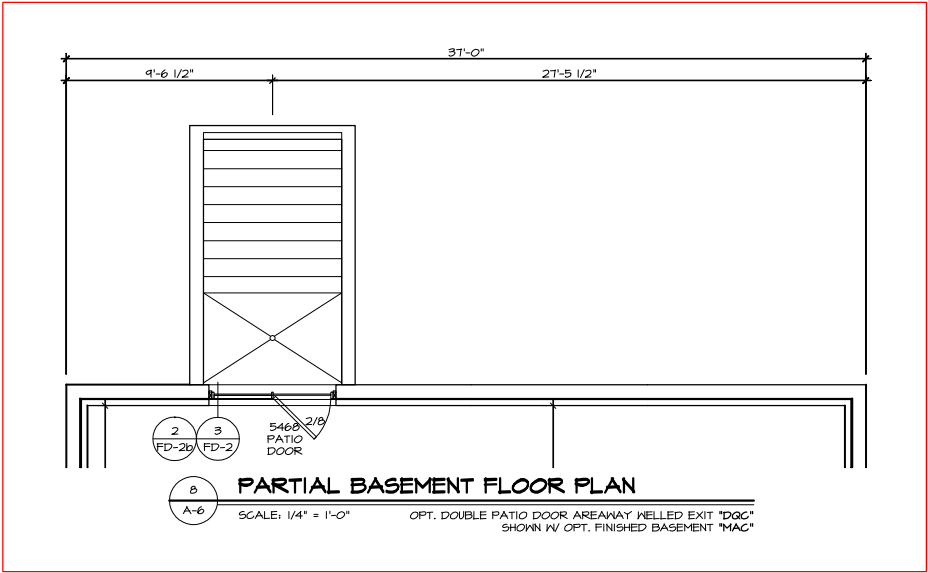
SHEET NO. COLUMBIA  
VERSION 01  
RELEASE NO. 000000  
DRAWN BY ARV  
DATE: 8/2/17  
OPTION DESCRIPTION

LEFT SIDE ELEVATION REAR ELEVATION  
REAR ELEVATIONS  
OPTION DESCRIPTION

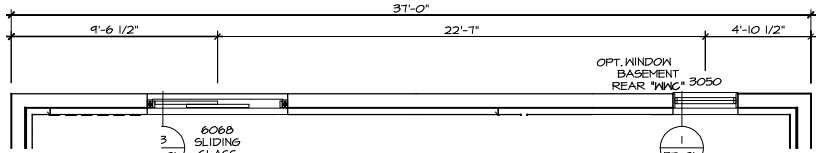
A-2b  
16



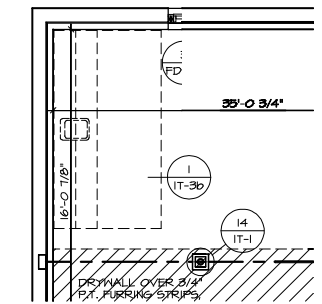
**PARTIAL BASEMENT FLOOR PLAN**  
SCALE: 1/4" = 1'-0"  
OPT. PINE STAIR W/ TURNED WHITE BALUSTERS "SSB"  
OR OPT. OAK STAIR W/ METAL BALUSTERS "SMT"  
OR OPT. CARPETED STAIR W/ SQUARE WHITE BALUSTERS "SNR"  
OR OPT. OAK STAIR W/ METAL BALUSTERS "SNS"



**PARTIAL BASEMENT FLOOR PLAN**  
SCALE: 1/4" = 1'-0"  
OPT. DOUBLE PATIO DOOR AREAWAY WELLED EXIT "DGC"  
SHOWN W/ OPT. FINISHED BASEMENT "MAC"



**PARTIAL BASEMENT FLOOR PLAN**  
SCALE: 1/4" = 1'-0"  
OPT. SLIDING GLASS DOOR WALKOUT "DGC"  
SHOWN W/ OPT. FINISHED BASEMENT "MAC"



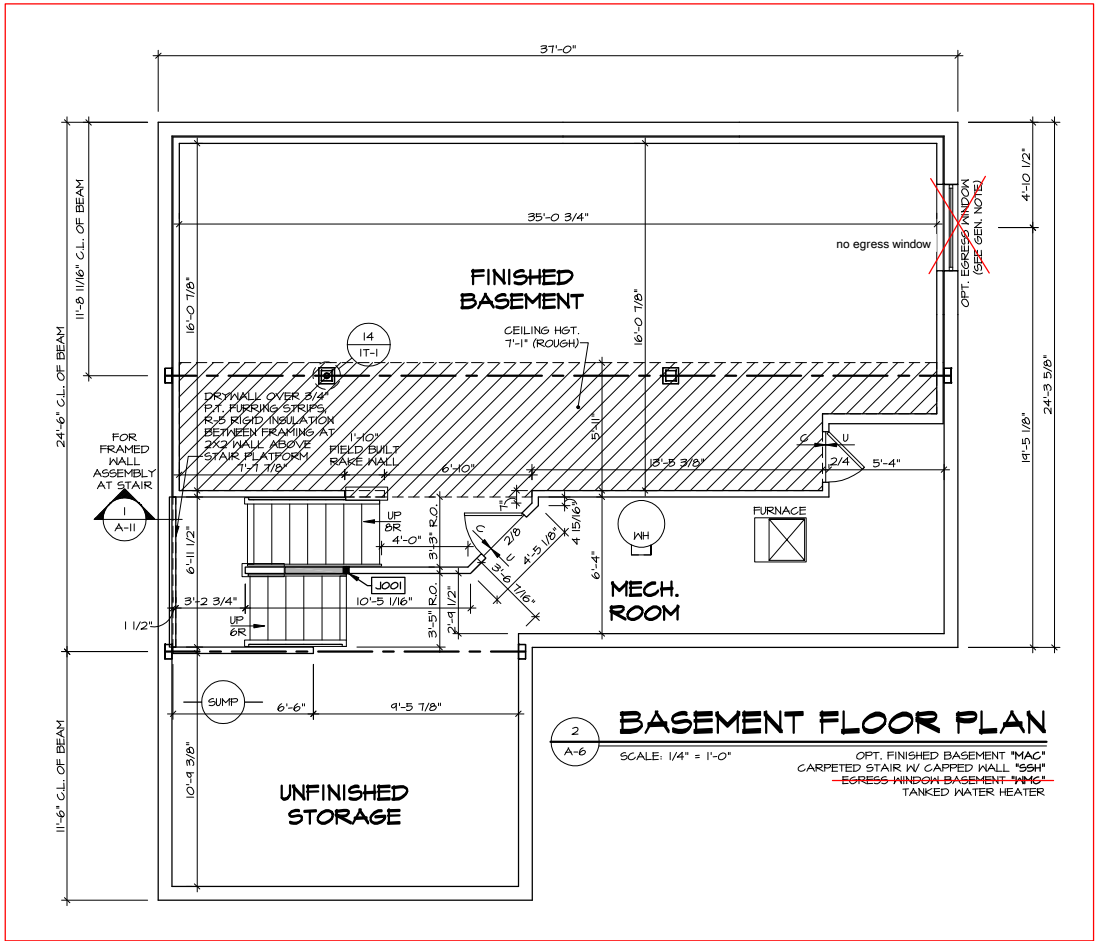
**PARTIAL BASEMENT FLOOR PLAN**  
SCALE: 1/4" = 1'-0"  
OPT. MET BAR BASEMENT "VAZ"

**NOTES:**  
1. SEE GENERAL NOTES (N-1) FOR ADDITIONAL INFORMATION.  
2. SCHEDULES (N-2)  
3. LVL NAILING SCHEDULE (N-1)

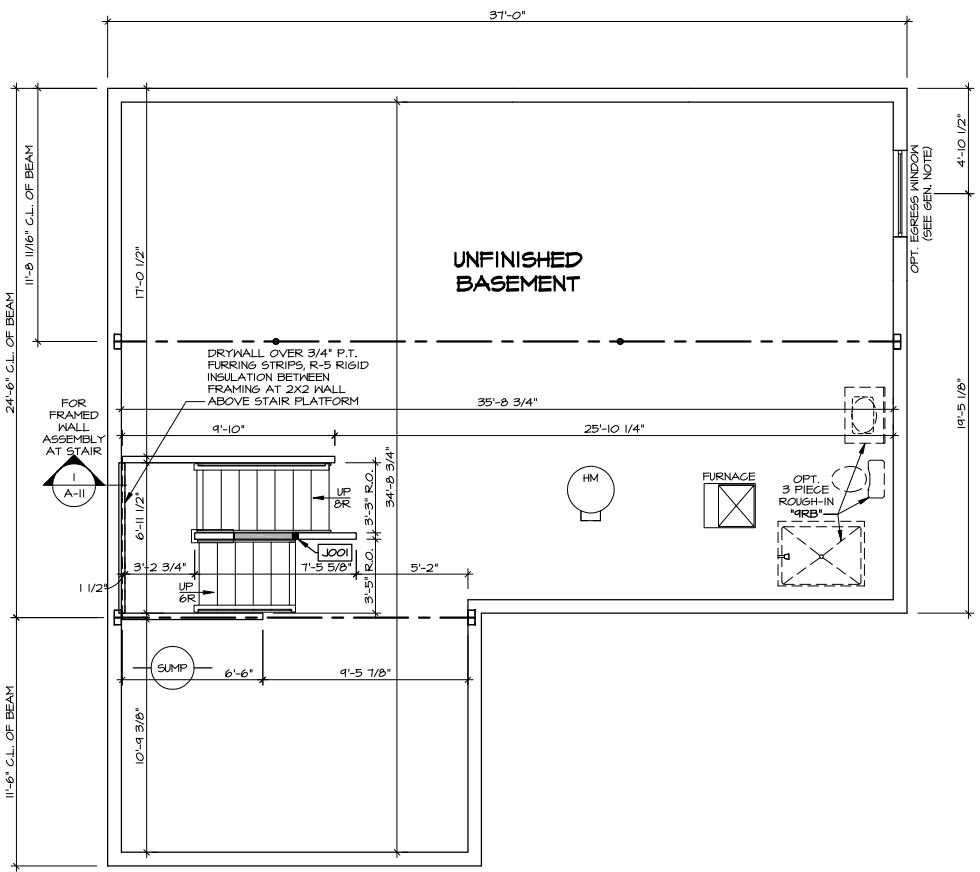
**LEGEND**

	BEARING WALL
	NON BEARING WALL
	MASONRY WALL
	INDICATES BEARING FROM POINT-LOAD ABOVE
	JACKS
	BEAM/HEADER
	FOOTINGS/THICKENED SLAB
	STEEL COLUMN
	TRUSS TIE DOWN
	PORTAL FRAME
	JOIST/TRUSS
	LVL
	ENGINEERING PAGE NUMBER
	WINDOW/DOOR TAG
	PRECAST LINTEL TAG

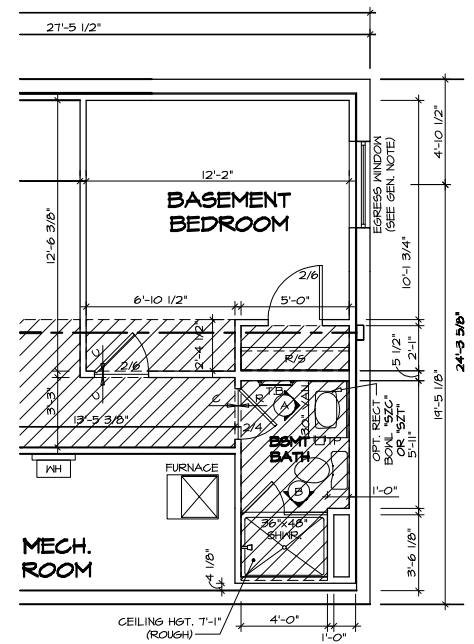
SEE FA DETAILS FOR FIRE ASSEMBLIES  
SEE FC DETAILS FOR FRAMING CONNECTORS AND MATERIAL USAGE



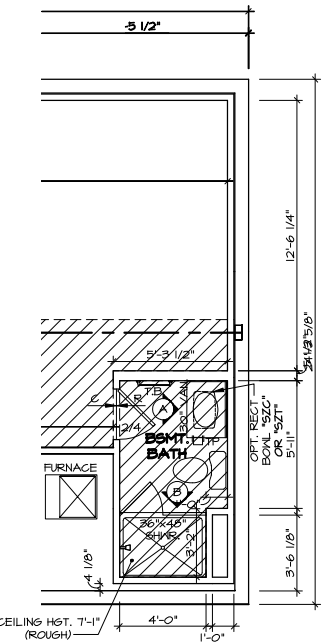
**BASEMENT FLOOR PLAN**  
SCALE: 1/4" = 1'-0"  
OPT. FINISHED BASEMENT "MAC"  
CARPETED STAIR W/ CARPETED WALL "SSH"  
EGRESS WINDOW BASEMENT "NMB"  
TANKED WATER HEATER



**BASEMENT FLOOR PLAN**  
SCALE: 1/4" = 1'-0"  
UNFINISHED BASEMENT "MEG"  
TANKED WATER HEATER



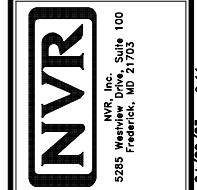
**PARTIAL BASEMENT FLOOR PLAN**  
SCALE: 1/4" = 1'-0"  
OPT. ONE BASEMENT BEDROOM "BAC"  
(BASEMENT BATHROOM SHOWER INCLUDED)  
WINDOW EGRESS BASEMENT BEDROOM "NMB"  
OPT. TANKLESS WATER HEATER



**PARTIAL BASEMENT FLOOR PLAN**  
SCALE: 1/4" = 1'-0"  
OPT. BASEMENT BATHROOM SHOWER "AEB"

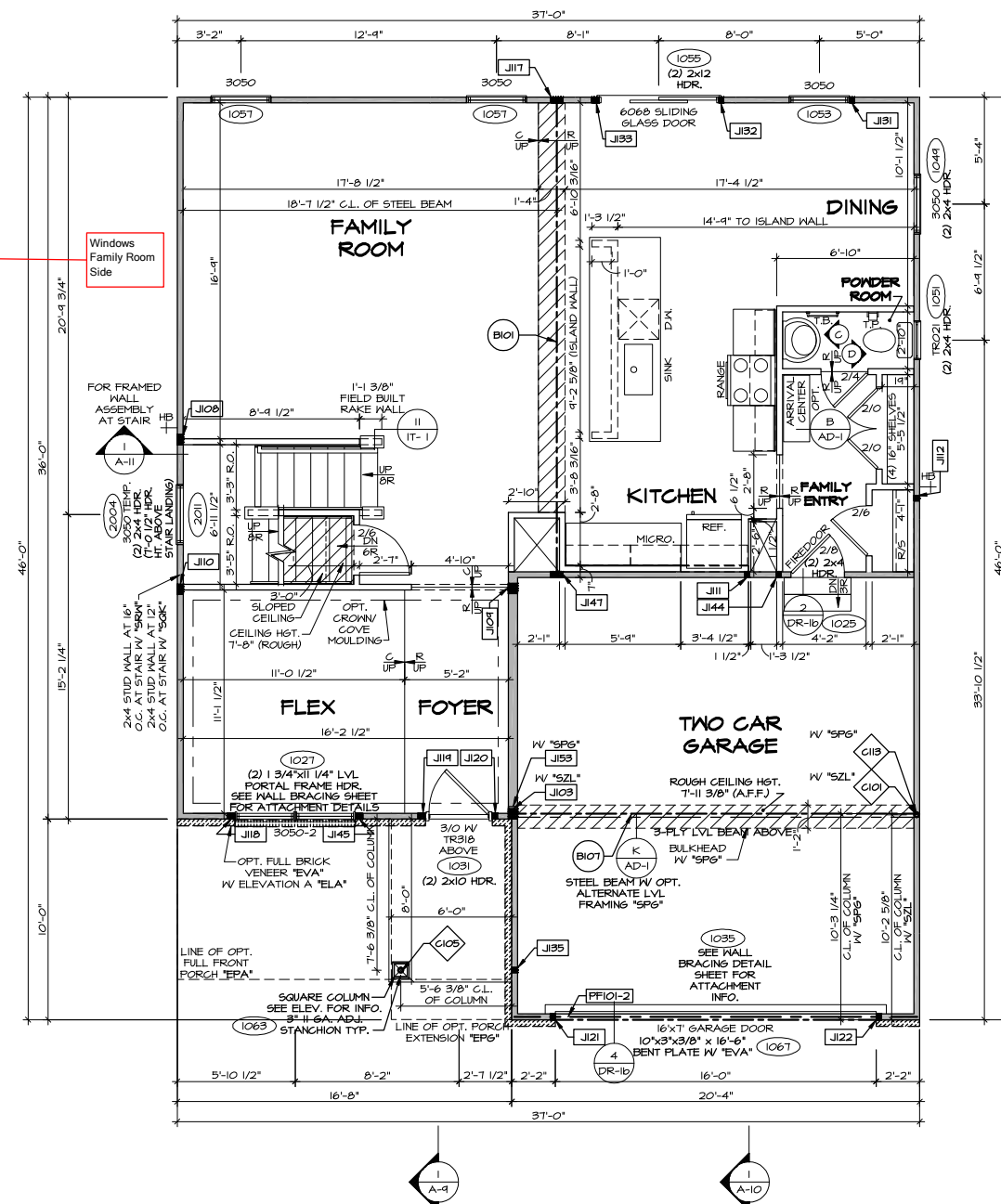
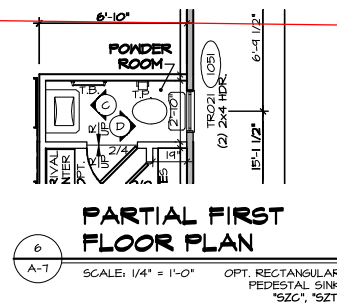
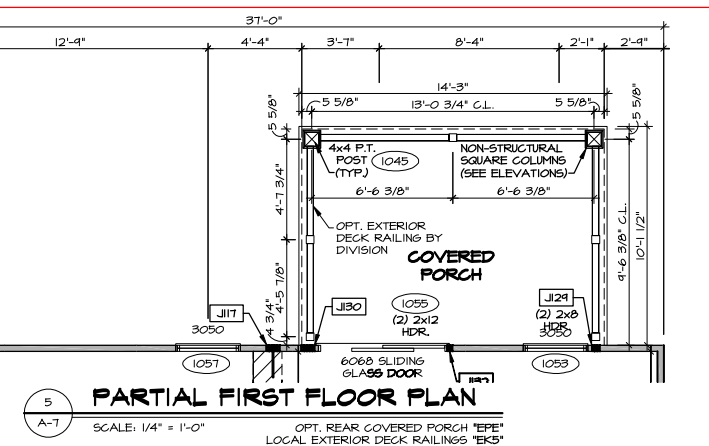
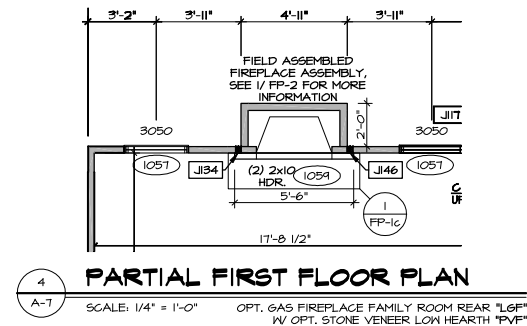
**REMARKS**

REV.	NO.	DATE	REMARKS



SHEET NO.	NOVEL COLUMBIA	SET NO. CLM00
DRAWING TITLE	BASEMENT FLOOR PLAN	VERSION 01
OPTION DESCRIPTION	FULL BASEMENT FOUNDATION	RELEASE NO. ----
		DRAWN BY CVB
		DATE: 7/10/17
		OPTION FBA






ALL WINDOWS HAVE T-O 1/2" HEADER HEIGHT UNLESS OTHERWISE NOTED

**NOTE:**  
EXTERIOR WALLS DRAWN TO FRAMING WIDTH, EXTERIOR SHEATHING IS NOT INCLUDED IN WALL THICKNESS.


**NOTES:**  
1. SEE GENERAL NOTES (N-I) FOR ADDITIONAL INFORMATION.  
2. SCHEDULES (N-2)  
3. LVL NAILING SCHEDULE (N-I)

**LEGEND**

 BEARING WALL


 NON BEARING WALL

 MASONRY WALL


 INDICATES BEARINGS FROM POINT-LOAD ABOVE


 JACKS


 BEAM/HEADER

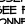
  FOOTING/THICKENED SLAB


 STEEL COLUMN


 TRUSS TIE DOWN

 PORTAL FRAME

 JOIST/TRUSS

 LVL

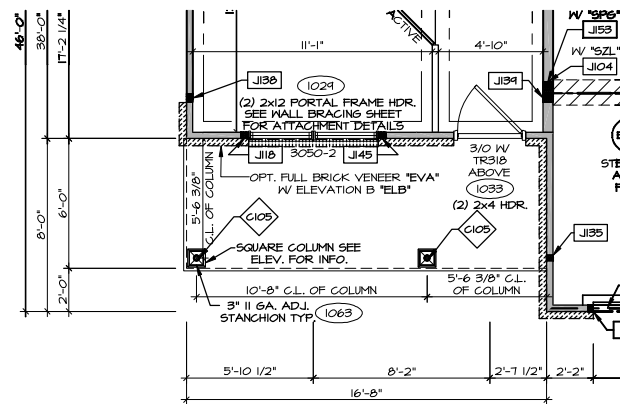
 ENGINEERING PAGE NUMBER

 WINDOW/DOOR TAG

 PRECAST LINTEL TAG

—SEE FA DETAILS FOR FIRE ASSEMBLIES  
—SEE FC DETAILS FOR FRAMING CONNECTORS AND MATERIAL USAGE

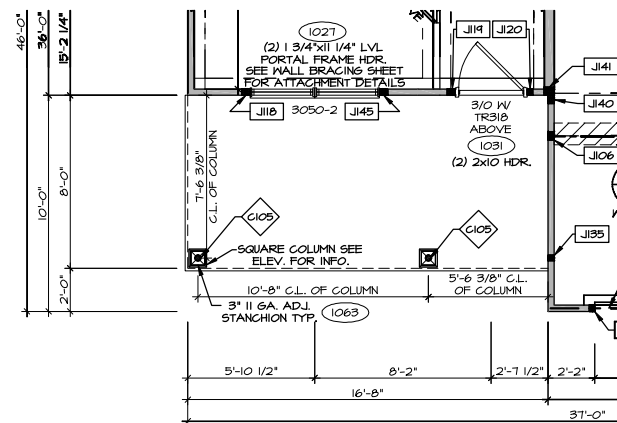
[illegible]



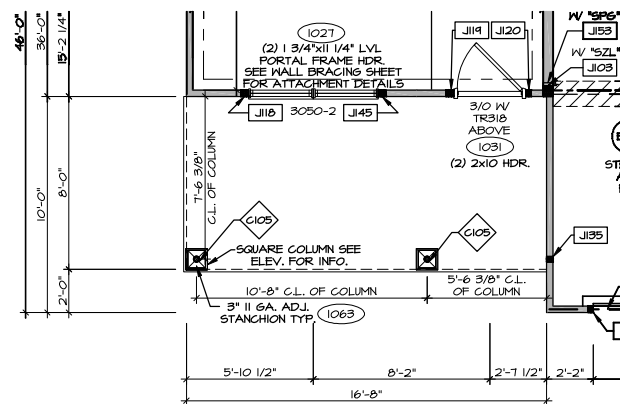
**PARTIAL FIRST FLOOR PLAN**

SCALE: 1/4" = 1'-0"

OPT. ELEVATION B "ELB"  
STANDARD LVZ FRAMING



2 PARTIAL FIRST FLOOR PLAN  
A-7b SCALE: 1/4" = 1'-0" OPT. ELEVATION C "ELC"

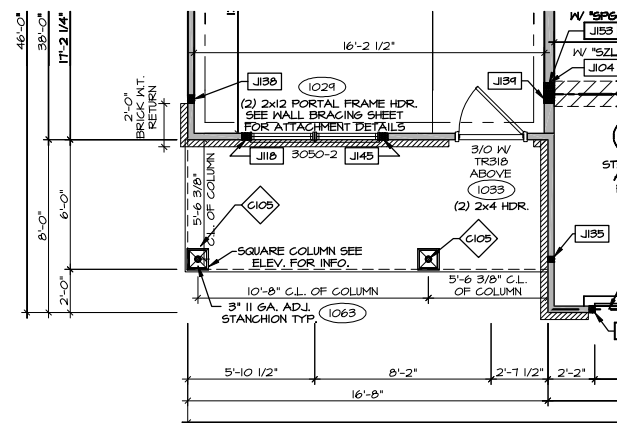


**PARTIAL FIRST FLOOR PLAN**

3  
A-7b

SCALE: 1/4" = 1'-0"

OPT. ELEVATION K "ELK"  
STANDARD LVL FRAMING "SVL"

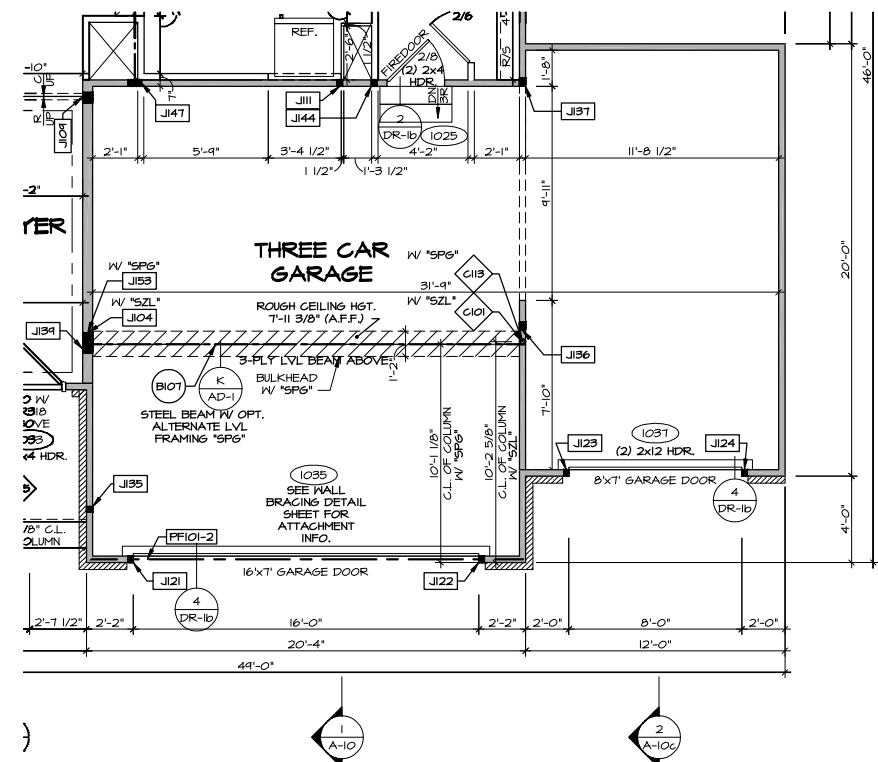


**PARTIAL FIRST FLOOR PLAN**

4  
A-7b

SCALE: 1/4" = 1'-0"

OPT. ELEVATION L "ELL"  
STANDARD LVL FRAMING "SZL"



5  
A~7b

**PARTIAL FIRST FLOOR PLAN**

SCALE: 1/4" = 1'-0" OPT. THREE CAR FRONT ENTRY GARAGE "6CF"  
SHOWN W/ ELEVATION L "ELL"  
STANDARD LVL FRAMING "SZL"

ALL WINDOWS HAVE 7'-0 1/2" HEADER  
HEIGHT UNLESS OTHERWISE NOTED
















NOTES:

1. SEE GENERAL NOTES (N-1) FOR ADDITIONAL INFORMATION.
2. SCHEDULES (N-2)
3. LVL NAILING SCHEDULE (N-1)

**NOTE:**

EXTERIOR WALLS DRAWN TO FRAMING WIDTH, EXTERIOR SHEATHING IS NOT INCLUDED IN WALL THICKNESS.

### LEGEND

- |   |  |
|---|--|
|  | BEARING WALL                               |
|  | NON BEARING WALL                           |
|  | MASONRY WALL                               |
|  | INDICATES BEARING FROM<br>POINT-LOAD ABOVE |
|  | JACKS                                      |
|  | BEAM/HEADER                                |
|  | FOOTING/THICKENED SLAB                     |
|  | STEEL COLUMN                               |
|  | TRUSS TIE DOWN                             |
|  | PORTAL FRAME                               |
|  | JOIST/TRUSS                                |
|  | LVL  |
|  | ENGINEERING PAGE NUMBER                    |
|  | WINDOW/DOOR TAG                            |
|  | PRECAST LINTEL TAG                         |

-SEE FA DETAILS FOR FIRE ASSEMBLIES  
-SEE FC DETAILS FOR FRAMING CONNECTORS AND MATERIAL USAGE

© NVR, Inc., The owner, expressly reserves its copyright and other property rights in these plans. These plans are not to be reproduced, changed, or copied in any form or manner whatsoever, nor are they to be assigned to any third party, without first obtaining the expressed written consent of NVR, Inc.



NVR, Inc.  
5285 Westview Drive, Suite 100  
Frederick, MD 21703

SET NO. CLMOO	OPTION
VERSION OI	FBA
RELEASE NO. ----	
DRAWN BY DRA	
DATE: 8/8/17	

MODEL	COLUMBIA
DRAWING TITLE	FIRST FLOOR PLAN RIDER

OPTION DESCRIPTION	FULL BASEMENT
1.00	1.00
2.00	2.00
3.00	3.00
4.00	4.00
5.00	5.00
6.00	6.00
7.00	7.00
8.00	8.00
9.00	9.00
10.00	10.00
11.00	11.00
12.00	12.00
13.00	13.00
14.00	14.00
15.00	15.00
16.00	16.00
17.00	17.00
18.00	18.00
19.00	19.00
20.00	20.00
21.00	21.00
22.00	22.00
23.00	23.00
24.00	24.00
25.00	25.00
26.00	26.00
27.00	27.00
28.00	28.00
29.00	29.00
30.00	30.00
31.00	31.00
32.00	32.00
33.00	33.00
34.00	34.00
35.00	35.00
36.00	36.00
37.00	37.00
38.00	38.00
39.00	39.00
40.00	40.00
41.00	41.00
42.00	42.00
43.00	43.00
44.00	44.00
45.00	45.00
46.00	46.00
47.00	47.00
48.00	48.00
49.00	49.00
50.00	50.00
51.00	51.00
52.00	52.00
53.00	53.00
54.00	54.00
55.00	55.00
56.00	56.00
57.00	57.00
58.00	58.00
59.00	59.00
60.00	60.00
61.00	61.00
62.00	62.00
63.00	63.00
64.00	64.00
65.00	65.00
66.00	66.00
67.00	67.00
68.00	68.00
69.00	69.00
70.00	70.00
71.00	71.00
72.00	72.00
73.00	73.00
74.00	74.00
75.00	75.00
76.00	76.00
77.00	77.00
78.00	78.00
79.00	79.00
80.00	80.00
81.00	81.00
82.00	82.00
83.00	83.00
84.00	84.00
85.00	85.00
86.00	86.00
87.00	87.00
88.00	88.00
89.00	89.00
90.00	90.00
91.00	91.00
92.00	92.00
93.00	93.00
94.00	94.00
95.00	95.00
96.00	96.00
97.00	97.00
98.00	98.00
99.00	99.00
100.00	100.00

**SHEET NO.**

**A-7b**

4

C:\NVR\Solves\COLUMBIA\CLM00\_01\_11148\Sheets\Master Set\First Floor Plan\A-7b PLN1.FBA.dwg 04/09/25 - 9:11 am

A-B SCALE: 1/4" = 1'-0" OPT. OWNER'S BATHROOM  
ROMAN SHOWER "AMG"

5 PARTIAL SECOND FLOOR PLAN  
A-B SCALE: 1/4" = 1'-0" OPTIONAL DOUBLE BOWL VANITY "VVD"

4 PARTIAL SECOND FLOOR PLAN

SCALE: 1/4" = 1'-0" SHOWN W/ ELEVATION A "ELA"  
OPT. THREE BEDROOM W/ LOFT "BCH"  
WITH  
OPT. PINE STAIR W/ WHITE BALUSTERS "SSG"  
OPT. OAK STAIR W/ WHITE BALUSTERS "SST"  
OPT. CARPETED STAIR W/ SQUARE WHITE BALUSTERS "SNR"  
OPT. OAK STAIR W/ METAL BALUSTERS "SNS"

A-B SCALE: 1/4" = 1'-0" OPT. OWNER'S BATHROOM  
SOAKING TUB AND SHOWER  
GLASS SURROUND "AMF"

9 PARTIAL SECOND FLOOR PLAN

SCALE: 1/4" = 1'-0"      SHOWN W/ ELEVATION A "ELA  
OPT. ERV AIR SUPPLY "BCD

SECOND FLOOR PLAN

SCALE: 1/4" = 1'-0"      SHOWN W/ ELEVATION A "ELA  
OR OPT. ELEVATION K "ELK  
FOUR BEDROOM "BDB  
CARPETED STAIR W/ CAPPED WALL "SSH  
8/12 ROOF PITCH "RPE

2 PARTIAL SECOND FLOOR PLAN

SCALE: 1/4" = 1'-0"      OPT. ELEVATION B "ELB"  
OR OPT. ELEVATION L "ELL"

3 PARTIAL SECOND FLOOR PLAN

SCALE: 1/4" = 1'-0"      OPT. ELEVATION C "ELC"

8 PARTIAL SECOND FLOOR PLAN

SCALE: 1/4" = 1'-0" OPT. 6/12 ROOF PITCH "RPC"  
NO ATTIC STORAGE "ZSX"  
NO ATTIC STORAGE PULLDOWN SAIRS "ZXU"



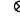
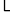





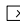





ALL WINDOWS HAVE 7'-0 1/2" HEADER  
HEIGHT UNLESS OTHERWISE NOTED

**NOTE:**  
EXTERIOR WALLS DRAWN TO FRAMING WIDTH, EXTERIOR SHEATHING IS NOT INCLUDED IN WALL THICKNESS.

NOTES:

1. SEE GENERAL NOTES (N-1) FOR ADDITIONAL INFORMATION.
2. SCHEDULES (N-2)
3. LVL NAILING SCHEDULE (N-1)

### LEGEND

- |   |  |
|---|--|
|  | BEARING WALL                               |
|  | NON BEARING WALL                           |
|  | MASONRY WALL                               |
|  | INDICATES BEARING FROM<br>POINT-LOAD ABOVE |
|  | JACKS                                      |
|  | BEAM/HEADER                                |
|  | FOOTINGS/THICKENED SLAB                    |
|  | STEEL COLUMN                               |
|  | TRUSS TIE DOWN                             |
|  | PORTAL FRAME                               |
|  | JOIST/TRUSS                                |
|  | LVL  |
|  | ENGINEERING PAGE NUMBER                    |
|  | WINDOW/DOOR TAG                            |
|  | PRECAST LINTEL TAG                         |
- SEE FA DETAILS FOR FIRE ASSEMBLIES  
 --SEE FC DETAILS FOR FRAMING CONNECTIONS AND MATERIAL USAGE

©NVR, Inc., expressly reserves its copyright and other property rights in these plans. These plans are not to be reproduced, changed, or copied in any form or manner whatsoever, nor are they to be assigned to any third party, without first obtaining the expressed written consent of NVR, Inc.

**NVR**  
NVR, Inc.  
285 Westview Drive, Suite 100

MODEL	SET NO. CL-MOO
COLUMBIA	VERSION OI
DRAWING TITLE	RELEASE NO. ----
SECOND FLOOR PLAN	DRAWN BY ARM
	DATE: 7/10/17
OPTION DESCRIPTION	OPTION

NET NO. 8-8