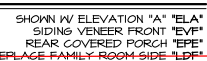
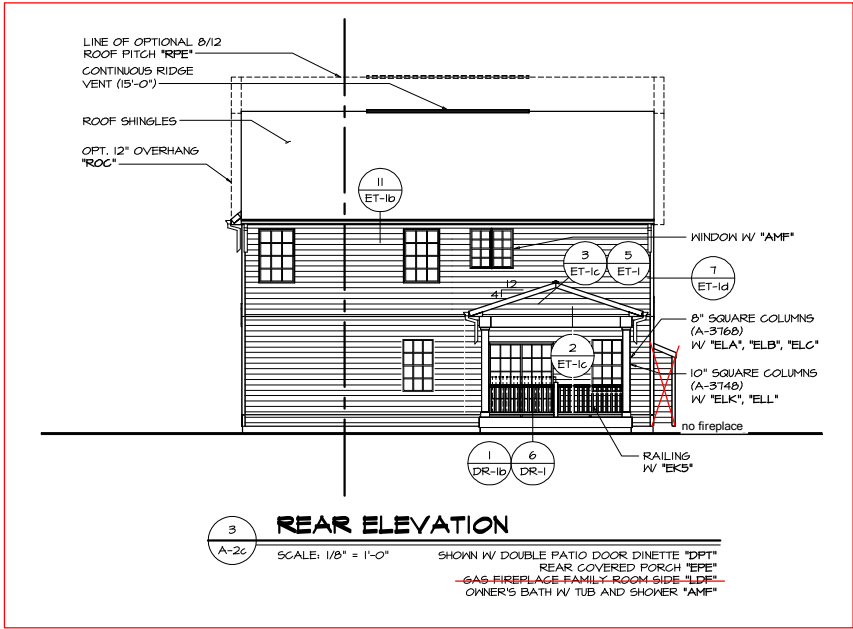


NOTE:
GARAGE DOOR GLASS
DESIGN MAY VARY BY
MANUFACTURER

[illegible]



C:\NVR\Solves\HUDSON HUD00_01_11765\Sheets\Master Set\Elevations\A-2b ELV LEFT.dwg 04/23/25 -- 8:02 am

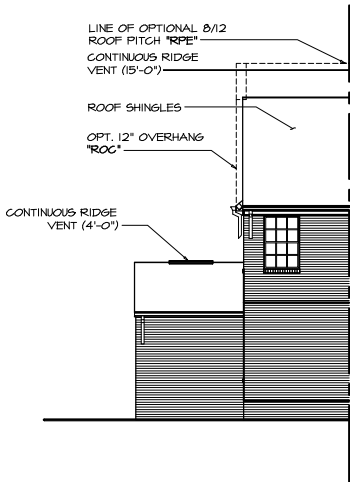


6
A-2c

REAR ELEVATION

SCALE: 1/8" = 1'-0"

OPT. BRICK VENEER REAR "EVK"
OPT. THREE CAR FRONT ENTRY
GARAGE "GCI"

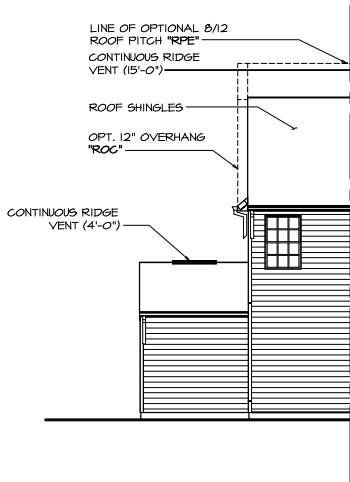


5
A-2c

REAR ELEVATION

SCALE: 1/8" = 1'-0"

OPT. THREE CAR FRONT ENTRY
GARAGE "GCI"

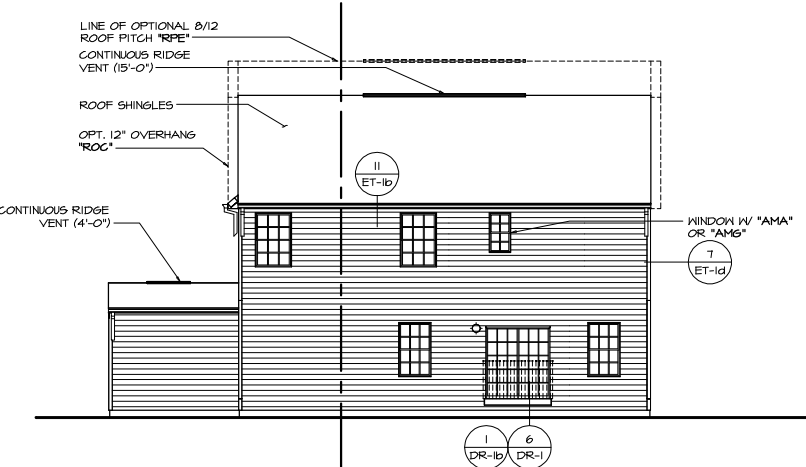
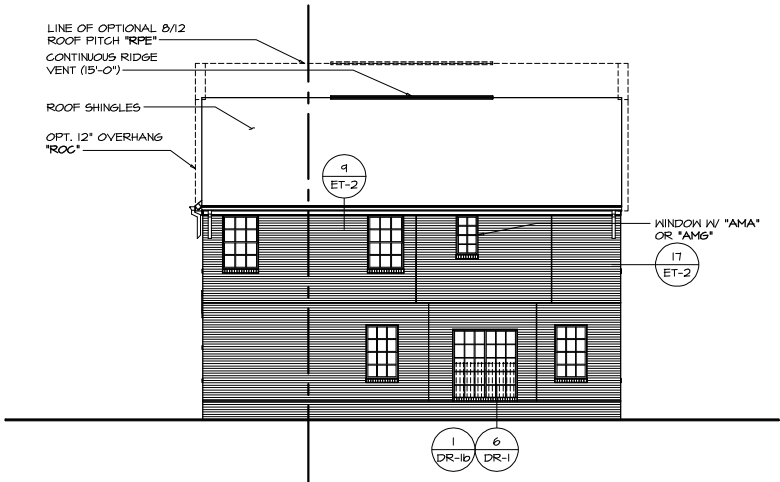


4
A-2c

REAR ELEVATION

SCALE: 1/8" = 1'-0"

SHOWN W/ SLIDING GLASS DOOR DINETTE "DGT"
SHOWN W/ OWNER'S BATHROOM SHOWER "AMA"
OR OWNER'S BATH W/ ROMAN SHOWER W/ SEAT "AMS"
OPT. BRICK VENEER REAR "EVK"

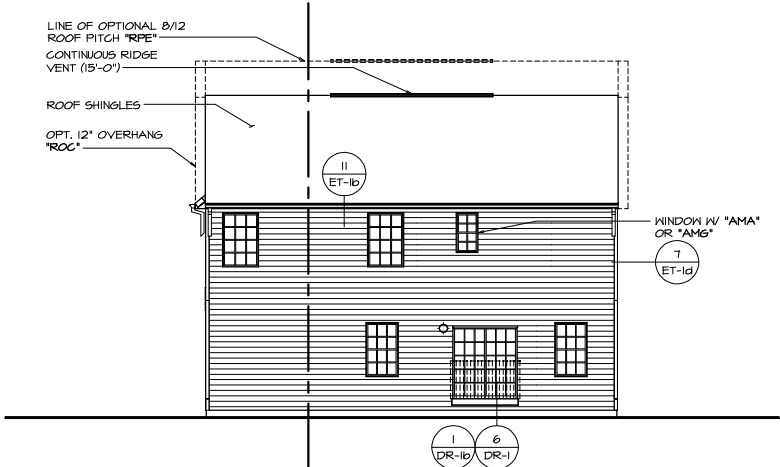


2
A-2c

REAR ELEVATION

SCALE: 1/8" = 1'-0"

SHOWN W/ SLIDING GLASS DOOR DINETTE "DGT"
THREE CAR FRONT ENTRY GARAGE "GCI"
SHOWN W/ OWNER'S BATHROOM SHOWER "AMA"
OR OWNER'S BATH W/ ROMAN SHOWER W/ SEAT "AMS"



1
A-2c

REAR ELEVATION

SCALE: 1/8" = 1'-0"

SHOWN W/ SLIDING GLASS DOOR DINETTE "DGT"
SHOWN W/ OWNER'S BATHROOM SHOWER "AMA"
OR OWNER'S BATH W/ ROMAN SHOWER W/ SEAT "AMS"

SHEET NO. **A-2c**

NOVEL
HUDSON
DRAWING TITLE
REAR ELEVATION

OPTION DESCRIPTION

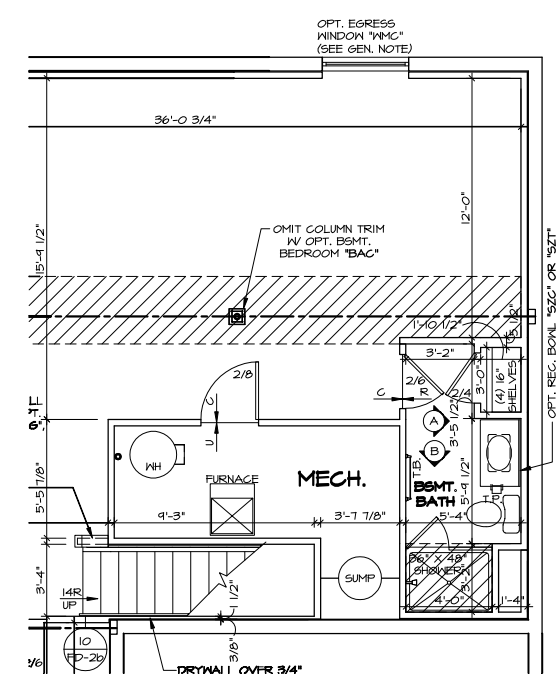
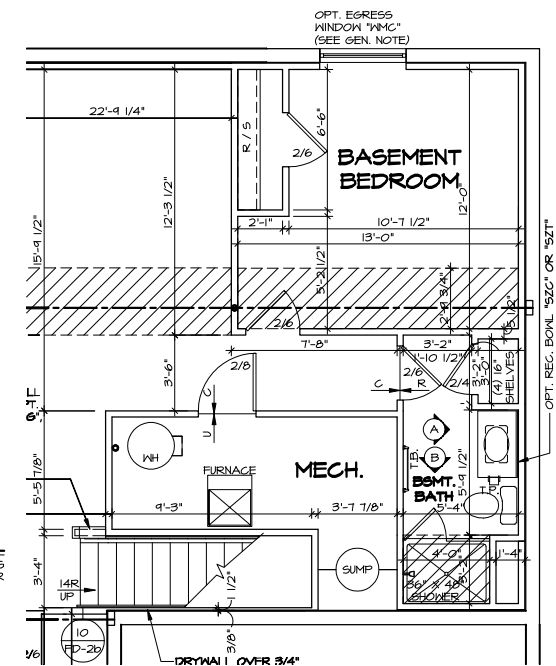
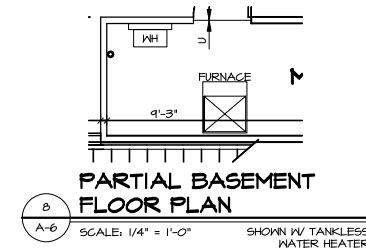
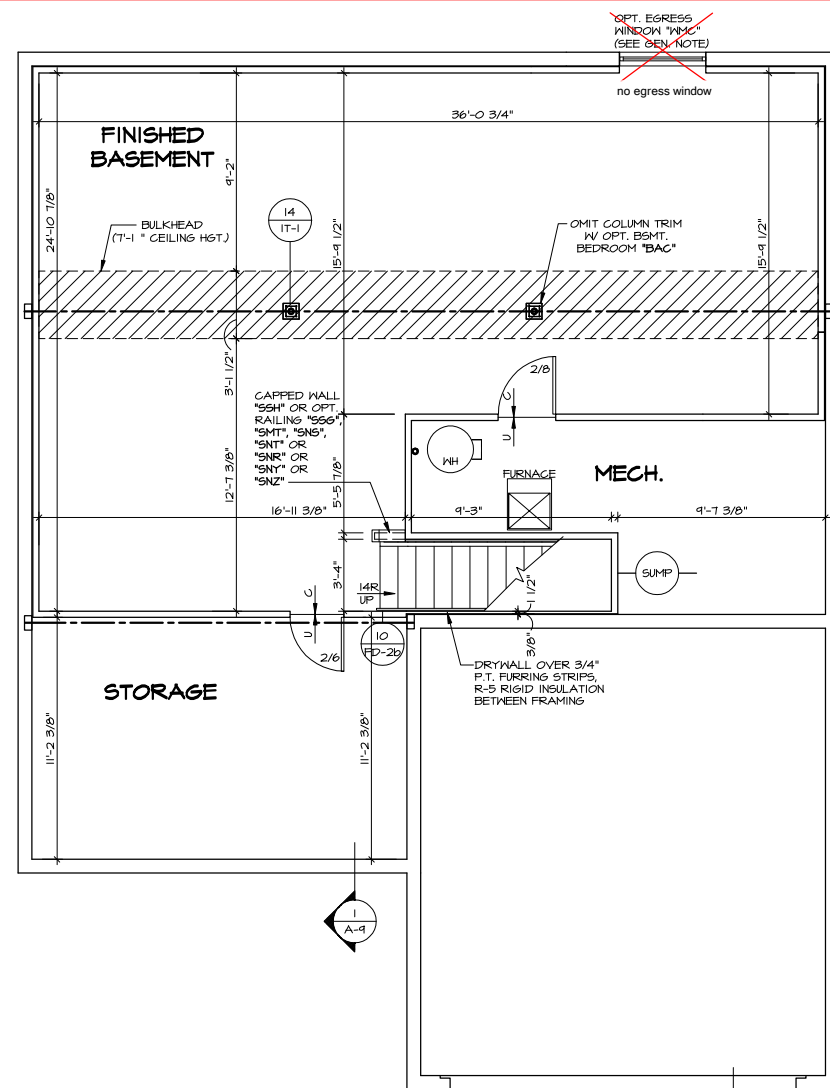
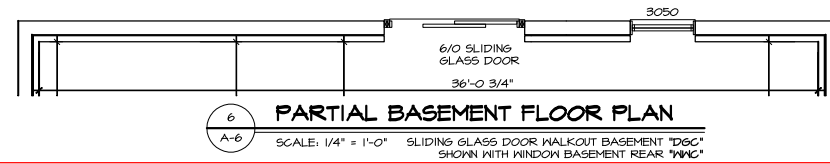
SET NO. **HUD00**
VERSION 01
RELEASE NO. ----
DRAWN BY **SCA**
DATE: **8/28/17**
OPTION

NVR, Inc. expressly reserves its
copyright and other property rights
in these plans. These plans are not
to be reproduced, stored in a retrieval
system, or transmitted in any form or
by any means, electronic, mechanical,
photocopying, recording, or by any
information storage and retrieval system,
without the prior written consent of NVR, Inc.








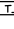

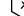





REV. NO. DATE

REMARKS

18



LEGEND

	BEARING WALL
	NON BEARING WALL
	MASONRY WALL
	INDICATES BEARINGS FROM POINT-LOAD ABOVE
	JACKS
	BEAM/HEADER
	FOOTING/THICKENED SLAB
	STEEL COLUMN
	TRUSS TIE DOWN
	PORTAL FRAME
	JOIST/TRUSS
	LVL
	ENGINEERING PAGE NUMBER
	WINDOW/DOOR TAG
	PREFRAG LINTEL TAG

-SEE FA DETAILS FOR FIRE ASSEMBLIES
-SEE FC DETAILS FOR FRAMING CONNECTORS AND MATERIAL USAGE

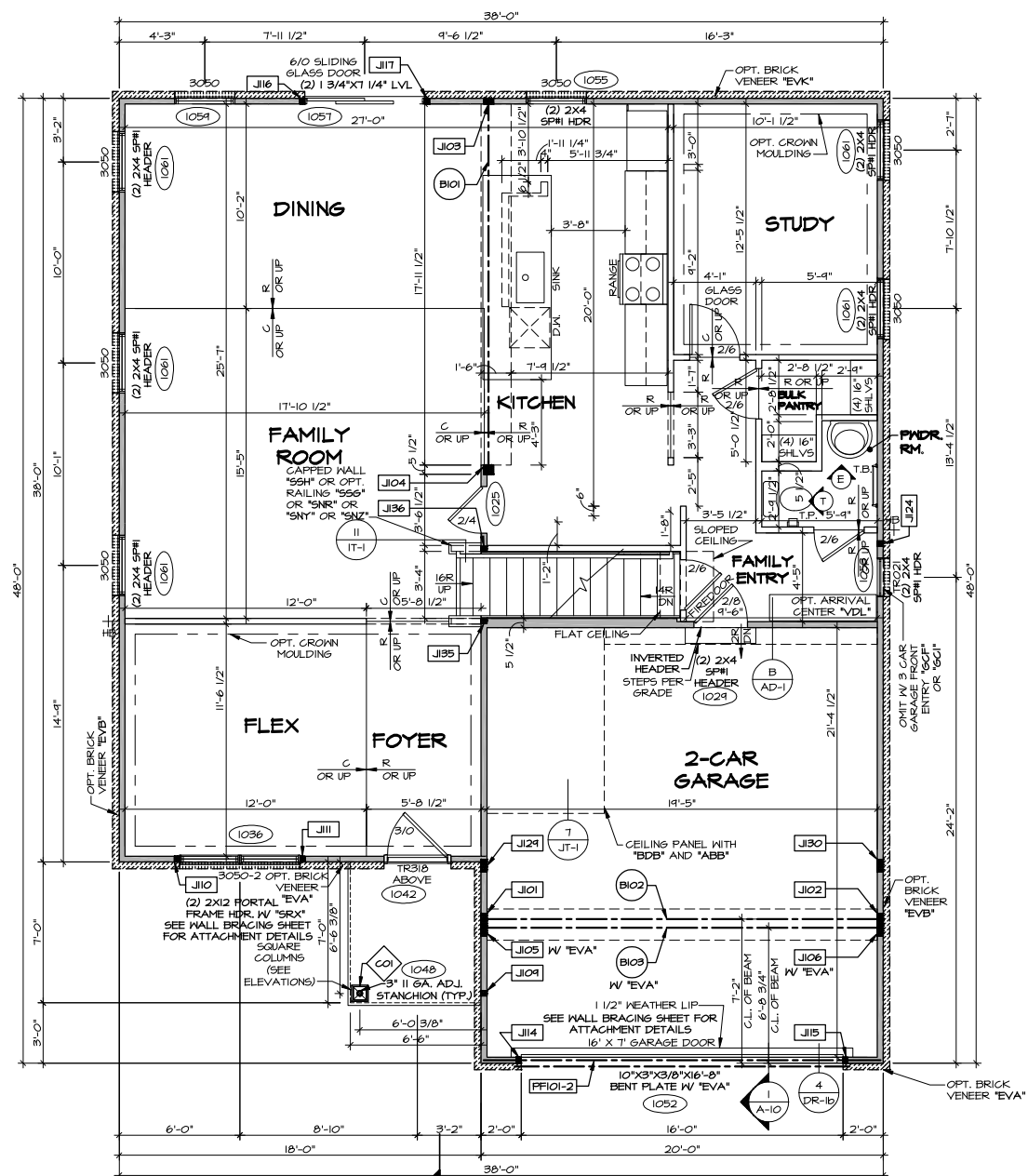
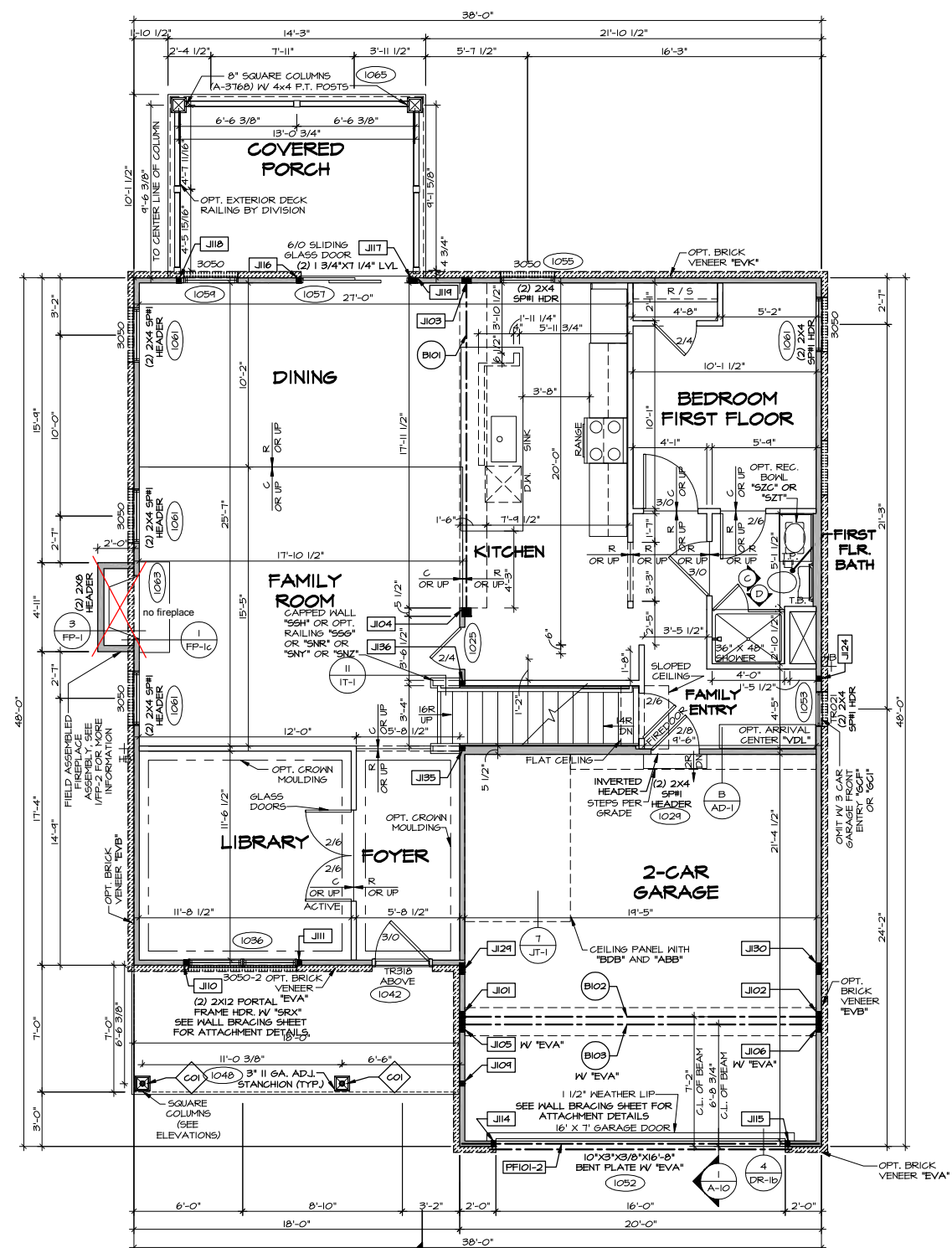
[illegible]

NVR, Inc., the owner, expressly reserves its copyright and other property rights in these plans. These plans are not to be reproduced, changed, or copied in any form or manner whatsoever, nor are they to be assigned to any third party, without first obtaining the expressed written consent of NVR, Inc.



NVR, Inc.
5285 Westview Drive, Suite 100
Frederick, MD 21703



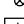






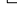
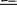



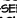
SHEET NO. A-6	MODEL HUDSON	SET NO. HUDCO VERSION 01 RELEASE NO. 00000000
	DRAWING TITLE BASEMENT PLAN	DRAWN BY SKB DATE: 6/21/17
53	OPTION DESCRIPTION FINISHED BASEMENT	OPTION MAC



NOTES:

1. SEE GENERAL NOTES (N-1) FOR ADDITIONAL INFORMATION.
2. SCHEDULES (N-2)
3. LVL NAILING SCHEDULE (N-1)

LEGEND

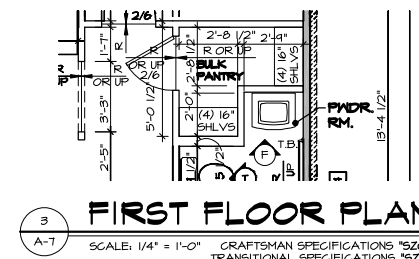
- | | |
|---|---|
|  | BEARING WALL |
|  | NON BEARING WALL |
|  | MASONRY WALL |
|  | INDICATES BEARING FROM POINT-LOAD ABOVE |
|  | JACKS |
|  | BEAM/HEADER |
|  | FOOTING/THICKENED SLAB |
|  | STEEL COLUMN |
|  | TRUSS TIE DOWN |
|  | PORTAL FRAME |
|  | JOIST/TRUSS |
|  | LVL |
|  | ENGINEERING PAGE NUMBER |
|  | WINDOW/DOOR TAG |
|  | PREFCAST LINTEL TAG |

-SEE FA DETAILS FOR FIRE ASSEMBLIES
-SEE FC DETAILS FOR FRAMING CONNECTORS AND MATERIAL USAGE

NOTE:

NOTE:
EXTERIOR WALLS DRAWN TO FRAMING
WIDTH, EXTERIOR SHEATHING IS NOT
INCLUDED IN WALL THICKNESS.

ALL WINDOWS HAVE 7'-0 1/2" HEADER
HEIGHT UNLESS OTHERWISE NOTED



© NVR, Inc., expressly reserves its The owner, copyright and other property rights in these plans. These plans are not to be reproduced, changed, or copied in any form or manner whatsoever, nor are they to be assigned to any third party, without first obtaining the expressed written consent of NVR, Inc.



NVR, Inc.
5285 Westview Drive, Suite 100

SET NO. HUDOO	DRAWN BY SKB
VERSION OI	DATE: 6/21/17
RELEASE NO. ---	OPTION

--	--	--	--

--	--	--	--	--

ON	FOR PLAN	DESCRIPTION
----	----------	-------------

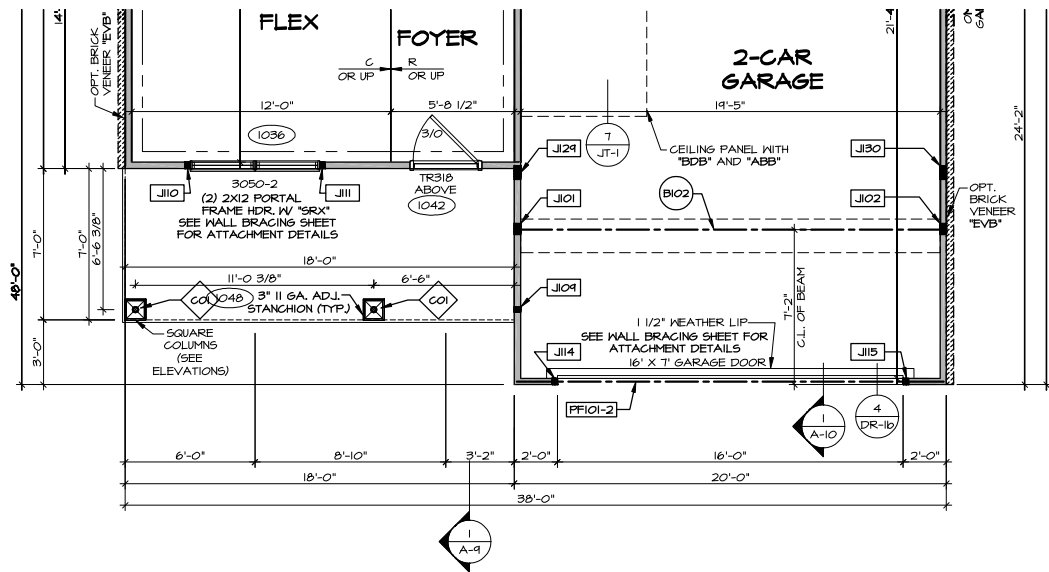
MODEL	HUDSC
DRAWING TITLE	FIRST FLOOR
OPTION DESCRIPTION	

SHEET NO. A-7

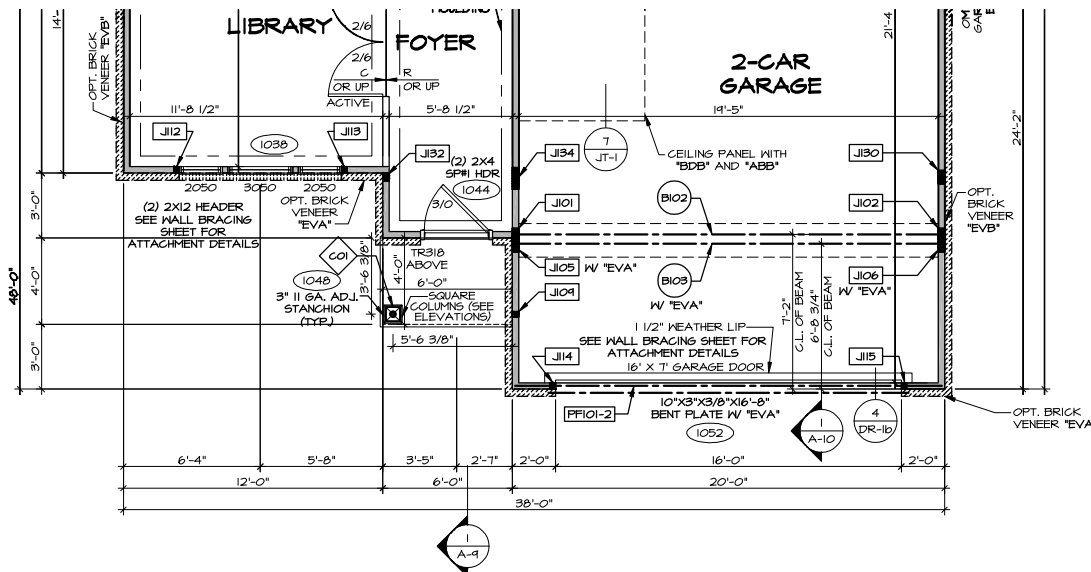
54 FULL BASEMENT FOUNDATION

—

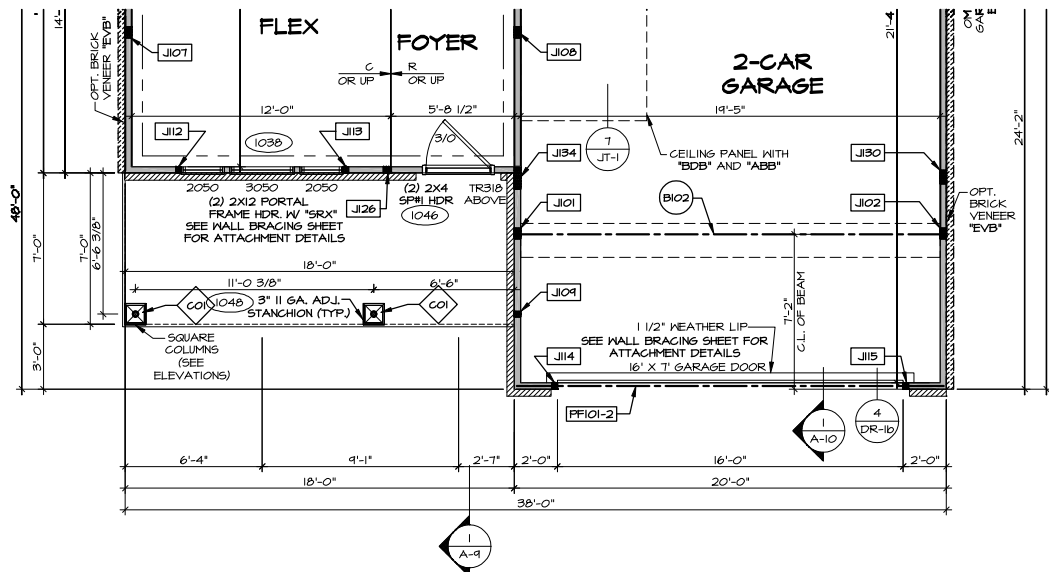
\\NVR\Solves\HUDSON_HUD00_01_11265\Sheets\Master Set\First Floor Plan\A-7 PLN1_FBA.dwg 04/23/25 - 8:05 am



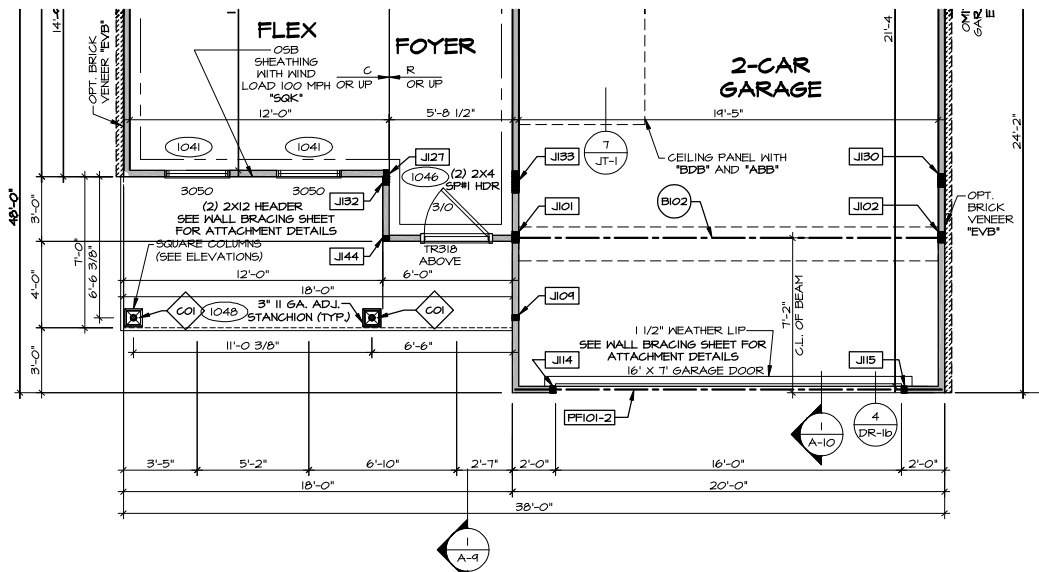
3 PARTIAL FIRST FLOOR PLAN
SCALE: 1/4" = 1'-0"
ELEVATION K "ELK"



1 PARTIAL FIRST FLOOR PLAN
SCALE: 1/4" = 1'-0"
ELEVATION B "ELB"



4 PARTIAL FIRST FLOOR PLAN
SCALE: 1/4" = 1'-0"
ELEVATION L "ELL"



2 PARTIAL FIRST FLOOR PLAN
SCALE: 1/4" = 1'-0"
ELEVATION C "ELC"

- NOTES:
- SEE GENERAL NOTES (N-1) FOR ADDITIONAL INFORMATION.
 - SCHEDULES (N-2)
 - LVL NAILING SCHEDULE (N-1)

LEGEND

- BEARING WALL
- NON BEARING WALL
- MASONRY WALL
- INDICATES BEARING FROM POINT-LOAD ABOVE
- JACKS
- BEAM/HEADER
- FOOTING/THICKENED SLAB
- STEEL COLUMN
- TRUSS TIE DOWN
- PORTAL FRAME
- JOIST/TRUSS
- LVL
- ENGINEERING PAGE NUMBER
- WINDOW/DOOR TAG
- PRECAST LINTEL TAG
- SEE FA DETAILS FOR FIRE ASSEMBLIES
- SEE FC DETAILS FOR FRAMING CONNECTORS AND MATERIAL USAGE

NOTE:
EXTERIOR WALLS DRAWN TO FRAMING WIDTH, EXTERIOR SHEATHING IS NOT INCLUDED IN WALL THICKNESS.

ALL WINDOWS HAVE 1'-0 1/2" HEADER HEIGHT UNLESS OTHERWISE NOTED

NVR, Inc. expressly reserves its copyright and other property rights in these plans. These plans are not to be reproduced, stored in a retrieval system, or used in any form or by any means, electronic, mechanical, photocopying, recording, or by any information storage and retrieval system, without the prior written consent of NVR, Inc.

NVR
NVR, Inc.
5285 Westview Drive, Suite 100
Frederick, MD 21703

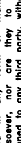
SET NO. HUD00
VERSION 01
RELEASE NO. ----
DRAWN BY SKB
DATE: 6/2/17
OPTION
ELB, ELC
ELK, ELL

SHEET NO.
A-7b
DRAWING TITLE
PARTIAL FIRST FLOOR ELEVATION

OPTION DESCRIPTION
ELEVATIONS "B", "C", "K", "L"

56

C:\NVR\Software\HUDSON\HUD00_01_17285\Sheet\Master Set\Final Floor Plan A-7b PLT ELEV.dwg 04/23/25 - 8:05 am

SHEET NO. A-8	MODEL HUDSON	SET NO. HUD00	 NVR, Inc. 3285 Washlew Drive, Suite 100 Frederick, MD 21703	© NVR, Inc. The owner, expressly reserves its copyright and all other rights in these plans. These plans are not to be reproduced, changed, or altered in any way without the express written consent of NVR, Inc.	REV. NO. DATE	REMARKS
	DRAWING TITLE SECOND FLOOR PLAN	VERSION O1 RELEASE NO. ---- DRAWN BY SGA DATE: 12/15/17				
	OPTION DESCRIPTION FULL BASEMENT FOUNDATION FOUR BEDROOM BATH #2	OPTION FBA EPB ABB				