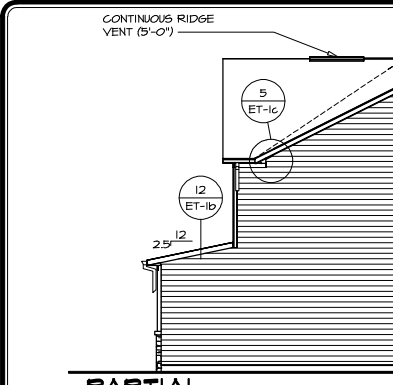


NOTE:  
GARAGE DOOR GLASS  
DESIGN MAY VARY BY  
MANUFACTURER

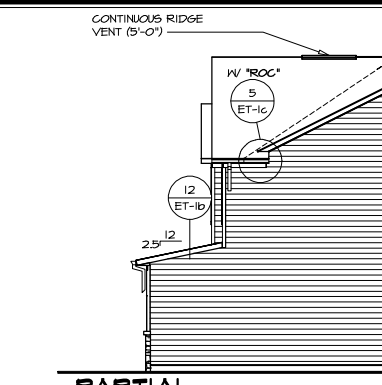
SHEET NO. <b>A-1</b>	MODEL <b>HUDSON</b> DRAWING TITLE <b>FRONT ELEVATION</b>	SET NO. HUD00 VERSION 01 RELEASE NO. <small>000000</small> DRAWN BY SGA DATE: 5/25/17	OPTION ELL	OPTION DESCRIPTION ELEVATION "L"	14	<div><div><div><b>NVR</b></div><div>NVR, Inc. 5285 Westview Drive, Suite 100 Frederick, MD 21703</div></div><div>© NVR, Inc., expressly reserves its copyright and other property rights in these plans. These plans are not to be reproduced, stored in a retrieval system, or transmitted in any form or by any means, electronic, mechanical, photocopying, recording, or by any information storage and retrieval system, without the prior written consent of NVR, Inc.</div></div>	REV. NO.	DATE	REMARKS
							1	5/6/18	SGA - AUDIT REVISIONS



**PARTIAL  
RIGHT ELEVATION**

6  
A-2

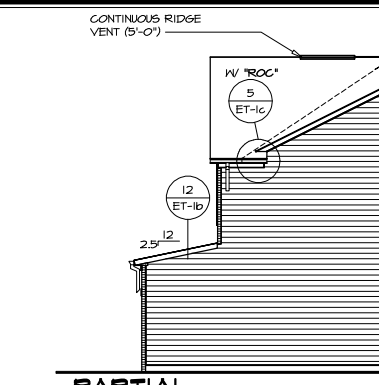
SCALE: 1/8" = 1'-0" SHOWN W/ ELEVATION "K" "ELK"  
TWO CAR FRONT ENTRY GARAGE "GCB"



**PARTIAL  
RIGHT ELEVATION**

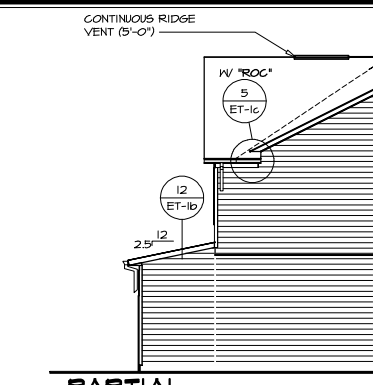
5  
A-2

SCALE: 1/8" = 1'-0" SHOWN W/ ELEVATION "C" "ELC"  
TWO CAR FRONT ENTRY GARAGE "GCB"



**PARTIAL  
RIGHT ELEVATION**

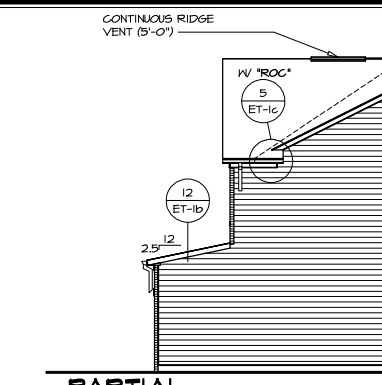
SCALE: 1/8" = 1'-0" SHOWN W/ ELEVATION "B" "ELB"  
BRICK VENEER FRONT "EVA"



**PARTIAL  
RIGHT ELEVATION**

3  
A-2

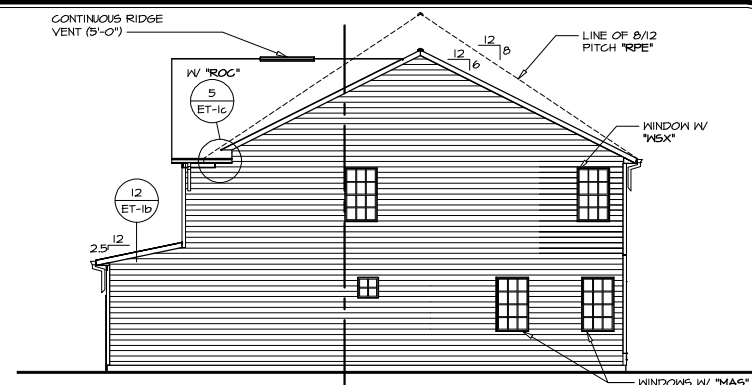
SCALE: 1/8" = 1'-0" SHOWN W/ ELEVATION "B" "ELB"  
SIDING VENEER FRONT "EVF"



**PARTIAL  
RIGHT ELEVATION**

2  
A-2

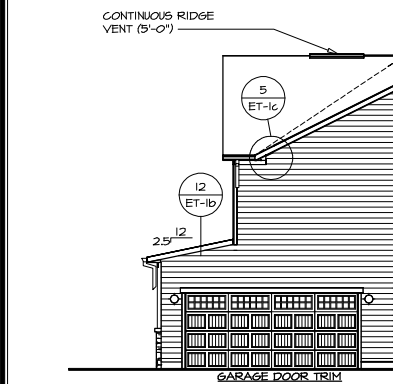
SCALE: 1/8" = 1'-0" SHOWN W/ ELEVATION "A" "ELA"  
BRICK VENEER FRONT "EVA"

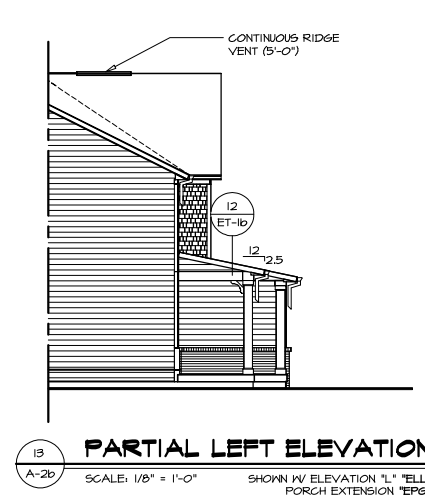
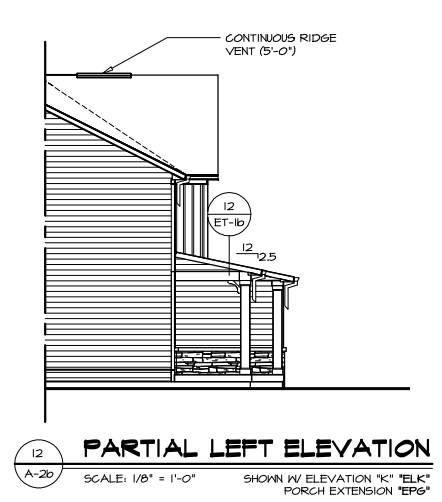
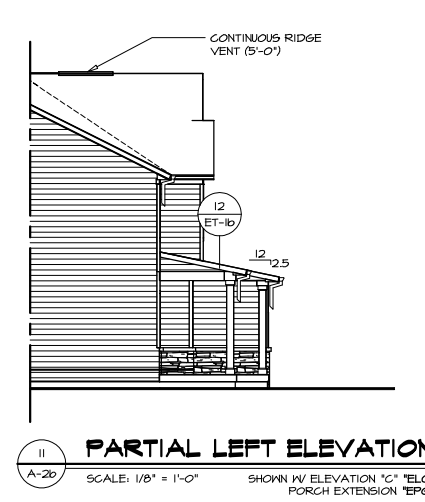
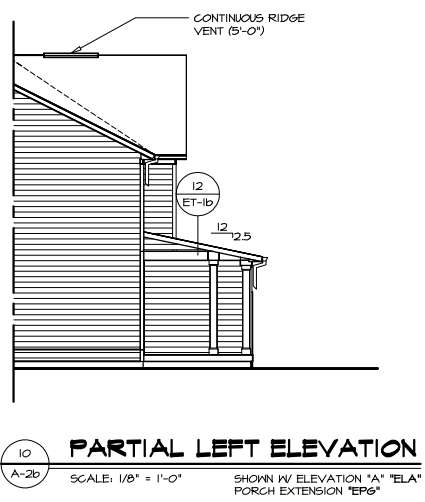
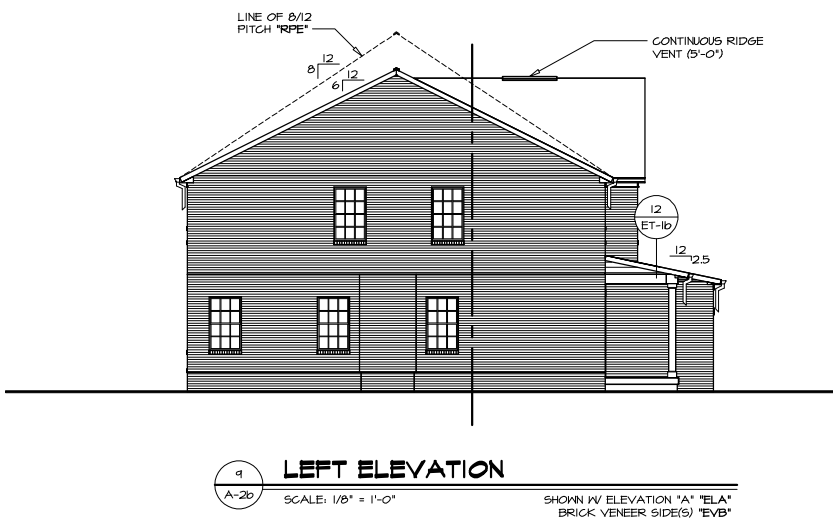
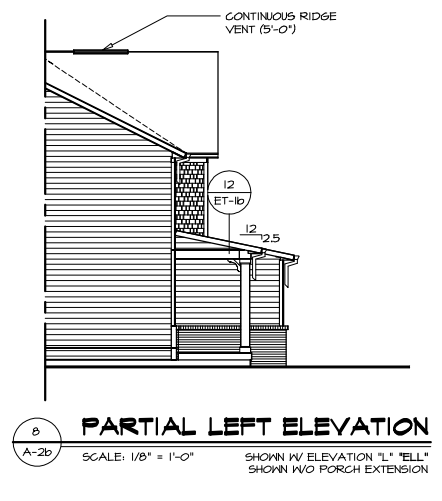
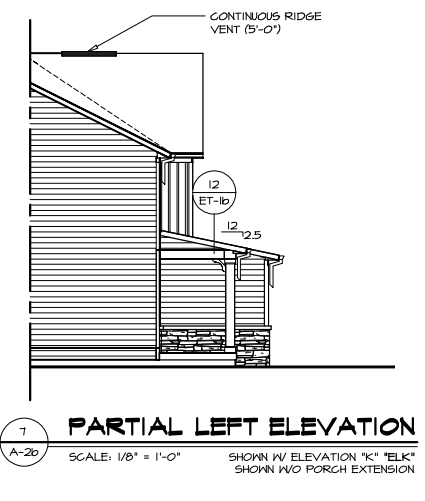
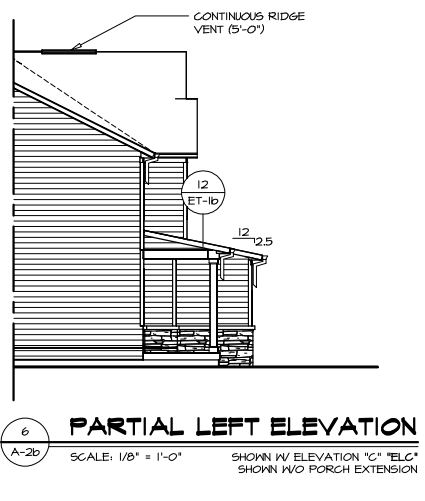
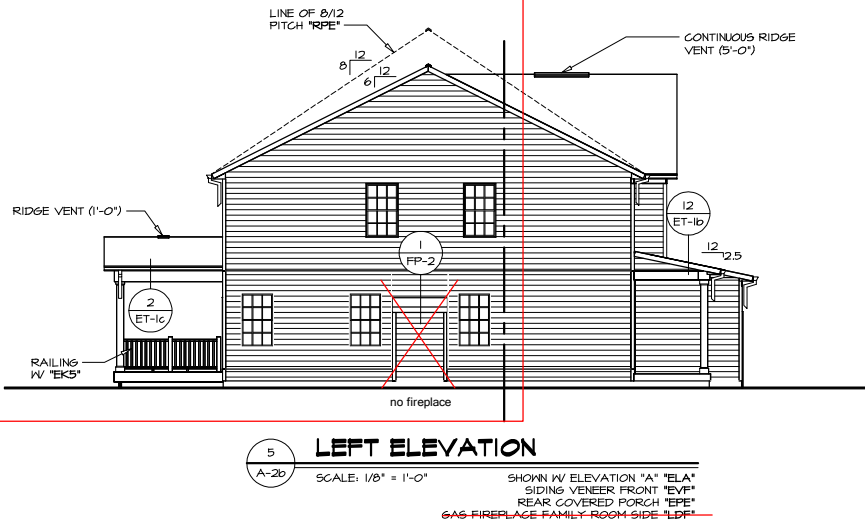
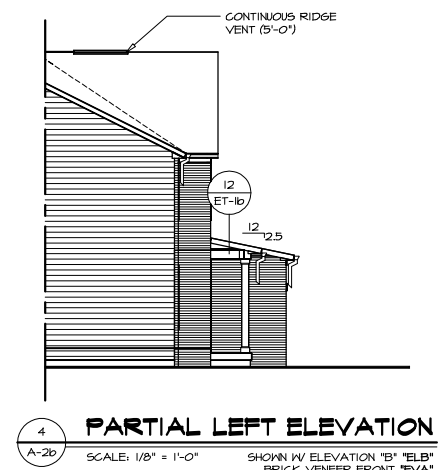
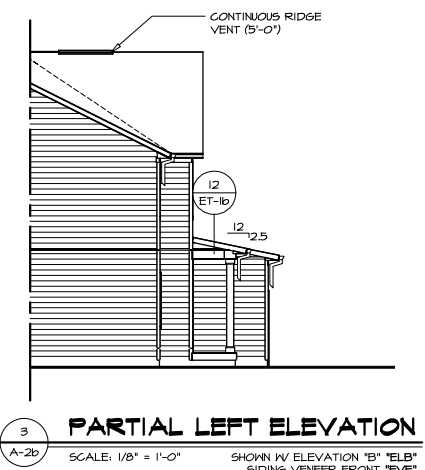
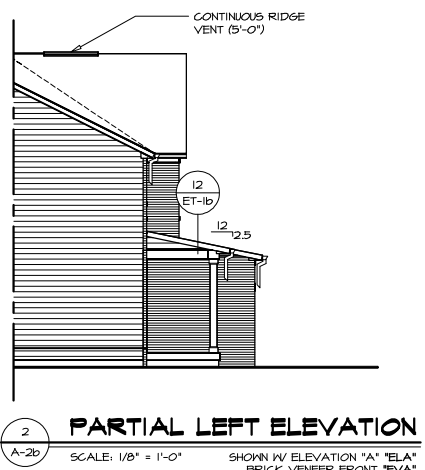
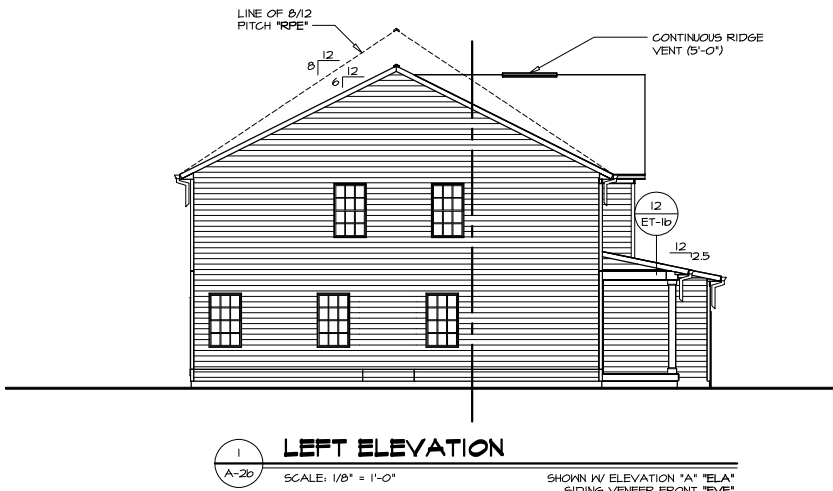


RIGHT ELEVATION

SCALE: 1/8" = 1'-0"

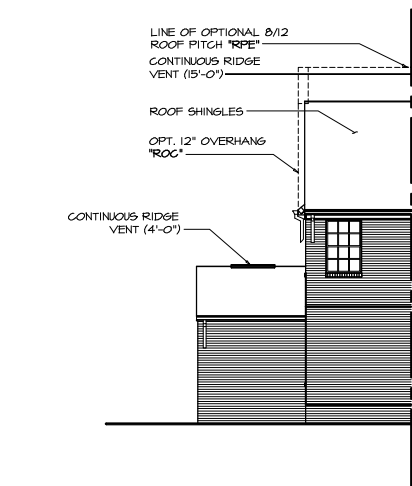
SHOWN W/ ELEVATION "A" "ELA"  
SIDING VENEER FRONT "EVP"



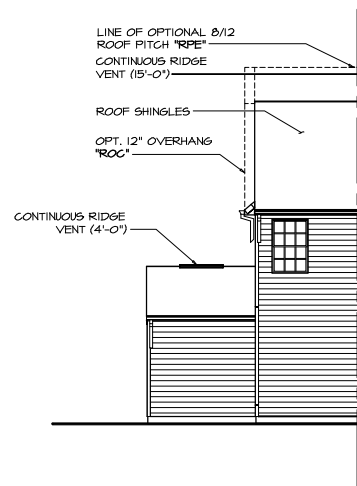


REMARKS	
REV. NO.	DATE
NVR, Inc. expressly reserves its copyright and other property rights in these plans. These plans are not to be reproduced, stored in a retrieval system, or used in any form or manner without the prior written consent of NVR, Inc.	
<b>NVR</b> NVR, Inc. 5285 Westview Drive, Suite 100 Frederick, MD 21703	
SET NO. HUD00	VERSION 01
RELEASE NO. ----	DRAWN BY SGA
DATE: 8/28/17	OPTION
SHEET NO. 17	
DRAWING TITLE LEFT ELEVATION	
OPTION DESCRIPTION	
A-2b	

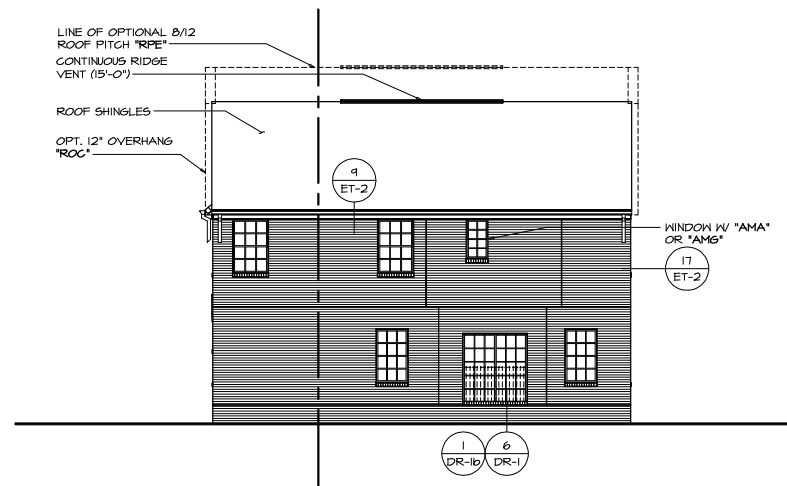
C:\NVR\Software\HUDSON\_HUD00\_01\_11285\Sheets\Master Set\Elevations\A-2b\_ELV\_LEFT.dwg 07/23/23 - 8:02 am



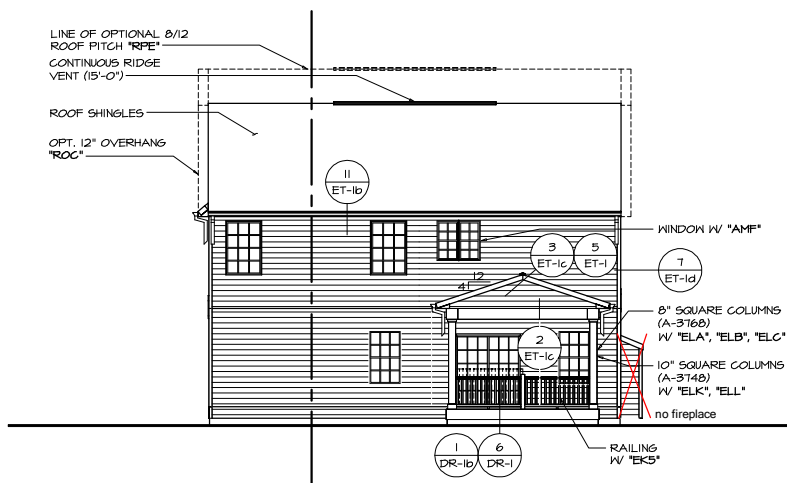
6 REAR ELEVATION  
A-2c SCALE: 1/8" = 1'-0" OPT. BRICK VENEER REAR "EVK"  
OPT. THREE CAR FRONT ENTRY GARAGE "GCI"



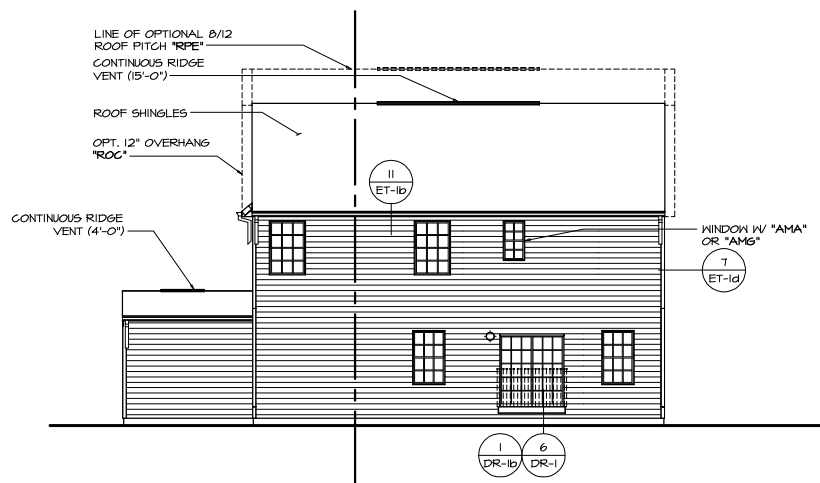
5 REAR ELEVATION  
A-2c SCALE: 1/8" = 1'-0" OPT. THREE CAR FRONT ENTRY GARAGE "GCI"



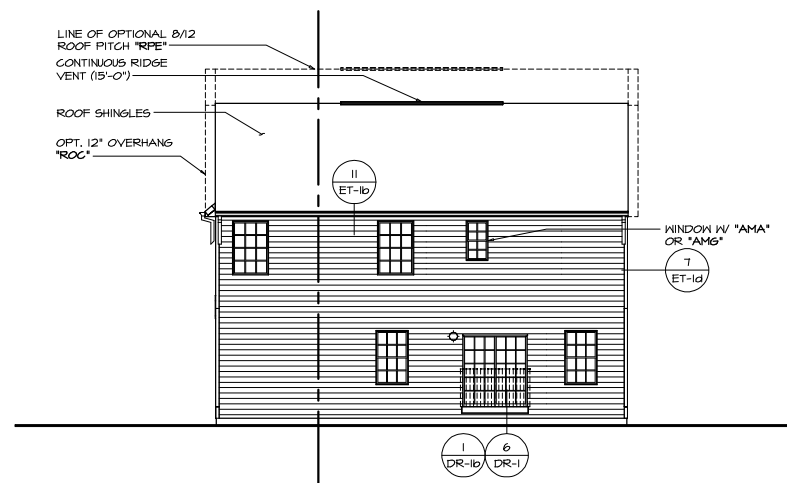
4 REAR ELEVATION  
A-2c SCALE: 1/8" = 1'-0" SHOWN W/ SLIDING GLASS DOOR DINETTE "DGT"  
SHOWN W/ OWNER'S BATHROOM SHOWER "AMA"  
OR OWNER'S BATH W/ ROMAN SHOWER W/ SEAT "AMS"  
OPT. BRICK VENEER REAR "EVK"



3 REAR ELEVATION  
A-2c SCALE: 1/8" = 1'-0" SHOWN W/ DOUBLE PATIO DOOR DINETTE "DPT"  
REAR COVERED PORCH "EPE"  
~~GAS FIREPLACE FAMILY ROOM SIDE "ELD"~~  
OWNER'S BATH W/ TUB AND SHOWER "AMP"



2 REAR ELEVATION  
A-2c SCALE: 1/8" = 1'-0" SHOWN W/ SLIDING GLASS DOOR DINETTE "DGT"  
THREE CAR FRONT ENTRY GARAGE "GCI"  
SHOWN W/ OWNER'S BATHROOM SHOWER "AMA"  
OR OWNER'S BATH W/ ROMAN SHOWER W/ SEAT "AMS"



1 REAR ELEVATION  
A-2c SCALE: 1/8" = 1'-0" SHOWN W/ SLIDING GLASS DOOR DINETTE "DGT"  
SHOWN W/ OWNER'S BATHROOM SHOWER "AMA"  
OR OWNER'S BATH W/ ROMAN SHOWER W/ SEAT "AMS"

REMARKS

REV. NO. DATE

NVR, Inc. expressly reserves its copyright and other property rights in these plans. These plans are not to be reproduced, stored in a retrieval system, or used in any form or by any means, electronic, mechanical, photocopying, recording, or by any information storage and retrieval system, without the prior written consent of NVR, Inc.

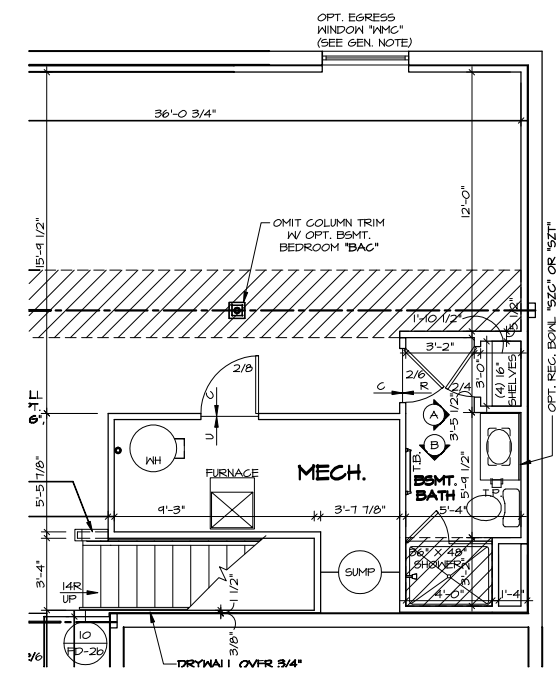
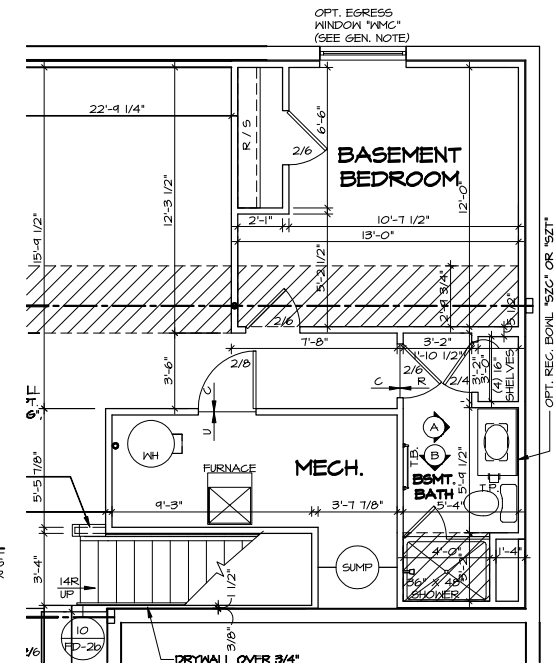
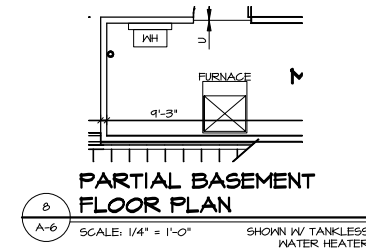
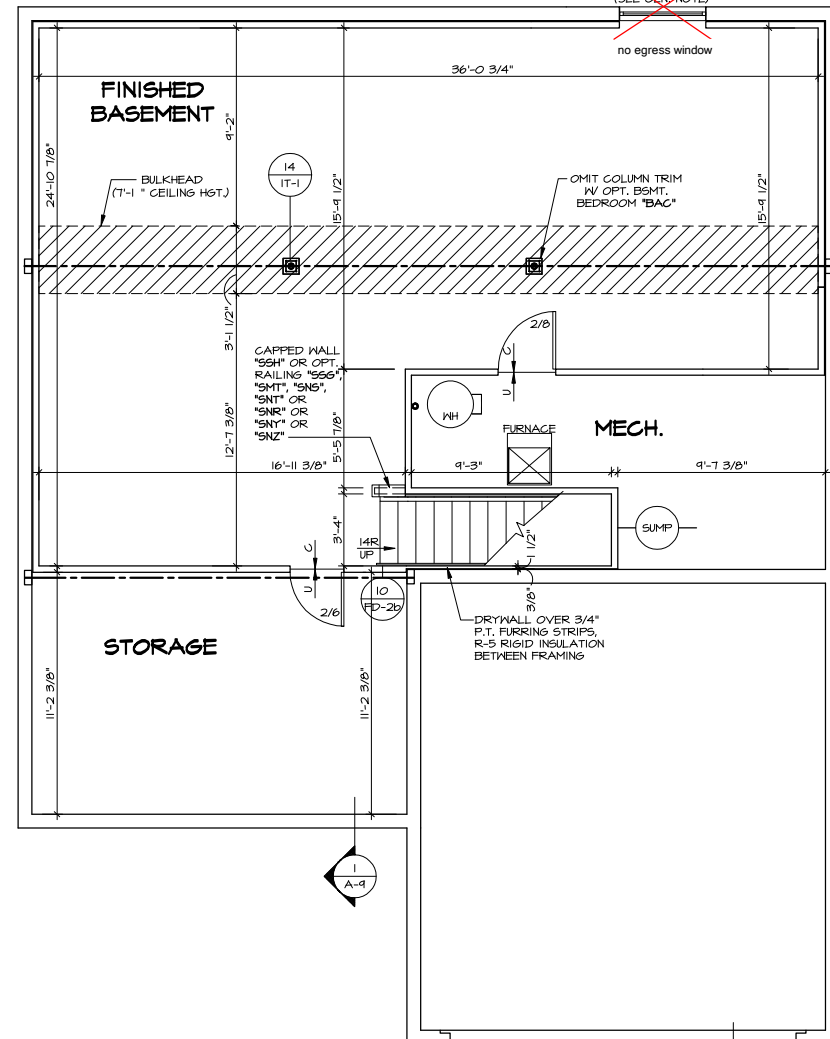
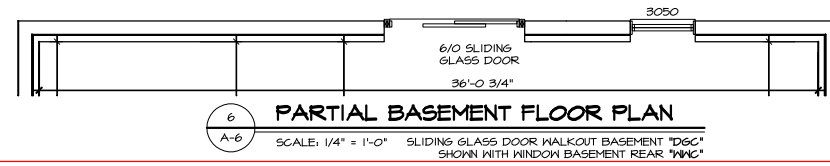
**NVR**  
NVR, Inc.  
5285 Westview Drive, Suite 100  
Frederick, MD 21703

SET NO. HUD00  
VERSION 01  
RELEASE NO. ----  
DRAWN BY SGA  
DATE: 8/28/17  
OPTION

SHEET NO. NOVEL HUDSON  
DRAWING TITLE  
REAR ELEVATION  
OPTION DESCRIPTION

A-2c  
18











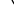
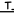



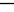



3  
A-6

**PARTIAL BASEMENT FLOOR PLAN**

SCALE: 1/4" = 1'-0"

WET BAR BASEMENT "VAZ"

# LEGEND

	BEARING WALL
	NON BEARING WALL
	MASONRY WALL
	INDICATES BEARING FROM POINT-LOAD ABOVE
	JACKS
	BEAM/HEADER
	FOOTING/THICKENED SLAB
	STEEL COLUMN
	TRUSS TIE DOWN
	PORTAL FRAME
	JOIST/TRUSS
	LVL
	ENGINEERING PAGE NUMBER
	WINDOW/DOOR TAG
	PRECAST LINTEL TAG

-SEE FA DETAILS FOR FIRE ASSEMBLIES  
-SEE FC DETAILS FOR FRAMING CONNECTORS AND MATERIAL USAGE

**BASEMENT FLOOR PLAN**

SCALE: 1/4" = 1'-0" ELEVATION A "ELA"

2  
A-6

**PARTIAL BASEMENT FLOOR PLAN**

SCALE: 1/4" = 1'-0"

ELEVATION B "ELB"

5  
A-6

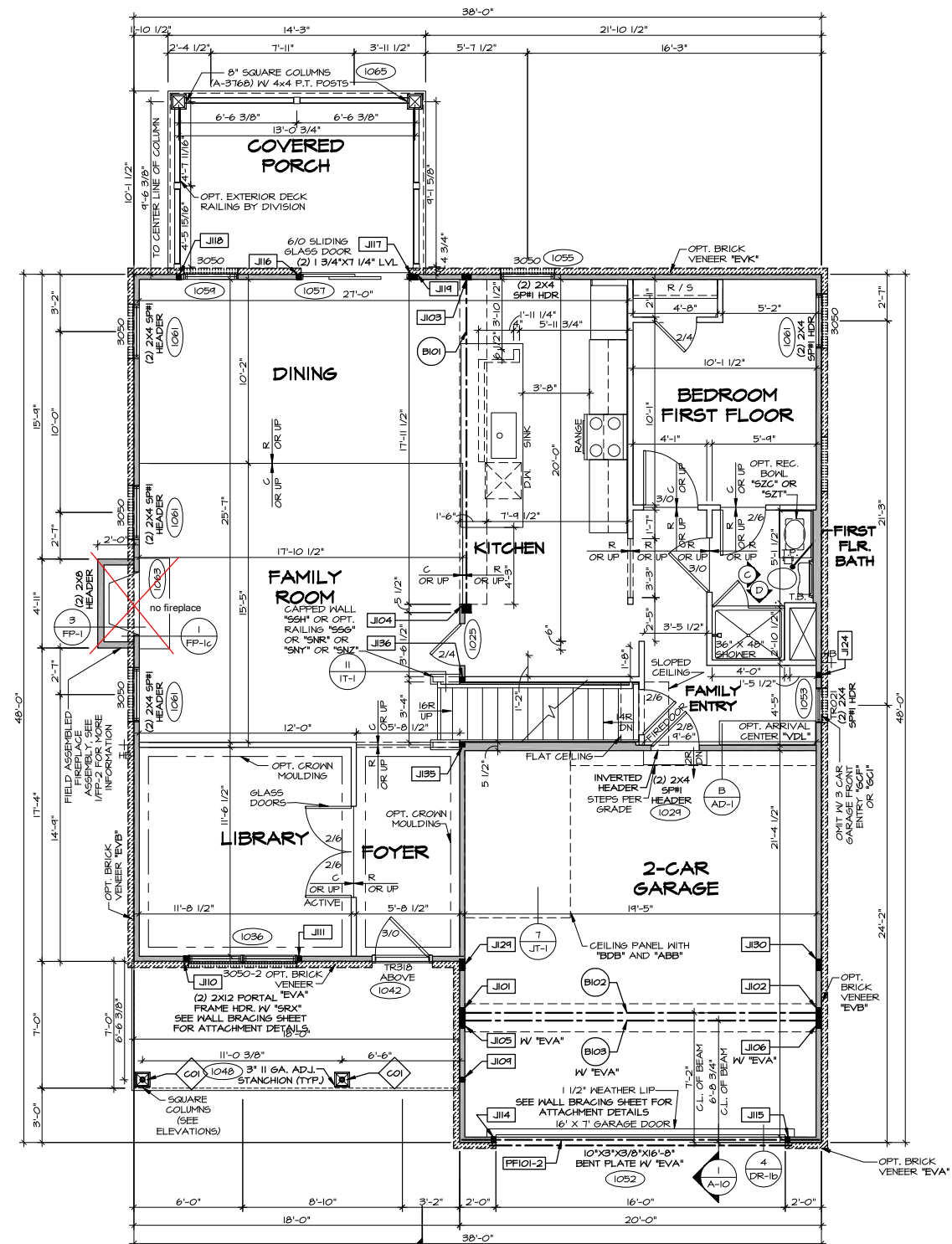
**PARTIAL BASEMENT FLOOR PLAN**

SCALE: 1/4" = 1'-0"      ONE BEDROOM BASEMENT "BAC"  
WINDOW EGRESS BASEMENT BEDROOM "WMB"

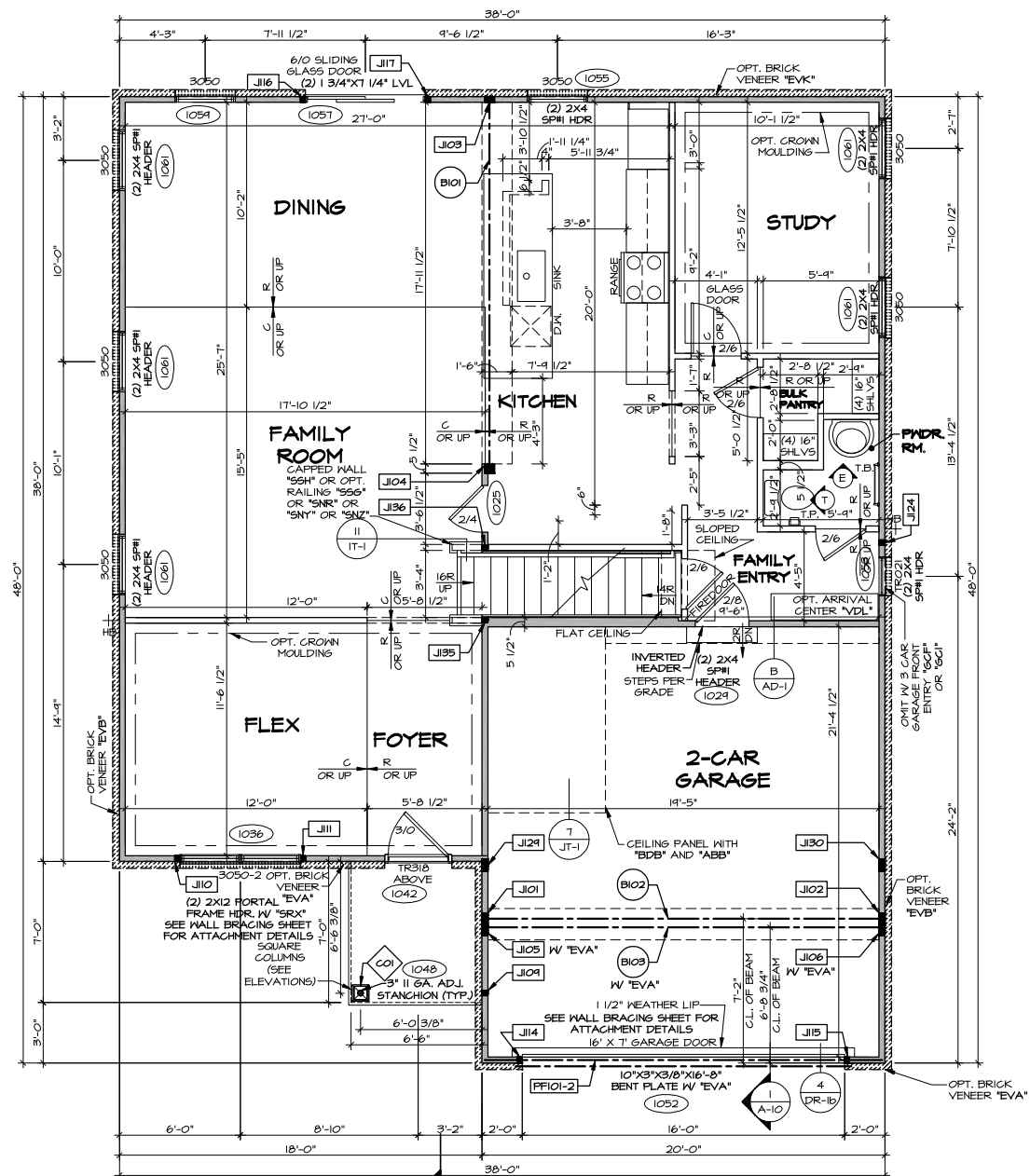
**PARTIAL BASEMENT FLOOR PLAN**

SCALE: 1/4" = 1'-0"      BASEMENT BATHROOM SHOWER \*AEB\*  
WINDOW EGRESS BASEMENT \*WMC\*

[illegible]





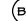
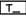


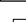




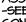
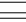


1/4" = 1'-0"	ELEVATION A	"ELA"
	FULL FRONT PORCH	"EPA"
	BEDROOM FIRST FLOOR	"BAR"
	LIBRARY	"MAT"
	REAR COVERED PORCH	"EPE"
	<del>GAS FIREPLACE FAMILY ROOM SIDE</del>	<del>"LDF"</del>
	APPLIANCE LAYOUT W/ RANGE AND WALL OVEN	"KAG"



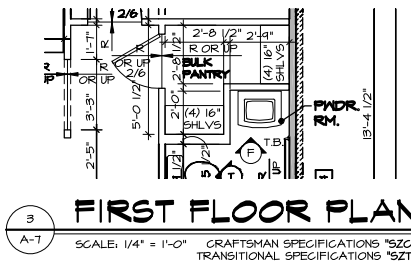
ELEVATION A "ELA"  
STUDY "MAS"  
FLEX ROOM "MCF"  
APPLIANCE LAYOUT W/ RANGE "KAA"  
SHOWN W/ NVR SPECIFICATIONS "SZB"

- NOTES:**
1. SEE GENERAL NOTES (N-1) FOR ADDITIONAL INFORMATION.
  2. SCHEDULES (N-2)
  3. LVL NAILING SCHEDULE (N-1)

- # LEGEND
- |   |   |
|---|---|
|  | BEARING WALL                            |
|  | NON BEARING WALL                        |
|  | MASONRY WALL                            |
|  | INDICATES BEARING FROM POINT-LOAD ABOVE |
|  | JACKS                                   |
|  | BEAM/HEADER                             |
|  | FOOTINGS/THICKENED SLAB                 |
|  | STEEL COLUMN                            |
|  | TRUSS TIE DOWN                          |
|  | PORTAL FRAME                            |
|  | JOIST/TRUSS                             |
|  | LVL                                     |
|  | ENGINEERING PAGE NUMBER                 |
|  | WINDOW/DOOR TAG                         |
|  | PRECAST LINTEL TAG                      |
- SEE FA DETAILS FOR FIRE ASSEMBLIES
- SEE FC DETAILS FOR FRAMING CONNECTORS AND MATERIAL USAGE

**NOTE:**  
EXTERIOR WALLS DRAWN TO FRAMING  
WIDTH, EXTERIOR SHEATHING IS NOT  
INCLUDED IN WALL THICKNESS.

ALL WINDOWS HAVE 7'-0 1/2" HEADER  
HEIGHT UNLESS OTHERWISE NOTED



© NVR, Inc., expressly reserves its copyright and other property rights in these plans. These plans are not to be reproduced, changed, or copied in any form or manner whatsoever, nor are they to be assigned to any third party, without first obtaining the expressed written consent of NVR, Inc.

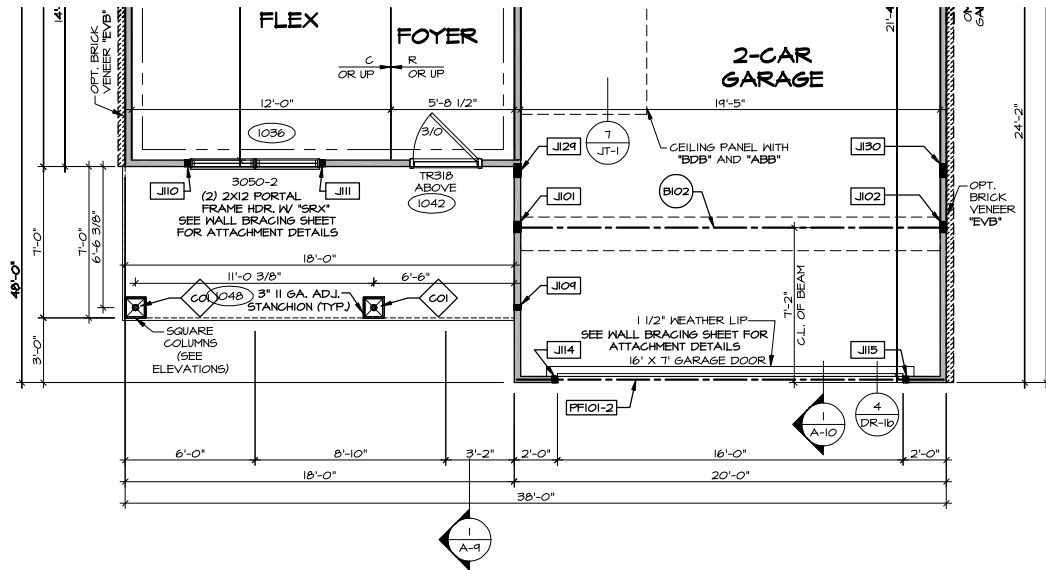
**NVR**  
NVR, Inc.  
2285 Westview Drive, Suite 100  
Frederick, MD 21703

SET NO. HUDOO  
 VERSION OI  
 RELEASE NO. ---  
 DRAWN BY SKB  
 DATE: 6/21/17  
 OPTION  
 FBA

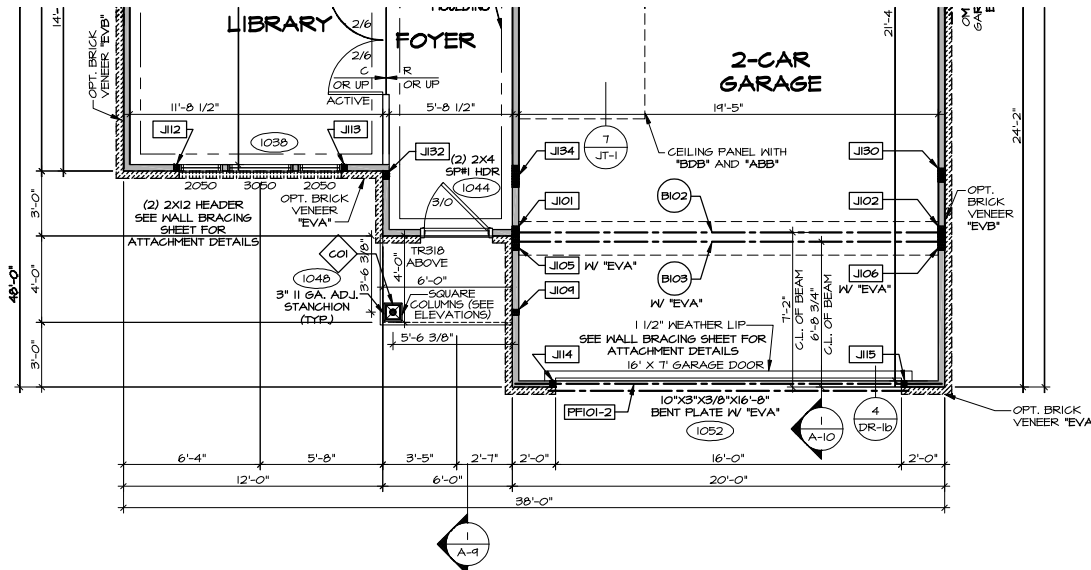
SHEET NO.	A-7	MODEL	HUDSON
		DRAWING TITLE	FIRST FLOOR PLAN
		OPTION DESCRIPTION	FULL BASEMENT FOUNDATION

4

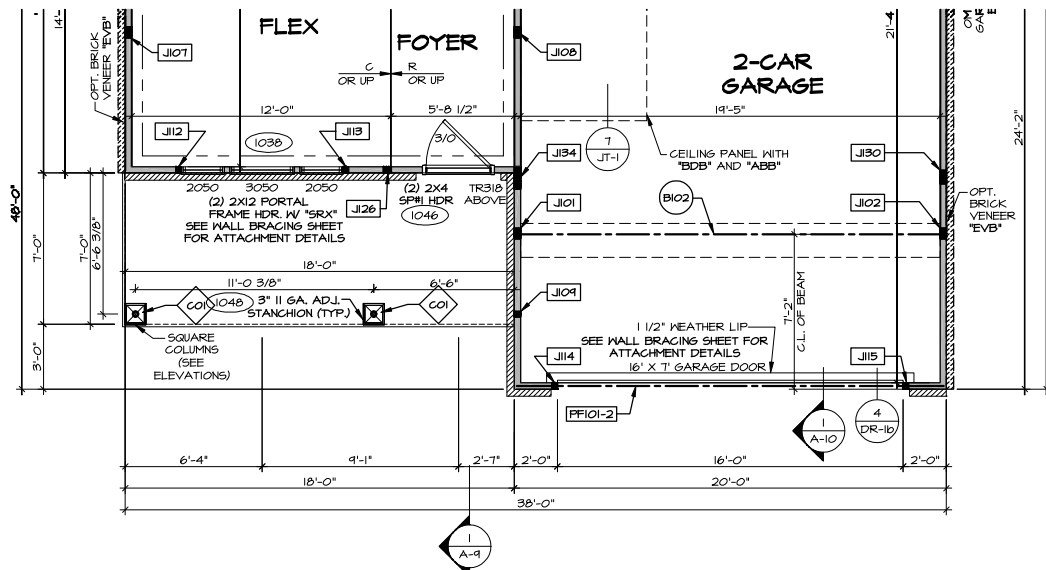
C:\NVR Solves\HUDSON\_HUD00\_01\_11285\Sheets\Master Set\Fir1 Floor Plan\A-7 PLAN1\_FBA.dwg 04/23/25 - 8:05 am



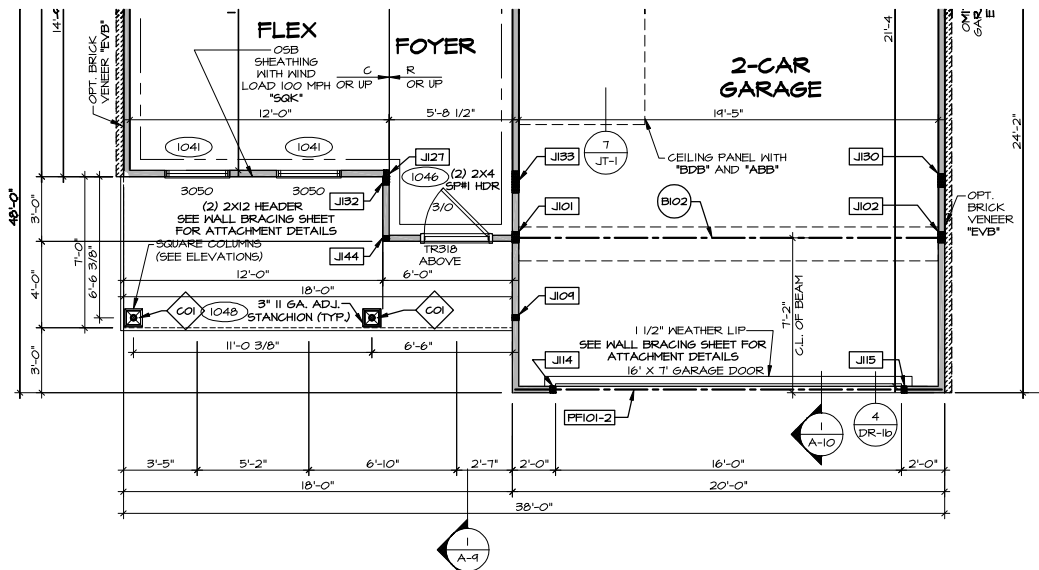
3 PARTIAL FIRST FLOOR PLAN  
SCALE: 1/4" = 1'-0"  
ELEVATION K "ELK"



1 PARTIAL FIRST FLOOR PLAN  
SCALE: 1/4" = 1'-0"  
ELEVATION B "ELB"



4 PARTIAL FIRST FLOOR PLAN  
SCALE: 1/4" = 1'-0"  
ELEVATION L "ELL"



2 PARTIAL FIRST FLOOR PLAN  
SCALE: 1/4" = 1'-0"  
ELEVATION C "ELC"

- NOTES:**
- SEE GENERAL NOTES (N-1) FOR ADDITIONAL INFORMATION.
  - SCHEDULES (N-2)
  - LVL NAILING SCHEDULE (N-1)

- LEGEND**
- BEARING WALL
  - NON BEARING WALL
  - MASONRY WALL
  - INDICATES BEARING FROM POINT-LOAD ABOVE
  - JACKS
  - BEAM/HEADER
  - FOOTING/THICKENED SLAB
  - STEEL COLUMN
  - TRUSS TIE DOWN
  - PORTAL FRAME
  - JOIST/TRUSS
  - LVL
  - ENGINEERING PAGE NUMBER
  - WINDOW/DOOR TAG
  - PRECAST LINTEL TAG
  - SEE FA DETAILS FOR FIRE ASSEMBLIES
  - SEE FC DETAILS FOR FRAMING CONNECTORS AND MATERIAL USAGE

**NOTE:**  
EXTERIOR WALLS DRAWN TO FRAMING WIDTH, EXTERIOR SHEATHING IS NOT INCLUDED IN WALL THICKNESS.

ALL WINDOWS HAVE 1'-0 1/2" HEADER HEIGHT UNLESS OTHERWISE NOTED

NVR, Inc. expressly reserves its copyright and other property rights in these plans. These plans are not to be reproduced, stored in a retrieval system, or used in any form or by any means, electronic, mechanical, photocopying, recording, or by any information storage and retrieval system, without the prior written consent of NVR, Inc.

**NVR**  
NVR, Inc.  
5285 Westview Drive, Suite 100  
Frederick, MD 21703

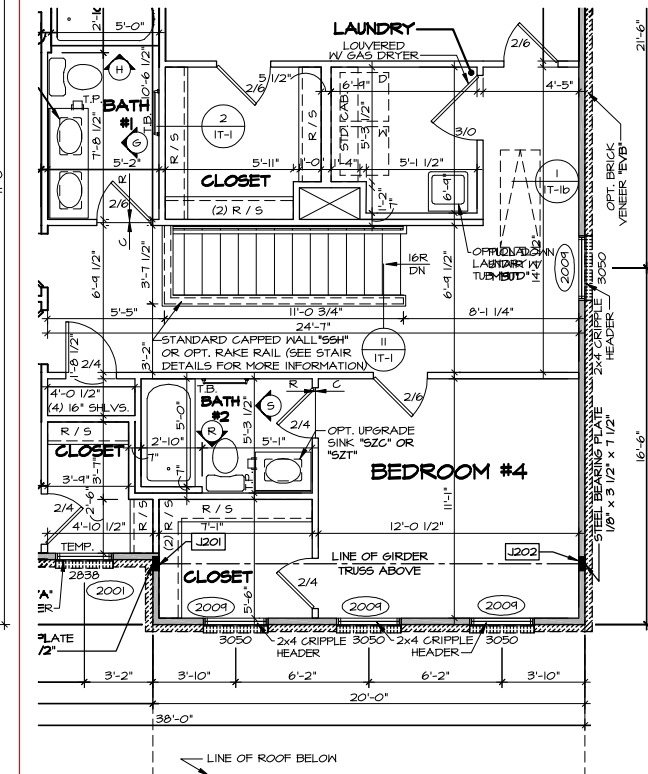
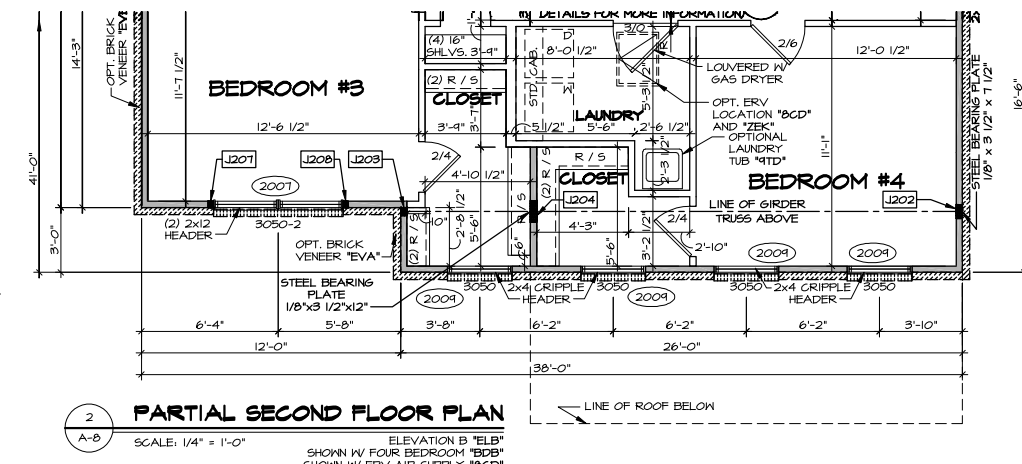
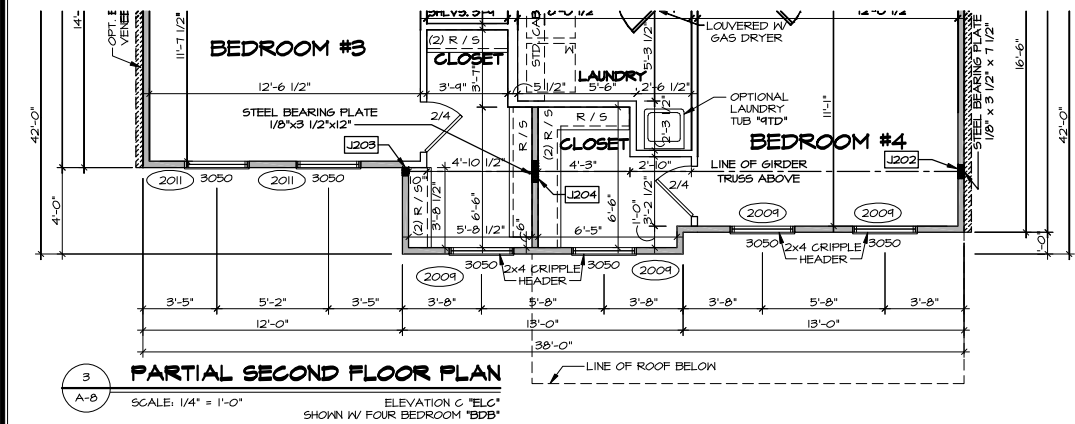
SET NO. HUD00  
VERSION 01  
RELEASE NO. ----  
DRAWN BY SKB  
DATE: 6/2/17  
OPTION  
ELB, ELC  
ELL, ELL

SHEET NO.  
**A-7b**

NOBEL HUDSON  
DRAWING TITLE  
PARTIAL FIRST FLOOR ELEVATION  
OPTION DESCRIPTION  
ELEVATIONS "B", "C", "K", "L"

56





SHEET NO.	MODEL	SET NO.
	<b>HUDSON</b>	VERSION 01
<b>A-8</b>	DRAWING TITLE	RELEASE NO.
	SECOND FLOOR PLAN	DRAWN BY SGA
	OPTION	DATE: 12/13/17
	OPTION DESCRIPTION	OPTION
	FULL BASEMENT FOUNDATION	FBA
	FOUR BEDROOM	FB2B
	BATH #2	ABB