

Red Truck Bakery

Proposed Exterior Improvements

wood + starr

May 2026



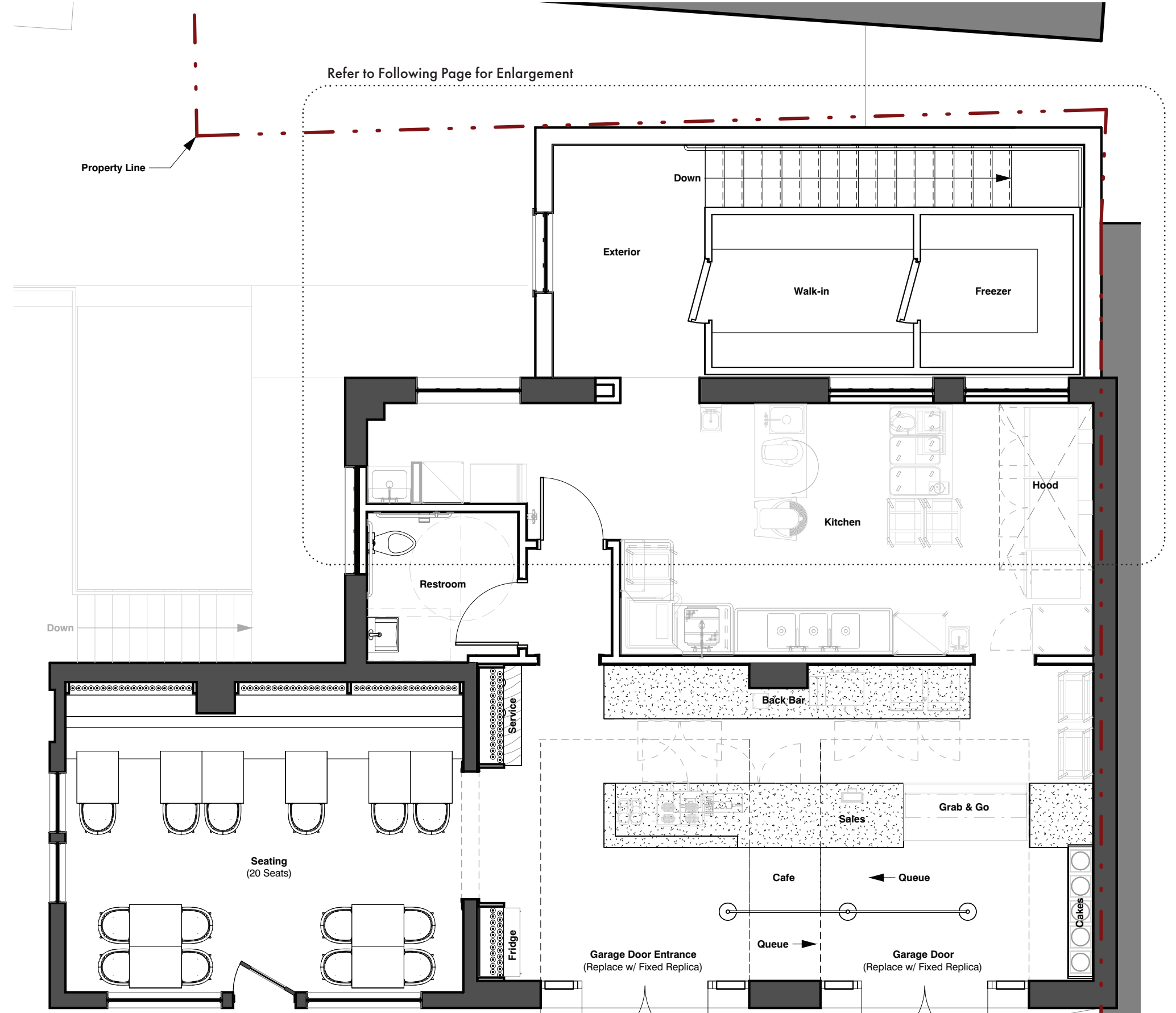
- Existing garage doors are in poor condition and perform poorly.
- Existing entry feels awkward and should be better integrated.
- The large paved area limits the site's sense of place.
- Seating, planting, color, and the red truck can make the site more memorable.



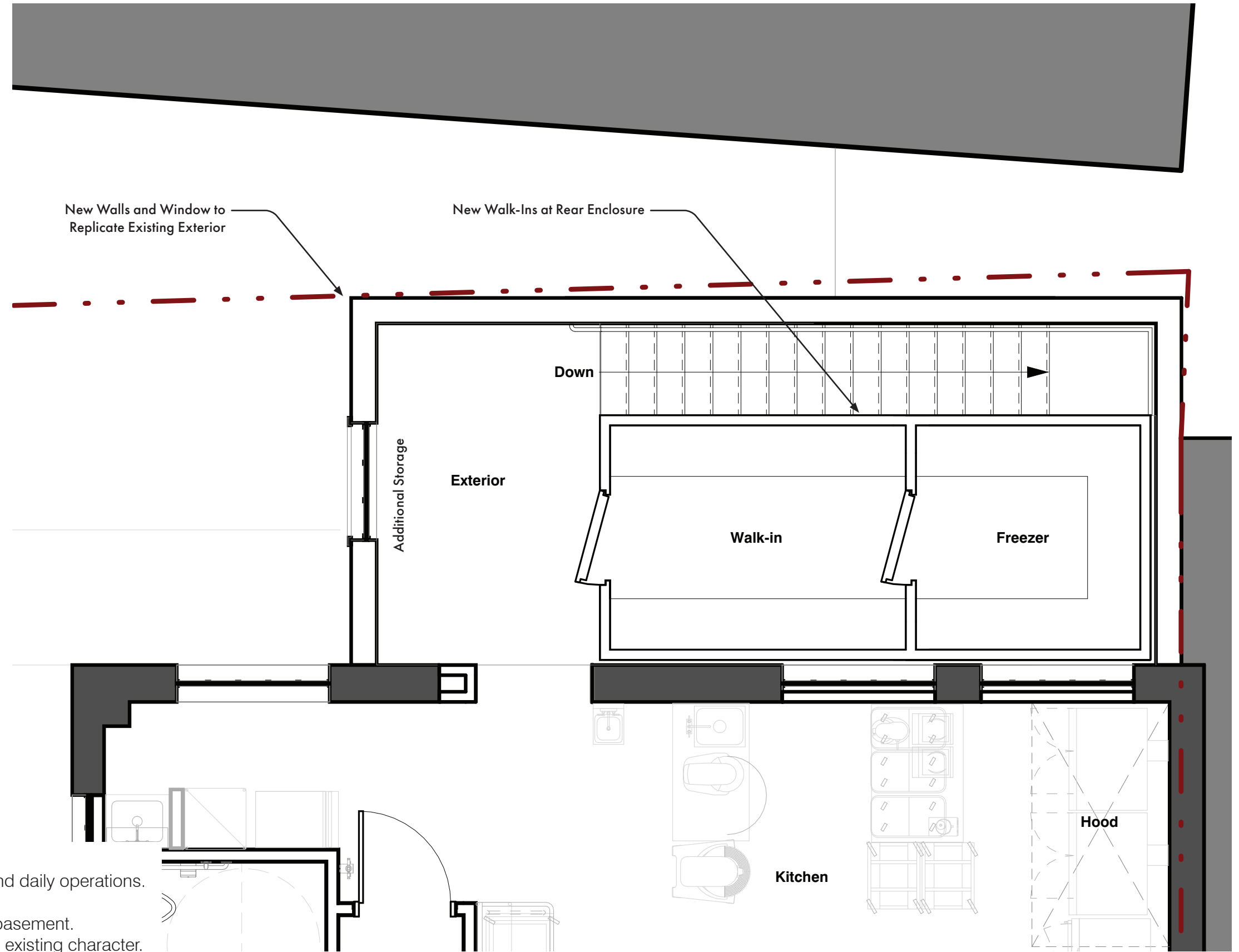
- Existing garage doors are in poor condition and perform poorly.
- Existing entry feels awkward and should be better integrated.
- Improvements must respect the historic garage-door openings.
- Seating, planting, color, and the red truck can make the site more memorable.

Existing Exterior

Red Truck Bakery



- Interior seating increased to approximately 20 seats.
- Entry sequence and circulation are clarified.
- Restroom is appropriately relocated and sized..
- Interior areas fhave hierarchy with a right-sized kitchen and support.
- Needed cold storage is added with appropriate proximity to kitchen.
- Basement storage access is made efficient through rear stair acces.

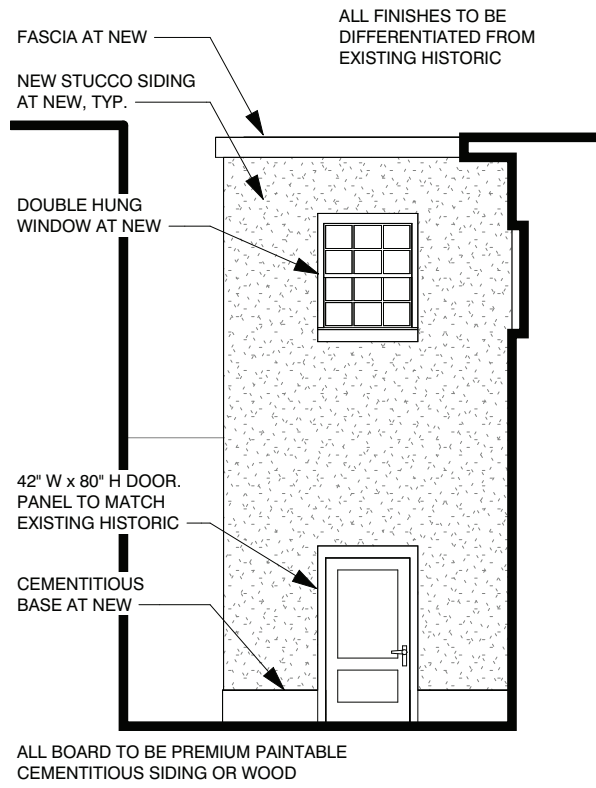


- Rear enclosure improvements support interior flow and daily operations.
- New walk-ins are located near the kitchen.
- Rear stair improves access to kitchen, storage, and basement.
- New rear walls and windows to be differentiated from existing character.
- Rear work improves function while remaining secondary to the frontage.

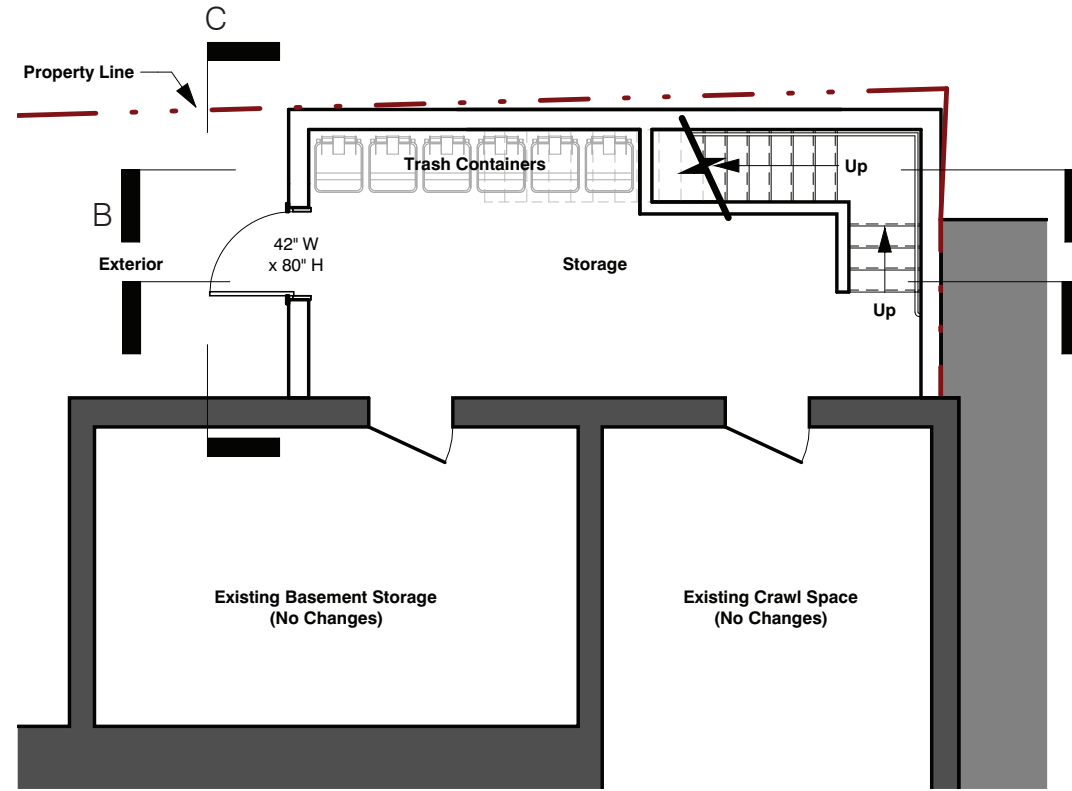
Enlarged Plan

Current Plan at Rear

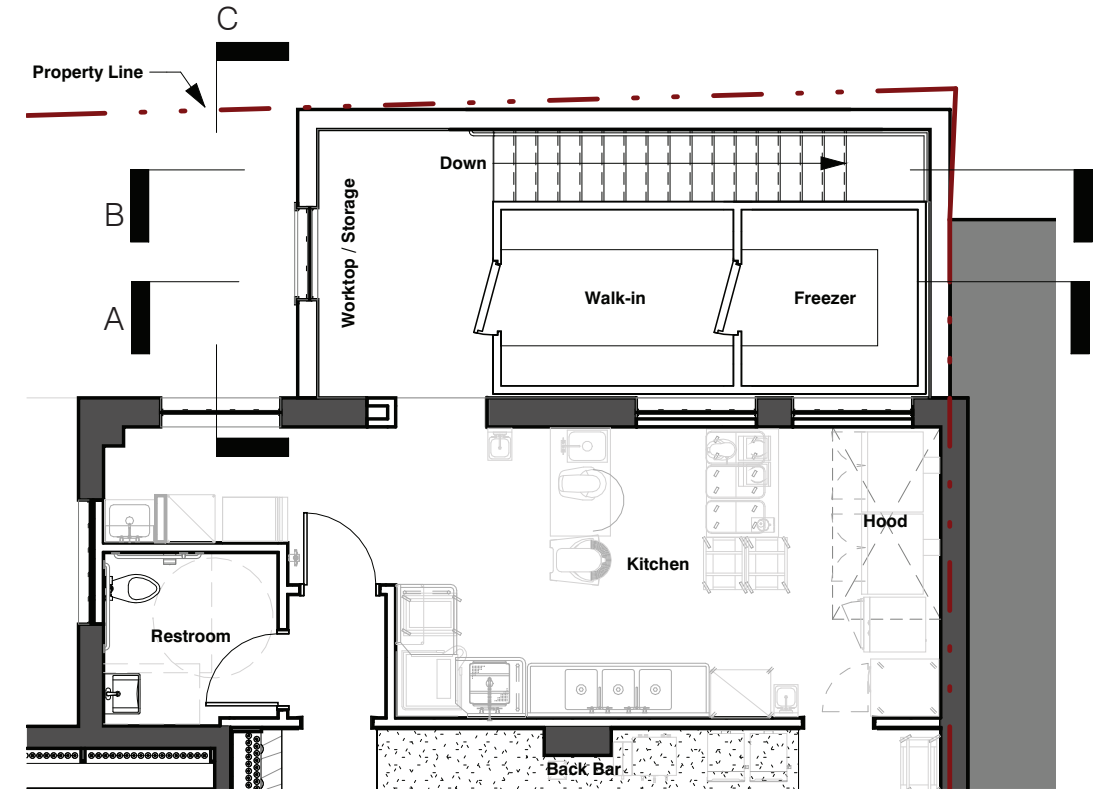
Red Truck Bakery



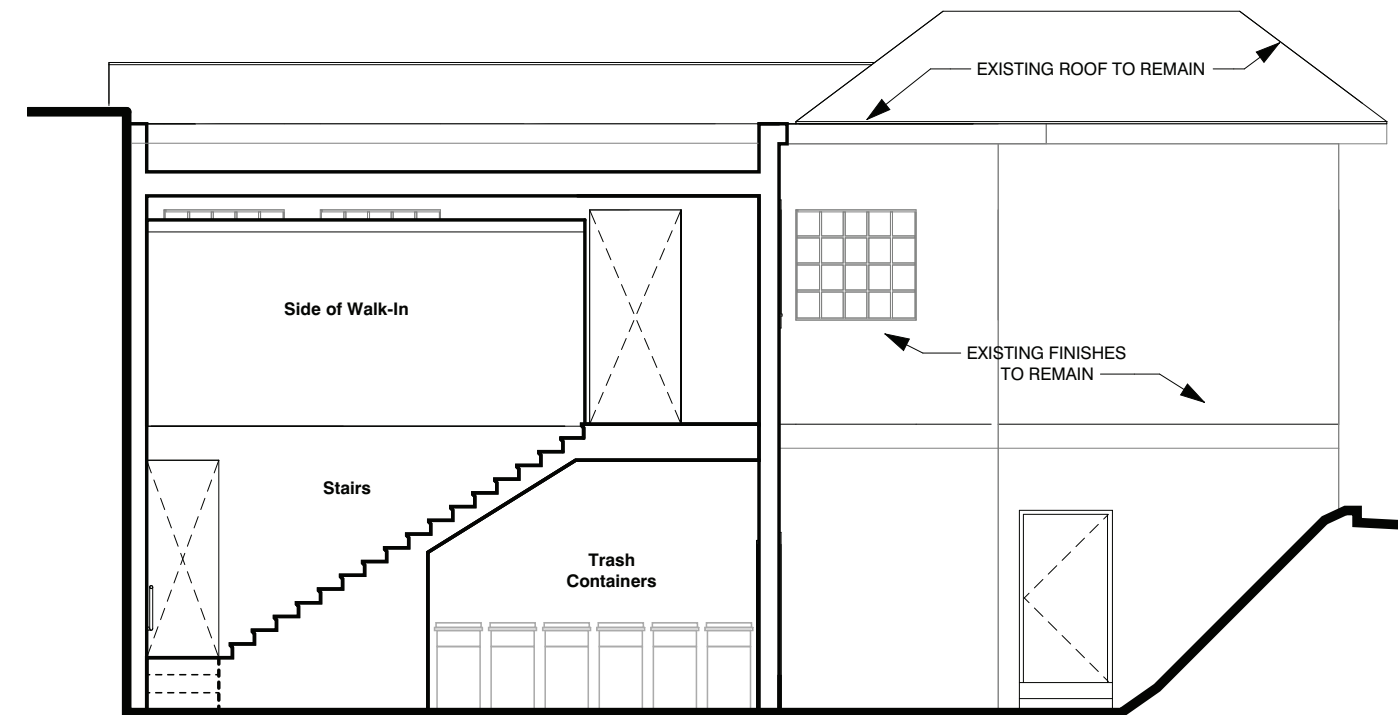
Section C



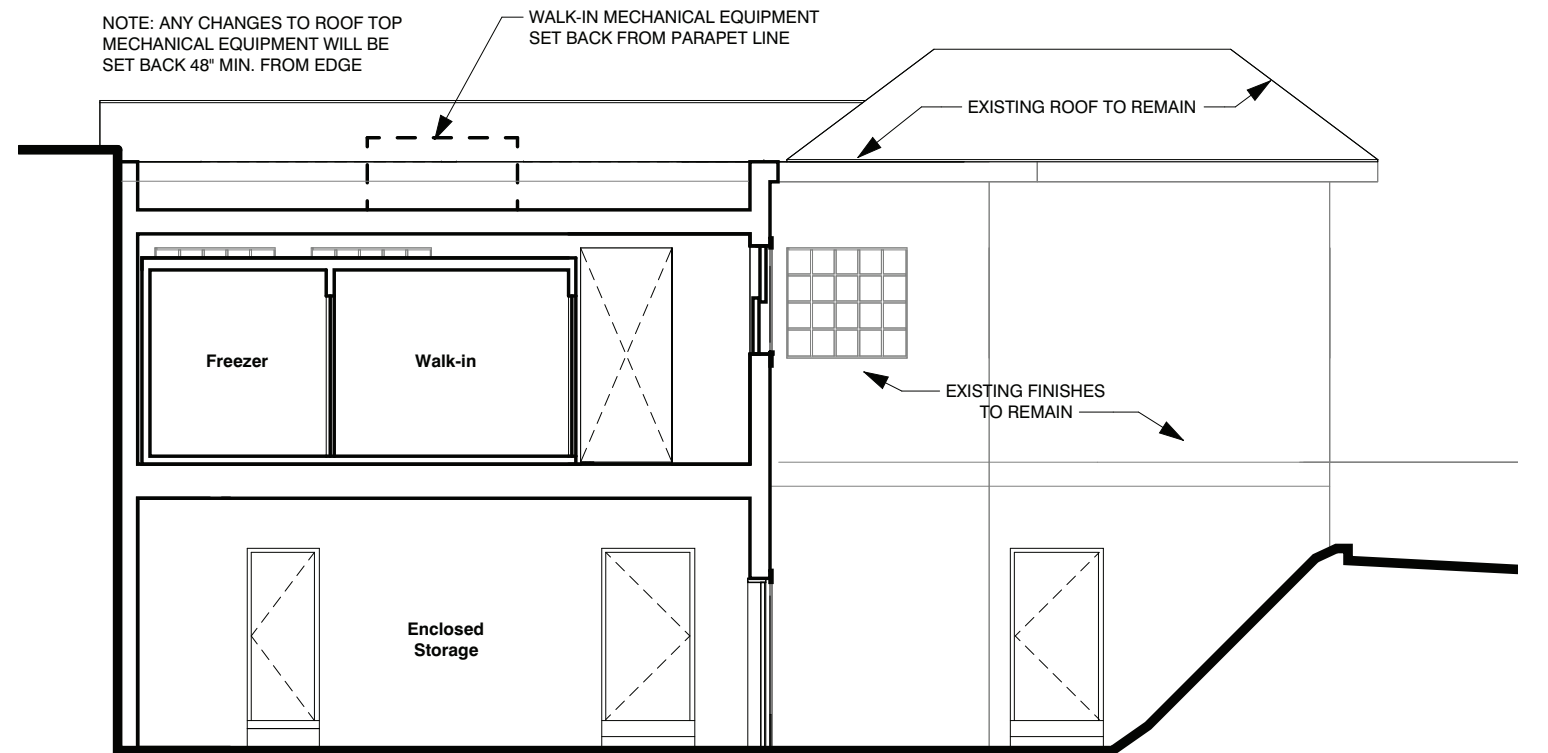
Basement Level Plan (At Rear Grade)



First Level Plan (At Front Grade)



Section B



Section A

Rear Improvements

Scale: 1/8" = 1'-0"



Rendered Perspective
Rear Improvements from the Alley and Ashby

Red Truck Bakery

DELIVERIES AT REAR DRIVE

IMPROVE PARKING AREA WITH NEW STRIPING AND SIGNAGE. LIMIT EMPLOYEE PARKING IN THIS AREA WHERE POSSIBLE TO IMPROVE CUSTOMER ACCESS.

ADD PLANTING BEDS TO IMPROVE LOOK, ADD VISUAL INTEREST, AND FOCUS ATTENTION ON THE ENTRY

REPAINT THE EXTERIOR IN CONTEMPORARY, CONTRASTING COLORS. ADD NEW SIGNAGE ABOVE WITH CONCEALED DOWN LIGHTING

NEW ENCLOSURE FOR STAIR AND WALK-INS FOR EASE OF STORAGE ACCESS. CONCEAL WITH ARCHITECTURE CONTRASTING ADJACENT STRUCTURES

ELIMINATE A PARKING SPACE. TO IMPROVE THE EXTERIOR AREA, PAINT THE PAVEMENT HERE IN A VISUALLY ARRESTING WAY AND ADD PLANTERS TO IMPROVE SITE VISIBILITY, PROTECTION, AND COMFORT.

PAINT AT THE PARKING ENTRY WITH "WELCOME," "CAFE & BAKERY," OR SIMILAR REPAIR DIRECTIONAL ARROWS

ASHBY STREET

WATERLOO STREET

- Repaint the exterior and improve signage.
- Add planters throughout to soften the property.
- Improve parking area striping, signage, and visual cues.
- 8 spaces required (Including 1 Accessible Space)
- Enlarge and make the outdoor seating area permanent.

Site Plan

Current Plan and Concepts



This rendering was produced in part using AI and is intended as an artist's interpretation for discussion purposes only. Minor incongruities may exist, and the image should not be read as exact existing or proposed construction conditions.

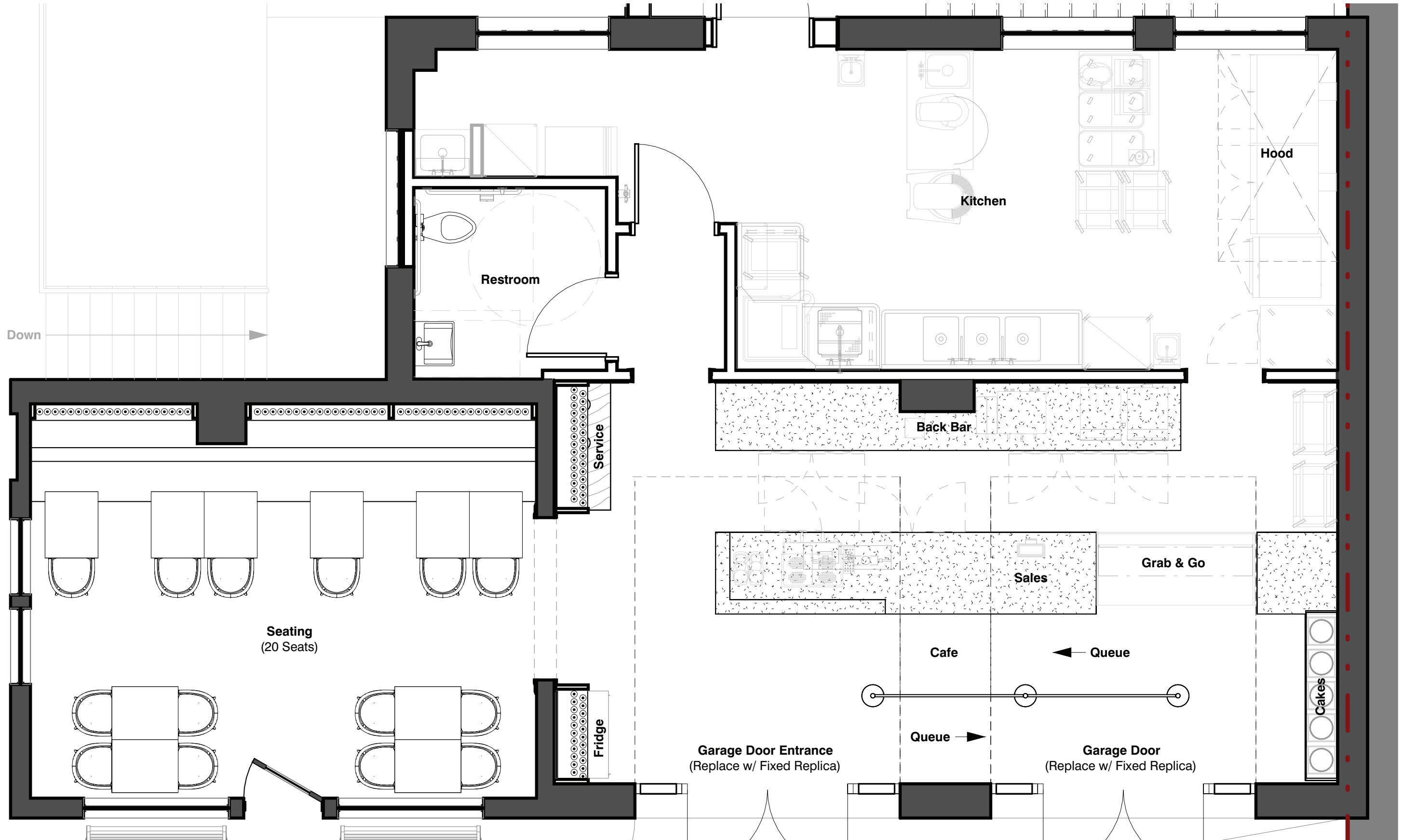
Red Truck Bakery

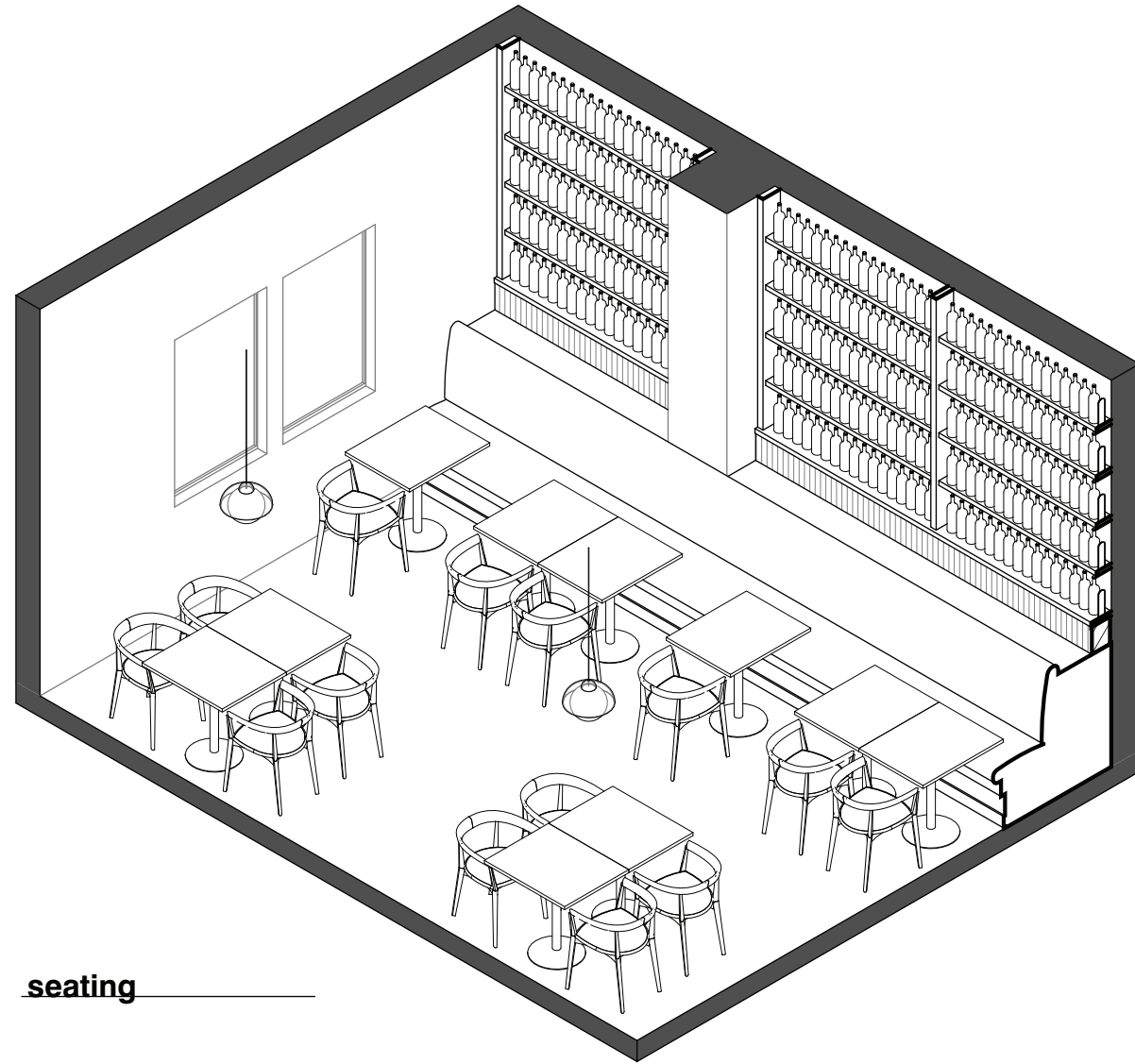
Proposed Interior Improvements

wood + starr

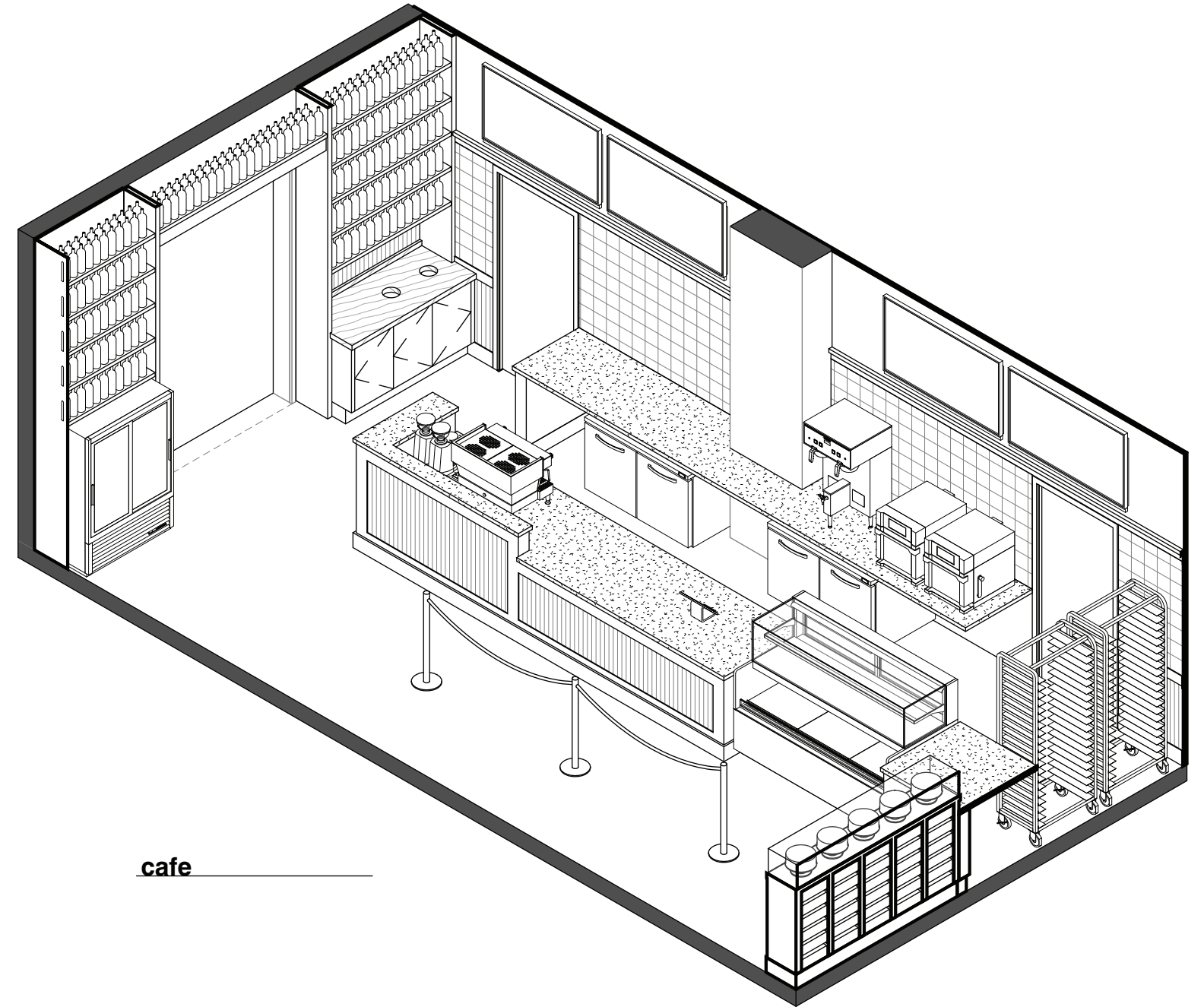
May 2026

Red Truck Bakery





seating



cafe



cafe



cafe



seating looking to cafe



cafe looking to seating



seating



seating

Red Truck Bakery

Warrenton

wood + starr
