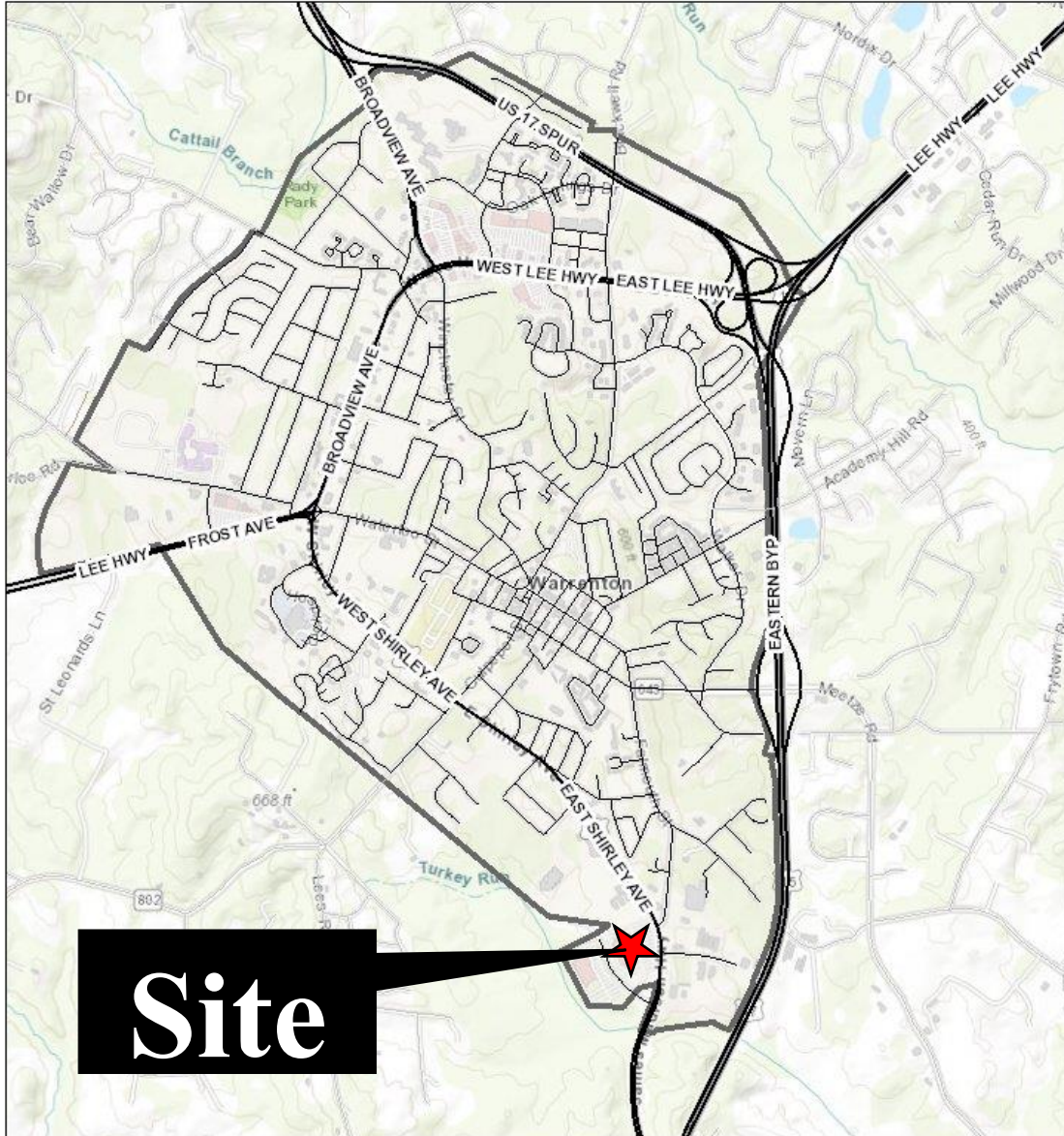


Attachment A – Maps, Elevations, & Photos

Vicinity Map:

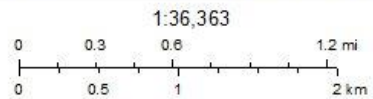
Town of Warrenton, VA WebGIS



July 27, 2017

Major Roads

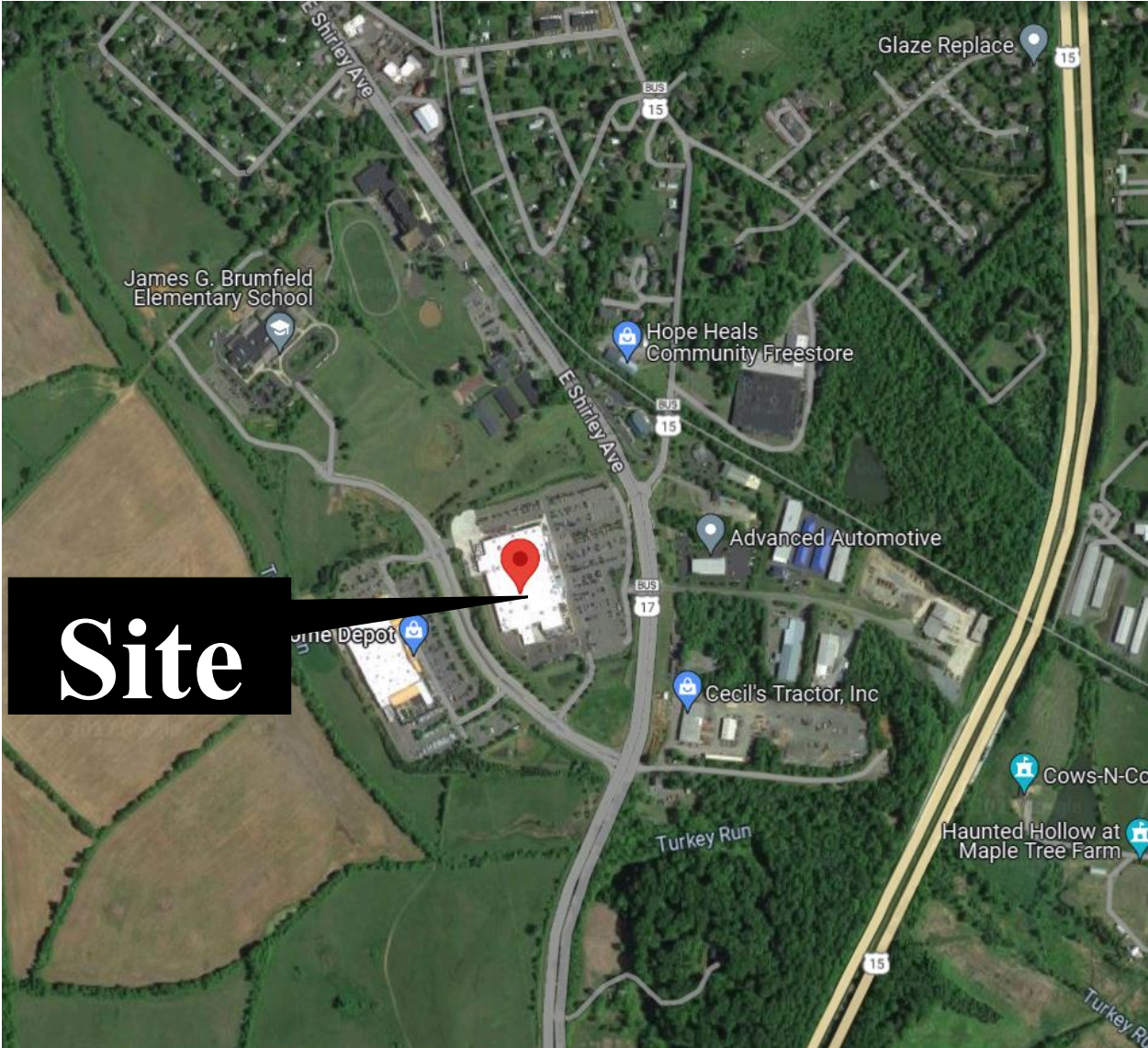
- | | |
|--|-------------|
| | MAJOR |
| | MINOR |
| | PRIVATE |
| | COUNTY |
| | LOCAL |
| | RAMP |
| | Town Limits |



Sources: Esri, HERE, DeLorme, Intermap, increment P Corp., GEBCO, USGS, FAO, NPS, NRCAN, GeoBase, IGN, Kadaster NL, Ordnance Survey, Esri Japan, METI, Esri China (Hong Kong), Swisstopo, MapmyIndia, © OpenStreetMap contributors, and the GIS User Community

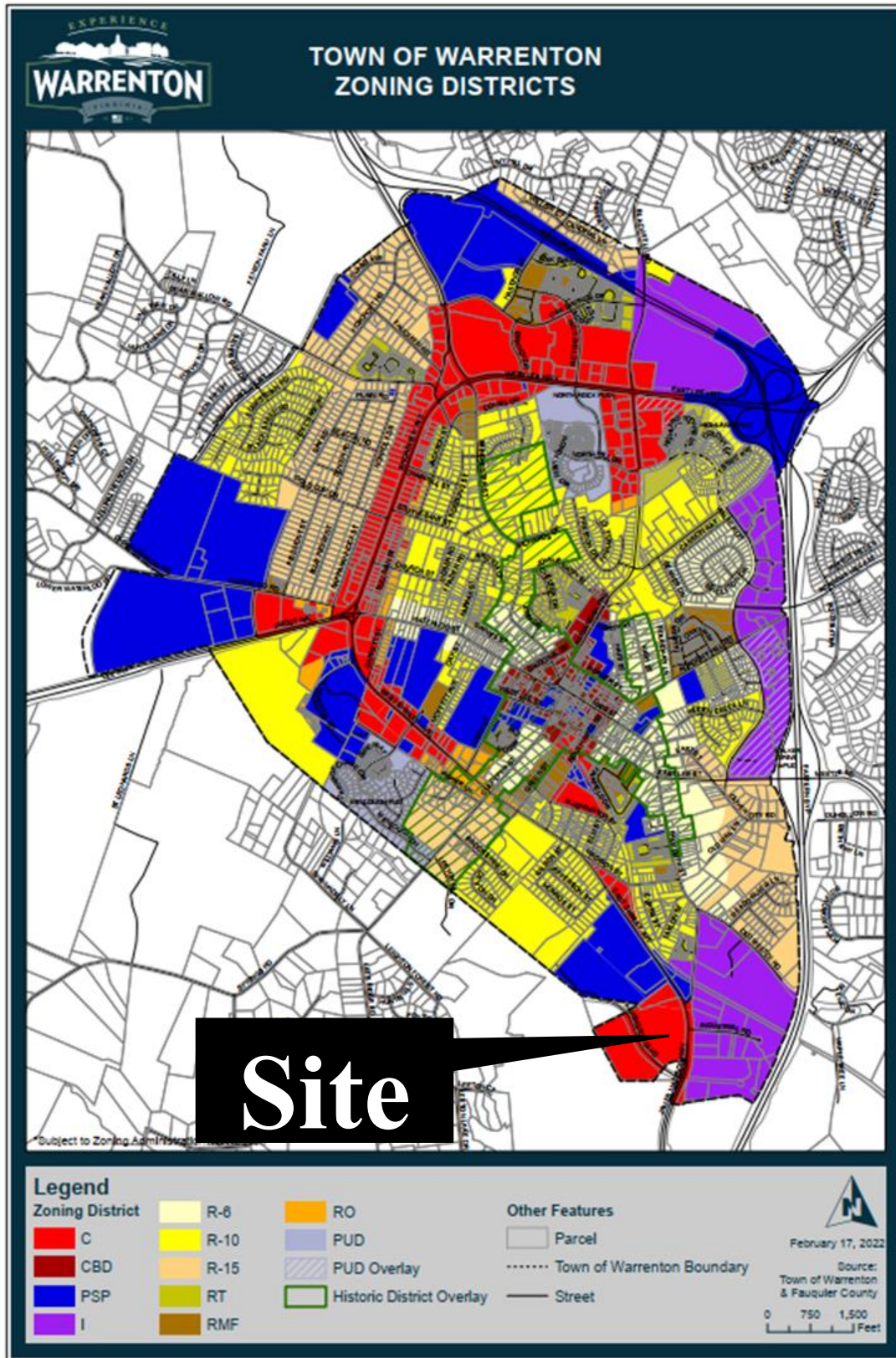
Attachment A – Maps, Elevations, & Photos

Aerial Map:



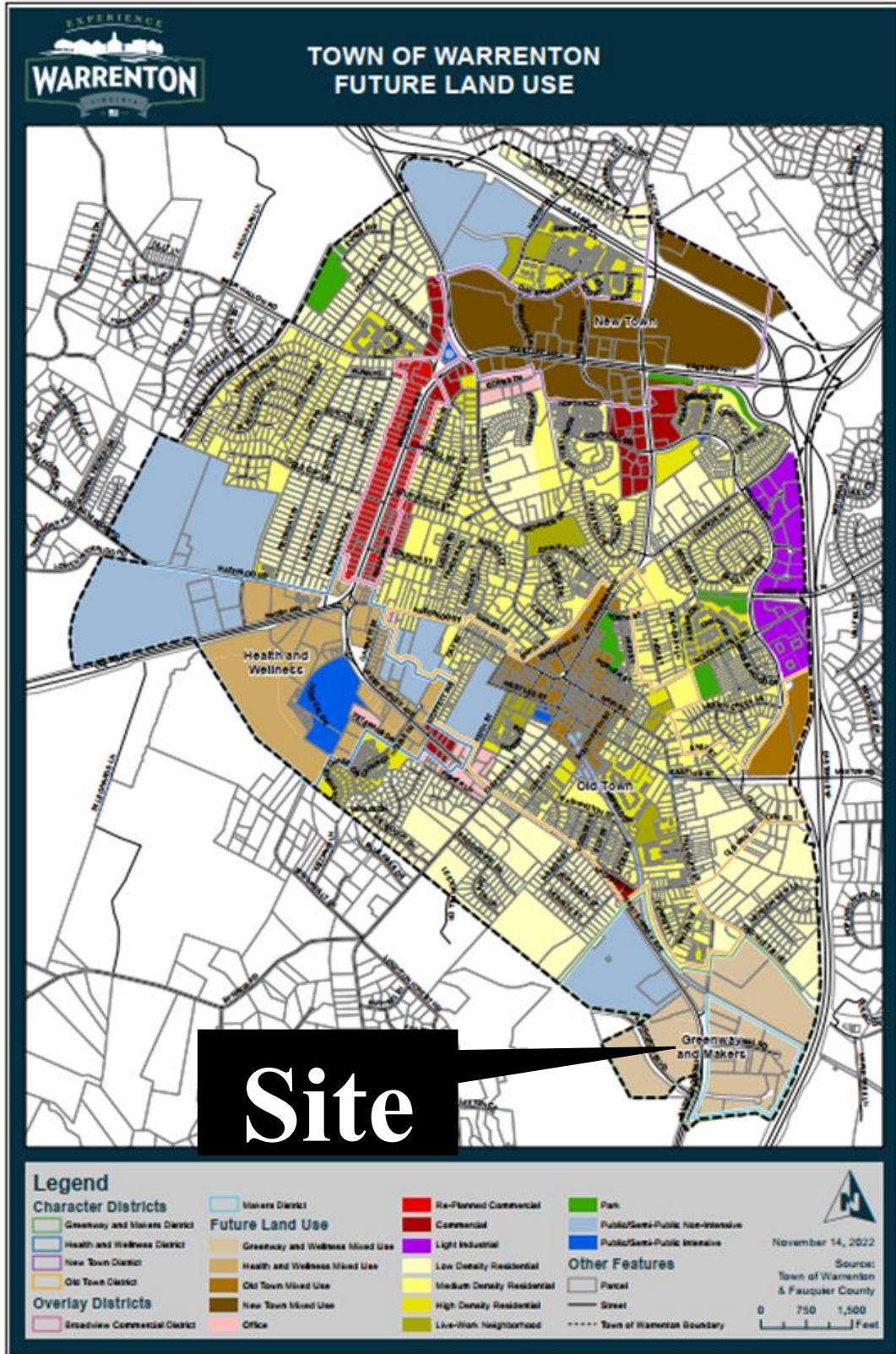
Attachment A – Maps, Elevations, & Photos

Zoning Map:

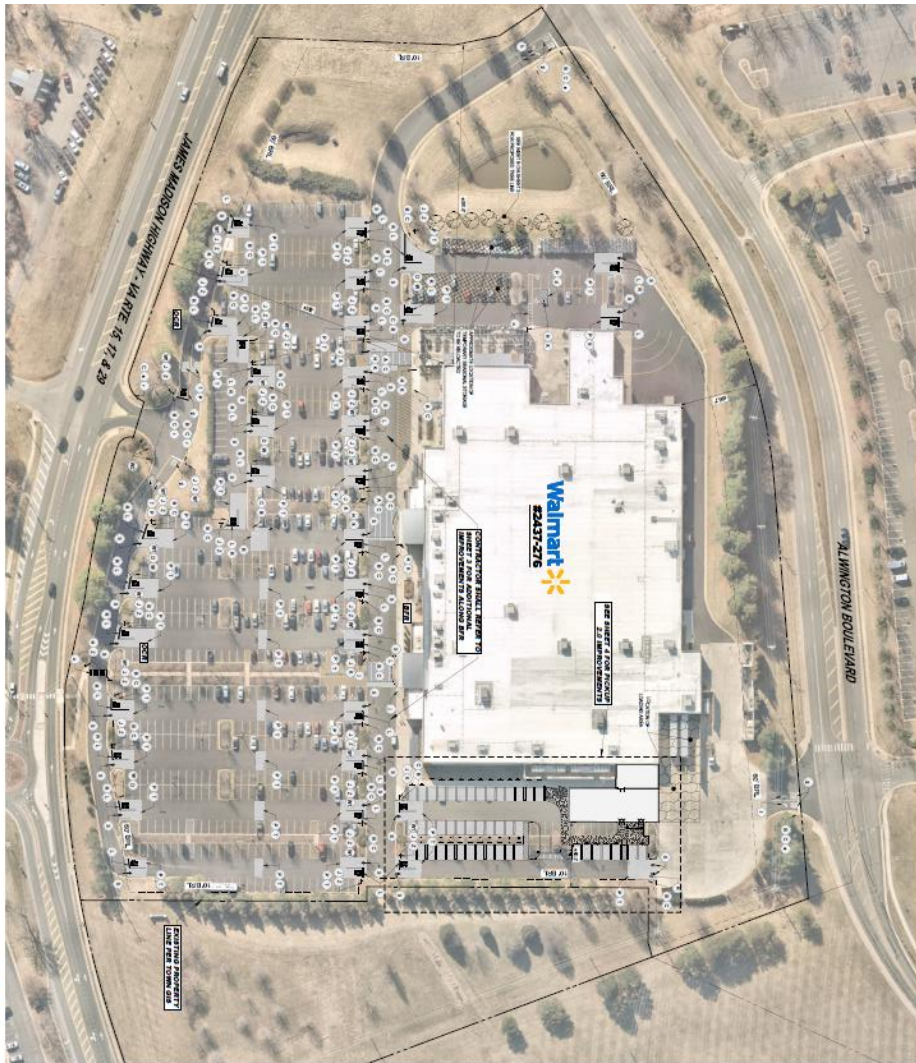


Attachment A – Maps, Elevations, & Photos

Future Land Use Map:



Attachment A – Maps, Elevations, & Photos



STOP SIGNS AND MARKING PLAN

ALERT TO CONTRACTOR
 CONTRACTOR SHALL BE RESPONSIBLE FOR VERIFYING THE LOCATION AND DEPTH OF ALL UTILITIES PRIOR TO ANY EXCAVATION OR CONSTRUCTION WORK. THE CONTRACTOR SHALL BE RESPONSIBLE FOR OBTAINING ALL NECESSARY PERMITS AND APPROVALS FROM THE LOCAL GOVERNMENT AGENCIES PRIOR TO THE START OF CONSTRUCTION.

CAUTION - NOTICE TO CONTRACTOR
 CONTRACTOR SHALL BE RESPONSIBLE FOR VERIFYING THE LOCATION AND DEPTH OF ALL UTILITIES PRIOR TO ANY EXCAVATION OR CONSTRUCTION WORK. THE CONTRACTOR SHALL BE RESPONSIBLE FOR OBTAINING ALL NECESSARY PERMITS AND APPROVALS FROM THE LOCAL GOVERNMENT AGENCIES PRIOR TO THE START OF CONSTRUCTION.



- SITE AND DEMOLITION LEGEND**
- 1. EXISTING IMPROVEMENTS TO BE DEMOLISHED
 - 2. EXISTING IMPROVEMENTS TO BE MAINTAINED
 - 3. EXISTING IMPROVEMENTS TO BE RECONSTRUCTED
 - 4. EXISTING IMPROVEMENTS TO BE RECONSTRUCTED AND ENLARGED
 - 5. EXISTING IMPROVEMENTS TO BE RECONSTRUCTED AND ENLARGED WITH NEW MATERIALS
 - 6. EXISTING IMPROVEMENTS TO BE RECONSTRUCTED AND ENLARGED WITH NEW MATERIALS AND NEW DESIGN
 - 7. EXISTING IMPROVEMENTS TO BE RECONSTRUCTED AND ENLARGED WITH NEW MATERIALS AND NEW DESIGN AND NEW FUNCTION
 - 8. EXISTING IMPROVEMENTS TO BE RECONSTRUCTED AND ENLARGED WITH NEW MATERIALS AND NEW DESIGN AND NEW FUNCTION AND NEW LOCATION
 - 9. EXISTING IMPROVEMENTS TO BE RECONSTRUCTED AND ENLARGED WITH NEW MATERIALS AND NEW DESIGN AND NEW FUNCTION AND NEW LOCATION AND NEW MATERIALS
 - 10. EXISTING IMPROVEMENTS TO BE RECONSTRUCTED AND ENLARGED WITH NEW MATERIALS AND NEW DESIGN AND NEW FUNCTION AND NEW LOCATION AND NEW MATERIALS AND NEW DESIGN
 - 11. EXISTING IMPROVEMENTS TO BE RECONSTRUCTED AND ENLARGED WITH NEW MATERIALS AND NEW DESIGN AND NEW FUNCTION AND NEW LOCATION AND NEW MATERIALS AND NEW DESIGN AND NEW FUNCTION
 - 12. EXISTING IMPROVEMENTS TO BE RECONSTRUCTED AND ENLARGED WITH NEW MATERIALS AND NEW DESIGN AND NEW FUNCTION AND NEW LOCATION AND NEW MATERIALS AND NEW DESIGN AND NEW FUNCTION AND NEW LOCATION
 - 13. EXISTING IMPROVEMENTS TO BE RECONSTRUCTED AND ENLARGED WITH NEW MATERIALS AND NEW DESIGN AND NEW FUNCTION AND NEW LOCATION AND NEW MATERIALS AND NEW DESIGN AND NEW FUNCTION AND NEW LOCATION AND NEW MATERIALS
 - 14. EXISTING IMPROVEMENTS TO BE RECONSTRUCTED AND ENLARGED WITH NEW MATERIALS AND NEW DESIGN AND NEW FUNCTION AND NEW LOCATION AND NEW MATERIALS AND NEW DESIGN AND NEW FUNCTION AND NEW LOCATION AND NEW MATERIALS AND NEW DESIGN
 - 15. EXISTING IMPROVEMENTS TO BE RECONSTRUCTED AND ENLARGED WITH NEW MATERIALS AND NEW DESIGN AND NEW FUNCTION AND NEW LOCATION AND NEW MATERIALS AND NEW DESIGN AND NEW FUNCTION AND NEW LOCATION AND NEW MATERIALS AND NEW DESIGN AND NEW FUNCTION
 - 16. EXISTING IMPROVEMENTS TO BE RECONSTRUCTED AND ENLARGED WITH NEW MATERIALS AND NEW DESIGN AND NEW FUNCTION AND NEW LOCATION AND NEW MATERIALS AND NEW DESIGN AND NEW FUNCTION AND NEW LOCATION AND NEW MATERIALS AND NEW DESIGN AND NEW FUNCTION AND NEW LOCATION
 - 17. EXISTING IMPROVEMENTS TO BE RECONSTRUCTED AND ENLARGED WITH NEW MATERIALS AND NEW DESIGN AND NEW FUNCTION AND NEW LOCATION AND NEW MATERIALS AND NEW DESIGN AND NEW FUNCTION AND NEW LOCATION AND NEW MATERIALS AND NEW DESIGN AND NEW FUNCTION AND NEW LOCATION AND NEW MATERIALS
 - 18. EXISTING IMPROVEMENTS TO BE RECONSTRUCTED AND ENLARGED WITH NEW MATERIALS AND NEW DESIGN AND NEW FUNCTION AND NEW LOCATION AND NEW MATERIALS AND NEW DESIGN AND NEW FUNCTION AND NEW LOCATION AND NEW MATERIALS AND NEW DESIGN AND NEW FUNCTION AND NEW LOCATION AND NEW MATERIALS AND NEW DESIGN
 - 19. EXISTING IMPROVEMENTS TO BE RECONSTRUCTED AND ENLARGED WITH NEW MATERIALS AND NEW DESIGN AND NEW FUNCTION AND NEW LOCATION AND NEW MATERIALS AND NEW DESIGN AND NEW FUNCTION AND NEW LOCATION AND NEW MATERIALS AND NEW DESIGN AND NEW FUNCTION AND NEW LOCATION AND NEW MATERIALS AND NEW DESIGN AND NEW FUNCTION
 - 20. EXISTING IMPROVEMENTS TO BE RECONSTRUCTED AND ENLARGED WITH NEW MATERIALS AND NEW DESIGN AND NEW FUNCTION AND NEW LOCATION AND NEW MATERIALS AND NEW DESIGN AND NEW FUNCTION AND NEW LOCATION AND NEW MATERIALS AND NEW DESIGN AND NEW FUNCTION AND NEW LOCATION AND NEW MATERIALS AND NEW DESIGN AND NEW FUNCTION AND NEW LOCATION

PARKING ANALYSIS	
EXISTING	1,200
NEW	1,200
TOTAL	2,400

2

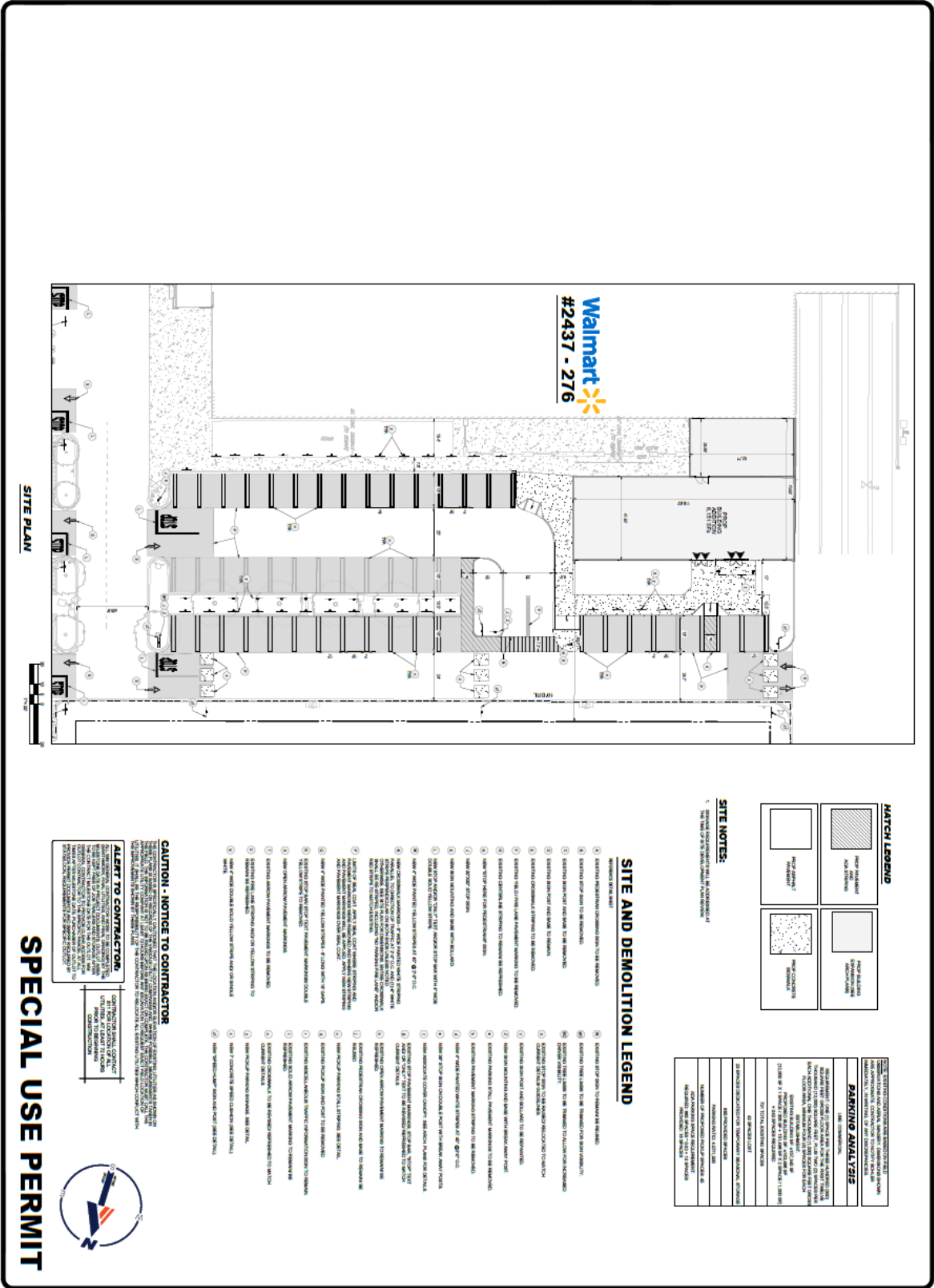
SUPERCENTER #2437-276
 700 JAMES MADISON HIGHWAY
 WARRENTON, VIRGINIA 20186

WAL-MART STORES, INC
 BENTONVILLE, AR 72716

BOHLER
 2640 BROADWAY DRIVE, SUITE 201
 WARRENTON, VIRGINIA 20186
 Phone: 540-248-8211
 Fax: 540-248-8211
 VA@BohlerEng.com

NO.	DATE	REVISIONS

Attachment A - Maps, Elevations, & Photos



NO. OF SHEETS	4
SHEET NO.	4
DATE	
BY	
CHECKED BY	
APPROVED BY	

Walmart

SUPERCENTER #2437-276
700 JAMES MADISON HIGHWAY
WARRENTON, VIRGINIA 20186

WAL-MART STORES, INC
BENTONVILLE, AR 72716

BOHLER

25 BLACKWELL PARK LANE, SUITE 201
WARRENTON, VA 20186
Phone: (541) 868-4850
Fax: (541) 868-2821
VA@Bo-MW-Eng.com

811

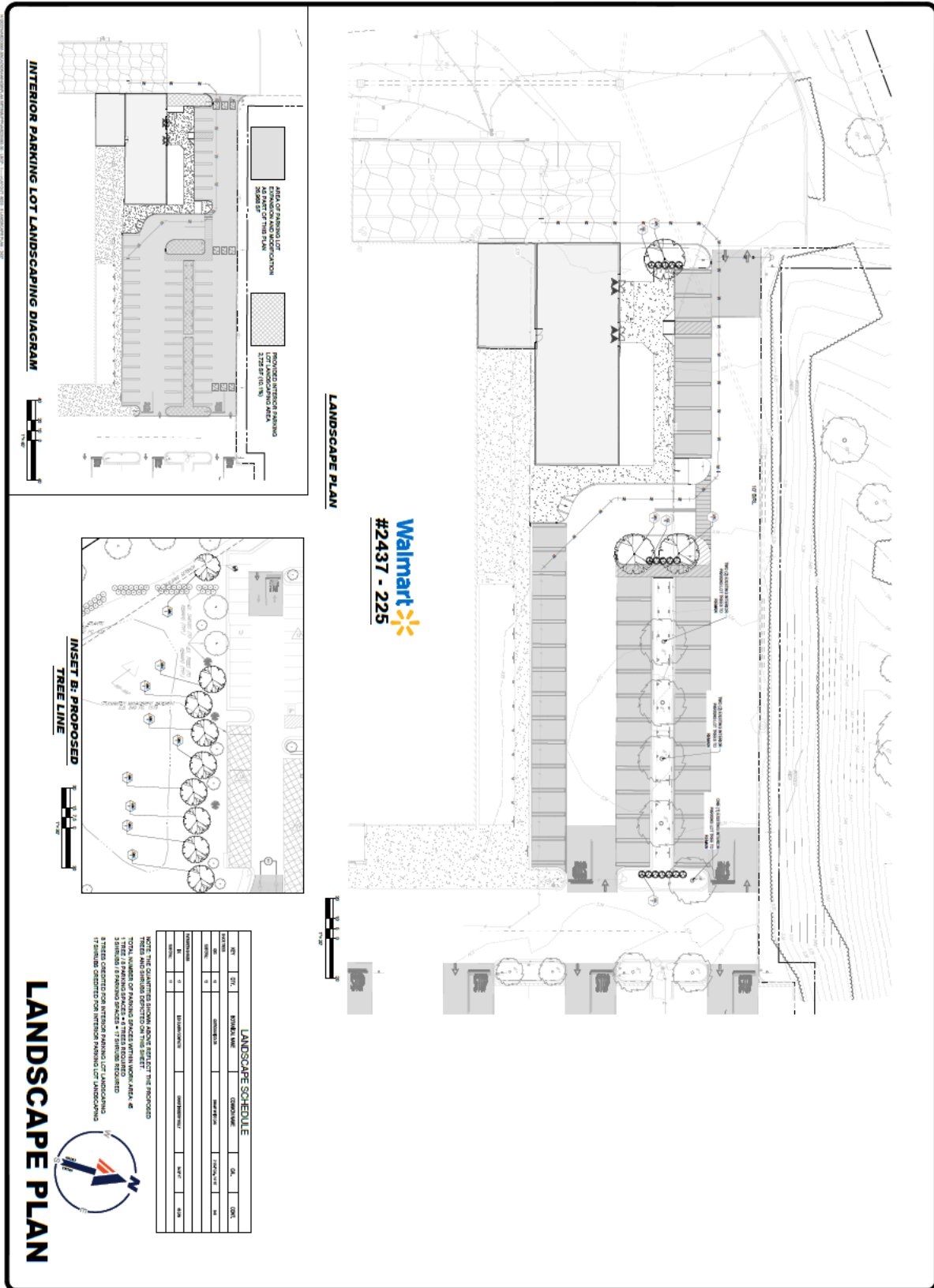
NOT APPROVED FOR CONSTRUCTION

Bohler

VA REGISTERED PROFESSIONAL ENGINEER

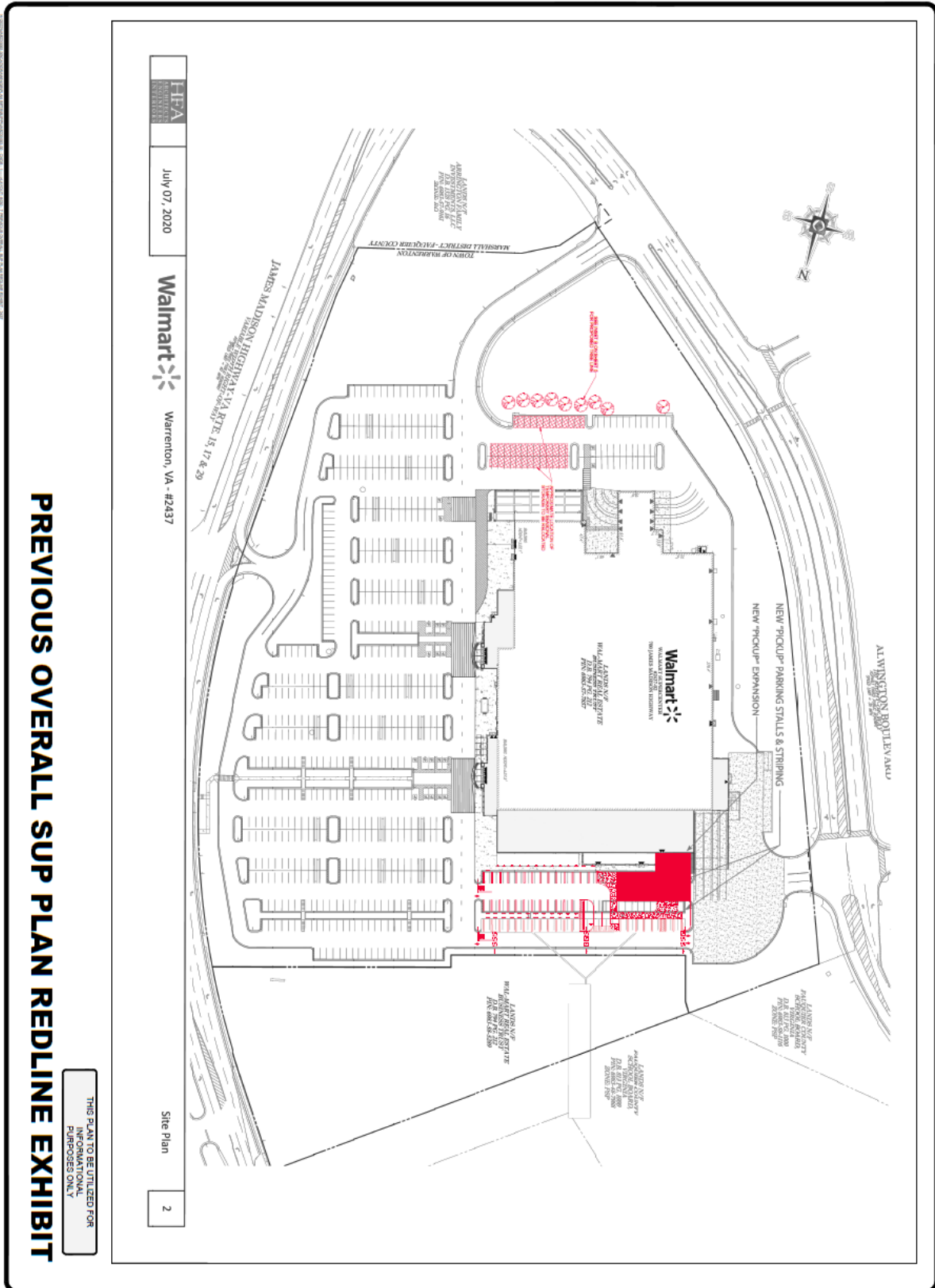
NO. OF SHEETS	4
SHEET NO.	4
DATE	
BY	
CHECKED BY	
APPROVED BY	

Attachment A – Maps, Elevations, & Photos



	SUPERCENTER #2437-276 700 JAMES MADISON HIGHWAY WARRENTON, VIRGINIA 20186		NOT APPROVED FOR CONSTRUCTION		23 BLACKWELL PARK LANE, SUITE 201 WARRENTON, VIRGINIA 20186 Phone: (443) 26-4400 Fax: (443) 26-4411 VA@BohlerEng.com	REVISIONS NO. DATE BY
	WAL-MART STORES, INC BENTONVILLE, AR 72716					

Attachment A – Maps, Elevations, & Photos



PREVIOUS OVERALL SUP PLAN REDLINE EXHIBIT

7

Walmart

SUPERCENTER #2437-276
700 JAMES MADISON HIGHWAY
WARRENTON, VIRGINIA 20186

WAL-MART STORES, INC
BENTONVILLE, AR 72716

NOT APPROVED FOR CONSTRUCTION

BOHLER

28 BLACKMELL FIVE LINE, SUITE 201
WARRENTON, VIRGINIA 20186
Phone: (441) 24-4200
Fax: (441) 24-4201
VA@BohlerEng.com

REVISION	DATE

Attachment A – Maps, Elevations, & Photos



Viewing the area where the expansion and outdoor pick-up will be located. Parking, traffic circulation patterns, and traffic calming measures have been revised to address all pedestrian and vehicular safety concerns. Increased landscaping and buffering will also be implemented on this side of the store.



Attachment A – Maps, Elevations, & Photos



Revised elevation drawings have removed the existing “Knockout Orange” and has implemented a new earth tone color scheme.



Attachment A – Maps, Elevations, & Photos



Viewing toward general area where the Seasonal Outdoor Storage Containers will be located just over the berm. Revised landscaping plan will add additional trees and shrubs in this location to reduce visibility from Alwington Boulevard.



Viewing toward general area of Seasonal Outdoor Storage Containers. Revised landscaping plan will add additional trees and shrubs in this location to reduce visibility from James Madison Highway.