



VIEW 3D MODEL

Areas	Siding	Other
Facades	20 ft ²	8741 ft ²
Openings	-	1139 ft ²
Trims*	22 ft ²	125 ft ²
Unknown (no photos)*	-	307 ft ²
Total	42 ft ²	10312 ft ²

*Any trim or unknown material that touches siding is included in the 'Siding' column. If it does not touch siding, then it's included in the 'Other' column.

Openings	Siding	Other
Quantity	0	38
Tops Length	-	113' 2"
Sills Length	-	137' 5"
Sides Length	-	376' 7"
Total Perimeter	-	627' 1"

Corners	Siding	Other
Inside Qty	2	0
Inside Length	1' 8"	-
Outside Qty	2	0
Outside Length	1'	-

Accessories	Siding	Other
Shutter Qty	0	0
Shutter Area	0 ft ²	0 ft ²
Vents Qty	0	0
Vents Area	0 ft ²	0 ft ²

Trim	Siding	Other
Level Starter	12' 8"	1125' 7"
Sloped Trim	-	217' 6"
Vertical Trim	9' 9"	1138' 10"

Roofline	Length	Avg. Depth	Soffit Area
Eaves Fascia	312' 10"	-	-
Level Frieze Board	235' 10"	1' 2"	162 ft ²
Rakes Fascia	75' 10"	-	-
Sloped Frieze Board	76' 3"	3"	4 ft ²

SIDING WASTE TOTALS

Siding & Trim Only*	Area	Squares
Zero Waste	40 ft ²	0½
+10%	46 ft ²	0½
+18%	48 ft ²	0½

+ Openings < 20ft ²	Area	Squares
Zero Waste	40 ft ²	0½
+10%	46 ft ²	0½
+18%	48 ft ²	0½

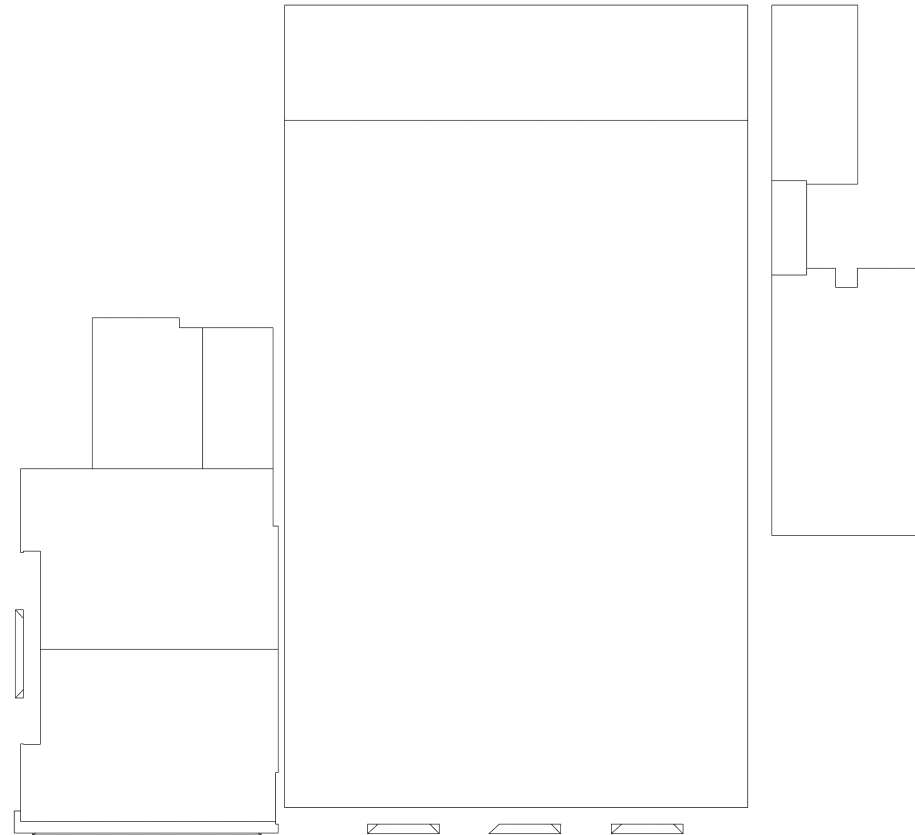
+ Openings < 33ft ²	Area	Squares
Zero Waste	40 ft ²	0½
+10%	46 ft ²	0½
+18%	48 ft ²	0½

*The first three rows of the Siding Waste Factor table are calculated using the total ft² of siding facades, ft² of trim touching siding, and ft² of unknowns touching siding.

Roof	Area	Total	Length
Roof Facets	6193 ft ²	24	-
Ridges / Hips	-	10	40' 7"
Valleys	-	0	-
Rakes	-	9	75' 10"
Eaves	-	22	312' 10"
Flashing	-	30	439' 11"
Step Flashing	-	10	48' 11"
Drip Edge/Perimeter	-	-	388' 8"

Roof Pitch*	Area	Percentage
0 / 12	4472 ft ²	72.21%
4 / 12	1013 ft ²	16.36%
1 / 12	601 ft ²	9.7%
7 / 12	78 ft ²	1.26%

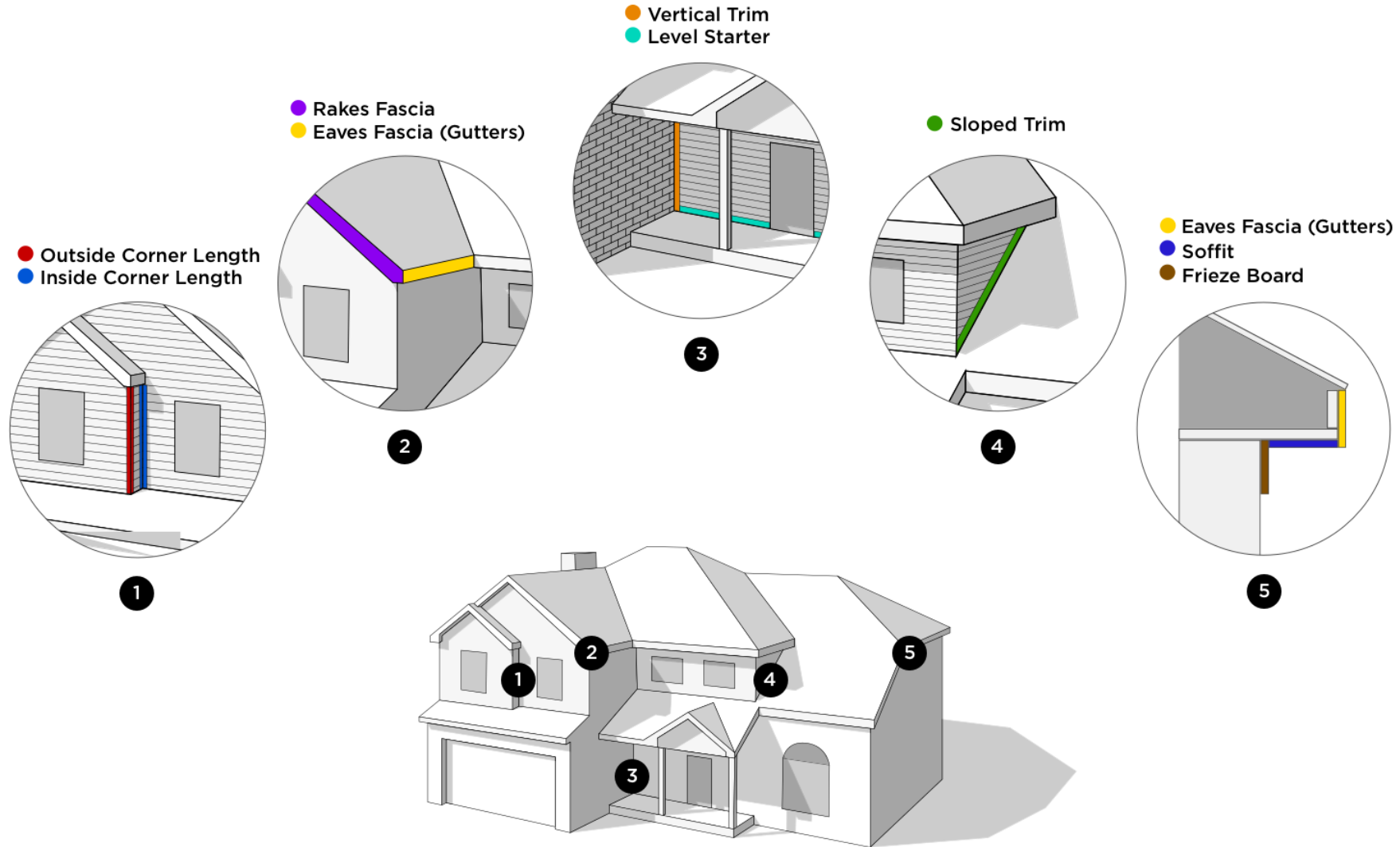
* Only top 4 values shown. Reference Roof Pitch page for all values.



Example Waste Factor Calculations

	Zero Waste	+5%	+10%	+15%	+20%
Area	6193 ft ²	6503 ft ²	6812 ft ²	7122 ft ²	7432 ft ²
Squares	62	65⅓	68⅓	71⅓	74⅓

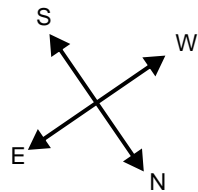
The table above provides the total roof area of a given property using waste percentages as noted. Please consider that area values and specific waste factors can be influenced by the size and complexity of the property, captured image quality, specific roofing techniques, and your own level of expertise. Additional square footage for Hip, Ridge, and Starter shingles are not included in this waste factor and will require additional materials. This table is only intended to make common waste calculations easier and should not be interpreted as recommendations.





Complete Measurements

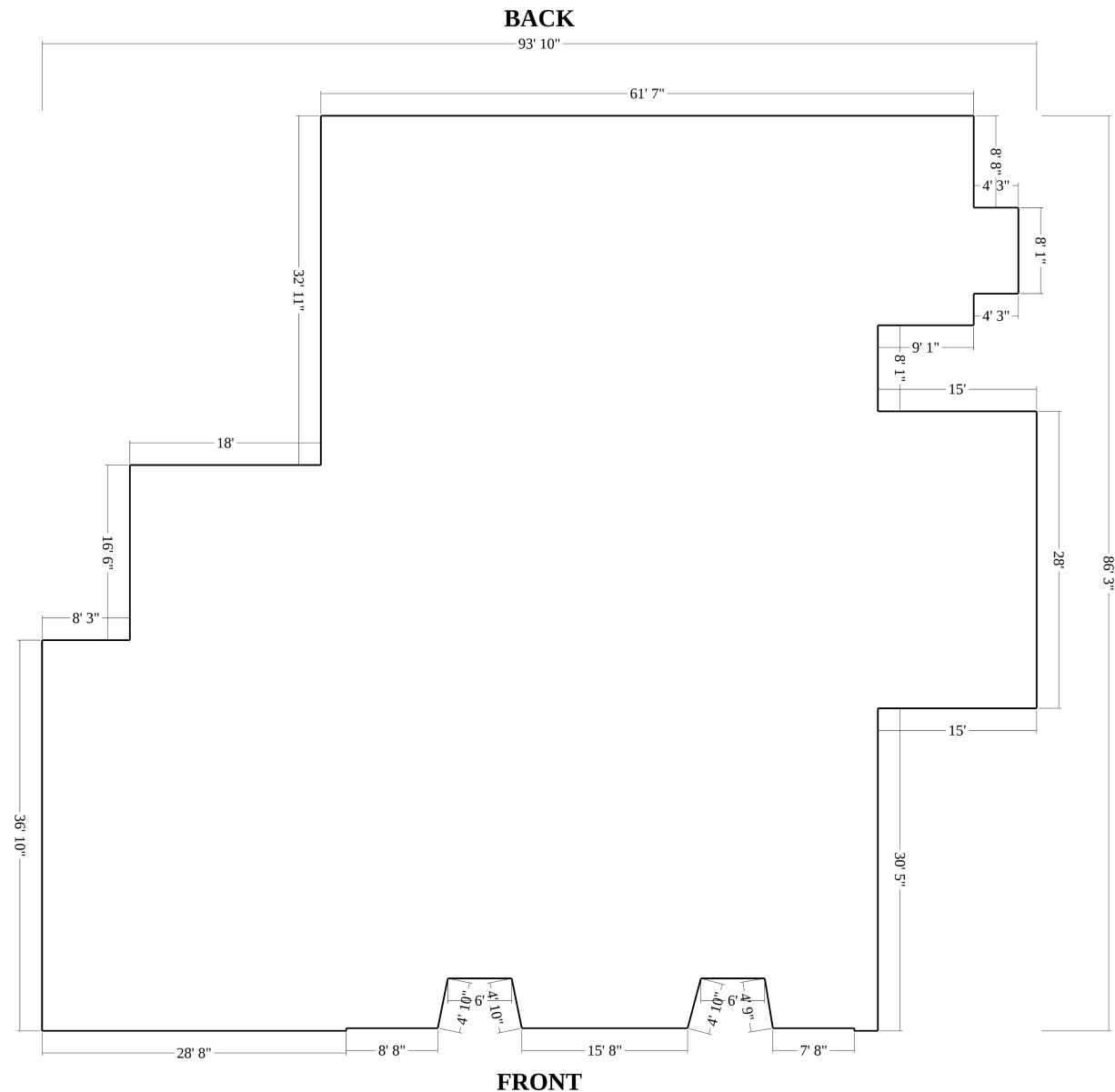
52 Main Street, Warrenton, VA
FOOTPRINT



Number of Stories: > 1

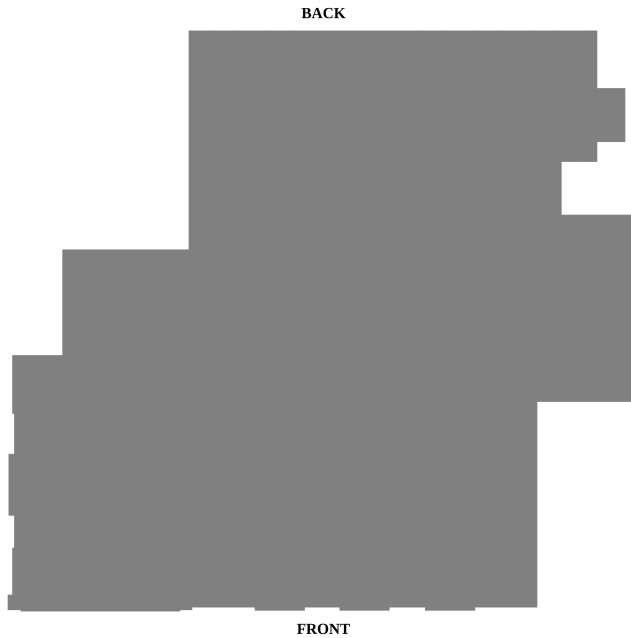
Footprint Perimeter: 402' 6"

Footprint Area: 6354 ft²

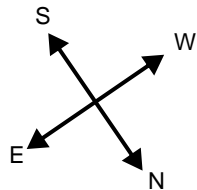


Siding Per Elevation

FRONT			RIGHT			LEFT			BACK		
SI-1	-	5 ft ²							SI-3	-	5 ft ²
SI-2	-	5 ft ²							SI-4	-	5 ft ²
10 ft ²			0 ft ²			0 ft ²			10 ft ²		

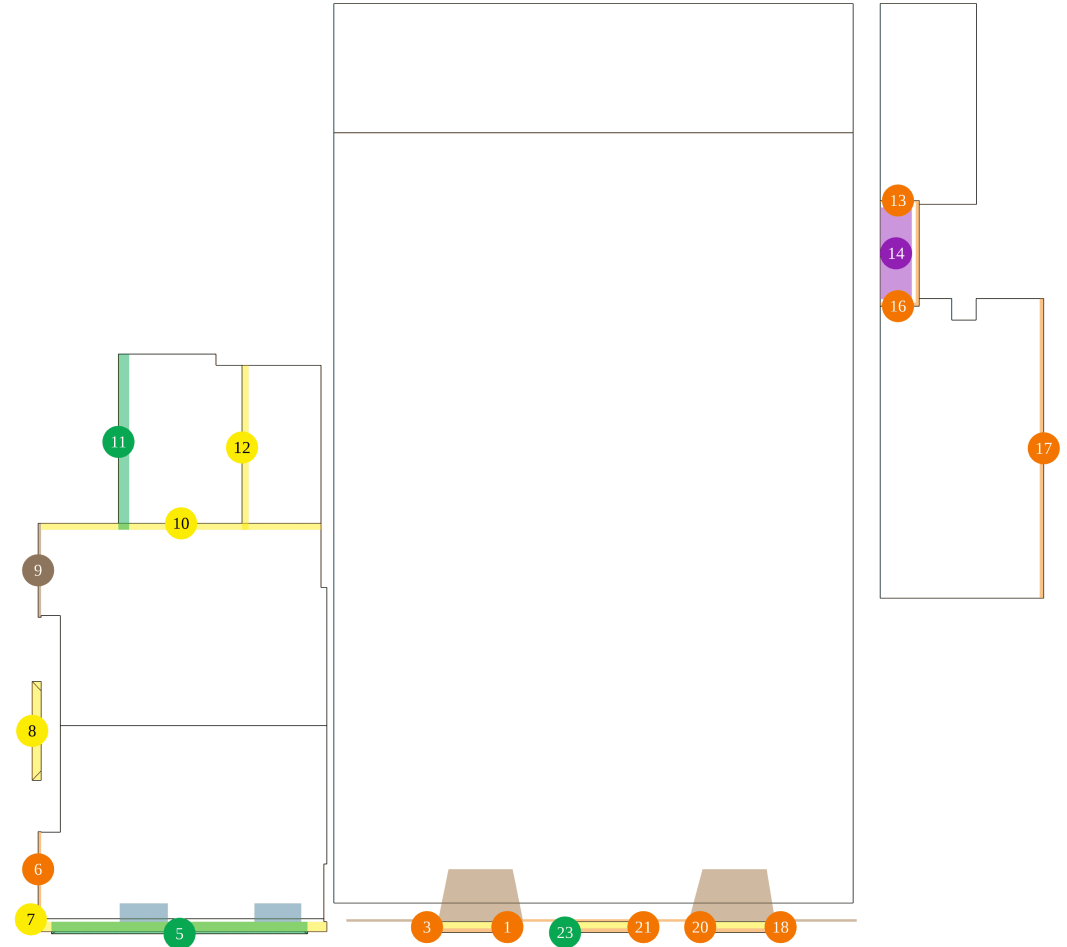


Number of Stories: > 1



Soffit Summary

Depth	Type	Count	Total Length	Total Area
1" - 6"	rakes	3	15' 1"	4 ft ²
	eaves	10	63' 6"	24 ft ²
	-	1	15' 8"	4 ft ²
6" - 12"	eaves	5	80' 3"	61 ft ²
	-	3	20' 4"	13 ft ²
12" - 18"	eaves	3	41'	44 ft ²
18" - 24"	-	2	8' 11"	15 ft ²
24" - 48"	eaves	1	8' 8"	30 ft ²
> 48"	eaves	1	3"	3 ft ²
	-	4	16' 6"	74 ft ²
Totals			270'	272 ft ²



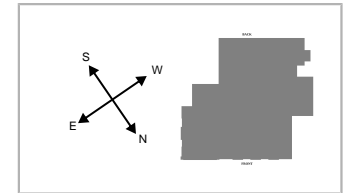
Soffit Breakdown

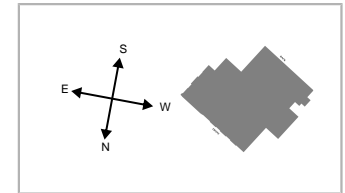
●	1	eave	5"	1'	0 ft ²	9 / 12
⌀	2	eave	5"	6' 9"	3 ft ²	9 / 12
●	3	eave	5"	1'	0 ft ²	9 / 12
⚡	4	eave	11"	26' 10"	25 ft ²	0 / 12
●	5	eave	14"	24' 1"	27 ft ²	7 / 12
●	6	rake	3"	7' 5"	2 ft ²	4 / 12
●	7	eave	12"	2' 4"	2 ft ²	0 / 12
●	8	eave	10"	9' 4"	8 ft ²	7 / 12
●	9	eave	111"	3"	3 ft ²	4 / 12
●	10	eave	7"	26' 4"	16 ft ²	4 / 12
●	11	eave	12"	16' 6"	17 ft ²	0 / 12
●	12	eave	8"	15' 6"	10 ft ²	0 / 12
●	13	rake	2"	3' 10"	1 ft ²	7 / 12
●	14	eave	42"	8' 8"	30 ft ²	7 / 12
⌀	15	eave	4"	9' 11"	4 ft ²	7 / 12
●	16	rake	4"	3' 10"	1 ft ²	7 / 12
●	17	eave	5"	28' 2"	11 ft ²	1 / 12
●	18	eave	5"	1'	0 ft ²	9 / 12
⌀	19	eave	5"	6' 9"	3 ft ²	9 / 12

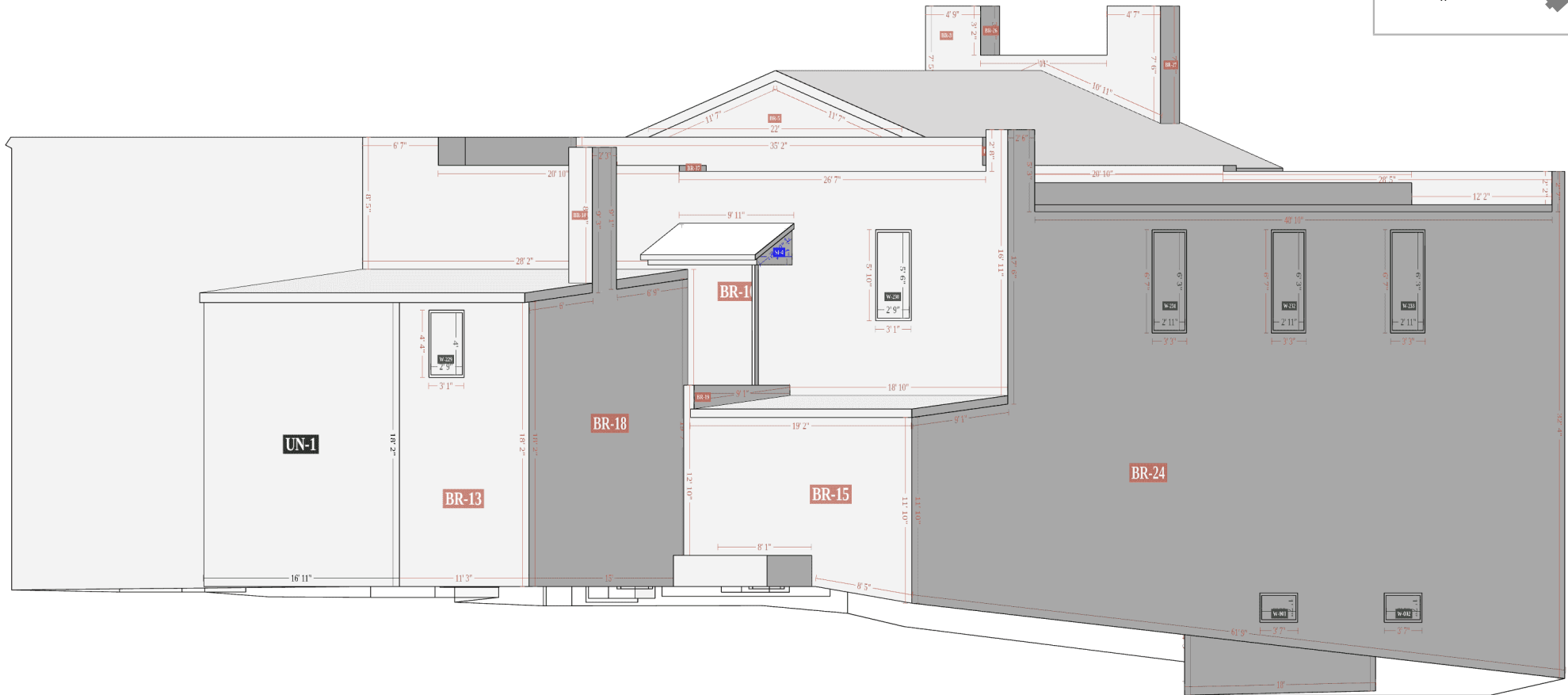
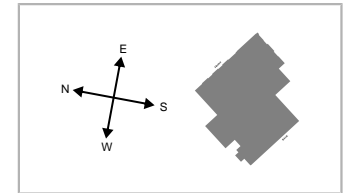
●	20	eave	5"	1'	0 ft ²	9 / 12
●	21	eave	5"	1'	0 ft ²	9 / 12
⌀	22	eave	5"	6' 9"	3 ft ²	9 / 12
●	23	eave	12"	5"	0 ft ²	9 / 12
⌀	24	-	58"	7' 11"	35 ft ²	0 / 12
⚡	25	-	7"	6' 9"	4 ft ²	9 / 12
⌀	26	-	104"	3"	2 ft ²	9 / 12
⌀	27	-	21"	4' 5"	8 ft ²	7 / 12
⌀	28	-	21"	4' 6"	8 ft ²	7 / 12
⌀	29	-	92"	3"	2 ft ²	9 / 12
⌀	30	-	57"	8' 1"	35 ft ²	0 / 12
⚡	31	-	8"	6' 9"	4 ft ²	9 / 12
⌀	32	-	3"	15' 8"	4 ft ²	9 / 12
⚡	33	-	7"	6' 9"	4 ft ²	9 / 12

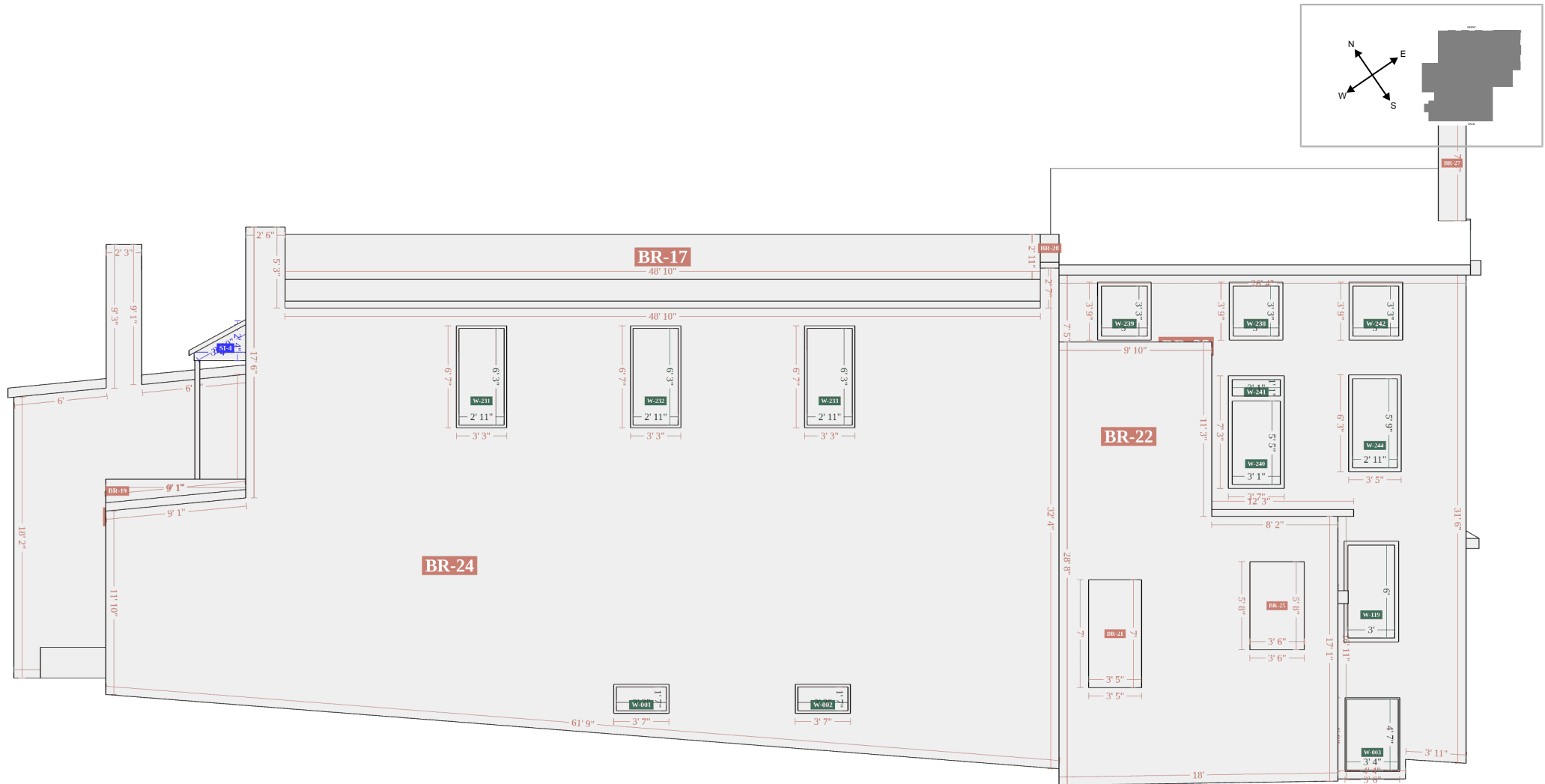
⌀ Feature is too small to label on the plan diagram

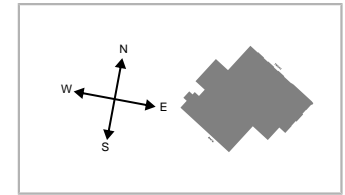
- Feature could not be labelled with complete certainty















LEFT-FRONT



Siding

Facade	Area	Inside Corners	Outside Corners	Openings	Shutters	Vents
SI-1	5 ft ²	-	1	-	-	-
SI-2	5 ft ²	1	-	-	-	-
SI-3	5 ft ²	1	-	-	-	-
SI-4	5 ft ²	-	1	-	-	-
Total	20 ft ²	2	2	0	0	0

Brick

Facade	Area	Openings	Shutters	Vents
BR-1	375 ft ²	10	-	-
BR-2	13 ft ²	-	-	-
BR-3	83 ft ²	-	-	-
BR-4	6 ft ²	-	-	-
BR-5	39 ft ²	-	-	-
BR-6	163 ft ²	-	-	-
BR-7	656 ft ²	-	-	-
BR-8	54 ft ²	-	-	-
BR-9	292 ft ²	-	-	-
BR-10	675 ft ²	1	-	-
BR-11	116 ft ²	-	-	-
BR-12	20 ft ²	-	-	-
BR-13	190 ft ²	1	-	-
BR-14	18 ft ²	-	-	-
BR-15	203 ft ²	-	-	-
BR-16	7 ft ²	-	-	-
BR-17	142 ft ²	-	-	-
BR-18	304 ft ²	-	-	-
BR-19	10 ft ²	-	-	-

Brick (cont.)

Facade	Area	Openings	Shutters	Vents
BR-20	2 ft ²	-	-	-
BR-21	24 ft ²	-	-	-
BR-22	378 ft ²	-	-	-
BR-23	358 ft ²	8	-	-
BR-24	1509 ft ²	5	-	-
BR-25	20 ft ²	-	-	-
BR-26	6 ft ²	-	-	-
BR-27	14 ft ²	-	-	-
BR-28	17 ft ²	-	-	-
BR-29	168 ft ²	-	-	-
BR-30	1165 ft ²	4	-	-
BR-31	11 ft ²	-	-	-
BR-32	80 ft ²	2	-	-
BR-33	191 ft ²	3	-	-
BR-34	5 ft ²	-	-	-
BR-35	1205 ft ²	4	-	-
BR-36*	2 ft ²	-	-	-
BR-37*	1 ft ²	-	-	-
Total	8522 ft ²	38	0	0

* Facet is not visible due to size or location

Stucco

Facade	Area	Openings	Shutters	Vents
STC-1	219 ft ²	-	-	-
Total	219 ft ²	0	0	0

Unknown (missing photos)

Facade	Area	Openings	Shutters	Vents
UN-1	307 ft ²	-	-	-
Total	307 ft ²	0	0	0

Facades

		Trim			Corners		Roofline		Openings		
Facade	Area	Level Starter	Sloped	Vertical	Inside	Outside	Level Frieze Board	Sloped Frieze Board	Tops	Sills	Sides
SI-1	5 ft ²	3' 4"	-	2' 4"	-	6"	-	3' 10"	-	-	-
SI-2	5 ft ²	3'	-	2' 7"	10"	-	-	3' 6"	-	-	-
SI-3	5 ft ²	3'	-	2' 7"	10"	-	-	3' 6"	-	-	-
SI-4	5 ft ²	3' 4"	-	2' 4"	-	6"	-	3' 10"	-	-	-
Total*	20 ft ²	12' 8"	-	9' 9"	1' 8"	1'	-	14' 6"	-	-	-

*Totals de-duplicate any line segments that are shared between multiple facades, and as a result may not represent a total summation of the corresponding column.

Example Waste Factor Calculations

SIDING & TRIM ONLY

	Zero Waste	+10%	+18%
SI-1	5 ft ²	6 ft ²	6 ft ²
SI-2	5 ft ²	6 ft ²	6 ft ²
SI-3	5 ft ²	6 ft ²	6 ft ²
SI-4	5 ft ²	6 ft ²	6 ft ²
Trims	20 ft ²	22 ft ²	24 ft ²
Total	40 ft ²	46 ft ²	48 ft ²

+ OPENINGS < 20FT²

	Zero Waste	+10%	+18%
	5 ft ²	6 ft ²	6 ft ²
	5 ft ²	6 ft ²	6 ft ²
	5 ft ²	6 ft ²	6 ft ²
	5 ft ²	6 ft ²	6 ft ²
	20 ft ²	22 ft ²	24 ft ²
	40 ft ²	46 ft ²	48 ft ²

+ OPENINGS < 33FT²

	Zero Waste	+10%	+18%
	5 ft ²	6 ft ²	6 ft ²
	5 ft ²	6 ft ²	6 ft ²
	5 ft ²	6 ft ²	6 ft ²
	5 ft ²	6 ft ²	6 ft ²
	20 ft ²	22 ft ²	24 ft ²
	40 ft ²	46 ft ²	48 ft ²

The first Siding Waste Factor table is calculated using the total ft² of siding facades, ft² of trim touching siding, and ft² of unknowns touching siding.

The tables above provide the area of siding on a given property, segmented by individual and in sum total form. Values include openings (doors & windows) and waste percentages as noted. Please consider that area values and specific waste factors can be influenced by the size and complexity of the property, captured image quality, specific siding techniques, and your own level of expertise. Accessories are not included in these values and may require additional material.

These tables are only intended to make common waste calculations easier and should not be interpreted as recommendations.

Windows

Group	Group Width x Height	Group United Inches	Opening	Width x Height	United Inches	Area
WG-1	39" x 19"	57"	W-001	39" x 19"	57"	5 ft ²
WG-2	39" x 19"	57"	W-002	39" x 19"	57"	5 ft ²
WG-3	40" x 55"	95"	W-003	40" x 55"	95"	15 ft ²
WG-4	45" x 34"	79"	W-004	45" x 34"	79"	11 ft ²
WG-5	170" x 78"	247"	W-105	43" x 78"	121"	23 ft ²
			W-106	43" x 78"	121"	23 ft ²
WG-6	94" x 90"	184"	W-107	94" x 90"	184"	59 ft ²
WG-7	53" x 91"	144"	W-108	53" x 91"	144"	34 ft ²
WG-8	53" x 87"	140"	W-109	53" x 87"	140"	32 ft ²
WG-9	180" x 89"	269"	W-110	76" x 89"	165"	47 ft ²
			W-111	90" x 88"	178"	55 ft ²
WG-10	53" x 87"	140"	W-112	53" x 87"	140"	32 ft ²
WG-11	53" x 87"	140"	W-113	53" x 87"	140"	32 ft ²
WG-12	83" x 95"	178"	W-114	83" x 95"	178"	55 ft ²
WG-13	45" x 36"	82"	W-115	45" x 36"	82"	11 ft ²
WG-14	45" x 36"	82"	W-116	45" x 36"	82"	11 ft ²
WG-15	15" x 50"	65"	W-117	15" x 50"	65"	5 ft ²
WG-16	15" x 50"	65"	W-118	15" x 50"	65"	5 ft ²

Windows (cont.)

Group	Group Width x Height	Group United Inches	Opening	Width x Height	United Inches	Area
WG-17	36" x 72"	108"	W-119	36" x 72"	108"	18 ft ²
WG-18	74" x 80"	154"	W-120	74" x 80"	154"	41 ft ²
WG-19	35" x 40"	74"	W-221	35" x 40"	74"	10 ft ²
WG-20	35" x 40"	74"	W-222	35" x 40"	74"	10 ft ²
WG-21	41" x 77"	117"	W-223	41" x 77"	117"	22 ft ²
WG-22	41" x 77"	117"	W-224	41" x 77"	117"	22 ft ²
WG-23	35" x 40"	74"	W-225	35" x 40"	74"	10 ft ²
WG-24	70" x 65"	135"	W-226	70" x 65"	135"	32 ft ²
WG-25	70" x 65"	135"	W-227	70" x 65"	135"	32 ft ²
WG-26	70" x 65"	135"	W-228	70" x 65"	135"	32 ft ²
WG-27	33" x 48"	80"	W-229	33" x 48"	80"	11 ft ²
WG-28	33" x 66"	99"	W-230	33" x 66"	99"	15 ft ²
WG-29	35" x 75"	110"	W-231	35" x 75"	110"	18 ft ²
WG-30	35" x 75"	110"	W-232	35" x 75"	110"	18 ft ²
WG-31	35" x 75"	110"	W-233	35" x 75"	110"	18 ft ²
WG-32	36" x 72"	108"	W-234	36" x 72"	108"	18 ft ²
WG-33	36" x 72"	108"	W-235	36" x 72"	108"	18 ft ²
WG-34	33" x 55"	88"	W-236	33" x 55"	88"	13 ft ²

Windows (cont.)

Group	Group Width x Height	Group United Inches	Opening	Width x Height	United Inches	Area
WG-35	33" x 55"	88"	W-237	33" x 55"	88"	13 ft ²
WG-36	36" x 39"	74"	W-238	36" x 39"	74"	10 ft ²
WG-37	36" x 39"	74"	W-239	36" x 39"	74"	10 ft ²
WG-38	37" x 81"	119"	W-240	37" x 65"	102"	17 ft ²
			W-241	37" x 13"	50"	3 ft ²
WG-39	36" x 39"	74"	W-242	36" x 39"	74"	10 ft ²
WG-40	29" x 47"	77"	W-243	29" x 47"	77"	10 ft ²
WG-41	35" x 69"	104"	W-244	35" x 69"	104"	17 ft ²
WG-42	29" x 47"	77"	W-245	29" x 47"	77"	10 ft ²
			Total	-	4755"	918 ft ²

Doors

Opening	Width x Height
D-1	36" x 80"
D-2	36" x 80"
D-3	32" x 82"
D-4	60" x 80"
D-5	60" x 80"
D-6	36" x 80"

*Door height and width have been snapped to standard

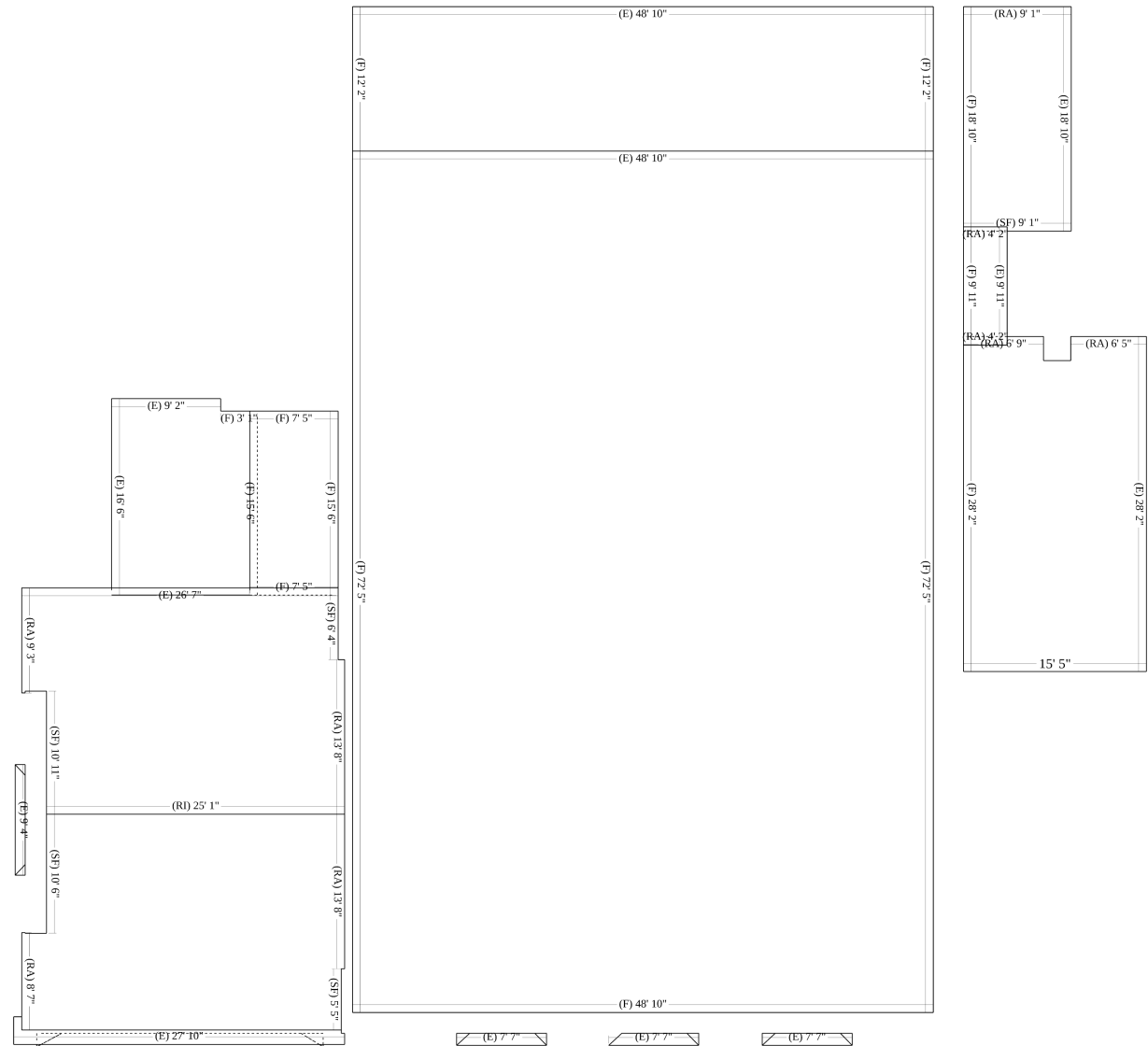
Entire Doors

Opening	Width x Height	Area
D-1	36" x 95"	24 ft ²
D-2	36" x 95"	24 ft ²
D-3	29" x 84"	17 ft ²
D-4	63" x 83"	36 ft ²
D-5	63" x 83"	36 ft ²
D-6	36" x 93"	23 ft ²
Total	-	160 ft ²

*Total door square footage includes entire door package (e.g. with transoms, sidelites, etc.)

Roof	Length
Ridges (RI)	25' 1"
Hips (H)	15' 7"
Valleys (V)	-
Rakes (RA)	75' 10"
Eaves (E)	312' 10"
Flashing (F)*	439' 11"
Step Flashing (SF)*	48' 11"
Transition Line (TL)	-

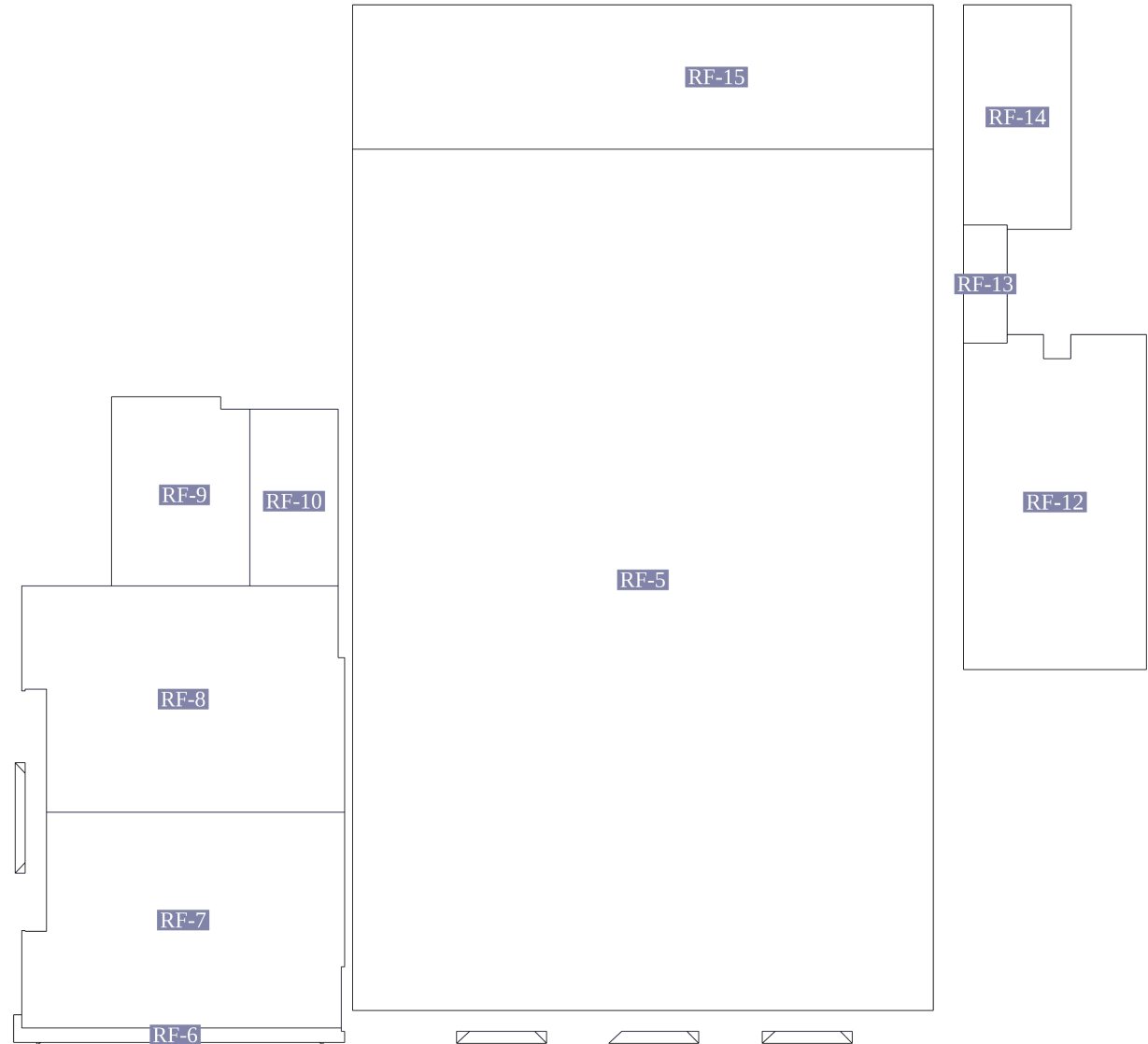
*Please view the 3D model for more detail (e.g. flashing, step flashing and some other roof lines may be difficult to see on the PDF)



Roof Facets

Facet	Area	Pitch
RF-1	29 ft ²	7/12
RF-2	8 ft ²	9/12
RF-3	8 ft ²	9/12
RF-4	8 ft ²	9/12
RF-5	3532 ft ²	0/12
RF-6	34 ft ²	0/12
RF-7	494 ft ²	4/12
RF-8	517 ft ²	4/12
RF-9	199 ft ²	0/12
RF-10	115 ft ²	0/12
RF-11	8 ft ²	7/12
RF-12	430 ft ²	1/12
RF-13	41 ft ²	7/12
RF-14	171 ft ²	1/12
RF-15	592 ft ²	0/12
RF-16*	1 ft ²	4/12
RF-17*	1 ft ²	4/12

* Facet is not visible due to size or location, see **Small Facets** in summary table below.



Roof	Facets	Total
Labeled Facets	15	6186 ft ²
Small Facets	9	7 ft ²
Total	24	6193 ft²



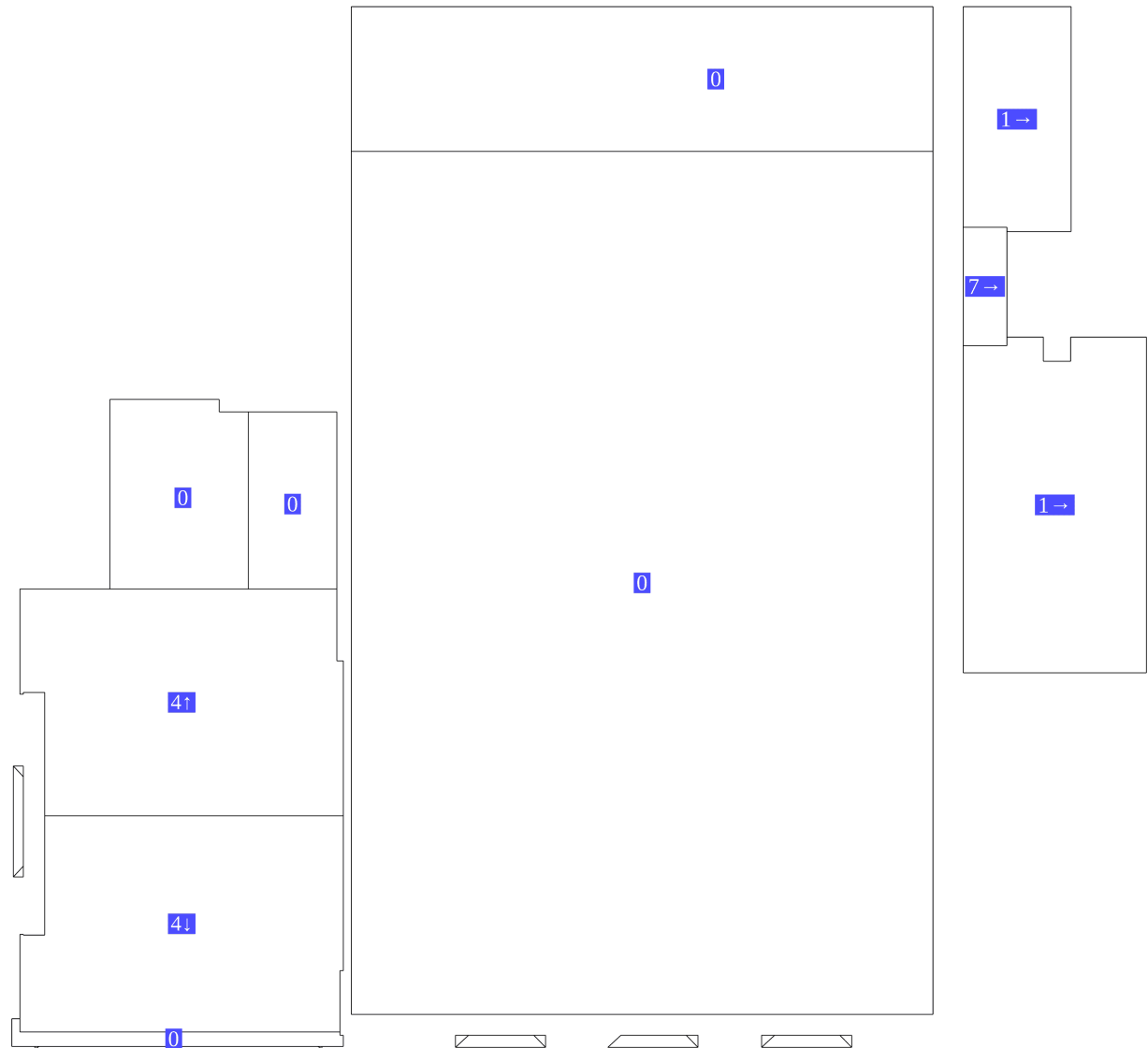


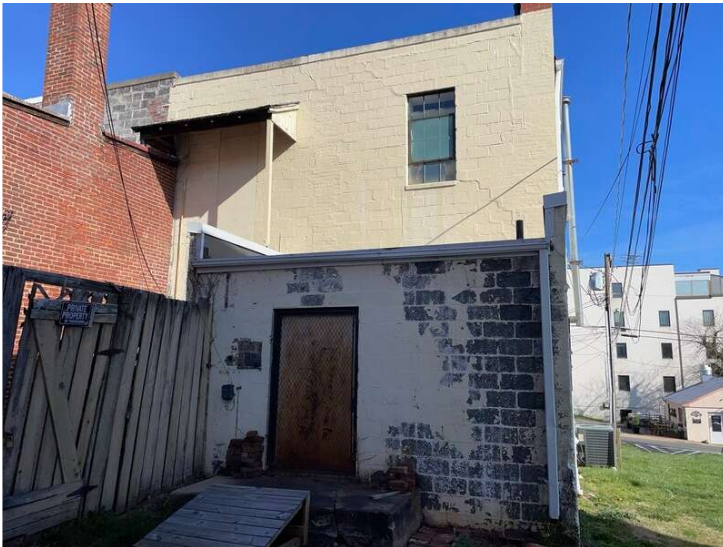
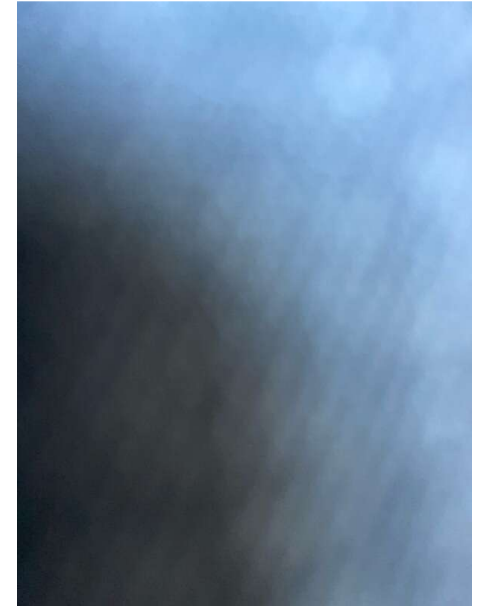
Complete Measurements

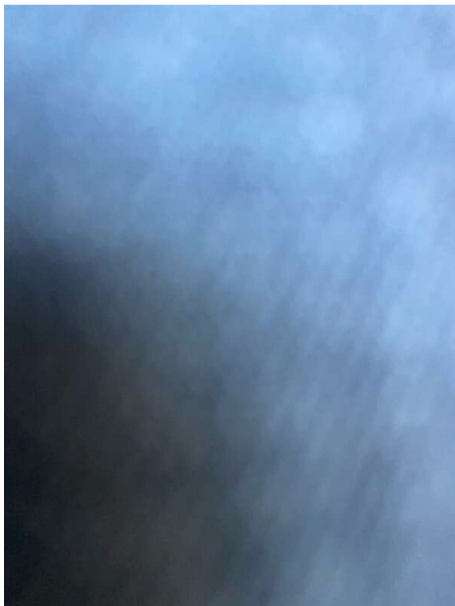
52 Main Street, Warrenton, VA

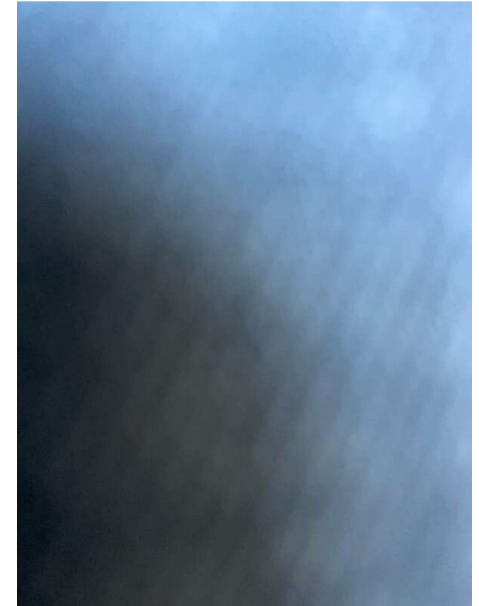
ROOF PITCH

Roof Pitch	Area	Percentage
0 / 12	4472 ft ²	72.21%
4 / 12	1013 ft ²	16.36%
1 / 12	601 ft ²	9.7%
7 / 12	78 ft ²	1.26%
9 / 12	29 ft ²	0.47%









© 2024 HOVER Inc. All rights reserved. This document and the images, measurement data, format and contents are the exclusive property of HOVER. HOVER is the registered trademark of Hover Inc. All other brands, products and company names mentioned herein may be trademarks or registered trademarks of their respective holders.

Use of this document is subject to HOVER's Terms of Use and is provided "as is." HOVER makes no guarantees, representations or warranties of any kind, express or implied, arising by law or otherwise relating to this document or its contents or use, including but not limited to, quality, accuracy, completeness, reliability, or fitness for a particular purpose.

