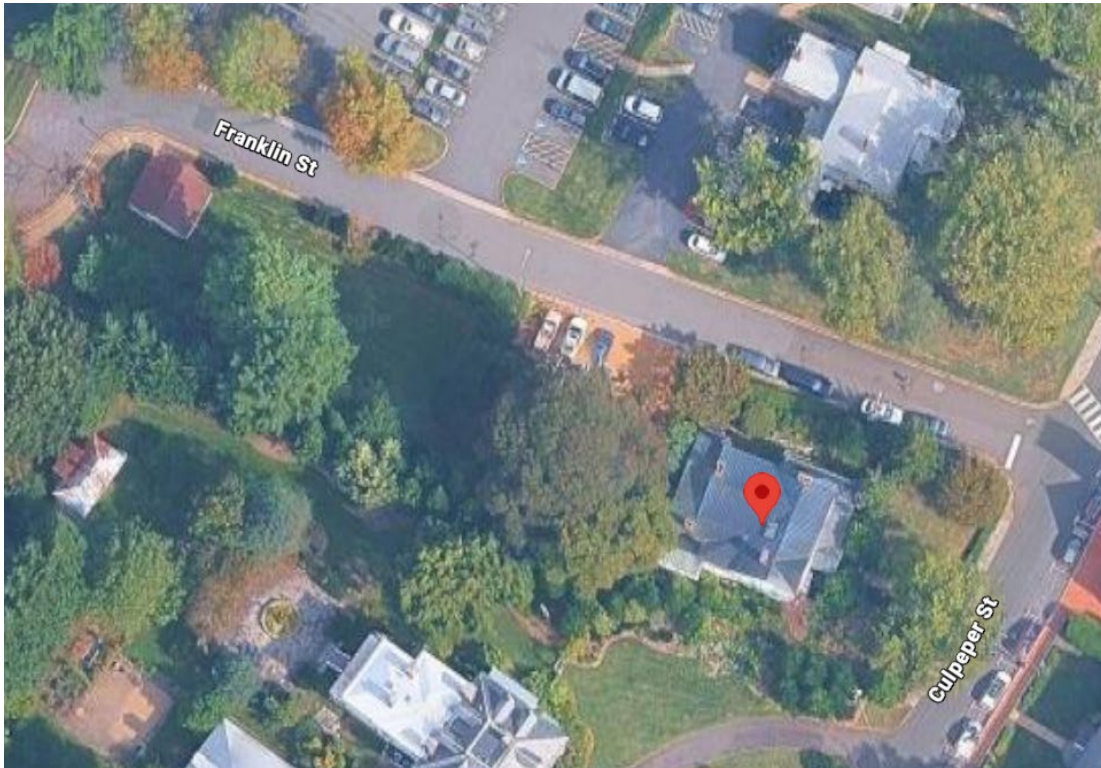


Site Map:



Street View:



Rear Elevation:







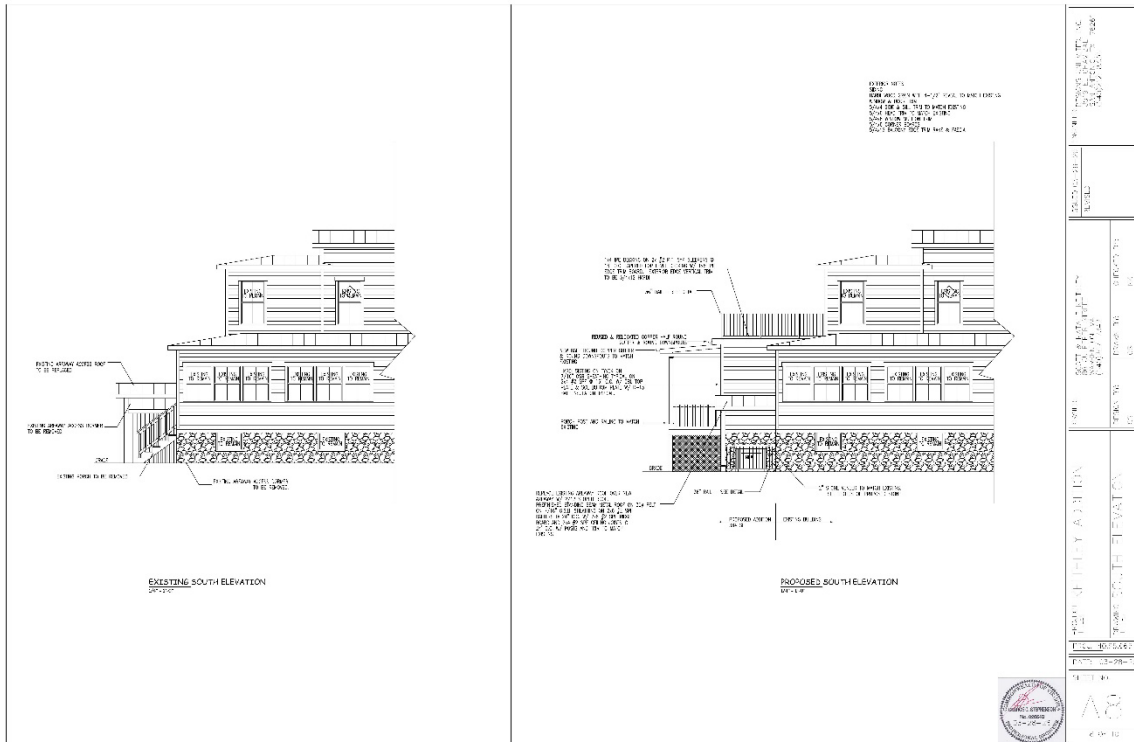
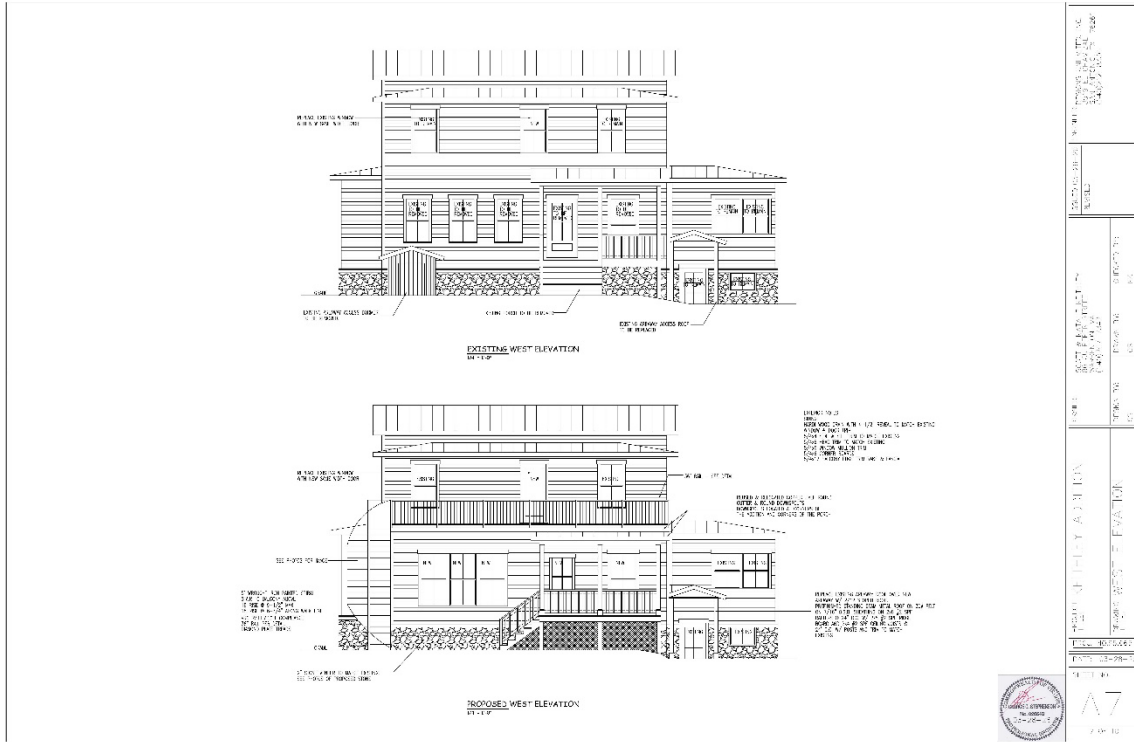


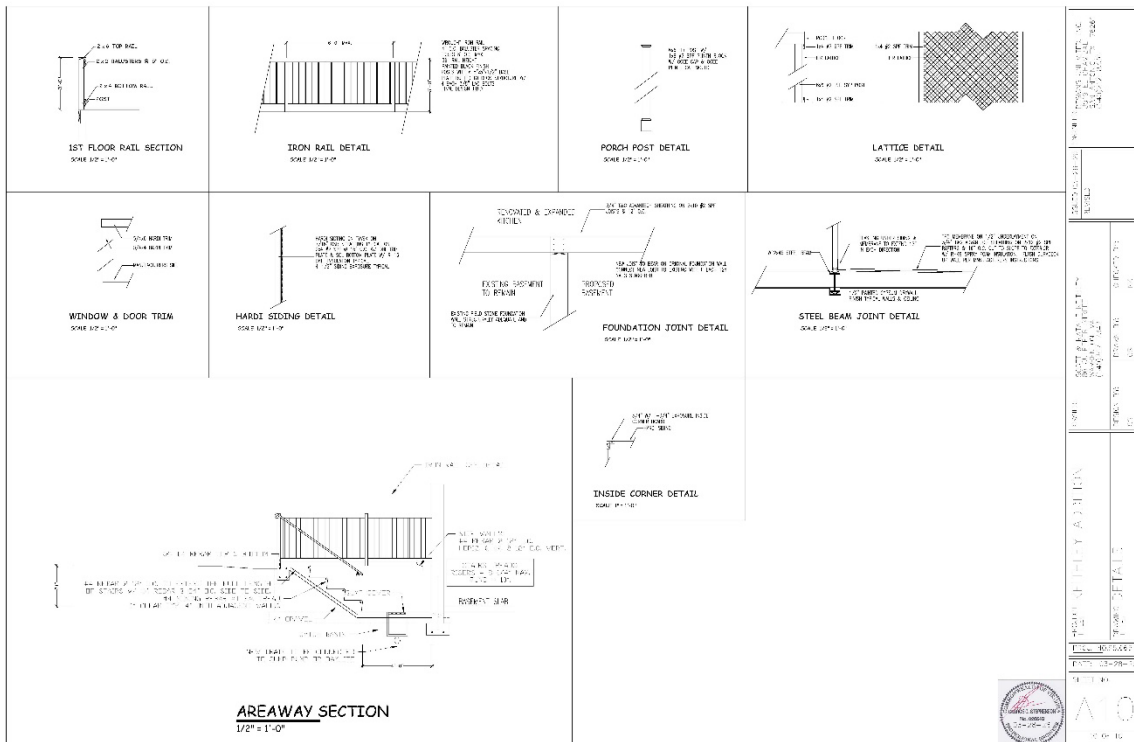
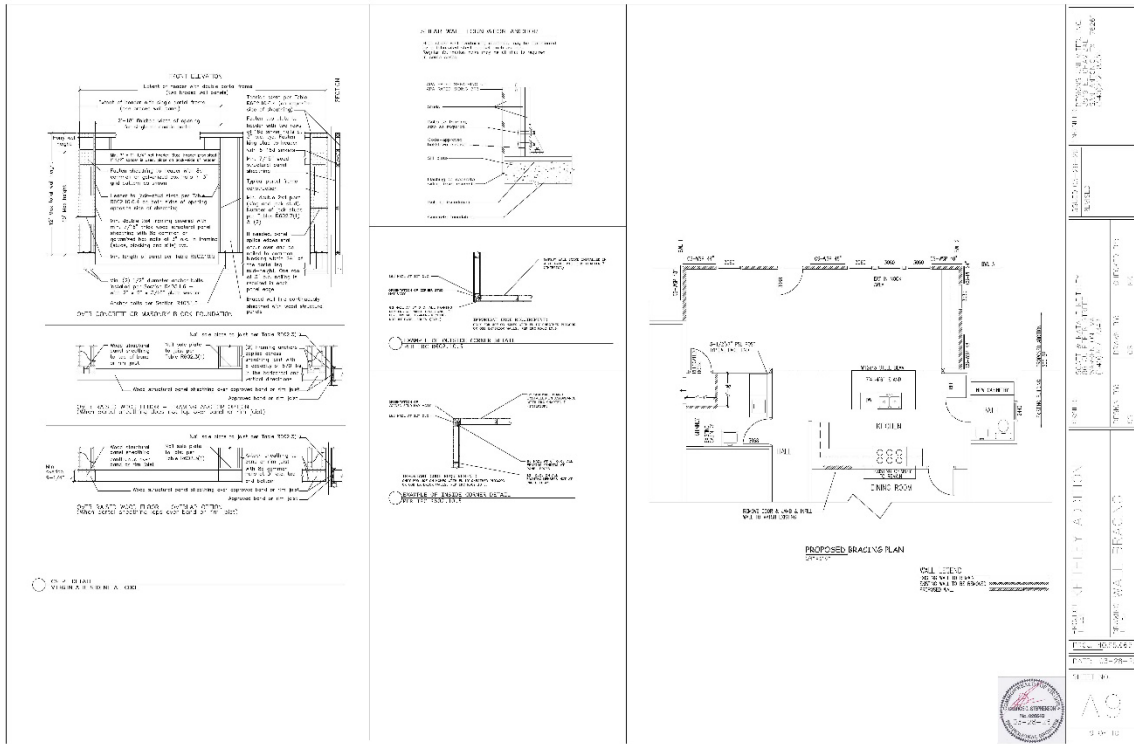








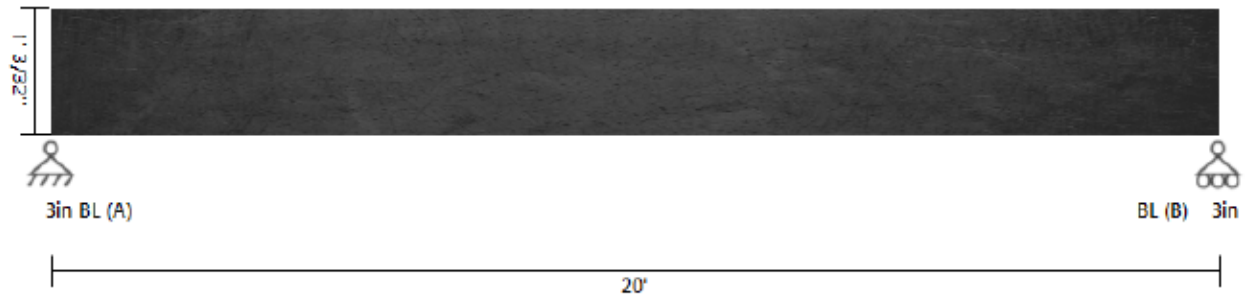




**PASS**

DATE:	6/8/2025	COMPANY:	Designs Unlimited, Inc.
STRUCALC BUILD:	StruCalc Pro	DESIGNED BY:	Chuck Stephenson
CUSTOMER:	--	REVIEWED BY:	--
PROJ. ADDRESS:	--	PROJECT NAME:	Keithley Addition 6-8-25
LEVEL:	Main Floor	LOADING:	ASD
MEMBER NAME:	New Kitchen Beam Steel Option	CODE:	2021 International Building Code
MEMBER TYPE:	FLOOR BEAM	AISC:	AISC 360-16
MATERIAL:	Steel		
W Shapes	W12x45	A36-36	

**New Kitchen Beam Steel Option DIAGRAM**



**BEAM PROPERTIES**

Start (ft): 0 End (ft): 20 Member Slope (in): 0/12 Actual Length (ft): 20

Es x 10 <sup>4</sup>	Fy x 10 <sup>3</sup>	Fu x 10 <sup>3</sup>	Area	Depth	tw	tf	bf	Ix	Iy	Zx	Zy	J	Cw
(psi)	(psi)	(psi)	(in <sup>2</sup> )	(in)	(in)	(in)	(in)	(in <sup>4</sup> )	(in <sup>4</sup> )	(in <sup>3</sup> )	(in <sup>3</sup> )	(in <sup>6</sup> )	(in <sup>6</sup> )
29000	36	58	13.1	12.1	0.335	0.575	8.05	348	50	64.2	19	1.26	1650

**DESIGN PROPERTIES**

Lp	Lr	Flange	Web	Flange	Web	Cv	Cv_WA
(in)	(in)	Flexure	Flexure	Compression	Compression		
97	349	Compact	Compact	Non-Slender	Non-Slender	1	1

**BEAM DATA**

Span	Length (ft)	Unbraced Length		Beam End								
		Top	Bottom	Elev. Diff	Pnt/ft	Pnc/ft	Mn/ft	Mn-OOP/ft	Vn/ft	Vn-OOP/ft	Cb	Cb-OOP
1	20	0	20	0	0	0	115.33	34.13	58.37	99.98	1.136	1

**PASS-FAIL**

	PASS/FAIL	MAGNITUDE	STRENGTH	LOCATION (ft)	AISC CODE	LOAD COMBO
Shear Force Y (lbf)	<b>PASS (83.0%)</b>	9900.0	58370.4	0	G2-1	D+0.75L+0.75S
Moment Y (lbf-ft)	<b>PASS (57.1%)</b>	49500.0	115329.3	10	F2-1	D+0.75L+0.75S
Deflection Y (in)	<b>PASS (72.7%)</b>	0.273	1.000 (=L/240)	10		D+Lr

**REACTIONS**

Y axis	DEAD	LIVE	LIVE ROOF	SNOW	TOTAL
A	4050	2400	3600	5400	15450
B	4050	2400	3600	5400	15450

Reaction Location



**Product Specifications:**

Windows:

**ANDERSEN**  
WINDOWS & DOORS

**400 SERIES**

### CASEMENT & AWNING WINDOWS

Alignment Grid .....	24-25
Tables of Sizes .....	26-30
Specifications .....	31-34
Custom Sizes .....	35
Grille Patterns .....	36
Window Details .....	36-39
Joining Details .....	40
Combination Designs .....	183
Product Performance .....	199

**CUSTOM SIZING**  
in 1/8" (3) increments   
Dimensions in parentheses are in millimeters.

## CASEMENT & AWNING WINDOWS

### FEATURES

#### FRAME

**A** A seamless one-piece Parma-Shield® rigid vinyl frame cover is secured to the exterior of the wood frame to protect it from moisture and maintain an attractive appearance while minimizing maintenance.

**B** The seamless rigid vinyl frame cover extends 1 3/4" (35) around the perimeter of the unit, creating an installation flange to help seal the unit to the structure.

**C** Wood frame members are treated with a water-repellent preservative for long-lasting protection and performance.

**D** Traditional or contemporary interior trim stops are unfinished pine. Low-maintenance prefinished white, dark bronze and black™ interiors are also available. Matching contemporary grilles are available for windows with contemporary stops.

#### SASH

**E** Rigid vinyl encases the entire sash, and a vinyl weld protects each sash corner for superior weather-tightness. This maintains an attractive appearance and minimizes maintenance.

**F** Wood core members provide excellent structural stability and energy efficiency.

**G** Vinyl closed-cell foam weatherstrip is factory installed on the perimeter of the sash.

#### GLASS

**H** Glass spacers are available in black, stainless steel and white.

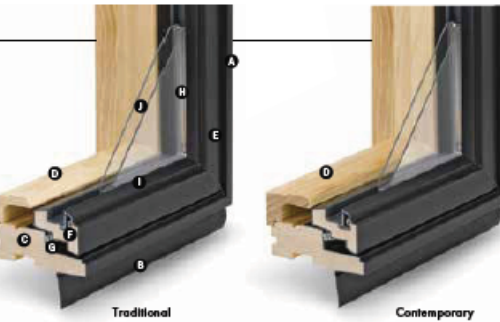
**I** A glazing bead and silicone provide superior weather-tightness and durability.

**J** High-Performance glass options include:

- Low-E4® glass
- Low-E4 HeatLock® glass
- Low-E4 SmartSun™ glass
- Low-E4 SmartSun HeatLock glass
- Low-E4 Sun glass
- Low-E4 PassiveSun® HeatLock glass

Tempered and other glass options are available. Contact your Andersen supplier.

A removable translucent film helps shield the glass from damage during delivery and construction, and simplifies finishing at the job site.



#### Patterned Glass

Patterned glass options are available. See page 11 for more details.

#### HARDWARE

##### Smooth Control Hardware System



The smooth control hardware system employs a worm gear drive for easy operation. Units with wash mode have hinges that move the sash away from the frame to provide easier glass cleaning. CXW15, CXW155, CXW16 and CXW25 sizes are not available with wash mode. Hardware style and finish must be specified. Operator handle and cover are sold separately.

##### Single-Action Casement Lock



On casement windows, a single-action lock easily releases all concealed locking points on the sash, while the reach-out action eliminates binding when closing. The lock handle finish matches the specified hardware finish.

\* Visit [andersenwindows.com/warranty](http://andersenwindows.com/warranty) for details.

\*\* Products with dark bronze or black interiors have matching exteriors. † These finishes are "living finishes" that will change with time and use, see limited warranty for details.

Naturally occurring variations in grain, color and texture of wood make each window one of a kind. All wood interiors are unfinished unless a finish is specified. Printing limitations prevent exact replication of colors and finishes. See your Andersen supplier for actual color and finish samples. Dimensions in parentheses are in millimeters.

### EXTERIORS & INTERIORS

#### EXTERIOR COLORS



#### INTERIOR OPTIONS



#### HARDWARE Sold Separately



##### CONTEMPORARY FOLDING

**Black** | Bright Brass  
Oil Rubbed Bronze | Satin Nickel  
Stone | White

##### TRADITIONAL FOLDING

Antique Brass | Black  
Bright Brass | Distressed Bronze  
Distressed Nickel | Oil Rubbed Bronze  
Satin Nickel | Stone | White

Folding handles avoid interference with window treatments.

##### CLASSIC SERIES™

Stone | White

##### ESTATE™

Antique Brass | **Bright Brass**  
Distressed Bronze | Distressed Nickel  
Oil Rubbed Bronze | Satin Nickel

Bold name denotes finish shown.

#### HARDWARE FINISHES





400 SERIES

400 Series Casement & Awning Windows

Awning Sash Locks



Awning sash locks provide an added measure of security and weather-tightness. Hardware style and finish options are compatible with Andersen casement windows to ensure consistency in appearance when used in combination designs.

PERFORMANCE OPTIONS

Performance Grade (PG) Upgrades

PG upgrade is available for select sizes of standard non-impact casement and awning windows, allowing these units to achieve higher performance ratings. PG ratings are more comprehensive than Design Pressure (DP) ratings for measuring product performance. For up-to-date performance information of individual products, visit [andersenwindows.com](http://andersenwindows.com). Contact your Andersen supplier for availability.

Coastal Windows

400 Series casement and awning windows are available with Stormwatch® Protection. Visit [andersenwindows.com/coastal](http://andersenwindows.com/coastal) or refer to the Andersen 400 Series Coastal Product Guide for more information.



**CAUTION:** Painting and staining may cause damage toigid vinyl. Andersen does not warrant the adhesion or performance of homeowner-applied paint over vinyl or other factory-coated surfaces. For vinyl painting instructions and preparation, contact your Andersen supplier. Do not paint weatherstrip. Cawestake-based stains should not come in contact with Andersen products. Abrasive cleaners or solutions containing corrosive solvents should not be used on Andersen products. See page 228 for a complete list of cautions.

\*Visit [andersenwindows.com/warranty](http://andersenwindows.com/warranty) for details.

\*\*TruScene insect screens let in over 25% more fresh air than standard Andersen fiberglass insect screens. Dimensions in parentheses are in millimeters.

ACCESSORIES Sold Separately

FRAME

Extension Jamb



The base jamb depth is 2 3/4" (73). Extension jambs are available in unfinished pine, maple and oak, or prefinished white, dark bronze and black. Some sizes may be veneered.

Factory-applied and non-applied extension jambs are available in 1/2" (1.5) increments between 4 3/8" (116) and 7 1/4" (181). Extension jambs can be factory applied to either three sides (stool and apron) or four sides (picture frame casing).

For overall jamb depths greater than 7 1/4" (181), interior extension jambs are available in 1/8" (1.5) increments between 7 1/4" (181) and 9" (229) for field application. They are available in 8' (2438) and 12' (3658) lineals.

Thick Replacement Extension Jambs

To help preserve original alignment of trim and paint lines in replacement situations, special 1 1/4" (29)-thick replacement extension jambs are available. Factory-applied and non-applied extension jambs are available in 1/8" (1.5) increments between 4 3/8" (116) and 7 1/4" (181). Non-applied extension jambs are available in 12' (3658) lineals. Shown on page 43. Detail on page 36.

Drywall Return Bead



A narrow or wide drywall return bead is available with unfinished pine, or prefinished white, dark bronze and black interiors. Can be ordered factory applied or in non-applied lineals. Detail on page 36.

HARDWARE

Corrosion-Resistant Components

Corrosion-resistant hinge and operator arm hardware is designed for applications in harsh and corrosive environments such as heavy industrial or coastal areas.\*

Window Opening Control Device



A window opening control device is available, which limits sash travel to less than 4" (102) when the window is first opened. Available factory applied, or as a field-applied kit in black, stone and white.

Power Operator for Awning Windows



Awning windows can be ordered with an operator enhanced by PowerAssist™ technology that opens and closes the window with the touch of a button, and eliminates the need for sash locks. Easy to install, the 24-volt system features a concealed window power drive, battery backup and a moisture sensor that closes the window when it rains. It is controlled by a wall-mounted console that includes a power box, battery, touch pad and mounting bracket. A remote control is sold separately. Windows can be ordered factory prepped or as a field-applied kit. Power driver requires field installation. Available for windows up to 5' (1524) wide. Not available for windows with Stormwatch Protection or PG upgrade.

SPECIAL OPERATOR HANDLES

Available in Classic Series™ design only.

Compact Operator Handle



Specially designed for situations where window treatments interfere with handle operation. Available in a stone or white finish.

Operator Spline Cover



An operator spline cover is an attractive cap that covers the rero operator stud when the handle that controls access or operation of the window has been removed. The operator spline cover should not be used on any window designated or intended for emergency escape or rescue. Consult your local building code official for egress code requirements in your area.

Metal T-Handle



Our smallest operator handle, the metal T-handle, may make it more difficult for young children aged 5 and under to open the window. For more information on child safety, write:

Andersen Corporation  
LookOut For Kids® Program  
100 Fourth Avenue North  
Bayport, MN 55003  
Call: 800-313-8889  
Email: [lofk@andersencorp.com](mailto:lofk@andersencorp.com)  
Website: [andersenwindows.com/windowsafety](http://andersenwindows.com/windowsafety)

Easy-Grip Handle



A larger knob makes it easier to grip and operate. Available in a stone or white finish.

ANDERSEN® ART GLASS

Andersen art glass panels come in a variety of original patterns. For more information, see the Art Glass section starting on page 175 or visit [andersenwindows.com/artglass](http://andersenwindows.com/artglass).

INSECT SCREENS

TruScene® Insect Screens



Our TruScene insect screens let in over 25% more fresh air\*\* and provide 50% greater clarity than conventional Andersen insect screens, all while keeping out unwanted small insects. For casement and awning windows, frames are available in white, stone, dark bronze and black, or with pine veneer frame interiors to blend with the wood interior of the window.

Conventional Insect Screens

Conventional insect screens have charcoal gray powder-coated aluminum screen mesh. Frames are available in white, stone, dark bronze and black.

GRILLES & EXTERIOR TRIM

Grilles are available in a variety of configurations and widths. See page 18 for details. Available with Andersen exterior trim. See the Exterior Trim section starting on page 177.





## CASEMENT & AWNING WINDOWS

**Table of Sizes for Casement and Casement/Awning Transom Windows**  
 Scale 1/4" (3) = 1'-0" (305) – 1:96

Window Dimension	1'-5"	1'-8 1/2"	2'-0 1/8"	2'-4 3/8"	2'-7 1/2"	2'-11 15/16"	2'-9 3/4"	3'-4 3/4"	4'-0"	4'-8 1/2"
<b>Minimum Rough Opening</b>	1'-5 1/2" (445)	1'-9" (533)	2'-0 5/8" (625)	2'-4 7/8" (733)	2'-8" (813)	3'-0 1/2" (927)	2'-10 1/4" (870)	3'-5 1/4" (1048)	4'-0 1/2" (1232)	4'-9" (1448)
Unobstructed Glass (casement, single sash only)	12 5/8" (321)	16 1/8" (410)	19 3/4" (502)	24" (610)	27 1/8" (689)	31 3/4" (802)	12 5/8" (321)	16 1/8" (410)	19 3/4" (502)	24" (610)
Unobstructed Glass (single transom)	12 3/4" (310)	15 1/4" (398)	19 5/8" (491)	23 7/8" (599)	26 1/4" (678)	31 1/8" (791)	28 15/16" (735)	35 15/16" (913)	43 3/16" (1097)	51 11/16" (1313)

CUSTOM WIDTHS – 17" to 84 5/8"										
1'-0"	1'-0 1/2" (305)	1'-1 1/2" (381)	1'-2 1/2" (463)	1'-3 1/2" (545)	1'-4 1/2" (627)	1'-5 1/2" (709)	1'-6 1/2" (791)	1'-7 1/2" (873)	1'-8 1/2" (955)	1'-9 1/2" (1037)
1'-0"	1'-0 1/2" (305)	1'-1 1/2" (381)	1'-2 1/2" (463)	1'-3 1/2" (545)	1'-4 1/2" (627)	1'-5 1/2" (709)	1'-6 1/2" (791)	1'-7 1/2" (873)	1'-8 1/2" (955)	1'-9 1/2" (1037)

CUSTOM HEIGHTS – 24 1/4" to 71 3/8"										
2'-0 1/8"	2'-0 1/8" (613)	2'-0 5/8" (625)	2'-0 1/2" (610)	2'-0 3/4" (618)	2'-1 1/8" (626)	2'-1 1/4" (634)	2'-1 3/8" (642)	2'-1 7/8" (650)	2'-2 1/8" (658)	2'-2 1/4" (666)
2'-4 3/8"	2'-4 3/8" (733)	2'-4 7/8" (745)	2'-4 1/2" (730)	2'-4 5/8" (738)	2'-5 1/8" (746)	2'-5 1/4" (754)	2'-5 3/8" (762)	2'-5 7/8" (770)	2'-6 1/8" (778)	2'-6 1/4" (786)
2'-7 1/2"	2'-7 1/2" (813)	2'-7 5/8" (821)	2'-7 1/4" (816)	2'-7 3/8" (824)	2'-7 7/8" (832)	2'-8 1/8" (840)	2'-8 1/4" (848)	2'-8 3/8" (856)	2'-8 7/8" (864)	2'-9 1/8" (872)
2'-11 15/16"	2'-11 15/16" (870)	2'-11 3/4" (878)	2'-11 1/2" (873)	2'-11 5/8" (881)	2'-11 7/8" (889)	2'-12 1/8" (897)	2'-12 1/4" (905)	2'-12 3/8" (913)	2'-12 7/8" (921)	2'-13 1/8" (929)
2'-9 3/4"	2'-9 3/4" (857)	2'-9 7/8" (865)	2'-9 1/2" (860)	2'-9 5/8" (868)	2'-9 7/8" (876)	2'-10 1/8" (884)	2'-10 1/4" (892)	2'-10 3/8" (900)	2'-10 7/8" (908)	2'-11 1/8" (916)
3'-4 3/4"	3'-4 3/4" (1035)	3'-4 7/8" (1043)	3'-4 1/2" (1038)	3'-4 5/8" (1046)	3'-4 7/8" (1054)	3'-5 1/8" (1062)	3'-5 1/4" (1070)	3'-5 3/8" (1078)	3'-5 7/8" (1086)	3'-6 1/8" (1094)
4'-0"	4'-0" (1219)	4'-0 1/2" (1227)	4'-0 1/4" (1222)	4'-0 3/8" (1230)	4'-0 7/8" (1238)	4'-1 1/8" (1246)	4'-1 1/4" (1254)	4'-1 3/8" (1262)	4'-1 7/8" (1270)	4'-2 1/8" (1278)
4'-8 1/2"	4'-8 1/2" (1435)	4'-8 7/8" (1443)	4'-8 1/4" (1438)	4'-8 3/8" (1446)	4'-8 7/8" (1454)	4'-9 1/8" (1462)	4'-9 1/4" (1470)	4'-9 3/8" (1478)	4'-9 7/8" (1486)	4'-10 1/8" (1494)
4'-11 1/8"	4'-11 1/8" (1521)	4'-11 3/16" (1529)	4'-11 1/4" (1524)	4'-11 1/2" (1532)	4'-11 3/4" (1540)	4'-11 7/8" (1548)	4'-12 1/8" (1556)	4'-12 1/4" (1564)	4'-12 3/8" (1572)	4'-12 7/8" (1580)
5'-4 1/8"	5'-4 1/8" (1641)	5'-4 3/16" (1649)	5'-4 1/4" (1644)	5'-4 1/2" (1652)	5'-4 3/4" (1660)	5'-4 7/8" (1668)	5'-5 1/8" (1676)	5'-5 1/4" (1684)	5'-5 3/8" (1692)	5'-5 7/8" (1700)
5'-11 1/8"	5'-11 1/8" (1861)	5'-11 3/16" (1869)	5'-11 1/4" (1864)	5'-11 1/2" (1872)	5'-11 3/4" (1880)	5'-11 7/8" (1888)	6'-0 1/8" (1896)	6'-0 1/4" (1904)	6'-0 3/8" (1912)	6'-0 7/8" (1920)

\* Window Dimension always refers to outside frame-to-frame dimension.  
 \* Minimum Rough Opening dimensions may need to be increased to allow for use of building wraps, flashing, sill paning, brackets, fasteners or other items. See pages 222-223 for more details.  
 \* Dimensions in parentheses are in millimeters.  
 \* Meets or exceeds clear opening area of 5.7 sq. ft. or 0.53 m<sup>2</sup>, clear opening width of 20" (508) and clear opening height of 24" (610) with appropriate hinge specified. See tables on pages 31-32.  
 \* Meets clear opening width of 20" (508) using hinge with wash mode and control bracket (bracket can be pivoted for clearing protrus) and meets clear opening width of 22" (559) using hinge for widest clear opening.  
 \*\* Available with straight-arm operation (hinged for widest clear opening) only.



400 SERIES

400 Series Casement & Awning Windows

5'-2 3/4" (1594)	5'-11 5/8" (1819)	5'-1" (1549)	5'-11 7/8" (1826)	7'-0 5/8" (2149)
5'-3 1/4" (1607)	6'-0 1/8" (1832)	5'-1 1/2" (1562)	6'-0 3/8" (1838)	7'-1 1/8" (2162)
27 1/8" (689)	31 3/4" (802)	16 1/8" (410)	19 3/4" (502)	24" (610)
57 15/16" (1472)	66 13/16" (1697)	56 3/16" (1427)	67 1/8" (1703)	79 3/16" (2027)

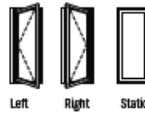
CTR5210	CTR51110	CTR5110	CTR6010	CTR7010
26 11/16" (678)	31 1/8" (791)	15 11/16" (398)	19 15/16" (506)	23 3/16" (601)
CTR22810	CTR23010	CTR31810	CTR32010	CTR32410

CX23	CXW23	CX33	C33	CW33*
CX235*	CXW235*	CX335	C335	CW335*
CX24*	CXW24*	CX34	C34	CW34**
CX245*	CXW245*	CX345	C345	CW345**
CX25*	CXW25**	CX35	C35	CW35**



Custom-size windows are available in 1/8" (3) increments. Windows can also be custom sized to match standard sizes ending in 1/32" (1.5). Single windows only. See page 35 for custom sizes and specifications.



Choose left, right or stationary as viewed from the exterior. In addition to venting shown in table, other standard configurations are available for single, twin and triple windows. Transom (CTR) windows are stationary only.

Twin and triple windows shown have one continuous outer frame.

Transom (CTR) windows can be used over casement or awning windows, and may be rotated 90° and used as a sidelight with casement, awning or picture windows.

Available with traditional or contemporary trim stops. Grille patterns shown on page 36. Details shown on pages 36-39.

\* Window Dimension always refers to outside frame-to-frame dimension.  
 \* Minimum Rough Opening dimensions may need to be increased to allow for use of building wraps, flashing, sill panelling, brackets, fasteners or other items. See pages 222-223 for more details.  
 \* Dimensions in parentheses are in millimeters.  
 \*Meets or exceeds clear opening area of 5.7 sq. ft. or 0.53 m<sup>2</sup>, clear opening width of 20" (508) and clear opening height of 24" (610) with appropriate hinge specified. See tables on pages 31-32.  
 \*Meets clear opening width of 20" (508) using hinge with wash mode and control bracket (bracket can be pivoted for cleaning position) and meets clear opening width of 22" (559) using hinge for widest clear opening.  
 \*\* Available with straight-arm operation (hinged for widest clear opening) only.

## EASY CONNECT JOINING SYSTEM

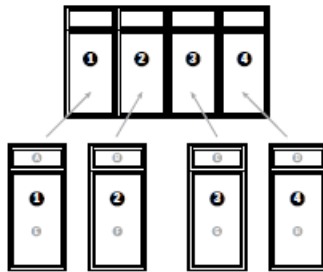
Our Easy Connect Joining System\* provides enhanced performance, design flexibility, and job site conveniences. Choose from three options — partially assembled factory-prepped combinations, fully assembled factory-joined combinations or on-site joining kits — to achieve monumental window combinations. These joining options utilize the strength and durability of fiberglass construction, and offer the design flexibility of achieving both one-way and two-way combinations. Visit [andersenwindows.com/joining](http://andersenwindows.com/joining) for more information.



Innovative patented joining system utilizes 5 3/4" (146) interlocking fiberglass joining plates for 4 9/16" (116) base jamb depths. 7 3/4" (197) interlocking fiberglass joining plates are available for higher performance and are required for hinged inswing patio doors with 6 9/16" (167) base jamb depths. They are available in 14' (4267) lengths, and are field cut and applied.

### Factory-Prepped Combinations

Receive lighter, easier-to-handle, pre-assembled smaller combinations that join as you install them into the rough opening, making it easier to install large combinations. In fact, most contractors surveyed said they could reduce the number of installers by 50% using the Andersen® Easy Connect Joining System.\*\*



### Factory-Joined Combinations

Eliminate the need for job site assembly and receive fully joined, factory-assembled window combinations to fit rough openings up to 12' (3658) x 8' (2438) or 8' (2438) x 12' (3658).



	ASSEMBLY	READY TO INSTALL	NUMBER OF INSTALLERS**	HALLMARK CERTIFIED†	TESTED TO AAMA 450	PERFORMANCE	COMBINATION SIZE LIMITATIONS
FACTORY-PREPARED COMBINATIONS	IN THE OPENING	●	FEWER	●	●	Extensive unit combination size options available certified to PG70† High Velocity Hurricane Zone (HVHZ) approved	ROUGH OPENING MAX: 12' (3658) in one direction with no maximum in the other direction
FACTORY-JOINED COMBINATIONS	FACTORY	●	MORE	●	●	Extensive unit combination size options available certified to PG70† High Velocity Hurricane Zone (HVHZ) approved	ROUGH OPENING MAX: 12' x 8' or 8' x 12' (3658 x 2438 or 2438 x 3658)
JOINING KITS	JOB SITE		MORE	●	●	Extensive unit combination size options available certified to PG70† High Velocity Hurricane Zone (HVHZ) approved	ROUGH OPENING MAX: 12' (3658) in one direction with no maximum in the other direction

\*Available on select windows, see your Andersen supplier for details.

\*\*69% of 156 builders/general contractors in a 2018 survey said they could reduce the number of installers by half using the Easy Connect Joining System when comparing the installation of a 12' (3658) wide x 8' (2438) high pre-assembled window combination unit with four 3' (914) wide x 8' (2438) high window combination units.

†Easy Connect and other fiberglass joins are certified up to PG70 when installed according to Andersen Installation Instructions. Structural performance of any combination is only as high as the lowest structural performance of any individual unit or joining material in the combination. Dimensions in parentheses are in millimeters.

Doors:



400 SERIES



## FRENCHWOOD® HINGED INSWING PATIO DOORS

Table of Sizes .....	154-155
Specifications .....	156
Custom Sizes .....	157
Grille Patterns .....	157
Door Details .....	158-160
Joining Details .....	160
Combination Designs .....	183
Product Performance .....	199

**CUSTOM SIZING**  
in 1/8" (3) increments



Dimensions in parentheses are in millimeters.

## FRENCHWOOD® HINGED INSWING PATIO DOORS

### FEATURES

#### FRAME

**A** All basic exterior frame members are fiberglass reinforced composite that maintains an attractive appearance while minimizing maintenance.

**B** The exterior frame members are attached to a water-repellent preservative-treated wood subframe for long-lasting protection and performance. The subframe is grooved to accept extension jambs.

#### SILL

**C** The sill is made with three-piece construction. The subsill is made of Fibrex® material, and the sill stop is solid oak. The exterior sill member is made of extruded aluminum with an attractive wear-resistant heat-baked finish in neutral gray. This combination of materials combines durability and low maintenance with excellent insulating characteristics.

#### PANEL

**D** Panel interior surfaces are unfinished pine veneer. Unfinished maple or oak veneers are available as options. Low-maintenance prefinished white interiors are also available.

Hinged inswing operating panels are left-hand active, right-hand active or two-panel active-passive jamb hinged.

**E** The exterior of the wood door panel is protected with a long-lasting urethane base finish available in white, Sandstone, Terratone and forest green.

**F** A factory-applied one-piece compression-type rubber weatherstrip continues in one plane around the panel to provide maximum effectiveness against water and air infiltration. Corners of the weatherstrip are welded to eliminate gaps between the panel and the frame/sill shoulder.

#### GLASS

**G** Glass spacers are available in black, stainless steel and white.

**H** Panels are silicone bed glazed and finished with an interior wood stop.



**I** High-Performance dual-pane glass options include:

- Low-E4® tempered glass
- Low-E4 HeatLock® tempered glass
- Low-E4 SmartSun™ tempered glass
- Low-E4 SmartSun HeatLock tempered glass
- Low-E4 Sun tempered glass
- Low-E4 PassiveSun® HeatLock tempered glass

For even greater energy performance, 1" (25) triple-pane glass is available in these options:

- Low-E4 tempered glass
- Low-E4 Enhanced tempered glass
- Low-E4 Enhanced HeatLock tempered glass
- Low-E4 SmartSun tempered glass
- Low-E4 SmartSun Enhanced tempered glass
- Low-E4 SmartSun Enhanced HeatLock tempered glass

Additional glass options are available. Contact your Andersen supplier.

A removable translucent film helps shield the glass from damage during delivery and construction, and simplifies finishing at the job site.

Patterned glass options are available. See page 11 for more details.

### EXTERIORS & INTERIORS

#### EXTERIOR COLORS



#### INTERIOR OPTIONS



### ANDERSEN® HARDWARE Sold Separately



Bold name denotes finish shown.

#### HARDWARE FINISHES



\* Visit [andersenwindows.com/warranty](http://andersenwindows.com/warranty) for details.

\*\* Bright brass and satin nickel finishes have a Physical Vapor Deposition (PVD) finish for improved durability, and feature a 10-year limited warranty.

† These finishes are "living finishes" that will change with time and use, see limited warranty for details.

Albany and Tribeca hardware are zinc die cast with a durable powder-coated finish. Other hardware is solid forged brass.

Mix-and-match interior and exterior style and finish options are available.

Matching hinges are available in most finishes for inswing patio doors.

Andersen patio doors are not intended for use as entry doors.

All trademarks where denoted are marks of their respective owners.

Naturally occurring variations in grain, color and texture of wood make each window one of a kind. All wood interiors are unfinished unless a finish is specified.

### DESIGNER HARDWARE Sold Separately

See pages 16-17 for designer hinged patio door hardware options.

In addition to Andersen hardware, Andersen also offers Ashley Norton® Baldwin® and FSB® designer hardware, which is available in an extensive variety of styles and finishes for hinged patio doors.

Printing limitations prevent exact replication of colors and finishes. See your Andersen supplier for actual color and finish samples. Dimensions in parentheses are in millimeters.



400 SERIES

**Blinds-Between-the-Glass**



Blinds-between-the-glass are available for select hinged patio door sizes when ordered with Low-E4<sup>®</sup> tempered glass, and a pine or prefinished white door interior and any of our four exterior colors. White 1/2" (13) aluminum slot blinds come mounted between two panes of insulated glass. Blinds are magnetically controlled and can be tilted, raised and lowered using low-profile controls. Available in 2708, 27011, 3168, 31611, 5068, 50611, 6068, 60611, 9068 and 90611 door sizes. Contact your Andersen supplier for more information.

**HARDWARE**

**PVD Finish**

Andersen<sup>®</sup> bright brass and satin nickel patio door hardware finishes have a Physical Vapor Deposition (PVD) coating. High-quality PVD finishes are especially resistant to corrosion, scratches, and fading for improved hardware durability and extended lifespan.

**Multi-Point Locking System**



The multi-point locking system, with a hook bolt above and below the center dead bolt, provides a weathertight seal and enhanced security.

**Adjustable Hinges**

Adjustable hinges have ball-bearing pivots for smooth, frictionless movement, and feature easy horizontal and vertical adjustments, plus release tabs for easy panel removal. Available in finishes that coordinate with Andersen hardware trim sets.



\*Exterior extension jambs for hinged inswing patio doors must be applied before installing into opening.

\*\* Visit [andersenwindows.com/warranty](http://andersenwindows.com/warranty) for details.

<sup>®</sup>Delini<sup>®</sup> is a registered trademark of E.I. du Pont de Nemours and Company. Dimensions in parentheses are in millimeters.

**ACCESSORIES** Sold Separately

**FRAME**

**Interior Extension Jambs**

The base jamb depth is 4 3/8" (116). Pine, maple and oak veneers, or prefinished white interior extension jambs are available in 1/2" (1.5) increments between 5 1/8" (129) and 7 1/4" (181). Interior extension jambs will restrict the full opening of the inswing door. See page 157.

**Exterior Extension Jambs\***

An exterior extension jamb system is available for 5 1/2" (133), 6 3/8" (167) and 7 1/4" (192) wall thicknesses. For walls over 4 1/2" (114), the exterior sill extender and exterior extension jamb system allows the door to be installed flush to the interior, so the hinged door will open flat against the interior wall. Color matched to the exterior of the finished door, this system provides a low-maintenance finished exterior appearance. Exterior extension jambs can also be used with the double screen track.

**Threshold**



A maple or oak threshold is available for finishing the interior of the sill.

**Ramped Sill Insert**



Ramped sills in maple or oak provide a smooth transition from interior to exterior. Ramped sills cannot be used with insect screens. Check with local and federal officials to determine if product meets accessibility codes. Shown with a gliding patio door.

**Sill Support**



An aluminum sill support is designed to lock into a channel under the sill and tie back into the wall. This will offer support to the outermost sill section when needed. Available in a neutral gray finish.

**HARDWARE**

**Exterior Keyed Lock**



A six-pin key cylinder lock allows the door to be locked and unlocked from the exterior. Available in styles and finishes that coordinate with Andersen hardware trim sets.

**Handle Extension**



Extends interior door handle an additional 1" (25) from the door interior panel to accommodate

blinds or shades. Kit includes one handle extender and spindle. A second extender may be added to the spindle to increase the length an additional 1" (25) to a 2" (51) total extension. Extenders are available in finishes that coordinate with Andersen hardware trim sets.

**Strike Plate Extensions**

Antique brass, bright brass, oil rubbed bronze and satin nickel strike plate extensions are available for 5 1/2" (133), 6 3/8" (167), 7 1/4" (181) and 7 3/8" (192) wall depths.

**Construction Lock**



This hardware can be used to help secure the structure during the construction phase of the project. It features an undersized escutcheon plate, which makes on-site finishing easier.

**Panel Stop**



A hinged door panel stop helps prevent wall damage when opening an inswing door. Available in finishes that coordinate with Andersen door hardware.

**ANDERSEN<sup>®</sup> ART GLASS**

Andersen art glass panels come in a variety of original patterns. For more information, see the Art Glass section starting on page 175 or visit [andersenwindows.com/artglass](http://andersenwindows.com/artglass).

**INSECT SCREENS**

Screens have a long-lasting<sup>™</sup> fiberglass screen mesh with a charcoal gray finish. Frames are color matched to the exterior of the door.

**Gliding Screen**

Available for all two- and three-panel doors. Features Delini<sup>®</sup> material injection-molded bottom rollers with self-contained leveling adjusters. Gliding screens are not available for 4" (1219)-wide doors. A double-screen track is required for some two-panel doors, see below.



**Double-Screen Track**



A double-screen track is required to install gliding insect screens on two-panel doors when both panels open.

**Hinged Screens**

Available for single-panel doors and two-panel doors when both panels open.



**GRILLES**

Grilles are available in a variety of configurations and widths. See page 18 for details.

**EXTERIOR TRIM**

Available with Andersen exterior trim. See the Exterior Trim section starting on page 175.

**SIDELIGHTS & TRANSOMS**

Andersen Frenchwood<sup>®</sup> patio door sidelights and transoms feature elegant lines that match our Frenchwood hinged patio doors. See pages 161-164 for details.

CAUTION: Painting and staining may cause damage to rigid vinyl. Andersen does not warrant the adhesion or performance of homeowner-applied paint over vinyl or other factory-coated surfaces. For vinyl painting instructions and preparation, contact your Andersen supplier. Do not paint weatherstrip. Ceresite-based stains should not come in contact with Andersen products. Abrasive cleaners or solutions containing caustic solvents should not be used on Andersen products. See page 223 for a complete list of cautions.

400 Series Frenchwood<sup>®</sup> Hinged Inswinging Patio Doors

## FRENCHWOOD® HINGED INSWING PATIO DOORS

**Table of Sizes for Frenchwood® Hinged Inswing Patio Doors**  
Scale 1/8" (3) = 1'-0" (305) – 1:96

Door Dimension	2'-0 1/2" (620)		4'-0" (1219)	4'-0" (1219)				
<b>Minimum Rough Opening</b>	2'-1" (634)		4'-1" (1242)	4'-1" (1242)				
Unobstructed Glass (single panel only)	13 1/4" (336)		13 1/4" (336)	13 1/4" (336)				
3 heights								
	FWH2168S FWH21611S FWH2180S		FWH4168APLR FWH41611APLR FWH4180APLR	FWH4168PALR FWH41611PALR FWH4180PALR				
Door Dimension	2'-6 1/8" (765)	2'-6 1/8" (765)	2'-6 1/8" (765)	4'-11 1/4" (1504)	4'-11 1/4" (1504)	4'-11 1/4" (1504)	4'-11 1/4" (1504)	4'-11 1/4" (1504)
<b>Minimum Rough Opening</b>	2'-7" (787)	2'-7" (787)	2'-7" (787)	5'-0" (1524)	5'-0" (1524)	5'-0" (1524)	5'-0" (1524)	5'-0" (1524)
Unobstructed Glass (single panel only)	18 7/8" (479)	18 7/8" (479)	18 7/8" (479)	18 7/8" (479)	18 7/8" (479)	18 7/8" (479)	18 7/8" (479)	18 7/8" (479)
3 heights								
	FWH2768S FWH27611S FWH2780S	FWH2768AR FWH27611AR FWH2780AR	FWH2768AL FWH27611AL FWH2780AL	FWH5068SS FWH50611SS FWH5080SS	FWH5068ASR FWH50611ASR FWH5080ASR	FWH5068SAL FWH50611SAL FWH5080SAL	FWH5068APLR FWH50611APLR FWH5080APLR	FWH5068PALR FWH50611PALR FWH5080PALR
Door Dimension	2'-8 1/8" (816)	2'-8 1/8" (816)	2'-8 1/8" (816)	5'-3 1/4" (1607)	5'-3 1/4" (1607)	5'-3 1/4" (1607)	5'-3 1/4" (1607)	5'-3 1/4" (1607)
<b>Minimum Rough Opening</b>	2'-9" (838)	2'-9" (838)	2'-9" (838)	5'-4" (1626)	5'-4" (1626)	5'-4" (1626)	5'-4" (1626)	5'-4" (1626)
Unobstructed Glass (single panel only)	20 7/8" (530)	20 7/8" (530)	20 7/8" (530)	20 7/8" (530)	20 7/8" (530)	20 7/8" (530)	20 7/8" (530)	20 7/8" (530)
3 heights								
	FWH2968S FWH29611S FWH2980S	FWH2968AR FWH29611AR FWH2980AR	FWH2968AL FWH29611AL FWH2980AL	FWH5468SS FWH54611SS FWH5480SS	FWH5468ASR FWH54611ASR FWH5480ASR	FWH5468SAL FWH54611SAL FWH5480SAL	FWH5468APLR FWH54611APLR FWH5480APLR	FWH5468PALR FWH54611PALR FWH5480PALR
Door Dimension	3'-0 1/8" (918)	3'-0 1/8" (918)	3'-0 1/8" (918)	5'-11 1/4" (1810)	5'-11 1/4" (1810)	5'-11 1/4" (1810)	5'-11 1/4" (1810)	5'-11 1/4" (1810)
<b>Minimum Rough Opening</b>	3'-1" (940)	3'-1" (940)	3'-1" (940)	6'-0" (1829)	6'-0" (1829)	6'-0" (1829)	6'-0" (1829)	6'-0" (1829)
Unobstructed Glass (single panel only)	24 7/8" (632)	24 7/8" (632)	24 7/8" (632)	24 7/8" (632)	24 7/8" (632)	24 7/8" (632)	24 7/8" (632)	24 7/8" (632)
3 heights								
	FWH3168S FWH31611S FWH3180S	FWH3168AR FWH31611AR FWH3180AR	FWH3168AL FWH31611AL FWH3180AL	FWH6068SS FWH60611SS FWH6080SS	FWH6068ASR FWH60611ASR FWH6080ASR	FWH6068SAL FWH60611SAL FWH6080SAL	FWH6068APLR FWH60611APLR FWH6080APLR	FWH6068PALR FWH60611PALR FWH6080PALR



Custom-size patio doors are available in 1/8" (3) increments. See page 157 for custom sizes and specifications.

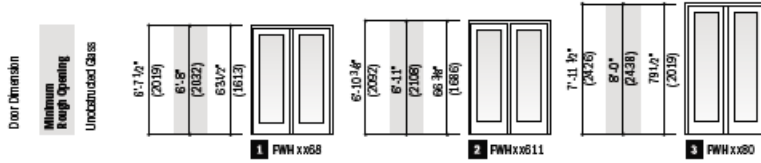
Viewed from the exterior. Stationary (S) doors can be used as an individual unit or as a sidelight. In addition to venting door panels shown in the table, other standard configurations are available for two- and three-panel doors. Grille patterns shown on page 157. Details shown on pages 158-160.

\* Door Dimension always refers to outside frame-to-frame dimension.  
\* Minimum Rough Opening dimensions may need to be increased to allow for use of building wraps, flashing, sill panelling, brackets, fasteners or other items. See pages 222-223 for more details.  
\* Dimensions in parentheses are in millimeters.



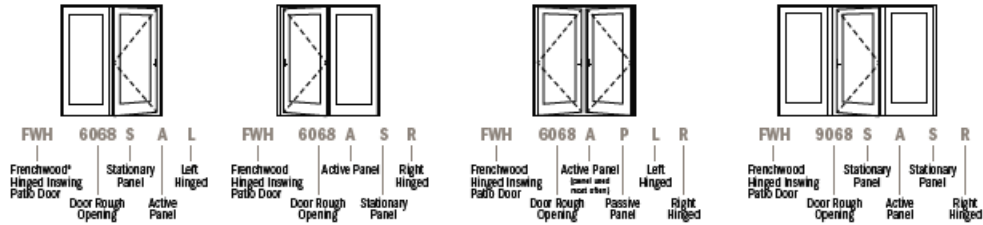
**400 SERIES**

**Patio Door Heights**

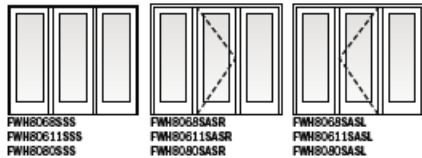


**Order Designation Description**

Viewed from the exterior.



7'-11 1/8"	7'-11 1/8"	7'-11 1/8"
(2416)	(2416)	(2416)
8'-0"	8'-0"	8'-0"
(2438)	(2438)	(2438)
20 7/8"	20 7/8"	20 7/8"
(530)	(530)	(530)



8'-11 1/8"	8'-11 1/8"	8'-11 1/8"
(2721)	(2721)	(2721)
9'-0"	9'-0"	9'-0"
(2743)	(2743)	(2743)
24 7/8"	24 7/8"	24 7/8"
(632)	(632)	(632)



\* Door Dimension always refers to outside frame-to-frame dimension.  
 \* Minimum Rough Opening dimensions may need to be increased to allow for use of building wraps, flashing, sill panelling, brackets, fasteners or other items. See pages 222-223 for more details.  
 \* Dimensions in parentheses are in millimeters.

400 Series Frenchwood®  
 Hinged Inswing  
 Patio Doors

FRENCHWOOD® HINGED INSWING PATIO DOORS

Opening and Area Specifications for Frenchwood® Hinged Inswing Patio Doors

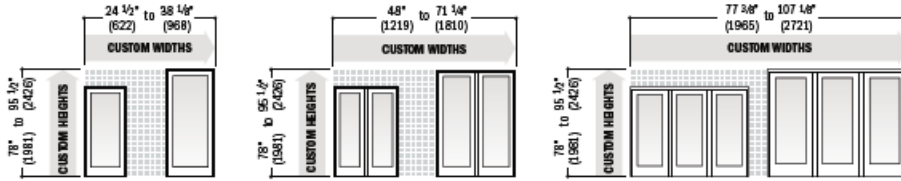
Door Number	Number of Panels in Open Position	Clear Opening Area Sq. Ft./ (m <sup>2</sup> )	Clear Opening Maximums			Glass Area Sq. Ft./ (m <sup>2</sup> )	Vent Area Sq. Ft./ (m <sup>2</sup> )	Overall Door Area Sq. Ft./ (m <sup>2</sup> )
			90° Open Position Width Inches/(mm)	Full Open Position Width Inches/(mm)	Height Inches/(mm)			
FWN21888	-	-	-	-	-	5.74 (0.58)	-	13.39 (1.24)
FWN2788	1	12.98 (1.21)	24 1/2" (630)	26" (660)	75 1/2" (1911)	8.32 (0.77)	12.98 (1.21)	16.63 (1.55)
FWN2988	1	14.02 (1.30)	26 1/2" (681)	28" (711)	75 1/2" (1911)	9.20 (0.86)	14.02 (1.30)	17.74 (1.65)
FWN3188	1	16.11 (1.50)	30 1/2" (783)	32" (813)	75 1/2" (1911)	10.96 (1.02)	16.11 (1.50)	19.95 (1.85)
FWN4188	2	21.43 (1.99)	41" (1099)	43 1/2" (1112)	75 1/2" (1911)	11.68 (1.09)	21.43 (1.99)	26.50 (2.46)
FWN4188	1	11.01 (1.02)	19 1/2" (505)	21 1/2" (555)	75 1/2" (1911)	11.68 (1.09)	11.01 (1.02)	26.50 (2.46)
FWN5088	1 - AS/SA	12.98 (1.21)	24 1/2" (630)	26" (660)	75 1/2" (1911)	16.64 (1.55)	12.98 (1.21)	32.71 (3.04)
FWN5088	2 - AP/PA	27.30 (2.54)	52 1/2" (1327)	55 1/2" (1400)	75 1/2" (1911)	16.64 (1.55)	27.30 (2.54)	32.71 (3.04)
FWN5088	1 - AP/PA	13.32 (1.23)	25 1/2" (647)	26 1/2" (678)	75 1/2" (1911)	16.64 (1.55)	13.32 (1.23)	32.71 (3.04)
FWN5488	1 - AS/SA	14.02 (1.30)	26 1/2" (681)	28" (711)	75 1/2" (1911)	18.39 (1.71)	14.02 (1.30)	34.92 (3.24)
FWN5488	2 - AP/PA	29.30 (2.73)	56 1/2" (1429)	59 1/2" (1502)	75 1/2" (1911)	18.39 (1.71)	29.30 (2.73)	34.92 (3.24)
FWN5488	1 - AP/PA	14.37 (1.33)	27 1/2" (698)	28 1/2" (729)	75 1/2" (1911)	18.39 (1.71)	14.37 (1.33)	34.92 (3.24)
FWN6088	1 - AS/SA	16.11 (1.50)	30 1/2" (783)	32" (813)	75 1/2" (1911)	21.92 (2.04)	16.11 (1.50)	30.34 (3.06)
FWN6088	2 - AP/PA	33.58 (3.12)	64 1/2" (1682)	67 1/2" (1705)	75 1/2" (1911)	21.92 (2.04)	33.58 (3.12)	30.34 (3.06)
FWN6088	1 - AP/PA	16.46 (1.52)	31 1/2" (800)	32 1/2" (830)	75 1/2" (1911)	21.92 (2.04)	16.46 (1.52)	30.34 (3.06)
FWN6088	1	14.02 (1.30)	26 1/2" (681)	28" (711)	75 1/2" (1911)	27.60 (2.58)	14.02 (1.30)	52.52 (4.88)
FWN6088	1	16.11 (1.50)	30 1/2" (783)	32" (813)	75 1/2" (1911)	32.88 (3.06)	16.11 (1.50)	50.14 (5.40)
FWN216118	-	-	-	-	-	6.01 (0.56)	-	13.89 (1.29)
FWN27611	1	13.48 (1.25)	24 1/2" (630)	26" (660)	78 1/2" (1984)	8.69 (0.81)	13.48 (1.25)	17.21 (1.60)
FWN29611	1	14.55 (1.35)	26 1/2" (681)	28" (711)	78 1/2" (1984)	9.61 (0.90)	14.55 (1.35)	18.36 (1.71)
FWN31611	1	16.72 (1.55)	30 1/2" (783)	32" (813)	78 1/2" (1984)	11.45 (1.06)	16.72 (1.55)	20.64 (1.92)
FWN41611	2	22.24 (2.07)	41" (1099)	43 1/2" (1112)	78 1/2" (1984)	12.20 (1.13)	22.24 (2.07)	27.46 (2.55)
FWN41611	1	11.43 (1.06)	19 1/2" (505)	21 1/2" (555)	78 1/2" (1984)	12.20 (1.13)	11.43 (1.06)	27.46 (2.55)
FWN50611	1 - AS/SA	13.48 (1.25)	24 1/2" (630)	26" (660)	78 1/2" (1984)	17.38 (1.62)	13.48 (1.25)	33.89 (3.15)
FWN50611	2 - AP/PA	28.34 (2.63)	52 1/2" (1327)	55 1/2" (1400)	78 1/2" (1984)	17.38 (1.62)	28.34 (2.63)	33.89 (3.15)
FWN50611	1 - AP/PA	13.83 (1.28)	25 1/2" (647)	26 1/2" (678)	78 1/2" (1984)	17.38 (1.62)	13.83 (1.28)	33.89 (3.15)
FWN54611	1 - AS/SA	14.55 (1.35)	26 1/2" (681)	28" (711)	78 1/2" (1984)	19.22 (1.79)	14.55 (1.35)	36.18 (3.36)
FWN54611	2 - AP/PA	30.51 (2.83)	56 1/2" (1429)	59 1/2" (1502)	78 1/2" (1984)	19.22 (1.79)	30.51 (2.83)	36.18 (3.36)
FWN54611	1 - AP/PA	14.91 (1.58)	27 1/2" (698)	28 1/2" (729)	78 1/2" (1984)	19.22 (1.79)	14.91 (1.58)	36.18 (3.36)
FWN60611	1 - AS/SA	16.72 (1.55)	30 1/2" (783)	32" (813)	78 1/2" (1984)	22.91 (2.13)	16.72 (1.55)	40.76 (3.79)
FWN60611	2 - AP/PA	34.86 (3.24)	64 1/2" (1682)	67 1/2" (1705)	78 1/2" (1984)	22.91 (2.13)	34.86 (3.24)	40.76 (3.79)
FWN60611	1 - AP/PA	17.08 (1.68)	31 1/2" (800)	32 1/2" (830)	78 1/2" (1984)	22.91 (2.13)	17.08 (1.68)	40.76 (3.79)
FWN60611	1	14.55 (1.35)	26 1/2" (681)	28" (711)	78 1/2" (1984)	28.83 (2.68)	14.55 (1.35)	54.43 (5.06)
FWN60611	1	16.72 (1.55)	30 1/2" (783)	32" (813)	78 1/2" (1984)	34.96 (3.19)	16.72 (1.55)	61.30 (5.70)
FWN21906	-	-	-	-	-	7.19 (0.67)	-	16.08 (1.49)
FWN2780	1	15.73 (1.46)	24 1/2" (630)	26" (660)	91 1/2" (2318)	10.41 (0.97)	15.73 (1.46)	19.98 (1.86)
FWN2980	1	17.00 (1.58)	26 1/2" (681)	28" (711)	91 1/2" (2318)	11.52 (1.07)	17.00 (1.58)	21.31 (1.98)
FWN3180	1	19.54 (1.82)	30 1/2" (783)	32" (813)	91 1/2" (2318)	13.72 (1.28)	19.54 (1.82)	23.98 (2.23)
FWN4180	2	25.98 (2.41)	41" (1099)	43 1/2" (1112)	91 1/2" (2318)	14.62 (1.36)	25.98 (2.41)	31.83 (2.96)
FWN4180	1	13.35 (1.24)	19 1/2" (505)	21 1/2" (555)	91 1/2" (2318)	14.62 (1.36)	13.35 (1.24)	31.83 (2.96)
FWN5080	1 - AS/SA	15.73 (1.46)	24 1/2" (630)	26" (660)	91 1/2" (2318)	20.82 (1.93)	15.73 (1.46)	30.30 (3.05)
FWN5080	2 - AP/PA	33.11 (3.08)	52 1/2" (1327)	55 1/2" (1400)	91 1/2" (2318)	20.82 (1.93)	33.11 (3.08)	30.30 (3.05)
FWN5080	1 - AP/PA	16.15 (1.50)	25 1/2" (647)	26 1/2" (678)	91 1/2" (2318)	20.82 (1.93)	16.15 (1.50)	30.30 (3.05)
FWN5480	1 - AS/SA	17.00 (1.58)	26 1/2" (681)	28" (711)	91 1/2" (2318)	23.03 (2.14)	17.00 (1.58)	41.95 (3.90)
FWN5480	2 - AP/PA	35.64 (3.31)	56 1/2" (1429)	59 1/2" (1502)	91 1/2" (2318)	23.03 (2.14)	35.64 (3.31)	41.95 (3.90)
FWN5480	1 - AP/PA	17.42 (1.61)	27 1/2" (698)	28 1/2" (729)	91 1/2" (2318)	23.03 (2.14)	17.42 (1.61)	41.95 (3.90)
FWN6080	1 - AS/SA	19.54 (1.82)	30 1/2" (783)	32" (813)	91 1/2" (2318)	27.44 (2.55)	19.54 (1.82)	47.25 (4.39)
FWN6080	2 - AP/PA	40.71 (3.78)	64 1/2" (1682)	67 1/2" (1705)	91 1/2" (2318)	27.44 (2.55)	40.71 (3.78)	47.25 (4.39)
FWN6080	1 - AP/PA	19.96 (1.85)	31 1/2" (800)	32 1/2" (830)	91 1/2" (2318)	27.44 (2.55)	19.96 (1.85)	47.25 (4.39)
FWN6080	1	17.00 (1.58)	26 1/2" (681)	28" (711)	91 1/2" (2318)	34.55 (3.21)	17.00 (1.58)	63.09 (5.86)
FWN6080	1	19.54 (1.82)	30 1/2" (783)	32" (813)	91 1/2" (2318)	41.16 (3.82)	19.54 (1.82)	71.05 (6.60)

\* Dimensions in parentheses are in millimeters or square meters.  
 \*For two-panel active-passive or passive-active patio doors with one panel open, clear opening is based on active panel open and passive panel closed.



400 SERIES

Custom Sizes and Specification Formulas



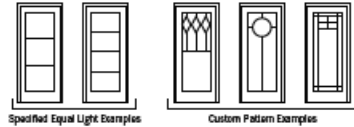
<p><b>Clear Opening</b></p> <p>Height = height - 4.22" (107)</p> <p>Single-Panel Width = width - 5.744" (145)</p> <p>Two-Panel, two panels open Width = width - 7.394" (187)</p> <p>Two-Panel, one panel open Width = (width - 10.550" (267)) + 2</p> <p>Three-Panel Width = (width - 16.106" (409)) + 3</p>	<p><b>Minimum R.O.</b></p> <p>Width = width + 3/4" (19)</p> <p>Height = height + 1/2" (13)</p>	<p><b>Unobst. Glass</b></p> <p>Single-Panel Width = width - 11.22" (285)</p> <p>Two-Panel Width = width - 21.5" (548)</p> <p>Three-Panel Width = width - 32.55" (827)</p> <p>Height = height - 16.05" (408)</p>
--	--	---

\* Clear opening formulas provide dimensions for determining area available for a glass, vent opening, or area available for passage of air; is equal to clear opening. Minimum R.O. (minimum rough opening) formulas provide minimum rough opening width and height dimensions. Unobst. Glass (unobstructed glass) formulas provide dimensions for determining area available for passage of light.  
\* Clear opening width formulas are based on panels(s) in a 90° open position.  
\* Dimensions in parentheses are in millimeters.

Available in 1/8" (3) increments between minimum and maximum widths and heights. Some restrictions apply; contact your Andersen supplier. Measurement guide can be found at [andersenwindows.com/measure](http://andersenwindows.com/measure).

Grille Patterns

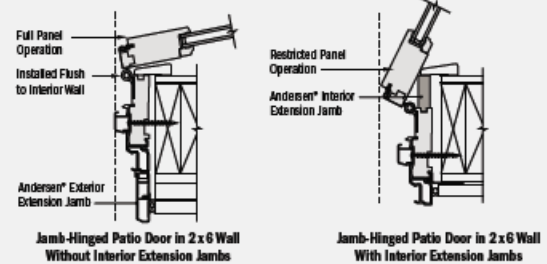
	Prairie A	Colonial	Modified Colonial	Modified Colonial with Simulated Meeting Rail	Tall Fractional	Tall Fractional with Simulated Meeting Rail	Short Fractional	Short Fractional with Simulated Meeting Rail
Frenchwood® Gliding and Hinged Inswing Patio Doors								



Number of lights and overall pattern varies with panel size. Patterns may not be available in all configurations. Specified equal light and custom patterns are also available. For more grille options, see page 18 or visit [andersenwindows.com/grilles](http://andersenwindows.com/grilles).

Interior Extension Jamb

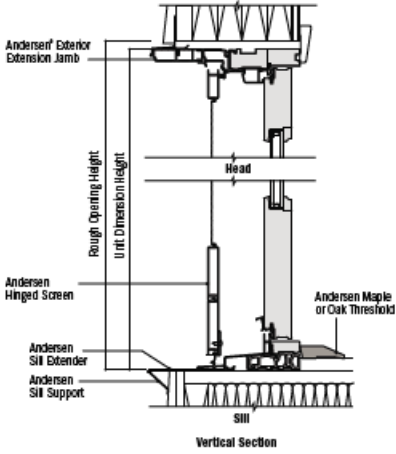
Use of interior extension jambs or drywall return will restrict panel operation on jamb-hinged patio doors. Jamb-hinged patio doors must be installed flush to the interior to achieve full panel operation.



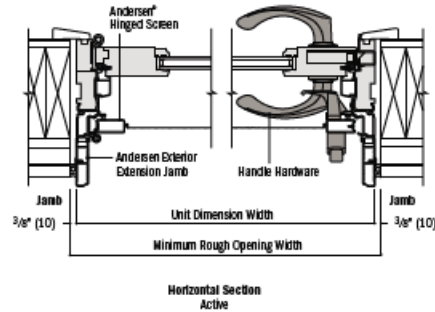
400 Series Frenchwood® Hinged Inswing Patio Doors

## FRENCHWOOD® HINGED INSWING PATIO DOORS

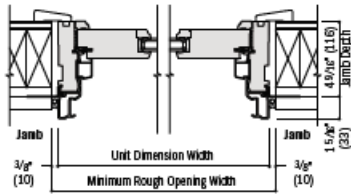
Details for Frenchwood® Hinged Inswing Patio Doors  
 Scale 1 1/2" (38) = 1'-0" (305) - 1:8



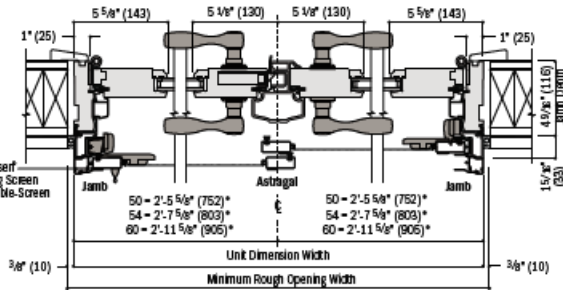
Vertical Section



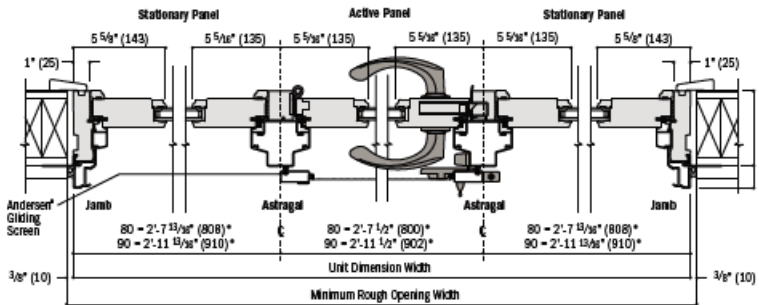
Horizontal Section Active



Horizontal Section Stationary



Horizontal Section Two-Panel



Horizontal Section Three-Panel

\*4 1/2" (116) overall jamb depth measurement is from back side of installation flange.  
 \*Light-colored areas are parts included with door. Dark-colored areas are additional Andersen® parts required to complete door assembly as shown.  
 \*Minimum rough openings may need to be increased to allow for use of holding wraps, flashing, sill panelling, brackets, fasteners or other items. See installation information on pages 222-223.  
 \*Details are for illustration only and are not intended to represent product installation methods or materials. Refer to product installation guides at [andersenwindows.com](http://andersenwindows.com).  
 \*Dimensions in parentheses are in millimeters.  
 \*Dimension indicates location of astragal centerline.

## Sapele Mahogany

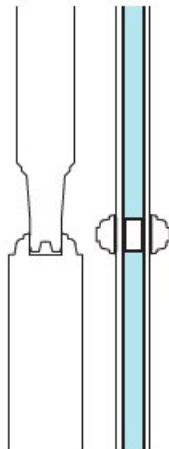
SASH DOORS 7/8" SDL BAR & 1-7/16" DOUBLE HIP RAISED PANEL



Nantucket® Standard Joinery 7/8" SDL Bar & 1-7/16" Double Hip Raised Panel with Low-E Glass



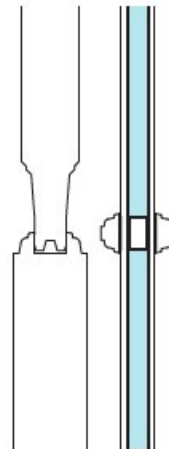
Nantucket® Standard Joinery  
Door Corner



Panel  
Profile  
Glass  
Profile



Nantucket® Optional Joinery  
Door Corner



Panel  
Profile  
Glass  
Profile

**NANTUCKET® BEST DURABILITY**

STANDARD JOINERY



**SM77506**  
Low-E  
7/8" SDL Bar  
1-7/16" Double Hip  
Raised Panel  
Ovolo Sticking  
Wide Layout  
30 x 68



**SM77803**  
Low-E  
7/8" SDL Bar  
1-7/16" Double Hip  
Raised Panel  
Ovolo Sticking  
12 x 68



**SM77944**  
Low-E  
7/8" SDL Bar  
1-7/16" Double Hip  
Raised Panel  
Ovolo Sticking  
Wide Layout  
30 x 68



**SM77703**  
Low-E  
7/8" SDL Bar  
1-7/16" Double Hip  
Raised Panel  
Ovolo Sticking  
12 x 68



**SM77662**  
Low-E  
7/8" SDL Bar  
1-7/16" Double Hip  
Raised Panel  
Ovolo Sticking  
Wide Layout  
30 x 68



**SM77663**  
Low-E  
7/8" SDL Bar  
1-7/16" Double Hip  
Raised Panel  
Ovolo Sticking  
12 x 68

**NANTUCKET® BEST DURABILITY**

OPTIONAL JOINERY



**SM77504G**  
Low-E  
7/8" SDL Bar  
1-7/16" Double Hip  
Raised Panel  
Ovolo Sticking  
Wide Layout  
30 x 68 30 X 70  
36 X 68 36 X 70



**SM77802G**  
Low-E  
7/8" SDL Bar  
1-7/16" Double Hip  
Raised Panel  
Ovolo Sticking  
Wide Layout  
12 x 68 12 X 70



**SM77506G**  
Low-E  
7/8" SDL Bar  
1-7/16" Double Hip  
Raised Panel  
Ovolo Sticking  
Wide Layout  
30 x 68 30 X 70  
36 X 68 36 X 70



**SM77803G**  
Low-E  
7/8" SDL Bar  
1-7/16" Double Hip  
Raised Panel  
Ovolo Sticking  
Wide Layout  
12 x 68 12 X 70

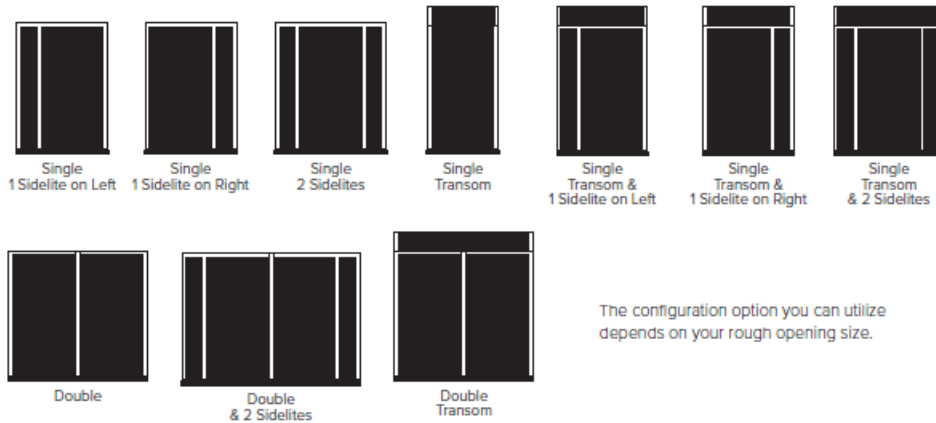


**SM77664G**  
Low-E  
7/8" SDL Bar  
1-7/16" Double Hip  
Raised Panel  
Ovolo Sticking  
Wide Layout  
30 x 68 30 X 70  
36 X 68 36 X 70



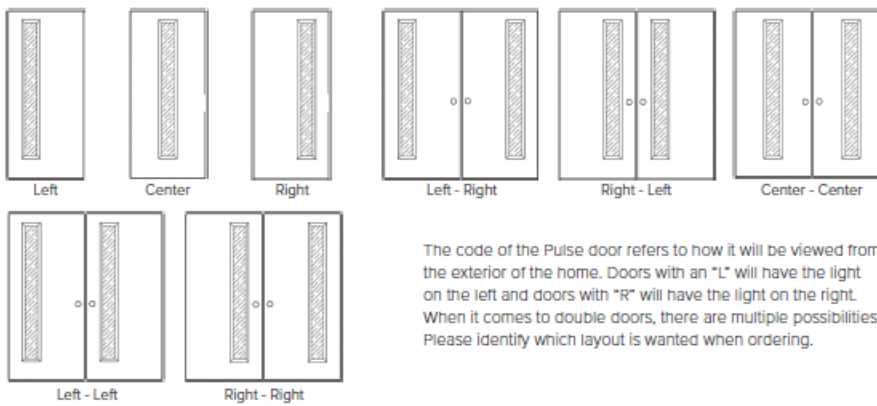
**SM77663G**  
Low-E  
7/8" SDL Bar  
1-7/16" Double Hip  
Raised Panel  
Ovolo Sticking  
Wide Layout  
12 x 68 12 X 70





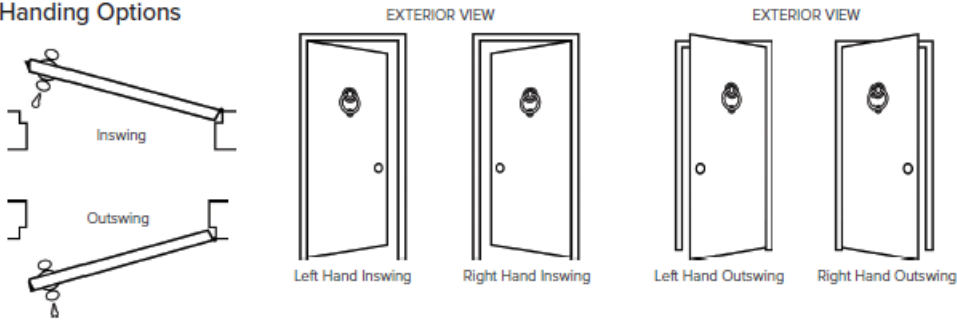
The configuration option you can utilize depends on your rough opening size.

### Pulse<sub>®</sub> Unit Configurations



The code of the Pulse door refers to how it will be viewed from the exterior of the home. Doors with an "L" will have the light on the left and doors with "R" will have the light on the right. When it comes to double doors, there are multiple possibilities. Please identify which layout is wanted when ordering.

### Handing Options



## Anatomy of an Exterior Door

Purchasing a door unit can be an overwhelming process given the many options available. However, reviewing the information in The Anatomy of an Exterior Door Unit will help in the understanding of which components make up a door unit and how each one is necessary in the life span of a door.





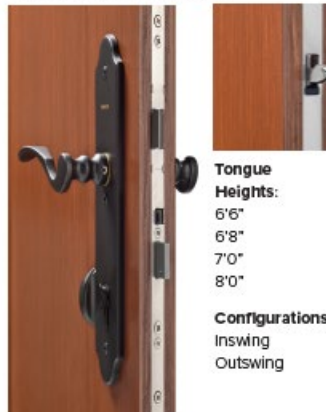
- ① Self-lubricating locks.
- ② 1" premium stainless steel deadbolt.
- ③ Integrated mishandling device.

### Lever-Style MPLS

Lever-style handlesets bring form and function together with decorative styles. A convenient upward turn of the handle is required before all three points will engage. An integrated mishandling device helps protect the door and frame from accidental damage. Features deadbolt below the handleset.

(Highly recommended for 8'0" and double fiberglass doors. Not recommended for steel doors. Strike plate packages available to meet the installation needs of various MPLS applications.)

### Standard Door MPLS



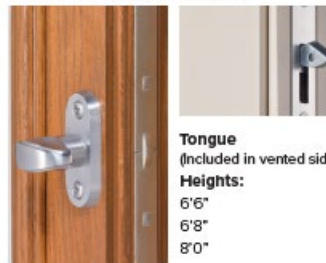
**Tongue Heights:**  
 6'6"  
 6'8"  
 7'0"  
 8'0"

**Configurations:**  
 Inswing  
 Outswing

**Shootbolt**  
 (For door systems with an astragal.)  
**Heights:** 6'6", 6'8", 7'0", 8'0"  
**Configurations:** Inswing, Outswing



### Vented Sidelite MPLS

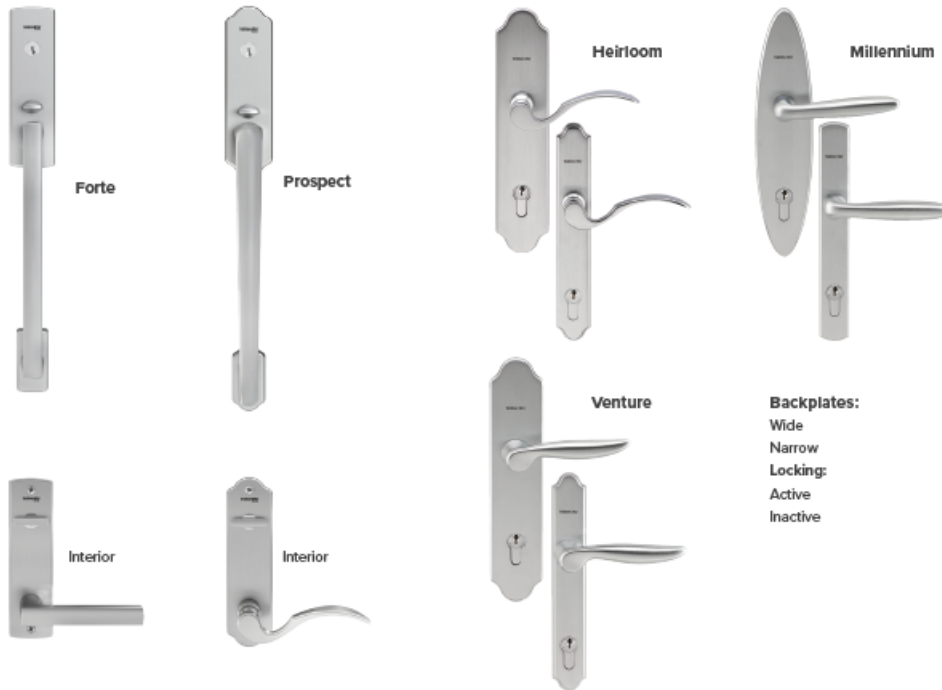


**Tongue**  
 (Included in vented sidelite units.)  
**Heights:**  
 6'6"  
 6'8"  
 8'0"

## Hardware

### Handleset Options for Standard Door MPLS

Designed to complement Thermo-Tru door styles from traditional to contemporary.










### Finish Options for Handlesets & Hinges

\*Not available for Forte and Prospect handlesets.



## Hinges & Strike Plate

HINGES							
■ = Available	Adjustable	Classic-Craft Ball-Bearing	Self-Aligning Ball-Bearing	Self-Aligning	Self-Aligning NRP (Non-Removable Pin)	Spring-Loaded	Adjustable Security Strike Plate (For Latch & Deadbolt)
<b>Hinge Finish Options</b>							
Bright Brass	■	■	■				
Brushed Nickel	■	■	■	■	■	■	■
Black Nickel	■	■	■		■	■	■
Polished Chrome		■	■		■	■	■
Oil-Rubbed Bronze	■	■	■	■	■	■	■
Stainless Steel		■	■	■	■	■	■
Zinc Dichromate		■	■	■	■	■	■

Hinges position the door to properly compress the weatherstrip and help ensure smooth operation. Features options to suit various applications and mate with mortise pockets machined into our doors. Adjustable security strike plate wraps around the jamb and engages the frame for added support and strength, and resistance against forced entry.

## Additional Accessories



Kickplate



Mailslot



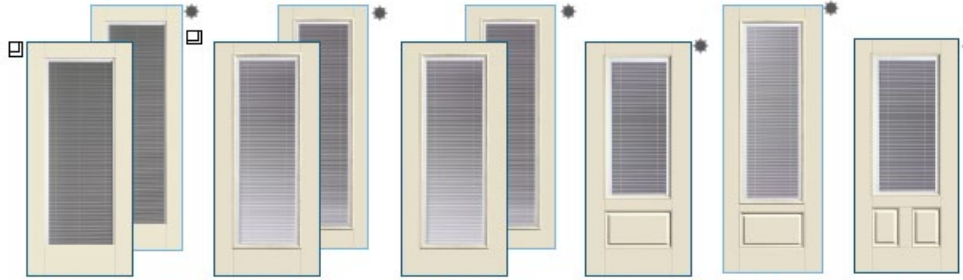
Door Viewer

Internal Blinds:

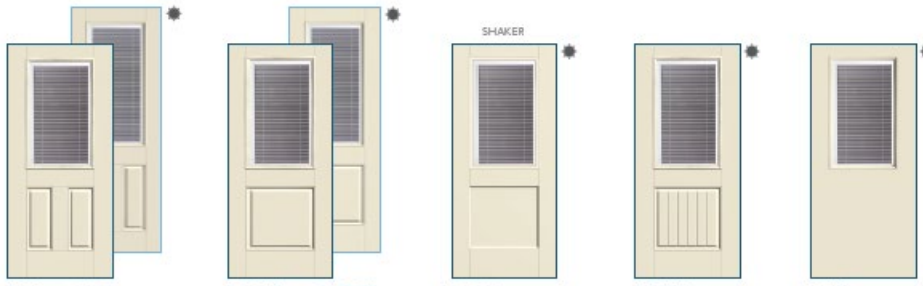
**Internal Blinds**

Note: Product images show the exterior side of the door.

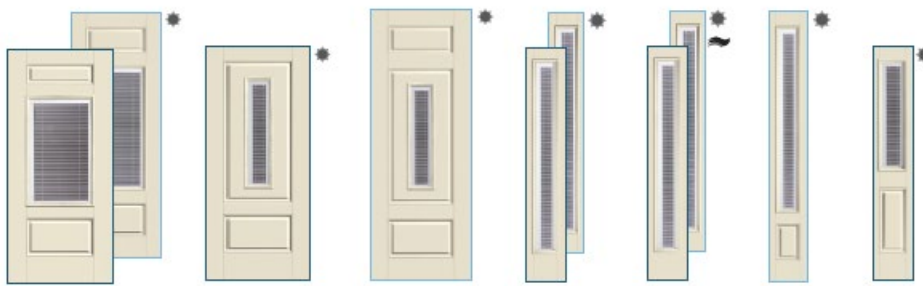
Smooth-Star®



<b>S2600</b>	<b>S82600</b>	<b>S130</b>	<b>S829</b>	<b>S6061*</b>	<b>S81225*</b>	<b>S682</b>	<b>S8682</b>	<b>S5425</b>
2/6   6/8   8/0	2/8   6/8   8/0	2/6N   6/8	2/8   7/0   8/0	2/4   6/8*	2/6   6/8*	2/8   6/8	2/8   8/0	2/8   6/8
2/8   6/8   8/0	2/10   6/8   8/0	2/8   6/8	2/8N   6/8	2/6   6/8*	3/6   6/8*	3/0   6/8	3/0   8/0	2/10   6/8
2/10   6/8   8/0	3/0   6/8   8/0	2/10   6/8	7/0   8/0	3/6   6/8*	8/0*			3/0   6/8
3/0   6/8   8/0		3/0   6/8	7/0   8/0					



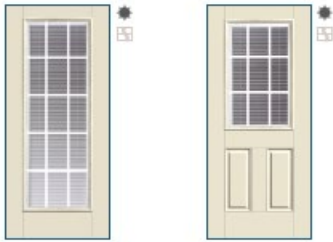
<b>S132</b>	<b>S8132</b>	<b>S6035</b>	<b>S86035</b>	<b>S4308</b>	<b>S6055</b>	<b>S131*</b>
2/6N   6/8	2/8   6/8	2/8   6/8	7/0   8/0	2/8   6/8	2/8   6/8	2/6   6/8
2/8   6/8	7/0   8/0	2/10   6/8	7/0   8/0	2/10   6/8	3/0   6/8	2/8   6/8
2/10   6/8	7/0   8/0	3/0   6/8	7/0   8/0	3/0   6/8		2/10   6/8
3/0   6/8	7/0   8/0					3/0   6/8



<b>S971</b>	<b>S8971</b>	<b>S925</b>	<b>S8972</b>	<b>S130SL</b>	<b>S6128SL*</b>	<b>S8682SL</b>	<b>S132SL</b>
2/8   6/8	2/8   6/8	2/8   6/8	2/8   8/0	12"   6/8	10"   6/8	12"   8/0	12"   6/8
3/0   6/8	8/0	3/0   6/8	3/0   8/0	14"   6/8	12"   6/8	14"   8/0	14"   6/8
				14"   6/8	12"   6/8	14"   8/0	
				14"   6/8	14"   6/8	14"   8/0	
					14"   6/8	14"   8/0	

## Internal Blinds

Reeb® Specialty Products



**RSS130RT**  
 2/8 | 6/8 | 7/0  
 2/10 | 6/8 | 7/0  
 3/0 | 6/8 | 7/0

**RSS132RT**  
 2/8 | 6/8 | 7/0  
 2/10 | 6/8 | 7/0  
 3/0 | 6/8 | 7/0

Note: Product images show exterior side of the door.

\*Between-the-glass blinds are a perfect choice for people who value energy savings and quiet. Grilles between the glass add a warm aesthetic. The blind slats disappear behind the valance when they are fully raised for a clean, finished look. Blinds tilt, and raise and lower the entire length of the door glass.



☀ Low-E Glass (LE)

☒ Contour White (CW) GBG

☐ Flush-Glazed (FG)

\* This door style is made from a flush door and will not have stile lines.

☂ Vented Sidelite

**REEB**  
 SPECIALTY PRODUCTS

201

12/28/25, 1:48 PM

m2o Quote Form

**Quote Form**



TW PERRY - LEESBURG  
 41 CATOCTIN CIRCLE  
 LEESBURG VA 20176  
 703-777-3030



**Project Information (ID #9893642 Revision #14364501)** [Hide](#)

<b>Project Name:</b> A TO Z HOME NATALIE PREFINISHED DOORS	<b>Quote Date:</b> 12/26/2025
<b>Customer:</b>	<b>Submitted Date:</b>
<b>Contact Name:</b>	<b>PO#:</b> QQ000
<b>Phone (Main):</b>	<b>Sales Rep Name:</b> Jonathan Perez-cruz
<b>Phone (Cell):</b>	<b>Salesperson:</b>
<b>Customer Type:</b>	
<b>Terms:</b>	

**Delivery Information** [Hide](#)

<b>Shipping Contact:</b>	<b>Comments:</b>
<b>Shipping Address:</b>	
<b>City:</b>	
<b>State:</b>	
<b>Zip:</b>	

**Unit Detail** [Hide All Configuration Options](#)

Item: 0001: Ext 36" x 80" S2600-LE LHO 6 9/16" On-Guard Primed	Location:	Quantity: 1
Smooth Star 36"x80" Single Door		1,999.73



Exterior View



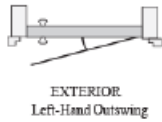
Interior View

**Configuration Options** [Hide](#)

- **Product Category:** Exterior Doors
- **Manufacturer:** Reeb - Smooth Star
- **Product Material:** Smooth Star Fiberglass
- **Material Type:** Smooth Star
- **Product Type:** Entry
- **Brand:** Therma-Tru
- **Configuration (Units viewed from Exterior):** Single Door
- **Reeb Finish:** Yes
- **Slab Width:** 36"
- **Slab Height:** 80"
- **Product Style:** Full Lite

12/26/25, 1:48 PM

m2o Quote Form



[Generate NFRC Label](#)

- Glass Type: Clear
- Glass Style: Blinds
- Glazing Type: Flush Glazed
- Insulation: Low E
- Grille Type: None
- Model: S2600-LE
- Finish Door Exterior Color: PrismaGuard Paint By Therma Tru
- Exterior Door Color: Cabernet / Dahlia
- Finish Door Interior Color: PrismaGuard Paint By Therma Tru
- Interior Door Color: Cabernet / Dahlia
- Frame Material: On-Guard Primed
- Include Matching Cortex Hidden Screw System: No
- Finish Frame Exterior Color: Unfinished
- Finish Frame Interior Color: Unfinished
- Handing: Left Hand Outswing
- Casing/Brickmould Pattern: None
- Hinge Type: NRP
- Hinge Brand: Therma-Tru
- Hinge Finish: Oil Rubbed Bronze
- Jamb Depth: 6 9/16"
- Sill: Composite Outswing
- Sill Finish: Bronze Finish w Dark Cap
- Lock Option: None
- Bore: Double Lock Bore 2-3/8" Backset
- Strike Jamb Prep: Schlage/Baldwin Standard Prep
- Weatherstrip Type: Compression
- Weatherstrip Color: Bronze
- Custom Height Option: No
- Kick Plate: None
- Sill Cover: No
- Sill Pan: No
- Rough Opening Width: 38 1/2"
- Rough Opening Height: 81 5/8"
- Total Unit Width(Includes Exterior Casing): 37 5/8"
- Total Unit Height(Includes Exterior Casing): 81 1/8"
- Energy Star Zone: Not Qualified
- CPD: THC-M-5-04304-00001
- U-Factor: 0.33
- Solar Heat Gain Coefficient: 0.26
- Visible Transmittance: 0.26
- Air Leakage: 0.3

Item Total: \$ 1,999.73  
Item Quantity Total: \$ 1,999.73

Item: 0003: Ext 36" x 80" SM77504G RHO 6 9/16" On-Guard Primed	Location:	Quantity: 1
--	-----------	-------------

12/26/25, 1:46 PM

m2o Quote Form



Exterior View

Sapele Mahogany 36"x80" Single Door

3,191.09



EXTERIOR  
Right-Hand Outswing

Configuration Options [Hide](#)

- **Product Category:** Exterior Doors
- **Manufacturer:** Reeb - Wood Exterior
- **Product Type:** Exterior
- **Region:** East
- **Product Material:** Nantucket Series Wood Grip Tenon - No Pins
- **Material Type:** Sapele Mahogany
- **Configuration (Units viewed from Exterior):** Single Door
- **Factory Finish Option:** No
- **Slab Width:** 36"
- **Slab Height:** 80"
- **Product Style:** 3/4 Lite
- **Glass Type:** Clear
- **Panel Type:** 1-7/16" Double Hip Raised
- **Grille Type:** 7/8" SDL
- **Insulation:** Low E
- **Model:** SM77504G
- **Sticking:** Ovolo
- **Handing:** Right Hand Outswing
- **Frame Material:** On-Guard Primed
- **Jamb Depth:** 6 9/16"
- **Casing/Brickmould Pattern:** None
- **Hinge Type:** NRP
- **Hinge Brand:** Reeb
- **Hinge Finish:** US1D Flat Black
- **Sill:** Composite Outswing
- **Sill Finish:** Bronze Finish w Dark Cap
- **Lock Option:** None
- **Bore:** Double Lock Bore 2-3/8" Backset
- **Strike Jamb Prep:** Schlage/Baldwin Standard Prep
- **Weatherstrip Type:** Compression
- **Weatherstrip Color:** Bronze
- **Kick Plate:** None
- **Mail Slot:** None
- **Finish Frame Exterior Color:** Unfinished
- **Finish Frame Interior Color:** Unfinished
- **Rough Opening Width:** 38 1/2"
- **Rough Opening Height:** 81 5/8"
- **Total Unit Width(Includes Exterior Casing):** 37 5/8"
- **Total Unit Height(Includes Exterior Casing):** 81 1/8"

Unfinished Door Option:

**Quote Form**



TW PERRY - LEESBURG  
 41 CATOCTIN CIRCLE  
 LEESBURG VA 20176  
 703-777-3030



**Project Information** (ID #9908294 Revision #14378594) [Hide](#)

<b>Project Name:</b> A TO Z HOME NATALIE UNFINISHED DOORS	<b>Quote Date:</b> 12/26/2025
<b>Customer:</b>	<b>Submitted Date:</b>
<b>Contact Name:</b>	<b>PO#:</b>
<b>Phone (Main):</b>	<b>Sales Rep Name:</b> Mark Timberlake
<b>Phone (Cell):</b>	<b>Salesperson:</b>
<b>Customer Type:</b>	
<b>Terms:</b>	

**Delivery Information** [Hide](#)

<b>Shipping Contact:</b>	<b>Comments:</b>
<b>Shipping Address:</b>	
<b>City:</b>	
<b>State:</b>	
<b>Zip:</b>	

**Unit Detail** [Hide All Configuration Options](#)

<b>Item:</b> 0001: Ext 36" x 80" S2600-LE LHO 6 9/16" On-Guard Primed	<b>Location:</b>	<b>Quantity:</b> 1
Smooth Star 36"x80" Single Door		1,491.12



Exterior View



Interior View

**Configuration Options** [Hide](#)

- **Product Category:** Exterior Doors
- **Manufacturer:** Reeb - Smooth Star
- **Product Material:** Smooth Star Fiberglass
- **Material Type:** Smooth Star
- **Product Type:** Entry
- **Brand:** Therma-Tru
- **Configuration (Units viewed from Exterior):** Single Door
- **Reeb Finish:** No
- **Slab Width:** 36"
- **Slab Height:** 80"
- **Product Style:** Full Lite

Window Quote:



**SOLD BY:**  
TW Perry - BMC Gaithersburg  
8131 Snouffer School Rd  
Gaithersburg, MD 20879-1505  
Fax: 240-403-2235

**SOLD TO:**

CREATED DATE  
12/16/2025

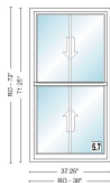
LATEST UPDATE  
12/26/2025

OWNER  
Jonathan Perez-cruz

**Abbreviated Quote Report - Customer Pricing**

QUOTE NAME	PROJECT NAME	QUOTE NUMBER	CUSTOMER PO#	TRADE ID
A TO Z HOME. NATALIE A SER WINDOWS	A TO Z HOME NATALIE A SER WINDOWS	8586655		217060

ORDER NOTES: DELIVERY NOTES:



Item	Qty	Operation	Location	Unit Price	Ext. Price
100	4	AA	A SERIES WINDOWS	\$1,473.14	\$5,892.56

RO Size = 38" x 72"

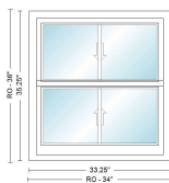
Unit Size = 37 1/4" x 71 1/4"

ADH3260, Unit, 8 Degrees - Moderate, A Series Double-Hung, Traditional (4 1/8" Bottom Rail), Standard Product Performance, Equal Sash, 4 9/16" Frame Depth, Standard Flange, White Exterior Frame, White Exterior Sash/Panel, Pine w/White - Painted Interior Frame, Pine w/White - Painted Interior Sash/Panel, AA, Dual Pane Low-E4 Standard Argon Fill Full Divided Light (FDL) 2 Wide, 1 High, Specified Equal Light Pattern, White, Pine w/White, Chamfer Exterior Grille Bar/ Chamfer Interior Grille Bar, 3/4" Grille Bar, Chamfer Glass Stop Stainless Glass / Grille Spacer, Bar Lift, Traditional, Black, Traditional, 1 Sash Locks Black, White, Half Screen, TruScene  
Wrapping: 6 9/16" Interior Extension Jamb Pine / Primed Standard Complete Unit Extension Jambs, Factory Applied

Sash Lift: ADH Bar Lift Traditional Black PN:9159469

Insect Screen 1: A Series Double-Hung, ADH3260 8 Degrees - Moderate Half Screen TruScene White

Unit #	U-Factor	SHGC	ENERGY STAR	Clear Opening/Unit #	Width	Height	Area (Sq. Ft)
A1	0.3	0.27	NO	A1	33.1875	31.0000	7.14000



Item	Qty	Operation	Location	Unit Price	Ext. Price
200	1	AA	A SERIES WINDOWS	\$1,069.13	\$1,069.13

RO Size = 34" x 36"

Unit Size = 33 1/4" x 35 1/4"

ADH21030, Unit, 8 Degrees - Moderate, A Series Double-Hung, Traditional (4 1/8" Bottom Rail), Standard Product Performance, Equal Sash, 4 9/16" Frame Depth, Standard Flange, White Exterior Frame, White Exterior Sash/Panel, Pine w/White - Painted Interior Frame, Pine w/White - Painted Interior Sash/Panel, AA, Dual Pane Low-E4 Standard Argon Fill Full Divided Light (FDL) 2 Wide, 1 High, Specified Equal Light Pattern, White, Pine w/White, Chamfer Exterior Grille Bar/ Chamfer Interior Grille Bar, 3/4" Grille Bar, Chamfer Glass Stop Stainless Glass / Grille Spacer, Bar Lift, Traditional, Black, Traditional, 1 Sash Locks Black, White, Half Screen, TruScene  
Wrapping: 6 9/16" Interior Extension Jamb Pine / Primed Standard Complete Unit Extension Jambs, Factory Applied

Sash Lift: ADH Bar Lift Traditional Black PN:9159469

Insect Screen 1: A Series Double-Hung, ADH21030 8 Degrees - Moderate Half Screen TruScene White

Unit #	U-Factor	SHGC	ENERGY STAR	Clear Opening/Unit #	Width	Height	Area (Sq. Ft)
A1	0.3	0.27	NO	A1	29.1875	13.0000	2.63000

SUB-TOTAL:	\$6,961.69
FREIGHT:	\$0.00
LABOR:	\$0.00
TAX:	\$417.70
TOTAL:	\$7,379.39