

**Walton County
The Grove**

**Change Proposal #27 – Building
J Exterior OH Storage Doors
Change**

General Contractor:

**Reeves Young
45 Peachtree Industrial Boulevard N.W.
Sugar Hill, GA 30518
770-271-1159**



February 18, 2025

Walton County, GA
The Grove, a Walton County Parks &
Recreation Facility

Attn: John Ward, County Manager
Jeff Prine, Capital Project Manager –
Ascension Program Management

Change Proposal #27 – Building J Exterior OH Storage Doors Change

The following change proposal below is for the revisions made per RFI 141 to replace the Steel Sectional Doors at storage rooms J04, J05, and J06 in Building J due to a conflict with the locking mechanism.

The originally submitted and approved overhead roll-up doors for these storage rooms were provided by the subcontractor in accordance with the project specification 08 33 23-3 which calls for the steel sectional doors to be Model 420 by Overhead Door Co., with an interior mounted padlock/slide lock system (basis of design). However, this created an onsite issue, as there is no way to lock or unlock the doors from either the interior or exterior due to no internal access to the storage rooms. The most feasible and cost-effective solution is to replace the existing roll-up doors with new 8x8 coiling sheet doors, featuring manual operation and exterior locks. Supporting documentation is provided below.

Description	Qty	Unit	Unit Price	Total
Top Notch Proposal – 8x8 Coiling Sheets Doors (Material)	1	LS	\$4,206.81	\$4,206.81
Total Material Cost	1	LS		\$4,206.81
Payment & Performance Bond	0.597	%	\$25.11	\$25.11
General Liability Insurance	0.811%	%	\$34.12	\$34.12
Builders Risk Insurance	0.174%	%	\$7.32	\$7.32
RY Overhead and Profit	10	%	\$420.68	\$420.68
TOTAL				\$4,694.04

If you have any questions or require any additional information, please do not hesitate to contact us at (470) 725-0022 or via email at jarnold@reevesyoung.com

Sincerely,
Reeves Young, LLC


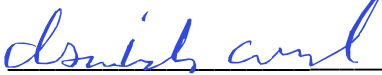
Isaiah Arnold



Project Manager

45 Peachtree Industrial Blvd, Suite 200 770.271.1159
Sugar Hill, GA 30518 reevesyoung.com

Approval

Lose Design (Architect of Record)	Signature: 	Date: <u>2/20/2025</u>
Ascension PM (Capital Project Manager)	Signature: Thomas J. Prine	Date: 02.20.2025
Walton County	Signature: _____	Date: _____
Reeves Young	Signature: 	Date: <u>02/19/25</u>



Top Notch Dock and Door
 3743 Old Flowery Branch Rd
 Oakwood, GA 30566
 (770) 561-1369

BILL TO

Reeves Young
 45 Peachtree Industrial Boulevard
 Sugar Hill, GA 30518 USA

ESTIMATE 71207760	ESTIMATE DATE Jan 29, 2025
-----------------------------	--------------------------------------

JOB ADDRESS

Walton County The Grove
 1089 Highway 81
 Loganville, GA 30052 USA

Job:

Materials

MATERIAL	DESCRIPTION	QUANTITY	YOUR PRICE	YOUR TOTAL
Material - Other	New 8x8 coiling sheet door, manual operation, exterior lock, with handles on both sides of bottom bar	3.00	\$1,402.27	\$4,206.81

POTENTIAL SAVINGS	\$0.00
SUB-TOTAL	\$4,206.81
TAX	\$0.00
TOTAL	\$4,206.81

Thank you for choosing Top Notch Dock and Door

CUSTOMER AUTHORIZATION

THIS IS AN ESTIMATE, NOT A CONTRACT FOR SERVICES. The summary above is furnished by Top Notch Dock and Door, LLC as a good faith estimate of work to be performed at the location described above and is based on our evaluation and does not include material price increases or additional labor and materials which may be required should unforeseen problems arise after the work has started. I understand that the final cost of the work may differ from the estimate, perhaps materially. THIS IS NOT A GUARANTEE OF THE FINAL PRICE OF WORK TO BE PERFORMED. I agree and authorize the work as summarized on these estimated terms, and I agree to pay the full amount for all work performed.

Sign here

Date

24104 - Walton County The Grove (24104-)

1089 Highway 81
Loganville, GA 30052

141 - Building J - Steel Sectional Doors J04, J05, & J06 Lock Conflict

Subject		Status
Building J - Steel Sectional Doors J04, J05, & J06 Lock Conflict		Closed ●
Discipline	Importance	Location
Architectural	High	Building J - Maintenance Facility
Created On	Due Date	Date Resolved
12/10/2024	12/17/2024	
Author		Resolved By
Jose Valerio Reeves Young, LLC		

QUESTION Jose Valerio on 12/10/2024 06:30 PM (Edited by Jose Valerio on 12/10/2024 06:32 PM)

Design Professional,

There is a conflict with the locking mechanism/hardware for the steel sectional doors J04, J05, & J06 at Building J. The door schedule on sheet A8.01J calls for the hardware set on these doors to be "MFG. Provided". When referred to the specifications 08 33 23-3 the lock specified is "Exterior keyed lock with Schlage Everest D cylinder as per specification Division 08 Section Door Hardware." But on the door hardware specification 087100 - 23, the lock hardware called out for doors J04, J05, & J06 is "Balance of hardware by coiling door manufacture. Provide Padlock/Cylinder and Core only if required.

Well in the submittal package (083323-05-02) for the steel overhead and sectional doors, only padlock hardware was provided for these doors including doors J04, J05, & J06. This creates a conflict, as there is no way to lock or unlock these sectional doors from either the interior or exterior of the building since there is no internal access to the storage rooms. When looking back at the specification 80 33 23-3, the basis of design steel sectional door is a Sectional Steel Door Model 420 by Overhead Door Co. The lock system for that door is also a Interior mounted padlock/slide lock.

Reeves has requested solutions from the overhead door contractor, and the following options have been proposed:

- 1) Equip these doors with electric operators and exterior key switch control stations so that they can be operated on either side of the door by button controls station.
- 2) Swap these rolling steel doors out with a coiling sheet door with external lock kit that can be engaged from the outside of the door. This option would have the door as manual/hand operation only.

Both options involve cost impacts.

Please clarify what the design intent was with the locking mechanism for the steel sectional doors at the storage rooms and let us know how to proceed. See the attached documents for reference.

141 - Building J - Steel Sectional Doors J04, J05, & J06 Lock Conflict



File
Document1.pdf
Jose Valerio

COMMENT Jose Valerio on 1/29/2025 04:10 PM

Design Professional,

After further review and discussions with the roll-up door subcontractor, option #2 has been identified as the most cost-effective and practical solution. This option involves replacing the existing doors with coiling sheet doors featuring manual operation and exterior locks. Please refer to the attached for additional details.

Let us know if you approve this approach and wish to proceed.

Thank you.



File
Model 1950.pdf
Jose Valerio

COMMENT chris fletcher on 2/4/2025 11:51 AM

This approach is approved by Lose. Please provide color sample for approval.

ADDED LINKS Jose Valerio on 2/5/2025 11:19 AM



Drawing
A2.01J
Jose Valerio

ASSIGNMENTS

- Aaron St Pierre (Lose Design) **Due On 12/17/2024**
- Barbara Canuto (Lose Design) **Due On 12/17/2024**
- Macon Chapman (Lose Design) **Due On 12/17/2024**



GEORGIA

THE GROVE
BUILDING "J" - MAINTENANCE FACILITY
1089 HWY 81, LOGANVILLE, GA 30052
PREPARED FOR:
WALTON COUNTY

LOGANVILLE

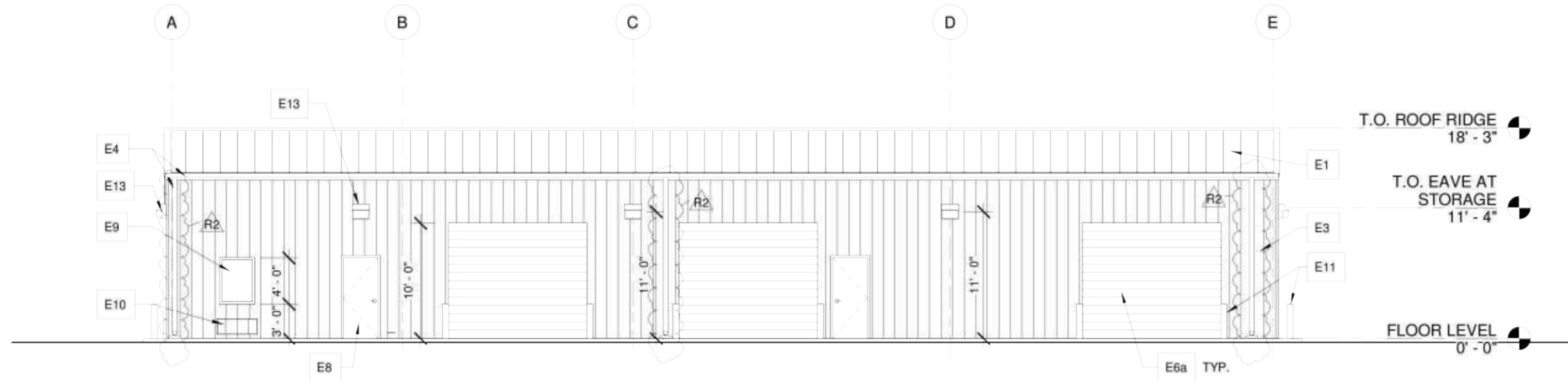
SUBMITTALS / REVISIONS		
NO.	DATE	DESCRIPTION
A3	04/21/2023	Addendum 3
R2	7/15/2024	VE Changes

CONFORMED SET

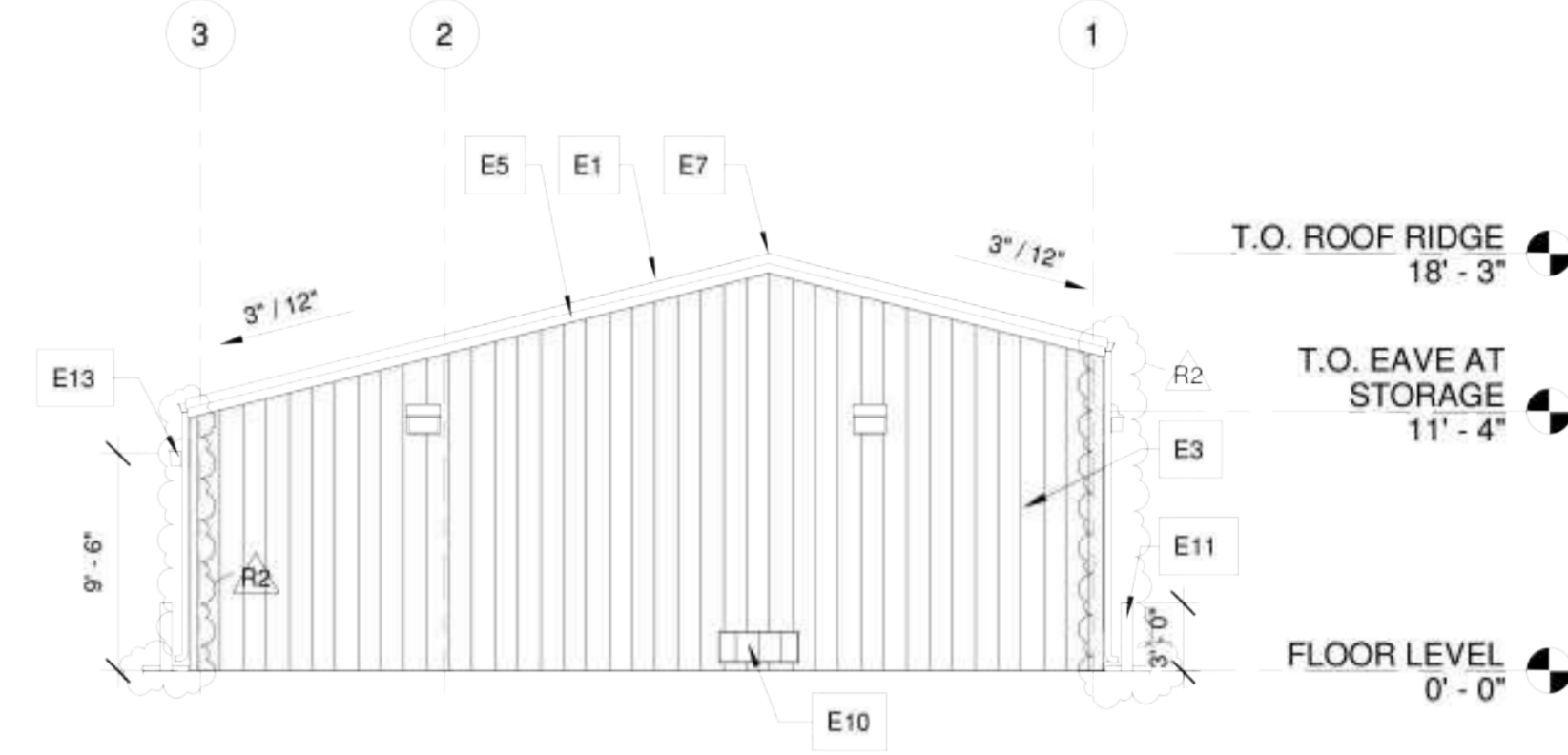
SHEET TITLE
MAINTENANCE FACILITY EXTERIOR ELEVATIONS

PROJECT NO. 22010	DATE 09/19/24
DRAWN BY STAFF	SCALE As indicated
CHECKED BY NR	
SHEET NO.	

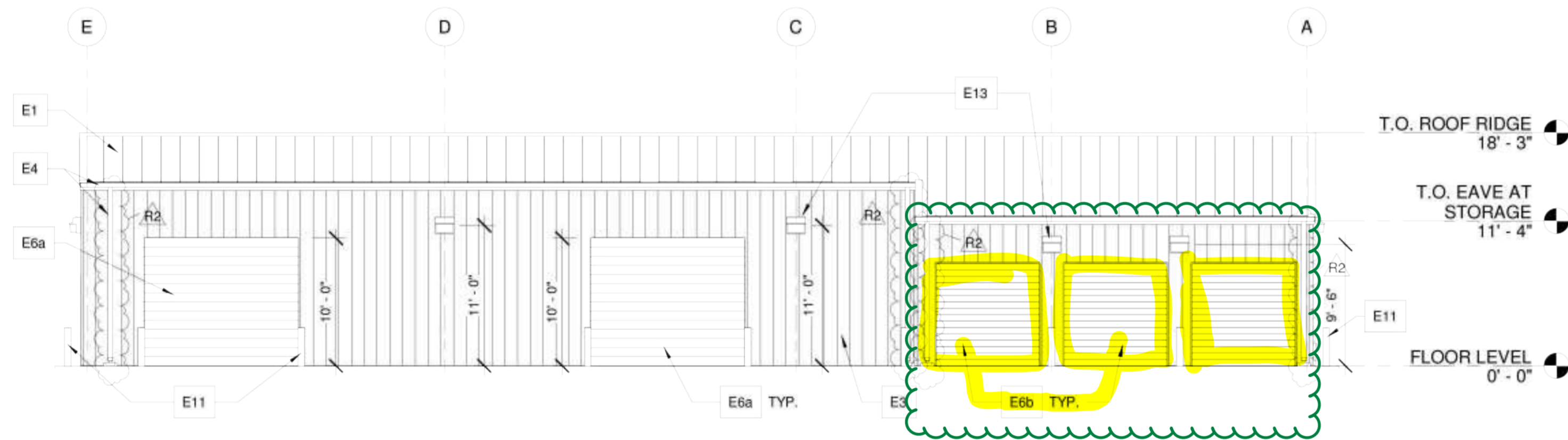
A3.01J



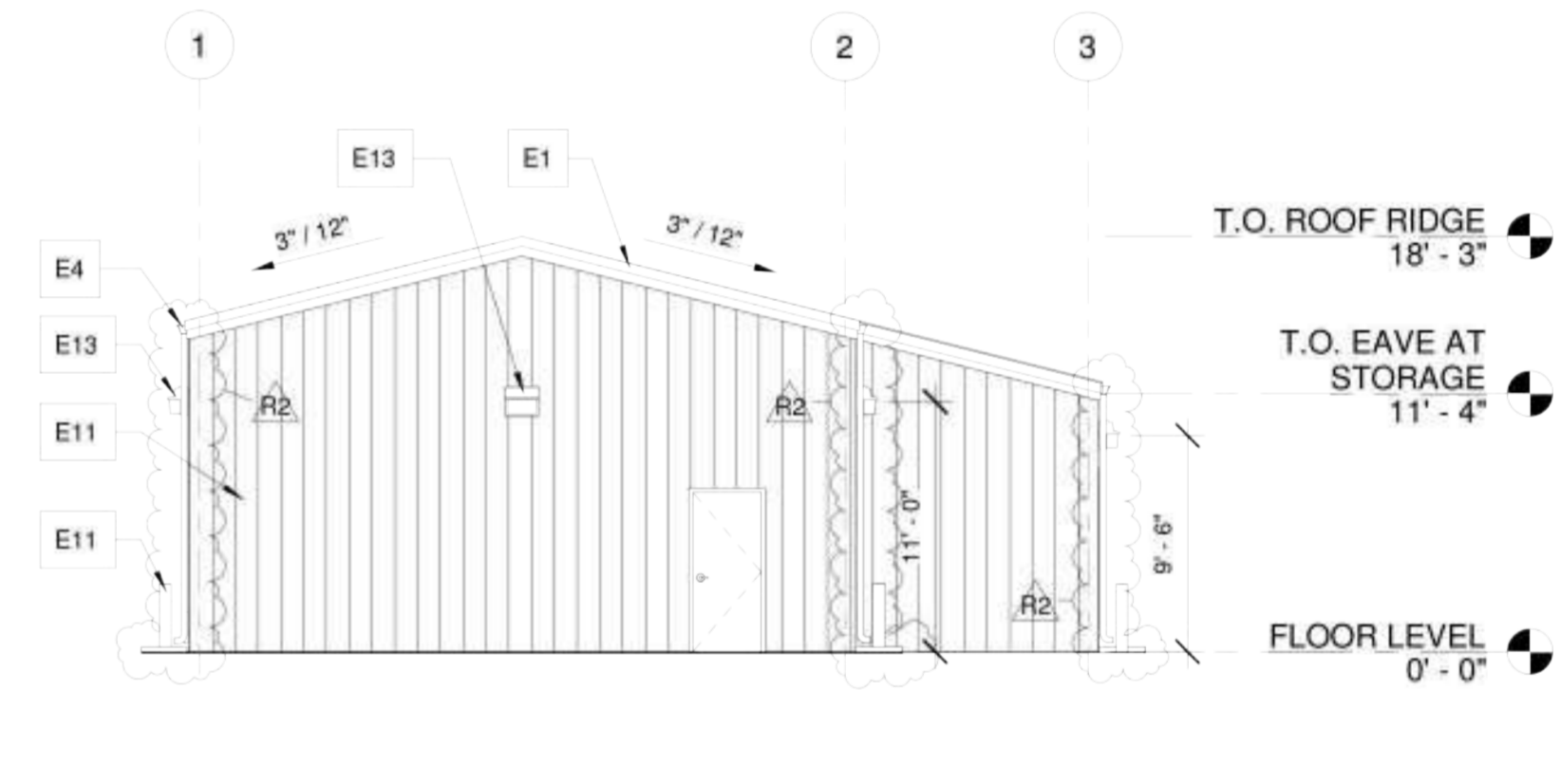
11 MAINTENANCE FACILITY NORTH ELEVATION
A3.01J 1/8" = 1'-0"



2 MAINTENANCE FACILITY EAST ELEVATION
A3.01J 1/8" = 1'-0"



3 MAINTENANCE FACILITY SOUTH ELEVATION
A3.01J 1/8" = 1'-0"



4 MAINTENANCE FACILITY WEST ELEVATION
A3.01J 1/8" = 1'-0"

GENERAL NOTES

- ARCHITECTURAL BUILDING FFE LISTED AS 0'-0", COORDINATE ACTUAL W/ CIVIL.
- ELEVATION MARKS TO BE VERIFIED IN FIELD WITH MATERIAL AND ASSEMBLY DIMENSIONS.
- DIMENSIONS ARE FROM FINISH FLOOR. (U.N.O.)
- SEE STRUCTURE FOR ALL FOOTING & SLAB REQUIREMENTS.
- SEE SHEET A4 SERIES FOR WALL SECTIONS & DETAILS.
- SEE SHEET A6 SERIES FOR RCP.
- SEE SHEET A7 SERIES FOR ROOF PLANS.
- SEE SHEET A8 SERIES FOR DOOR SCHEDULE & DETAILS.
- SEE SHEET A8 SERIES FOR WINDOW SCHEDULE & DETAILS.
- SEE SHEET A9 SERIES FOR ARCHITECTURAL WOODWORK AND FINISH LEGEND.

ELEVATION KEYNOTES

- E1 PEMB. PRE-FINISHED GALV. METAL ROOFING, 3/12 SLOPE, TYP.
- E2 PRE-FINISHED ALUMINUM DRAINABLE LOUVER W/ INSECT SCREEN, TYP.
- E3 PEMB. PRE-FINISHED GALV. METAL WALL PANELS, TYP.
- E4 5X5 PRE-FIN. ALUM GUTTER & 4X4 DOWNSPOUT SYSTEM, TYP.
- E5 PRE-FINISHED METAL RAKE TRIM, TYP. R2
- E6a PRE-FINISHED GALV. STEEL OVERHEAD COILING SERVICE DOOR. - SEE DOOR SCHEDULE
- E6b PRE-FINISHED GALV. STEEL SECTIONAL SERVICE DOOR. - SEE DOOR SCHEDULE
- E7 PRE-FINISHED GRAVITY VENTILATOR AT ROOF, TYP. - SEE MECH
- E8 HOLLOW METAL DOOR AND FRAME, PAINTED, TYP. - SEE DOOR SCHEDULE
- E9 WINDOW & HOLLOW METAL WINDOW FRAME PAINTED, TYP. - SEE WINDOW SCHEDULE

- E10 THRU WALL PTAC UNIT. COORDINATE WITH MECH FOR OPENING DIMENSIONS
- E11 STEEL BOLLARD, CONCRETE FILLED, PAINTED, TYP. - SEE 3 / A4.02J
- E12 STEEL COLUMN AND BEAM FRAME, PAINTED, PROVIDE ZINC RICH EPOXY COAT W/ ACRYLIC URETHANE TOP COAT, TYP.
- E13 EXTERIOR WALL MOUNTED LIGHT FIXT. TYP. - SEE ELEC.
- E14 BUILDING IDENTIFICATION SIGN. VERIFY LOCATION WITH OWNER. IMAGE / VERBIAGE TO BE PROVIDED BY OWNER

FINISH NOTES

- NUMBER DENOTES COLOR
- "E" DENOTES EPOXY
- "X" DENOTES EXTERIOR
- SEE SPECS FOR PRIMER AND FINISH STYLES
- SEE FINISH LEGEND

COLOR SCHEDULE NOTES

- SUBMIT SPECIFIED COLORS FOR REVIEW.
- SUBMIT MANUFACTURER'S STANDARD COLORS FOR REVIEW AND SELECTION FOR METAL APPLICATIONS.

EXTERIOR FINISH SCHEDULE

ITEM NAME	MATERIAL	FINISH
BEAMS & COLUMNS	STEEL	PRE-FINISHED, TO MATCH PNT - TBD
BOLLARDS	GROUTED STEEL	PNT-6
DOORS & DOOR FRAMES	HOLLOW METAL	PNT-6
GUTTER SYSTEM	PRE-FINISHED METAL	MTL-1
OVERHEAD DOORS	STEEL	PRE-FINISHED, ARCH TO SELECT
ROOF, RIDGE VENT, CAPS	PRE-FINISHED METAL	MTL-1
TRIM	PRE-FINISHED METAL	MTL-1
WALL PANELS: EXTERIOR METAL + 2X4 + 1/2" PLYWOOD	PRE-FINISHED METAL	MTL-2
WINDOW FRAME	ALUMINUM	PRE-FINISHED, CLEAR ANODIZED

DOOR SCHEDULE

DOOR NUMBER	ROOM NAME	ROOM NUMBER	TYPE	PANEL SIZE			FRAME			FIRE RATING	HEAD DETAIL	JAMB DETAIL	SILL DETAIL	HARDWARE SET	DOOR NOTES		
				WIDTH	HEIGHT	THICKNESS	MAT.	FIN.	TYPE							MAT.	FIN.
J01	OFFICE	J01	DA	3'-0"	7'-0"	0'-1 3/4"	H.M.	PNT.	FA	H.M.	PNT-3	-	1/A8.01J	2/A8.01J	3/A8.01J	ND80TD	1, 2, 3, 4, 6
J02	BREAK ROOM	J02	DA	3'-0"	7'-0"	0'-1 3/4"	H.M.	PNT.	FA	H.M.	PNT-3	-	1/A8.01J	2/A8.01J	3/A8.01J	ND10	1, 4, 5
J04	STORAGE	J04	DC	8'-0"	8'-0"	0'-2"	STL.	PNT.	FB	STL.	PNT	-	-	-	-	MFR. PROVIDED	1, 2, 8
J05	STORAGE	J05	DC	8'-0"	8'-0"	0'-2"	STL.	PNT.	FB	STL.	PNT	-	-	-	-	MFR. PROVIDED	1, 2, 8
J06	STORAGE	J06	DC	8'-0"	8'-0"	0'-2"	STL.	PNT.	FB	STL.	PNT	-	-	-	-	MFR. PROVIDED	1, 2, 8
J07A	MAINTENANCE SHOP 1	J07	DB	12'-0"	10'-0"	0'-3"	STL.	FF	FC	STL.	FF	-	-	-	-	MFR. PROVIDED	1, 2, 8
J08A	MAINTENANCE SHOP 2	J08	DA	3'-0"	7'-0"	0'-1 3/4"	H.M.	PNT.	FA	H.M.	PNT-3	-	1/A8.01J	2/A8.01J	3/A8.01J	ND80TD	1, 2, 3, 4, 6
J08B	MAINTENANCE SHOP 2	J08	DB	12'-0"	10'-0"	0'-3"	STL.	FF	FC	STL.	FF	-	-	-	-	MFR. PROVIDED	1, 2, 8
J08C	MAINTENANCE SHOP 2	J08	DB	12'-0"	10'-0"	0'-3"	STL.	FF	FC	STL.	FF	-	-	-	-	MFR. PROVIDED	1, 2, 8
J09A	TOOLS CLOSET	J09	DA	3'-0"	7'-0"	0'-1 3/4"	H.M.	PNT.	FA	H.M.	PNT-3	-	1/A8.01J	2/A8.01J	3/A8.01J	ND80TD	1, 2, 3, 4, 6
J09B	TOOLS CLOSET	J09	DA	3'-0"	7'-0"	0'-1 3/4"	H.M.	PNT.	FA	H.M.	PNT-3	-	1/A8.01J	2/A8.01J	3/A8.01J	ND80TD	1, 2, 3, 4, 6
J10A	MAINTENANCE SHOP 3	J10	DB	12'-0"	10'-0"	0'-3"	STL.	FF	FC	STL.	FF	-	-	-	-	MFR. PROVIDED	1, 2, 8
J10B	MAINTENANCE SHOP 3	J10	DB	12'-0"	10'-0"	0'-3"	STL.	FF	FC	STL.	FF	-	-	-	-	MFR. PROVIDED	1, 2, 8
J10C	MAINTENANCE SHOP 3	J10	DA	3'-0"	7'-0"	0'-1 3/4"	H.M.	PNT.	FA	H.M.	PNT-3	-	1/A8.01J	2/A8.01J	3/A8.01J	ND80TD	1, 2, 3, 4, 6

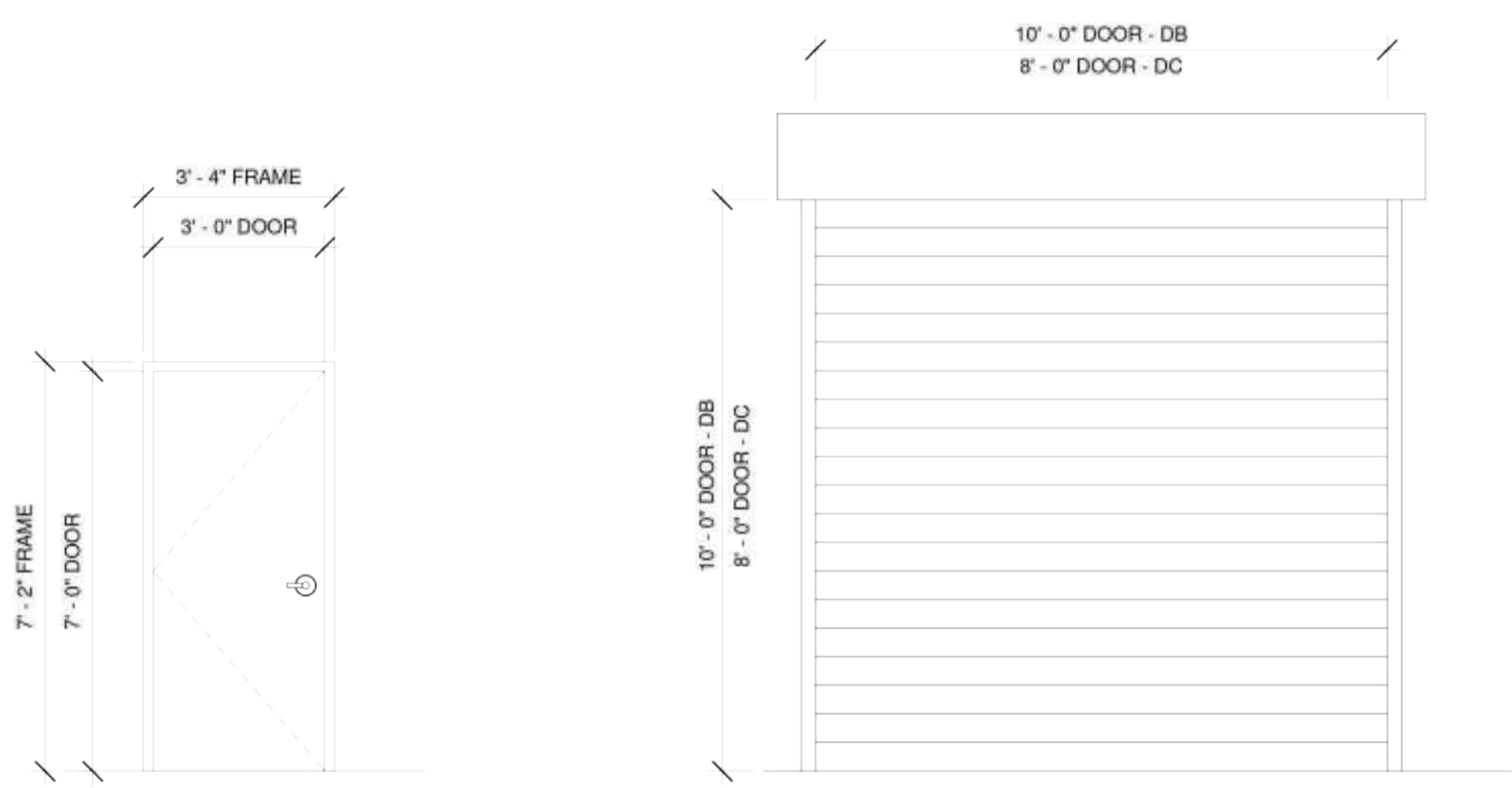
DOOR NOTES

- SEE SPECIFICATIONS FOR HARDWARE SETS
- INSULATED
- WEATHER STRIPPING
- DOOR CLOSER
- CYLINDRICAL LOCK SYSTEM
- KEYPAD AND CARD READER
- COILING OVERHEAD DOOR WITH HOOD
- ON TRACK OVERHEAD DOOR

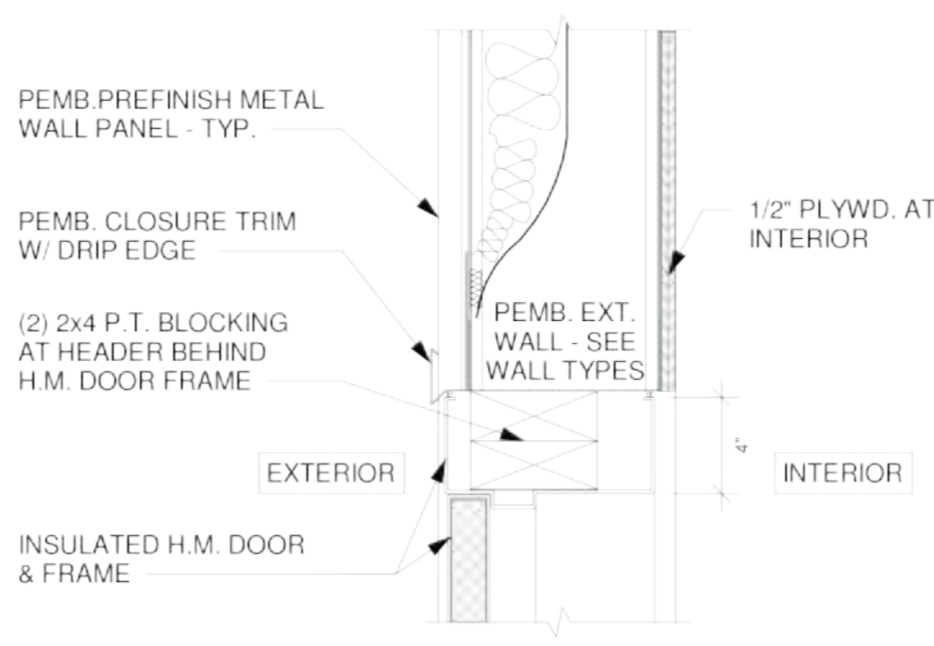
DOOR HARDWARE LIST

LEVER DESIGN: RHODES (RHO) FINISH: SATIN NICKEL
 SILENCER: ROCKWOOD 608.
 DOOR SHOE: PEMKO 316AS
 THRESHOLD: NATIONAL GUARD R059 RAMP THRESHOLD, ADA COMPLIANT UNIT WITH SILICONE INSERT MUST BE COMPATIBLE WITH FLOOR LEVELS.
 KICK PLATE & MOP PLATE ROCKWOOD K1050-U32D (8" x 34" x 0.050").
 HINGES: STANLEY FBB192 5 x 5, STEEL, 5 KNUCKLE, (3 PER LEAF).
 CLOSE: LCN 4040XP SIZE 2, DOOR MOUNTED.
 DOOR CLOSERS MOUNTED ON INTERIOR SIDE.
 LATCH GUARD: LVES LG13, OR COMPATIBLE WITH HARDWARE.

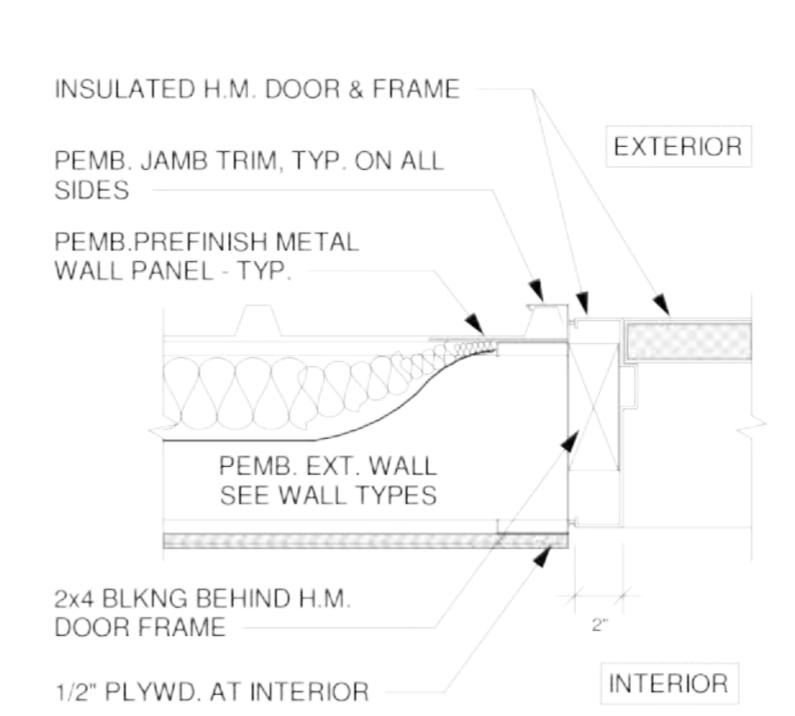
DOOR & FRAME TYPES



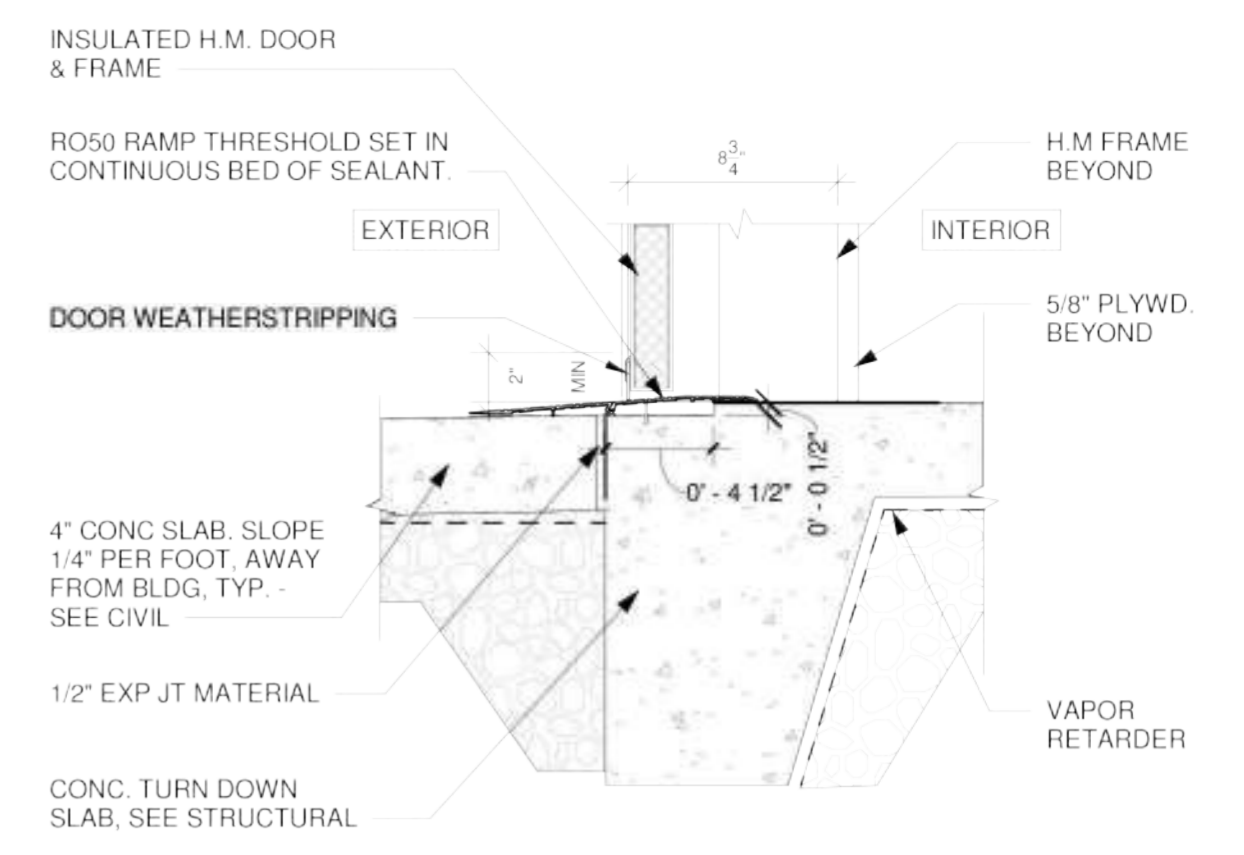
1 DOOR HEAD DETAIL
A8.01J 1 1/2" = 1'-0"



2 DOOR JAMB DETAIL
A8.01J 1 1/2" = 1'-0"



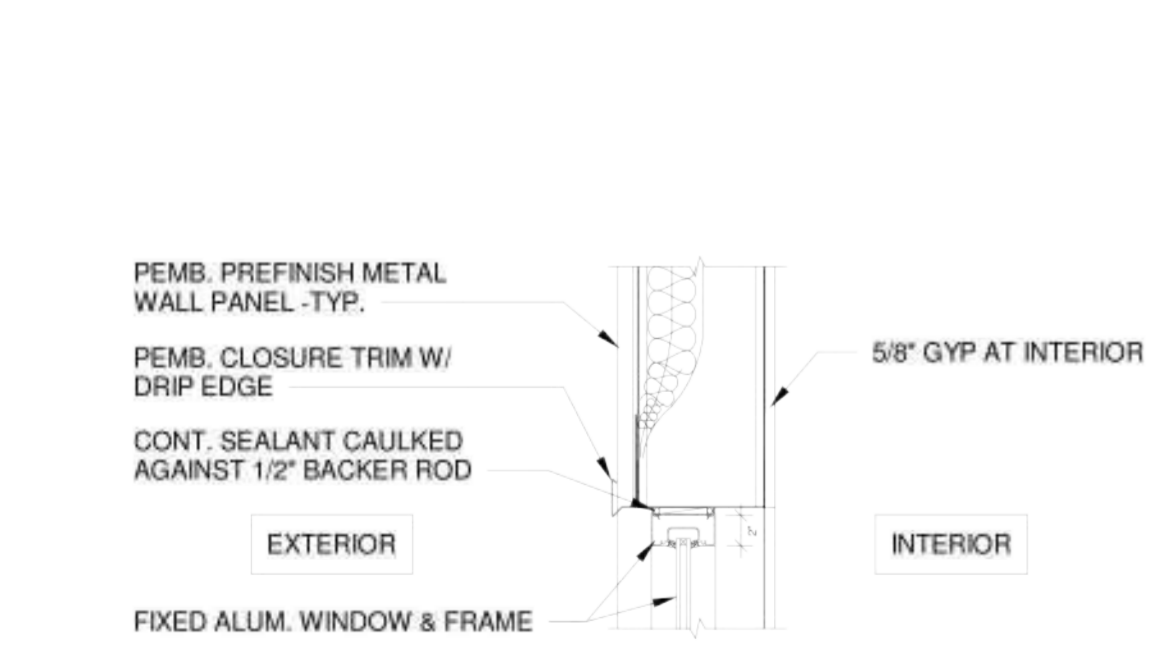
3 DOOR SILL DETAIL
A8.01J 1 1/2" = 1'-0"



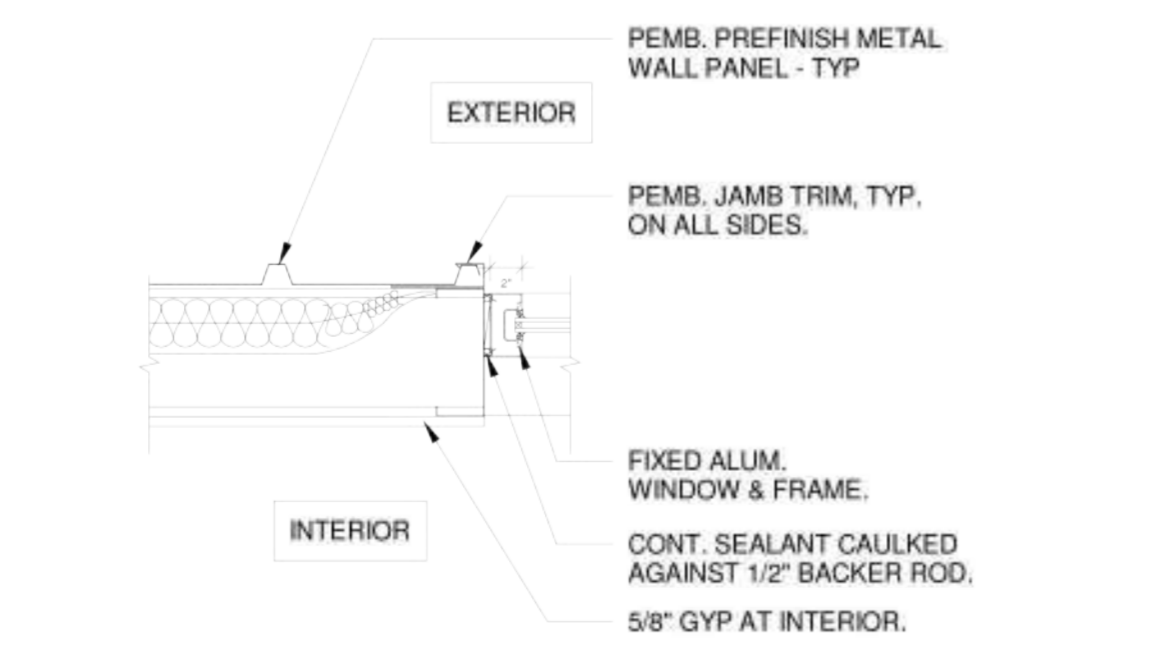
WINDOW SCHEDULE

ROOM NUMBER	ROOM NAME	WINDOW TYPE	WIDTH	HEIGHT	HEAD	JAMB	SILL	COMMENTS
A133	OFFICE	W01	3'-0"	4'-0"	RFI 068			

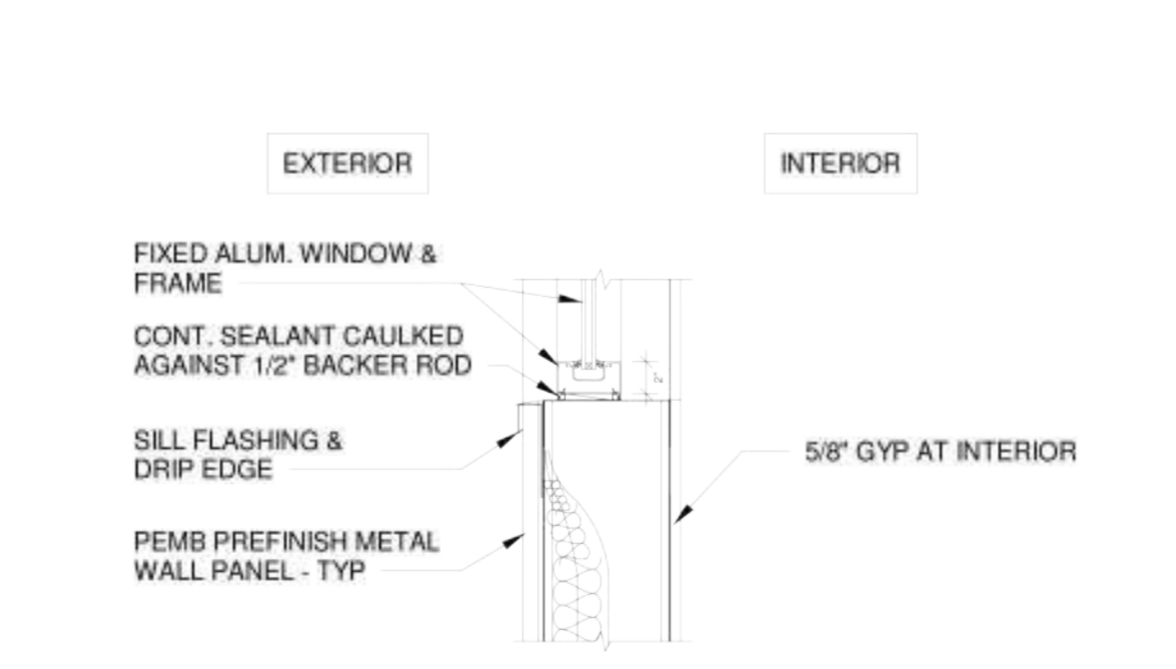
4 WINDOW HEAD
A8.01J 1" = 1'-0"



5 WINDOW JAMB
A8.01J 1" = 1'-0"



6 WINDOW SILL
A8.01J 1" = 1'-0"



LOSE DESIGN
SPACES FOR LIFE.



THE GROVE
BUILDING "J" - MAINTENANCE FACILITY
1089 HWY 81, LOGANVILLE, GA 30052
PREPARED FOR: WALTON COUNTY
LOGANVILLE, GEORGIA

SUBMITTALS / REVISIONS

NO.	DATE	DESCRIPTION
A4	04/28/2023	Advertisement 4
R2	7/15/2024	VE Changes

CONFORMED SET

SHEET TITLE
DOOR SCHEDULE, WINDOW INFORMATION, AND DETAILS

PROJECT NO.	DATE
22010	09/19/24
DRAWN BY	SCALE
STAFF	As indicated
CHECKED BY	
NR	
SHEET NO.	

A8.01J

OVERHEAD COILING DOORS – SECTION 08 33 23
Page 3 of 4

3. Finish: Clear anodized.
4. Bottom bar: Aluminum extrusion with bottom astragal.
5. Guides: Extruded aluminum shapes with clear anodized finish with continuous silicone-treated woolpile strips.
6. Brackets: Steel to support counterbalance, curtain and hood.
7. Counterbalance: Helical torsion spring type housed in a steel tube or pipe
8. Hood: Aluminum. Provide intermediate support brackets as required.
9. Operation: Manual, push-up.
10. Lock: Cylinder lock – see drawings for key side.
11. Mounting: Between the jambs.

2.4 OVERHEAD COILING SERVICE DOOR:

- A. Product/Manufacturer: The basis-of-design is 625 Series Stormtite Insulated Heavy-Duty Rolling Service Doors by Overhead Door Corporation.
- B. Description:
 1. Curtain: Interlocking flat insulated slats, Type F2651 fabricated of 24 ga galvanized steel (front and back). Endlocks shall be attached to alternate slats to maintain curtain alignment and prevent lateral slat movement.
 2. Finish: Manufacturer standard powder coat in color as selected by the Architect.
 3. Bottom Bar: Primed Galvanized Steel with vinyl weatherseal.
 4. Guides: Structural Galvanized Steel.
 5. Brackets: Steel to support counterbalance, curtain and hood.
 6. Counterbalance: Helical torsion spring type housed in a steel tube or pipe barrel. Standard Spring: 20,000 cycle. Windload: 20 psf.
 7. Hood: 24 ga galvanized steel. Provide intermediate support brackets as required.
 8. Operation: Manual chain hoist.
 9. Locking: Slide bolt, interior side.
 10. Wall Mounting Condition: Face of wall mounting.
 11. Insulation: Foam-In-Place, CFC-free polyurethane, R-7.7
 12. Weatherseals: Bottom, exterior curtain-side guide, interior hood baffle.
 13. Bottom sensing edge

2.5 STEEL SECTIONAL DOOR:

- A. Product/Manufacturer: The basis-of-design is 420 Series Steel Sectional Doors by Overhead Door Corporation.
- B. Description: Steel door assembly with rabbeted meeting rails to form weathertight joints and provide full-width interlocking structural rigidity. Units shall have the following characteristics:
 1. Panel Thickness: 2 inch.
 2. Exterior Surface: Ribbed.
 3. Steel: 20 gauge, galvanized.
 4. Center and End Stiles: 16 gauge.
 5. Standard Springs: 10,000 cycles.
 6. Finish and Color: Manufacturer standard epoxy coating in color as selected by the Architect.
 7. Windload Design: ANSI/AGDM 102 standards and as required by code.



Click to Zoom

Sectional Steel Door Model 420

MODEL 420

Sectional steel door model 420 is designed for heavy-duty use in a variety of commercial and industrial applications. The Model 420 door features a 2" (51 mm) panel thickness, 16-gauge steel intermediate and end stiles, ribbed steel exterior and a white paint finish. This 20-gauge steel door is available in sizes up to 31' 2" (9500 mm) in width and 24' 1" (7341 mm) in height. Numerous options including weatherstripping, reinforced struts, movable center posts, and motor operation allow these heavy-duty doors to meet nearly any project requirements.

[REQUEST A QUOTE](#)

[FIND A DISTRIBUTOR](#)

Overview

Options

Brochures

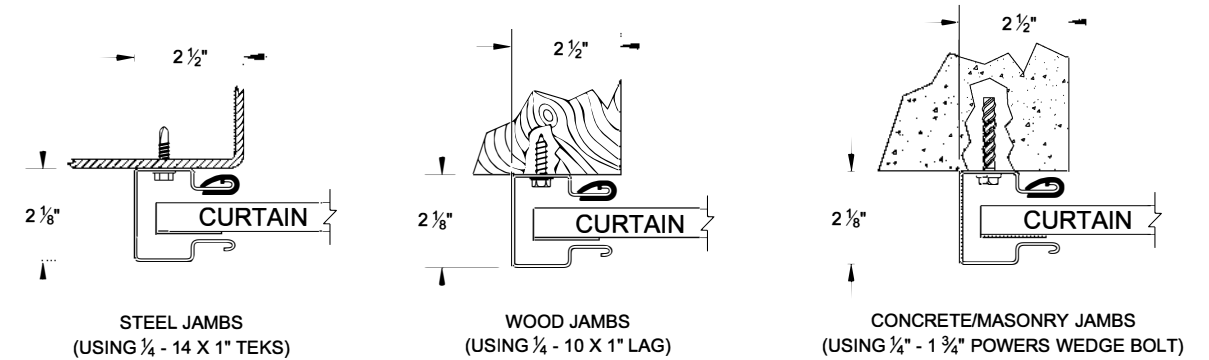
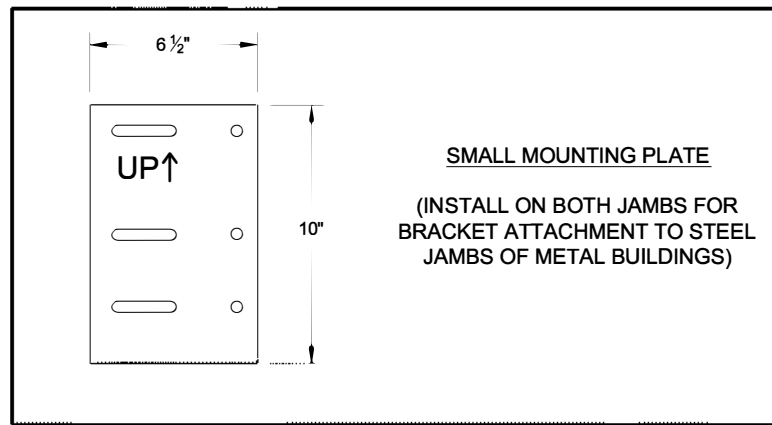
Documents

End stiles	16-gauge steel
Center stiles	16-gauge steel
Standard mounting	Angle mount
Standard track	2" (51 mm)
Standard springs	10,000 cycle
Weather Stripping	Flexible PVC bottom with retainer
Operation	Manual pull rope or electric operator
Finish	White baked on-polyester
Lock	Interior mounted slide lock
Wind Load	FBC approved wind load options available

Warranty

NOTES:

1. OPERATION TYPE MAY BE PUSH-UP, HAND CHAIN OR ELECTRIC.
2. FOR CRITICAL FITS DUE TO REDUCED AVAILABLE HEADROOM OR SIDEROOM CLEARANCES, CONSULT FACTORY.
3. CLEARANCES SHOWN ARE MAXIMUMS. LESSER CLEARANCES MAY BE POSSIBLE.
4. UNLESS OTHERWISE NOTED, DOORS SHALL BE PROVIDED WITH SLIDE LOCKS AT EACH END OF BOTTOM BAR, ENGAGING GUIDES IN THE LOCKED POSITION.
5. ALL OPENING PREPARATION, ELECTRICAL POWER AND FIELD PAINTING SHALL BE PROVIDED BY OTHERS.
6. SERIES 1950I IS AN INSULATED SERIES 1950.
7. CURTAIN FINISH SHALL BE SILICONE POLYESTER PRE-PAINT OVER GALVANIZED GRADE 80 STEEL.
8. GUIDES, BRACKETS, BOTTOM BAR ANGLE AND HEAD STOPS ARE ZINC COATED.
9. MAXIMUM OPENING SIZE: 12'-0" X 14'-0".

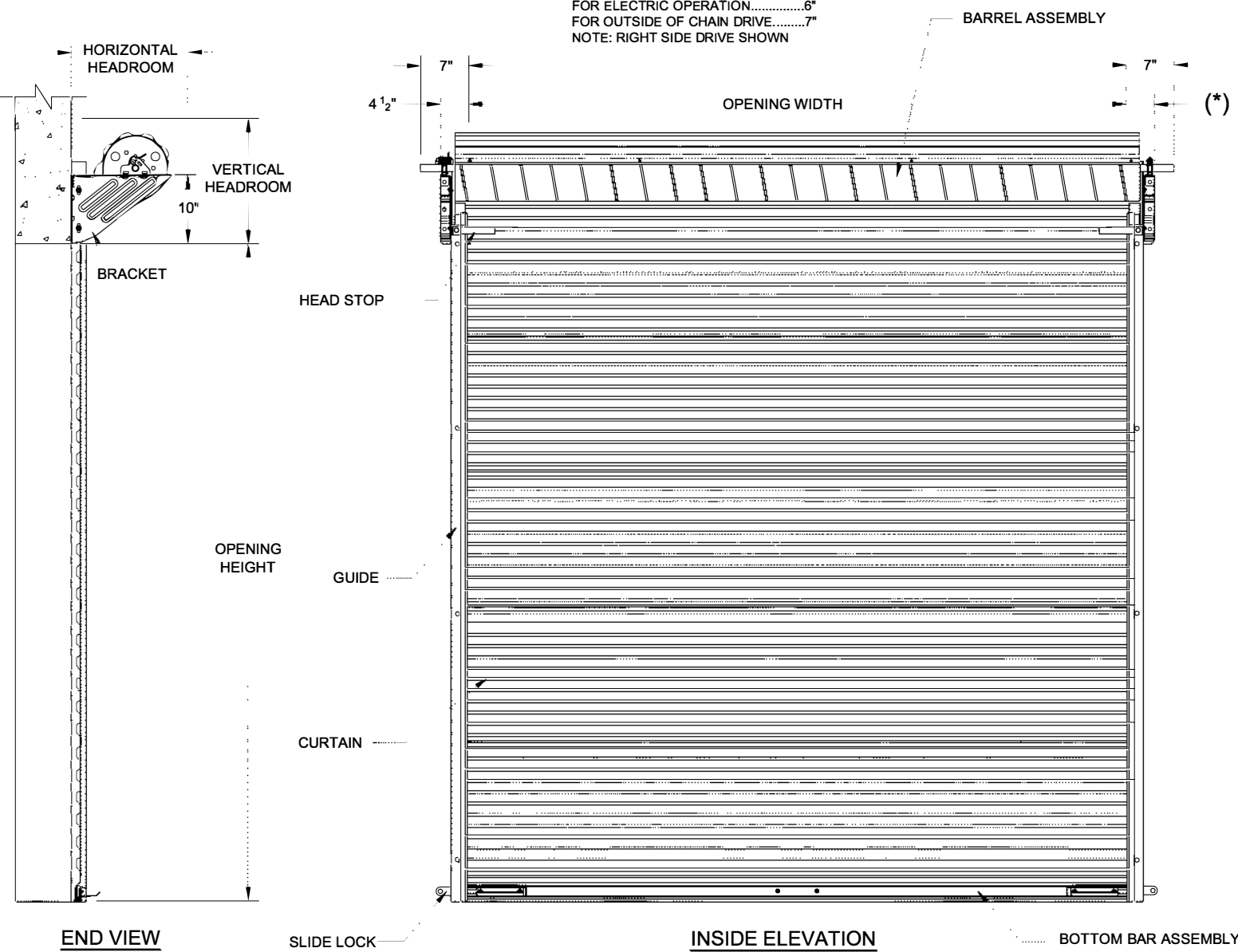


16 GA GUIDE MOUNTING DETAIL

BRACKET ATTACHMENT

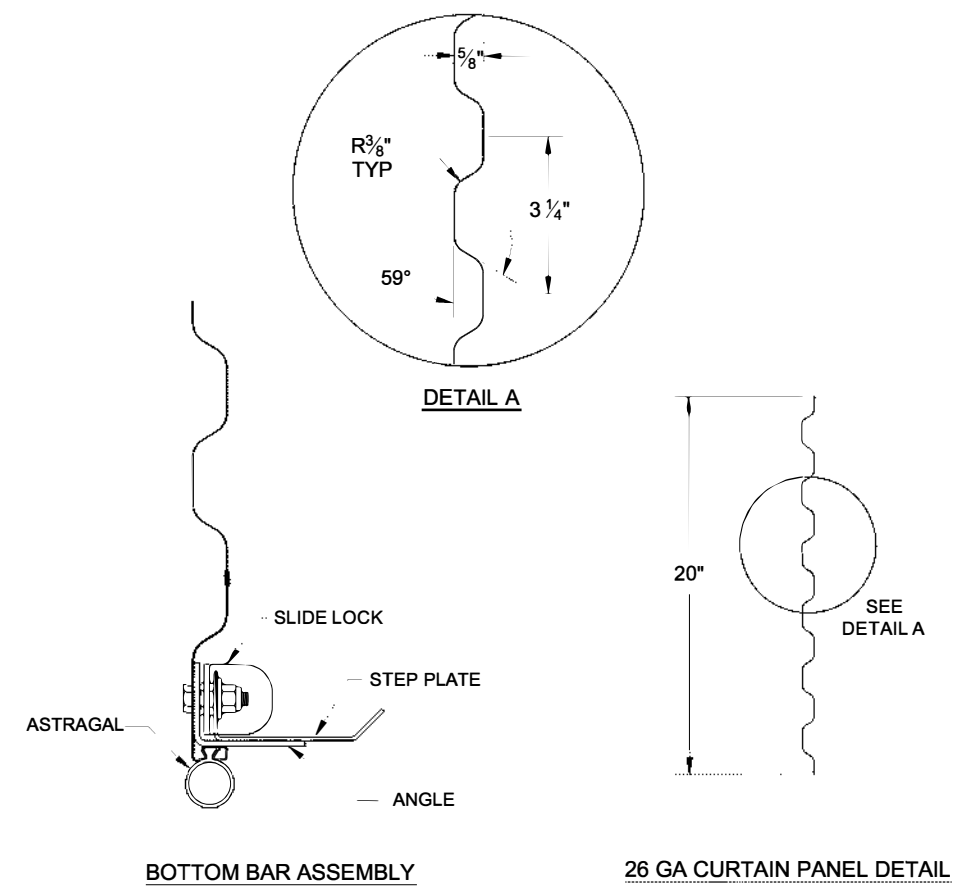
CONCRETE/MASONRY: POWERS WEDGE-BOLT, 3/8" X 1 3/4" LONG
 WOOD: LAG SCREW, 3/8" - 7 X 3" LONG
 STEEL: HEX BOLT, GR.5, 3/8" - 16 X 1 1/4" LONG

(*) FOR PUSH-UP OPERATION.....4 1/2"
 FOR HAND CHAIN OPERATION.....5 1/2"
 FOR ELECTRIC OPERATION.....6"
 FOR OUTSIDE OF CHAIN DRIVE.....7"
 NOTE: RIGHT SIDE DRIVE SHOWN



HEADROOM REQUIRED

OPENING HEIGHT	VERTICAL HEADROOM	HORIZONTAL HEADROOM
THRU 8'-0"	19"	19"
OVER 8'-0" THRU 10'-0"	20"	20"
OVER 10'-0" THRU 14'-0"	20 1/2"	20"



D.V. 08/13/2013

COMMERCIAL DOOR SERIES: 1950/1950I

CUSTOMER NUMBER:		DATE:
CUSTOMER NAME:		CONTACT:
PROJECT NAME:		
PROJECT LOCATION:		
PLANT:		SALESPERSON:
DRAWN BY:		DATE:
DRAWING NUMBER:		SHT: OF:

JANUS INTERNATIONAL CORPORATION
 135 JANUS INTERNATIONAL BLVD.
 TEMPLE, GA 30179-4435
 770-562-2850 FAX: 770-562-2264

FACTORY ORDER NUMBER	DOOR SERIES		QTY	OPENING SIZE		JAMB TYPE			OUTSIDE CURTAIN COLOR	OPERATION			OPERATION HAND	WEATHERSTRIP			ADDED OPTIONS
	1950	1950I		WIDTH	HEIGHT	STEEL	CONC./MAS	WOOD		PUSH UP	REDUCED CHAIN	ELECTRIC		TOP	HEADER	SIDE	
	<input type="checkbox"/>	<input type="checkbox"/>				<input type="checkbox"/>	<input type="checkbox"/>	<input type="checkbox"/>		<input type="checkbox"/>	<input type="checkbox"/>	<input type="checkbox"/>		<input type="checkbox"/>	<input type="checkbox"/>	<input type="checkbox"/>	
	<input type="checkbox"/>	<input type="checkbox"/>				<input type="checkbox"/>	<input type="checkbox"/>	<input type="checkbox"/>		<input type="checkbox"/>	<input type="checkbox"/>	<input type="checkbox"/>		<input type="checkbox"/>	<input type="checkbox"/>	<input type="checkbox"/>	
	<input type="checkbox"/>	<input type="checkbox"/>				<input type="checkbox"/>	<input type="checkbox"/>	<input type="checkbox"/>		<input type="checkbox"/>	<input type="checkbox"/>	<input type="checkbox"/>		<input type="checkbox"/>	<input type="checkbox"/>	<input type="checkbox"/>	



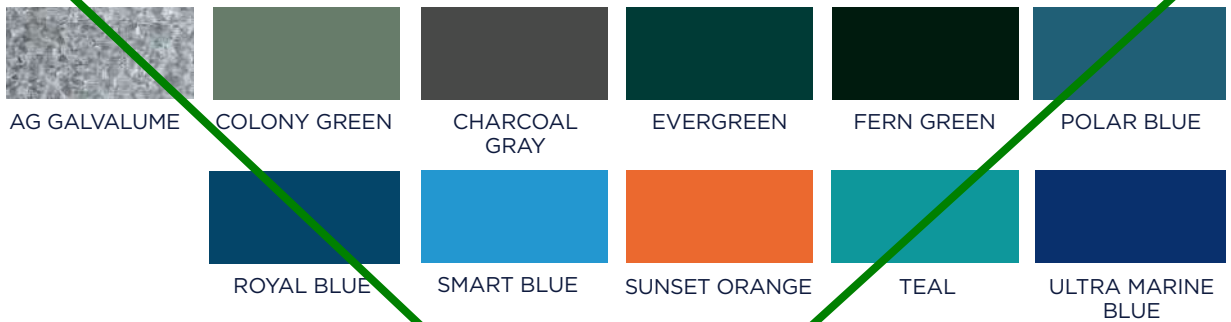
Owner and design team to choose roll up door finish from standard colors list.

STANDARD COLORS



SPECIALTY COLORS (TIER 1)

PRICING TIERS
An upcharge will be applied to all specialty door colors on all door models.



SPECIALTY COLORS (TIER 2)



SPECIALTY COLORS (TIER 3)



SPECIALTY COLORS (TIER 4)



PLEASE NOTE: All color images are provided to assist in branding and marketing processes, and are not a guarantee of exact color match. For actual paint matching codes for the Home Depot, please reference the specific color chart on the Janus website.

For paint warranty, please visit: JanusIntl.com/paintwarranty. For more information, please call: 866-562-2580