

**Walton County
The Grove**

**Change Proposal #22
Amphitheater AVL
Infrastructure Add**

General Contractor:

**Reeves Young
45 Peachtree Industrial Boulevard N.W.
Sugar Hill, GA 30518
770-271-1159**



January 30, 2025

Walton County, GA
The Grove, a Walton County Parks &
Recreation Facility

Attn: John Ward, County Manager
Jeff Prine, Capital Project Manager –
Ascension Program Management

Change Proposal #22 – Building F (Amphitheater) AVL Infrastructure Add

The below change proposal is for revisions made per Bulletin #5 (#4 previously) that included additional infrastructure required for the AVL scope to be added to the project. The cost shown below and subsequent backup is only for the changes shown at the amphitheater red lines in the above referenced bulletin. Please note: Supply for Cam locks shown may require revised service. Pricing to Musco poles is based on conduit to 25' per DCR Media email dated 01.30.25. The fastening and mounting required is TBD. RY reserves the right to price any potential changes associated with these items.

TIME: RY will incur two weeks (10 working days) of additional time for the additional infrastructure. While the immediate impact of this additional work does not currently impact the project end date, RY reserves the right to submit for an extension of time.

Description	Qty	Unit	Unit Price	Total
AVL infrastructure	1	LS	\$45,861.85	\$45,861.85
Total Subcontractor Cost	1	LS		\$45,861.85
Payment & Performance Bond	0.597	%	\$273.80	\$273.80
General Liability Insurance	0.811%	%	\$371.94	\$371.94
Builders Risk Insurance	0.174%	%	\$79.80	\$79.80
RY Overhead and Profit	10	%	\$4,586.19	\$4,586.19
TOTAL				\$51,173.57

If you have any questions or require any additional information, please do not hesitate to contact us at (470) 725-0022 or via email at iarnold@reevesyoung.com

Sincerely,
Reeves Young, LLC

Isaiah Arnold

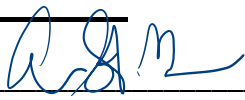


Project Manager

45 Peachtree Industrial Blvd, Suite 200
Sugar Hill, GA 30518

770.271.1159
reevesyoung.com

Approval

Lose Design (Architect of Record)	Signature: 	Date: <u>2/3/2025</u>
Ascension PM (Capital Project Manager)	Signature: Thomas J. Prine	Date: 02.03.2025
Walton County	Signature: _____	Date: _____
Reeves Young	Signature: _____	Date: _____

ES&C of GA, Inc.

1861 Trinity Creek Drive
 Dacula, GA 30019 US
 +13055278862
 Jonathan@escoga.com

Estimate

ADDRESS
 Reeves Young
 45 Peachtree Industrial Blvd,
 Sugar Hill, GA 30518,
 United States of America

ESTIMATE 1087-R
 DATE 01/30/2025

DATE	ACTIVITY	DESCRIPTION	QTY	RATE	AMOUNT
	Change Order	This change order pertains to the electrical changes made to Building F ONLY on the Bulletin #4 dated 11/25/2024.	1	0.00	0.00
		THIS CHANGE ORDER IS FOR THE BUILDING F CHANGES ONLY			
	Material	Misc. Material: ~ Conduit ~ Couplings ~ Connectors ~ Boxes ~ Mud Rings ~ Receptacles/WR ~ Straps ~ Screws ~ (2) Camlocks (ES&C reserves the right to charge any additional cost associated with upgrading the service from 400(A) to 600(A))	1	16,489.27	16,489.27
	Material	Equipment Rental	1	1,100.00	1,100.00
	Labor	Below is a cost breakout for Labor associated with the scope of work being performed. 4 electricians x 2 weeks each	400	57.46	22,984.00
	Tax	Tax Rate @ 7%	0.07	17,589.27	1,231.25
	Overhead/Profit	Overhead/Profit @ 10%	0.10	40,573.27	4,057.33

THIS IS AN ESTIMATE ONLY.
 In order to proceed with this scope of work, ES&C GA. Inc. stipulates that our invoice must be signed alongside a change order directive signed by either the client or the general contractor.

TOTAL

\$45,861.85

Accepted By

Accepted Date

Thank You For Choosing ES&C GA, INC.

Page 1 of 1

SUBMITTALS / REVISIONS

NO	DATE	DESCRIPTION

SHEET TITLE

FLOOR PLAN - POWER - ELECTRICAL

PROJECT NO.	DATE
21xxx	
DRAWN BY	SCALE
SCM	1/4" = 1'-0"
CHECKED BY	
SWL	
SHEET NO.	SHEET OF 40

E1.1F

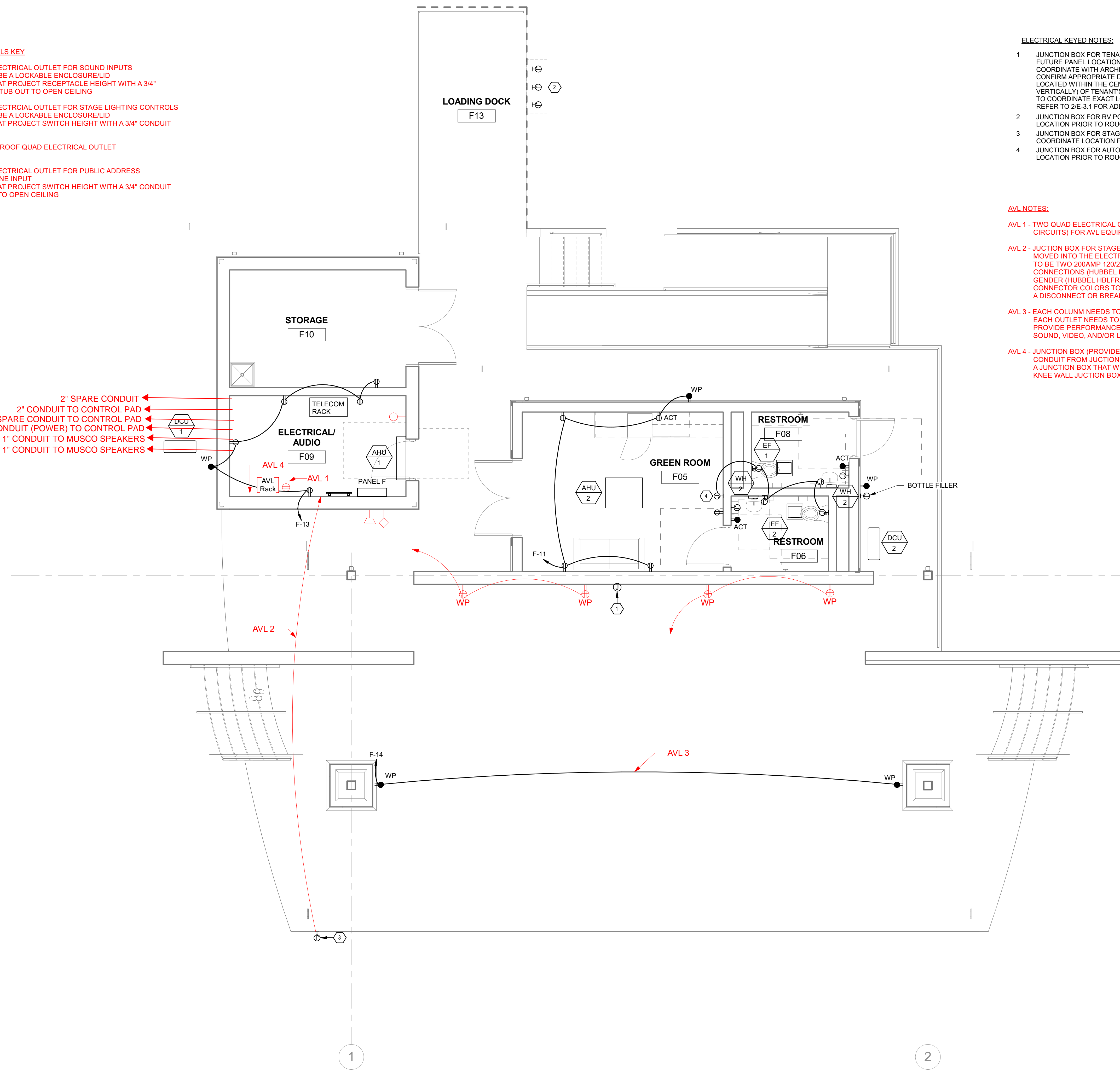
NOT FOR CONSTRUCTION

- ELECTRICAL KEYED NOTES:**
- JUNCTION BOX FOR TENANT SIGNAGE. ROUTE 3/4" C. TO FUTURE PANEL LOCATION. PULL STRINGS. COORDINATE WITH ARCHITECTURAL ELEVATIONS TO CONFIRM APPROPRIATE DETAIL. JUNCTION BOX TO BE LOCATED WITHIN THE CENTER (HORIZONTALLY AND VERTICALLY) OF TENANT'S SIGN BAND. CONTRACTOR TO COORDINATE EXACT LOCATION WITH TENANT. REFER TO 2/E-3.1 FOR ADDITIONAL DETAILS.
 - JUNCTION BOX FOR RV POWER. COORDINATE LOCATION PRIOR TO ROUGH-IN.
 - JUNCTION BOX FOR STAGE QUICK CONNECT. COORDINATE LOCATION PRIOR TO ROUGH-IN.
 - JUNCTION BOX FOR AUTOMATIC VALVES. COORDINATE LOCATION PRIOR TO ROUGH-IN.

- AVL NOTES:**
- AVL 1 -** TWO QUAD ELECTRICAL OUTLETS (EACH ON A DEDICATED CIRCUITS) FOR AVL EQUIPMENT RACK
- AVL 2 -** JUNCTION BOX FOR STAGE QUICK CONNECT NEEDS TO BE MOVED INTO THE ELECTRICAL/AUDIO ROOM. THERE NEEDS TO BE TWO 200AMP 120/208 3Ø 5WIRE SERVICES WITH CAM-LOCK CONNECTIONS (HUBBEL HBLMR). NEUTRAL AND GROUND TO REVERSED GENDER (HUBBEL HBLFR) THAN THE 3 HOT LEGS. CAM-LOCK CONNECTOR COLORS TO MATCH PHASE COLOR. EACH SERVICE NEEDS A DISCONNECT OR BREAKER THAT IS ACCESSABLE.
- AVL 3 -** EACH COLUMN NEEDS TO HAVE A QUAD ELECTRICAL OUTLET AND EACH OUTLET NEEDS TO BE ON DEDICATED CIRCUITS. THIS WILL PROVIDE PERFORMANCERS WITH POWER FOR THEIR BACKLINE, SOUND, VIDEO, AND/OR LIGHTING EQUIPMENT THAT THEY MAY BRING
- AVL 4 -** JUNCTION BOX (PROVIDED BY AVL CONTRACTOR) NEEDS A 2" CONDUIT FROM JUNCTION BOX IN THE ELECTRICAL/AUDIO TO A JUNCTION BOX THAT WILL BE IN THE KNEE WALL (FOH LOCATION) KNEE WALL JUNCTION BOX PROVIDED BY AVL CONTRACTOR

- AVL SYMBOLS KEY**
- 2 GANG ELECTRICAL OUTLET FOR SOUND INPUTS NEEDS TO BE A LOCKABLE ENCLOSURE/LID MOUNTED AT PROJECT RECEPTACLE HEIGHT WITH A 3/4" CONDUIT STUB OUT TO OPEN CEILING
 - 2 GANG ELECTRICAL OUTLET FOR STAGE LIGHTING CONTROLS NEEDS TO BE A LOCKABLE ENCLOSURE/LID MOUNTED AT PROJECT SWITCH HEIGHT WITH A 3/4" CONDUIT STUB OUT
 - WP WEATHERPROOF QUAD ELECTRICAL OUTLET
 - 2 GANG ELECTRICAL OUTLET FOR PUBLIC ADDRESS MICROPHONE INPUT MOUNTED AT PROJECT SWITCH HEIGHT WITH A 3/4" CONDUIT STUB OUT TO OPEN CEILING

- 2" SPARE CONDUIT
- 2" CONDUIT TO CONTROL PAD
- 1" SPARE CONDUIT TO CONTROL PAD
- 3/4" CONDUIT (POWER) TO CONTROL PAD
- 1" CONDUIT TO MUSCO SPEAKERS
- 1" CONDUIT TO MUSCO SPEAKERS

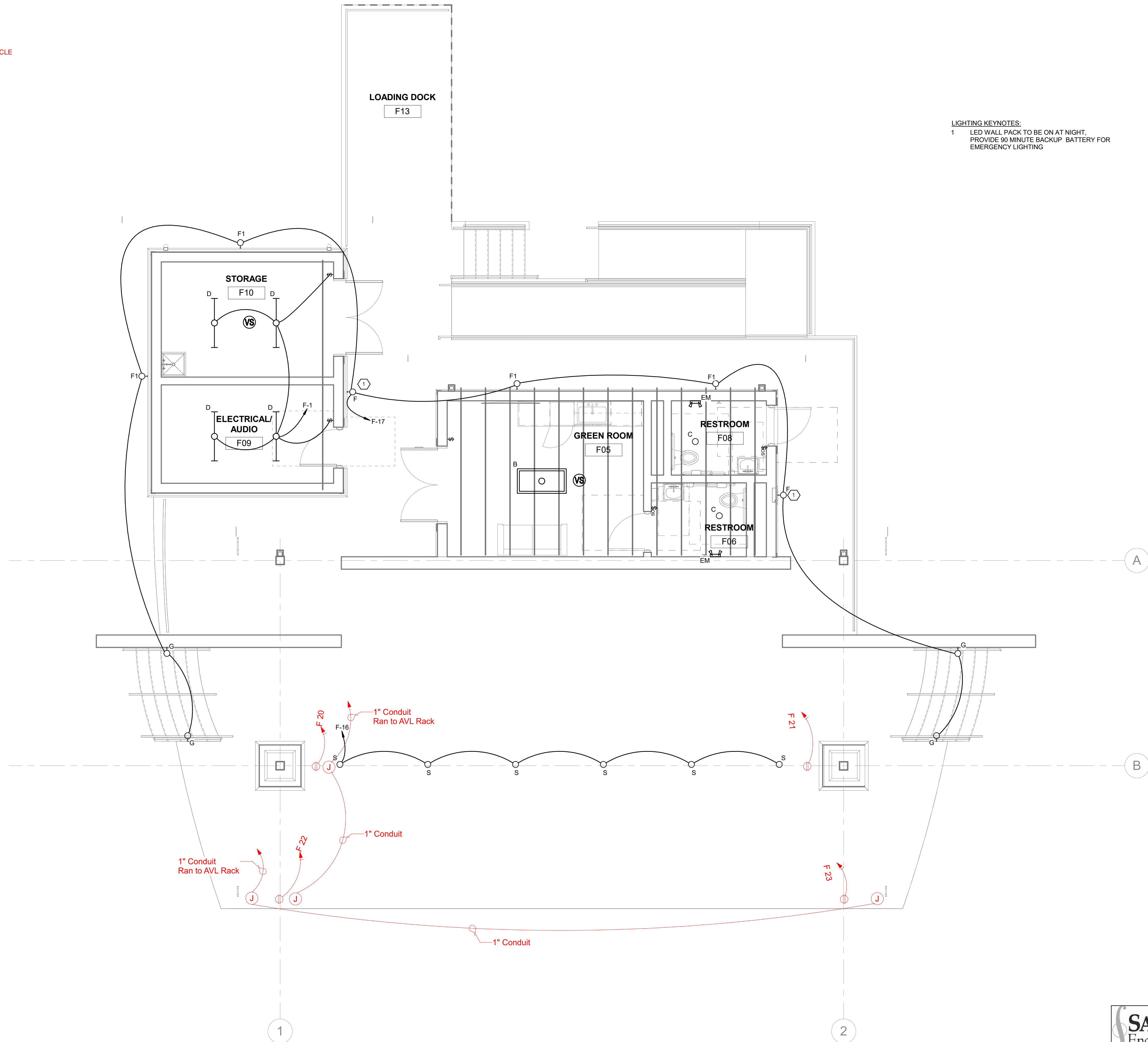


1 FLOOR PLAN - POWER
E1.1F 1/4" = 1'-0"

SAVANT
Engineering, LLC
5064 Roswell Road, Suite D-301
Sandy Springs GA 30342 770.319.7400
Project 21140 ©2022
COAF: PEF004211
EXPIRES: 6/30/2024

- AVL SYMBOLS KEY**
- Ⓜ CEILING WEATHERPROOF DUPLEX RECEPTACLE
 - Ⓝ CEILING JUNCTION BOX

- LIGHTING KEYNOTES:**
- 1 LED WALL PACK TO BE ON AT NIGHT. PROVIDE 90 MINUTE BACKUP BATTERY FOR EMERGENCY LIGHTING



GEORGIA

THE GROVE
BUILDING "F" - AMPITHEATER
1089 HWY 81, LOGANVILLE, GA 30052

PREPARED FOR:
WALTON COUNTY

LOGANVILLE

SUBMITTALS / REVISIONS

NO	DATE	DESCRIPTION

SHEET TITLE

FLOOR PLAN - LIGHTING - ELECTRICAL

PROJECT NO. DATE

21xxx SCALE

DRAWN BY **SCM** 1/4" = 1'-0"

CHECKED BY **SWL**

SHEET NO. SHEET OF 40

E2.1F

NOT FOR CONSTRUCTION

SAVANT
Engineering, LLC
5064 Roswell Road, Suite D-301
Sandy Springs GA 30342 770.319.7400
Project 22140 ©2022
COA#: PEF004211
EXPIRES: 6/30/2024

1 FLOOR PLAN - LIGHTING
E2.1F 1/4" = 1'-0"

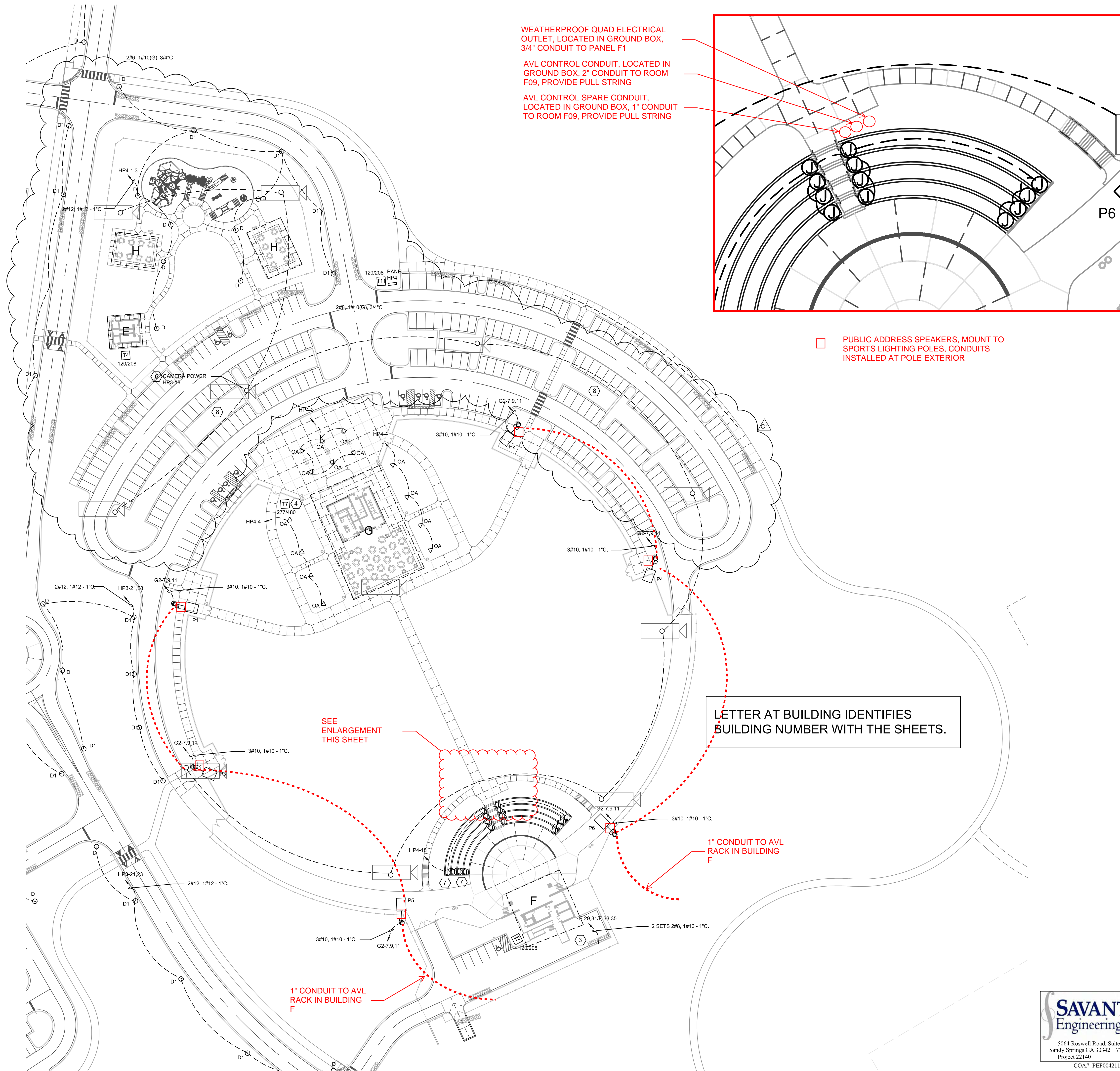
SUBMITTALS / REVISIONS

NO	DATE	DESCRIPTION
A4	04/28/24	ADDENDUM 4
C1	11/29/24	CONFORMED SET

CONFORMED SET

SHEET TITLE
PARTIAL LIGHTING SITE PLAN

PROJECT NO.	DATE
22010	11/25/2024
DRAWN BY	SCALE
SSH	1"=50'
CHECKED BY	SHEET NO.
SWL	4A
SHEET OF	OF
	40



1 PARTIAL LIGHTING SITE PLAN
ESP1C SCALE: 1' = 50'-0"

SAVANT
Engineering, LLC

5164 Roswell Road, Suite D-301
Sandy Springs GA 30342 770.319.7400
Project 22140 ©2022

COAH: PEF004211
EXPIRES: 6/30/2024