

**Walton County  
The Grove**

**Change Proposal #9  
Building J VE Permit Changes  
Rev I**

**General Contractor:**

**Reeves Young  
45 Peachtree Industrial Boulevard N.W.  
Sugar Hill, GA 30518  
770-271-1159**



November 22, 2024

Walton County, GA  
The Grove, a Walton County Parks &  
Recreation Facility

Attn: John Ward, County Manager  
Jeff Prine, Capital Project Manager –  
Ascension Program Management

**Change Proposal #9 – Building J (Maintenance) VE Permit Revisions Rev 1**

The below change proposal is for the cost associated with the design changes incorporated in the VE permit set for building J. These changes include additional HM openings, eyewash station, water heater, and storefront frame added. Please see below for further supporting documentation.


**UPDATE:** Per conversations with Jeff Prine of APM on 11.22.24, only one HM Opening will be added to the Maintenance building in lieu of what is shown on the permitted VE set. The pricing update is reflected below.

Description	Qty	Unit	Unit Price	Total
Lighting Changes	1	LS	\$12,651.72	\$12,651.72
Plumbing (Eyewash Station & WH-3)	1	LS	\$3,503.00	\$3,503.00
Added HM Frames and Doors	1	LS	\$3,790.00	\$3,790.00
Added ALM Frame	1	LS	Void	Void
<b>Total Subcontractor Cost</b>	1	LS		<b>\$19,944.72</b>
Payment & Performance Bond	0.597	%	\$119.07	\$119.07
General Liability Insurance	0.811%	%	\$161.75	\$161.75
Builders Risk Insurance	0.174%	%	\$34.70	\$34.70
RY Overhead and Profit	10	%	\$1,994.47	\$1,994.47
<b>TOTAL</b>				<b>\$22,254.72</b>

If you have any questions or require any additional information, please do not hesitate to contact us at (470) 725-0022 or via email at [iarnold@reevesyoung.com](mailto:iarnold@reevesyoung.com).

Sincerely,  
Reeves Young, LLC

Isaiah Arnold



Project Manager

45 Peachtree Industrial Blvd, Suite 200      770.271.1159  
Sugar Hill, GA 30518                              reevesyoung.com

## **Approval**

Lose Design (Architect of Record)      Signature: \_\_\_\_\_ Date: \_\_\_\_\_

Ascension PM (Capital Project Manager) Signature: **Thomas J. Prine**      Date: **11.25.2024**

Walton County      Signature: \_\_\_\_\_ Date: \_\_\_\_\_



November 12, 2024

Walton County, GA  
The Grove, a Walton County Parks & Recreation Facility

Attn: John Ward, County Manager  
Jeff Prine, Capital Project Manager – Ascension Program Management

**Change Proposal #9 – Building J (Maintenance) VE Permit Revisions**

The below change proposal is for the cost associated with the design changes incorporated in the VE permit set for building J. These changes include additional HM openings, eyewash station, water heater, and storefront frame added. Please see below for further supporting documentation.

Description	Qty	Unit	Unit Price	Total
Lighting Changes	1	LS	\$12,651.72	\$12,651.72
Plumbing (Eyewash Station & WH-3)	1	LS	\$3,503.00	\$3,503.00
Added HM Frames and Doors	1	LS	\$7,580.00	\$7,580.00
Added ALM Frame	1	LS	\$1,749.00	\$1,749.00
<b>Total Subcontractor Cost</b>	1	LS		<b>\$25,483.72</b>
Payment & Performance Bond	0.597	%	\$152.14	\$152.14
General Liability Insurance	0.811%	%	\$206.67	\$206.67
Builders Risk Insurance	0.174%	%	\$44.34	\$44.34
RY Overhead and Profit	10	%	\$2,548.37	\$2,548.37
<b>TOTAL</b>				<b>\$28,435.24</b>

If you have any questions or require any additional information, please do not hesitate to contact us at (470) 725-0022 or via email at [iarnold@reevesyoung.com](mailto:iarnold@reevesyoung.com).

Sincerely,  
Reeves Young, LLC

Isaiah Arnold

Project Manager

45 Peachtree Industrial Blvd, Suite 200  
Sugar Hill, GA 30518

770.271.1159  
reevesyoung.com

## **Approval**

Lose Design (Architect of Record)      Signature: \_\_\_\_\_ Date: \_\_\_\_\_

Ascension PM (Capital Project Manager) Signature: \_\_\_\_\_ Date: \_\_\_\_\_

Walton County      Signature: \_\_\_\_\_ Date: \_\_\_\_\_

**ES&C GA, Inc.**

1861 Trinity Creek Drive  
 Dacula, GA 30019 US  
 +13055278862  
 Jonathan@escfga.com

**Estimate**

ADDRESS  
 Reeves Young  
 45 Peachtree Industrial Blvd,  
 Sugar Hill, GA 30518,  
 United States of America

ESTIMATE 1053  
 DATE 09/25/2024

DATE	ACTIVITY	DESCRIPTION	QTY	RATE	AMOUNT
	Change Order	This change order pertains to the electrical changes made to Building J. Drawings dated 09.19.2024.	1	0.00	0.00
	Material	Misc. Material: ~ Conduit ~ Couplings ~ Connectors ~ Wire #12 ~ Boxes ~ Switch ~ Mud Rings ~ Straps ~ Screws ~ Wire Nuts	1	583.09	583.09
	Material	Lighting Fixtures: ~ EM (15) ~ EM1 (2) ~ Exit Signs (2) ~ D (3) ~ OS (1)	1	2,150.37	2,150.37
	Labor	Below is a cost breakout for Labor associated with the scope of work being performed. 3 electricians x 1 week each	150	57.46	8,619.00
	Tax	Tax Rate @ 6%	0.06	2,733.46	164.01
	Overhead/Profit	Overhead/Profit @ 10%	0.10	11,352.46	1,135.25

THIS IS AN ESTIMATE ONLY.  
 In order to proceed with this scope of work, ES&C GA, Inc. stipulates that our invoice must be signed alongside a change order directive signed by either the client or the general contractor.

**TOTAL****\$12,651.72**

Accepted By

Accepted Date

Thank You For Choosing ES&amp;C GA, INC.

Page 1 of 1



**Michael T. Meehan**

michael@meehanmechanicalinc.com

**GA Registrations:**

Class II Conditioned Air (non-restricted) CN210414

Class II Master Plumber (non-restricted) MP210322

Date: 10/2/2024

Isaiah Arnold  
Project Manager

Project: The Grove – Building J  
Change Order Request: Conformed Set Changes – Building J  
Scope Of Work: Addition of Eye Wash and WH-3

qty	Materials		
1	Eye Wash	Guardian G1814P	397.00
1	WH-3	Chronomite R-75L/208	540.00
1	Piping	Copper/PVC Fittings (1 lot)	225.00
1	*Mixing Valve	Guardian G6020 - ASSE 1071 Thermostatic mixing Valve	884.00
<b>8 hrs</b>	<b>Labor</b>	2 men, 4hrs @ \$125	1000.00
	Subtotal		3046.00
	OH&P	15%	457.00
	<b>TOTAL</b>		<b>3503.00</b>

\*The ASSE 1071 Mixing Valve offered above is required by code for emergency eyewashes. Unlike the standard ASSE 1070 mixing valves used for lavatories, the 1071 for tepid water emergency plumbing fixtures fails to cold to prevent scalding.

Labor and materials listed above include slab work already in place.

Let me know if you have any questions.

Respectfully Submitted,  
Michael Meehan

Performance Construction Services, LLC  
499 Tuggle Greer Drive  
Buford, GA 30518  
O. 770-217-7545  
F. 770-217-7357

**CHANGE ORDER REQUEST #5**

**Date:** October 2, 2024  
**Job Name:** The Grove Park  
**Job Location:** 1089 Highway 81, GA 30052

**We propose the following changes in scope of work:**

- Additional Doors, Frames, & Hardware:
  - Building J – HM 14GA Galvanized Frame & Door w/ Finish Hardware
    - J08A
    - J10C
- 10% Mark-up

WC To pay for one additional HM opening. WC to clarify which opening is to remain.

**We propose the above changes in the scope of work of the added sum of:**  
Seven Thousand Five Hundred Eighty Dollars and No Cents ~~(\$7,580.00)~~.

**Payment as follows:**  
**ACCEPTANCE OF CHANGE ORDER**

\_\_\_\_\_

**Date Of Acceptance**

\_\_\_\_\_

**PO #**

\_\_\_\_\_



# Change Order



Clearvue Glass and Mirror Co.

Printed: Oct 9, 2024 1900 W Oak Cir Ste B, Marietta, GA 30062-2248

Phone: 404-524-5616


Owner Info **Isaiah Arnold**  
45 Peachtree Industrial Blvd Sugar Hill, GA 30518  
Cell: +14707250022

## 27-24 The Grove

Job Info 1089 HWY 81  
Loganville, GA 30052  
Change Order ID

27-24-CC-0001

CO ID	Created / Approved	Date	Price
27-24-CC-0001	Created:	Oct 9, 2024	\$1,749.00

### Description

Added Aluminum Frame at Building J

Items	Cost Types	Description	Qty / Unit	Unit Price	Price
Added Frame Building J 1010 - Aluminum Systems			1	\$1,749.00	\$ 1,749.00

Status	Signature	Date
--------	-----------	------

Approved by: \_\_\_\_\_

### Approval Comments

Please Note: A signature of Approval OR Electronic Acceptance is required before change order is effective. This change order becomes part of the existing contract.

**TOTAL AMOUNT OF CHANGE ORDER: \$1,749.00**





SUBMITTALS / REVISIONS

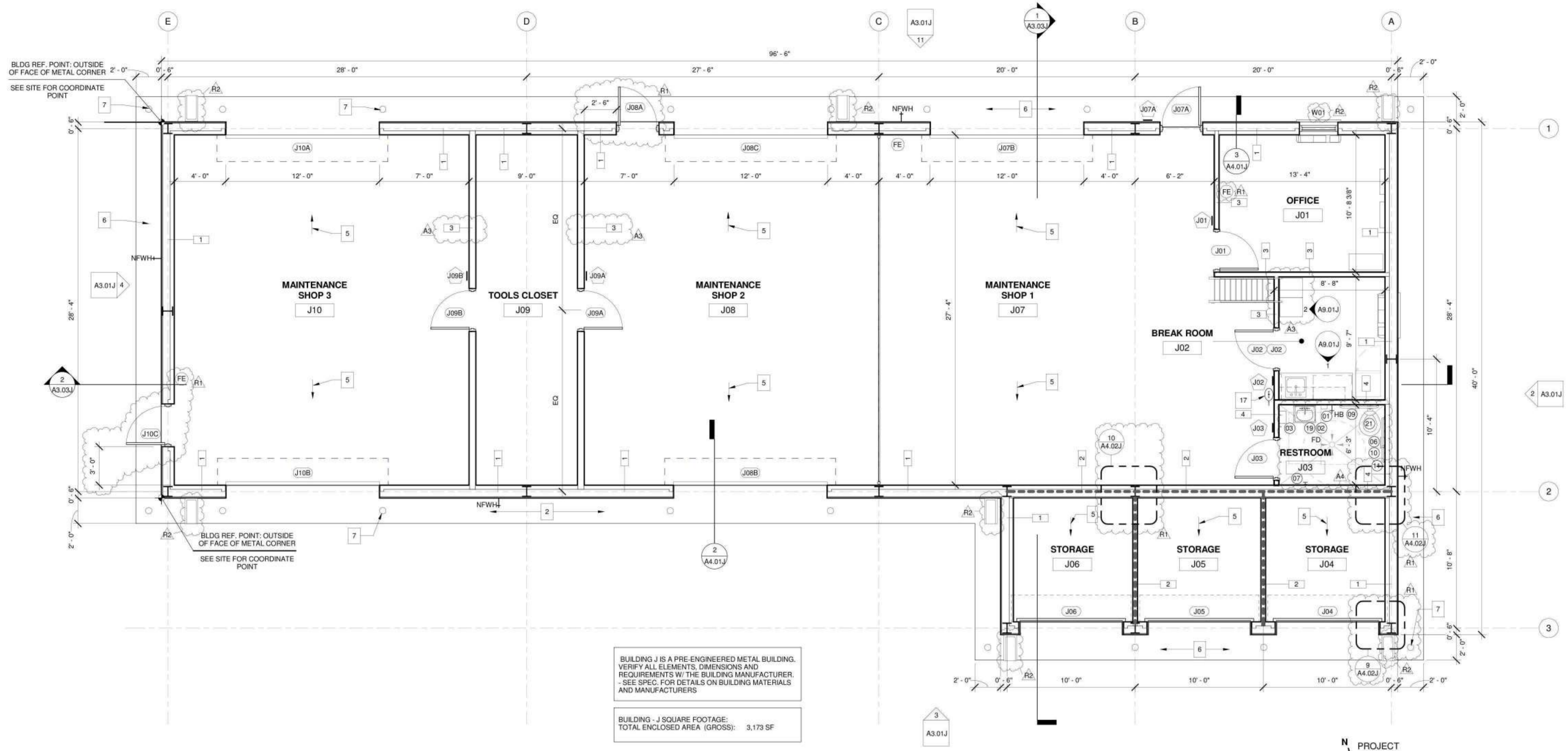
NO.	DATE	DESCRIPTION
A3	04/21/2023	Addendum 3
A4	04/28/2023	Addendum 4
R1	06/13/2023	Permit Revisions
R2	7/15/2024	VE Changes

CONFORMED SET

SHEET TITLE  
**MAINTENANCE FACILITY FLOOR PLAN**

PROJECT NO. <b>22010</b>	DATE <b>09/19/24</b>
DRAWN BY <b>STAFF</b>	SCALE <b>1/4" = 1'-0"</b>
CHECKED BY <b>NR</b>	
SHEET NO.	

**A2.01J**



BUILDING J IS A PRE-ENGINEERED METAL BUILDING. VERIFY ALL ELEMENTS, DIMENSIONS AND REQUIREMENTS W/ THE BUILDING MANUFACTURER. - SEE SPEC. FOR DETAILS ON BUILDING MATERIALS AND MANUFACTURERS

BUILDING - J SQUARE FOOTAGE:  
TOTAL ENCLOSED AREA (GROSS): 3,173 SF

**1** MAINTENANCE FACILITY FLOOR PLAN  
A2.01J 1/4" = 1'-0"

**PLAN GENERAL NOTES**

- SEE ENLARGED PLAN AND DETAILS FOR ADDITIONAL INFORMATION.
- ALL FLOOR TO SLOPE AT 1/8" PER FOOT, UNO, COORDINATE W/ PLUMBING & STRUCTURAL.
- COORDINATE ALL CASEWORK AND OFGI ITEMS W/ OWNER.
- ALL ELECTRIC AND PLUMBING DEVICES ON EXT. WALLS TO BE "CENTERED" ON CMU VERTICALLY AND HORIZONTALLY (W.P., OUTLETS, HOSE BIBBS, ETC).
- SEAL ALL PENETRATIONS OF CONDUIT, MECHANICAL DUCT WORK, PIPING, IN ALL SUBSTRATES, INTERIOR AND EXTERIOR WALLS, CEILINGS FLOORS
- ARCHITECTURAL BUILDING FFE, LISTED AS 0'-0", COORDINATE ACTUAL W/ CIVIL.
- RUN ALL DOWN SPOUTS TO UNDERGROUND, COORDINATE W/ CIVIL, U.N.O.
- ALL EXPOSED STEEL TO BE SHOP PRIMED AND FIELD PAINTED.
- NOT USED
- INSTALL NECESSARY BLOCKING BEHIND DESIGNATED LOCATION OF SIGNAGE.
- HOSE-BIBB WITH LOCKABLE BOX, PROVIDE FREEZE-PROOF TYPE FOR EXTERIOR LOCATION, SEE PLUMBING.
- CAULK ALL DOOR & WINDOW FRAMES AT THE JOINT BETWEEN THE FRAME & THE ADJACENT SUBSTRATE.
- CAULK ALL JOINTS BETWEEN FIXED CASEWORK, PLUMBING FIXTURES, & BACKSLASH TO WALL TRANSITION JOINT.
- COORDINATE ANY EXPANSION/CONTROL/CONSTRUCTION JOINTS WITH EXISTING CONSTRUCTION. VERIFY W/ ARCH. AND STRUC. FOR ANY DISCREPANCIES THAT OCCUR DURING THE CONSTRUCTION PHASE.
- COORDINATE BUILDING SITE ORIENTATION/LAYOUT WITH CIVIL.
- FOR CONCRETE PAVING SEE SITE/CIVIL
- SEE SERIES SEE STRUCTURAL FOR ALL SLAB JOINT DETAILS.
- SEE STRUCTURAL FOR ALL FOOTING & SLAB REQUIREMENTS.
- SEE SHEET A3 SERIES FOR EXTERIOR ELEVATIONS AND BUILDING SECTIONS.
- SEE SHEET A4 SERIES FOR WALL SECTIONS & DETAILS.
- SEE SHEET A6 SERIES FOR RCP.
- SEE SHEET A7 SERIES FOR ROOF PLANS.
- SEE SHEET A8 SERIES FOR DOOR SCHEDULE & DETAILS.
- SEE SHEET A8 SERIES FOR WINDOW SCHEDULE & DETAILS.
- SEE SHEET A9 SERIES FOR ARCHITECTURAL WOODWORK, ROOM FINISH SCHEDULE AND FINISH LEGEND
- AS REQUIRED PROVIDE AND INSTALL KNOXBOX AT BUILDING ENTRANCE PER LOCAL CODE OFFICIAL DIRECTIONS AND REQUIREMENTS. MODEL OF KNOXBOX TO BE APPROVED BY LOCAL CODE OFFICIALS. KNOXBOX TO BE MODEL 3200 - 10 KEY CAPACITY - COLOR BLACK. VERIFY INSTALLATION LOCATION W/ ARCH. RECESSED MOUNTED ON BUILDING WITH FLASHING TO DRAIN. - PROVIDE BLOCKING BEHIND KNOXBOX AS REQUIRED FOR MOUNTING PER MANUFACTURER.
- MAIN DISCONNECT, SEE ELECTRICAL
- KWH METER, SEE ELECTRICAL
- ELECTRICAL PANEL, SEE ELECTRICAL
- SEE A0.02J FOR RESTROOM ACCESSORIES & PLUMBING FIXTURES LEGEND. SEE PLUMBING FOR FIXTURE SPEC.

**WALL TYPE**

- EXTERIOR WALL:  
- PREFINISH GALV. STEEL METAL WALL PANEL SYSTEM, BY PEMB.  
- STEEL FRAMING SYSTEM, BY PEMB.  
- VINYL SCRIM WALL INSULATION. SEE SHEET A4.1J FOR DETAILS.  
- 5/8" PLYWOOD UP TO 8'-0" AFF ON PEMB GIRT FRAMING SYSTEM.  
- PROVIDE 5/8" GYP. BD. AT INTERIOR AT OFFICE, BREAKROOM, & RESTROOM. - SEE INTERIOR PARTITION FOR MORE INFORMATION.
  - INTERIOR PARTITION AT STORAGE (1 HR RATED):  
- 2x4 WOOD FRAMING AT 16" OC  
- 5/8" P.T. PLYWOOD PANEL OVER 5/8" TYPE X GYP BD. AT EACH SIDES  
- WALL TO EXTEND TO BOT. OF ROOF STRUC.  
- PROVIDE 3/4" DEFLECTION AT PARTITION HEAD  
- SEE A4.01J / A4.02J FOR DETAILS.
  - INTERIOR PARTITION:  
- 2x4 WOOD FRAMING AT 16" OC  
- W/ 5/8" GYP. BD. AT EXPOSED SIDES  
- WALL TO EXTEND 8'-0" AFF  
- SEE A4.01J / A4.02J FOR DETAILS.
  - INTERIOR PARTITION AT WET AREA:  
- 2x4 WOOD FRAMING AT 16" OC  
- W/ 5/8" MOISTURE RESISTANT GYP. BD. PANEL AT EXPOSED SIDES  
- PROVIDE SOUND BATT INSULATION AROUND RESTROOM.  
- WALL TO EXTEND 8'-0" AFF  
- SEE A4.01J / A4.02J FOR DETAILS.
- \* WRAP CERAMIC TILE AROUND RESTROOM UP TO 6'-0"
- 1 HR U.L. WALL ASSEMBLY NO. U305, SEE SHEET A0.09J & A0.10J.

**PLAN KEYNOTES**

- SLOPE FLOOR SLAB TOWARD OH DOOR AT 1/8" PER FT. AS INDICATED- SEE STRUC.
- CONCRETE SLAB, BROOM FINISH - SEE STRUC.
- CONCRETE FILLED STEEL BOLLARD, TYP. SEE 3 / A4.02J
- SLOPE FLOOR AT 1/2" PER FT. AT ALL CORNER CONDITION AND COLUMN LOCATIONS
- WALL LOUVER FOR MECHANICAL SYSTEM - SEE MECH.
- THRU-WALL PTAC SYSTEM, SEE MECH.
- THRU-WALL EXHAUST FAN, SEE MECH.
- CONC. PAVING, TYP. - SEE SITE / CIVIL
- SUSPENDED UNIT HEATER, TYP. - SEE MECH.
- HOSE-BIBB WITH LOCKABLE BOX, PROVIDE FREEZE-PROOF TYPE - SEE PLUMBING
- 2" W X 1/2" H WITH MARBLE ADA TRANSITION THRESHOLD AT DOOR W/ 1/4" BEVELED EDGE
- ROOF EDGE, TYP. - SEE ROOF PLAN
- EMERGENCY EYE-WASH STATION - SEE PLUMB.
- BASE CABINET W/ PLAS, LAM, FIN. & SINK - SEE A9.01J
- TANKLESS WATER HEATER UNIT. PLACE ON A STAND. SEE MECH / PLUMB.
- REDUCED PRESSURE BACKFLOW PREVENTION UNIT - SEE PLUMBING
- ELECTRICAL PANELS, TERMINAL BOARDS AND CONTROLS - SEE ELECT.

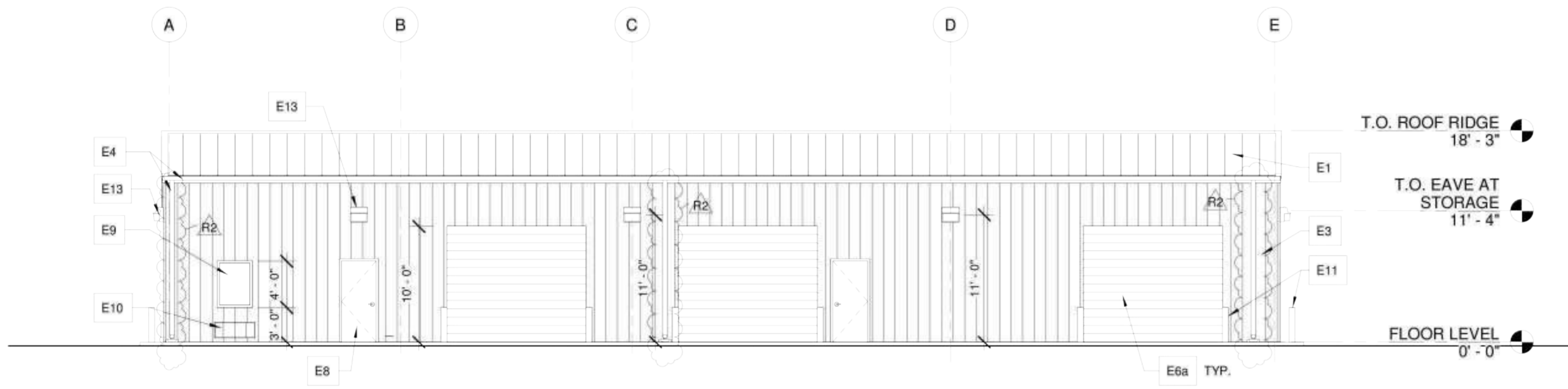
**SIGNAGE SCHEDULE**

SIGN NUMBER	DOOR NUMBER	ROOM NUMBER	ROOM NAME	CHARACTER LINE 1	CHARACTER LINE 2	NOTES
J01	J01	J01	OFFICE	OFFICE		1, 2, 3, 5
J02	J02	J02	BREAK ROOM	BREAK ROOM		1, 2, 3, 5
J03	J03	J03	RESTROOM	RESTROOM		1, 2, 3, 4, 5
J07A	J07A	J07	MAINTENANCE SHOP 1	MAINTENANCE	SHOP	1, 2, 3, 5
J09A	J09A	J09	TOOLS CLOSET	TOOLS	CLOSET	1, 2, 3, 5

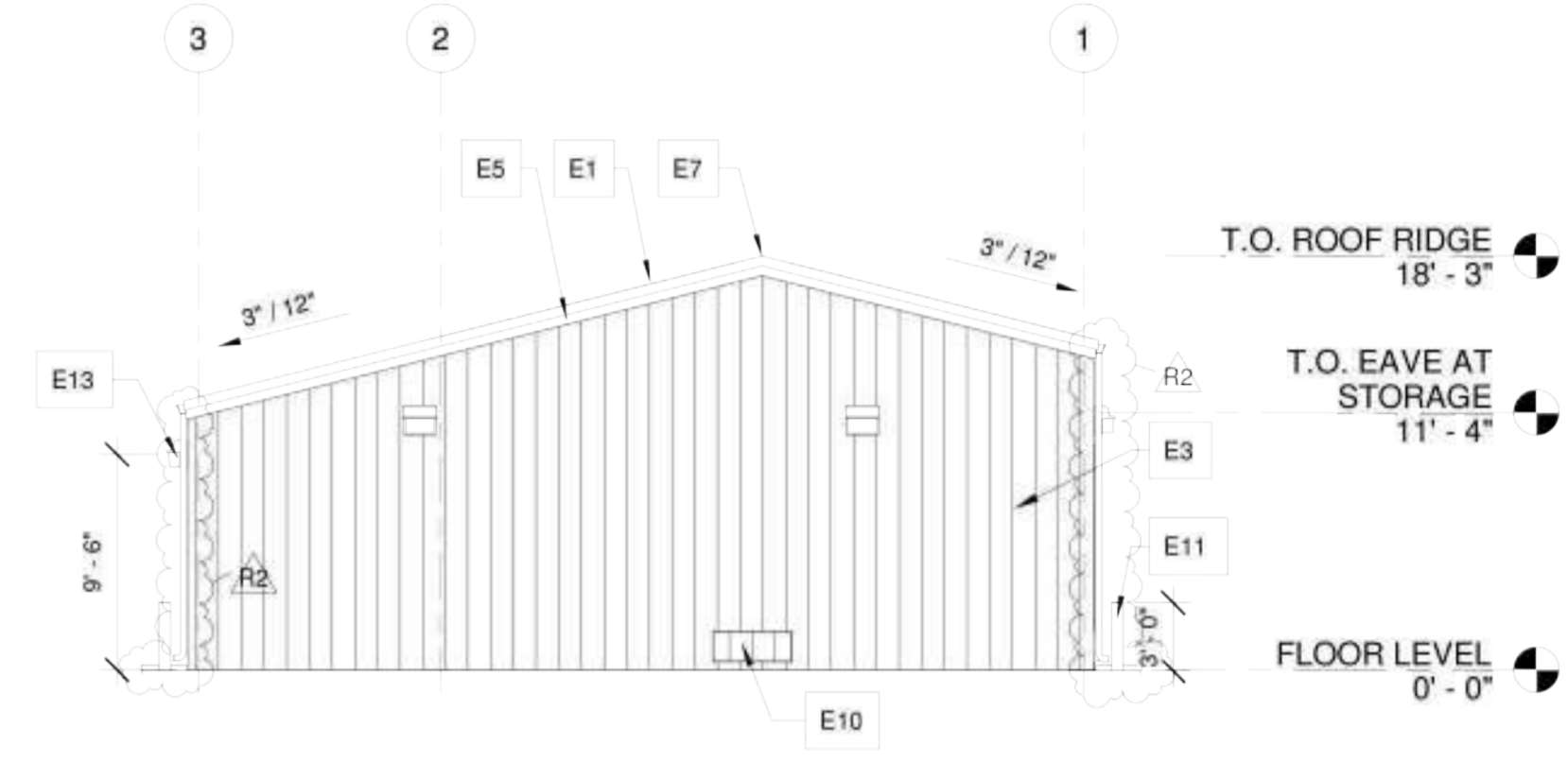
NOTES:

- PROVIDE SOLID BLOCKING BEHIND DESIGNATED LOCATION OF SIGNAGE
- INSTALL SIGNAGE AT WALL BESIDE DOOR AT LATCH SIDE FOR SINGLE DOOR, INSTALL SIGNAGE AT SECONDARY DOOR LEAF FOR DOUBLE DOOR. SIGNAGE MUST COMPLY WITH ALL ADA REGULATIONS INCLUDING BUT NOT LIMITED TO: 3.1. HEIGHT ABOVE FINISH FLOOR (SEE DOOR SCHEDULE SHEET) 3.2. CHARACTERS 3.3. PICTOGRAMS 3.4. BRAILLE 3.5. FINISH
- PROVIDE UNIVERSAL PICTOGRAM FIGURES FOR RESTROOM 4.1. MAN FIGURE AT MEN'S RESTROOMS 4.2. WOMAN FIGURE AT WOMEN'S RESTROOMS 4.3. MAN AND WOMAN FIGURE AT FAMILY UNISEX RESTROOMS 4.4. WHEELCHAIR / HANDICAP FIGURE AT ALL RESTROOMS 4.5. SHOWER SYMBOL AT ALL RESTROOMS WITH SHOWER
- PROVIDE ALL MANUFACTURER DRAWINGS FOR APPROVAL PRIOR TO INSTALL.

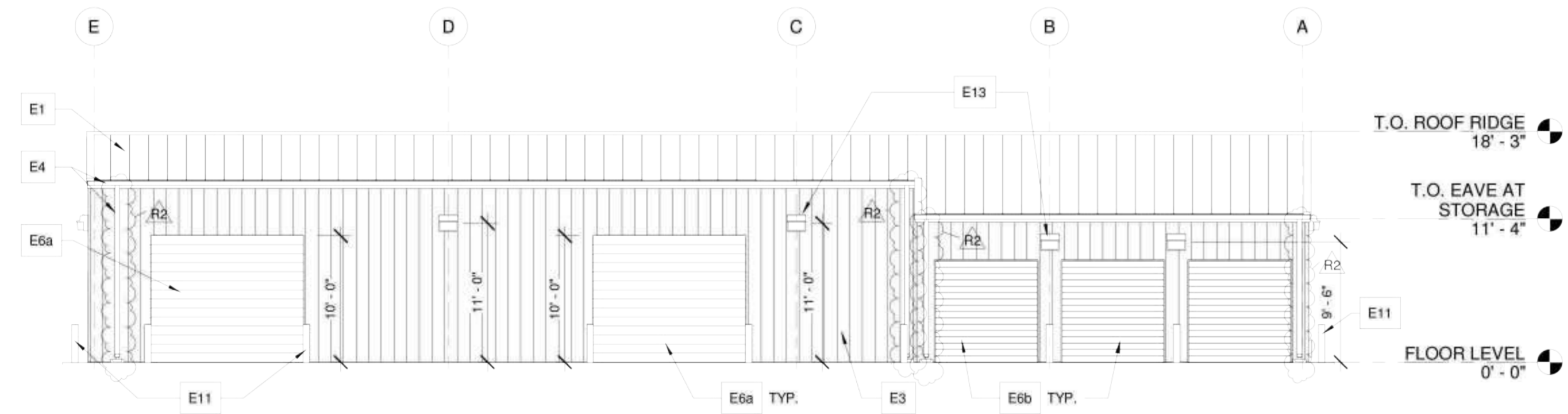
J00 SIGNAGE SYMBOL



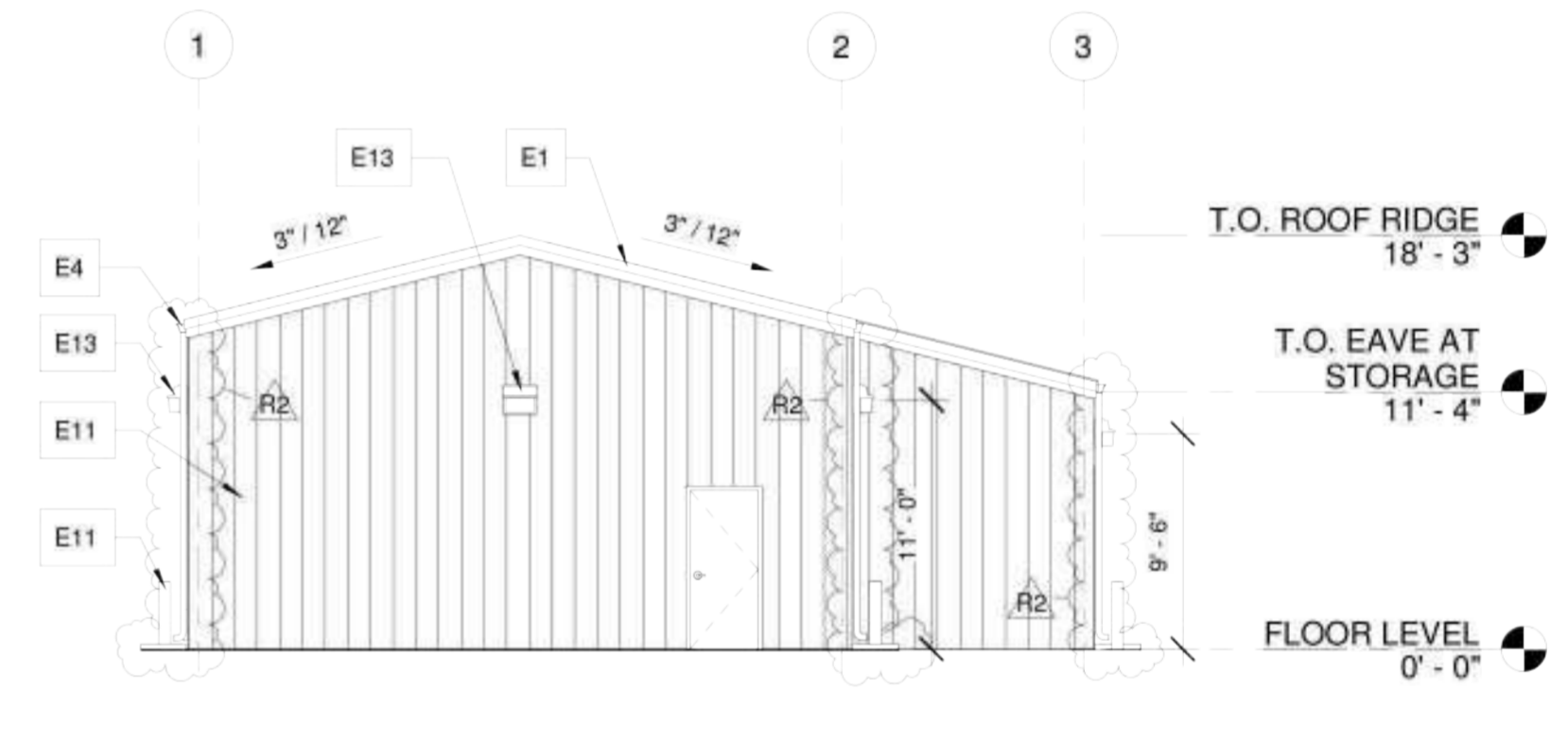
**11** MAINTENANCE FACILITY NORTH ELEVATION  
A3.01J 1/8" = 1'-0"



**2** MAINTENANCE FACILITY EAST ELEVATION  
A3.01J 1/8" = 1'-0"



**3** MAINTENANCE FACILITY SOUTH ELEVATION  
A3.01J 1/8" = 1'-0"



**4** MAINTENANCE FACILITY WEST ELEVATION  
A3.01J 1/8" = 1'-0"

GEORGIA

THE GROVE  
BUILDING "J" - MAINTENANCE FACILITY  
1089 HWY 81, LOGANVILLE, GA 30052  
PREPARED FOR:  
WALTON COUNTY

LOGANVILLE

SUBMITTALS / REVISIONS		
NO.	DATE	DESCRIPTION
A3	04/21/2023	Addendum 3
R2	7/15/2024	VE Changes

**GENERAL NOTES**

- ARCHITECTURAL BUILDING FFE LISTED AS 0'-0", COORDINATE ACTUAL W/ CIVIL.
- ELEVATION MARKS TO BE VERIFIED IN FIELD WITH MATERIAL AND ASSEMBLY DIMENSIONS.
- DIMENSIONS ARE FROM FINISH FLOOR. (U.N.O.)
- SEE STRUCTURE FOR ALL FOOTING & SLAB REQUIREMENTS.
- SEE SHEET A4 SERIES FOR WALL SECTIONS & DETAILS.
- SEE SHEET A6 SERIES FOR RCP.
- SEE SHEET A7 SERIES FOR ROOF PLANS.
- SEE SHEET A8 SERIES FOR DOOR SCHEDULE & DETAILS.
- SEE SHEET A8 SERIES FOR WINDOW SCHEDULE & DETAILS.
- SEE SHEET A9 SERIES FOR ARCHITECTURAL WOODWORK AND FINISH LEGEND.

**ELEVATION KEYNOTES**

- E1 PEMB. PRE-FINISHED GALV. METAL ROOFING, 3/12 SLOPE, TYP.
- E2 PRE-FINISHED ALUMINUM DRAINABLE LOUVER W/ INSECT SCREEN, TYP.
- E3 PEMB. PRE-FINISHED GALV. METAL WALL PANELS, TYP.
- E4 5X5 PRE-FIN. ALUM GUTTER & 4X4 DOWNSPOUT SYSTEM, TYP.
- E5 PRE-FINISHED METAL RAKE TRIM, TYP. R2
- E6a PRE-FINISHED GALV. STEEL OVERHEAD COILING SERVICE DOOR. - SEE DOOR SCHEDULE
- E6b PRE-FINISHED GALV. STEEL SECTIONAL SERVICE DOOR. - SEE DOOR SCHEDULE
- E7 PRE-FINISHED GRAVITY VENTILATOR AT ROOF, TYP. - SEE MECH
- E8 HOLLOW METAL DOOR AND FRAME, PAINTED, TYP. - SEE DOOR SCHEDULE
- E9 WINDOW & HOLLOW METAL WINDOW FRAME PAINTED, TYP. - SEE WINDOW SCHEDULE

- E10 THRU WALL PTAC UNIT. COORDINATE WITH MECH FOR OPENING DIMENSIONS
- E11 STEEL BOLLARD, CONCRETE FILLED, PAINTED, TYP. - SEE 3 / A4.02J
- E12 STEEL COLUMN AND BEAM FRAME, PAINTED. PROVIDE ZINC RICH EPOXY COAT W/ ACRYLIC URETHANE TOP COAT, TYP.
- E13 EXTERIOR WALL MOUNTED LIGHT FIXT. TYP. - SEE ELEC.
- E14 BUILDING IDENTIFICATION SIGN. VERIFY LOCATION WITH OWNER. IMAGE / VERBIAGE TO BE PROVIDED BY OWNER

**FINISH NOTES**

- NUMBER DENOTES COLOR
- "E" DENOTES EPOXY
- "X" DENOTES EXTERIOR
- SEE SPECS FOR PRIMER AND FINISH STYLES
- SEE FINISH LEGEND

**COLOR SCHEDULE NOTES**

- SUBMIT SPECIFIED COLORS FOR REVIEW.
- SUBMIT MANUFACTURER'S STANDARD COLORS FOR REVIEW AND SELECTION FOR METAL APPLICATIONS.

**EXTERIOR FINISH SCHEDULE**

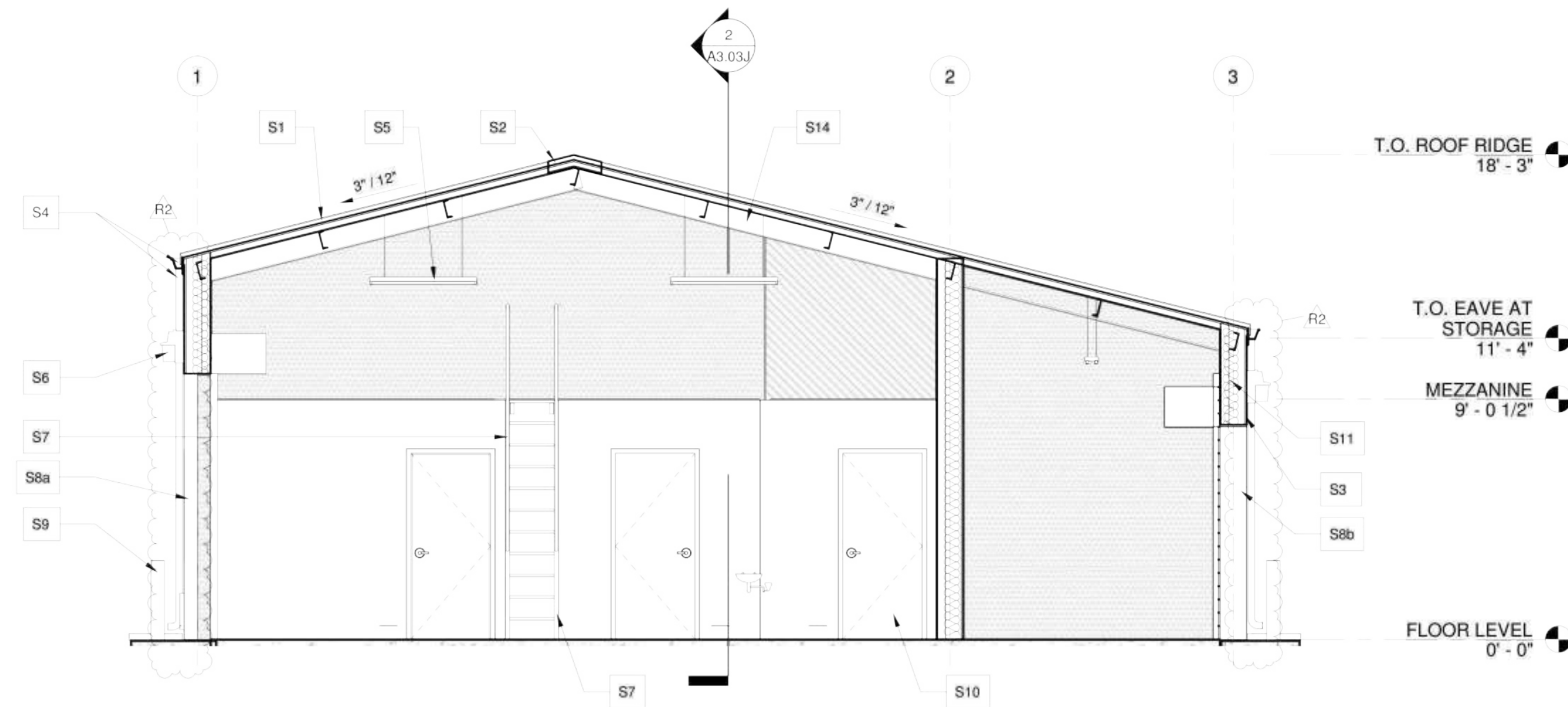
ITEM NAME	MATERIAL	FINISH
BEAMS & COLUMNS	STEEL	PRE-FINISHED, TO MATCH PNT - TBD
BOLLARDS	GROUTED STEEL	PNT-6
DOORS & DOOR FRAMES	HOLLOW METAL	PNT-6
GUTTER SYSTEM	PRE-FINISHED METAL	MTL-1
OVERHEAD DOORS	STEEL	PRE-FINISHED, ARCH TO SELECT
ROOF, RIDGE VENT, CAPS	PRE-FINISHED METAL	MTL-1
TRIM	PRE-FINISHED METAL	MTL-1
WALL PANELS: EXTERIOR METAL + 2X4 + 1/2" PLYWOOD	PRE-FINISHED METAL	MTL-2
WINDOW FRAME	ALUMINUM	PRE-FINISHED, CLEAR ANODIZED

CONFORMED SET

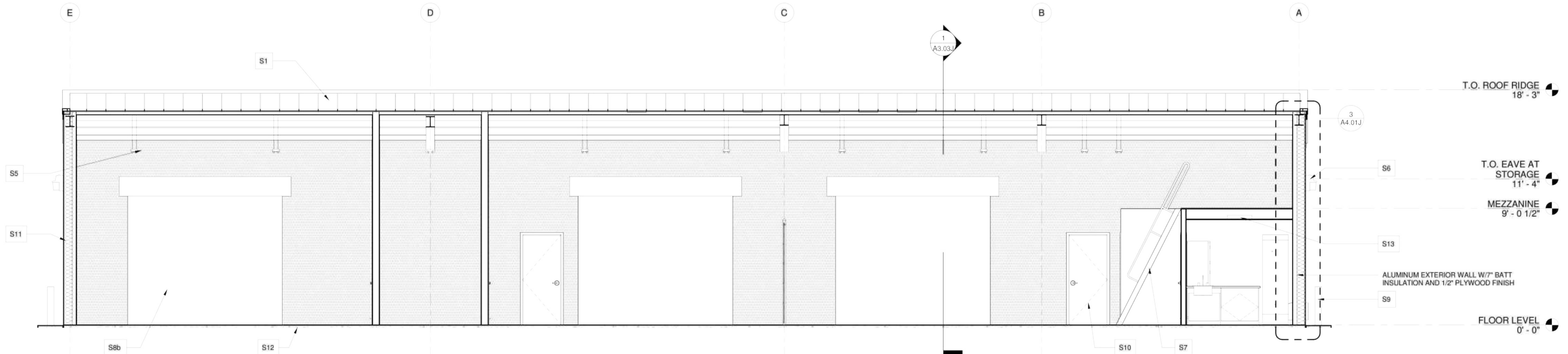
SHEET TITLE  
**MAINTENANCE FACILITY EXTERIOR ELEVATIONS**

PROJECT NO. <b>22010</b>	DATE <b>09/19/24</b>
DRAWN BY <b>STAFF</b>	SCALE <b>As indicated</b>
CHECKED BY <b>NR</b>	
SHEET NO.	

**A3.01J**



**1** MAINTENANCE BUILDING SECTION 1  
A3.03J 1/4" = 1'-0"



**2** MAINTENANCE BUILDING SECTION 2  
A3.03J 1/4" = 1'-0"

**GENERAL NOTES**

1. ARCHITECTURAL BUILDING FFE. LISTED AS 0'-0", COORDINATE ACTUAL W/ CIVIL.
2. ELEVATION MARKS TO BE VERIFIED IN FIELD WITH MATERIAL AND ASSEMBLY DIMENSIONS.
3. DIMENSIONS ARE FROM FINISH FLOOR. (U.N.O.)
4. SEE STRUCTURE FOR ALL FOOTING & SLAB REQUIREMENTS.
5. SEE SHEET A4 SERIES FOR WALL SECTIONS & DETAILS.
6. SEE SHEET A6 SERIES FOR RCP.
7. SEE SHEET A7 SERIES FOR ROOF PLANS.
8. SEE SHEET A8 SERIES FOR DOOR SCHEDULE & DETAILS.
9. SEE SHEET A8 SERIES FOR WINDOW SCHEDULE & DETAILS.
10. SEE SHEET A9 SERIES FOR ARCHITECTURAL WOODWORK AND FINISH LEGEND.

**SECTION KEYNOTES**

S1	PEMB. PRE-FINISHED GALV. METAL ROOFING, 3/12 SLOPE, TYP.	S10	SINGLE WOOD DOOR AND FRAME, PAINTED, TYP. - SEE MECH.
S2	METAL ROOF CAP	S11	W/7" BATT INSULATION
S3	PEMB. PRE-FINISHED GALV. METAL WALL PANELS, TYP.	S12	CONCRETE SLAB, BROOM FINISH - SEE STRUC
S4	5X5 PRE-FIN. ALUM GUTTER & 4X4 DOWNSPOUT SYSTEM, TYP. R2	S13	RECESSED LIGHT - SEE ELEC.
S5	LINEAR HANGING LIGHTS, TYP.	S14	STEEL COLUMN AND BEAM FRAME, PAINTED. PROVIDE ZINC RICH EPOXY COAT W/ ACRYLIC URETHANE TOP COAT, TYP.
S6	EXTERIOR WALL PACK LIGHT - SEE ELECT.		
S7	METAL SHIP LADDER		
S8a	PRE-FINISHED GALV. STEEL OVERHEAD COILING SERVICE DOOR. - SEE DOOR SCHEDULE		
S8b	PRE-FINISHED GALV. STEEL SECTIONAL SERVICE DOOR. - SEE DOOR SCHEDULE		
S9	STEEL BOLLARD, CONCRETE FILLED, PAINTED, TYP. - SEE 3/A4.02J		

GEORGIA

**THE GROVE**  
**BUILDING "J" - MAINTENANCE FACILITY**  
1089 HWY 81, LOGANVILLE, GA 30052  
PREPARED FOR:  
WALTON COUNTY

LOGANVILLE

SUBMITTALS / REVISIONS		
NO	DATE	DESCRIPTION
A3	04/21/2023	Addendum 3
R2	7/15/2024	VE Changes

CONFORMED SET

SHEET TITLE  
**MAINTENANCE BUILDING SECTIONS**

PROJECT NO	DATE
22010	09/19/24
DRAWN BY	SCALE
STAFF	As indicated
CHECKED BY	
NR	
SHEET NO	

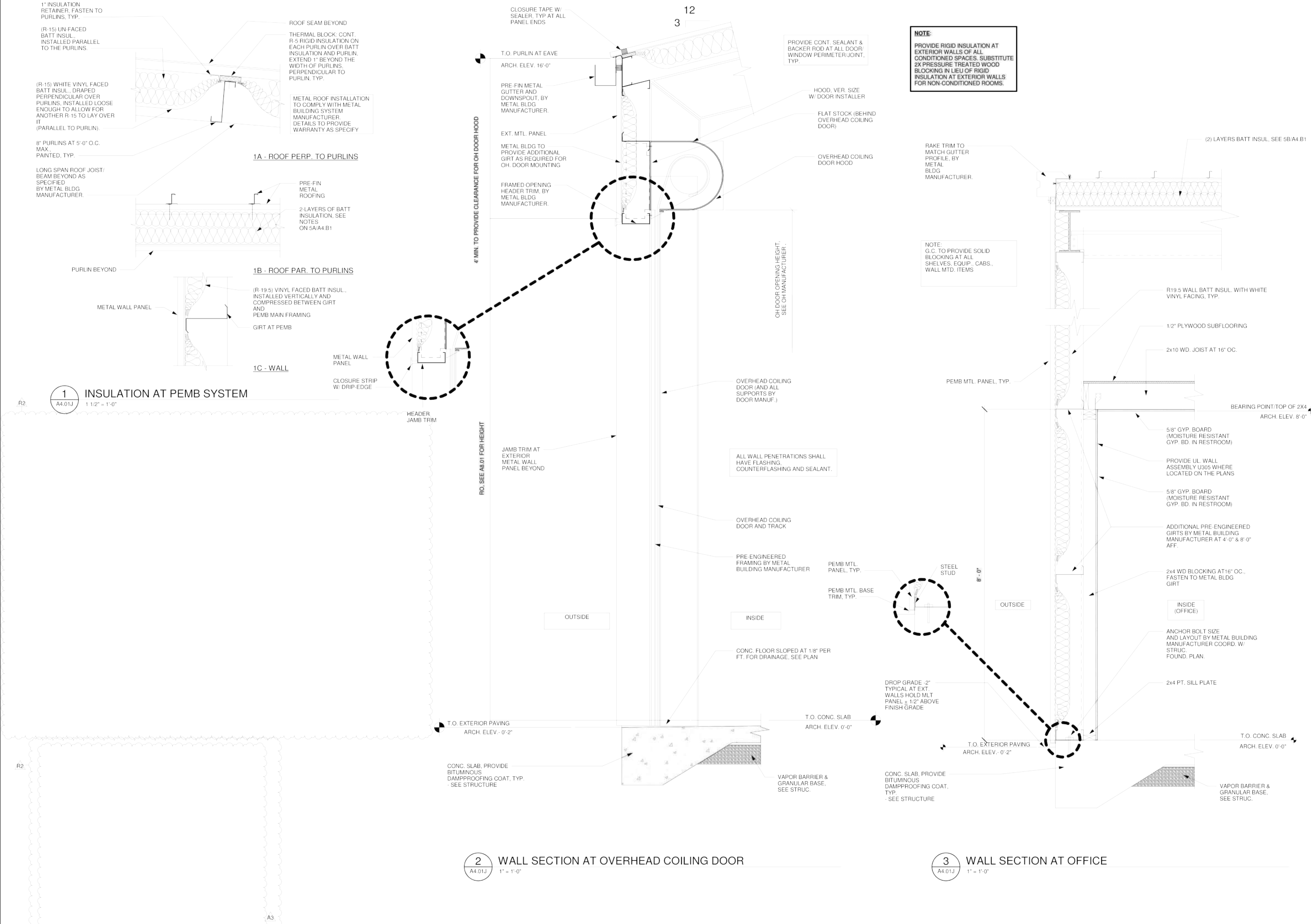
**A3.03J**



SUBMITTALS / REVISIONS		
NO.	DATE	DESCRIPTION
A3	04/21/2023	Adendum 3
R2	7/15/2024	VE Changes

<b>CONFORMED SET</b>	
SHEET TITLE	
<b>WALL SECTIONS &amp; DETAILS</b>	

PROJECT NO. <b>22010</b>	DATE <b>09/19/24</b>
DRAWN BY <b>Author</b>	SCALE <b>As indicated</b>
CHECKED BY <b>Checker</b>	SHEET NO.



A3

**DOOR SCHEDULE**

DOOR NUMBER	ROOM NAME	ROOM NUMBER	TYPE	SIZE			FRAME			FIRE RATING	HEAD DETAIL	JAMB DETAIL	SILL DETAIL	HARDWARE SET	DOOR NOTES		
				WIDTH	HEIGHT	THICKNESS	MAT.	FIN.	TYPE							MAT.	FIN.
J01	OFFICE	J01	DA	3'-0"	7'-0"	0'-1 3/4"	H.M.	PNT.	FA	H.M.	PNT-3	-	1/A8.01J	2/A8.01J	3/A8.01J	ND80TD	1, 2, 3, 4, 6
J02	BREAK ROOM	J02	DA	3'-0"	7'-0"	0'-1 3/4"	H.M.	PNT.	FA	H.M.	PNT-3	-	1/A8.01J	2/A8.01J	3/A8.01J	ND10	1, 4, 5
J03	RESTROOM	J03	DA	3'-0"	7'-0"	0'-1 3/4"	H.M.	PNT.	FA	H.M.	PNT-3	-	1/A8.01J	2/A8.01J	3/A8.01J	ND40	1, 4, 5
J04	STORAGE	J04	DC	8'-0"	8'-0"	0'-2"	STL.	PNT.	FB	STL.	PNT.	-	-	-	-	MFR. PROVIDED	1, 2, 8
J05	STORAGE	J05	DC	8'-0"	8'-0"	0'-2"	STL.	PNT.	FB	STL.	PNT.	-	-	-	-	MFR. PROVIDED	1, 2, 8
J06	STORAGE	J06	DC	8'-0"	8'-0"	0'-2"	STL.	PNT.	FB	STL.	PNT.	-	-	-	-	MFR. PROVIDED	1, 2, 8
J07A	MAINTENANCE SHOP 1	J07	DA	3'-0"	7'-0"	0'-1 3/4"	H.M.	PNT.	FA	H.M.	PNT-3	-	1/A8.01J	2/A8.01J	3/A8.01J	ND80TD	1, 2, 3, 4, 6
J07B	MAINTENANCE SHOP 1	J07	DB	12'-0"	10'-0"	0'-3"	STL.	FF	FC	STL	FF	-	-	-	-	MFR. PROVIDED	1, 2, 8
J08A	MAINTENANCE SHOP 2	J08	DA	3'-0"	7'-0"	0'-1 3/4"	H.M.	PNT.	FA	H.M.	PNT-3	-	1/A8.01J	2/A8.01J	3/A8.01J	ND80TD	1, 2, 3, 4, 6
J08B	MAINTENANCE SHOP 2	J08	DB	12'-0"	10'-0"	0'-3"	STL.	FF	FC	STL	FF	-	-	-	-	MFR. PROVIDED	1, 2, 8
J08C	MAINTENANCE SHOP 2	J08	DB	12'-0"	10'-0"	0'-3"	STL.	FF	FC	STL	FF	-	-	-	-	MFR. PROVIDED	1, 2, 8
J09A	TOOLS CLOSET	J09	DA	3'-0"	7'-0"	0'-1 3/4"	H.M.	PNT.	FA	H.M.	PNT-3	-	1/A8.01J	2/A8.01J	3/A8.01J	ND80TD	1, 2, 3, 4, 6
J09B	TOOLS CLOSET	J09	DA	3'-0"	7'-0"	0'-1 3/4"	H.M.	PNT.	FA	H.M.	PNT-3	-	1/A8.01J	2/A8.01J	3/A8.01J	ND80TD	1, 2, 3, 4, 6
J10A	MAINTENANCE SHOP 3	J10	DB	12'-0"	10'-0"	0'-3"	STL.	FF	FC	STL	FF	-	-	-	-	MFR. PROVIDED	1, 2, 8
J10B	MAINTENANCE SHOP 3	J10	DB	12'-0"	10'-0"	0'-3"	STL.	FF	FC	STL	FF	-	-	-	-	MFR. PROVIDED	1, 2, 8
J10C	MAINTENANCE SHOP 3	J10	DA	3'-0"	7'-0"	0'-1 3/4"	H.M.	PNT.	FA	H.M.	PNT-3	-	1/A8.01J	2/A8.01J	3/A8.01J	ND80TD	1, 2, 3, 4, 6

**DOOR NOTES**

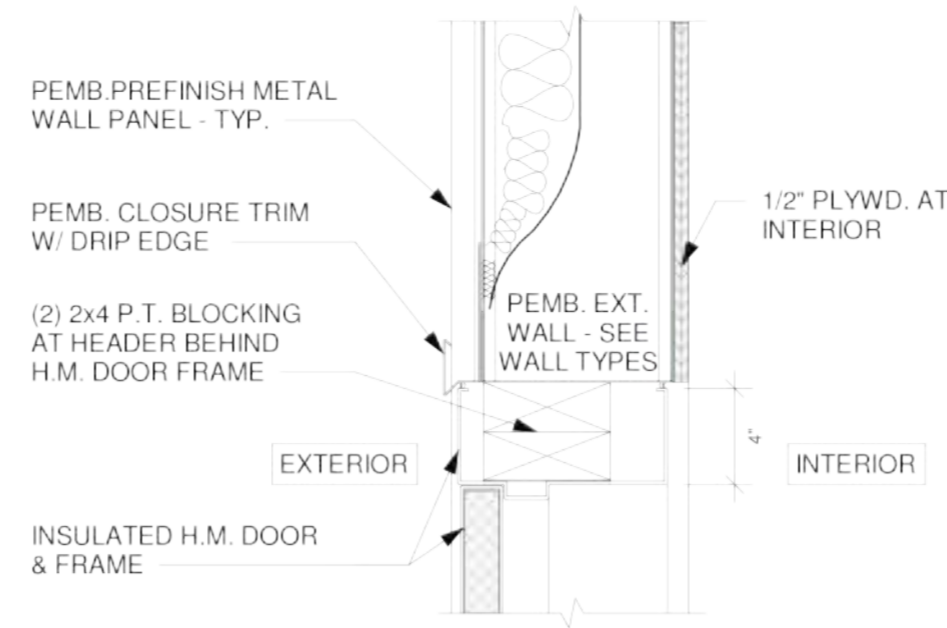
- SEE SPECIFICATIONS FOR HARDWARE SETS
- INSULATED
- WEATHER STRIPPING
- DOOR CLOSER
- CYLINDRICAL LOCK SYSTEM
- KEYPAD AND CARD READER
- COILING OVERHEAD DOOR WITH HOOD
- ON TRACK OVERHEAD DOOR

**DOOR HARDWARE LIST**

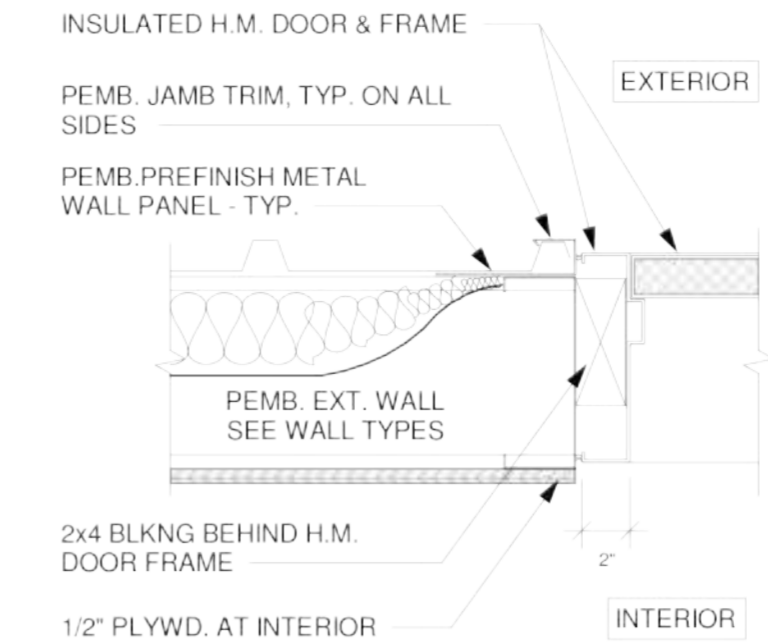
LEVER DESIGN: RHODES (RHO) FINISH: SATIN NICKEL  
 SILENCER: ROCKWOOD 608.  
 DOOR SHOE: PEMKO 316AS  
 THRESHOLD: NATIONAL GUARD R050 RAMP THRESHOLD, ADA COMPLIANT UNIT WITH SILICONE INSERT MUST BE COMPATIBLE WITH FLOOR LEVELS.  
 KICK PLATE & MOP PLATE ROCKWOOD K1050-U32D (8" x 34" x 0.050").  
 HINGES: STANLEY FBB192 5 x 5, STEEL, 5 KNUCKLE, (3 PER LEAF).  
 CLOSE: LCN 4040XP SIZE 2, DOOR MOUNTED.  
 DOOR CLOSERS MOUNTED ON INTERIOR SIDE.  
 LATCH GUARD: LVES LG18, OR COMPATIBLE WITH HARDWARE.

A4

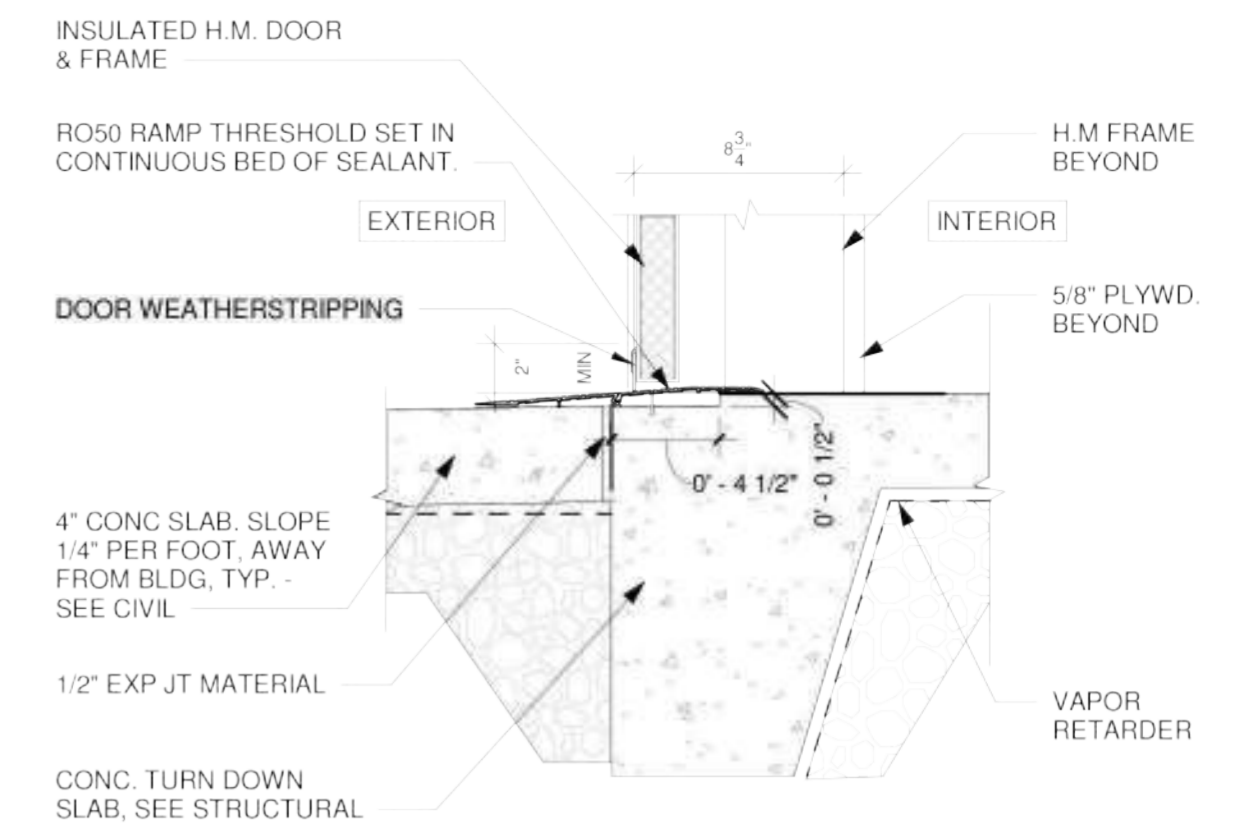
**1 DOOR HEAD DETAIL**  
 A8.01J 1 1/2" = 1'-0"



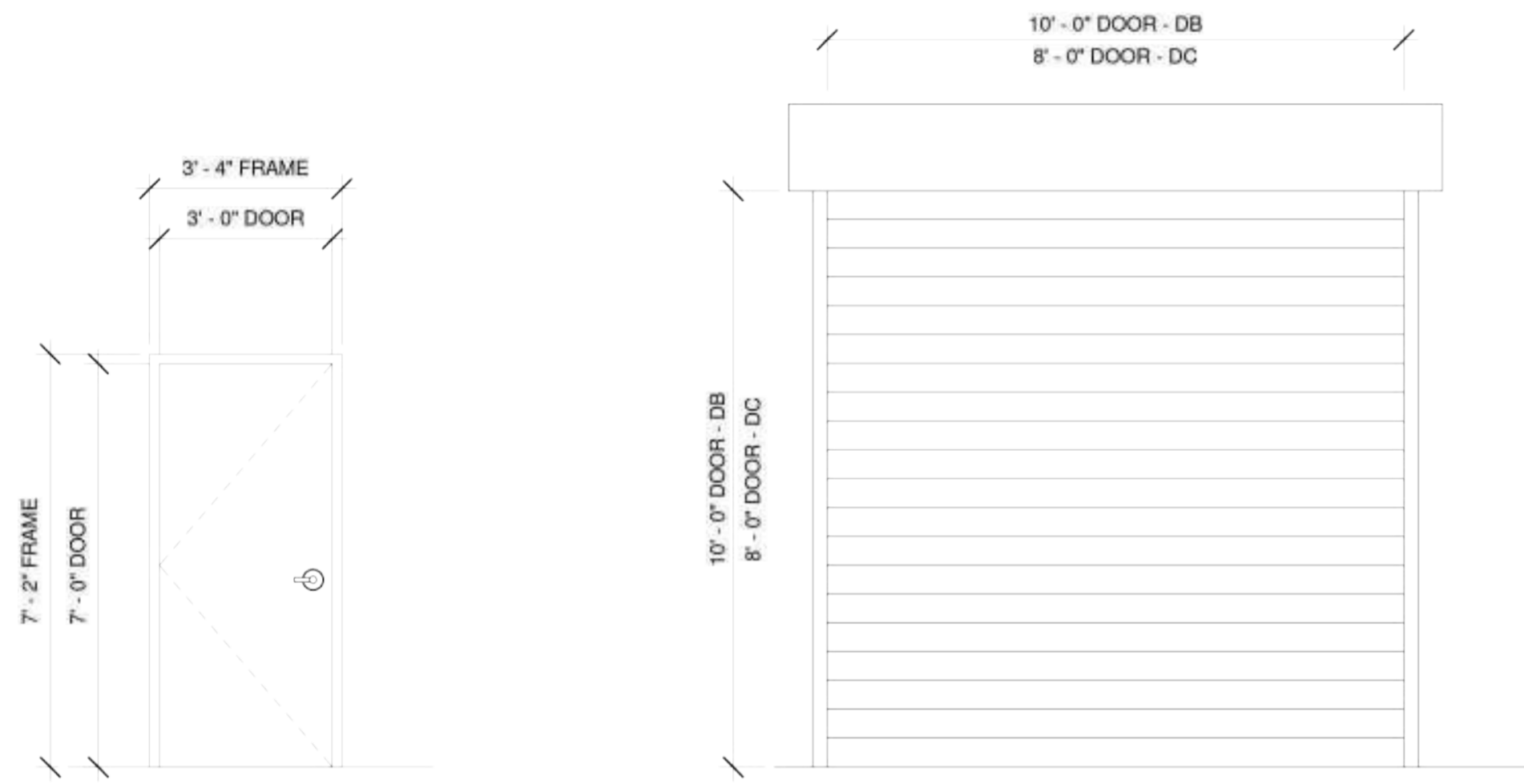
**2 DOOR JAMB DETAIL**  
 A8.01J 1 1/2" = 1'-0"



**3 DOOR SILL DETAIL**  
 A8.01J 1 1/2" = 1'-0"



**DOOR & FRAME TYPES**

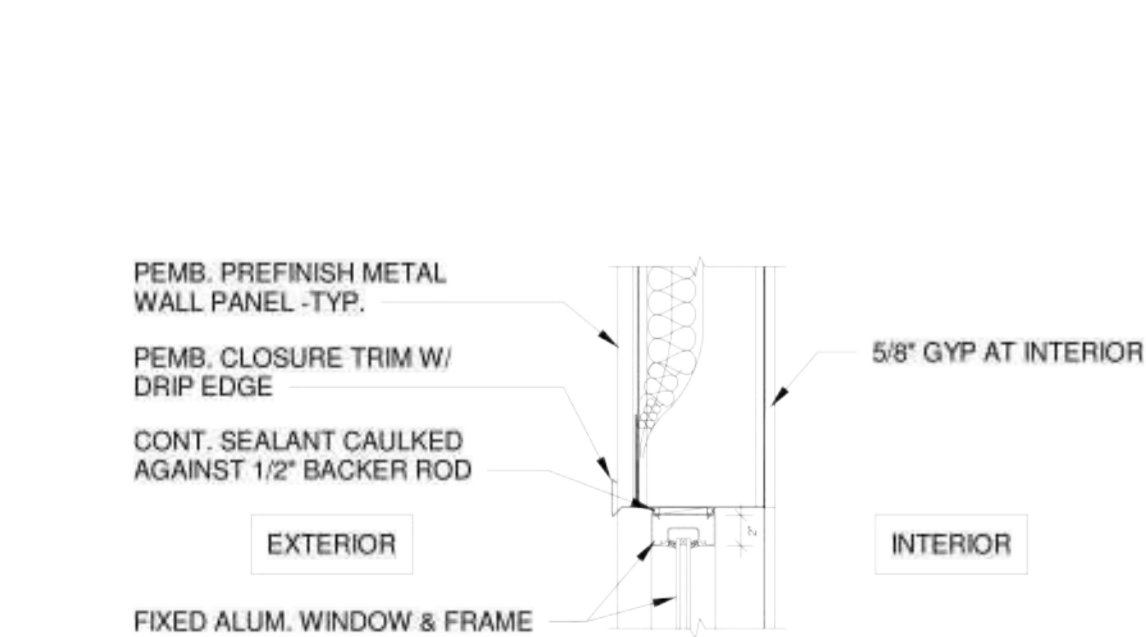


**DA & FA**

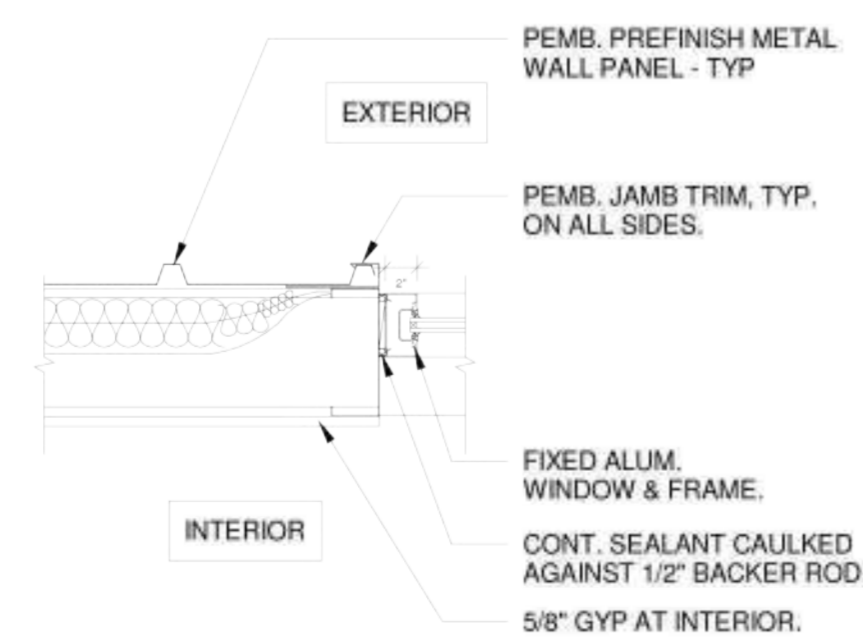
**DB/DC & FB**

**WINDOW SCHEDULE**

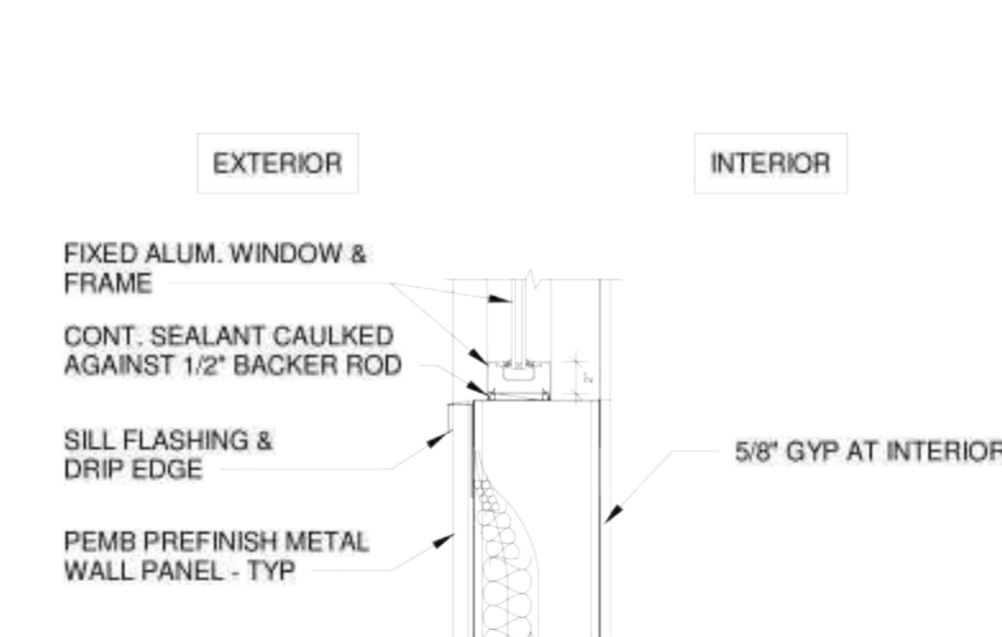
ROOM NUMBER	ROOM NAME	WINDOW TYPE	WIDTH	HEIGHT	HEAD HEIGHT	SILL HEIGHT	COMMENTS
A133	OFFICE	W01	3'-0"	4'-0"	7'-0"	3'-0"	



**4 WINDOW HEAD**  
 A8.01J 1" = 1'-0"



**5 WINDOW JAMB**  
 A8.01J 1" = 1'-0"



**6 WINDOW SILL**  
 A8.01J 1" = 1'-0"

**LOSE DESIGN**  
 SPACES FOR LIFE.

THE DRAWING AND THE DESIGN ORIGINALLY ARE PROPERTY OF THE ARCHITECT. REPRODUCTION, COPYING, OR USE OF THIS DRAWING WITHOUT THEIR WRITTEN CONSENT IS PROHIBITED, AND ANY REPRODUCTION IS SUBJECT TO LEGAL ACTION.



GEORGIA

**THE GROVE**  
**BUILDING "J" - MAINTENANCE FACILITY**  
 1089 HWY 81 - LOGANVILLE, GA 30052  
 PREPARED FOR:  
 WALTON COUNTY

LOGANVILLE

SUBMITTALS / REVISIONS		
NO.	DATE	DESCRIPTION
A4	04/28/2023	Advertisement 4
R2	7/15/2024	VE Changes

CONFORMED SET

SHEET TITLE  
**DOOR SCHEDULE, WINDOW INFORMATION, AND DETAILS**

PROJECT NO.	DATE
22010	09/19/24
DRAWN BY	SCALE
STAFF	As indicated
CHECKED BY	
NR	
SHEET NO.	

**A8.01J**

**Branch Panel: J**

Location: OFFICE J01  
Supply From:  
Mounting: SURFACE  
Enclosure: NEMA 1

Volts: 120/208 Wye  
Phases: 3  
Wires: 4

A.I.C. Rating: 22,000  
Mains Type: MLO  
Mains Rating: 400.00 A

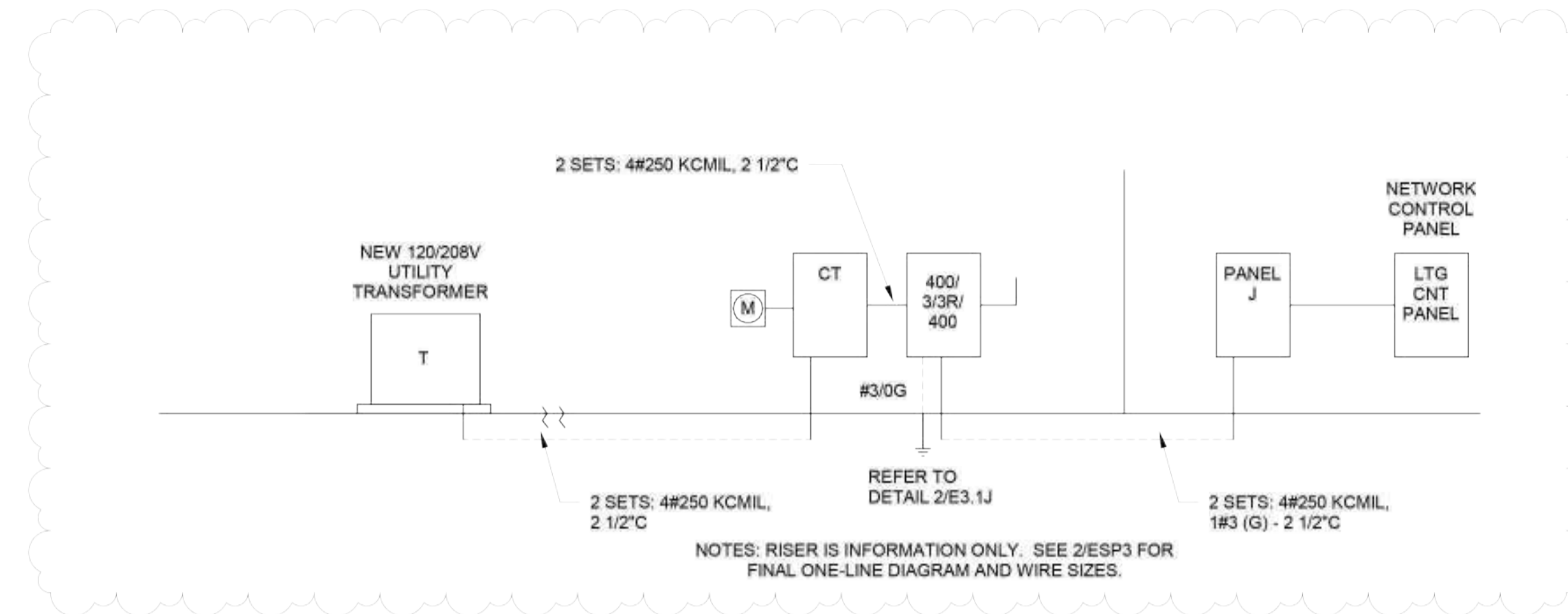
CKT	Circuit Description	Trip	Poles	A	B	C	Poles	Trip	Circuit Description	CKT	
1	LIGHTING	20 A	1	732	720			1	20 A	2	
3	R2 RCPT - MAINT SHOP 1 +	20 A	1		540	540		1	20 A	4	
5	RCPT - MAINT SHOP 2 +	20 A	1			360	180	1	20 A	6	
7	RCPT - MAINT SHOP 3 +	20 A	1	360	540			1	20 A	8	
9	EXTERIOR RECPTS	20 A	1		900	1500		1	20 A	10	
11							167	0	1	20 A	12
13	AIR COMPRESSOR	30 A	3	167	2450				2	20 A	14
15					167	2450			2	20 A	16
17	AIR COMPRESSOR	20 A	2			750	2450		2	20 A	18
19									2	20 A	20
21	30A RCPT	30 A	2		2250	750			2	20 A	22
23									2	20 A	24
25	AIR COMPRESSOR	20 A	2	750	750				2	20 A	26
27					750	750			2	20 A	28
29	R2 COUNTER RECEPTACLE +	20 A	1			540	540		1	20 A	30
31	COUNTER RECEPTACLE +	20 A	1	540	540				1	20 A	32
33	STORAGE RECEPTACLE	20 A	1		540	540			1	20 A	34
35	30A RECEPT	30 A	2			2250	2250		2	30 A	36
37				2250	2250				2	30 A	38
39	30A RECPT	30 A	2		2250	2250			2	30 A	40
41									2	30 A	42
43	AIR COMPRESSOR	20 A	2	750	750				2	20 A	44
45					750	750			2	20 A	46
47	EF-5	20 A	1				23	100	1	20 A	48
49	EF-6	20 A	1	23	100				1	20 A	50
51	EF-7	20 A	1		23	100			1	20 A	52
53	UH-5	20 A	1			100	100		1	20 A	54
55	UH-1	20 A	1	100	100				1	20 A	56
57	UH-3	20 A	1		100	100			1	20 A	58
59	UH-7	25 A	1				100	1800	2	40 A	60
61	WH-2	100 A	2	7800	1800				1	20 A	62
63					7800	329			1	20 A	64
65	SPARE	20 A	1			0	250		2	20 A	66
67	SPARE	20 A	1	0	250				1	20 A	68
69	SPARE	20 A	1		0	180			1	20 A	70
71	SPARE	20 A	1			0	0		1	20 A	72
73	SPARE	20 A	1	0	0				1	20 A	74
75	SPARE	20 A	1		0	0			1	20 A	76
77	SPARE	20 A	1			0	0		1	20 A	78
79	SPARE	20 A	1	0	0				1	20 A	80
81	SPARE	20 A	1		0	0			1	20 A	82
83	SPARE	20 A	1			0	0		1	20 A	84

Total Load: 26921 VA, 26308 VA, 19459 VA  
Total Amps: 233.12 A, 228.02 A, 162.16 A

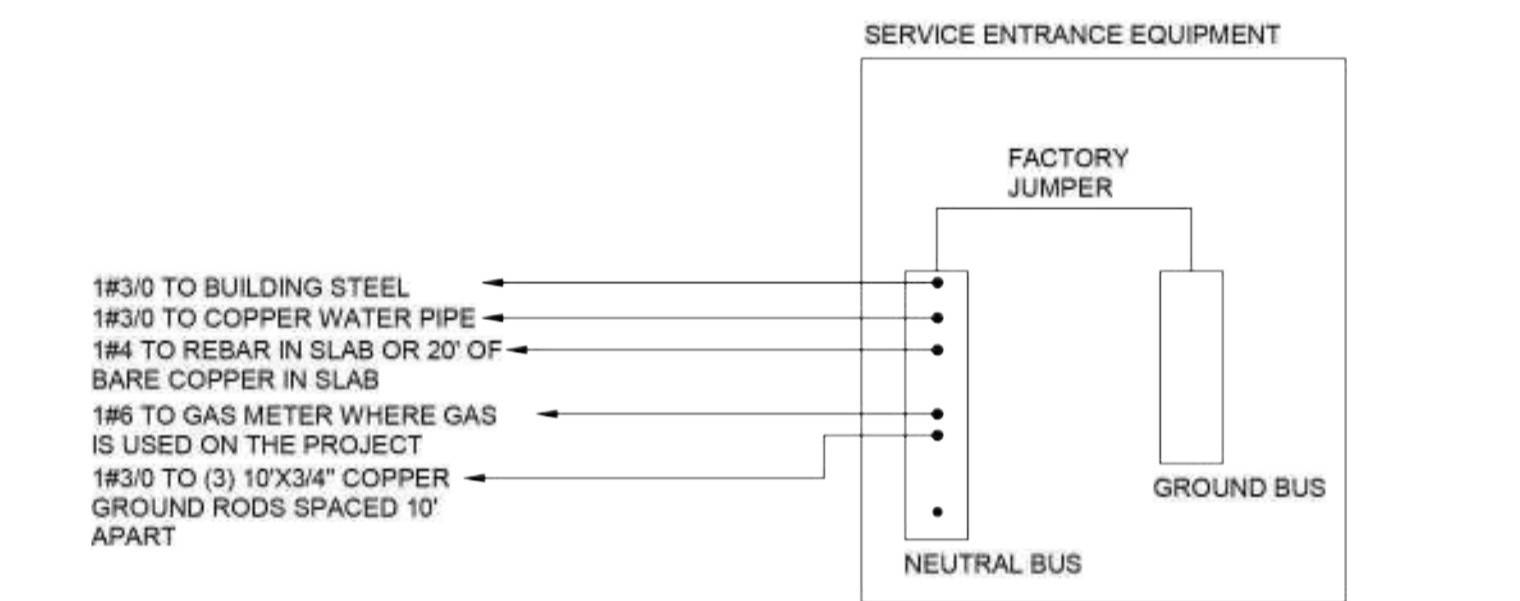
Load Classification	Connected Load	Demand Factor	Estimated Demand	Panel Totals
LIGHTING	1038 VA	125.00%	1298 VA	Total Conn. Load: 72689 VA
RECEPTACLE	7560 VA	100.00%	7560 VA	Total Est. Demand: 72949 VA
HVAC	9799 VA	100.00%	9799 VA	Total Conn. Current: 201.77 A
HEATING	0 VA	0.00%	0 VA	Total Est. Demand Current: 202.49 A
KITCHEN	0 VA	0.00%	0 VA	Non-Coinc. Heat/AC Current: 27.20 A
LARGEST MOTOR	0 VA	0.00%	0 VA	Total Est. Demand Current-NC: 202.49 A
MOTORS	19992 VA	100.00%	19992 VA	Total Est. Demand Load-NC: 72949 VA
MISCELLANEOUS	34300 VA	100.00%	34300 VA	
OTHER CONTINUOUS	0 VA	0.00%	0 VA	

\* DENOTES PROVIDE LOCK-ON CIRCUIT BREAKER # DENOTES PROVIDE AFCI CIRCUIT BREAKER

Notes:



1 DETAIL - ELECTRICAL RISER DIAGRAM  
E3.1J NOT TO SCALE



NOTES:  
1. PROVIDE TEST WELL FOR EACH GROUND ROD.  
2. ALL CONNECTORS SHALL BE UL LISTED NON-REVERSIBLE TYPE OR CADWELDS.  
3. PROVIDE (3) ADDITIONAL DRILLED HOLES IN BUS BAR FOR FUTURE USE.  
4. ALL ISOLATED GROUND CONDUCTORS SHALL TERMINATE ON THE GROUND BUS.  
5. PROVIDE #6 JUMPER ACROSS ANY WATER METER OR WATER FILTER.

2 DETAIL - SERVICE ENTRANCE GROUNDING  
E3.1J 12" = 1'-0"

**MECHANICAL EQUIPMENT CONNECTION SCHEDULE**

UNIT TYPE MARK	UNIT IDENTIFIER	PANEL NAME	CIRCUIT NUMBER	FEEDER SIZE	DISCONNECTING MEANS	LOAD	NOTES
EF	1	J	1	2#12, 1#12(G), 1/2"C	MRS	23.00 W	1, 3
EF	2	J	48	2#12, 1#12(G), 1/2"C	MRS	100W	1
EF	3	J	50	2#12, 1#12(G), 1/2"C	MRS	100W	1
EF	4	J	52	2#12, 1#12(G), 1/2"C	MRS	100W	1
EF	5	J	47	2#12, 1#12(G), 1/2"C	MRS	23.00 W	1, 3
EF	6	J	49	2#12, 1#12(G), 1/2"C	MRS	23.00 W	1, 3
EF	7	J	51	2#12, 1#12(G), 1/2"C	MRS	23.00 W	1, 3
PTHP	1	J	14,16	2#12, 1#12(G), 1/2"C	MRS	2828 KW	1
PTHP	2	J	18,20	2#12, 1#12(G), 1/2"C	MRS	2828 KW	1
UH	1	J	55	2#12, 1#12(G), 1/2"C	MRS	100W	1
UH	2	J	56	2#12, 1#12(G), 1/2"C	MRS	100W	1
UH	3	J	57	2#12, 1#12(G), 1/2"C	MRS	100W	1
UH	4	J	54	2#12, 1#12(G), 1/2"C	MRS	100W	1
UH	5	J	53	2#12, 1#12(G), 1/2"C	MRS	100W	1
UH	6	J	58	2#12, 1#12(G), 1/2"C	MRS	100W	1
UH	7	J	59	2#10, 1#10(G), 3/4"C	30/2,1,NF	2 KW	1
WH	1	J	60,62	2#8, 1#10(G), 3/4"C	60/2,1,NF	6.2 KW	1
WH	2	J	61,63	2#3, 1#6(G), 1"C	100/2,1,NF	15.6 KW	1

**NOTES:**

- PROVIDE OVERCURRENT PROTECTION AND BRANCH CIRCUITS PER UL LISTED REQUIREMENTS FOR EQUIPMENT SERVED. REFER TO MANUFACTURER DATA AND EQUIPMENT CUT-SHEETS FOR ROUGHIN LOCATIONS OF ELECTRICAL CONNECTIONS AND INTERCONNECTIONS FOR ALL EQUIPMENT. COORDINATE EXACT NAMEPLATE DATA OF EQUIPMENT BEING INSTALLED WITH MECHANICAL CONTRACTOR. THIS MEANS FOR THE ELECTRICAL CONTRACTOR TO MEET WITH THE MECHANICAL CONTRACTOR AND ACQUIRE A COPY OF THE SHOP DRAWINGS FOR THE EXACT PIECES OF EQUIPMENT THAT WILL BE INSTALLED. THE ELECTRICAL CONTRACTOR SHALL COMPARE THE MANUFACTURER'S DATA SHEETS FOR THE ACTUAL EQUIPMENT THAT IS BEING USED WITH THE ELECTRICAL PLANS PRIOR TO ORDERING THE ELECTRICAL GEAR. IF THERE ARE ANY DIFFERENCES BETWEEN WHAT THE MECHANICAL CONTRACTOR IS PLANNING TO USE AND WHAT THE ELECTRICAL PLANS INDICATE, THE ELECTRICAL CONTRACTOR SHALL BRING THE DISCREPANCIES TO THE ATTENTION OF THE GENERAL CONTRACTOR AND THE CONTRACTORS SHALL WORK OUT ANY ADDITIONAL MONIES REQUIRED WITHOUT ANY COST TO THE OWNER. IF THIS ON SITE COORDINATION DOES NOT HAPPEN, IT WILL BE ASSUMED THAT THE ELECTRICAL CONTRACTOR SHALL ABSORB ANY AND ALL COSTS THAT MAY BE ASSOCIATED WITH THE MECHANICAL CONTRACTOR'S EQUIPMENT. NOTE THAT THE MECHANICAL CONTRACTOR MAY USE DIFFERENT MANUFACTURERS THAN THE DESIGN INTENT PLANS INDICATE AND THESE DIFFERENT MANUFACTURERS MAY HAVE DIFFERENT ELECTRICAL REQUIREMENTS.
- DUCT SMOKE DETECTORS SHALL BE FURNISHED BY MECHANICAL CONTRACTOR, INSTALLED BY ELECTRICAL CONTRACTOR AND CONNECTED BY ELECTRICAL CONTRACTOR. EC SHALL FURNISH AND INSTALL REMOTE ANNUNCIATORS VISIBLE IN THE CEILING BELOW FOR THE SMOKE DUCT DETECTORS IN THIS EQUIPMENT.
- EXTEND AND CONNECT EXHAUST FAN TO LOCAL LIGHTING CIRCUIT WITHIN THIS ROOM. FAN SHALL BE CONTROLLED BY LOCAL LIGHT SWITCH AND SWITCHED WITH THE LIGHTS.
- INDOOR UNIT POWERED FROM OUTDOOR UNIT. PROVIDE WITH MRS ON INDOOR UNIT IN ORDER TO COMPLY WITH CODE.

**LIGHTING CONTROL SCHEDULE**

CIRCUITS CONTROLLED	TYPE OF LIGHTING	SCHEDULE
J-64	BUILDING MOUNTED	RELAYS
HP2-1,3,5,7	STREET POLES	RELAYS
HP2-2	SIGNAGE	RELAYS
HP2-4,6	SEASONAL RECPTS	RELAYS

NOTES:  
1. ALL CIRCUITS ARE ROUTED THRU RELAYS IN LIGHTING CONTROL PANEL.

**LIGHTING FIXTURE SCHEDULE**

FIXTURE MARK	MANUFACTURER	MODEL	VOLTAGE	LAMP	DESCRIPTION
B1	ELITE LIGHTING	24-OVHP-LED-4000L-DIM10-MVOLT-40K-85	120 V	37W LED	ARCHITECTURAL RECESSED LED 2X4 PROVIDE GRID/FLANGE MOUNT KIT WHERE APPLICABLE.
D	ELITE LIGHTING	4-OC1-LED-3000L-DIM10-MVOLT-35K-85	120 V	25W LED	4' LED STRIP LIGHT
D1	ELITE LIGHTING	2-OC1-LED-3000L-DIM10-MVOLT-35K-85	120 V	23W LED	2' LED STRIP LIGHT
EM	ELITE LIGHTING	ELM-LED-803	120 V	INCLUDED	STANDARD EMERGENCY LIGHT
EM1	HE WILLIAMS	EMER/DECO-DBR-LT-D	120 V	5W LED	EXTERIOR EMERGENCY LIGHT TO BE NORMALLY OFF
OC	ORACLE	OWP-FC-211-LED-7500L-DIM10-MVOLT-40K-BZ	120 V	56W LED	LED WALL PACK TO BE ON AT NIGHT
X	ELITE LIGHTING	ELX-627	120 V	INCLUDED	EXIT/EMERGENCY COMBO. MOUNT AND ADD FACES AND ARROWS AS SHOWN

NOTES:  
1. COORDINATE FINISHES WITH ARCHITECT.



THE DRAWING AND ITS LEGAL INSTRUMENTS ARE PROPERTY OF THE ARCHITECT. REPRODUCTION, COPYING, OR USE OF THIS DRAWING WITHOUT THE ARCHITECT'S WRITTEN CONSENT IS PROHIBITED. ANY REPRODUCTION IS SUBJECT TO LEGAL ACTION.



THE GROVE  
BUILDING "J" - MAINTENANCE FACILITY  
1089 HWY 81, LOGANVILLE, GA 30052  
PREPARED FOR:  
WALTON COUNTY  
LOGANVILLE  
GEORGIA

SUBMITTALS / REVISIONS

NO	DATE	DESCRIPTION
R2	06/13/23	PERMIT REVISIONS
R3	09/19/24	VE Conformed Set

CONFORMED SET

SHEET TITLE  
DETAILS & SCHEDULES  
- ELECTRICAL

PROJECT NO	DATE
22010	09/19/24
DRAWN BY	SCALE
SSH	
CHECKED BY	As indicated
SWL	
SHEET NO	SHEET OF 40



E3.1J





SUBMITTALS / REVISIONS		
NO	DATE	DESCRIPTION
A3	4/21/23	ADDENDUM 3
R3	09/19/24	VE Conformed Set

CONFORMED SET

SHEET TITLE

SCHEDULES,  
NOTES & DETAILS  
PLUMBING

PROJECT NO <b>22010</b>	DATE <b>09/19/24</b>
DRAWN BY BBW	SCALE
CHECKED BY TAN	AS NOTED
SHEET NO	SHEET OF 40



**P-0.1J**

PLUMBING FIXTURE SCHEDULE				CONNECTION SCHEDULE			
DESIGNATION	MANUFACTURER	MODEL NO	FIXTURE DESCRIPTION	WASTE	VENT	CW	HW
				P.1a	AMERICAN STANDARD	"AFWALL" 3351-528	16-1/2" HIGH VITREOUS CHINA WATER CLOSET W/ ELONGATED BOWL, FLUSH VALVE, AMERICAN STANDARD 606B.121 (1.28 GPF). SEAT SHALL BE OPEN FRONT LESS SEAT CHURCH 2155CTJ HEAVY DUTY SOLID PLASTIC HANDLE (PUSH BUTTON) TO BE ON WIDE SIDE OF STALL. PROVIDE JR SMITH 210L CARRIER OR EQUAL.
P.2	AMERICAN STANDARD	"LUCERNE" 0355-012	VITREOUS CHINA WALL-HUNG LAVATORY (HANDICAP). FAUCET -- AMERICAN STANDARD 605B.105 0.5 GPM AERATOR PROVIDE WITH THERMOSTATIC MIXING VALVE MODEL No. R2570-MIXLF TRAP - 1-1/2" CAST BRASS WITH C.O. PLUG SUPPLY - 3/8" ANGLE SUPPLY WITH STOPS PROVIDE OFFSET TAILPIECE INSULATE TRAP OUTLET & SUPPLY TO MEET A.D.A. PROVIDE J.R. SMITH CARRIER MODEL # 722	2"	1/2"	1/2"	1/2"
P.3	ELKAY	"LUSTERTONE" LRAD252140	STAINLESS STEEL SINGLE BOWL TOP MOUNT ADA SINK 25"x21-1/2"x4" DEEP, REAR CENTER DRAIN, 3 HOLES, 18 GAUGE SS. PROVIDE WITH DELTA FAUCET MODEL #100LF-HDF FAUCET	2"	1/2"	1/2"	1/2"
P.4	GUARDIAN	G1814P	EYEWASH FOR WALL MOUNTING. TWO GS-PLUS™ SPRAYTYPE SPRAY HEADS DELIVER A FLOOD OF WATER FOR RINSING EYES.	2"	1/2"	1/2"	1/2"

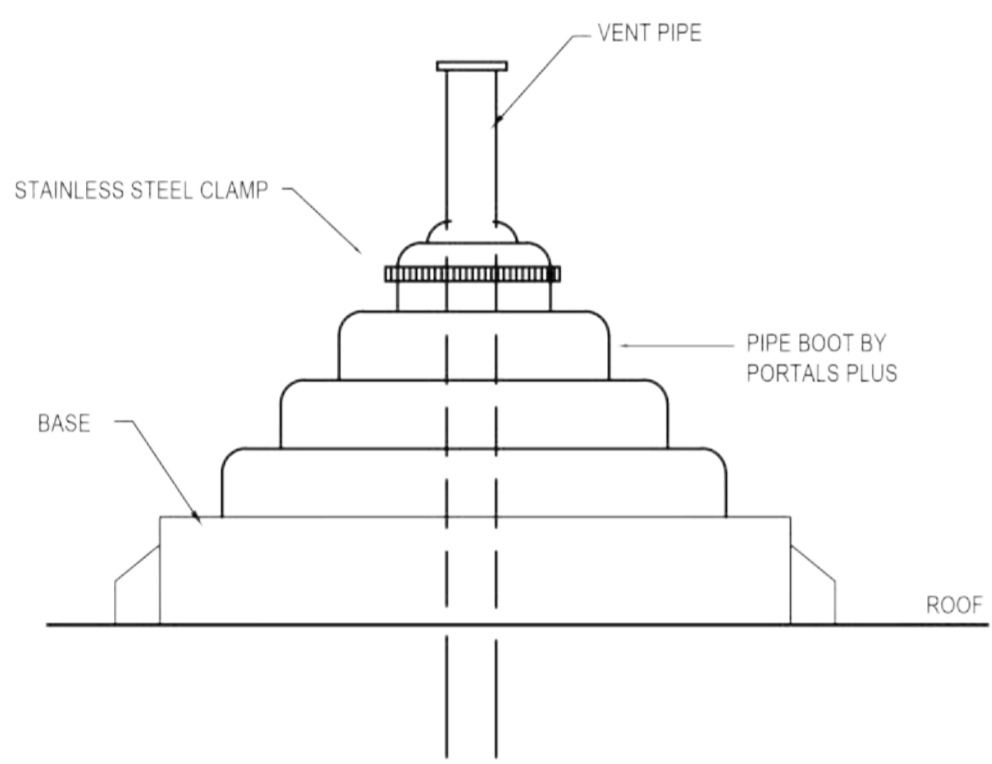
ELECTRIC WATER HEATER SCHEDULE								
TAG	TANK SIZE	KW	VOLT/PHASE	RECOVERY	SET POINT	BASIS OF DESIGN	LOCATION	NOTES
WH-1	---	6.2	208/1	---	110F	CHRONOMITE M-30-L	TOILET ROOM(S)	
WH-2	---	15.6	208/1	---	110F	CHRONOMITE R-75L/208	BREAK ROOM J02	
WH-3	---	15.6	208/1	---	110F	CHRONOMITE R-75L/208	MAINT. SHOP1 J07	

NOTE TO GENERAL CONTRACTOR (GC) AND SUB-CONTRACTORS: MECHANICAL, PLUMBING AND ELEVATOR SUBMITTALS SHALL HAVE AN APPROVAL SIGNATURE FROM THE ELECTRICAL SUBCONTRACTOR INDICATING THAT THE ELECTRICAL CONTRACTOR HAS REVIEWED THE SUBMITTALS AND HAS COMPARED THE ELECTRICAL REQUIREMENTS OF THE SUBMITTED EQUIPMENT WITH THE PLANS AND HAS MADE ANY REQUIRED ADJUSTMENTS TO THE ELECTRICAL GEAR. ANY MECHANICAL OR PLUMBING SUBMITTAL THAT HAS A POWER REQUIREMENT THAT IS SUBMITTED WITHOUT THE SIGNATURE APPROVAL OF THE ELECTRICAL CONTRACTOR WILL BE RETURNED WITHOUT COMMENT.

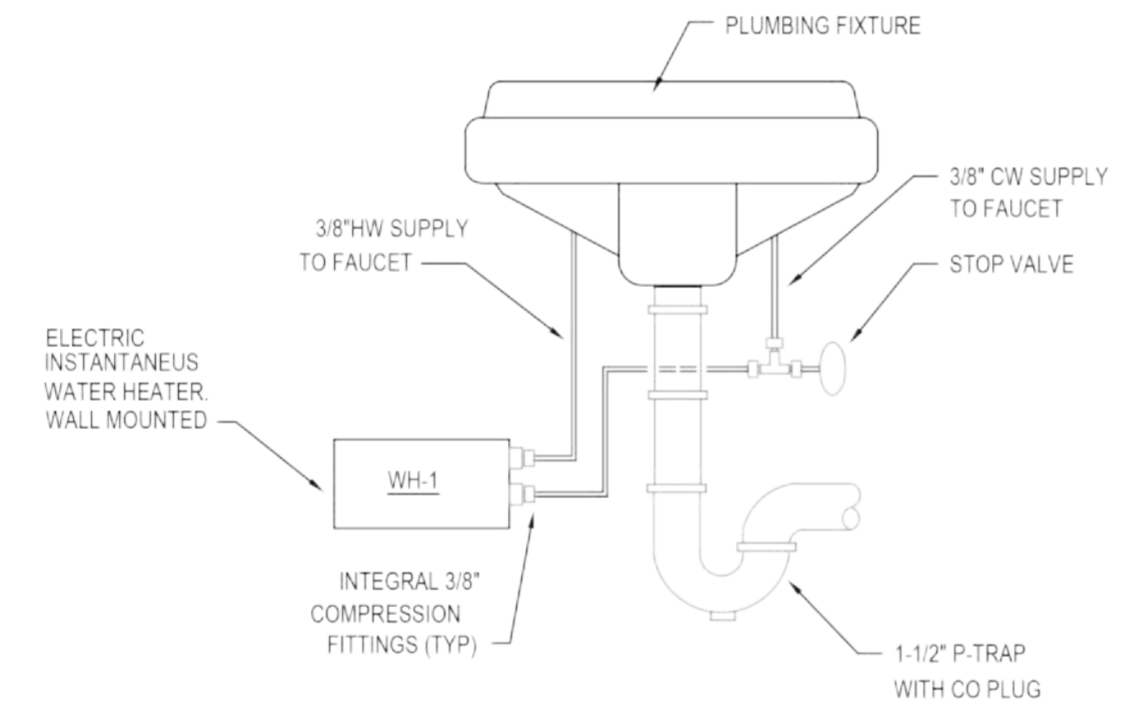
PLUMBING LEGEND	
	SANITARY LINE
	COLD WATER
	HOT WATER
	HOT WATER RETURN
	VENT PIPE
	STORM LINE
	BALL VALVE
	GATE VALVE
	FLOOR CLEANOUT
	FLOOR CLEANOUT
	VENT THRU ROOF
	PIPE UP
	PIPE DOWN
	ROOF DRAIN

PLUMBING NOTES

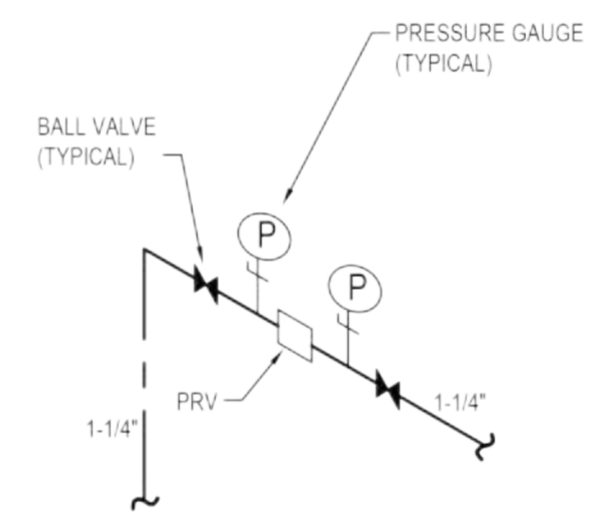
- PLUMBING SHALL BE IN ACCORDANCE WITH 2018 INTERNATIONAL PLUMBING CODE AND APPLICABLE LOCAL CODES.
- FURNISH APPROPRIATE ADAPTERS FOR CONNECTION OF DISSIMILAR PIPING.
- FLOOR CLEANOUT EQUAL TO JAY R. SMITH MODEL 4020.
- ALL EXTERIOR GAS PIPE SHALL BE PAINTED W/ BLACK RUST INHIBITIVE PAINT.
- WATER PIPE SHALL BE TYPE "L" HARD DRAWN COPPER WITH 95-5 LEAD FREE SOLDER JOINTS, CPVC OR PEX PIPE.
- PIPE HANGERS FOR WATER PIPE SHALL BE EQUAL TO PHD 155 WITH INSULATION SHIELD.
- TEST WATER PIPING AT A HYDROSTATIC PRESSURE OF 125 PSI AND HOLD FOR TWENTY-FOUR HOURS.
- ALL DOMESTIC COLD WATER, HOT WATER RETURN & HOT WATER PIPE SMALLER THAN 1-1/2" SHALL BE INSULATED WITH 1" THICK FIBERGLASS PIPE INSULATION WITH ALL SERVICE JACKET HOT WATER & HOT WATER RETURN PIPE 1-1/2" AND GREATER SHALL HAVE 1-1/2" THICK FIBERGLASS PIPE INSULATION AS DESCRIBED.
- DOMESTIC WATER SHUT-OFF VALVES SHALL BE WATTS SERIES FBV-4 FOR HOT & COLD WATER PIPE. ACCEPTABLE MANUFACTURERS ARE WATTS, NIBCO AND CRANE OR APPROVED EQUAL.
- WATER HAMMER ARRESTOR (WHA) TO BE EQUAL WATTS 15M2 & SHALL BE LOCATED ACCESSIBLE ABOVE A CEILING & OUT OF WALL.
- SANITARY AND VENT PIPE BELOW SLAB SHALL BE SCHEDULE 40 DWV PVC, OR HUB & SPIGOT CAST IRON.
- SANITARY AND VENT PIPE ABOVE SLAB SHALL BE SCHEDULE 40 DWV PVC, DWV COPPER, OR HUBLESS CAST IRON. PVC NOT ALLOWED IN PLENUM.
- TEST DRAINAGE AND VENT PIPING AT TEN FEET OF WATER COLUMN.
- FLOOR DRAIN, 3" FD, SHALL BE EQUAL TO JAY R. SMITH MODEL 2010C-P050-NB. PROVIDE W/ ZURN Z1021 TRAP PRIMER BELOW SINK.
- NON-FREEZE HOSE BIBB (NFWB) SHALL BE ANTI-SIPHON, VACUUM BREAKER PROTECTED EQUAL TO WOODFORD MODEL 67. HOSE BIBB (HB) EQUAL TO WOODFORD MODEL 24.
- CONTRACTOR SHALL SUBMIT (MINIMUM 3) SETS OF SHOP DRAWINGS AND EQUIPMENT CUT SHEETS TO THE ARCHITECT FOR APPROVAL PRIOR TO STARTING ANY WORK. ANY EQUIPMENT REQUIRING AN ELECTRICAL CONNECTION SHALL FIRST BE REVIEWED AND APPROVED BY THE ELECTRICAL CONTRACTOR VERIFYING THAT THE ELECTRICAL CONTRACTOR HAS COMPARED THE ELECTRICAL REQUIREMENTS OF THE SUBMITTED EQUIPMENT WITH THE PLANS AND HAS MADE ANY REQUIRED ADJUSTMENTS TO THE ELECTRICAL GEAR. ANY SHOP DRAWING THAT IS SUBMITTED WITHOUT THE SIGNATURE APPROVAL OF THE ELECTRICAL CONTRACTOR WILL BE RETURNED WITHOUT COMMENT.
- PLUMBING CONTRACTOR SHALL FIELD VERIFY LOCATION OF ALL EXISTING WATER, VENT, & SANITARY PIPE PRIOR TO START OF WORK. CONTRACTOR TO NOTIFY ARCHITECT AND ENGINEER OF ANY DISCREPANCIES PRIOR TO COMMENCEMENT OF SAID WORK.
- THE PLUMBING PLANS ARE INTENDED TO BE DIAGRAMMATIC AND ARE BASED ON ONE MANUFACTURER'S EQUIPMENT. THEY ARE NOT INTENDED TO SHOW EVERY ITEM IN ITS EXACT LOCATION, EXACT DIMENSIONS, OR ALL OF THE DETAILS OF THE EQUIPMENT. THE CONTRACTOR SHALL OBTAIN MANUFACTURER'S DATA ON ALL EQUIPMENT TO VERIFY THE ACTUAL DIMENSIONS OF THE EQUIPMENT PROPOSED AND USE THIS DATA TO COORDINATE PROPER SERVICE CHARACTERISTICS, ENTRY LOCATIONS, ETC., AND TO INSURE MINIMUM CLEARANCES ARE MAINTAINED.



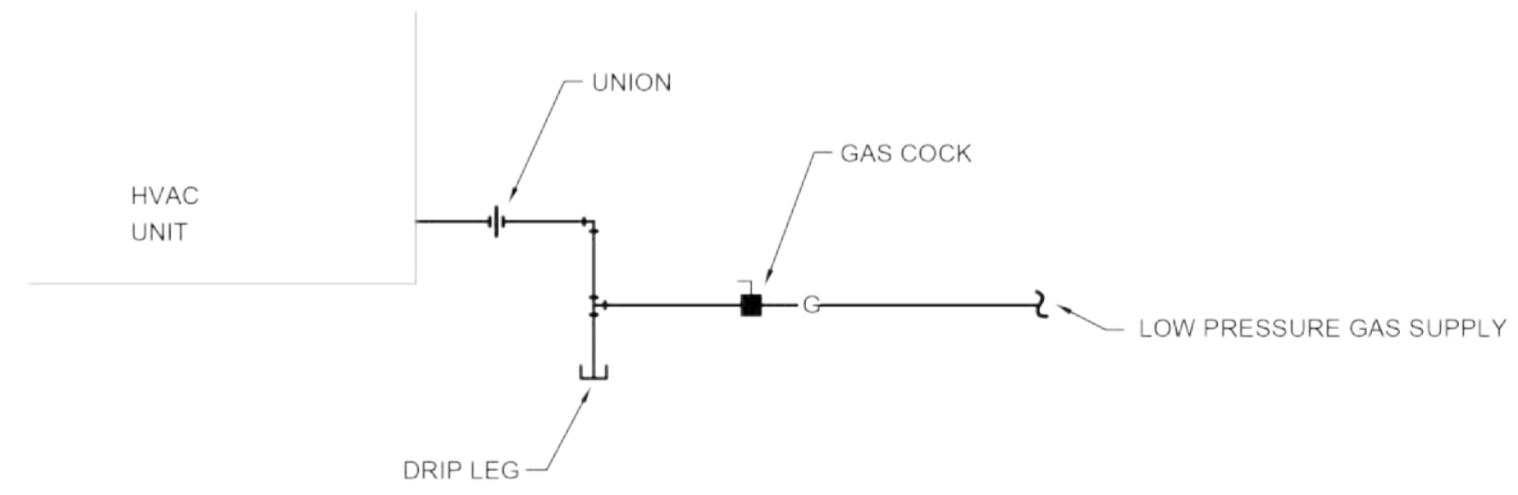
1 VENT THRU ROOF DETAIL  
P-0.1F SCALE: NONE



2 WATER HEATER DETAIL  
P-0.1F SCALE: NONE

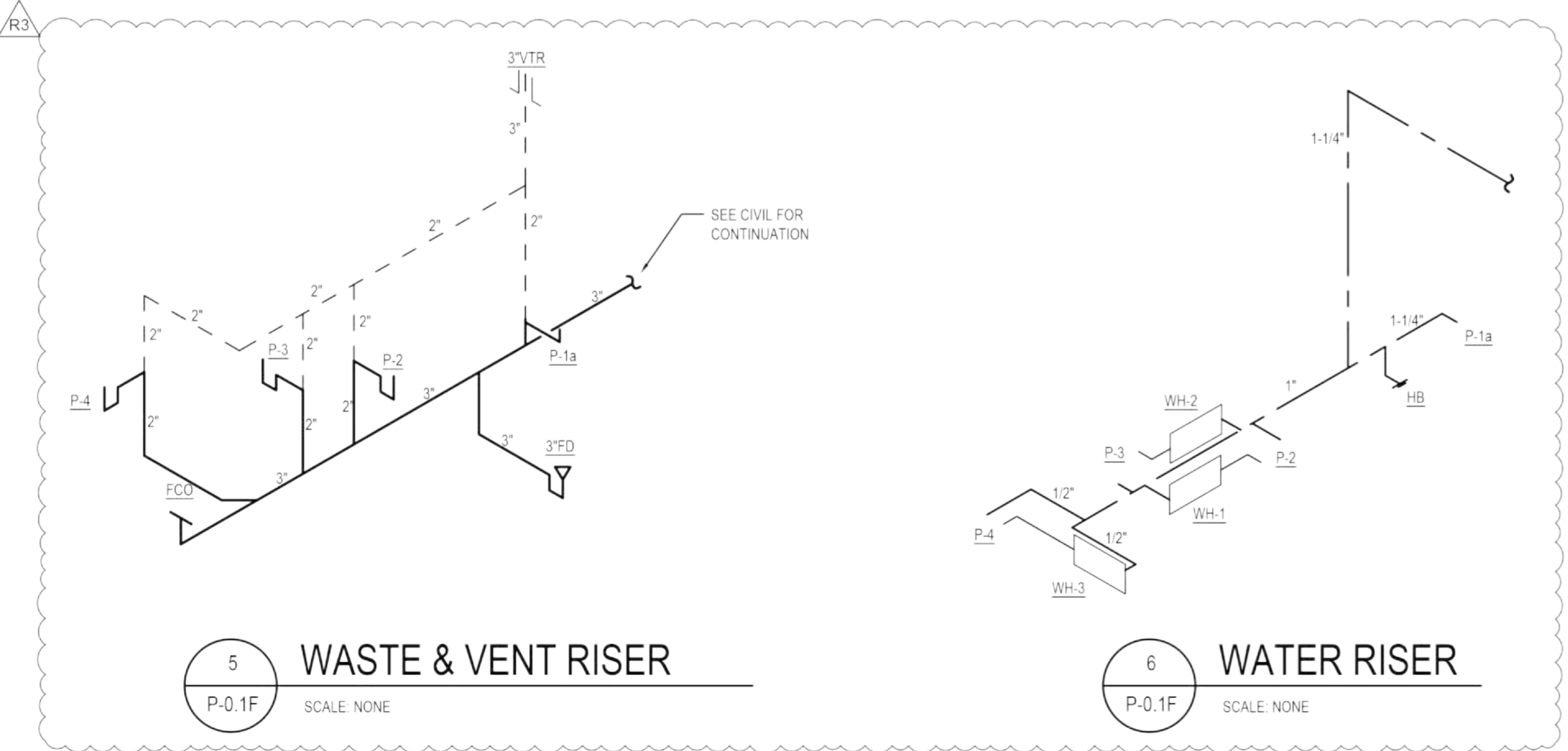


3 VALVE ASSEMBLY DETAIL  
P-0.1F SCALE: NONE



FLEXIBLE CONNECTORS ARE NOT ALLOWED

4 GAS CONNECTION DETAIL  
P-0.1F SCALE: NONE



5 WASTE & VENT RISER  
P-0.1F SCALE: NONE

6 WATER RISER  
P-0.1F SCALE: NONE



GEORGIA

**THE GROVE**  
**BUILDING "J" - MAINTENANCE FACILITY**  
1089 HWY 81, LOGANVILLE, GA 30052  
PREPARED FOR:  
WALTON COUNTY

LOGANVILLE

SUBMITTALS / REVISIONS		
NO	DATE	DESCRIPTION
A3	4/21/23	ADDENDUM 3
R3	09/19/24	VE Conformed Set

CONFORMED SET

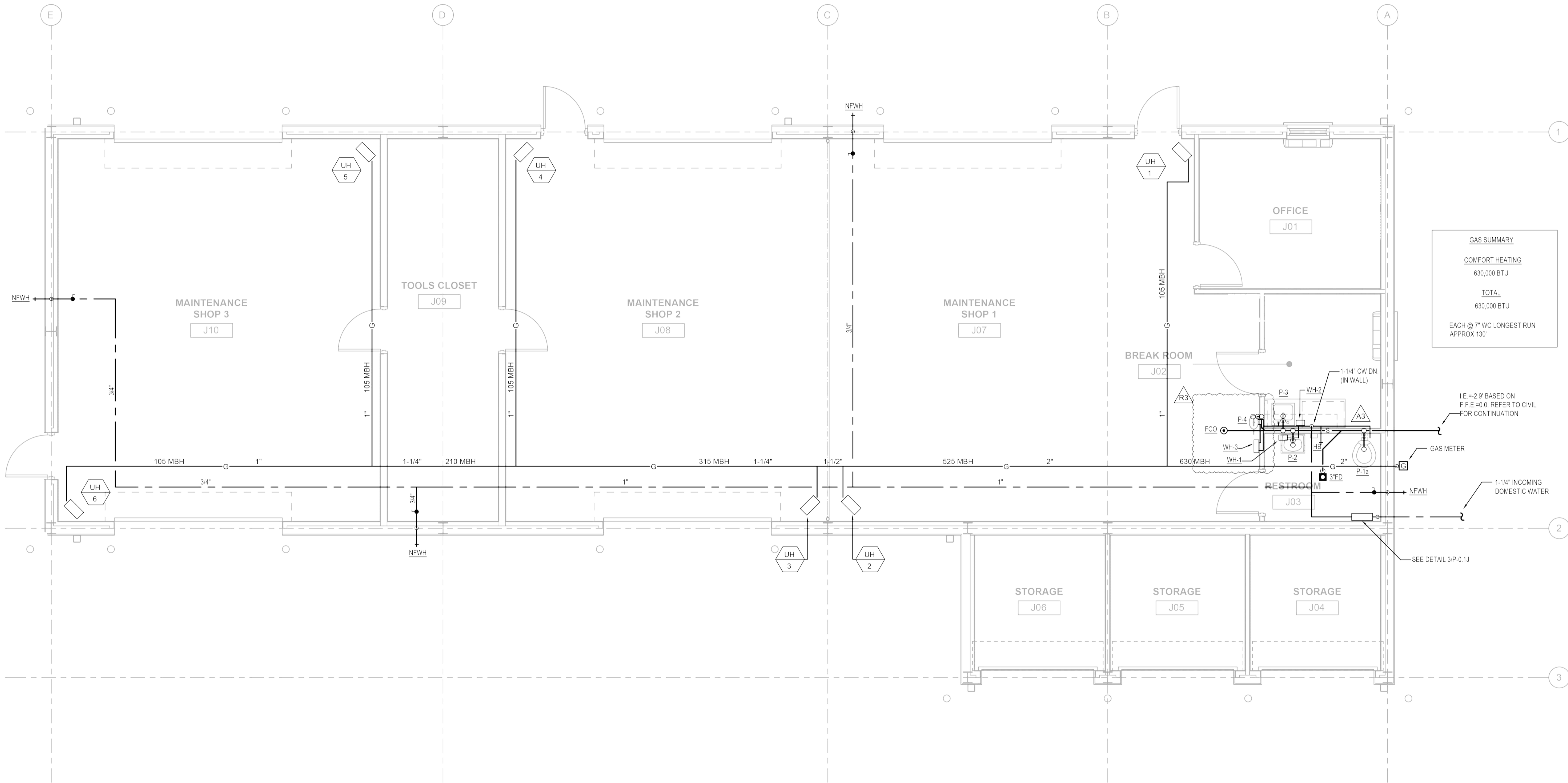
SHEET TITLE

FLOOR PLAN - PLUMBING

PROJECT NO. <b>22010</b>	DATE <b>09/19/24</b>
DRAWN BY BBW	SCALE <b>1/4"=1'-0"</b>
CHECKED BY TAN	SHEET NO. SHEET OF 40

**P-1.1J**

**GAS SUMMARY**  
COMFORT HEATING  
630,000 BTU  
  
TOTAL  
630,000 BTU  
EACH @ 7" WC LONGEST RUN  
APPROX 130'



**1 FLOOR PLAN - PLUMBING**  
P-1.1J SCALE: 1/4" = 1'-0"

**SAVANT**  
Engineering, LLC

5064 Roswell Road, Suite D-301  
Sandy Springs, GA 30342 770-319-7400  
Project 22140 ©2022

COA#: PE1004211  
EXPIRES: 6/30/2024





GEORGIA

**THE GROVE**  
**BUILDING "J" - MAINTENANCE FACILITY**  
1089 HWY 81, LOGANVILLE, GA 30052  
PREPARED FOR:  
WALTON COUNTY

LOGANVILLE

SUBMITTALS / REVISIONS		
NO.	DATE	DESCRIPTION
R2	06/13/23	PERMIT REVISIONS
R3	09/19/24	VE Conformed Set

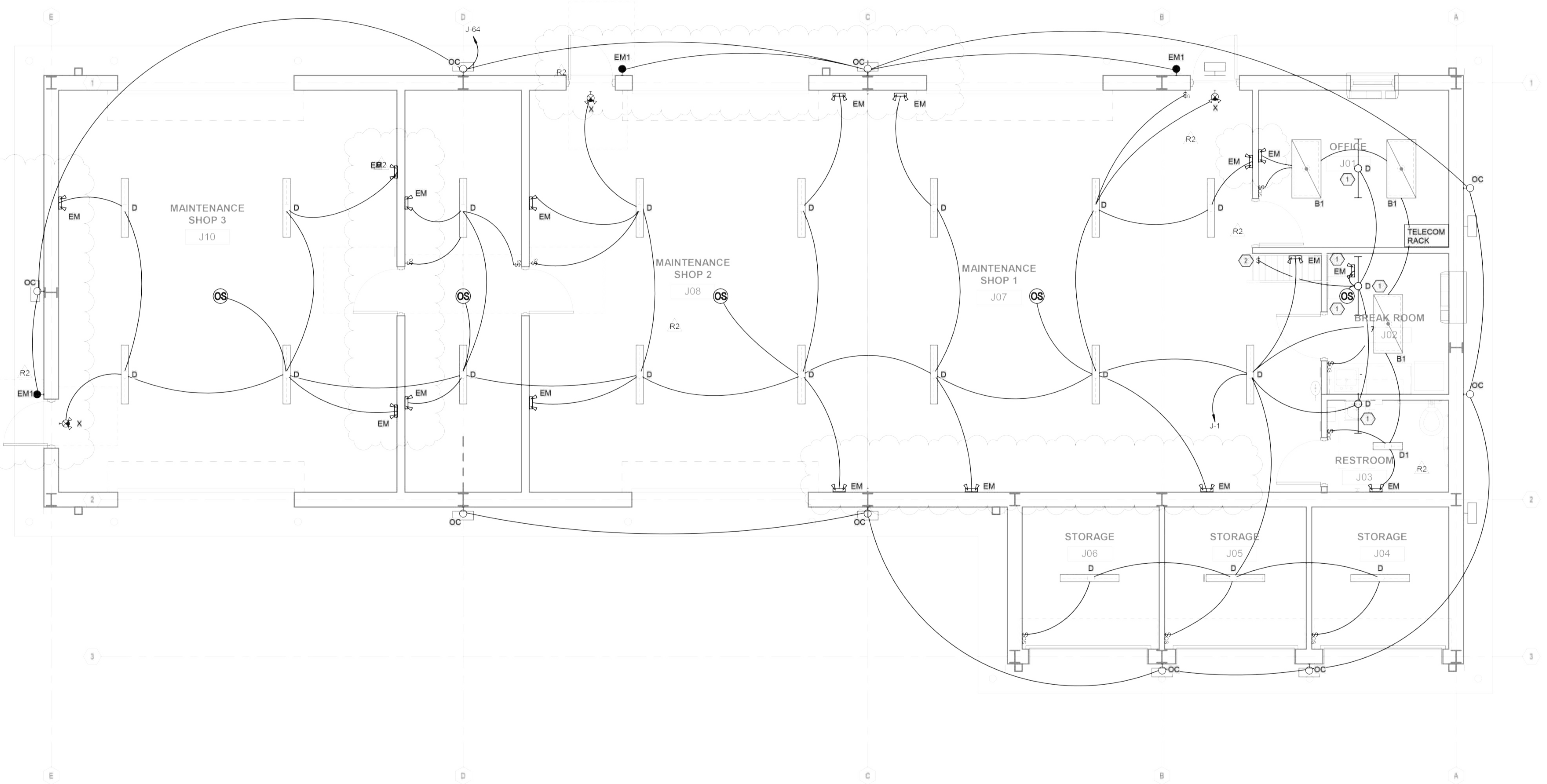
CONFORMED SET

SHEET TITLE  
**MAINTENANCE FACILITY FLOOR PLAN - LIGHTING**

PROJECT NO.	DATE
22010	09/19/24
DRAWN BY	SCALE
SSH	1/4" = 1'-0"
CHECKED BY	
SWL	
SHEET NO.	SHEET OF 40

**E2.1J**

**SAVANT**  
Engineering, LLC  
5064 Roswell Road, Suite D-301  
Sandy Springs, GA 30342 770.319.7400  
Project 22140 ©2025  
CO# PE1004211  
EXPIRES 6/30/2024



- ELECTRICAL NOTES:**
- OBTAIN MANUFACTURER'S DATA ON ALL EQUIPMENT, THE DIMENSIONS OF WHICH MAY AFFECT INSTALLATION. USE THIS DATA TO COORDINATE PROPER SERVICE CHARACTERISTICS, ENTRY LOCATIONS, ETC., AND TO INSURE MINIMUM CLEARANCES ARE MAINTAINED.
  - ANY WALLS, CEILINGS, EQUIPMENT, ETC., DAMAGED BY THE CONTRACTOR IN CONSTRUCTION OF THIS PROJECT SHALL BE REPAIRED, RESTORED AND/OR REPLACED BY THE CONTRACTOR TO ITS ORIGINAL CONDITION, OR TO PERFORM ITS INTENDED FUNCTION, AT NO ADDITIONAL COST TO OWNER.
  - ELECTRICAL CONTRACTOR SHALL ENSURE INSTALLED OCCUPANCY SENSORS PROVIDE A FULL RANGE COVERAGE WITHIN THE CONTROLLED AREA.
  - CONTRACTOR CONFIRM WITH MANUFACTURER THAT LIGHT FIXTURES AND ASSOCIATED LIGHTING CONTROLS ARE COMPATIBLE WITH EACH OTHER.
  - PROVIDE UNSWITCHED HOT TO ALL EMERGENCY, EGRESS, AND NIGHT LIGHT FIXTURES. FOR FIXTURES WITH BATTERY BALLASTS OR INVERTERS, THE UNSWITCHED HOT TO BALLAST OR INVERTER, NOT THE FIXTURE ITSELF.
  - SEE ARCHITECTURAL DRAWINGS FOR ANY UNLISTED MOUNTING HEIGHTS FOR LIGHTS, DEVICES, AND EQUIPMENT.

- ELECTRICAL KEYED NOTES:**
- FIXTURES LOCATED ON MEZZANINE LEVEL.
  - LIGHT SWITCH TO CONTROL FIXTURES ON MEZZANINE LEVEL.

**1**  
**E2.1J** MAINTENANCE FACILITY FLOOR PLAN - LIGHTING  
1/4" = 1'-0"