

**Walton County  
The Grove**

**Change Proposal #3 –  
Monument Sign Scope Removal**

**General Contractor:**

**Reeves Young  
45 Peachtree Industrial Boulevard N.W.  
Sugar Hill, GA 30518  
770-271-1159**



November 12, 2024

Walton County, GA  
The Grove, a Walton County Parks & Recreation Facility

Attn: John Ward, County Manager  
Jeff Prine, Capital Project Manager – Ascension Program Management

**Change Proposal #3 – Monument Sign Scope Removal**

The below change proposal is for the material credit for the monument sign that was removed from RY’s SOW. Please see the breakdown and supporting documentation for your reference.

Description	Qty	Unit	Unit Price	Total
CONCRETE & REBAR - MATERIAL	1	EA	(\$753.75)	(\$753.75)
CONCRETE & REBAR - LABOR	1	EA	(\$995.00)	(\$995.00)
CAST STONE COL. CAP - MATERIAL	2	EA	(\$178.00)	(\$356.00)
MASONRY - LABOR	1	EA	(\$660.00)	(\$660.00)
LED + HDU SIGNAGE – MATERIAL AND LABOR	1	EA	(\$43,758.30)	(\$43,758.30)
STEEL – MATERIAL AND LABOR	1	EA	(\$7,064)	(\$7,064)
<b>TOTAL CREDIT</b>				<b>(\$53,587.05)</b>

If you have any questions or require any additional information, please do not hesitate to contact us at (470) 725-0022 or via email at [iarnold@reevesyoung.com](mailto:iarnold@reevesyoung.com).

Sincerely,  
Reeves Young, LLC

Isaiah Arnold

Project Manager

## Approval

Lose Design (Architect of Record)      Signature:       Date: 11/14/2024

Ascension PM (Capital Project Manager)      Signature: Thomas J. Prine      Date: 11.14.2024

Walton County      Signature: \_\_\_\_\_      Date: \_\_\_\_\_

# PORTER STEEL INC

EST 1983

CHANGE ORDER PROPOSAL # 03

JOB NO.: 23-0085

DATE: 9/20/2024

SUBMITTED TO: Reeves Young

JOB NAME: The Grove

ATTENTION: Isaiah Arnold

LOCATION: Loganville, GA

PORTER STEEL, INC. proposes to,

Furnish and install entrance sign steel.

**INCLUDED IN SCOPE:**

- \*HSS6x6x3/8" posts with PL3/4"-12x12 baseplates
- \*HSS8x6x3/8 beam - rolled to 50'R - capped each end
- \*C4x7.2 Sign support channel
- \*HSS3x3x1/4 Support base with epoxy anchors
- \*Detail approval drawings

**FURNISH ONLY:**

- \*8 EA - 3/4x16" Anchor Bolts - Installed by others

**NOTE:**

All steel furnished with 1 coat shop primer

**EXCLUDED:**

- Any work not listed above
- Concrete cutting / coring
- Specialty coatings
- AESS

Material & Fabrication: **\$5,646.00**  
Install: **\$1,418.00**  
**TOTAL COST: \$7,064.00**

\*Price good for 15 days

**\*\*NOTE: Acceptance must be received by Porter Steel, Inc prior to proceeding with work.**

SIGNATURE BELOW SIGNIFIES THE ACCEPTANCE OF THIS PROPOSAL IN ITS ENTIRETY.

Porter Steel, Inc.

Accepted for:

NAME Chris Doncer  
EMAIL [cdoncer@portersteel.com](mailto:cdoncer@portersteel.com)  
TITLE Director of Project Management  
DATE September 20, 2024

SIGNATURE \_\_\_\_\_  
NAME \_\_\_\_\_  
TITLE \_\_\_\_\_  
DATE \_\_\_\_\_

The way to grow your business  
Signarama Roswell  
Signarama Roswell

Payment Terms: 50% down/Balance at Comp

**DESCRIPTION:** The Grove, Loganville - Monument Signage

**Bill To:** Reeves Young  
45 Peachtree Industrial Blvd  
Sugar Hill, GA 30058  
US

**Installed:** Reeves Young  
The Grove  
1089 Hwy 81  
Loganville, GA 30052  
US

**Requested By:** Isaiah Arnold  
Email: IArnold@reevesyoung.com  
Work Phone: (770) 271-1159  
Cell Phone: (470) 725-0022

**Salesperson:** Erin Little  
Email: erin@signarama-roswell.com

NO.	Product Summary	QTY	UNIT PRICE	AMOUNT
1	<p>Monument Signage</p> <p><b>MONUMENT SIGNAGE :</b></p> <p><b>LED SIGNAGE:</b> Includes (2) 3ft x 7ft Watchfire LED Displays, overall cabinet size at 3'5"h x 7'3"w x 5"d, 10mm LED RGB display, Includes Web Based software and training with 4G wireless and Watchfire Cellular Data Plan, Front ventilation</p> <p>Includes Installation onto both sides of customer provided structure</p> <p><b>HDU SIGNAGE:</b> Includes (2) 4'h x 10'w x 2" Deep single sided Recessed Carved HDU panels, assumes 1 custom color match and white painted graphics</p> <p>Includes Installation sandwiched together over customer provided posts and mechanically fastened</p> <p><b>INCLUDES MONUMENT SIGN PERMIT:</b> <i>*Price assumes no engineered stamped drawings will be required, or additional costs may apply</i></p> <p><i>*Customer is responsible for Monument Structure</i></p>	1	\$43,758.30	\$43,758.30

**\*Customer is responsible for providing electrical to the sign area and any electrical permits required**

**\*Price is subject to change based on final signage design and artwork**

50% deposit due with order. Balance due at time of job completion. Sign remains property of Signarama until balance is paid in full.

The pricing in this quote shall remain valid for 90 days. If an order is not placed within that time, prices are subject to change.

<b>Subtotal:</b>	\$43,758.30
<b>Taxes:</b>	\$3,148.31
<b>Grand Total:</b>	\$46,906.61
<b>Deposit Required:</b>	\$23,453.31

***Get this for as little as \$1674.57 per month. Ask us for details.***

**Signature:** \_\_\_\_\_ **Date:** \_\_\_\_\_

Please contact us with any questions.



**CHANGE ORDER REQUEST**

**TO: REEVES YOUNG**

**FROM: MONTALVO COMPANY, INC.**  
 1546 LAKE KOINONIA DR.  
 WOODSTOCK, GA 30189

PHONE: 404-664-6266  
 FAX: 770-517-1157

**PROJECT: THE GROVE - WALTON CO.**  
 1089 HWY 81  
 LOGANVILLE, GA 30052

TICKET # 3  
 DATE: 9/24/2024

**DESCRIPTION: REMOVE CONCRETE & MASONRY AT ENTRY SIGN**

**\* MASONRY MATERIALS HAVE ALREADY BEEN PURCHASED \***

QUANTITY	UNIT	DESCRIPTION	UNIT PRICE		TOTALS
1.00	EA	CONCRETE & REBAR - MATERIAL	\$	(753.75)	EA \$ (753.75)
1.00	EA	CONCRETE & REBAR - LABOR	\$	(995.00)	EA \$ (995.00)
2.00	EA	CAST STONE COL. CAP - MATERIAL	\$	(178.00)	EA \$ (356.00)
1.00	EA	MASONRY - LABOR	\$	(660.00)	EA \$ (660.00)

**TOTAL AMOUNT = \$ (2,764.75)**

CO  
 TICKET 3

PRESENTED BY:

ACCEPTED BY:

\_\_\_\_\_  
 CHUCK RUTHERFOORD  
 MONTALVO COMPANY, INC.

\_\_\_\_\_

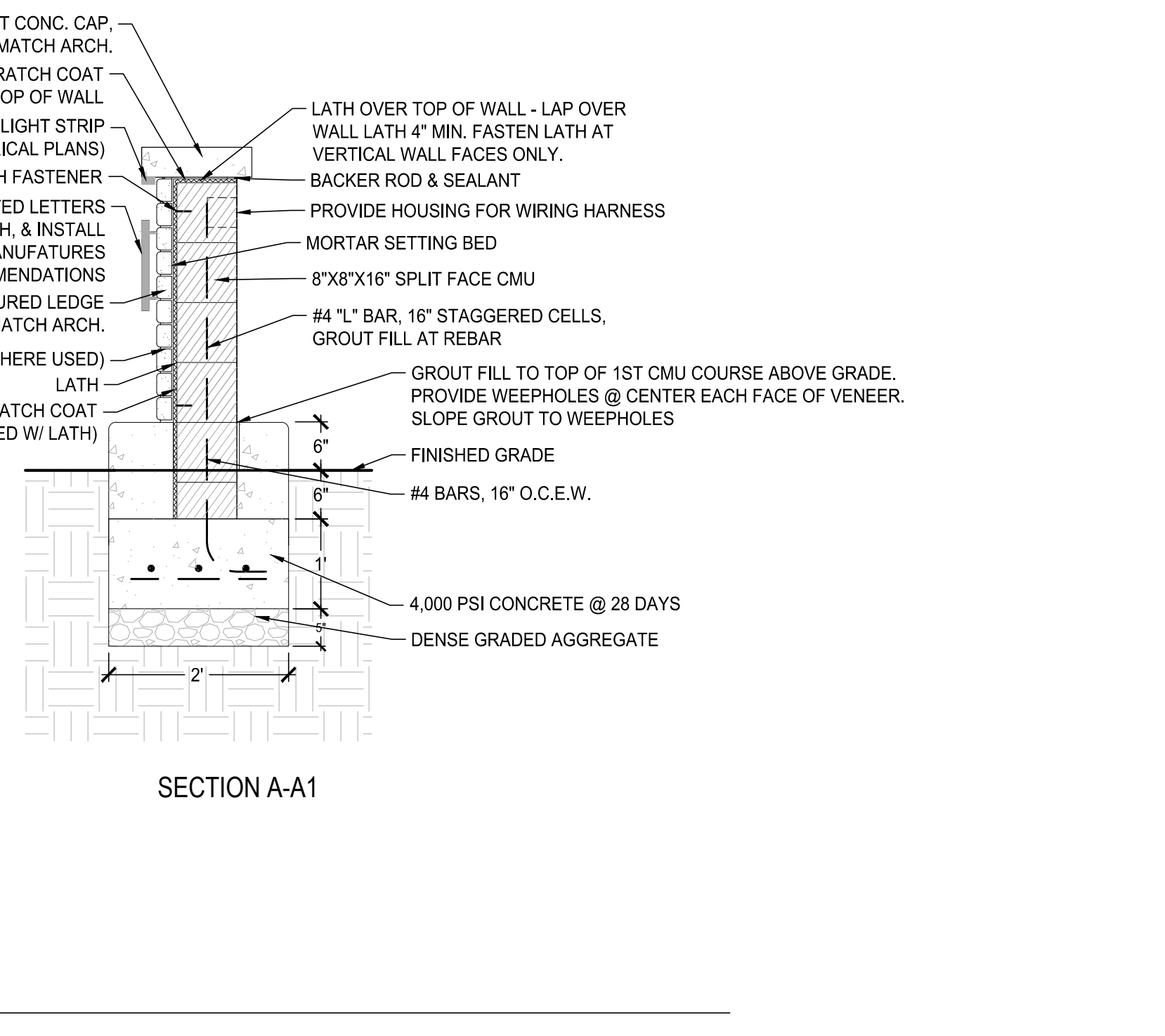
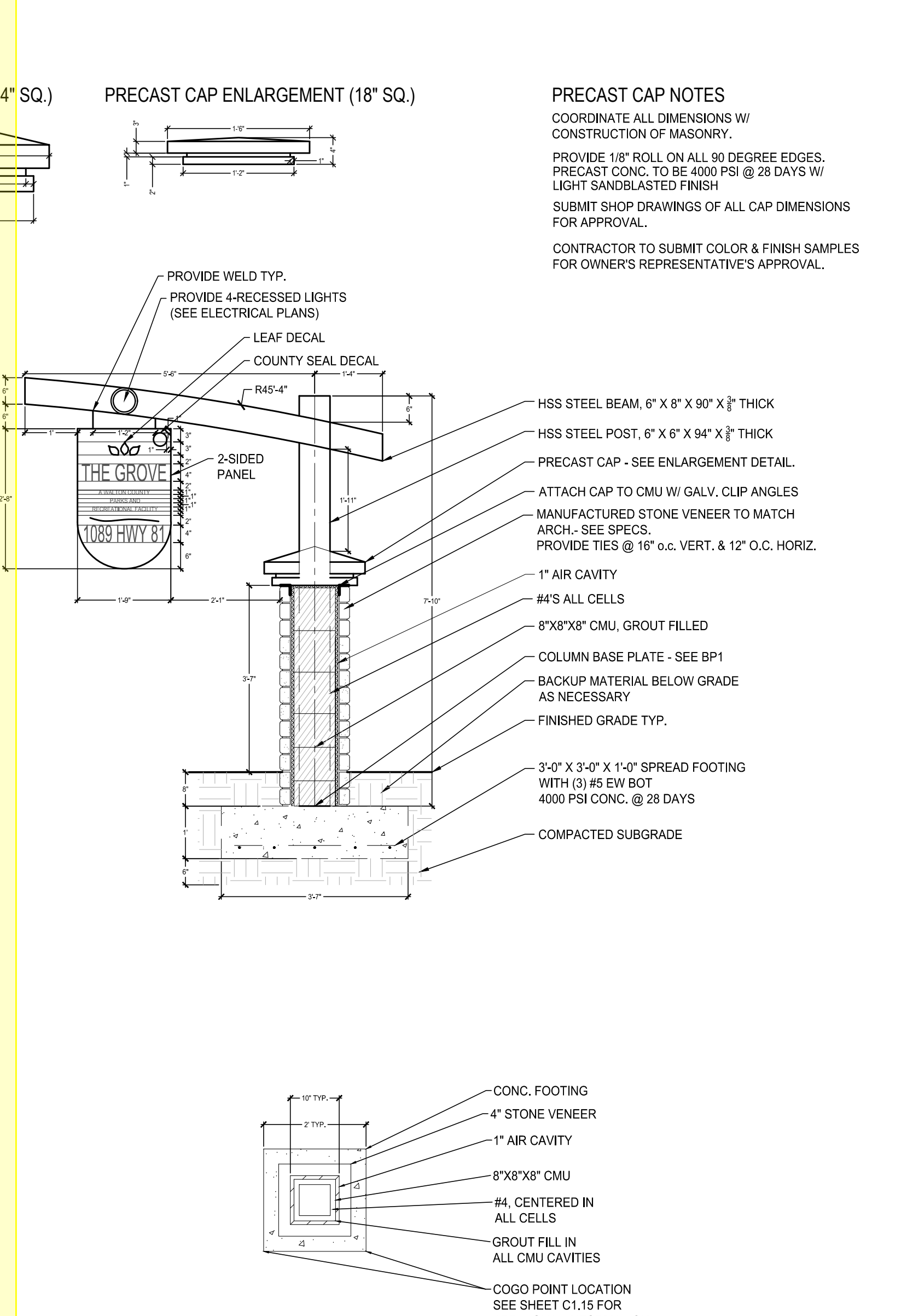
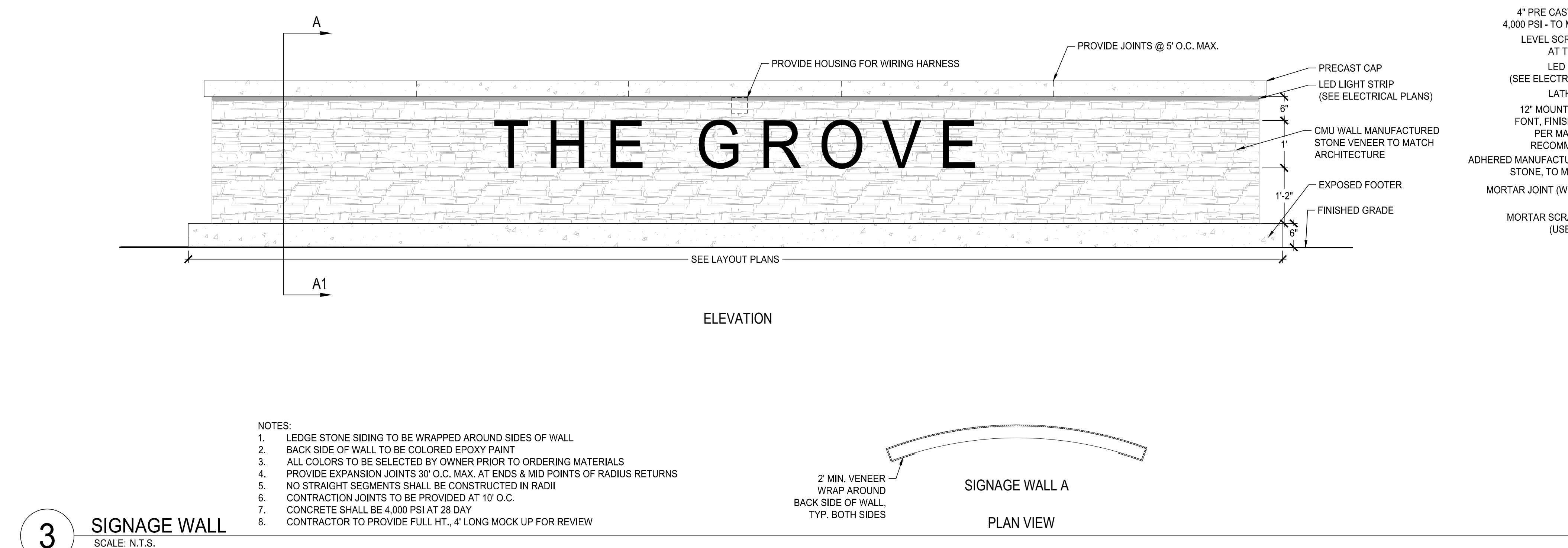
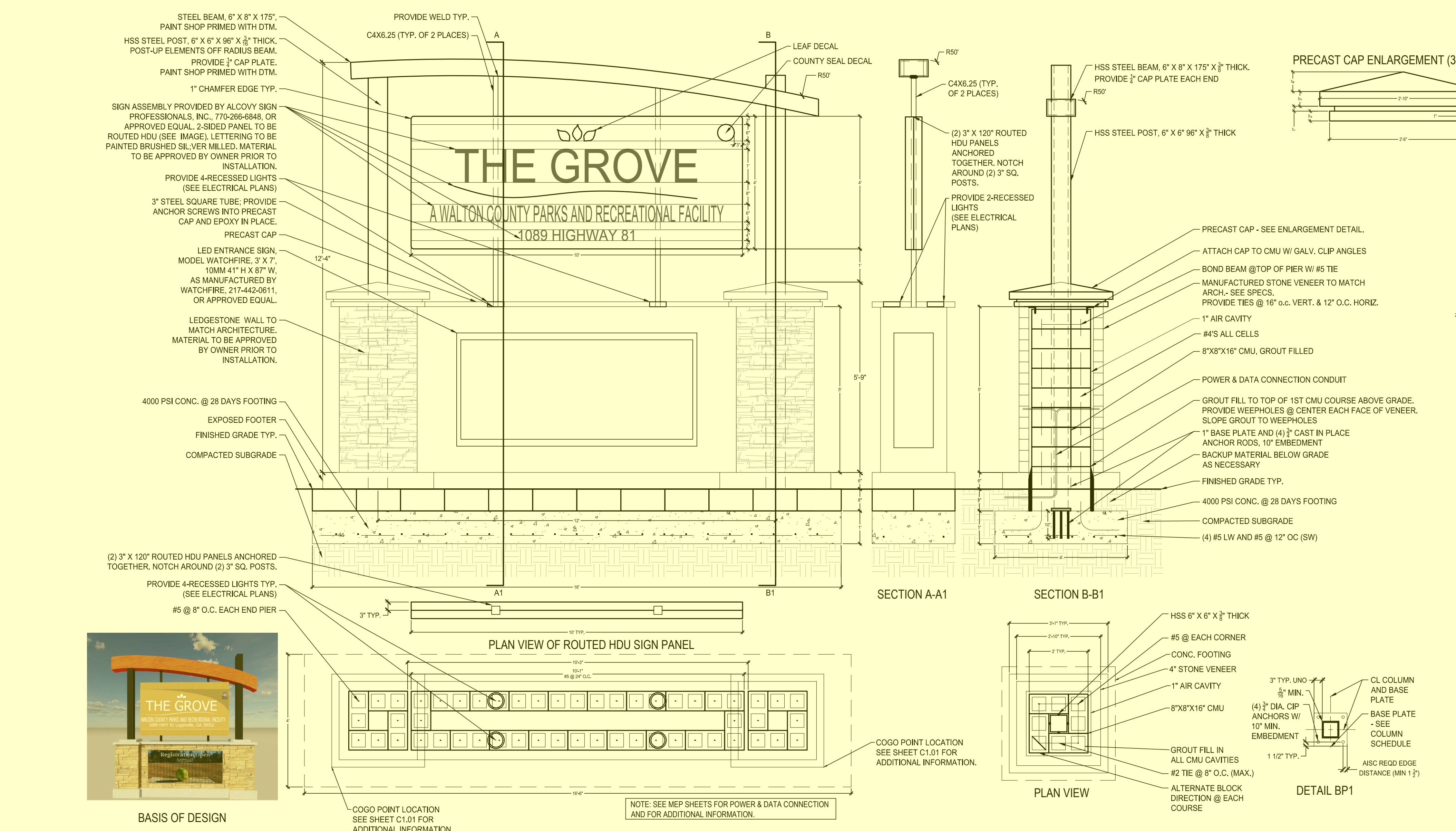
SUBMITTALS / REVISIONS		
NO.	DATE	DESCRIPTION
C1	03/15/2024	CONFORMED SET

CONSTRUCTION DOCUMENTS		
SHEET TITLE		
DETAIL SERIES		

CONSTRUCTION DOCUMENTS		
SHEET TITLE		
DETAIL SERIES		

CONSTRUCTION DOCUMENTS		
SHEET TITLE		
DETAIL SERIES		

PROJECT NO. 22010	DATE 03/22/2023
DRAWN BY SAD/MJC	SCALE NTS
CHECKED BY ASP	
SHEET NO.	



STEEL BEAM, 6" X 8" X 175", PAINT SHOP PRIMED WITH DTM.  
HSS STEEL POST, 6" X 6" X 96" X 3/8" THICK, POST-UP ELEMENTS OFF RADIUS BEAM.  
PROVIDE 1/2" CAP PLATE, PAINT SHOP PRIMED WITH DTM.  
1" CHAMFER EDGE TYP.  
SIGN ASSEMBLY PROVIDED BY ALCOVY SIGN PROFESSIONALS, INC., 770-266-8848, OR APPROVED EQUAL. 2-SIDED PANEL TO BE ROUTED HDU (SEE IMAGE), LETTERING TO BE PAINTED BRUSHED SILVER MILLED, MATERIAL TO BE APPROVED BY OWNER PRIOR TO INSTALLATION.  
PROVIDE 4-RECESSED LIGHTS (SEE ELECTRICAL PLANS)  
3" STEEL SQUARE TUBE; PROVIDE ANCHOR SCREWS INTO PRECAST CAP AND EPOXY IN PLACE.  
PRECAST CAP  
LED ENTRANCE SIGN, MODEL WATCHFIRE, 3" X 7", 10MM 4" H X 37" W, AS MANUFACTURED BY WATCHFIRE, 217-442-0611, OR APPROVED EQUAL.  
LEDGESTONE WALL TO MATCH ARCHITECTURE MATERIAL TO BE APPROVED BY OWNER PRIOR TO INSTALLATION.  
4000 PSI CONC. @ 28 DAYS FOOTING  
EXPOSED FOOTER  
FINISHED GRADE TYP.  
COMPACTED SUBGRADE  
(2) 3" X 120" ROUTED HDU PANELS ANCHORED TOGETHER, NOTCH AROUND (2) 3" SQ. POSTS.  
PROVIDE 4-RECESSED LIGHTS TYP. (SEE ELECTRICAL PLANS)  
#5 @ 8" O.C. EACH END PIER

PROVIDE WELD TYP. C4X8.25 (TYP. OF 2 PLACES)  
LEAF DECAL  
COUNTY SEAL DECAL  
R50'  
C4X8.25 (TYP. OF 2 PLACES)  
(2) 3" X 120" ROUTED HDU PANELS ANCHORED TOGETHER, NOTCH AROUND (2) 3" SQ. POSTS.  
PROVIDE 2-RECESSED LIGHTS (SEE ELECTRICAL PLANS)  
HSS STEEL BEAM, 6" X 8" X 175" X 3/8" THICK, PROVIDE 1/2" CAP PLATE EACH END  
R50'  
HSS STEEL POST, 6" X 6" X 96" X 3/8" THICK  
PRECAST CAP ENLARGEMENT (34" SQ.)  
PRECAST CAP ENLARGEMENT (18" SQ.)  
PRECAST CAP - SEE ENLARGEMENT DETAIL  
ATTACH CAP TO CMU W/ GALV. CLIP ANGLES  
BOND BEAM @ TOP OF PIER W/ #5 TIE  
MANUFACTURED STONE VENEER TO MATCH ARCH. - SEE SPECS.  
PROVIDE TIES @ 16" O.C. VERT. & 12" O.C. HORIZ.  
1" AIR CAVITY  
#4'S ALL CELLS  
8"X8"X8" CMU, GROUT FILLED  
POWER & DATA CONNECTION CONDUIT  
GROUT FILL TO TOP OF 1ST CMU COURSE ABOVE GRADE, PROVIDE WEEPHOLES @ CENTER EACH FACE OF VENEER, SLOPE GROUT TO WEEPHOLES  
1" BASE PLATE AND (4) 3/8" CAST IN PLACE ANCHOR RODS, 10" EMBEDMENT  
BACKUP MATERIAL BELOW GRADE AS NECESSARY  
FINISHED GRADE TYP.  
4000 PSI CONC. @ 28 DAYS FOOTING  
COMPACTED SUBGRADE  
(4) #5 LW AND #5 @ 12" OC (SW)

PROVIDE WELD TYP. PROVIDE 4-RECESSED LIGHTS (SEE ELECTRICAL PLANS)  
LEAF DECAL  
COUNTY SEAL DECAL  
R45-4"  
2-SIDED PANEL  
HSS STEEL BEAM, 6" X 8" X 90" X 3/8" THICK  
HSS STEEL POST, 6" X 6" X 94" X 3/8" THICK  
PRECAST CAP - SEE ENLARGEMENT DETAIL  
ATTACH CAP TO CMU W/ GALV. CLIP ANGLES  
MANUFACTURED STONE VENEER TO MATCH ARCH. - SEE SPECS.  
PROVIDE TIES @ 16" O.C. VERT. & 12" O.C. HORIZ.  
1" AIR CAVITY  
#4'S ALL CELLS  
8"X8"X8" CMU, GROUT FILLED  
COLUMN BASE PLATE - SEE BP1  
BACKUP MATERIAL BELOW GRADE AS NECESSARY  
FINISHED GRADE TYP.  
3'-0" X 3'-0" X 1'-0" SPREAD FOOTING WITH (3) #5 EW BOT  
4000 PSI CONC. @ 28 DAYS  
COMPACTED SUBGRADE

PLAN VIEW OF ROUTED HDU SIGN PANEL  
COGO POINT LOCATION SEE SHEET C1.01 FOR ADDITIONAL INFORMATION.  
NOTE: SEE MEP SHEETS FOR POWER & DATA CONNECTION AND FOR ADDITIONAL INFORMATION.

PLAN VIEW  
HSS 6" X 6" X 3/8" THICK  
#5 @ EACH CORNER  
CONC. FOOTING  
4" STONE VENEER  
1" AIR CAVITY  
8"X8"X8" CMU  
GROUT FILL IN ALL CMU CAVITIES  
#2 TIE @ 8" O.C. (MAX.)  
ALTERNATE BLOCK DIRECTION @ EACH COURSE  
DETAIL BP1  
CL COLUMN AND BASE PLATE  
BASE PLATE - SEE COLUMN SCHEDULE  
AISC REDD EDGE DISTANCE (MIN 1/2")  
1 1/2" TYP.  
3" TYP. UND  
5/8" MIN.  
(4) 3/8" DIA. CIP ANCHORS W/ 10" MIN. EMBEDMENT

CONC. FOOTING  
4" STONE VENEER  
1" AIR CAVITY  
8"X8"X8" CMU  
#4, CENTERED IN ALL CELLS  
GROUT FILL IN ALL CMU CAVITIES  
COGO POINT LOCATION SEE SHEET C1.15 FOR ADDITIONAL INFORMATION.

ELEVATION  
PROVIDE HOUSING FOR WIRING HARNESS  
PROVIDE JOINTS @ 5' O.C. MAX.  
PRECAST CAP  
LED LIGHT STRIP (SEE ELECTRICAL PLANS)  
CMU WALL MANUFACTURED STONE VENEER TO MATCH ARCHITECTURE  
EXPOSED FOOTER  
FINISHED GRADE  
SEE LAYOUT PLANS  
PLAN VIEW  
2" MIN. VENEER WRAP AROUND BACK SIDE OF WALL, TYP. BOTH SIDES  
SIGNAGE WALL A

SECTION A-A1  
4" PRE CAST CONC. CAP, 4,000 PSI - TO MATCH ARCH.  
LEVEL SCRATCH COAT AT TOP OF WALL  
LED LIGHT STRIP (SEE ELECTRICAL PLANS)  
LATH FASTENER  
12" MOUNTED LETTERS FONT, FINISH, & INSTALL PER MANUFACTURES RECOMMENDATIONS  
ADHERED MANUFACTURED LEDGE STONE, TO MATCH ARCH.  
MORTAR JOINT (WHERE USED)  
LATH  
MORTAR SCRATCH COAT (USED W/ LATH)  
LATH OVER TOP OF WALL - LAP OVER WALL LATH 4" MIN. FASTEN LATH AT VERTICAL WALL FACES ONLY.  
BACKER ROD & SEALANT  
PROVIDE HOUSING FOR WIRING HARNESS  
MORTAR SETTING BED  
8"X8"X16" SPLIT FACE CMU  
#4 "L" BAR, 16" STAGGERED CELLS, GROUT FILL AT REBAR  
GROUT FILL TO TOP OF 1ST CMU COURSE ABOVE GRADE, PROVIDE WEEPHOLES @ CENTER EACH FACE OF VENEER, SLOPE GROUT TO WEEPHOLES  
FINISHED GRADE  
#4 BARS, 16" O.C.E.W.  
4,000 PSI CONCRETE @ 28 DAYS  
DENSE GRADED AGGREGATE

NOTES:  
1. LEDGE STONE SIDING TO BE WRAPPED AROUND SIDES OF WALL  
2. BACK SIDE OF WALL TO BE COLORED EPOXY PAINT  
3. ALL COLORS TO BE SELECTED BY OWNER PRIOR TO ORDERING MATERIALS  
4. PROVIDE EXPANSION JOINTS 30' O.C. MAX. AT ENDS & MID POINTS OF RADIUS RETURNS  
5. NO STRAIGHT SEGMENTS SHALL BE CONSTRUCTED IN RADII  
6. CONTRACTION JOINTS TO BE PROVIDED AT 10' O.C.  
7. CONCRETE SHALL BE 4,000 PSI AT 28 DAY  
8. CONTRACTOR TO PROVIDE FULL HT., 4' LONG MOCK UP FOR REVIEW