

**RESOLUTION OF
THE JOINT DEVELOPMENT AUTHORITY OF
JASPER COUNTY, MORGAN COUNTY,
NEWTON COUNTY AND WALTON COUNTY**

**RE: Stanton Springs North Addition of
1,943 acres**

WHEREAS, the Joint Development Authority of Jasper County, Morgan County, Newton County and Walton County, hereinafter the “Authority”, was duly formed under the Development Authorities Law, O.C.G.A. §36-62-1 *et seq.*; and

WHEREAS, on October 18, 2000, the Authority acquired an approximately 1,528-acre site south of Interstate 20, which site is located in Morgan, Newton, and Walton Counties and which site has been expanded to now total approximately 1,635 acres, all in order to further the development of a research park known as Stanton Springs (“Stanton Springs”); and

WHEREAS, the Authority secured three industrial tenants, Takeda, Morning Hornet and Baymare, which tenants currently utilize the majority of property in Stanton Springs; and

WHEREAS, the Authority continued its mission of bringing jobs and tax revenues to the region by purchasing approximately 666 acres north of Interstate 20 and establishing it as the first property in a sister development park known as Stanton Springs North by Resolution dated June 22, 2021; and

WHEREAS, by the June 22, 2021, Resolution, the Authority designated the approx. 666 acres as being located in Stanton Springs North for purposes of the land being subject to certain intergovernmental agreements; and

WHEREAS, the Authority entered into an Intergovernmental Contract with eighteen other parties, the last version of which is dated November 16, 2021, which addresses how revenues generated from Stanton Springs and Stanton Springs North are assessed, collected and distributed (the “Revenue Sharing Agreement”); and

WHEREAS, the Revenue Sharing Agreement, in Section 3(o) thereof, also specifically contemplates and allows the Authority to expand the boundaries of Stanton Springs North by adopting a Resolution which specifies the property and includes a legal description thereof; and

WHEREAS, in May through August of 2022, the Authority purchased approximately 1,277 acres north of Interstate 20 which adjoins the approximately 666 acres it purchased in 2021 which properties total approximately 1,943 acres (the “Property”); and

WHEREAS, on September 2, 2022, the Authority conveyed the entire Property to the State

controls over the Property; and

WHEREAS, pursuant to Section 3(o) of the November 16, 2021 Revenue Sharing Agreement the Authority desires to deem the Property to be within Stanton Springs North.

NOW, THEREFORE, BE IT RESOLVED, by the Board of Directors of the Authority, as follows:

1. The Property described in Exhibits "A" and "C" and depicted on Exhibits "B" and "D" consisting of approximately 1,943 acres bounded by Interstate 20 to the South and Hwy 278 to the West is hereby deemed to be within Stanton Springs North.
2. The Property has been consolidated into three parcels in Walton County and two Parcels in Morgan County. The individual tax identification numbers for all the Property prior to consolidation are attached hereto as Exhibit "A".
3. The survey of the Property is attached hereto as Exhibit "B".
4. The legal description of the Property is attached hereto as Exhibit "C".
5. The recorded combination plats are attached hereto as Exhibit "D".
6. The Property shall be governed by all Intergovernmental Agreements currently in existence or adopted hereafter which pertain to Stanton Springs North unless otherwise specified therein.
7. A copy of this Resolution with Exhibits shall be provided to the City of Social Circle, each of the four member Counties and all other parties to the Revenue Sharing Agreement.

SO RESOLVED this 22nd day of November 2022.

The Joint Development Authority of Jasper County, Morgan County,
Newton County and Walton County

By: _____

Jerry Silvio
Jerry Silvio, Chairman

Attest: _____

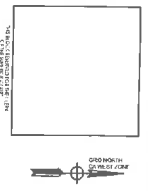
David Thompson
David Thompson, Secretary



Exhibit "A"

Parcel Identification Numbers prior to combination plat

	<u>Parcel No</u>	<u>County</u>
1	13016	Morgan
2	013018B	Morgan
3	013 017	Morgan
4	013018C	Morgan
5	013018D	Morgan
6	013018E	Morgan
7	013018A	Morgan
8	13018	Morgan
9	013003C	Morgan
10	013003E	Morgan
11	013 011 B	Morgan
12	013 011 C	Morgan
13	013003A	Morgan
14	013003B	Morgan
15	C1730001	Walton
16	C1730007	Walton
17	C1730006	Walton
18	C1740004	Walton
19	013 007	Morgan
20	C1740005	Walton
21	013 009	Morgan
22	C1740006	Walton
23	013 0009A	Morgan
24	C1740003	Walton
25	C17300035	Walton
26	C1730005A	Walton
27	C1730002	Walton
28	C1730003	Walton
29	C1730009	Walton
30	C1730008	Walton
31	013011A	Morgan
32	13003	Morgan
33	013003D	Morgan
34	13011	Morgan
35	C173 0010	Walton
36	13005	Morgan
37	C1743004	Walton
38	13012	Morgan
39	13013	Morgan
40	13026	Morgan
41	13026C	Morgan
42	1590001	Walton
43	13019	Morgan
44	13020	Morgan



ACREAGE CHART
 TRACT 1 - 1,839.9 AC.
 TRACT 2 - 1,387.204 AC.
 TRACT 3 - 1,387.204 AC.
 TRACT 4 - 1,387.204 AC.
TOTAL ACREAGE - 19,812.0 AC.

1. ALL LOTS ARE TO BE CONVEYED TO THE BUYER BY THE SELLER.
 2. THE BUYER SHALL BE RESPONSIBLE FOR OBTAINING ALL NECESSARY PERMITS AND APPROVALS FROM THE APPROPRIATE AGENCIES.
 3. THE BUYER SHALL BE RESPONSIBLE FOR OBTAINING ALL NECESSARY UTILITIES AND SERVICES.
 4. THE BUYER SHALL BE RESPONSIBLE FOR OBTAINING ALL NECESSARY EASEMENTS AND RIGHTS OF WAY.
 5. THE BUYER SHALL BE RESPONSIBLE FOR OBTAINING ALL NECESSARY RECORDS AND DOCUMENTS.

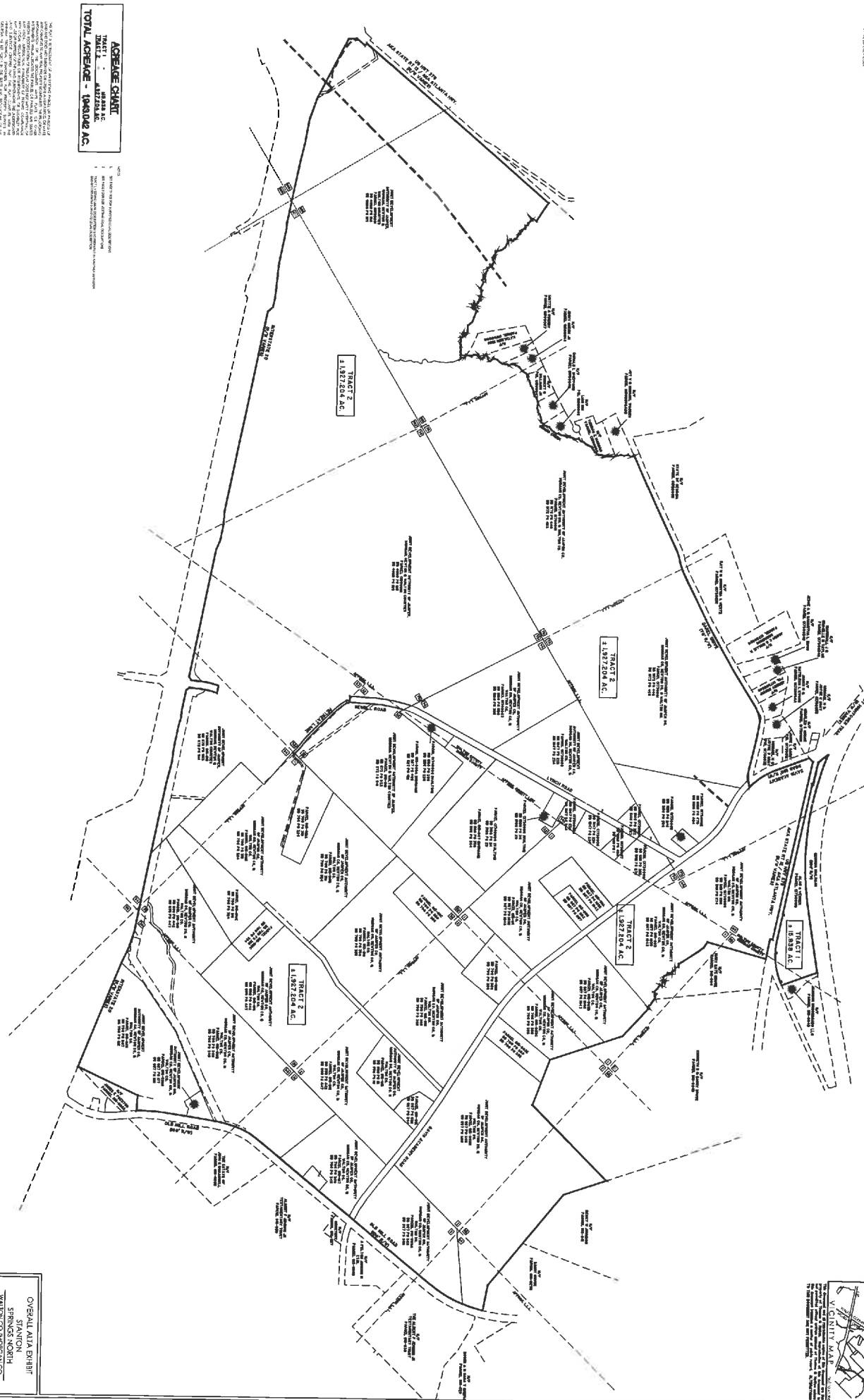


Exhibit "B"



OVERALL ATLA EXHIBIT
 STATION
 SPRINGS-NORTH
 WALTON COUNTY, GEORGIA
 PREPARED FOR
 JAY DEVOR
 NEWTON & WALTON CO.
 WALTON COUNTY, GEORGIA

LEGAL DESCRIPTION OF THE LANDTract One:

All that tract or parcel of land lying and being in Land Lots 44 and 73 of the 1st District, Walton County, and in Land Lot 16 of the 20th District, Morgan County, Georgia and being more particularly described as follows:

Beginning at a 1/2 inch rebar found at the intersection of the northwestern right-of-way line of Old Atlanta Highway (60' R/W) and the northeastern right of way line of U.S. Highway 278 (R/W varies), also known as Atlanta Highway, said rebar being THE TRUE POINT OF BEGINNING;

THENCE traveling along said right-of-way line U.S. Highway 278, with the arc of a curve turning to the right, having an arc length of 608.91 feet, a radius of 924.93 feet, a chord length of 597.97 feet, and a chord bearing South 83 degrees 01 minutes 54 seconds West to a 1/2 inch rebar set;

THENCE North 78 degrees 06 minutes 32 seconds West a distance of 2126.13 feet to a 1/2 inch rebar set;

THENCE North 11 degrees 32 minutes 45 seconds East a distance of 10.00 feet to a 1/2 inch rebar set;

THENCE North 78 degrees 07 minutes 15 seconds West a distance of 297.92 feet to a 1/2 inch rebar set on the northeastern right-of-way line of East Hightower Trail (R/W varies);

THENCE traveling along said right-of-way line of East Hightower Trail North 38 degrees 42 minutes 20 seconds West a distance of 168.52 feet to a 1/2 inch rebar set on the southern right-of-way line of Georgia Railroad (200' R/W);

THENCE traveling along said right-of-way line of Georgia Railroad, with the arc of a curve turning to the left, having an arc length of 2090.23 feet, a radius of 3907.67 feet, a chord length of 2065.40 feet, and a chord bearing South 83 degrees 39 minutes 14 seconds East to a 1/2 inch rebar set;

THENCE North 81 degrees 01 minutes 20 seconds East a distance of 854.20 feet to a 1/2 inch rebar found;

THENCE leaving Georgia Railroad and proceeding South 20 degrees 01 minutes 41 seconds East a distance of 503.64 feet to a 1/2 inch rebar found, said 1/2 inch rebar found being THE TRUE POINT OF BEGINNING.

The above described tract contains 15.838 acres.

Tract Two:

All that tract or parcel of land lying and being in the 1st Land District, GMD 418, Land Lots 44, 73, 74, 75, 76, 101, 102, and 106, Walton County, Georgia, also lying and being in the 19th Land District, GMD 282, Land Lots 1, 2, 3, 14, 15, 16, 30, 31, 32, 33, and 34, Morgan County, Georgia, and being more particularly described as follows:

Beginning a 1/2" rebar set at the northeasternmost intersection of the northeastern right-of-way line of Davis Academy Road (80' R/W), and the southern right-of-way line of US Hwy. 278 (R/W varies), said rebar being THE TRUE POINT OF BEGINNING;

THENCE traveling southeasterly along the right-of-way of US Hwy. 278, South 78 degrees 06 minutes 32 seconds East a distance of 2417.38 feet to a point;

THENCE South 11 degrees 47 minutes 19 seconds West a distance of 35.00 feet to a point;

THENCE with the arc of a curve turning to the left, having an arc length of 271.71 feet, a radius of 11524.16 feet, a chord length of 271.71 feet, and a chord bearing South 78 degrees 53 minutes 13 seconds East to a rebar set;

THENCE leaving said right-of-way line of US Hwy. 278, South 15 degrees 27 minutes 13 seconds West a distance of 802.53 feet to a point, said point being located in the centerline of a creek;

THENCE traveling southeasterly along the centerline of said creek, South 56 degrees 15 minutes 16 seconds East a distance of 87.24 feet to a point;

THENCE South 36 degrees 34 minutes 26 seconds East a distance of 86.69 feet to a point;

THENCE South 34 degrees 09 minutes 59 seconds East a distance of 158.20 feet to a point;

THENCE South 32 degrees 14 minutes 07 seconds East a distance of 106.72 feet to a point;

THENCE South 30 degrees 40 minutes 40 seconds East a distance of 41.74 feet to a point;

THENCE South 81 degrees 07 minutes 36 seconds East a distance of 43.85 feet to a point;

THENCE South 13 degrees 42 minutes 45 seconds East a distance of 41.58 feet to a point;

THENCE South 85 degrees 48 minutes 46 seconds East a distance of 19.06 feet to a point;

THENCE South 45 degrees 33 minutes 04 seconds East a distance of 49.38 feet to a point;

THENCE South 79 degrees 14 minutes 52 seconds East a distance of 17.74 feet to a point;

THENCE South 27 degrees 05 minutes 10 seconds East a distance of 12.28 feet to a point;

THENCE South 31 degrees 41 minutes 03 seconds West a distance of 14.80 feet to a point;

THENCE South 04 degrees 27 minutes 06 seconds East a distance of 29.00 feet to a point;

THENCE South 52 degrees 15 minutes 51 seconds East a distance of 42.06 feet to a point;

THENCE South 11 degrees 59 minutes 55 seconds East a distance of 19.58 feet to a point;

THENCE South 54 degrees 33 minutes 17 seconds East a distance of 29.63 feet to a point;

THENCE South 87 degrees 11 minutes 44 seconds East a distance of 32.86 feet to a point;

THENCE North 49 degrees 40 minutes 27 seconds East a distance of 11.12 feet to a point;

THENCE North 07 degrees 58 minutes 31 seconds East a distance of 13.04 feet to a point;

THENCE South 86 degrees 36 minutes 52 seconds East a distance of 16.85 feet to a point;

THENCE South 03 degrees 28 minutes 34 seconds West a distance of 12.98 feet to a point;
THENCE South 43 degrees 40 minutes 28 seconds East a distance of 21.27 feet to a point;
THENCE South 78 degrees 45 minutes 21 seconds East a distance of 35.70 feet to a point;
THENCE South 30 degrees 19 minutes 43 seconds West a distance of 26.43 feet to a point;
THENCE South 57 degrees 26 minutes 10 seconds East a distance of 63.82 feet to a point;
THENCE South 44 degrees 01 minutes 43 seconds East a distance of 63.59 feet to a point;
THENCE North 39 degrees 57 minutes 44 seconds East a distance of 41.31 feet to a point;
THENCE South 66 degrees 01 minutes 00 seconds East a distance of 38.96 feet to a point;
THENCE North 82 degrees 21 minutes 05 seconds East a distance of 16.47 feet to a point;
THENCE South 56 degrees 21 minutes 26 seconds East a distance of 80.80 feet to a point;
THENCE South 56 degrees 03 minutes 05 seconds East a distance of 24.83 feet to a point;
THENCE South 39 degrees 31 minutes 32 seconds East a distance of 25.54 feet to a point;
THENCE South 64 degrees 55 minutes 33 seconds East a distance of 27.28 feet to a point;
THENCE leaving said creek centerline, North 49 degrees 01 minutes 33 seconds East a distance of 11.46 feet to a point;
THENCE South 48 degrees 00 minutes 21 seconds East a distance of 503.25 feet to a 1/2" rebar found;
THENCE South 18 degrees 47 minutes 05 seconds East a distance of 249.51 feet to a 1/2" rebar found;
THENCE South 18 degrees 47 minutes 35 seconds East a distance of 755.39 feet to a 3/4" open top pipe found;
THENCE South 69 degrees 33 minutes 26 seconds East a distance of 645.53 feet to a 1" angle-iron found;
THENCE North 44 degrees 53 minutes 38 seconds East a distance of 1410.76 feet to a 1/2" rebar found;
THENCE South 18 degrees 49 minutes 37 seconds East a distance of 595.29 feet to a 3/4" x 1-1/4" iron bar found;
THENCE South 50 degrees 55 minutes 50 seconds East a distance of 870.59 feet to a 1" rod found;
THENCE South 51 degrees 02 minutes 44 seconds East a distance of 695.87 feet to a rock found;
THENCE South 79 degrees 32 minutes 58 seconds East a distance of 344.74 feet to a 1/2" open top pipe found, said pipe being located on the western right-of-way line of Old Mill Road (100' R/W);
THENCE traveling southwesterly along the western right-of-way line of Old Mill Road, with the arc of a curve turning to the right, having an arc length of 281.83 feet, a radius of 2057.39 feet, a chord length of 281.61 feet, and a chord bearing South 17 degrees 16 minutes 07 seconds West to a 1/2" open top pipe found;

THENCE with a compound curve turning to the right, having an arc length of 413.42 feet, a radius of 1520.09 feet, a chord length of 412.15 feet, and a chord bearing South 29 degrees 06 minutes 14 seconds West to a point;

THENCE with a compound curve turning to the right, having an arc length of 239.73 feet, a radius of 5844.41 feet, a chord length of 239.71 feet, and a chord bearing South 38 degrees 04 minutes 45 seconds West to a point;

THENCE South 39 degrees 27 minutes 30 seconds West a distance of 671.84 feet to a point;

THENCE with the arc of a curve turning to the left, having an arc length of 137.75 feet, a radius of 14647.86 feet, a chord length of 137.75 feet, and a chord bearing South 39 degrees 43 minutes 40 seconds West to a point;

THENCE South 40 degrees 01 minutes 54 seconds West a distance of 356.54 feet to a 1/2" rebar found;

THENCE South 39 degrees 57 minutes 23 seconds West a distance of 82.80 feet to a point;

THENCE South 39 degrees 23 minutes 46 seconds West a distance of 522.08 feet to a 5/8" rebar found;

THENCE South 39 degrees 24 minutes 11 seconds West a distance of 284.25 feet to a 5/8" rebar found;

THENCE South 39 degrees 24 minutes 03 seconds West a distance of 390.67 feet to a 5/8" rebar found;

THENCE South 39 degrees 52 minutes 20 seconds West a distance of 205.23 feet to a point;

THENCE with the arc of a curve turning to the left, having an arc length of 247.91 feet, a radius of 4371.90 feet, a chord length of 247.88 feet, and a chord bearing South 38 degrees 14 minutes 52 seconds West to a point;

THENCE with a compound curve turning to the left, having an arc length of 255.97 feet, a radius of 857.89 feet, a chord length of 255.02 feet, and a chord bearing South 28 degrees 04 minutes 32 seconds West to a point;

THENCE with a compound curve turning to the left, having an arc length of 315.76 feet, a radius of 1810.97 feet, a chord length of 315.36 feet, and a chord bearing South 14 degrees 37 minutes 17 seconds West to a 1/2" rebar found;

THENCE with a compound curve turning to the left, having an arc length of 65.68 feet, a radius of 4551.96 feet, a chord length of 65.68 feet, and a chord bearing South 09 degrees 40 minutes 32 seconds West to a point;

THENCE South 08 degrees 44 minutes 10 seconds West a distance of 302.35 feet to a 1/2" rebar found;

THENCE South 08 degrees 26 minutes 39 seconds West a distance of 381.80 feet to a point;

THENCE South 03 degrees 28 minutes 49 seconds West a distance of 236.82 feet to a point;

THENCE South 03 degrees 01 minutes 11 seconds East a distance of 47.07 feet to a 1/2" rebar found;

THENCE leaving said right-of-way line of Old Mill Road, North 87 degrees 22 minutes 46 seconds West a distance of 202.61 feet to a 1/2" rebar found;

THENCE South 25 degrees 08 minutes 38 seconds West a distance of 877.99 feet to a 1/2" open top pipe found, said pipe being located on the northern right-of-way line of Interstate 20 (R/W varies);

THENCE traveling westerly along the northern right-of-way line of Interstate 20, North 68 degrees 24 minutes 57 seconds West a distance of 413.31 feet to a point;

THENCE North 68 degrees 20 minutes 15 seconds West a distance of 1073.81 feet to a T-post found;

THENCE North 64 degrees 56 minutes 11 seconds West a distance of 236.40 feet to a point;

THENCE North 72 degrees 56 minutes 37 seconds West a distance of 237.38 feet to a point;

THENCE North 79 degrees 03 minutes 07 seconds West a distance of 1041.22 feet to a point;

THENCE North 78 degrees 53 minutes 36 seconds West a distance of 942.93 feet to a point;

THENCE North 76 degrees 05 minutes 18 seconds West a distance of 300.67 feet to a point;

THENCE North 82 degrees 58 minutes 42 seconds West a distance of 200.34 feet to a concrete monument found;

THENCE North 78 degrees 52 minutes 54 seconds West a distance of 299.87 feet to a concrete monument found;

THENCE North 73 degrees 13 minutes 55 seconds West a distance of 100.39 feet to a point;

THENCE North 84 degrees 34 minutes 56 seconds West a distance of 100.70 feet to a point;

THENCE North 78 degrees 53 minutes 06 seconds West a distance of 275.11 feet to a concrete monument found;

THENCE North 35 degrees 37 minutes 55 seconds West a distance of 54.20 feet to a point;

THENCE North 06 degrees 21 minutes 05 seconds East a distance of 149.30 feet to a point;

THENCE North 08 degrees 43 minutes 08 seconds East a distance of 68.28 feet to a point;

THENCE with the arc of a curve turning to the right, having an arc length of 155.16 feet, a radius of 904.95 feet, a chord length of 154.97 feet, and a chord bearing North 15 degrees 47 minutes 35 seconds East to a point;

THENCE North 79 degrees 37 minutes 03 seconds West a distance of 101.40 feet to a point;

THENCE with the arc of a curve turning to the left, having an arc length of 229.64 feet, a radius of 1004.95 feet, a chord length of 229.14 feet, and a chord bearing South 13 degrees 11 minutes 01 seconds West to a point;

THENCE South 06 degrees 08 minutes 16 seconds West a distance of 141.70 feet to a point;

THENCE South 57 degrees 18 minutes 14 seconds West a distance of 55.99 feet to a point;

THENCE North 78 degrees 52 minutes 45 seconds West a distance of 578.74 feet to a point;

THENCE North 78 degrees 49 minutes 10 seconds West a distance of 1147.76 feet to a point;

THENCE North 67 degrees 29 minutes 56 seconds West a distance of 127.48 feet to a point;

THENCE North 78 degrees 48 minutes 32 seconds West a distance of 195.43 feet to a point;

THENCE North 85 degrees 52 minutes 51 seconds West a distance of 200.30 feet to a concrete monument found;

THENCE North 78 degrees 52 minutes 01 seconds West a distance of 2291.20 feet to a concrete monument found;

THENCE North 78 degrees 46 minutes 48 seconds West a distance of 410.20 feet to a point;

THENCE North 42 degrees 44 minutes 25 seconds West a distance of 91.18 feet to a point;

THENCE North 78 degrees 42 minutes 42 seconds West a distance of 125.57 feet to a point;

THENCE North 84 degrees 29 minutes 42 seconds West a distance of 452.80 feet to a concrete monument found;

THENCE North 78 degrees 57 minutes 42 seconds West a distance of 448.32 feet to a point;

THENCE North 84 degrees 34 minutes 20 seconds West a distance of 100.60 feet to a point;

THENCE North 78 degrees 52 minutes 20 seconds West a distance of 317.10 feet to a concrete monument found;

THENCE North 78 degrees 49 minutes 20 seconds West a distance of 532.70 feet to a concrete monument found;

THENCE North 76 degrees 36 minutes 20 seconds West a distance of 250.20 feet to a point;

THENCE North 80 degrees 40 minutes 20 seconds West a distance of 311.20 feet to a concrete monument found;

THENCE North 71 degrees 04 minutes 54 seconds West a distance of 285.87 feet to a concrete monument found;

THENCE North 63 degrees 23 minutes 58 seconds West a distance of 889.91 feet to a point;

THENCE North 06 degrees 11 minutes 49 seconds West a distance of 106.67 feet to a point, said point being located on the southeastern right-of-way line of US Highway 278 (R/W varies);

THENCE traveling northeasterly along the southeastern right-of-way line of US Highway 278, North 40 degrees 37 minutes 50 seconds East a distance of 145.93 feet to a point;

THENCE North 48 degrees 38 minutes 19 seconds West a distance of 35.00 feet to a point,

THENCE North 40 degrees 33 minutes 37 seconds East a distance of 1423.58 feet to a point;

THENCE North 40 degrees 35 minutes 16 seconds East a distance of 1787.70 feet to a 1/2" open top pipe found;

THENCE leaving said right-of-way line of US Highway 278, South 56 degrees 51 minutes 20 seconds East a distance of 167.22 feet to a 1/2" rebar found;

THENCE South 56 degrees 51 minutes 20 seconds East a distance of 117.52 feet to a point;
THENCE South 28 degrees 01 minutes 16 seconds West a distance of 87.05 feet to a point, said point being in the centerline of a creek;
THENCE traveling along the centerline of said creek, North 65 degrees 01 minutes 25 seconds East a distance of 34.59 feet to a point;
THENCE South 32 degrees 59 minutes 59 seconds East a distance of 20.89 feet to a point;
THENCE South 50 degrees 05 minutes 45 seconds East a distance of 28.09 feet to a point;
THENCE South 28 degrees 17 minutes 42 seconds East a distance of 11.70 feet to a point;
THENCE South 72 degrees 01 minutes 12 seconds East a distance of 28.76 feet to a point;
THENCE South 17 degrees 37 minutes 27 seconds East a distance of 31.87 feet to a point;
THENCE South 86 degrees 46 minutes 37 seconds East a distance of 32.79 feet to a point;
THENCE South 17 degrees 24 minutes 35 seconds East a distance of 11.34 feet to a point;
THENCE South 40 degrees 33 minutes 54 seconds East a distance of 36.92 feet to a point;
THENCE South 09 degrees 28 minutes 56 seconds West a distance of 6.53 feet to a point;
THENCE South 39 degrees 01 minutes 31 seconds East a distance of 24.61 feet to a point;
THENCE South 84 degrees 51 minutes 45 seconds East a distance of 23.53 feet to a point;
THENCE South 18 degrees 33 minutes 15 seconds East a distance of 18.94 feet to a point;
THENCE South 66 degrees 30 minutes 09 seconds East a distance of 61.55 feet to a point;
THENCE South 37 degrees 30 minutes 26 seconds East a distance of 22.97 feet to a point;
THENCE South 04 degrees 40 minutes 47 seconds West a distance of 10.52 feet to a point;
THENCE South 45 degrees 12 minutes 56 seconds East a distance of 25.92 feet to a point;
THENCE South 01 degrees 42 minutes 31 seconds East a distance of 20.00 feet to a point;
THENCE South 47 degrees 37 minutes 45 seconds West a distance of 12.04 feet to a point;
THENCE South 17 degrees 42 minutes 18 seconds East a distance of 41.44 feet to a point;
THENCE North 84 degrees 42 minutes 29 seconds East a distance of 18.68 feet to a point;
THENCE South 46 degrees 16 minutes 05 seconds East a distance of 17.26 feet to a point;
THENCE South 64 degrees 42 minutes 48 seconds East a distance of 70.17 feet to a point;
THENCE South 36 degrees 08 minutes 46 seconds East a distance of 54.12 feet to a point;
THENCE South 17 degrees 47 minutes 05 seconds East a distance of 71.23 feet to a point;
THENCE South 55 degrees 04 minutes 53 seconds East a distance of 24.53 feet to a point;

THENCE South 76 degrees 52 minutes 02 seconds East a distance of 18.10 feet to a point;
THENCE South 87 degrees 22 minutes 56 seconds East a distance of 16.80 feet to a point;
THENCE South 15 degrees 08 minutes 27 seconds East a distance of 16.01 feet to a point;
THENCE South 68 degrees 37 minutes 42 seconds East a distance of 30.28 feet to a point;
THENCE North 82 degrees 32 minutes 47 seconds East a distance of 32.93 feet to a point;
THENCE North 64 degrees 25 minutes 16 seconds East a distance of 13.19 feet to a point;
THENCE South 71 degrees 47 minutes 58 seconds East a distance of 24.10 feet to a point;
THENCE South 48 degrees 15 minutes 16 seconds East a distance of 82.88 feet to a point;
THENCE South 14 degrees 15 minutes 23 seconds East a distance of 19.14 feet to a point;
THENCE South 89 degrees 37 minutes 57 seconds East a distance of 27.22 feet to a point;
THENCE South 60 degrees 25 minutes 01 seconds East a distance of 73.11 feet to a point;
THENCE North 80 degrees 21 minutes 21 seconds East a distance of 19.63 feet to a point;
THENCE South 36 degrees 54 minutes 10 seconds East a distance of 16.44 feet to a point;
THENCE North 74 degrees 57 minutes 01 seconds East a distance of 19.03 feet to a point;
THENCE South 47 degrees 03 minutes 33 seconds East a distance of 32.39 feet to a point;
THENCE North 58 degrees 34 minutes 25 seconds East a distance of 31.27 feet to a point;
THENCE South 61 degrees 57 minutes 35 seconds East a distance of 91.81 feet to a point;
THENCE North 49 degrees 41 minutes 36 seconds East a distance of 22.33 feet to a point;
THENCE South 81 degrees 00 minutes 43 seconds East a distance of 9.06 feet to a point;
THENCE South 69 degrees 33 minutes 50 seconds East a distance of 7.89 feet to a point;
THENCE North 84 degrees 05 minutes 47 seconds East a distance of 45.37 feet to a point;
THENCE South 57 degrees 07 minutes 29 seconds East a distance of 26.13 feet to a point;
THENCE North 27 degrees 05 minutes 10 seconds East a distance of 13.92 feet to a point;
THENCE South 81 degrees 40 minutes 48 seconds East a distance of 49.86 feet to a point;
THENCE South 14 degrees 54 minutes 08 seconds East a distance of 17.23 feet to a point;
THENCE South 60 degrees 00 minutes 21 seconds East a distance of 40.94 feet to a point;
THENCE South 25 degrees 18 minutes 29 seconds East a distance of 28.39 feet to a point;
THENCE North 66 degrees 52 minutes 49 seconds East a distance of 13.91 feet to a point;
THENCE South 33 degrees 28 minutes 20 seconds East a distance of 8.94 feet to a point;

THENCE South 20 degrees 38 minutes 33 seconds West a distance of 26.66 feet to a point;
THENCE South 65 degrees 33 minutes 40 seconds East a distance of 12.88 feet to a point;
THENCE South 42 degrees 39 minutes 16 seconds East a distance of 12.64 feet to a point;
THENCE North 81 degrees 53 minutes 19 seconds East a distance of 14.92 feet to a point;
THENCE North 12 degrees 40 minutes 16 seconds East a distance of 20.54 feet to a point;
THENCE North 59 degrees 27 minutes 50 seconds East a distance of 22.88 feet to a point;
THENCE North 42 degrees 25 minutes 16 seconds East a distance of 13.48 feet to a point;
THENCE North 52 degrees 18 minutes 55 seconds East a distance of 9.25 feet to a point;
THENCE South 86 degrees 38 minutes 40 seconds East a distance of 28.41 feet to a point;
THENCE South 66 degrees 58 minutes 01 seconds East a distance of 42.66 feet to a point;
THENCE South 70 degrees 38 minutes 25 seconds East a distance of 91.46 feet to a point;
THENCE South 39 degrees 17 minutes 23 seconds East a distance of 74.29 feet to a point;
THENCE South 89 degrees 30 minutes 19 seconds East a distance of 85.16 feet to a point;
THENCE South 55 degrees 14 minutes 21 seconds East a distance of 46.75 feet to a point;
THENCE South 05 degrees 38 minutes 06 seconds West a distance of 9.81 feet to a point;
THENCE South 85 degrees 00 minutes 08 seconds West a distance of 18.34 feet to a point;
THENCE South 10 degrees 22 minutes 27 seconds West a distance of 20.51 feet to a point;
THENCE South 62 degrees 22 minutes 45 seconds East a distance of 21.26 feet to a point;
THENCE North 56 degrees 43 minutes 47 seconds East a distance of 27.88 feet to a point;
THENCE South 37 degrees 17 minutes 00 seconds East a distance of 24.90 feet to a point;
THENCE South 07 degrees 12 minutes 59 seconds West a distance of 16.21 feet to a point;
THENCE South 86 degrees 35 minutes 12 seconds East a distance of 89.06 feet to a point;
THENCE North 66 degrees 25 minutes 50 seconds East a distance of 13.29 feet to a point;
THENCE South 82 degrees 53 minutes 18 seconds East a distance of 27.03 feet to a point;
THENCE North 84 degrees 23 minutes 28 seconds East a distance of 49.40 feet to a point;
THENCE South 66 degrees 09 minutes 40 seconds East a distance of 15.74 feet to a point;
THENCE North 71 degrees 54 minutes 52 seconds East a distance of 43.78 feet to a point;
THENCE South 46 degrees 39 minutes 09 seconds East a distance of 11.40 feet to a point;
THENCE North 85 degrees 52 minutes 28 seconds East a distance of 28.70 feet to a point;

THENCE South 76 degrees 29 minutes 08 seconds East a distance of 12.79 feet to a point, said point being located at the centerline of Dennis Creek;

THENCE traveling northeasterly along the centerline of Dennis Creek, North 29 degrees 00 minutes 50 seconds West a distance of 4.90 feet to a point;

THENCE North 21 degrees 59 minutes 57 seconds West a distance of 28.11 feet to a point;

THENCE North 15 degrees 58 minutes 58 seconds West a distance of 32.10 feet to a point;

THENCE North 72 degrees 07 minutes 09 seconds West a distance of 10.56 feet to a point;

THENCE North 45 degrees 44 minutes 36 seconds West a distance of 19.12 feet to a point;

THENCE North 06 degrees 29 minutes 49 seconds East a distance of 25.78 feet to a point;

THENCE North 19 degrees 01 minutes 16 seconds East a distance of 44.39 feet to a point;

THENCE North 38 degrees 56 minutes 02 seconds West a distance of 30.14 feet to a point;

THENCE North 04 degrees 38 minutes 46 seconds West a distance of 66.96 feet to a point;

THENCE North 60 degrees 08 minutes 24 seconds East a distance of 20.34 feet to a point;

THENCE North 77 degrees 54 minutes 46 seconds East a distance of 16.98 feet to a point;

THENCE North 40 degrees 04 minutes 28 seconds East a distance of 14.05 feet to a point;

THENCE North 06 degrees 39 minutes 02 seconds East a distance of 17.17 feet to a point;

THENCE North 28 degrees 08 minutes 16 seconds West a distance of 40.41 feet to a point;

THENCE North 54 degrees 29 minutes 56 seconds West a distance of 16.31 feet to a point;

THENCE North 12 degrees 04 minutes 53 seconds West a distance of 17.63 feet to a point;

THENCE North 42 degrees 04 minutes 43 seconds East a distance of 18.41 feet to a point;

THENCE North 68 degrees 23 minutes 52 seconds East a distance of 41.33 feet to a point;

THENCE North 45 degrees 26 minutes 29 seconds East a distance of 26.80 feet to a point;

THENCE North 06 degrees 24 minutes 31 seconds West a distance of 11.88 feet to a point;

THENCE North 49 degrees 05 minutes 28 seconds West a distance of 38.52 feet to a point;

THENCE North 44 degrees 08 minutes 56 seconds West a distance of 11.03 feet to a point;

THENCE North 21 degrees 50 minutes 14 seconds East a distance of 60.27 feet to a point;

THENCE North 41 degrees 34 minutes 48 seconds East a distance of 47.12 feet to a point;

THENCE North 26 degrees 28 minutes 41 seconds East a distance of 46.74 feet to a point;

THENCE North 06 degrees 53 minutes 04 seconds East a distance of 37.88 feet to a point;

THENCE North 10 degrees 54 minutes 55 seconds East a distance of 18.30 feet to a point;

THENCE North 39 degrees 21 minutes 36 seconds East a distance of 23.16 feet to a point;
THENCE North 29 degrees 28 minutes 11 seconds West a distance of 40.32 feet to a point;
THENCE North 03 degrees 49 minutes 25 seconds West a distance of 22.40 feet to a point;
THENCE North 21 degrees 14 minutes 22 seconds East a distance of 45.35 feet to a point;
THENCE North 27 degrees 31 minutes 10 seconds East a distance of 50.16 feet to a point;
THENCE North 52 degrees 38 minutes 38 seconds East a distance of 44.38 feet to a point;
THENCE North 42 degrees 32 minutes 07 seconds East a distance of 29.49 feet to a point;
THENCE North 28 degrees 53 minutes 58 seconds East a distance of 39.56 feet to a point;
THENCE North 37 degrees 36 minutes 51 seconds East a distance of 40.16 feet to a point;
THENCE North 72 degrees 16 minutes 24 seconds East a distance of 25.91 feet to a point;
THENCE South 66 degrees 37 minutes 16 seconds East a distance of 17.55 feet to a point;
THENCE North 72 degrees 21 minutes 27 seconds East a distance of 14.97 feet to a point;
THENCE North 55 degrees 17 minutes 42 seconds East a distance of 28.88 feet to a point;
THENCE North 72 degrees 11 minutes 29 seconds East a distance of 62.06 feet to a point;
THENCE North 57 degrees 44 minutes 49 seconds East a distance of 47.27 feet to a point;
THENCE North 73 degrees 02 minutes 35 seconds East a distance of 48.28 feet to a point;
THENCE North 77 degrees 52 minutes 42 seconds East a distance of 58.08 feet to a point;
THENCE North 38 degrees 07 minutes 33 seconds East a distance of 33.45 feet to a point;
THENCE North 68 degrees 52 minutes 28 seconds East a distance of 33.33 feet to a point;
THENCE North 75 degrees 18 minutes 49 seconds East a distance of 19.56 feet to a point;
THENCE North 70 degrees 07 minutes 55 seconds East a distance of 23.32 feet to a point;
THENCE South 78 degrees 44 minutes 39 seconds East a distance of 67.52 feet to a point;
THENCE North 67 degrees 06 minutes 12 seconds East a distance of 39.17 feet to a point;
THENCE South 84 degrees 38 minutes 51 seconds East a distance of 16.19 feet to a point;
THENCE North 53 degrees 10 minutes 19 seconds East a distance of 47.11 feet to a point;
THENCE North 74 degrees 06 minutes 33 seconds East a distance of 33.15 feet to a point;
THENCE North 72 degrees 10 minutes 19 seconds East a distance of 35.09 feet to a point;
THENCE South 85 degrees 33 minutes 44 seconds East a distance of 30.03 feet to a point;
THENCE North 49 degrees 20 minutes 17 seconds East a distance of 17.54 feet to a point;

THENCE North 31 degrees 28 minutes 05 seconds East a distance of 29.51 feet to a point;
THENCE North 53 degrees 46 minutes 49 seconds East a distance of 23.13 feet to a point;
THENCE North 19 degrees 13 minutes 58 seconds East a distance of 16.26 feet to a point;
THENCE North 16 degrees 57 minutes 30 seconds East a distance of 44.95 feet to a point;
THENCE North 52 degrees 14 minutes 17 seconds East a distance of 45.42 feet to a point;
THENCE North 36 degrees 42 minutes 44 seconds East a distance of 87.41 feet to a point;
THENCE North 09 degrees 43 minutes 00 seconds West a distance of 22.52 feet to a point;
THENCE North 28 degrees 19 minutes 36 seconds East a distance of 46.28 feet to a point;
THENCE North 09 degrees 55 minutes 36 seconds East a distance of 53.12 feet to a point;
THENCE North 37 degrees 09 minutes 25 seconds East a distance of 30.40 feet to a point;
THENCE North 18 degrees 18 minutes 57 seconds West a distance of 38.37 feet to a point;
THENCE North 37 degrees 32 minutes 46 seconds East a distance of 26.53 feet to a point;
THENCE North 19 degrees 06 minutes 31 seconds East a distance of 20.52 feet to a point;
THENCE North 44 degrees 46 minutes 14 seconds East a distance of 20.86 feet to a point;
THENCE North 07 degrees 27 minutes 31 seconds West a distance of 65.52 feet to a point;
THENCE North 48 degrees 50 minutes 44 seconds East a distance of 44.51 feet to a point;
THENCE North 18 degrees 04 minutes 36 seconds East a distance of 39.45 feet to a point;
THENCE North 36 degrees 49 minutes 41 seconds East a distance of 42.55 feet to a point;
THENCE North 28 degrees 36 minutes 35 seconds East a distance of 60.11 feet to a point;
THENCE North 23 degrees 09 minutes 33 seconds East a distance of 20.93 feet to a point;
THENCE North 57 degrees 53 minutes 04 seconds East a distance of 75.79 feet to a point;
THENCE North 37 degrees 40 minutes 00 seconds East a distance of 60.89 feet to a point;
THENCE North 05 degrees 19 minutes 41 seconds East a distance of 27.33 feet to a point;
THENCE North 06 degrees 13 minutes 40 seconds East a distance of 20.95 feet to a point;
THENCE North 25 degrees 33 minutes 37 seconds East a distance of 34.21 feet to a point;
THENCE North 09 degrees 03 minutes 07 seconds West a distance of 16.13 feet to a point;
THENCE North 25 degrees 22 minutes 26 seconds West a distance of 15.59 feet to a point;
THENCE North 07 degrees 25 minutes 56 seconds East a distance of 28.09 feet to a point;
THENCE North 14 degrees 51 minutes 39 seconds West a distance of 22.00 feet to a point;

THENCE North 22 degrees 09 minutes 18 seconds East a distance of 34.74 feet to a point;
THENCE North 02 degrees 27 minutes 53 seconds East a distance of 21.60 feet to a point;
THENCE North 36 degrees 56 minutes 20 seconds West a distance of 21.20 feet to a point;
THENCE North 04 degrees 01 minutes 12 seconds West a distance of 45.53 feet to a point;
THENCE North 12 degrees 36 minutes 08 seconds West a distance of 26.77 feet to a point;
THENCE North 13 degrees 17 minutes 31 seconds East a distance of 41.31 feet to a point;
THENCE North 14 degrees 31 minutes 55 seconds West a distance of 53.79 feet to a point;
THENCE North 33 degrees 40 minutes 44 seconds East a distance of 41.73 feet to a point;
THENCE North 09 degrees 29 minutes 31 seconds West a distance of 26.51 feet to a point;
THENCE North 17 degrees 49 minutes 23 seconds West a distance of 22.12 feet to a point, said point being located on the southern right-of-way line of Darel Drive (70' R/W);
THENCE traveling northeasterly along the right-of-way line of Darel Drive, North 66 degrees 07 minutes 39 seconds East a distance of 150.00 feet to a point;
THENCE North 65 degrees 37 minutes 53 seconds East a distance of 150.00 feet to a point;
THENCE North 65 degrees 13 minutes 22 seconds East a distance of 150.01 feet to a point;
THENCE North 64 degrees 54 minutes 00 seconds East a distance of 150.01 feet to a point;
THENCE North 64 degrees 38 minutes 56 seconds East a distance of 150.01 feet to a point;
THENCE North 64 degrees 53 minutes 45 seconds East a distance of 150.00 feet to a point;
THENCE North 64 degrees 58 minutes 35 seconds East a distance of 150.00 feet to a point;
THENCE North 64 degrees 46 minutes 49 seconds East a distance of 322.56 feet to a point;
THENCE with the arc of a curve turning to the right, having an arc length of 127.93 feet, a radius of 556.00 feet, a chord length of 127.65 feet, and a chord bearing North 71 degrees 22 minutes 19 seconds East to a point;
THENCE with a reverse curve turning to the left, having an arc length of 248.08 feet, a radius of 968.77 feet, a chord length of 247.40 feet, and a chord bearing North 70 degrees 37 minutes 39 seconds East to a point;
THENCE North 63 degrees 17 minutes 29 seconds East a distance of 636.35 feet to a point;
THENCE with the arc of a curve turning to the left, having an arc length of 79.90 feet, a radius of 2000.00 feet, a chord length of 79.89 feet, and a chord bearing North 62 degrees 08 minutes 49 seconds East to a point;
THENCE North 61 degrees 00 minutes 09 seconds East a distance of 358.02 feet to a point;

THENCE with the arc of a curve turning to the left, having an arc length of 389.49 feet, a radius of 5794.87 feet, a chord length of 389.42 feet, and a chord bearing North 59 degrees 59 minutes 44 seconds East to a point;

THENCE North 58 degrees 04 minutes 12 seconds East a distance of 283.44 feet to a point;

THENCE North 58 degrees 14 minutes 36 seconds East a distance of 198.62 feet to a point;

THENCE with the arc of a curve turning to the right, having an arc length of 143.70 feet, a radius of 518.45 feet, a chord length of 143.24 feet, and a chord bearing North 66 degrees 11 minutes 02 seconds East to a point;

THENCE with a compound curve turning to the right, having an arc length of 65.72 feet, a radius of 250.00 feet, a chord length of 65.53 feet, and a chord bearing North 81 degrees 39 minutes 21 seconds East to a point;

THENCE with a compound curve turning to the right, having an arc length of 71.13 feet, a radius of 360.44 feet, a chord length of 71.02 feet, and a chord bearing South 85 degrees 09 minutes 33 seconds East to a point;

THENCE South 79 degrees 30 minutes 20 seconds East a distance of 166.21 feet to a point;

THENCE with the arc of a curve turning to the right, having an arc length of 138.10 feet, a radius of 3000.00 feet, a chord length of 138.09 feet, and a chord bearing South 78 degrees 11 minutes 13 seconds East to a point;

THENCE South 76 degrees 52 minutes 05 seconds East a distance of 280.80 feet to a point;

THENCE with the arc of a curve turning to the left, having an arc length of 139.74 feet, a radius of 362.00 feet, a chord length of 138.87 feet, and a chord bearing South 87 degrees 55 minutes 36 seconds East to a point;

THENCE North 81 degrees 00 minutes 53 seconds East a distance of 100.83 feet to a point, said point being located on the eastern right-of-way line of Davis Academy Road (80' R/W);

THENCE traveling northwesterly along the right-of-way line of Davis Academy Road, North 45 degrees 46 minutes 45 seconds West a distance of 12.21 feet to a point;

THENCE with the arc of a curve turning to the right, having an arc length of 403.63 feet, a radius of 914.93 feet, a chord length of 400.37 feet, and a chord bearing North 33 degrees 08 minutes 26 seconds West to a point;

THENCE North 20 degrees 30 minutes 08 seconds West a distance of 453.47 feet to a point;

THENCE with the arc of a curve turning to the right, having an arc length of 27.98 feet, a radius of 875.09 feet, a chord length of 27.97 feet, and a chord bearing North 19 degrees 35 minutes 11 seconds West to a 1/2" rebar set;

THENCE North 45 degrees 32 minutes 57 seconds East a distance of 68.97 feet to a 1/2" rebar set, said rebar being THE TRUE POINT OF BEGINNING.

The above described tract contains 1,927.204 acres.

